

QUADRO DE ELEMENTOS DE FUNDAÇÃO				
Referências	Dimensões (cm)	Altura (cm)	Armadura inf. X	Armadura inf. Y
P3 e P4	120x120	35 / 25	8Ø8c/15	8Ø8c/15
(P1-P2) e (P5-P6)	140x80	30 / 20	5Ø8c/15	9Ø8c/15

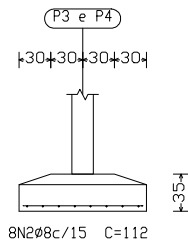
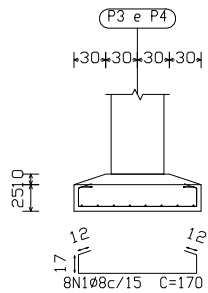
Resumo Aço Fundação	Comp. total (m)	Peso+10% (kg)	Total
CA-50-A	Ø8	84.7	37
	Ø10	24.1	17
CA-60-B	Ø4.2	18.1	2
Total			56

Elemento	Pos.	Diam.	Q.	Dob. (cm)	Reta (cm)	Dob. (cm)	Comp. (cm)	Tota. (cm)	CA-50 (kg)	CA-60-B (kg)	
P3=P4	1	Ø8	8		170		170	1360	5.3		
	2	Ø8	8		112		112	896	3.5		
	3	Ø10	6	30	59		89	534	3.4		
	4	Ø4.2	3		127		127	381		0.4	
Total +10% (x2):									13.4	0.4	
									26.8	0.8	
(P1-P2)=(P5-P6)	5	Ø8	5		180		180	900	3.5		
	6	Ø8	9		120		120	1080	4.2		
	7	Ø10	4	30	54		84	336	2.1		
	8	Ø4.2	3		87		87	261		0.3	
	9	Ø10	4	30	54		87	336	2.1		
	10	Ø4.2	3		87		87	261		0.3	
Total +10% (x2):									13.1	0.7	
									26.2	1.4	
									Ø4.2:	0.0	2.2
									Ø8:	36.4	0.0
									Ø10:	16.6	0.0
									Total:	53.0	2.2

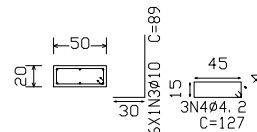
Fundação
Detalhamento fundação
Concreto: C30, em geral
Escala: 1:50

Fundação
Fundação
Concreto: C30, em geral
Escala: 1:50

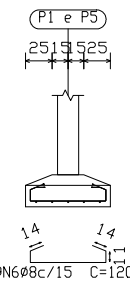
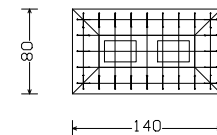
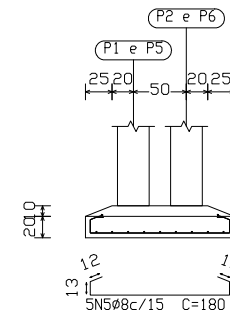
P3 e P4



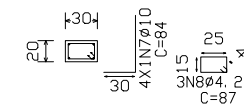
P3 e P4



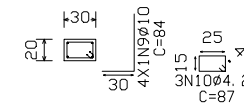
(P1-P2) e (P5-P6)



P1 e P5



P2 e P6



PREFEITURA MUNICIPAL
DE ENTRE FOLHAS
PRAÇA DA MATRIZ, 1466, CENTRO, 35324-000
CNPJ: 06.208.000/0001-80

PROJETO:
EXECUÇÃO DAS NOVAS INSTALAÇÕES DO
CEMITÉRIO MUNICIPAL.

ENDEREÇO:
RUA PROJETADE - CENTRO
S/N

RESPONSÁVEL TÉCNICO:
CAMILA MARTINS FRANCO SALES
ENGENHEIRA CIVIL OBR 203.724/D

CONTEÚDO:
PROJETO DE FUNDAÇÃO