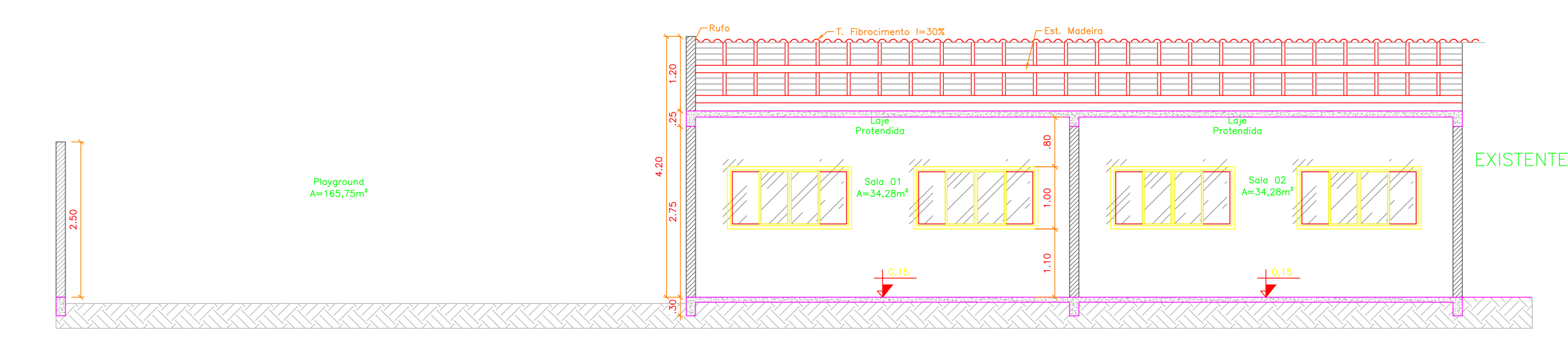
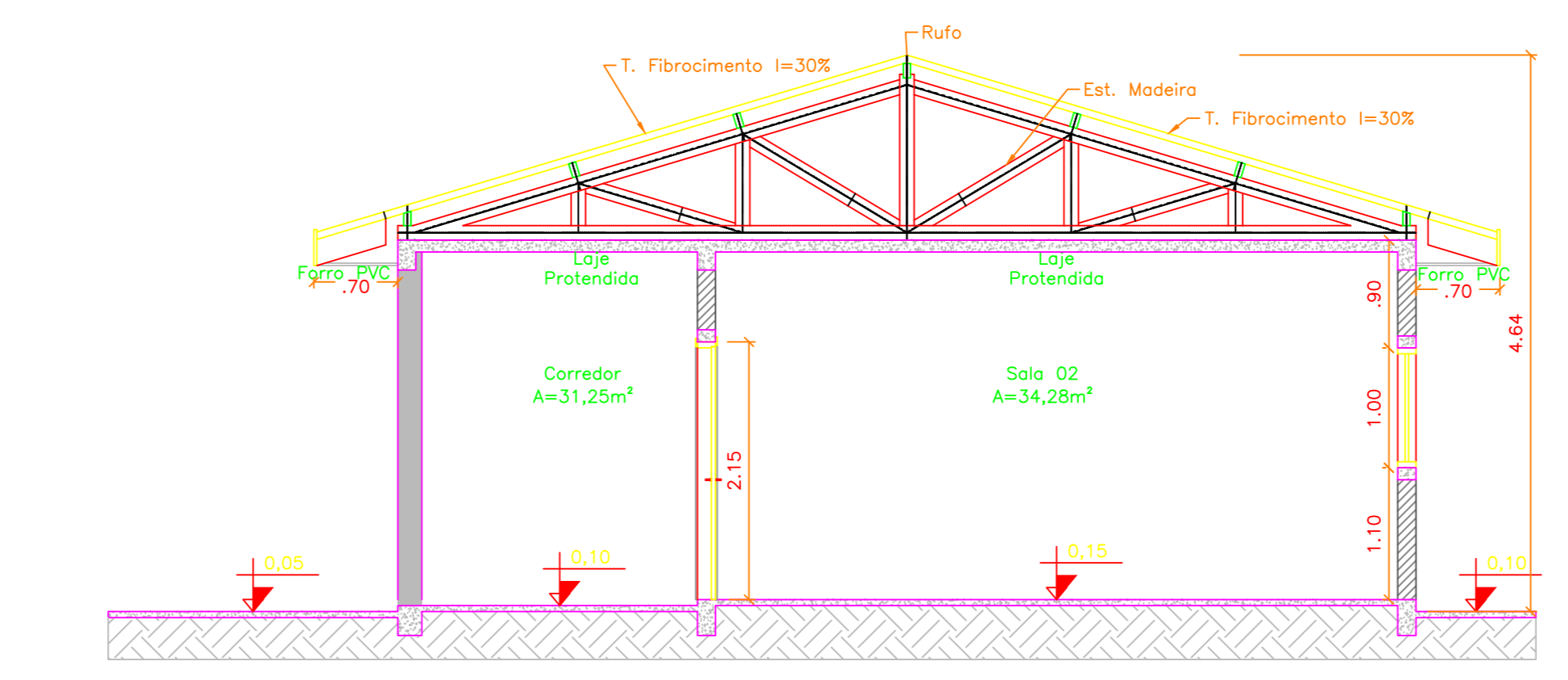


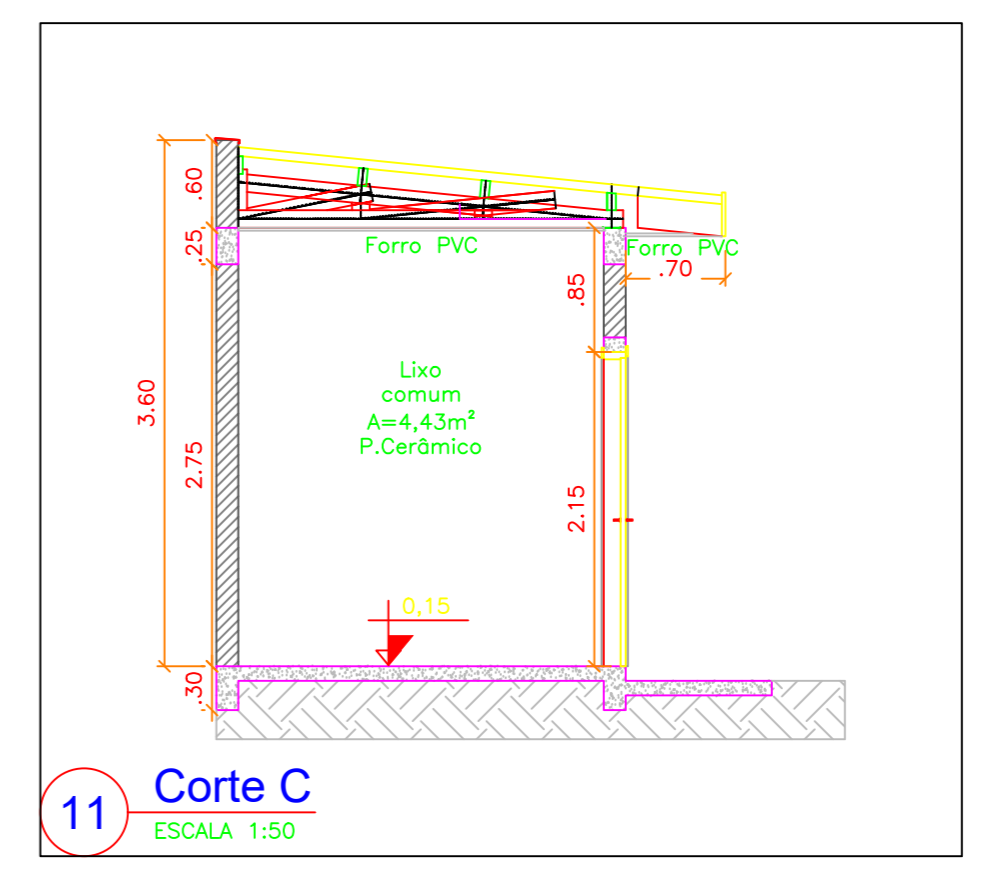
8 Planta Baixa  
ESCALA 1:50



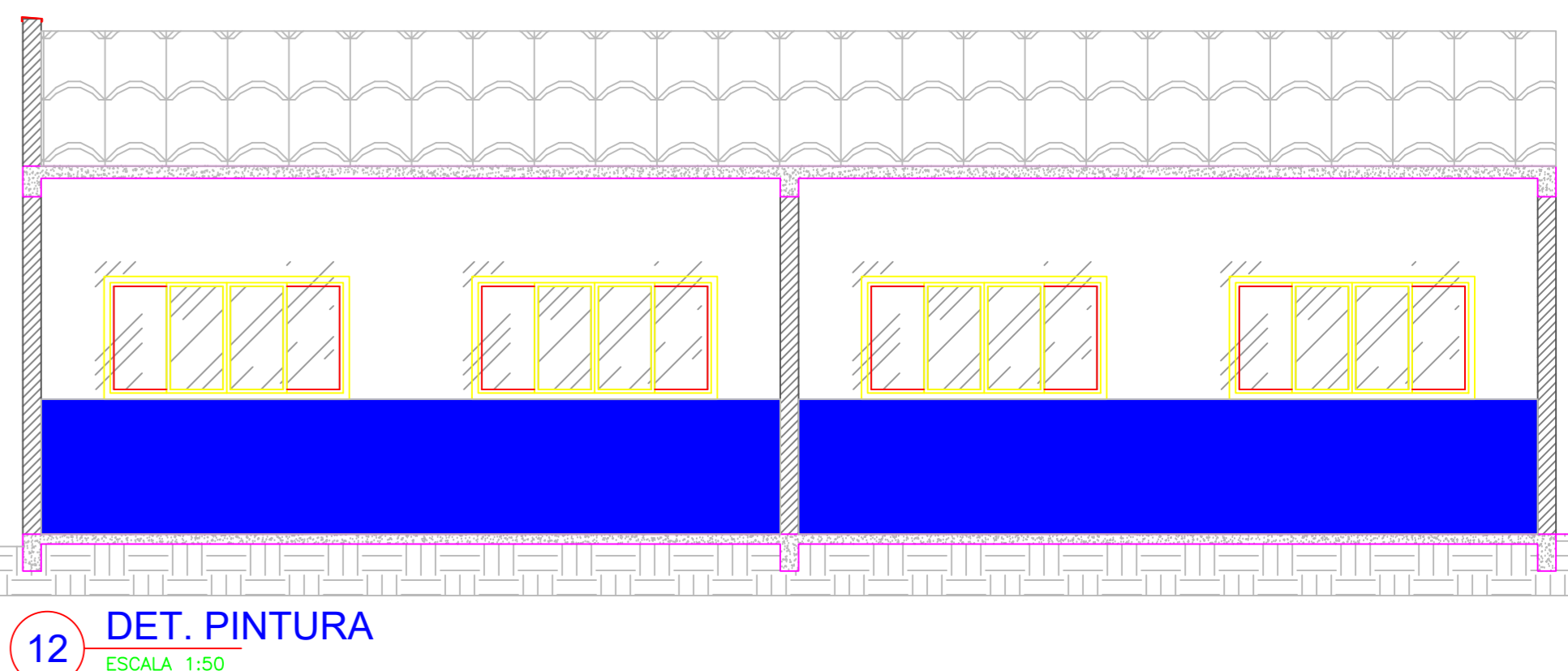
9 Corte A  
ESCALA 1:50



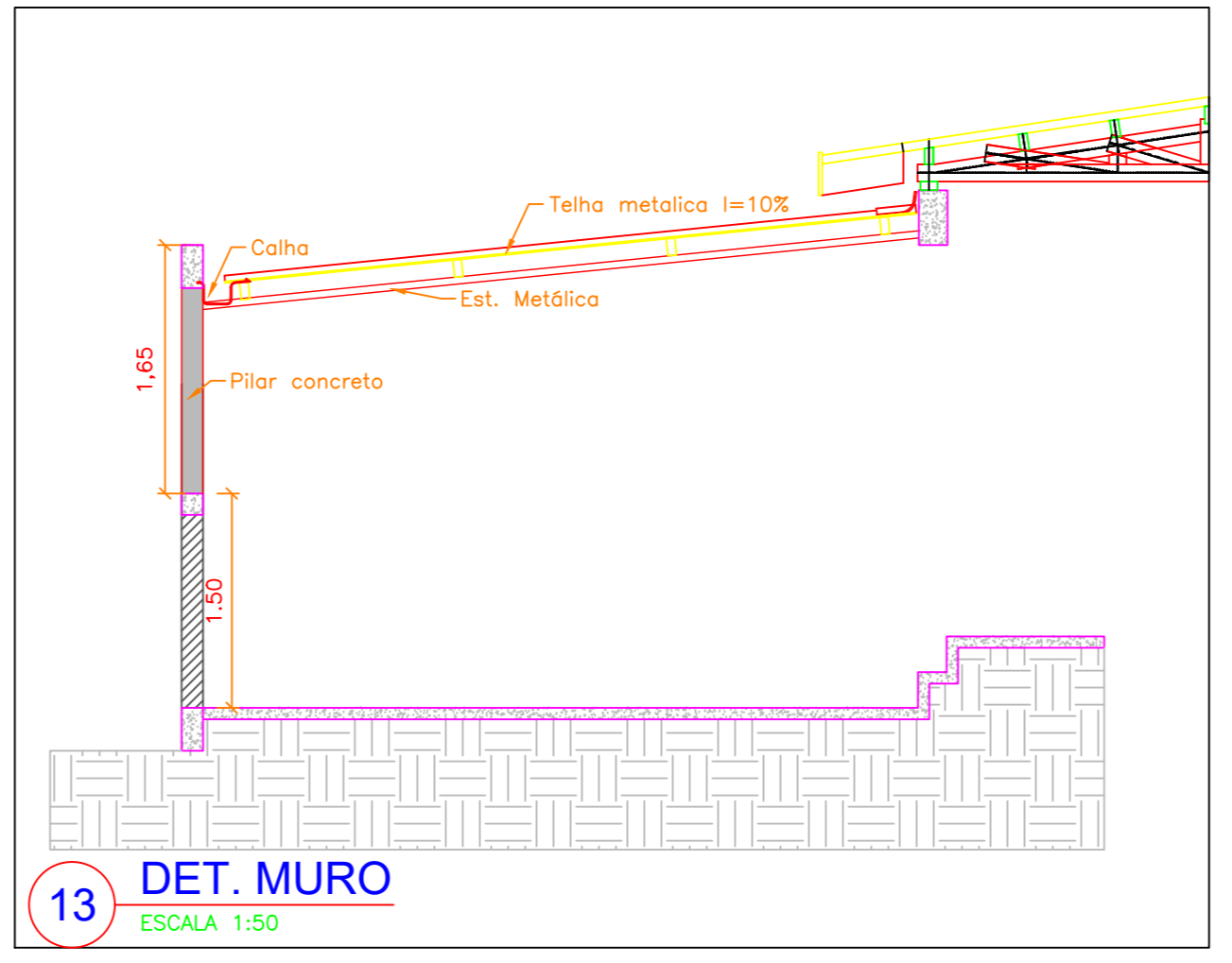
10 Corte B  
ESCALA 1:50



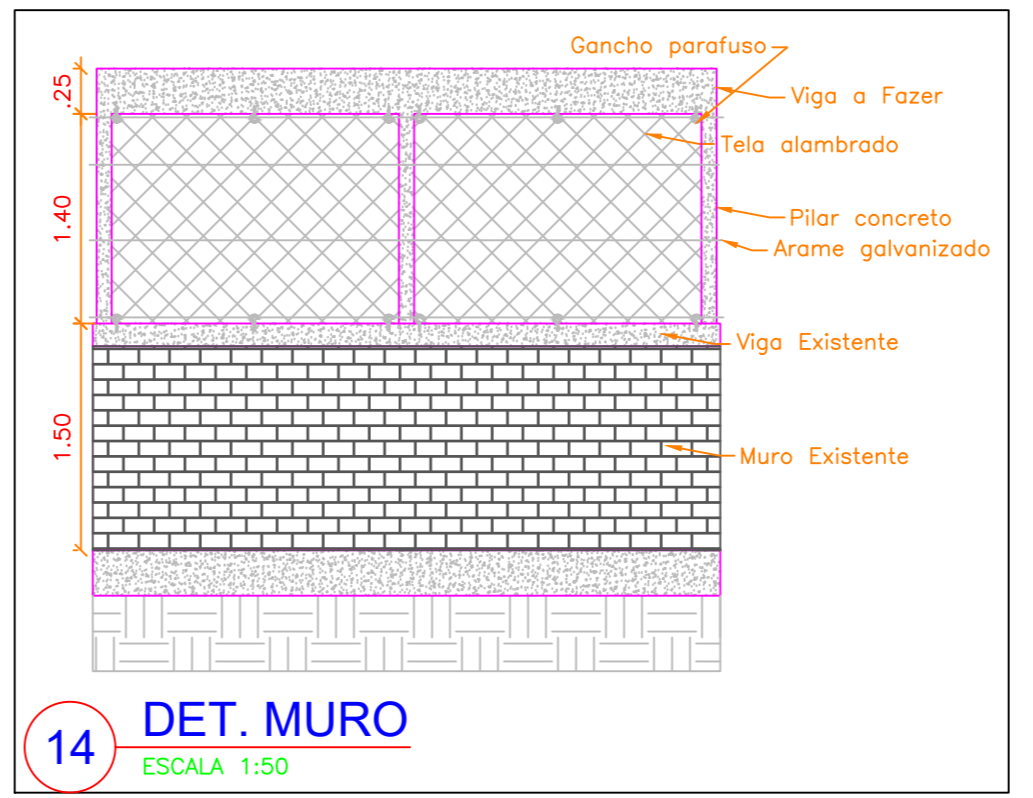
11 Corte C  
ESCALA 1:50



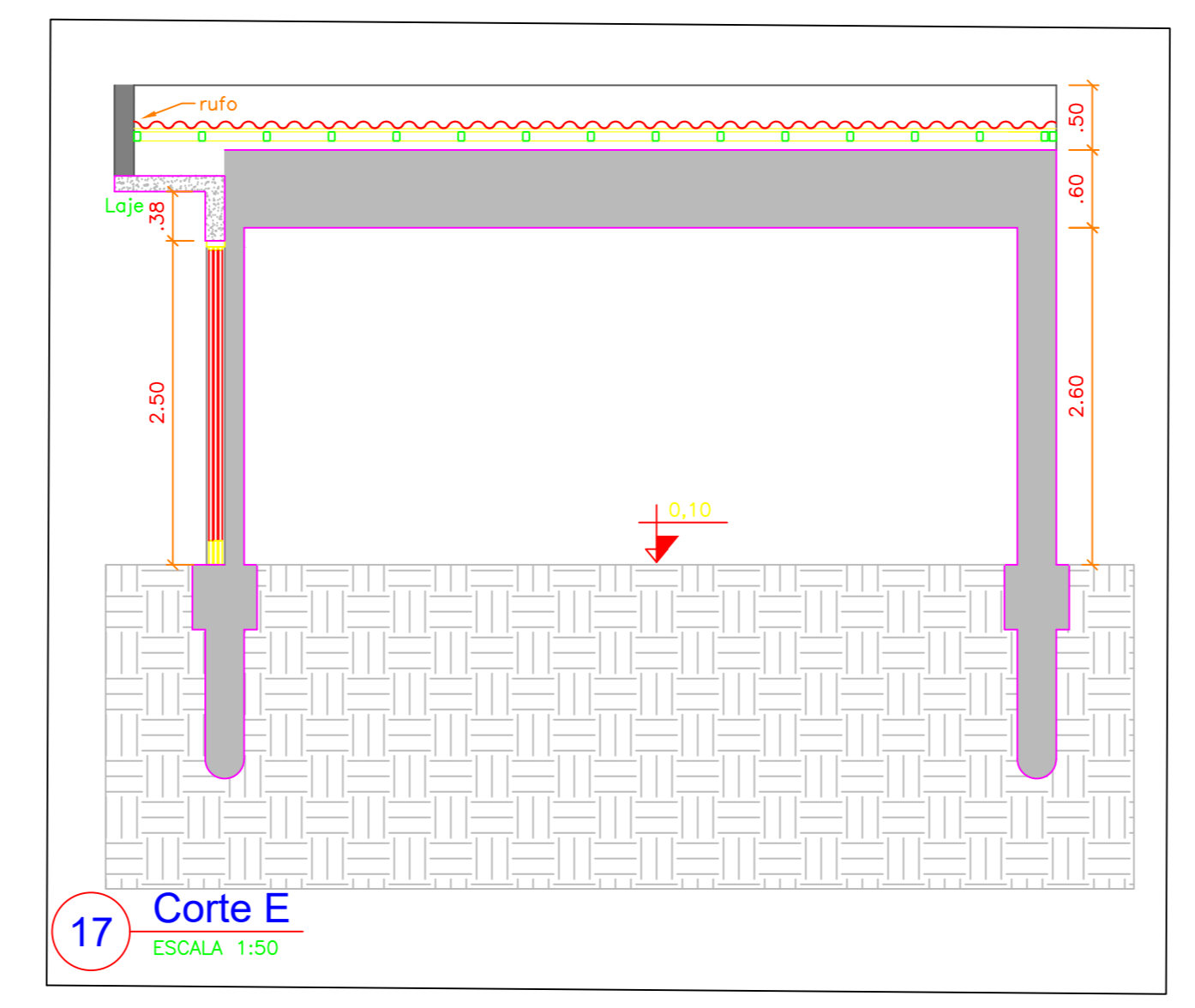
12 DET. PINTURA  
ESCALA 1:50



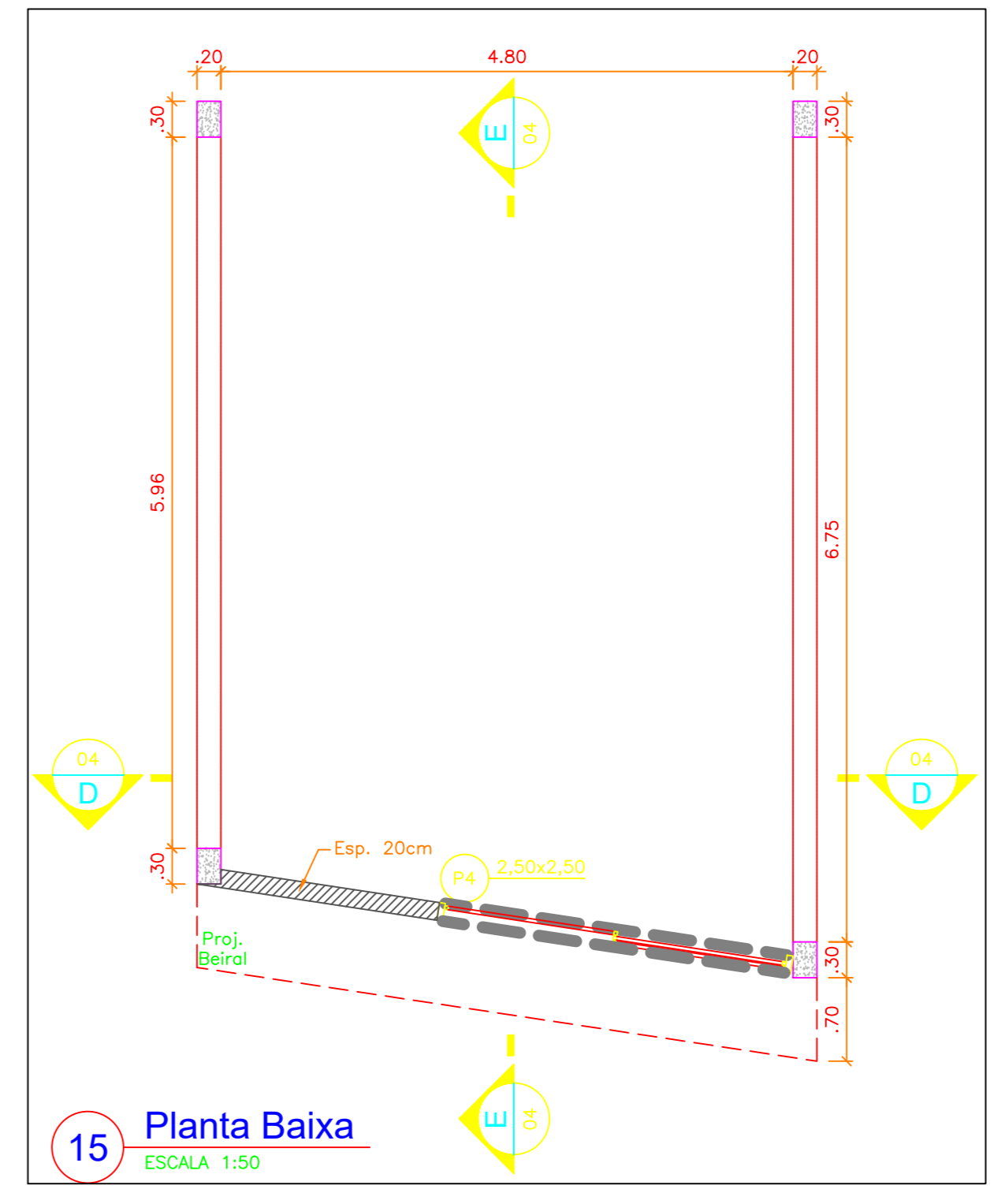
13 DET. MURO  
ESCALA 1:50



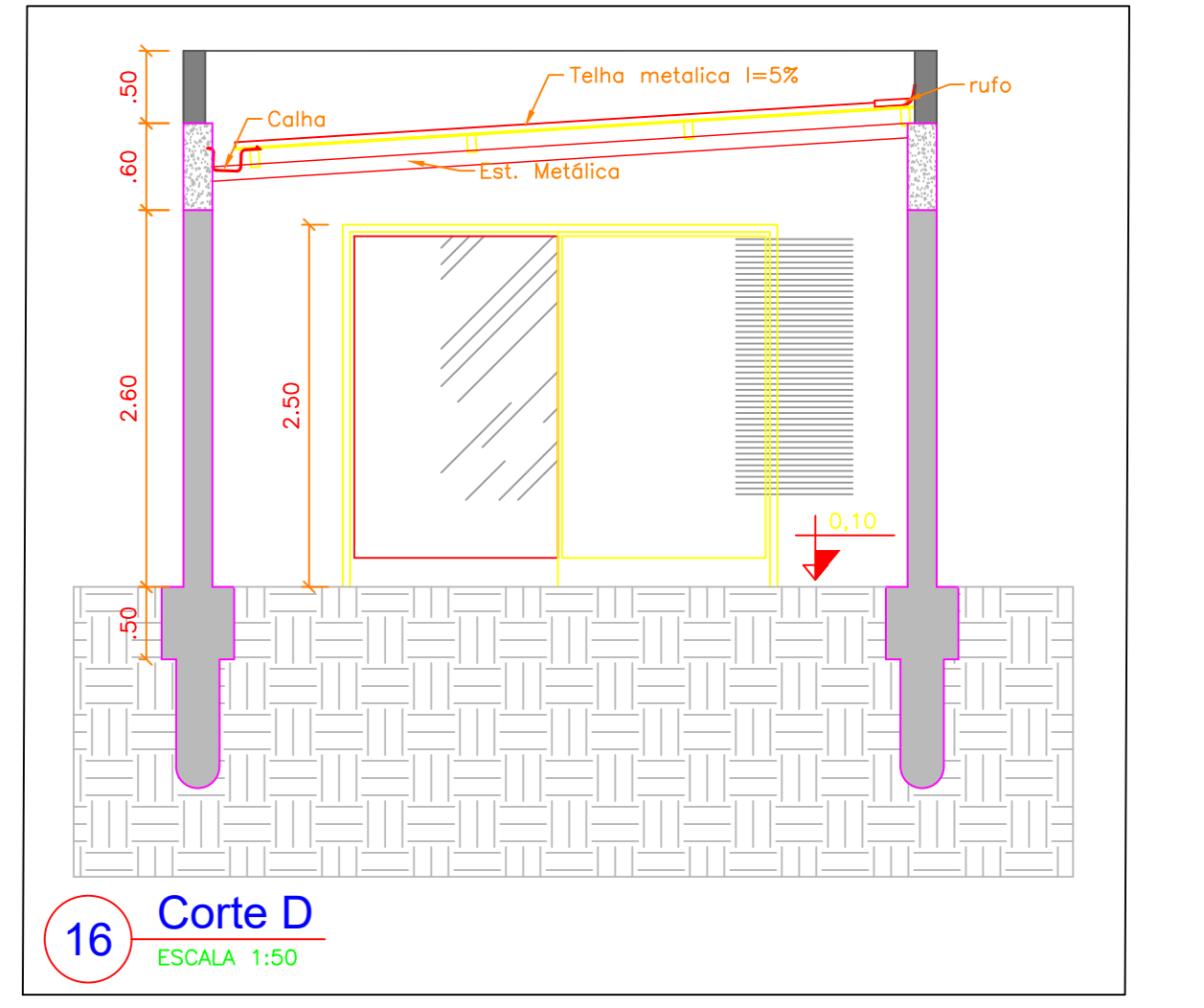
14 DET. MURO  
ESCALA 1:50



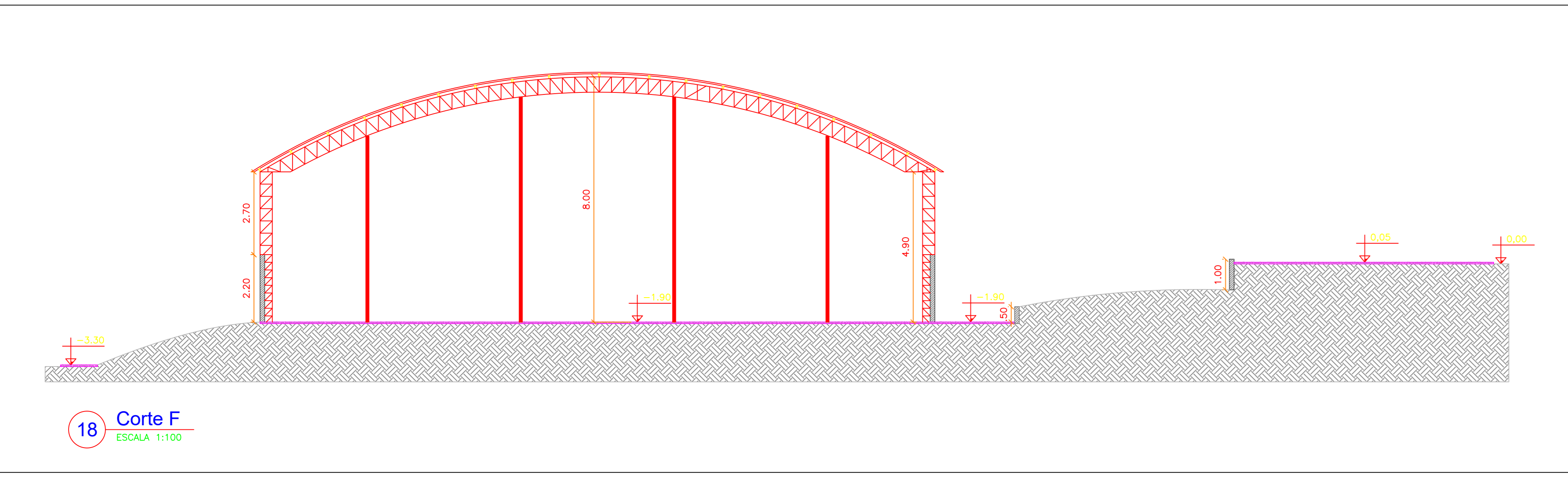
17 Corte E  
ESCALA 1:50



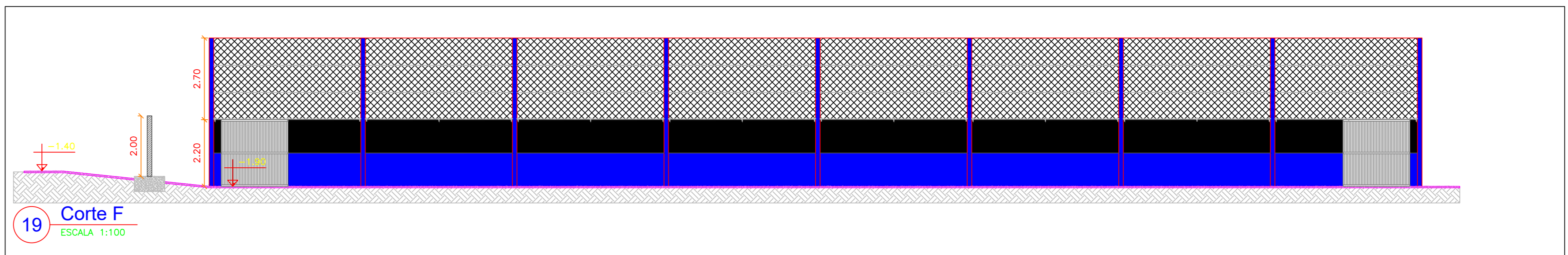
15 Planta Baixa  
ESCALA 1:50



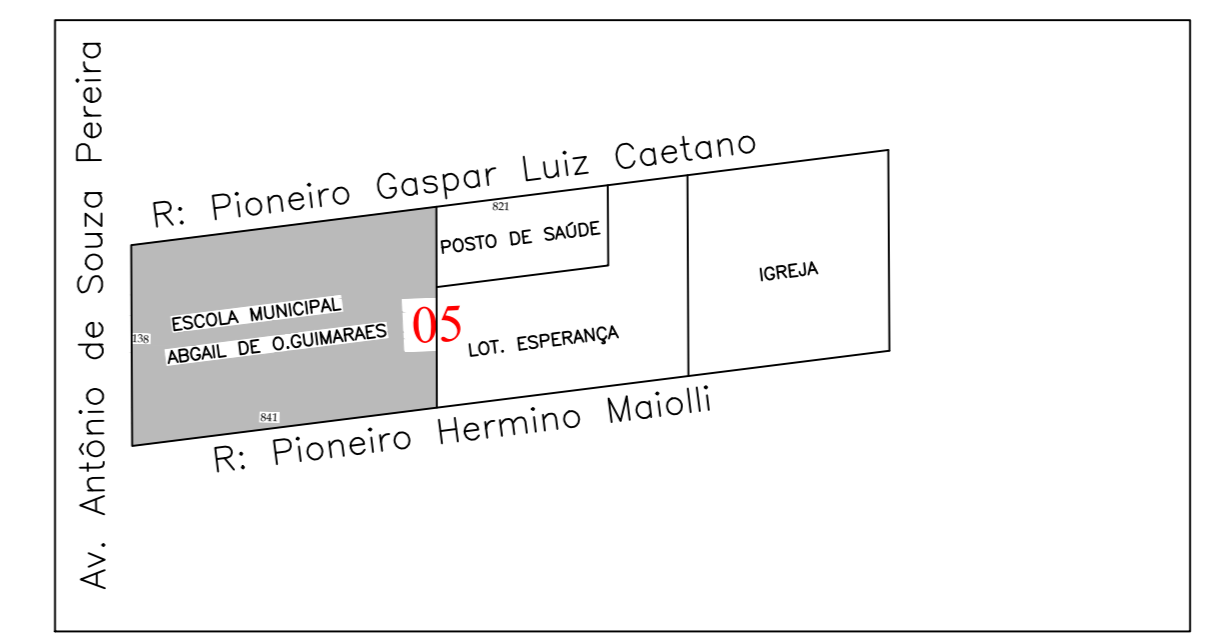
16 Corte D  
ESCALA 1:50



18 Corte F  
ESCALA 1:100



19 Corte F  
ESCALA 1:100



APROVAÇÕES	
Área do Terreno: 2.453,00m²	Área a Construir: 219,14m²
Área Existente: 1.261,88m²	Área Total: 1.481,08m²
Taxa Permeabilidade: %	Taxa de Ocupação: 60%

OBRAS DE ARQUITETURA	
Ampliação Escola Municipal Abgail de Oliveira Guimarães.	
Av. Pref. Antônio de Souza Pereira, Araruna - Pr.	
PROJETO	Arquitetônico
RESPONSÁVEL TÉCNICO:	PROPRIETÁRIO:
ADRIANE EVELYN FERREIRA GLOOR ENG. CIVIL, CREIA/PR-14184/02	PREFEITURA MUNICIPAL DE ARARUNA - PR CNPJ: 17.559.760/0001-99
ESCALA: Indicada	CONTEÚDO DA PRANCHA: Planta Baixa, Corte, Det. Muro, Det. Pinturas
DATA: 18/06/2026	PRANCHA: 04/04 DESENHO