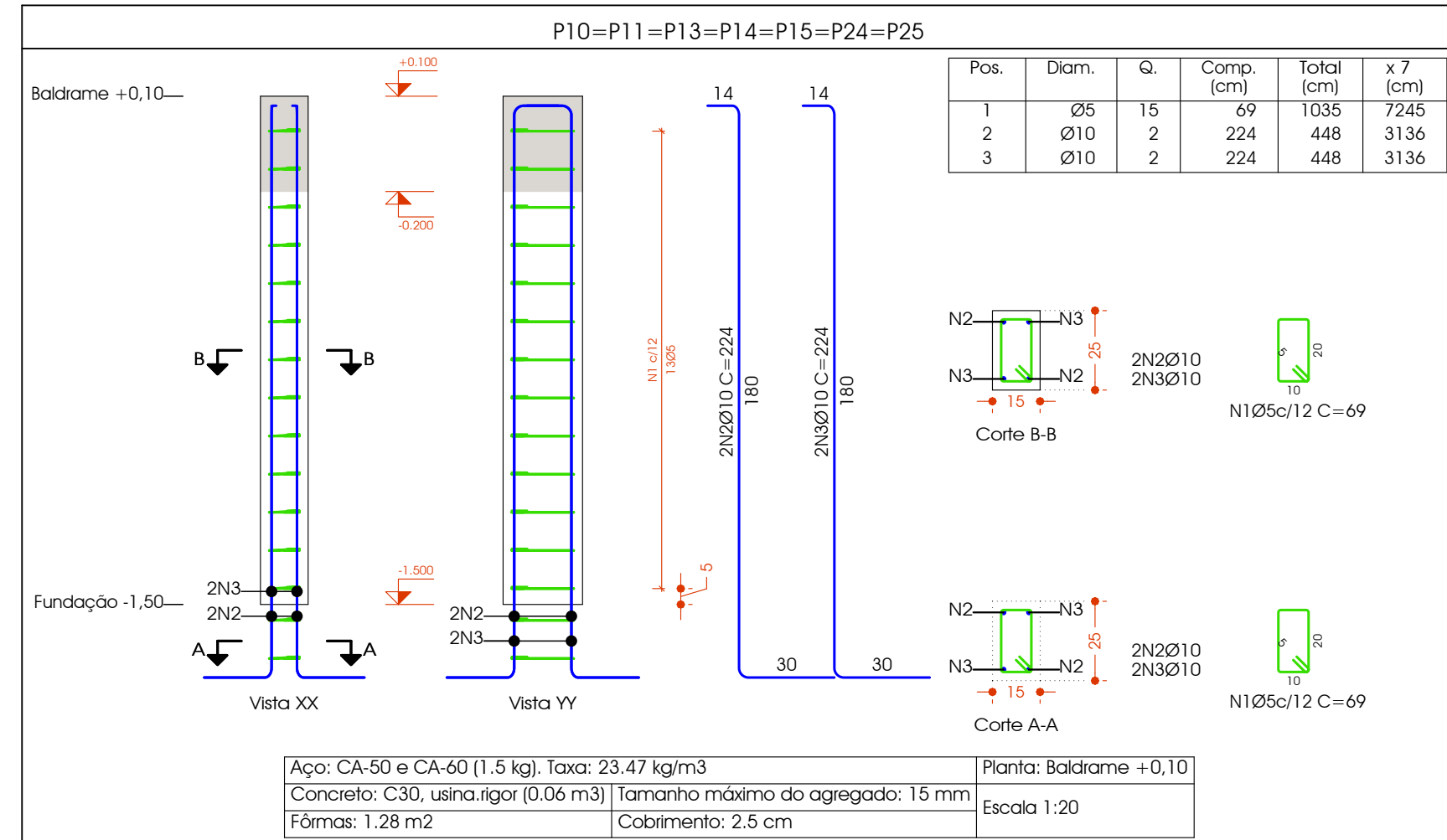
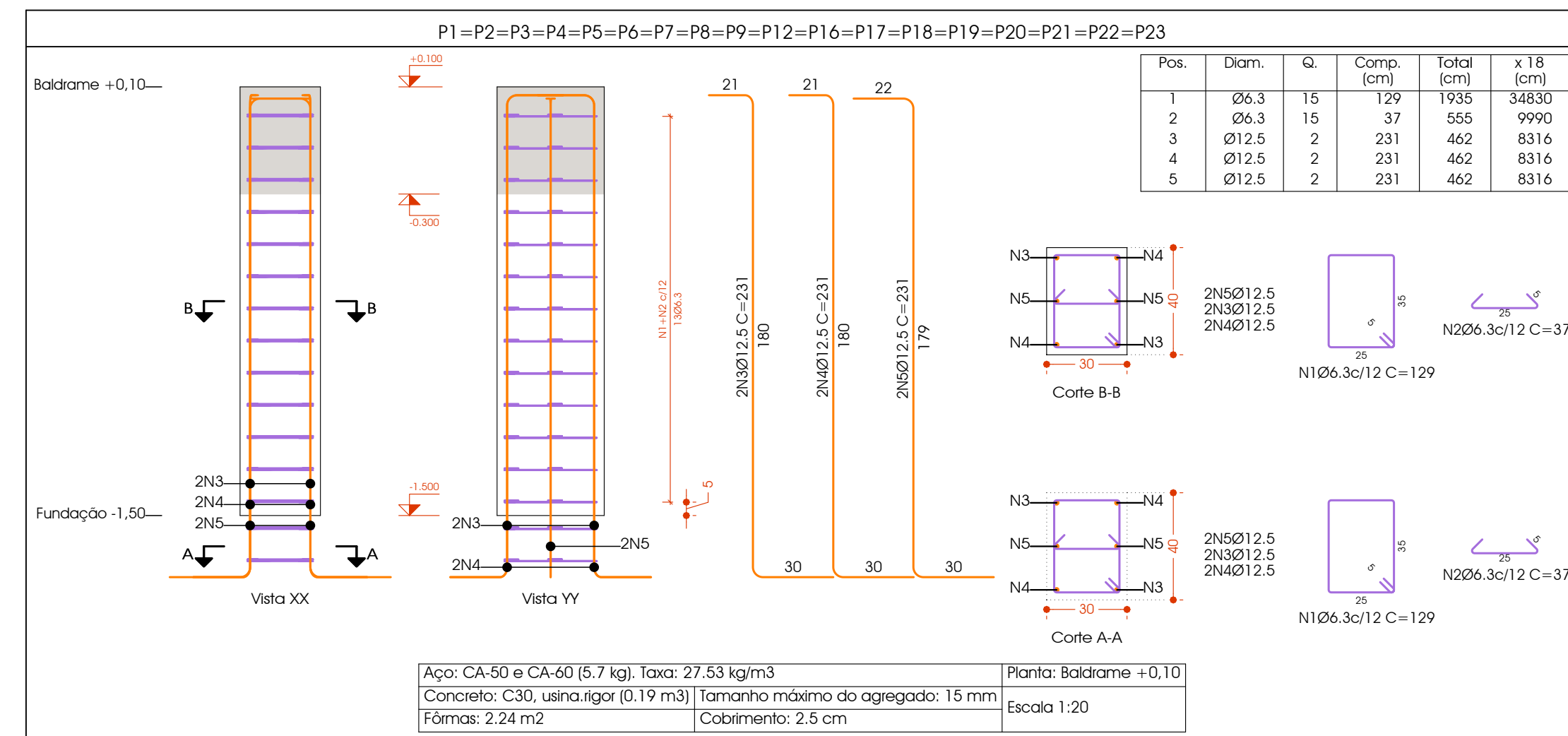


Scenario	Pos.	Q _{max}	Q _{0.05} (cm/s)	Q _{0.10} (cm/s)	Q _{0.20} (cm/s)	Q _{0.50} (cm/s)	Q _{1.00} (cm/s)	Q _{2.00} (cm/s)	Q _{5.00} (cm/s)
P1=P1+P13-P14 P1=P24-P25	1	255	10	129	97	109	1035	2.8	1.6
	2	210	10	224	148	224	448	2.8	1.9
	3	210	2	224	448	224	448	2.8	1.7
P1=P2-P3+P4+P5 P6=P7-P8+P9-P10 P11=P12-P13+P14-P15 P20=P21-P22-P23	1	266.3	10	129	97	109	1935	4.7	1.9
	2	266.3	15	37	555	1.4	555	1.4	1.4
	3	310.5	5	24	465	4.4	465	4.4	4.4
	4	412.5	2	231	465	4.4	231	465	4.4
	5	5212.5	2	231	465	4.4	231	465	4.4
				Q ₁₀ = 7%	20.7	(x18):	372.6		
				Q ₅ = 0%	0.0		0.0	11.9	
				Q ₁₀ = 42.0	0.0		0.0	11.9	
				Q ₁₀ = 41.6	11.9		41.6	11.9	

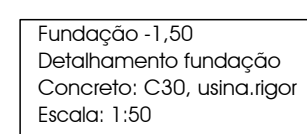
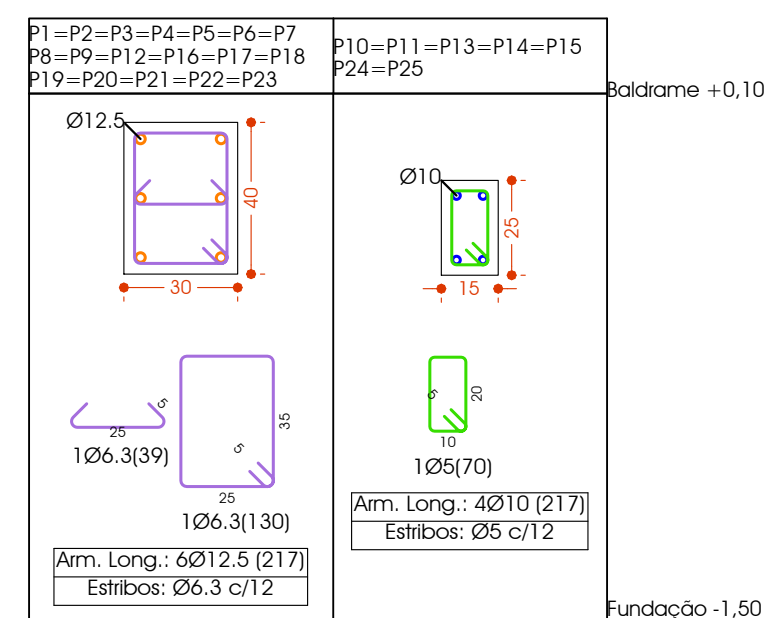
Bienio	Pos.	Diam.	Q	Dob. (cm)	Ret. (cm)	Dob. (cm)	Comp. (cm)	Total (cm)	CA-50 (kg)	CA-60 (kg)
P1=P2=P3=P4=P5	1	210	6	14	109	14	137	822	5.1	
P6=P7=P8=P9=P10	2	210	6	14	109	14	137	822	5.1	
P11=P12=P13=P14										
P20=P21=P22=P23										
								Total: 7%	10.9	
								(x18)	196.2	
P10=P11=P13=P14	3	210	4	11	64	11	86	344	2.1	
P15=P24=P25	4	210	4	11	64	11	86	344	2.1	
								Total: 7% (x7)	31.5	
								26.3	0.0	0.0
								010	22.7	0.0
								012.5	0.0	0.0
								Total: 22.7	0.0	0.0

Resumo Aço Fundação -1.50 Detalhamento fundação	Comp. total (m)	Peso + 7% (kg)
CA-50 Ø10	344.1	227

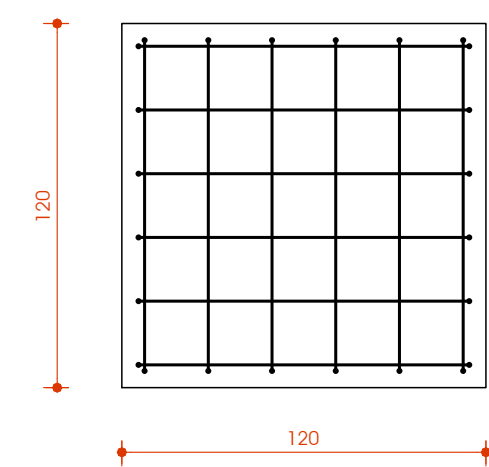
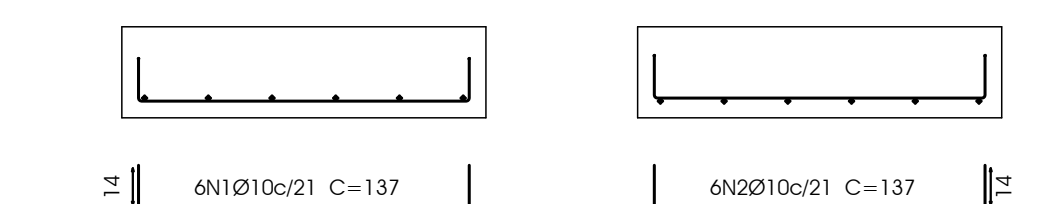
Quadro de pilares
Escala 1:20
Concreto: C30, usina.rigor
Aço dos estribos: CA-50 e CA-60



Resumo Aço Quadro de pilares	Comp. total (m)	Peso + 7% (kg)	Total
CA-50 Ø6.3	448.2	117	
Ø10	62.7	41	
Ø12.5	249.5	257	415
CA-60 Ø5	72.5	12	12
Total			427



P1, P2, P3, P4, P5, P6, P7, P8, P9, P12, P16, P17, P18, P19, P20, P21, P22 e P23



P10, P11, P13, P14, P15, P24 e P25

