

**NOTAS**

- CONFERRIR AS MEDIDAS IN-LOCO.

0	EMISSÃO DO PROJETO	SET/2025	A.R.O.	A.R.O.
REV.	MODIFICAÇÃO	DATA	VERIF.	APROV.

**ADA ENGENHARIA E CONSTRUÇÃO LTDA**

OBRA: **PAVIMENTAÇÃO URBANA :: ESTRADA MUNICIPAL FREI EURICO DE MELO**

PROPRIETÁRIO: **PREFEITURA MUNICIPAL DE TIJUCAS DO SUL**

AUTOR DO PROJETO: **ADALTON ROGÉRIO DE OLIVEIRA**

PRONCHA: **PROJETO DETALHES DE DRENAGEM**

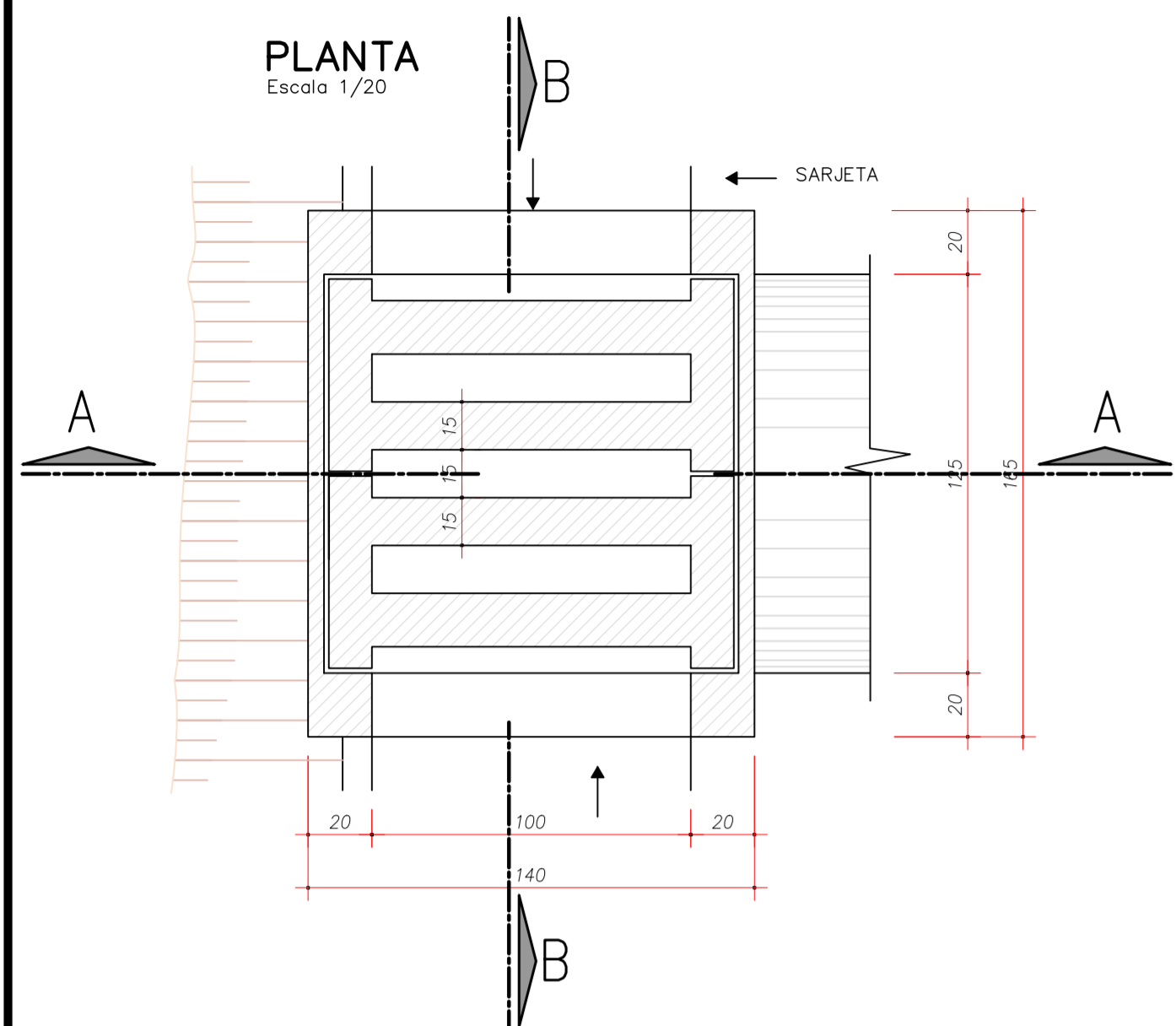
SEQUENCIA: **01/03**

DATA: **SETEMBRO/2025**

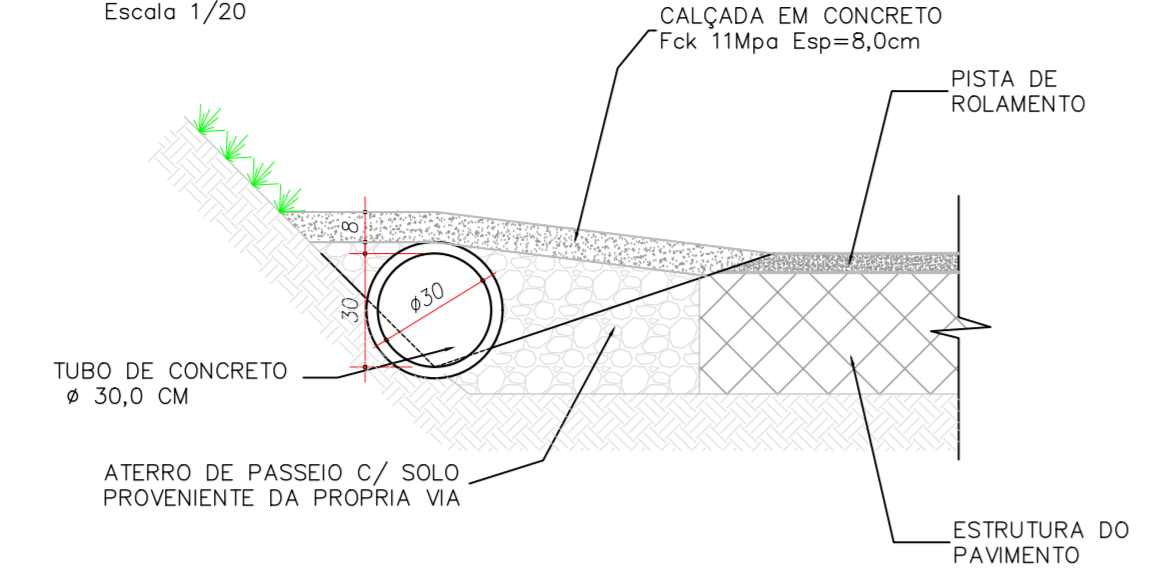
ESCALA: **1:500**

REVISÃO: **00**

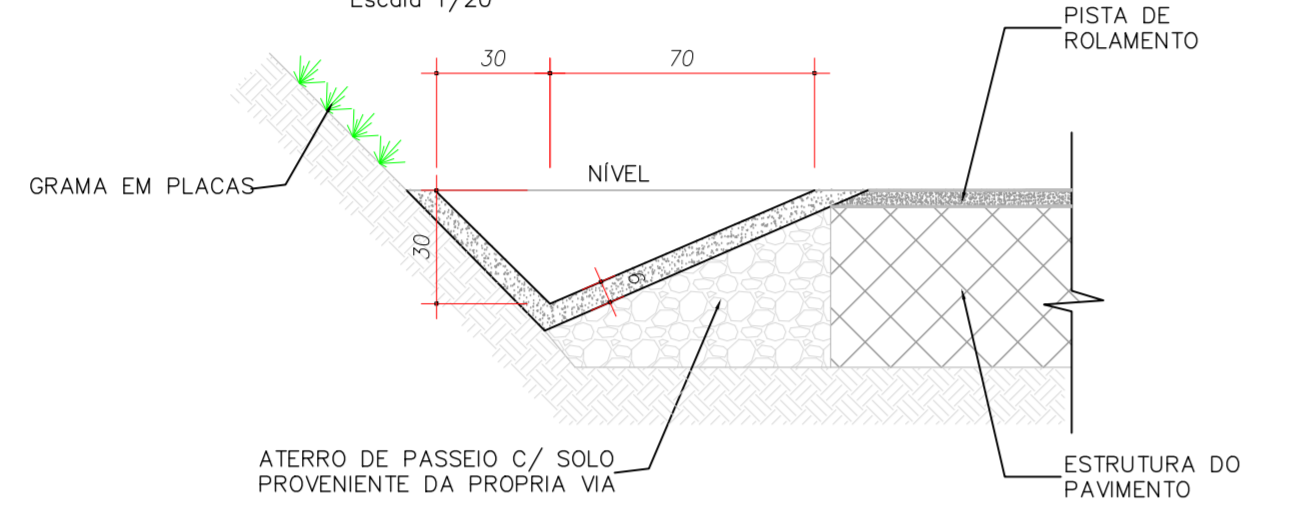
**CX. COLETORA DE SARJETA (CCS) COM GRELHA DE CONCRETO**  
Escala 1/20



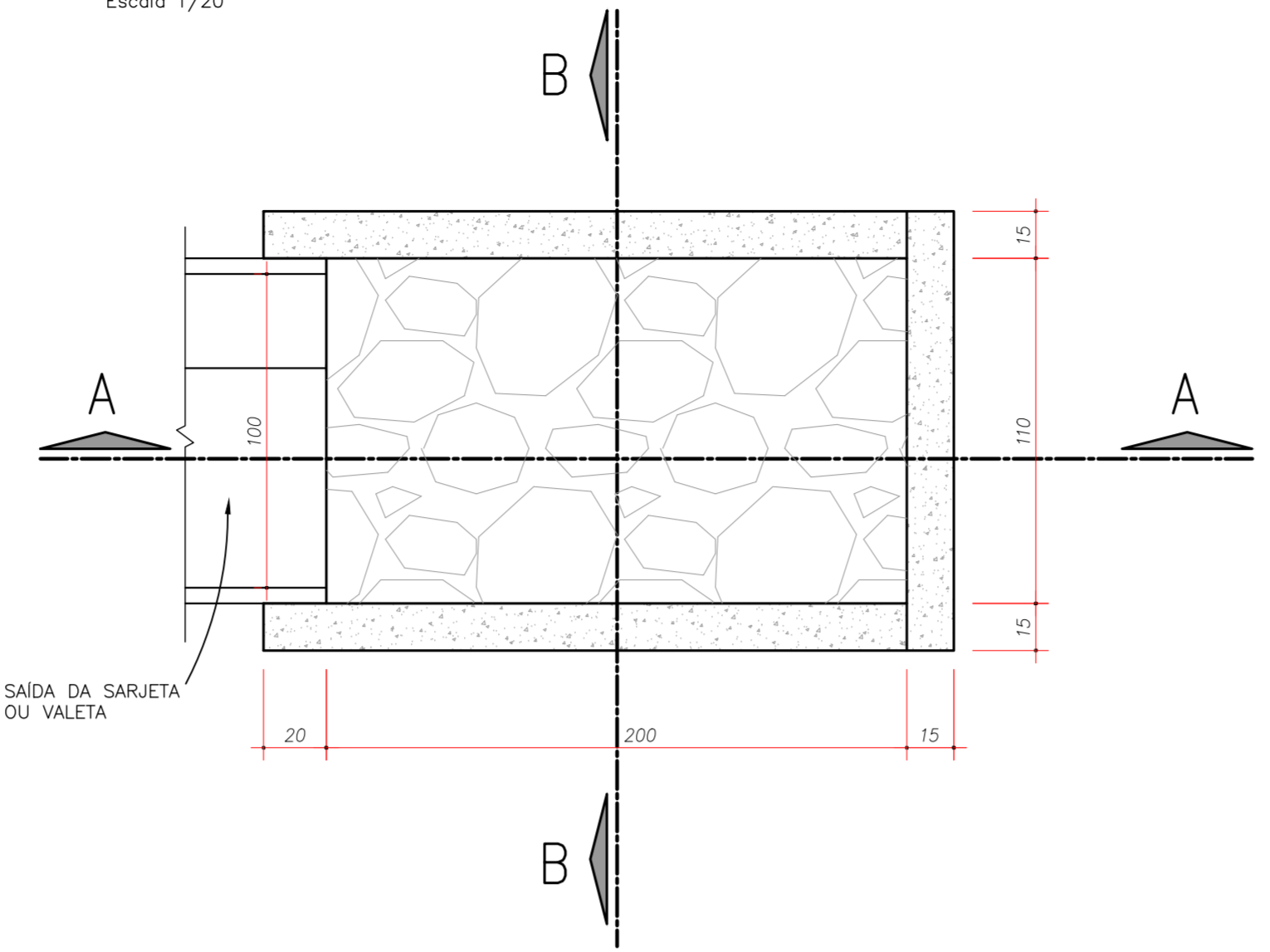
**DETALHE ENTRADA MORADORES**  
Escala 1/20



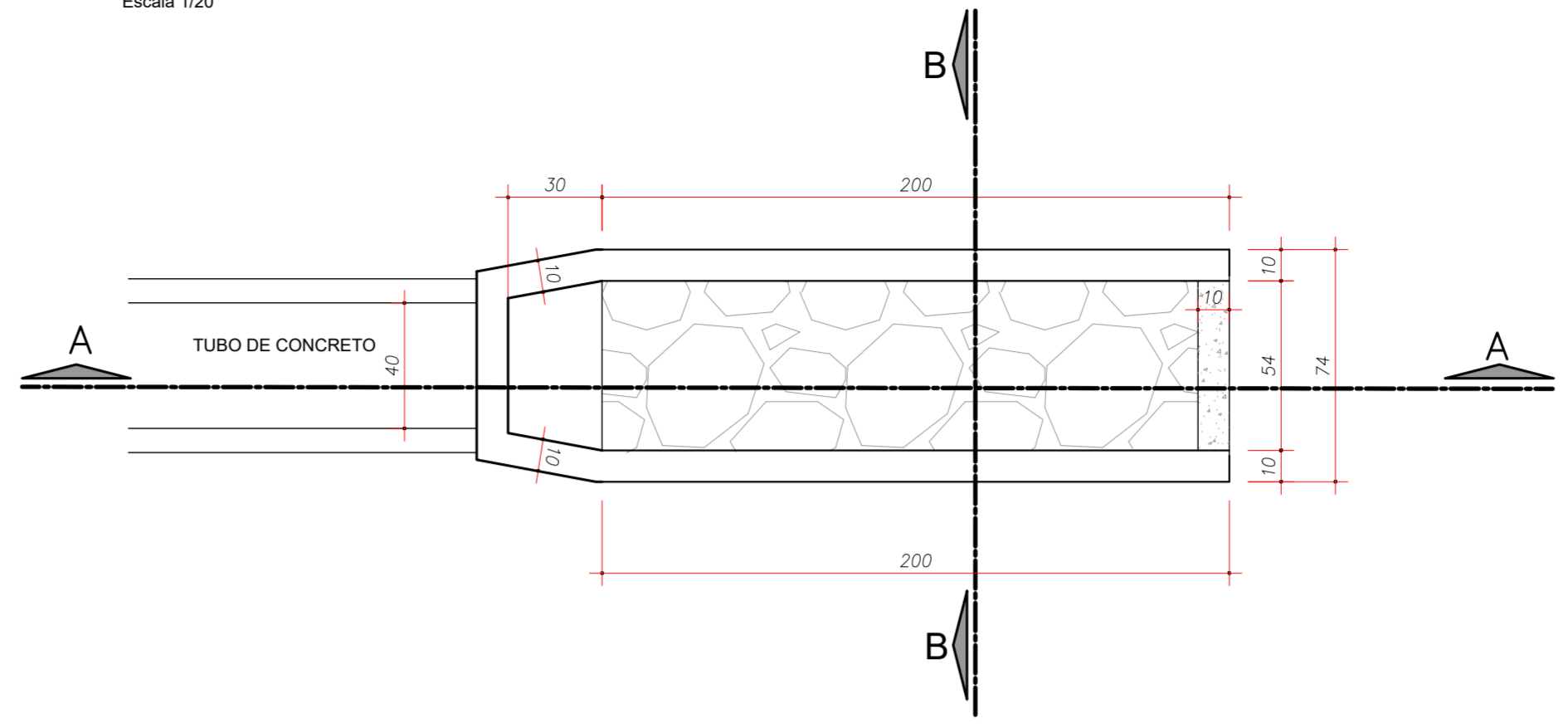
**SARJETA TRIANGULAR DE CONCRETO TIPO 2**  
Escala 1/20



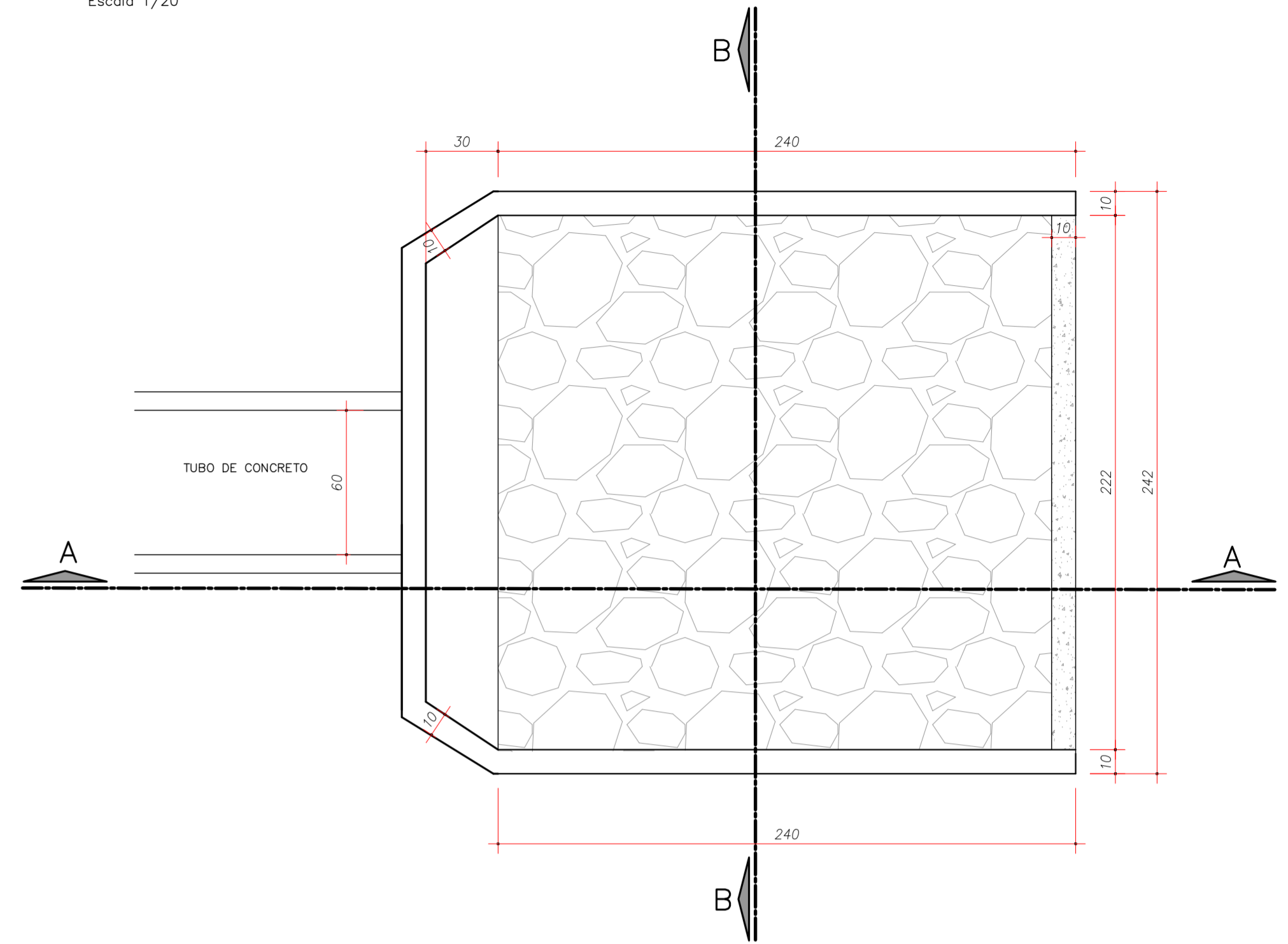
**DISSIPADOR DE ENERGIA DE SARJETA TIPO 2**  
Escala 1/20



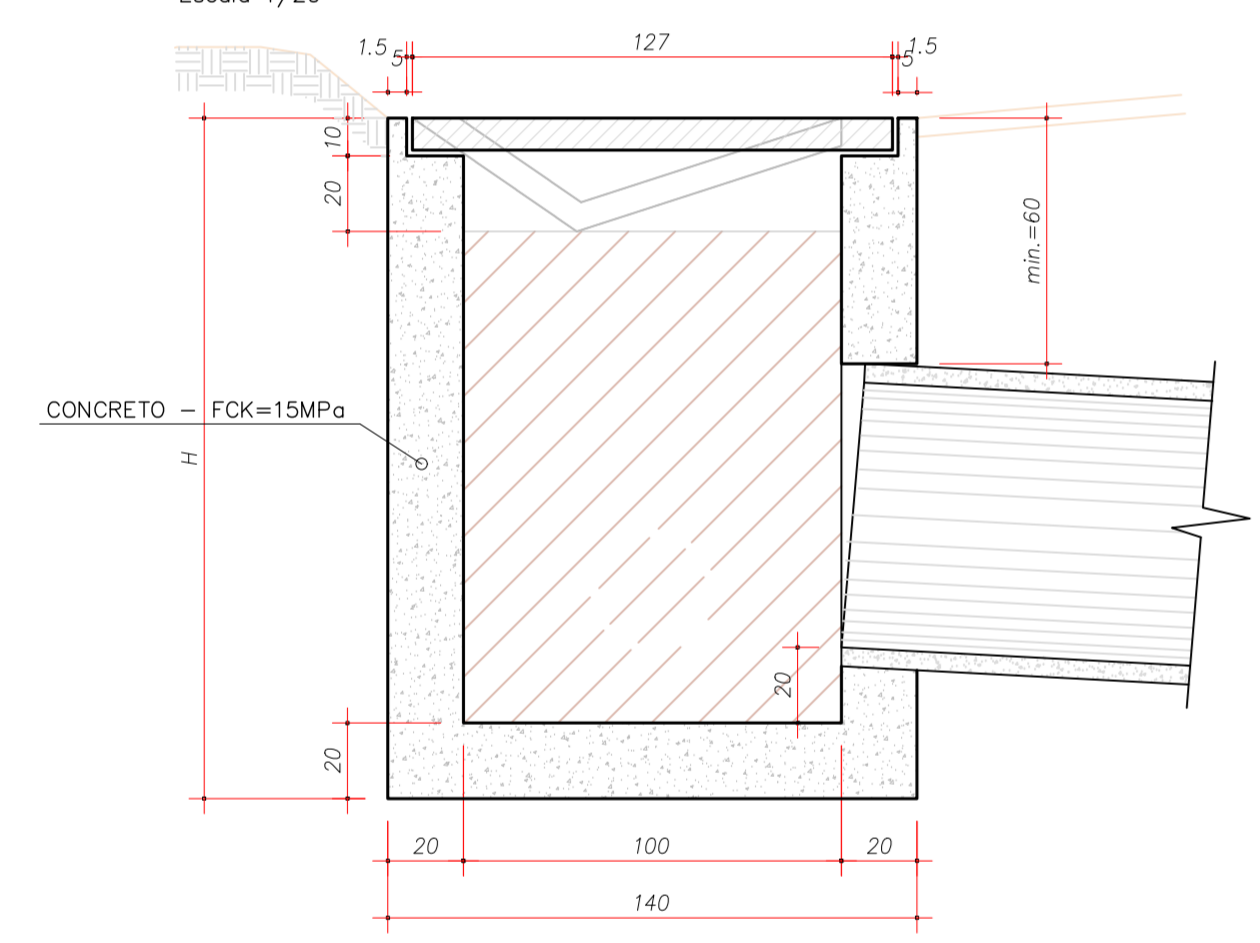
**DISSIPADOR DE ENERGIA Ø 0,40m**  
Escala 1/20



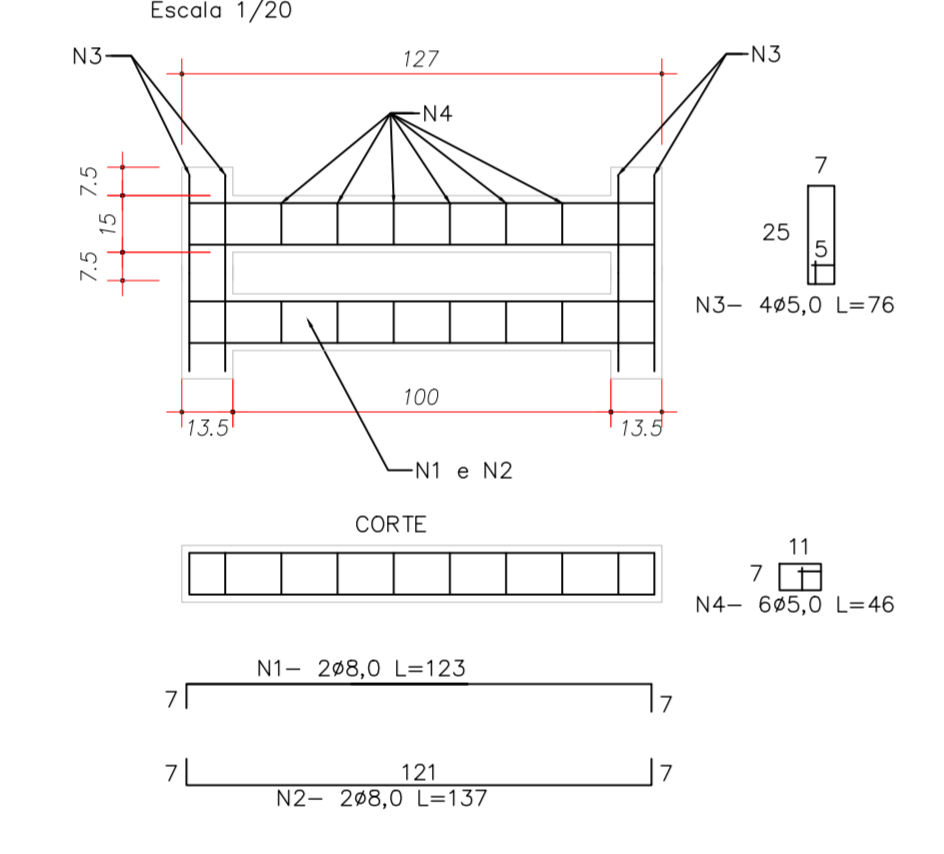
**DISSIPADOR DE ENERGIA Ø 0,60m**  
Escala 1/20



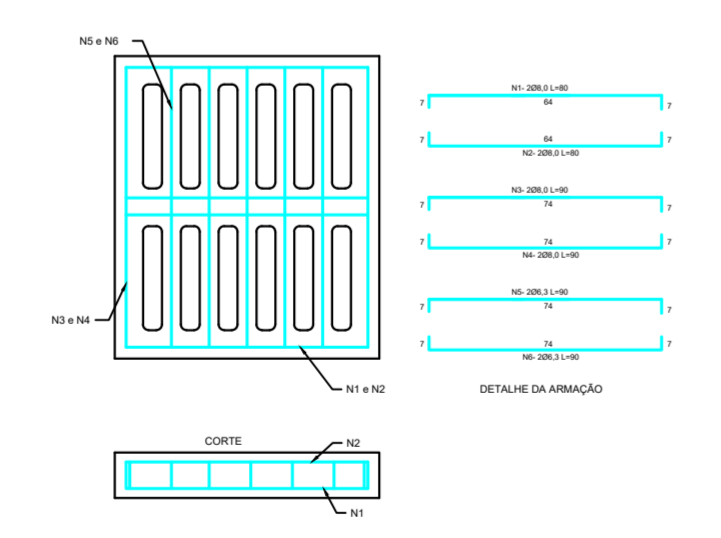
**CORTE A-A**  
Escala 1/20



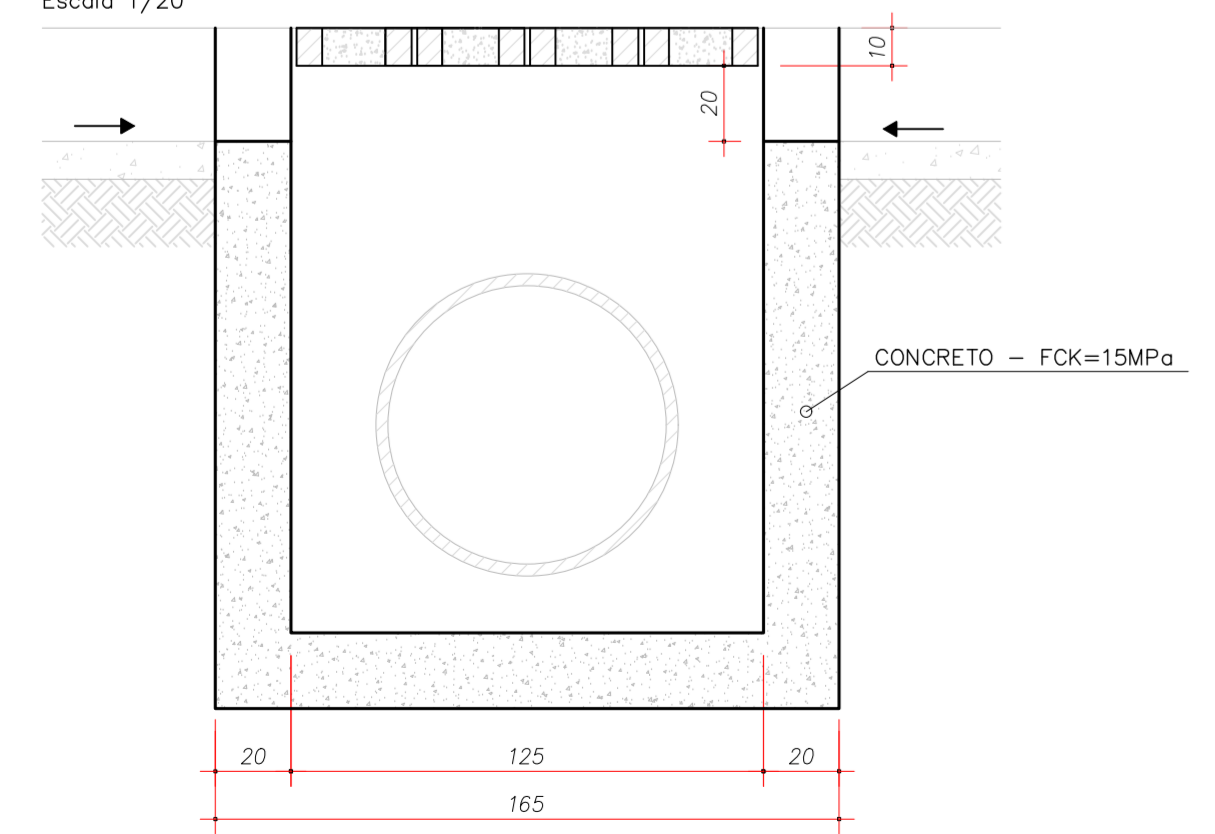
**PLANTA DETALHE NERVURAS (CCS)**  
Escala 1/20



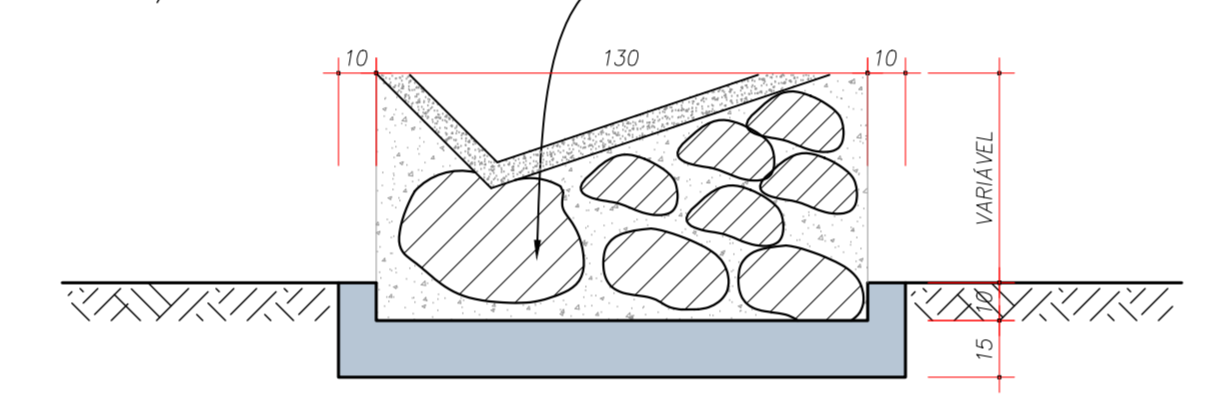
**PLANTA NERVURAS-GRELHA CONCRETO**  
Escala 1/10



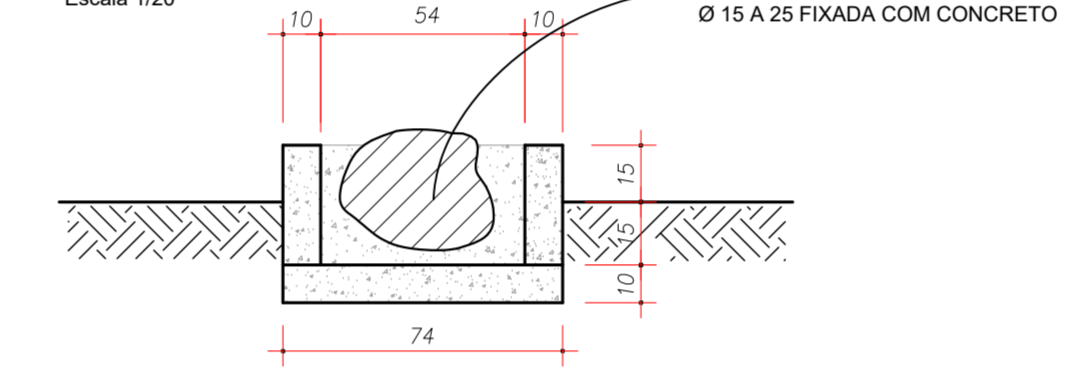
**CORTE B-B**  
Escala 1/20



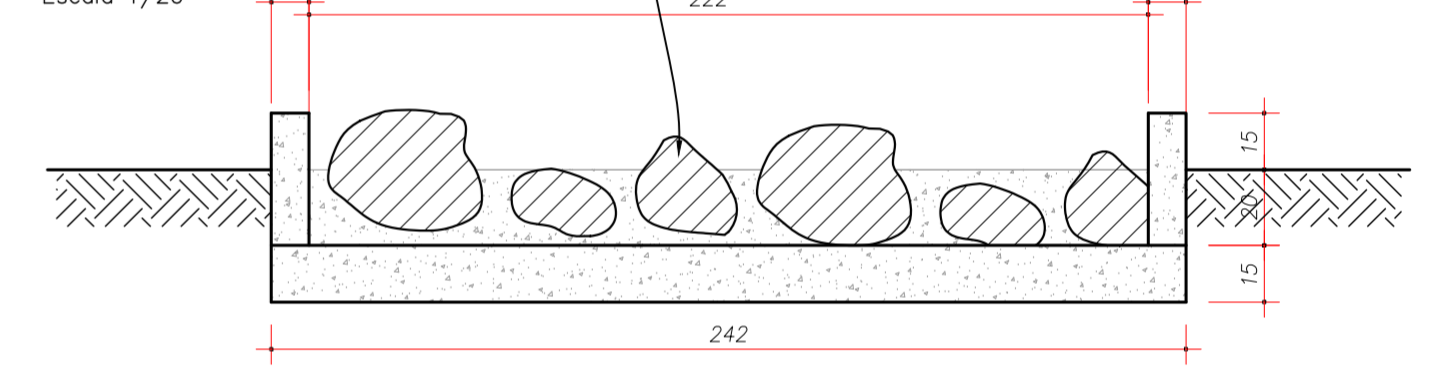
**CORTE BB**  
Escala 1/20



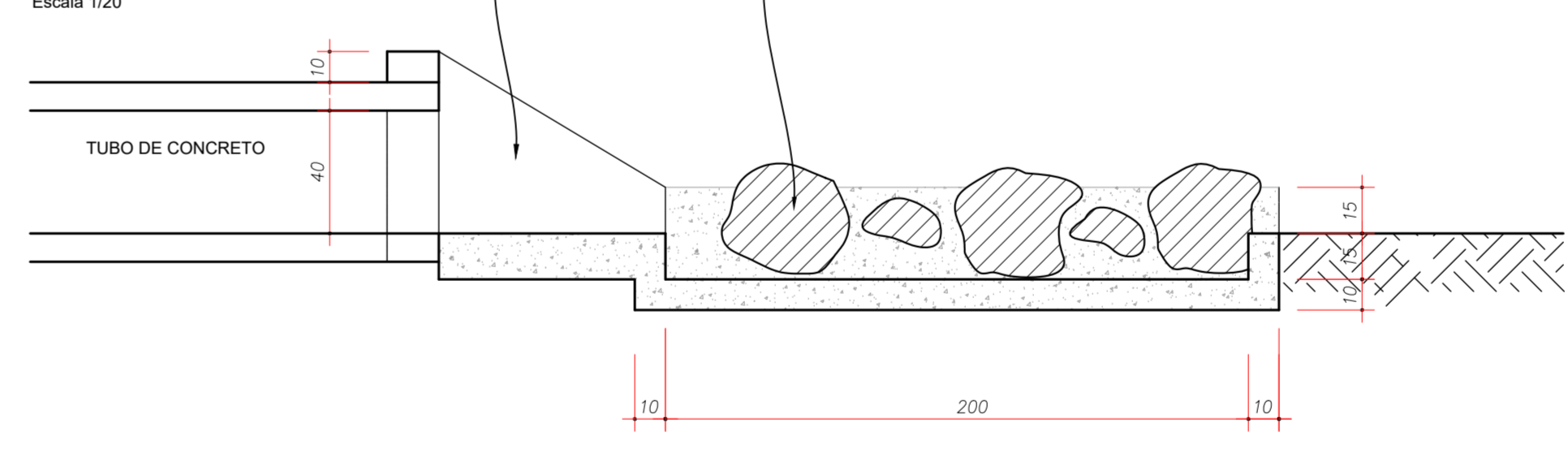
**CORTE BB**  
Escala 1/20



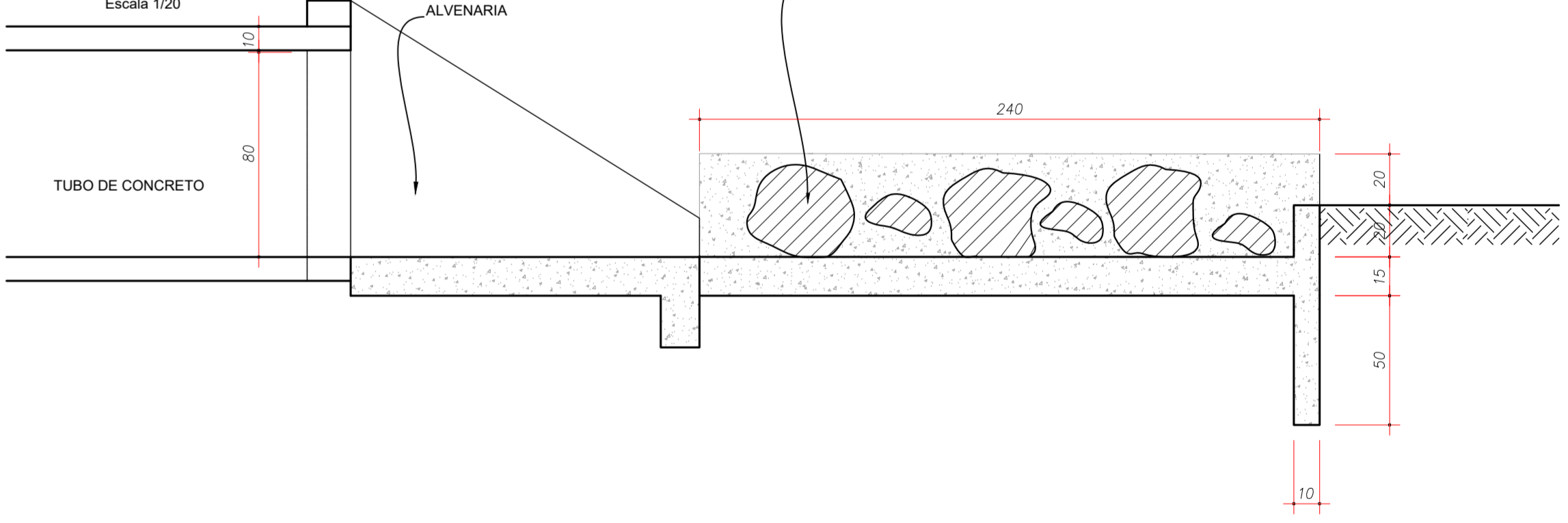
**CORTE BB**  
Escala 1/20



**CORTE AA**  
Escala 1/20



**CORTE AA**  
Escala 1/20



**NOTAS**

- CONFERRIR AS MEDIDAS IN-LOCO.

REV.	EMISSÃO DO PROJETO	DATA	VERIF.	A.P.R.O.	A.R.O.
0	EMISSÃO DO PROJETO	SET/2025			
	MODIFICAÇÃO				

**ADA ENGENHARIA E CONSTRUÇÃO LTDA.**

**TIJUCAS DO SUL**  
PREFEITURA MUNICIPAL

**OBRA: PAVIMENTAÇÃO URBANA :: ESTRADA MUNICIPAL FREI EURICO DE MELO**

PROPRIETÁRIO: PREFEITURA MUNICIPAL DE TIJUCAS DO SUL  
ASSINATURA: \_\_\_\_\_

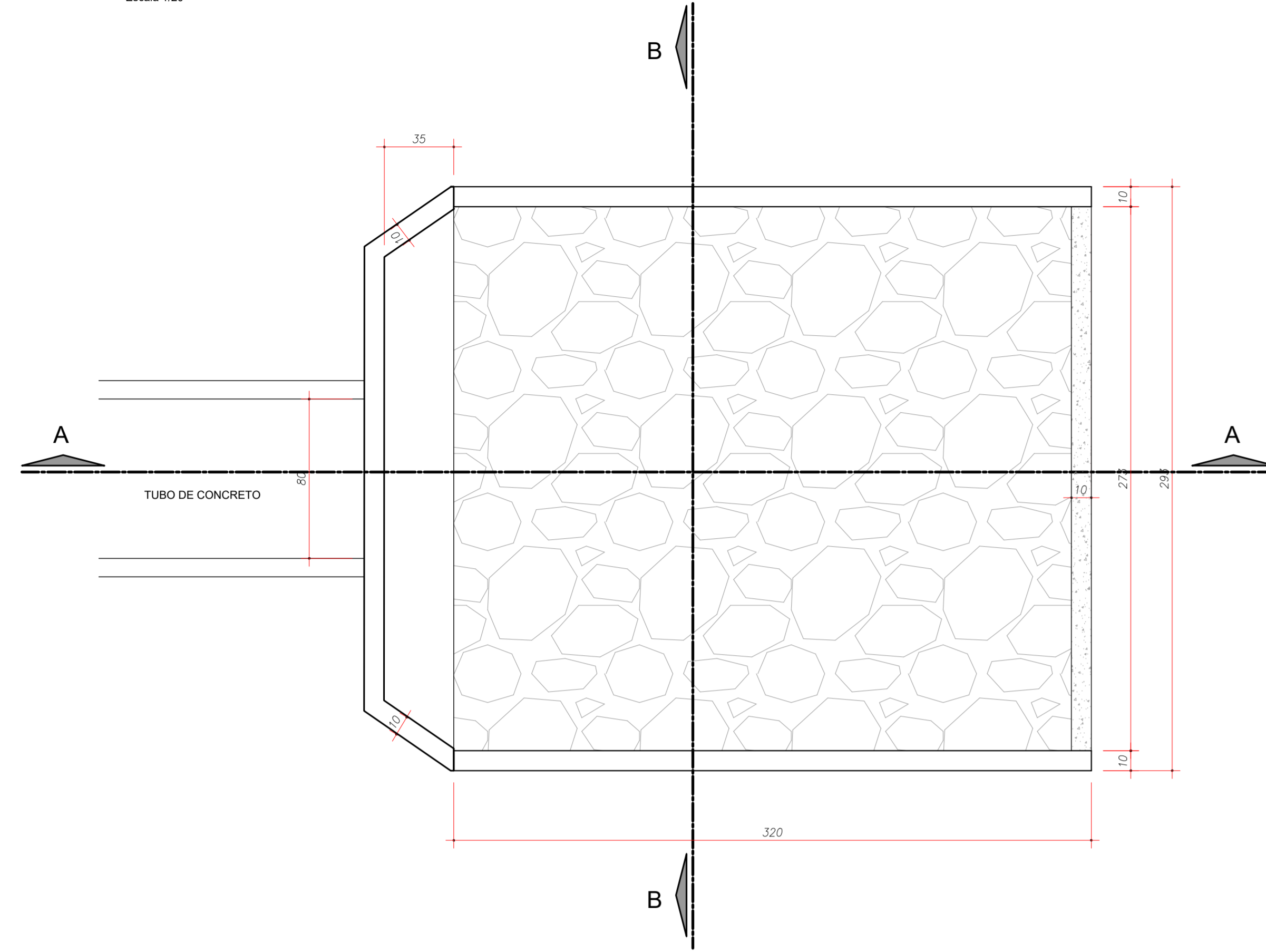
AUTOR DO PROJETO: ADAILTON ROGÉRIO DE OLIVEIRA  
ENGENHEIRO CIVIL - CREA/PR 68.917/D  
ART nº: \_\_\_\_\_

PRANCHA: **PROJETO DETALHES DE DRENAGEM**

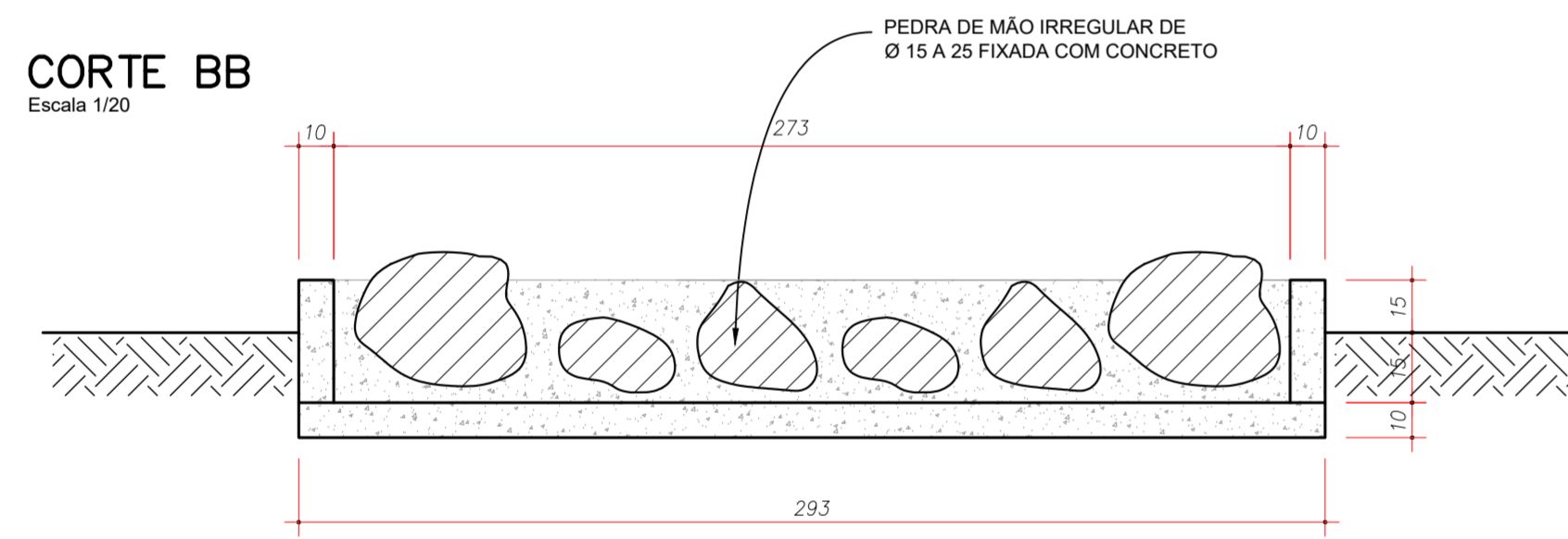
ARQUIVO: ESTRADA\_MUNICIPAL\_FREI\_EURICO\_MELO-DDR-PG-002.dwg  
DESENHO: J.P.N.  
DATA: SETEMBRO/2025  
ESCALA: 1:500  
REVISÃO: 00

SEQUENCIA: **02** de **03**

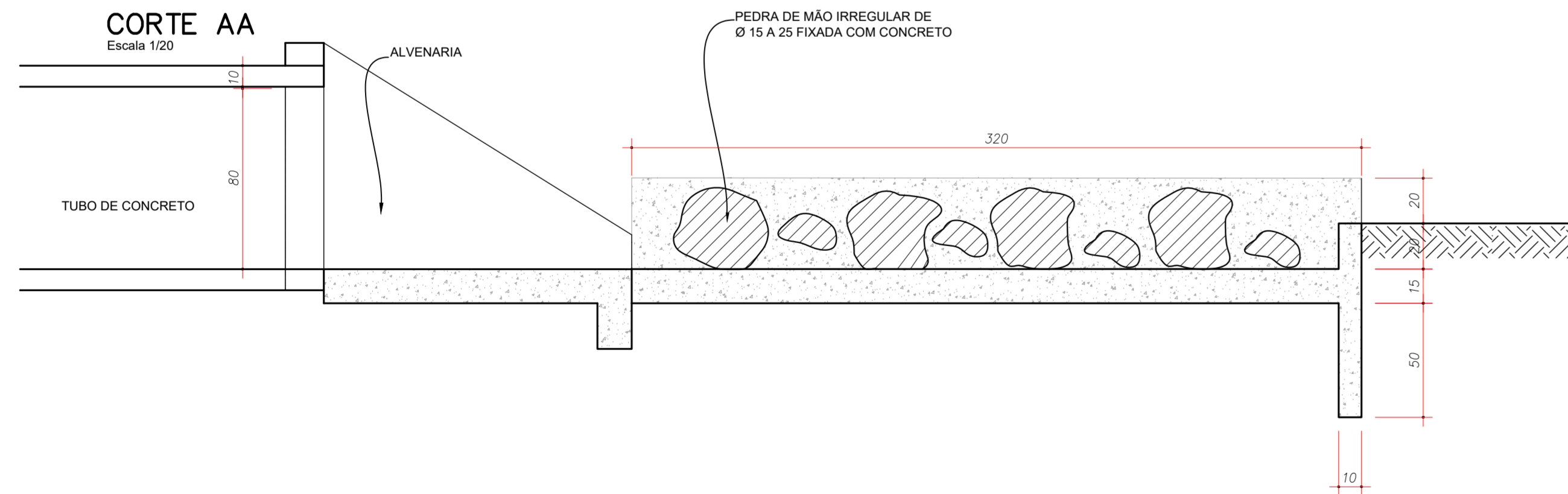
DISSIPADOR DE ENERGIA Ø 0,80m  
Escala 1/20



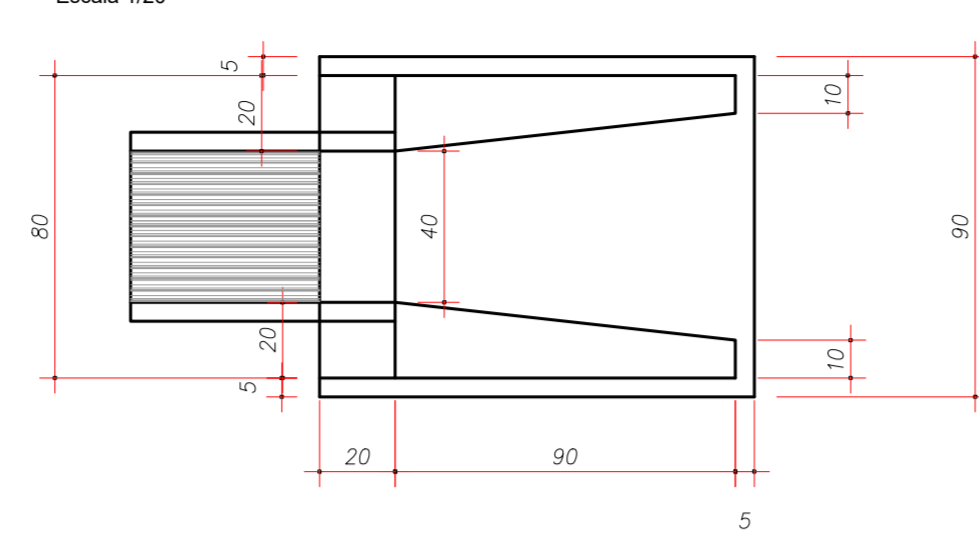
CORTE BB  
Escala 1/20



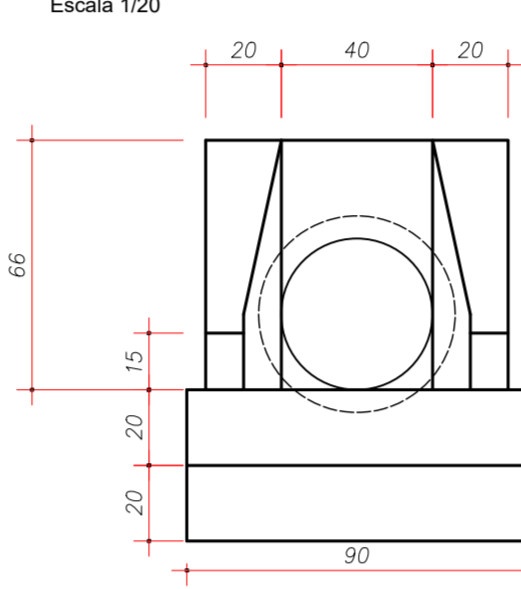
CORTE AA  
Escala 1/20



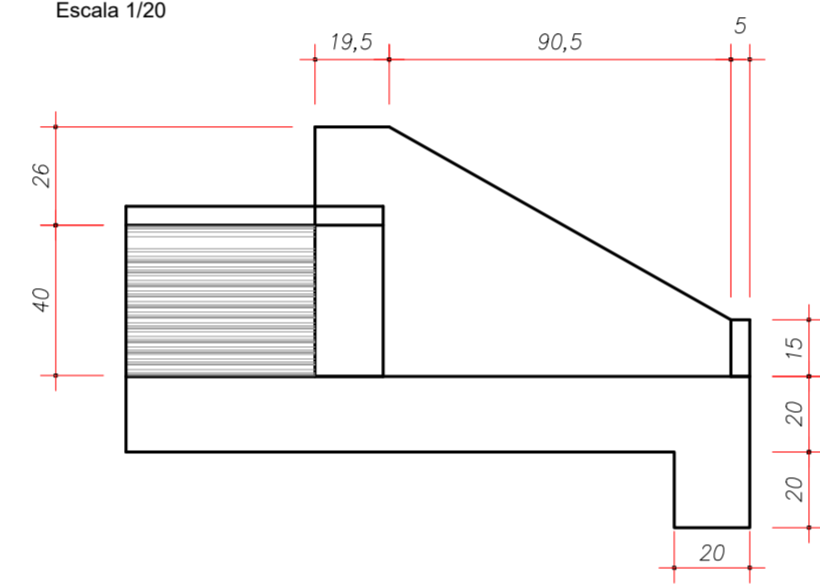
ALA BSTC Ø 0,40m  
Escala 1/20



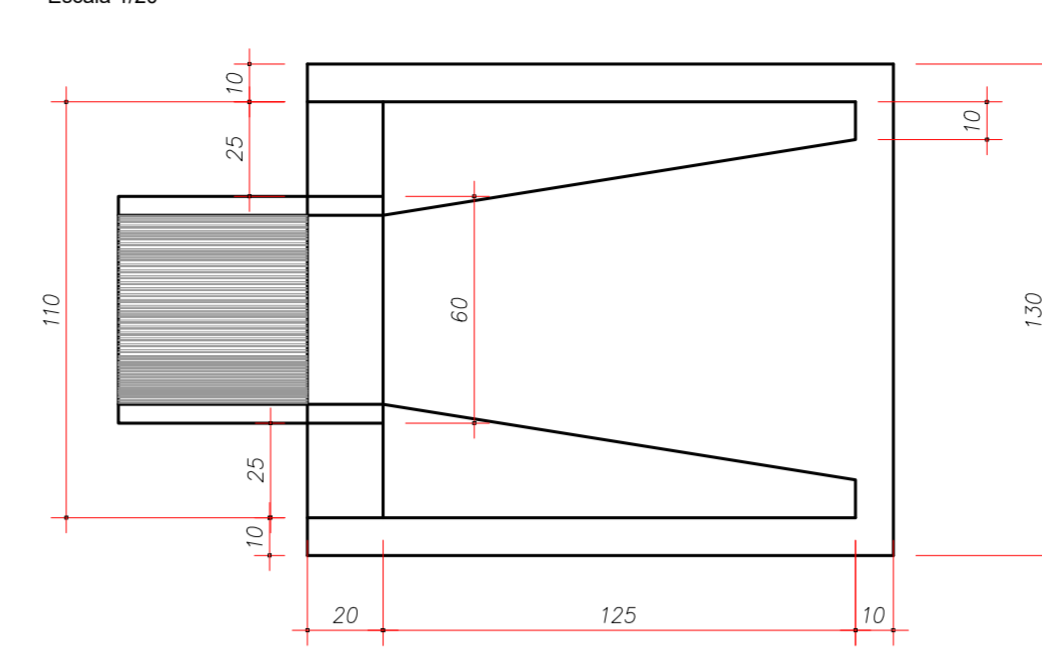
VISTA FRONTAL  
Escala 1/20



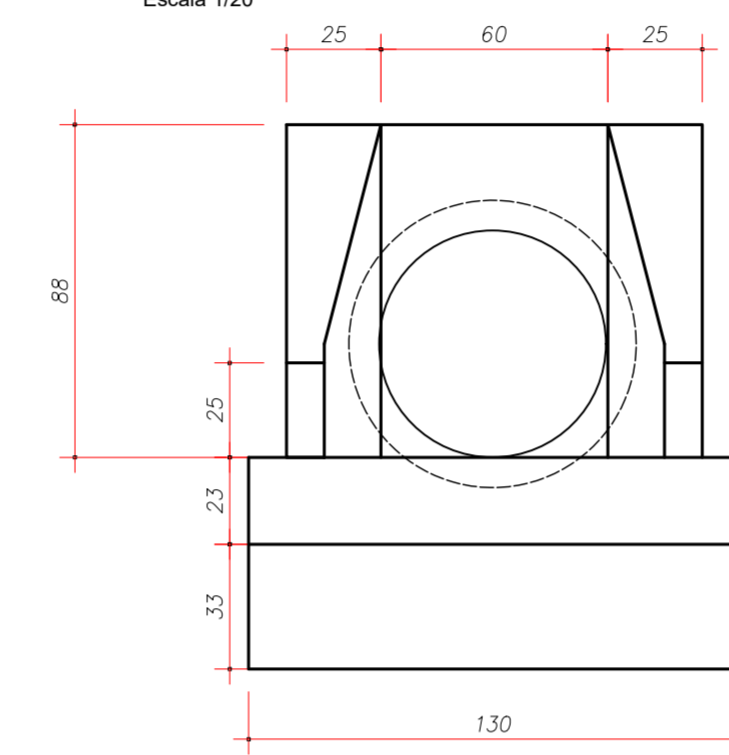
VISTA LATERAL  
Escala 1/20



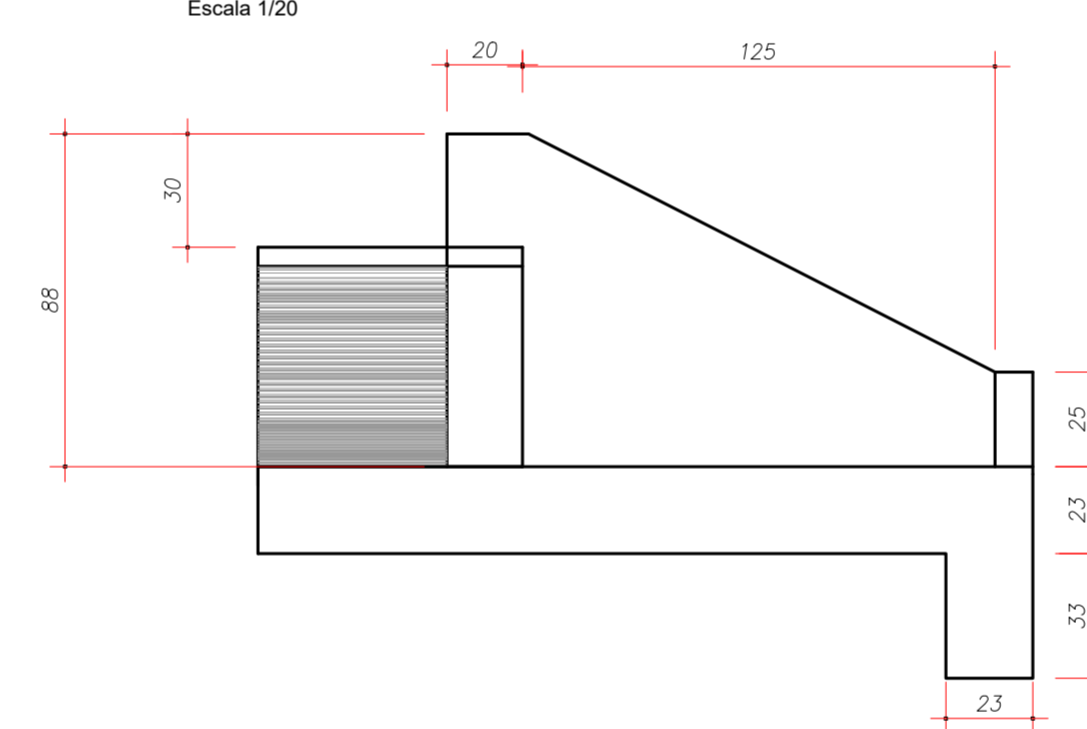
ALA BSTC Ø 0,60m  
Escala 1/20



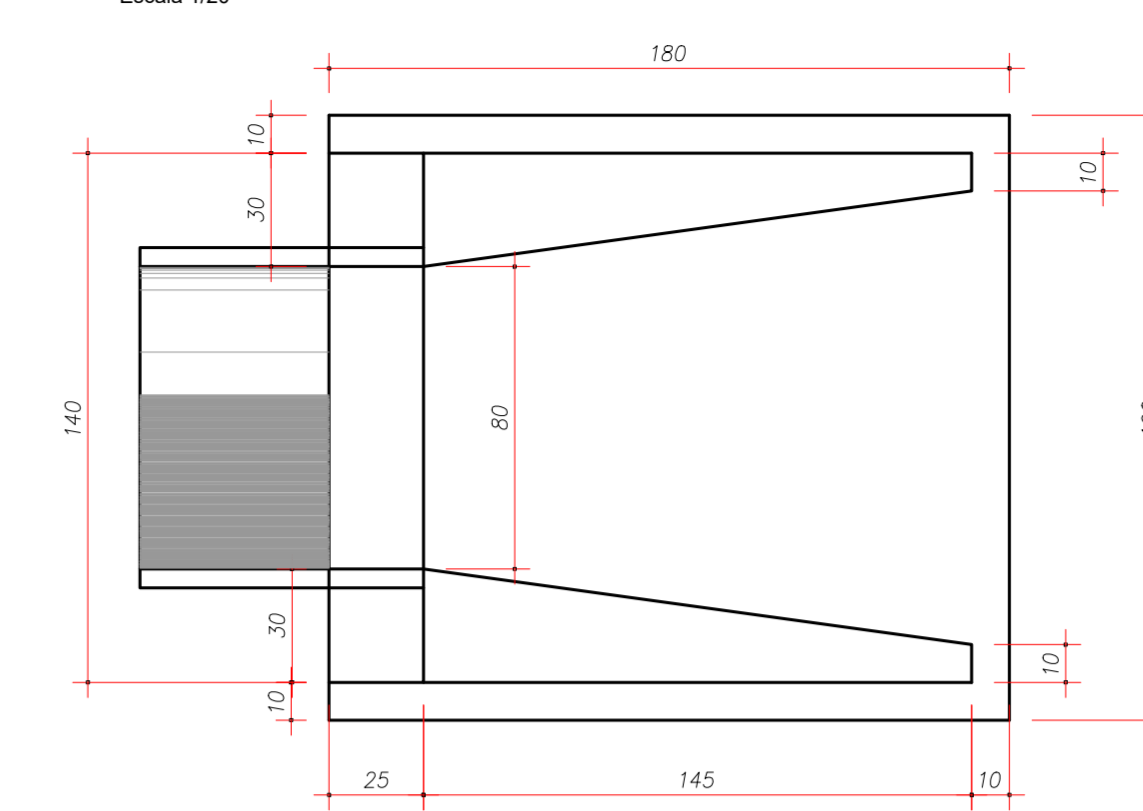
VISTA FRONTAL  
Escala 1/20



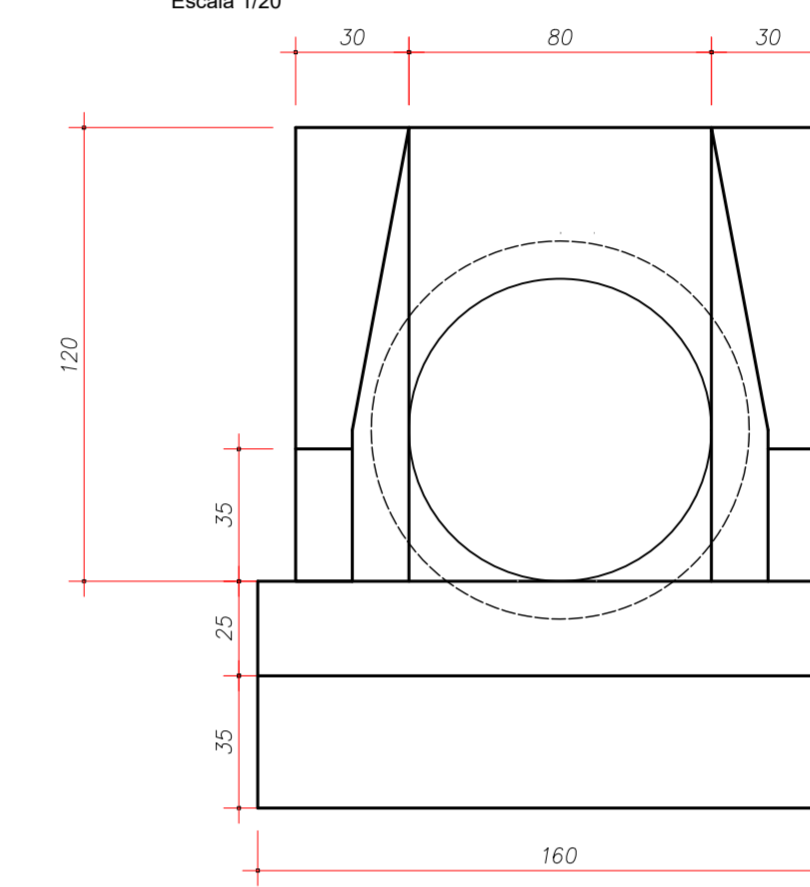
VISTA LATERAL  
Escala 1/20



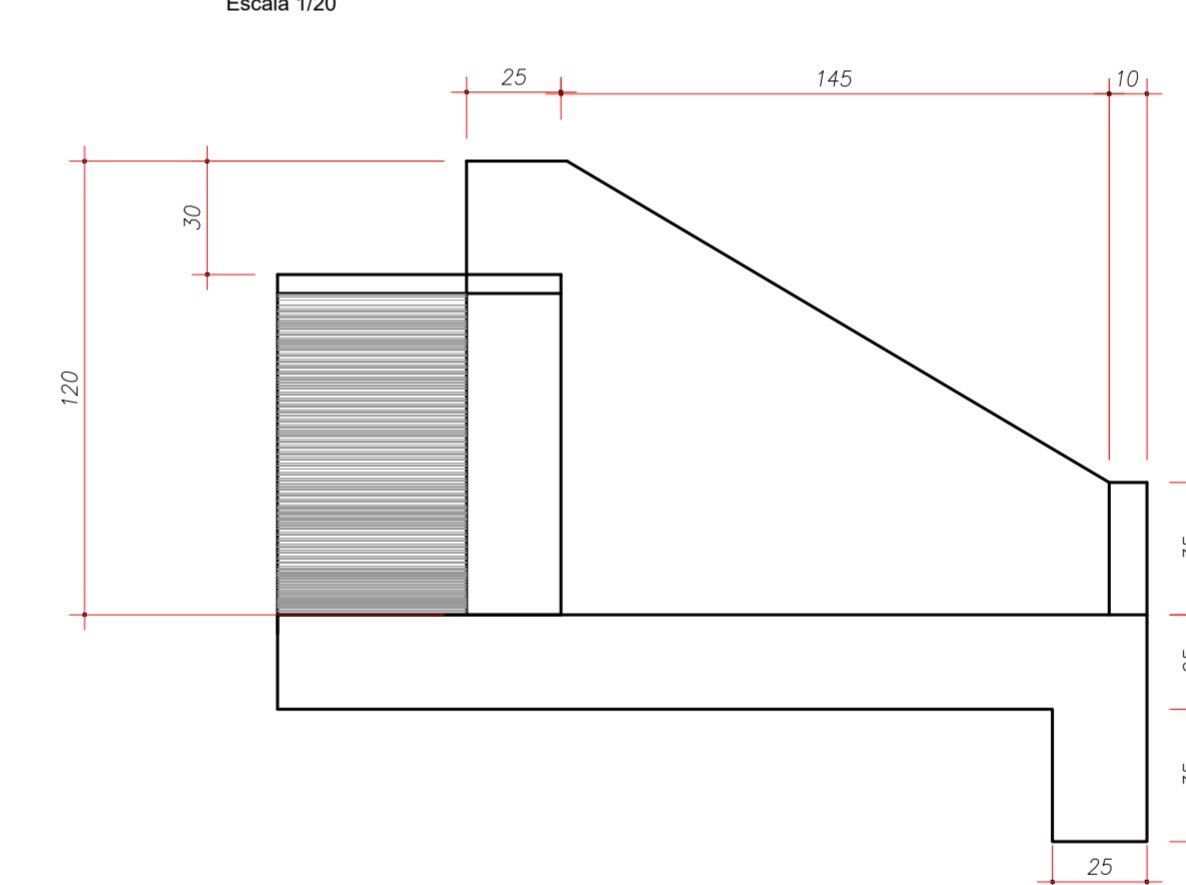
ALA BSTC Ø 0,80m  
Escala 1/20



VISTA FRONTAL  
Escala 1/20



VISTA LATERAL  
Escala 1/20



NOTAS					
1. CONFERIR AS MEDIDAS IN-LOCO.					
0	EMISSÃO DO PROJETO	SET/2025	A.R.O.	A.R.O.	
REV.	MODIFICAÇÃO	DATA	VERIF.	APROV.	

**OBRA:** PAVIMENTAÇÃO URBANA :: ESTRADA MUNICIPAL FREI EURICO DE MELO  
**PROPRIETÁRIO:** PREFEITURA MUNICIPAL DE TIJUCAS DO SUL  
**ENGENHEIRO CIVIL - CREA PR 68.917/D**

**AUTOR DO PROJETO:** ADAILTON ROGÉRIO DE OLIVEIRA  
**ENGENHEIRO CIVIL - CREA PR 68.917/D**

**PROJETO DETALHES DE DRENAGEM**  
**DETALHES**

**ARQUIVO:** ESTRADA\_MUNICIPAL\_FREI\_EURICO\_MELO-DDR-P2-000.dwg  
**DESENHO:** J.P.N.  
**DATA:** SETEMBRO/2025  
**ESCALA:** 1:500  
**REVISÃO:** 00