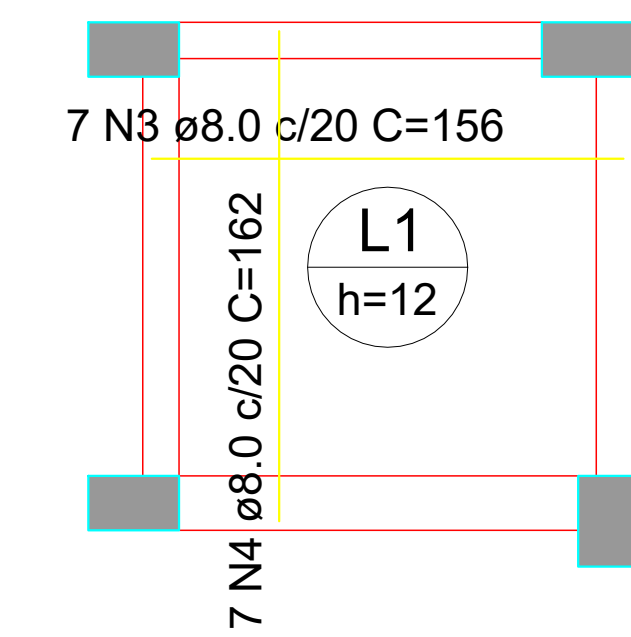
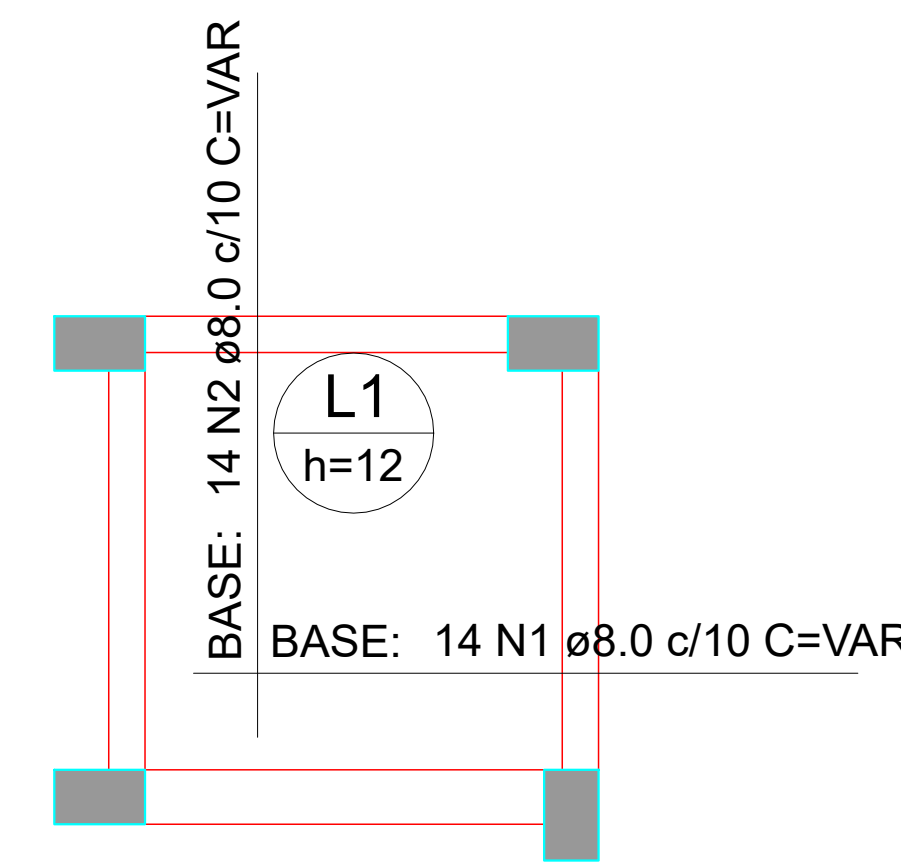
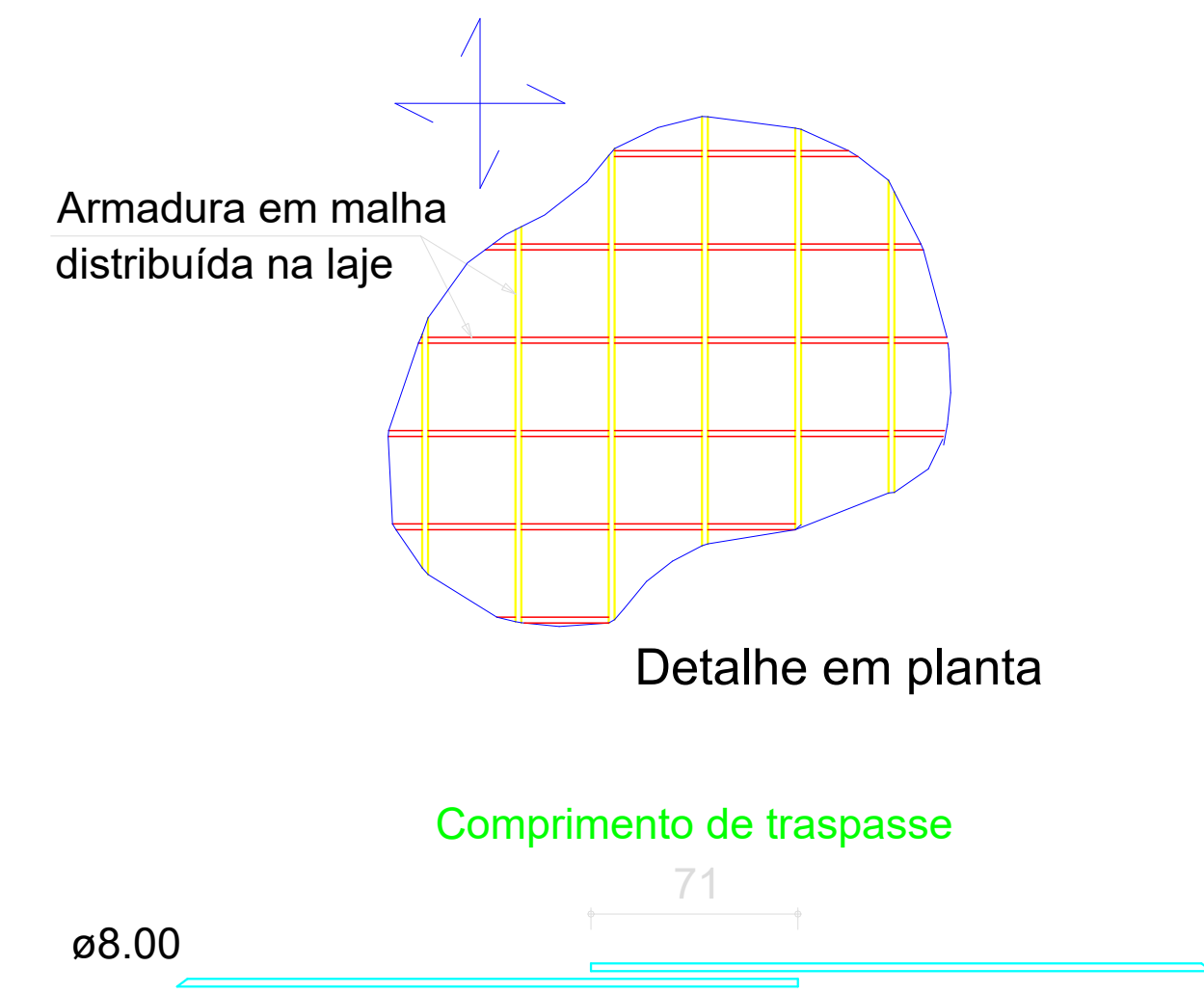


DETALHE DA ARMADURA DE MALHA BASE



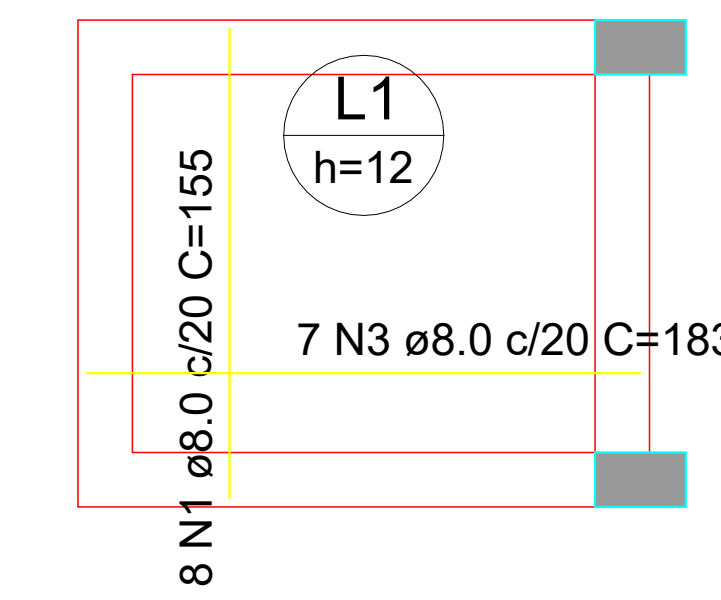
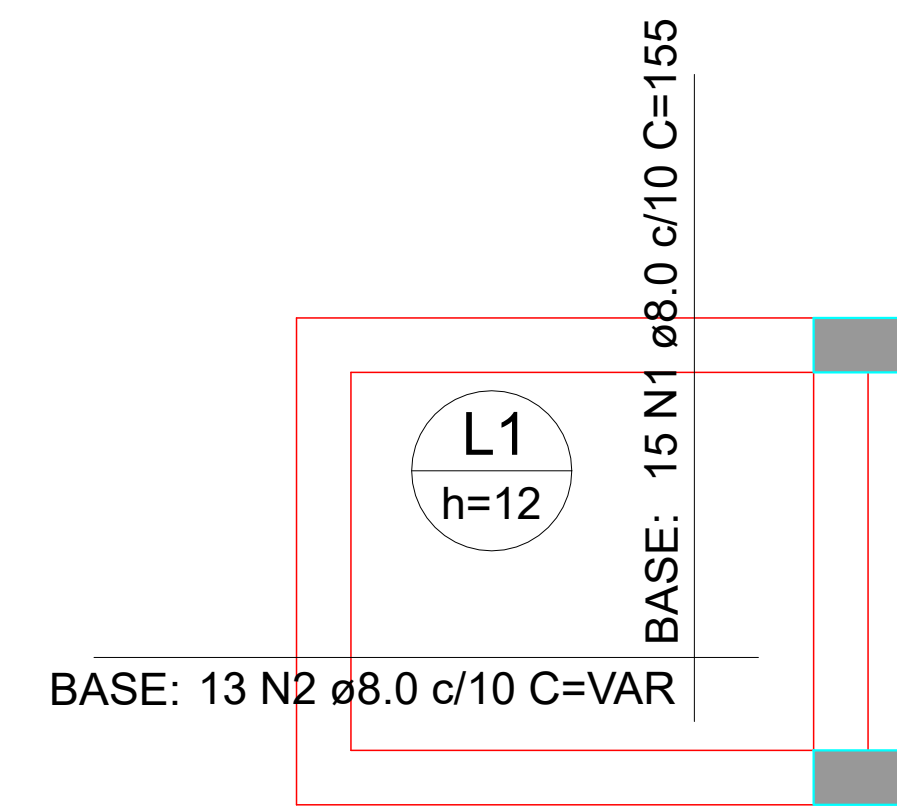
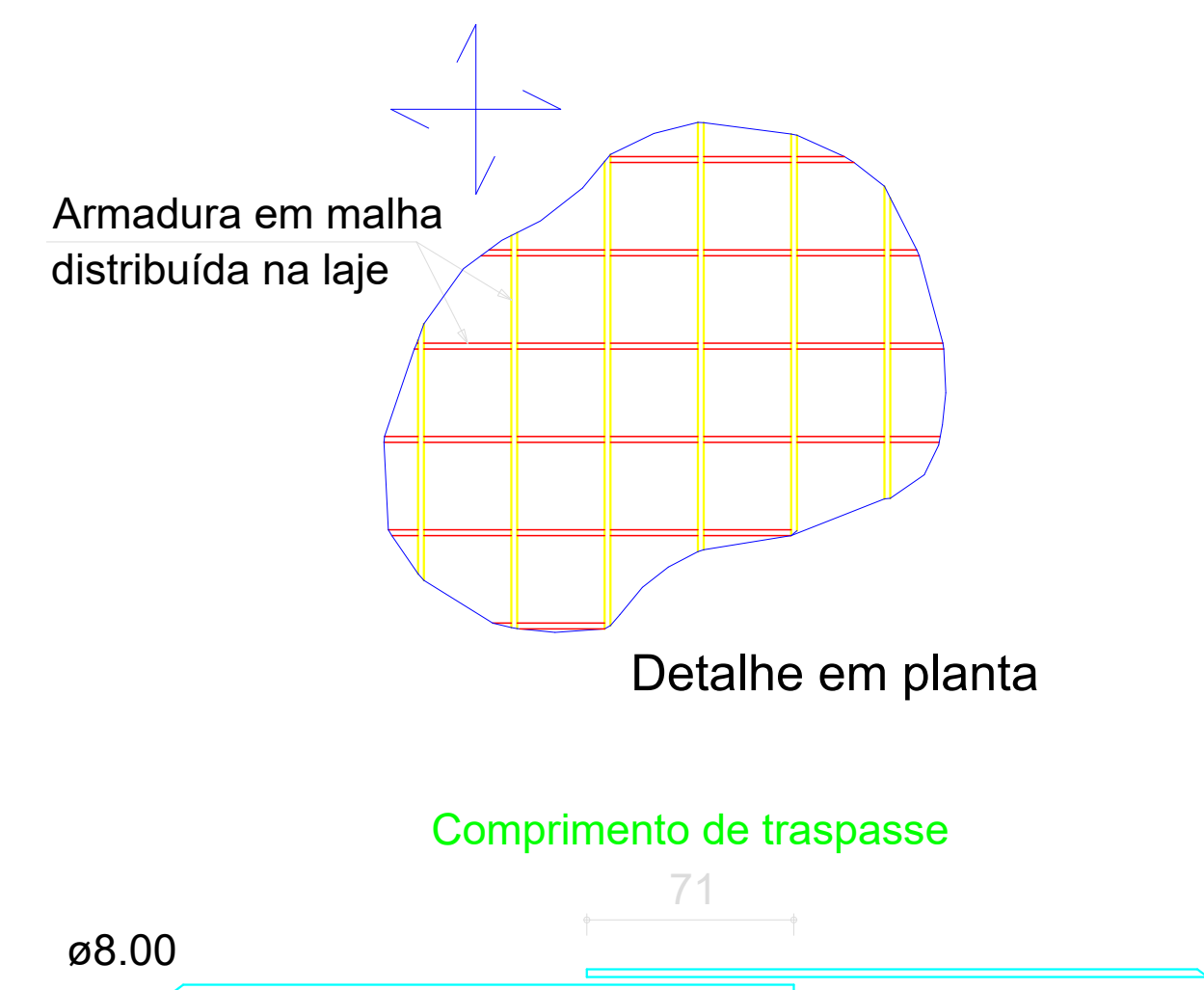
Armação superior do radier do pavimento Nível 2 Muro

escala 1:50

Armação inferior do radier do pavimento Nível 2 Muro

escala 1:50

DETALHE DA ARMADURA DE MALHA BASE



Armação superior do radier do pavimento Nível 3 Muro

escala 1:50

Armação inferior do radier do pavimento Nível 3 Muro

escala 1:50

RELAÇÃO DO AÇO

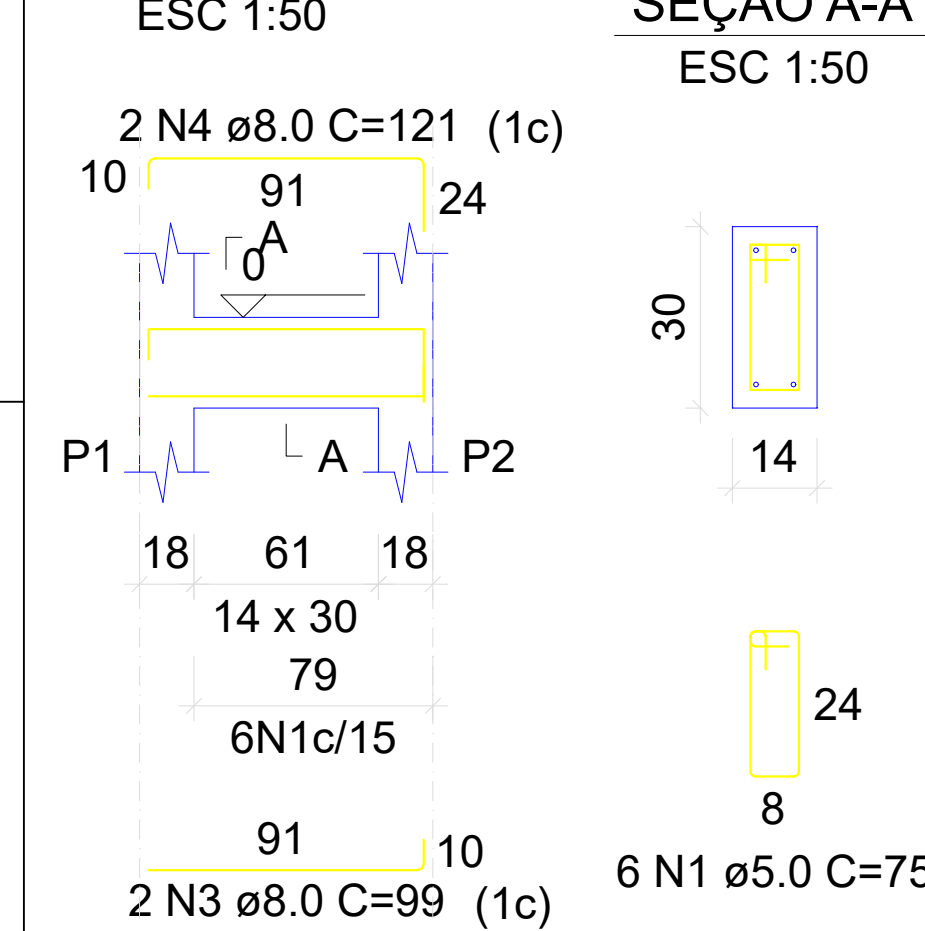
Negativos		Positivos			
AÇO	N	DIAM (mm)	QUANT	C.UNIT (cm)	C.TOTAL (cm)
CA50	1	8.0	14	VAR	VAR
	2	8.0	14	VAR	VAR
	3	8.0	7	156	1092
	4	8.0	7	162	1134

RESUMO DO AÇO

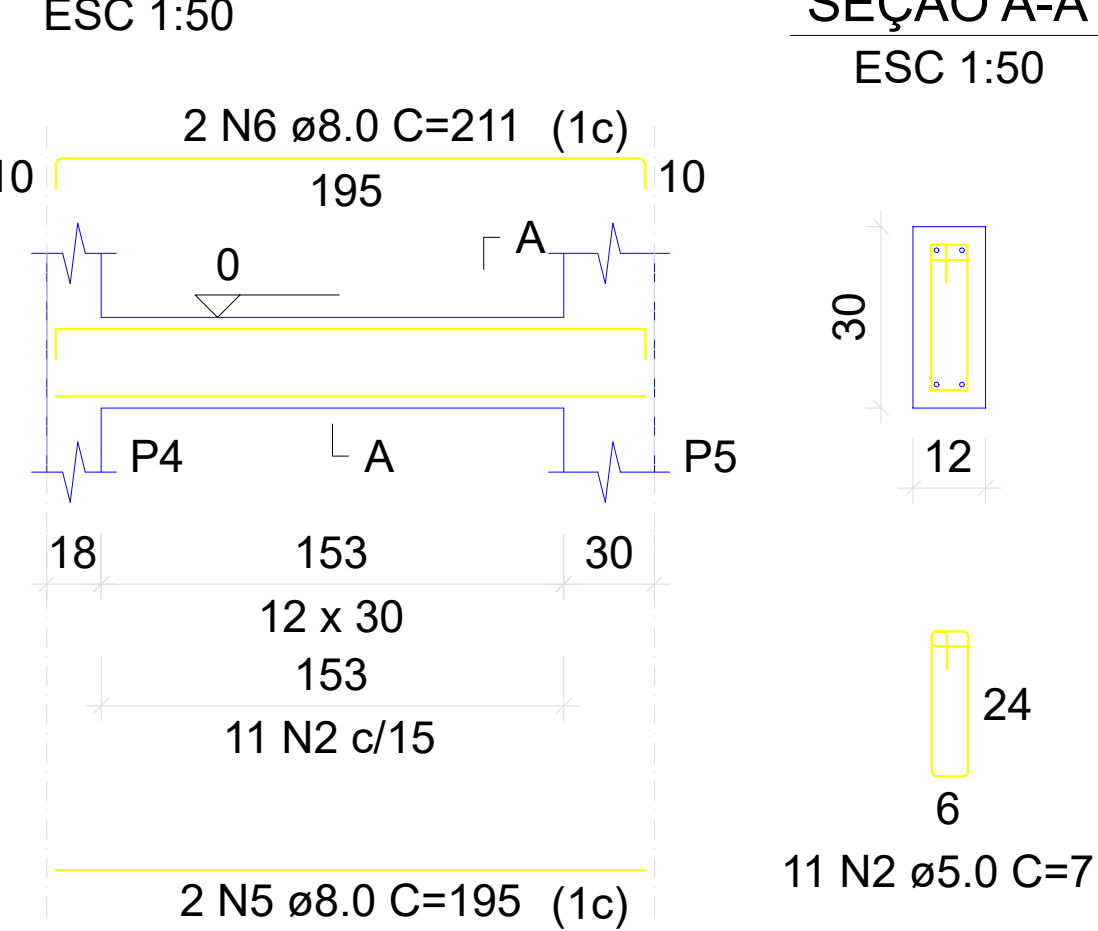
AÇO	DIAM (mm)	C.TOTAL (m)	QUANT + 0% (Barras)	PESO + 0% (kg)
CA50	8.0	66.5	12	26.2
PESO TOTAL (kg)				
CA50				26.2

Volume de concreto (C-25) = 0.22 m³
 Área de forma = 0.00 m²

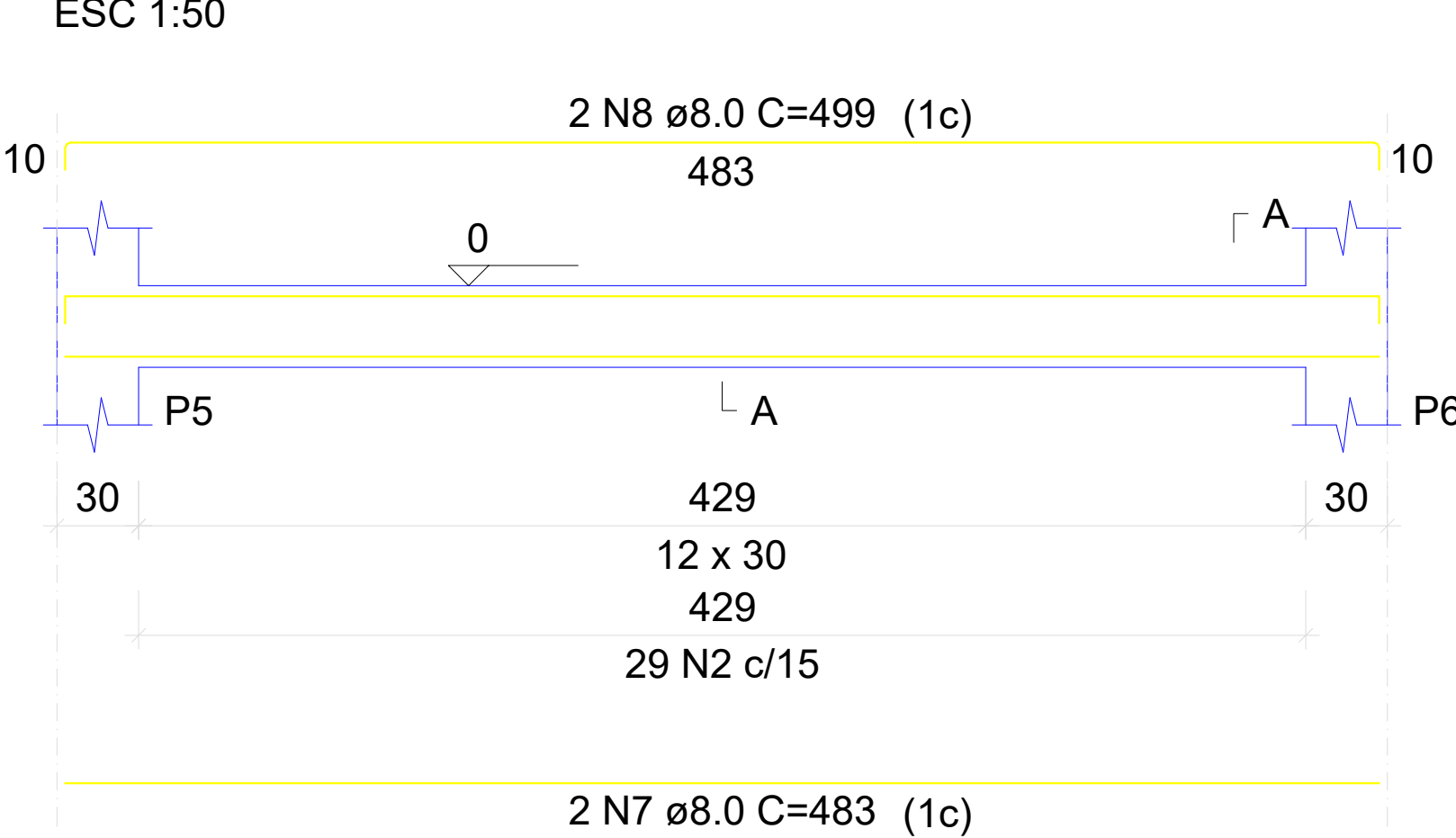
VC100



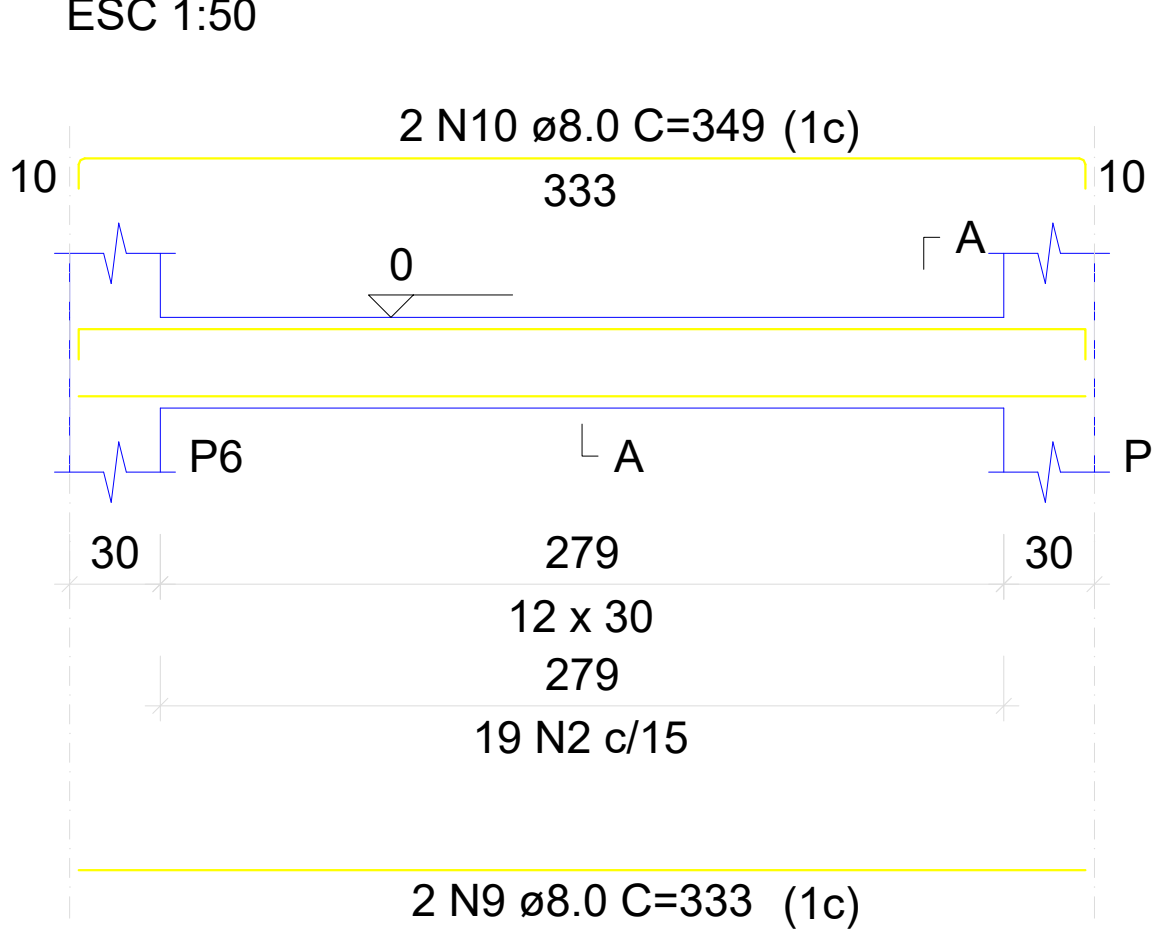
VC101



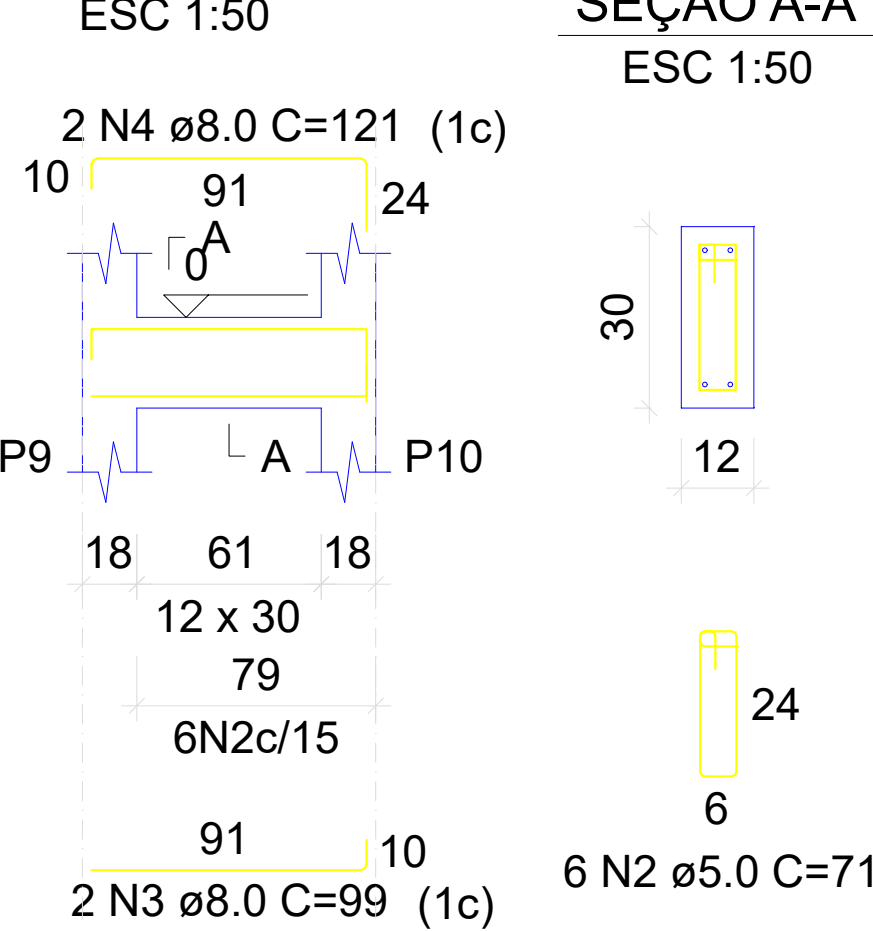
VC112



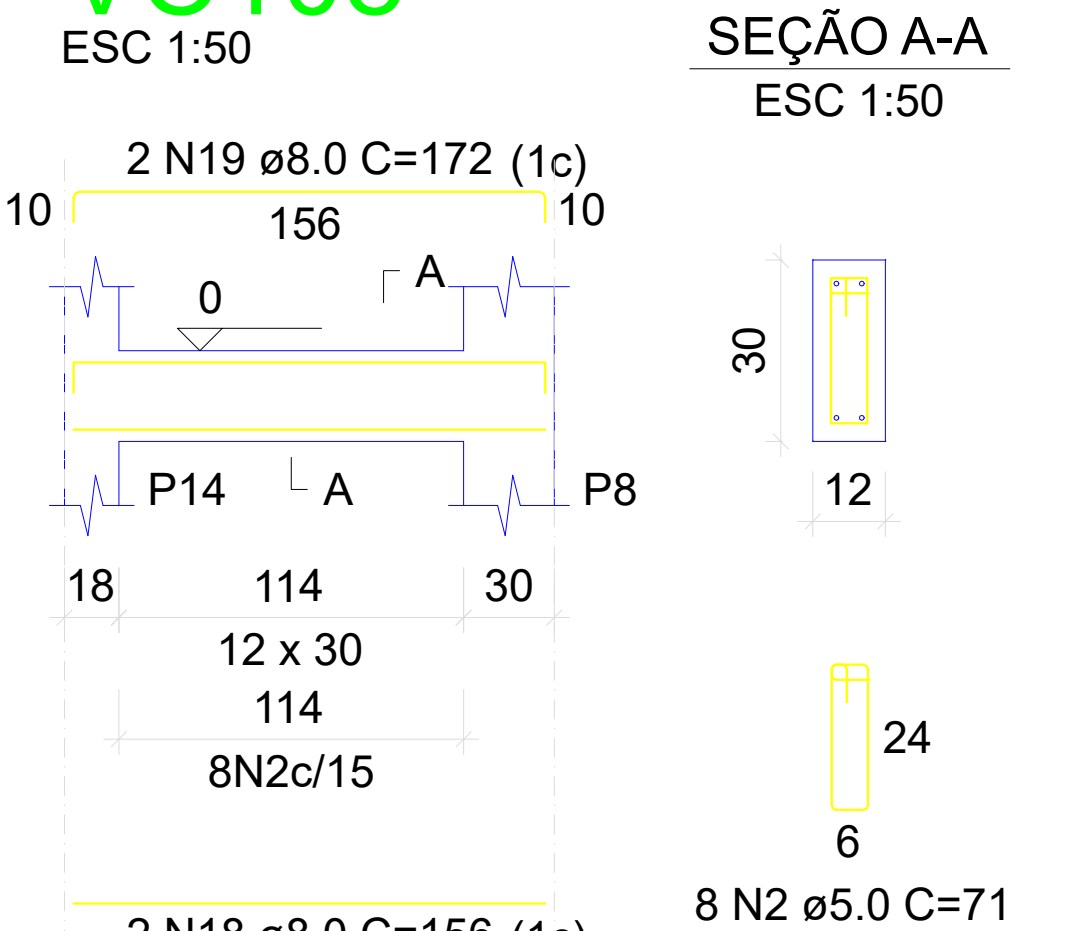
VC103



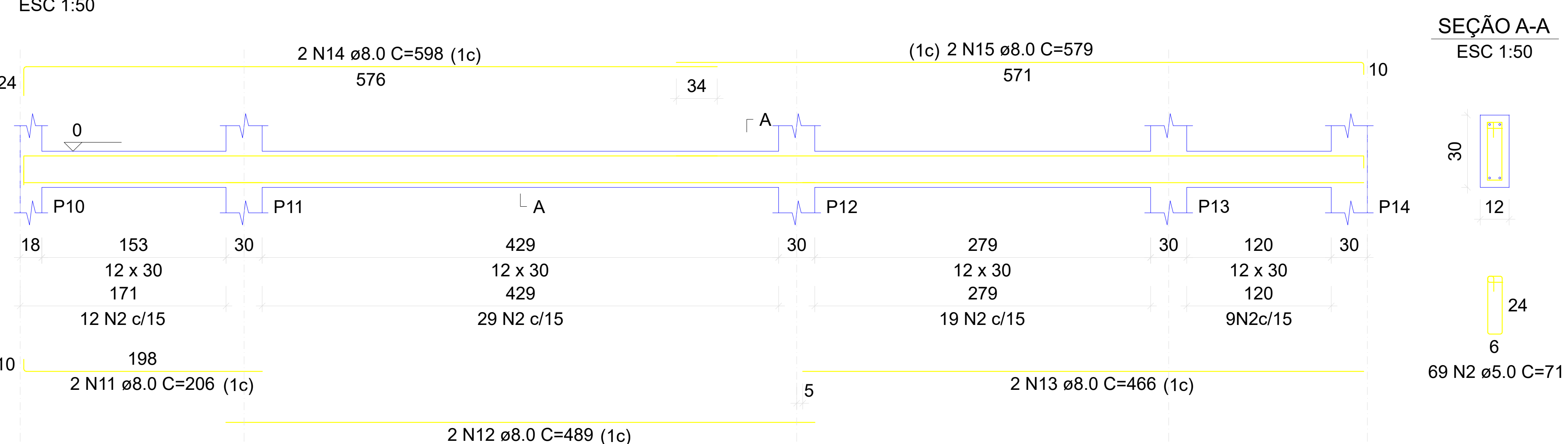
VC104



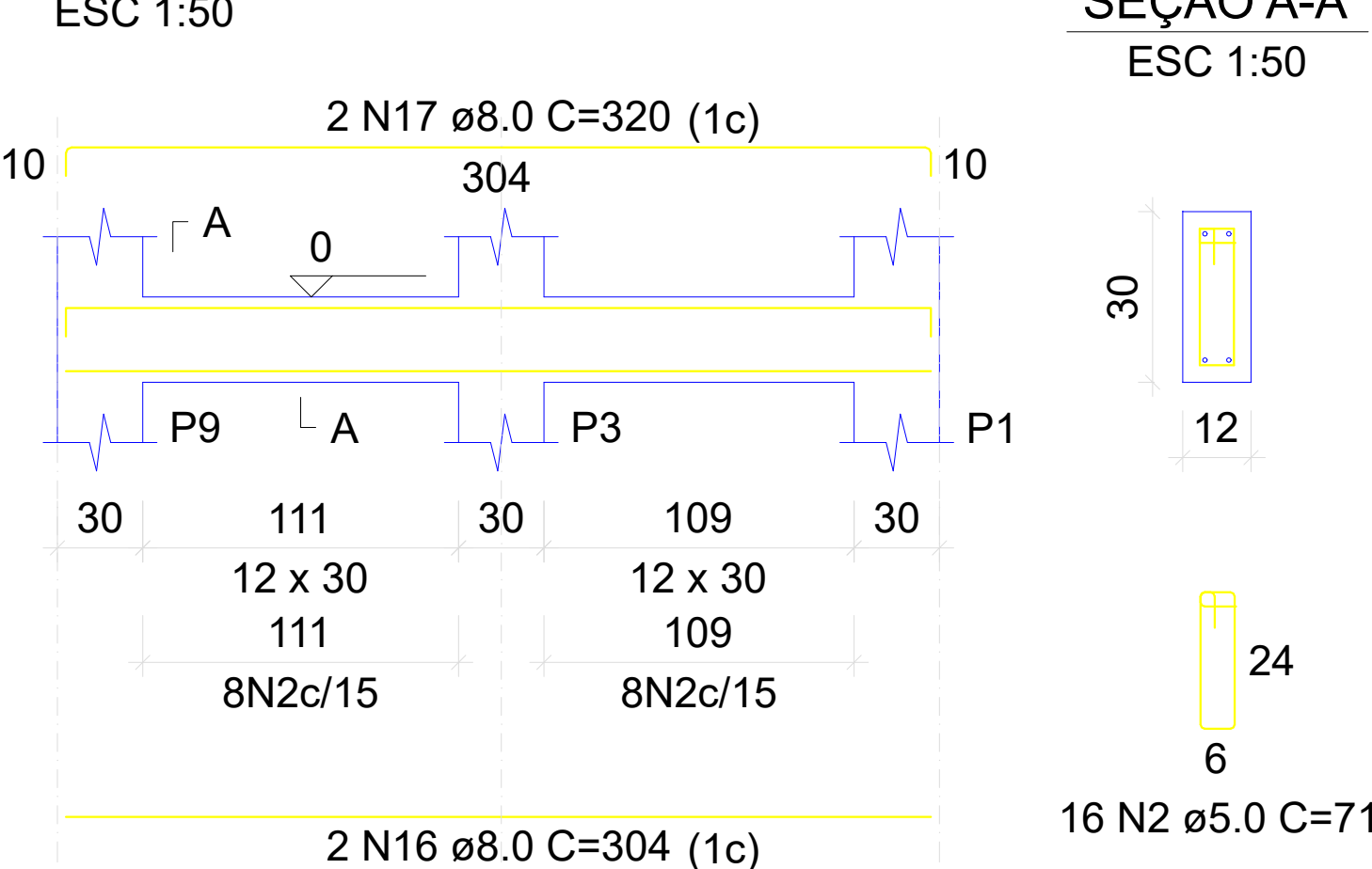
VC108



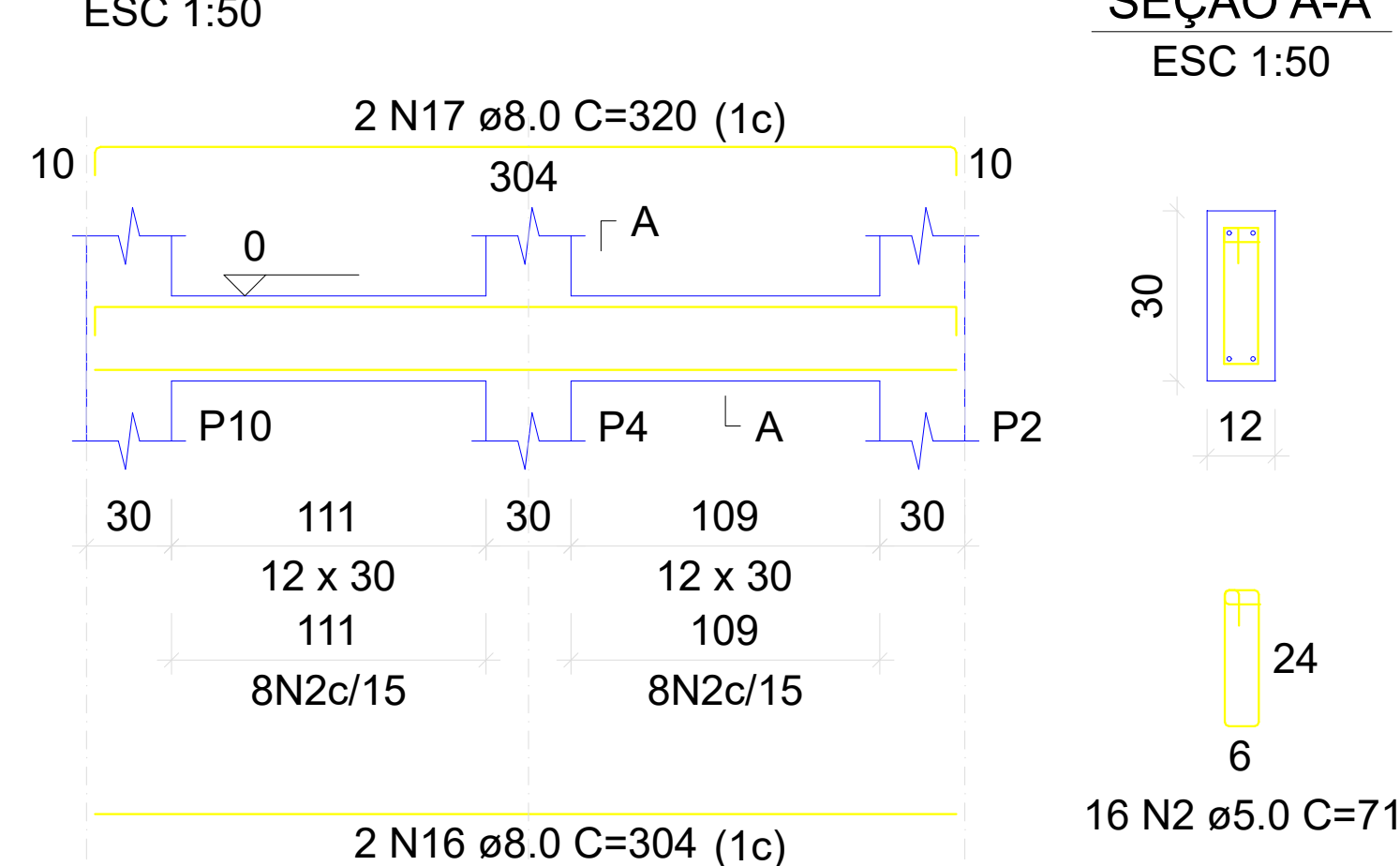
VC105



VC106



VC107



RESUMO DO AÇO

AÇO	DIAM (mm)	C.TOTAL (m)	QUANT + 0% (Barras)	PESO + 0% (kg)
CA50	8.0	66.5	12	26.2

PROJETO ESTRUTURAL

OBRA: CONSTRUÇÃO CAMPO DE FUTEBOL, PLAYGROUND E ATI
 ENDEREÇO: AVENIDA Nilson Vidal Gomes, S/N, LOTE 0116 QUADRA 164, JARDIM SÃO JORGE, MUNICÍPIO DE PARANAVÁI/SP

RESPONSÁVEL TÉCNICO: Eng. Civil Nilson Vidal Nascimento CREA-PR: 186476/D

PROJETO: DETALHAMENTO DE BLOCOS, PILARES, VIGAS, RAMPAS E RADIER

PAVIMENTO: Pav. UNIDADE: Indicada CONJUNTO: X

PROPRIETÁRIO: Prefeitura Municipal de Paranavai Pr FOLHA: 07 / 12

DESENHO: Nilson Vidal DATA: 12/11/2125