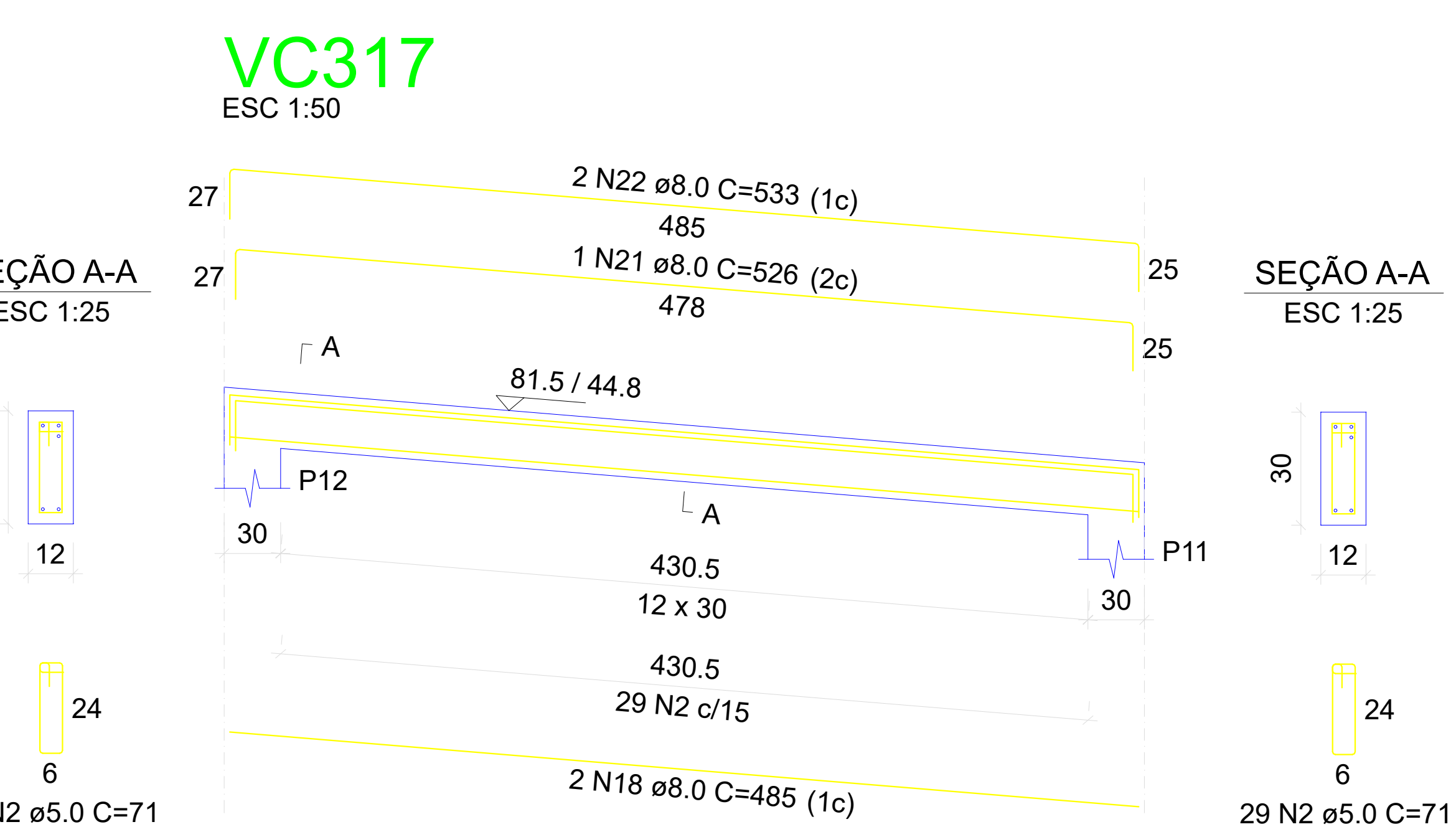
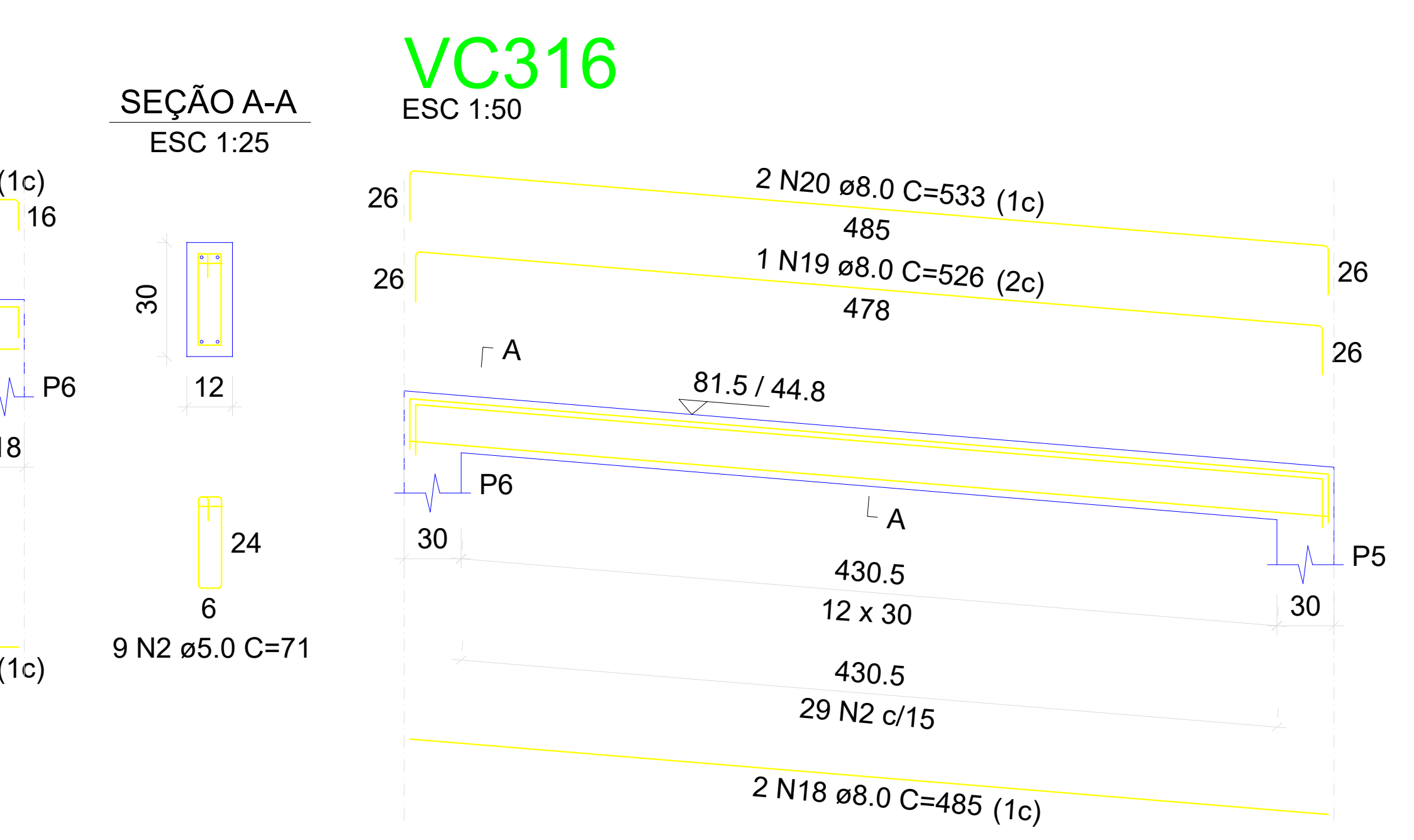
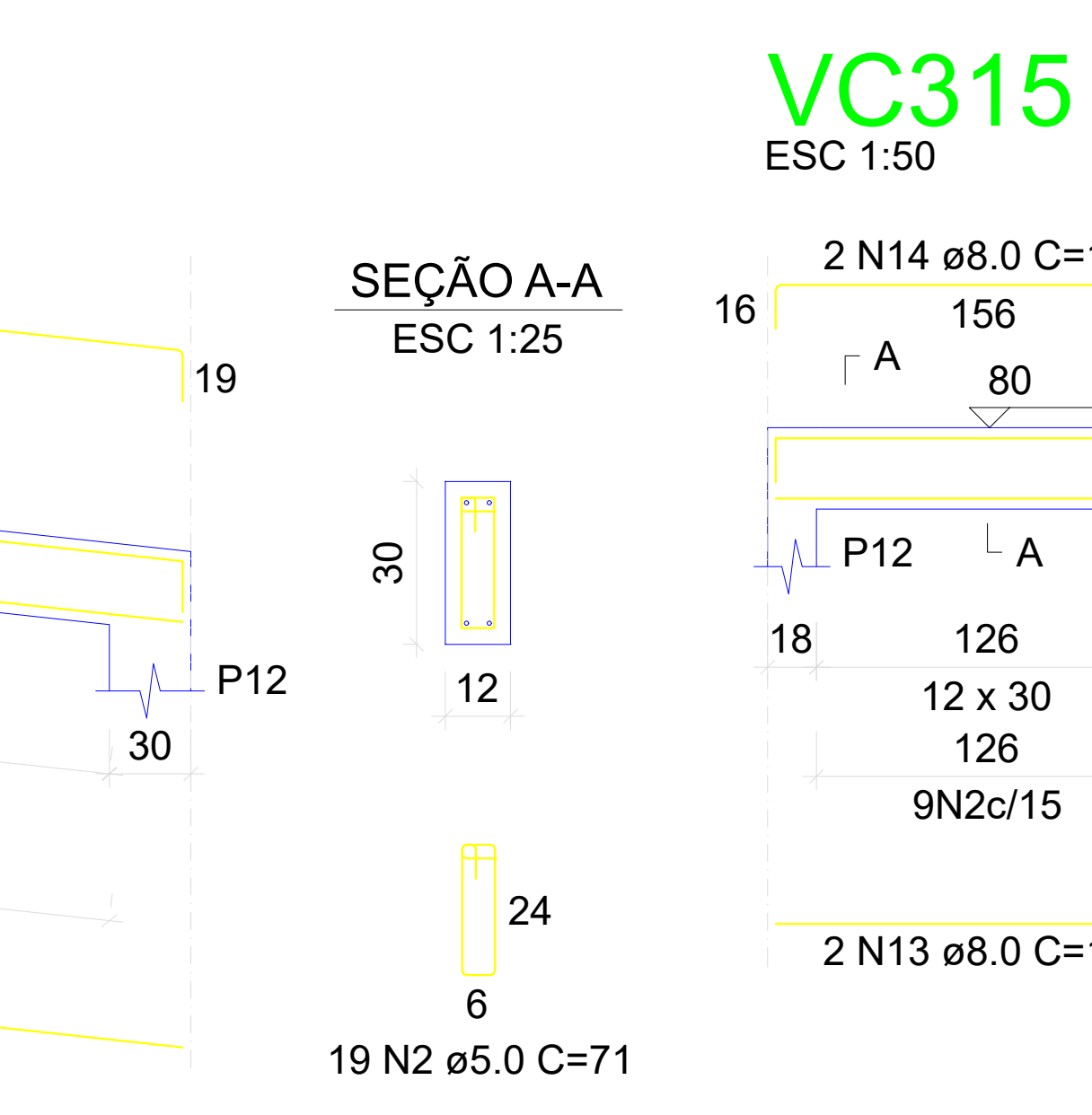
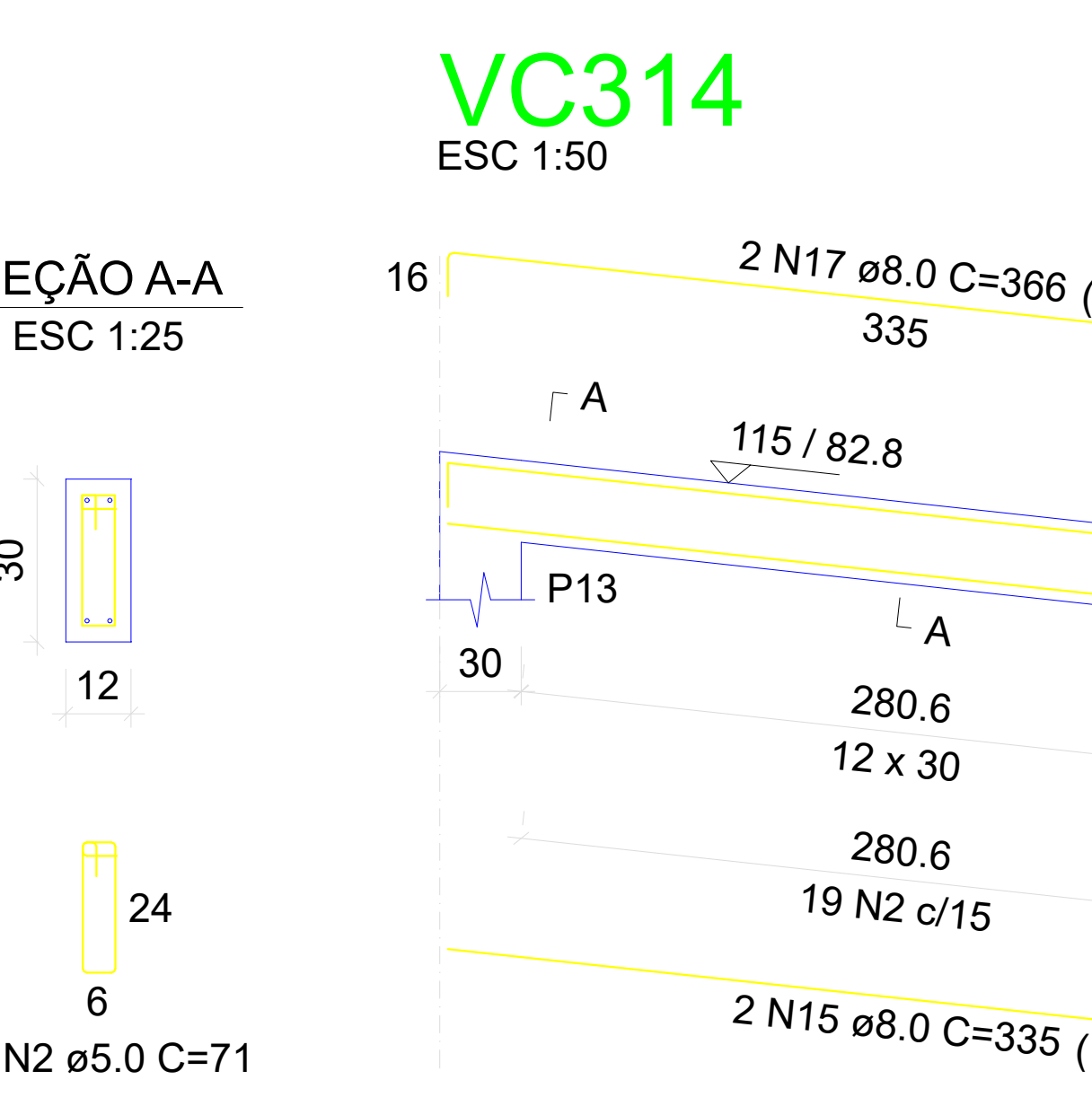
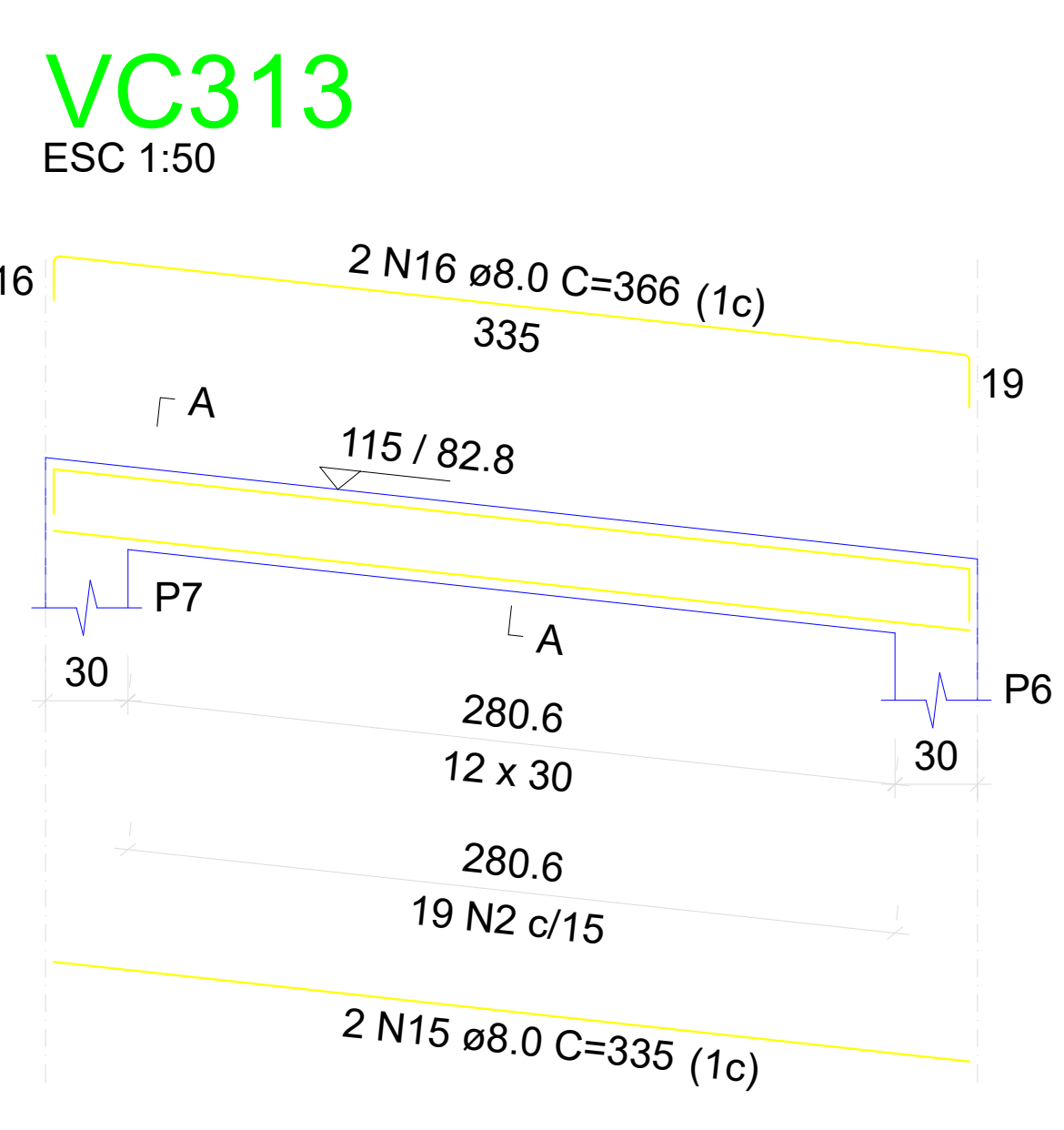
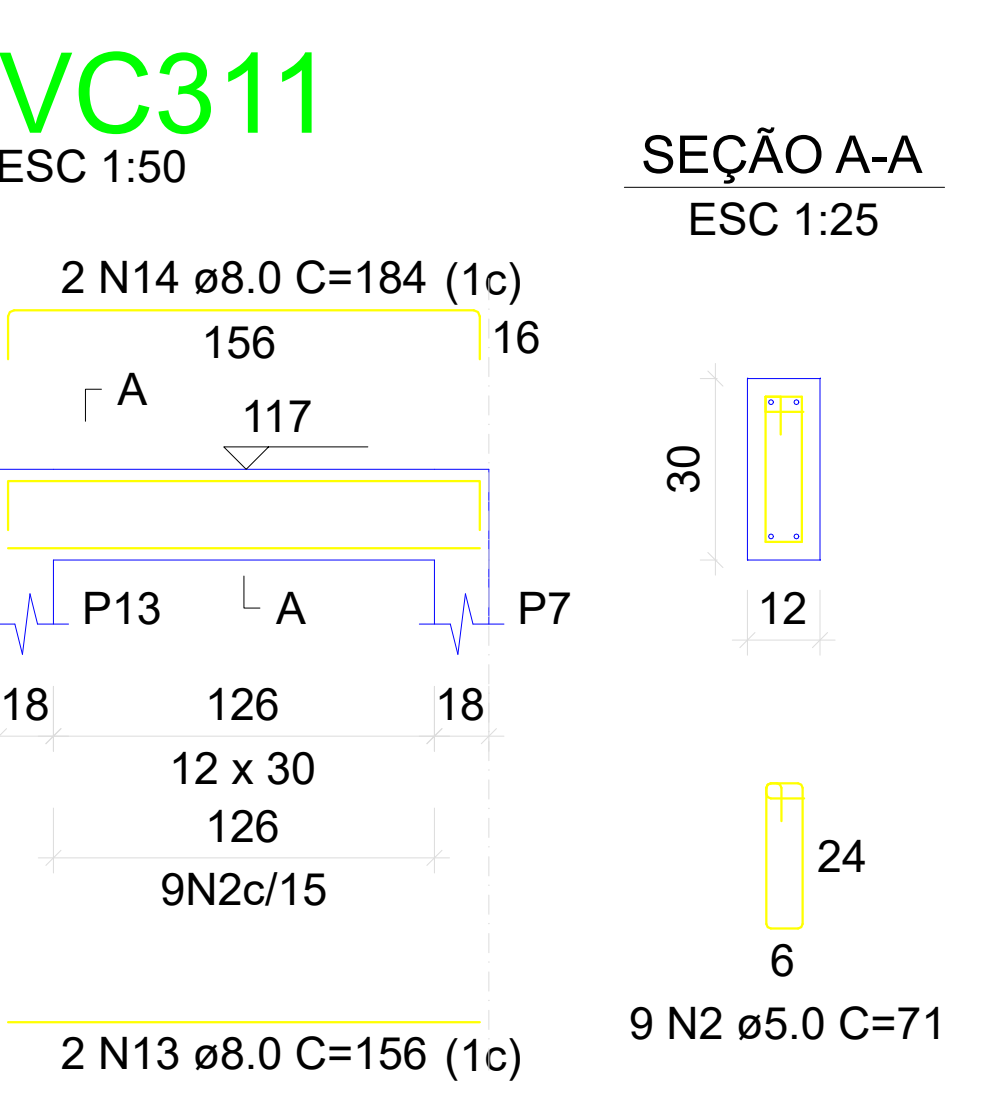
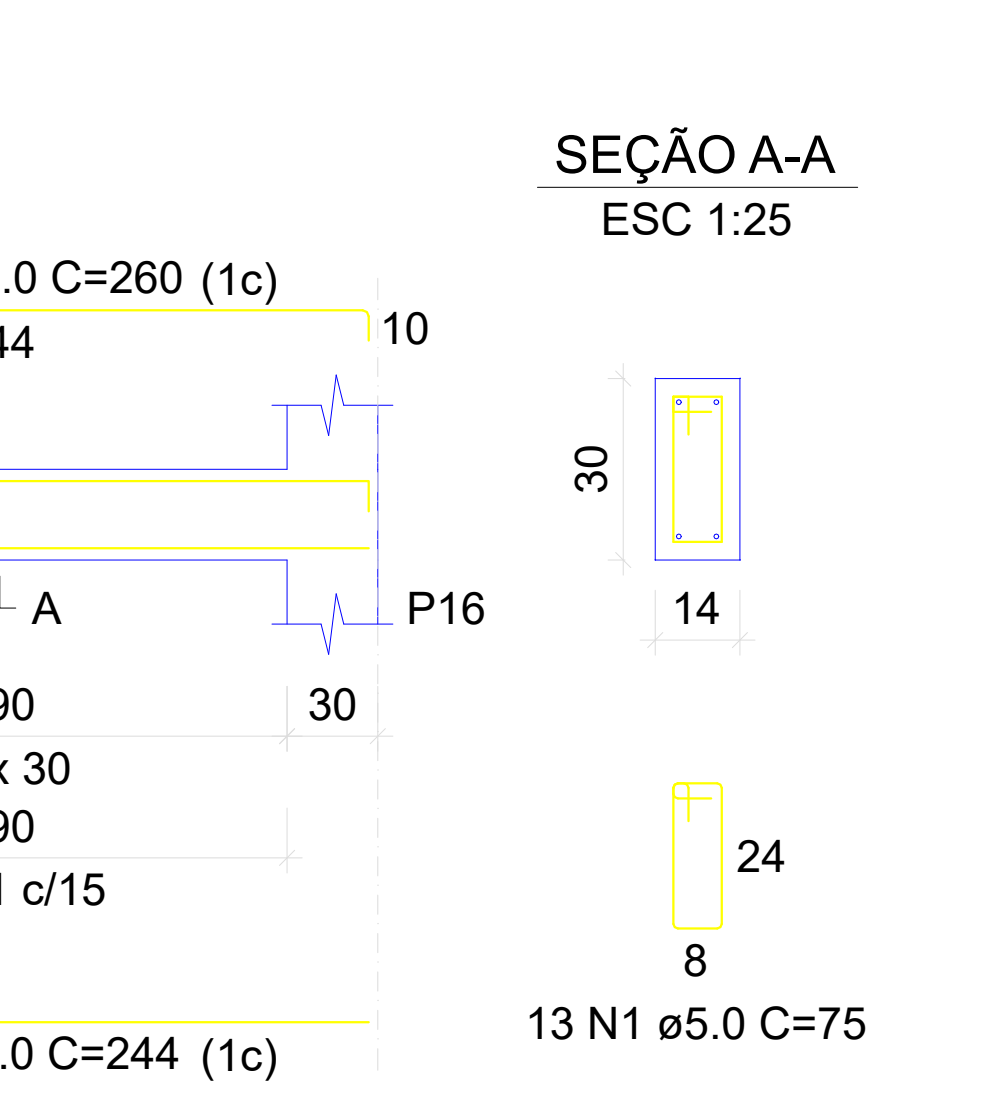
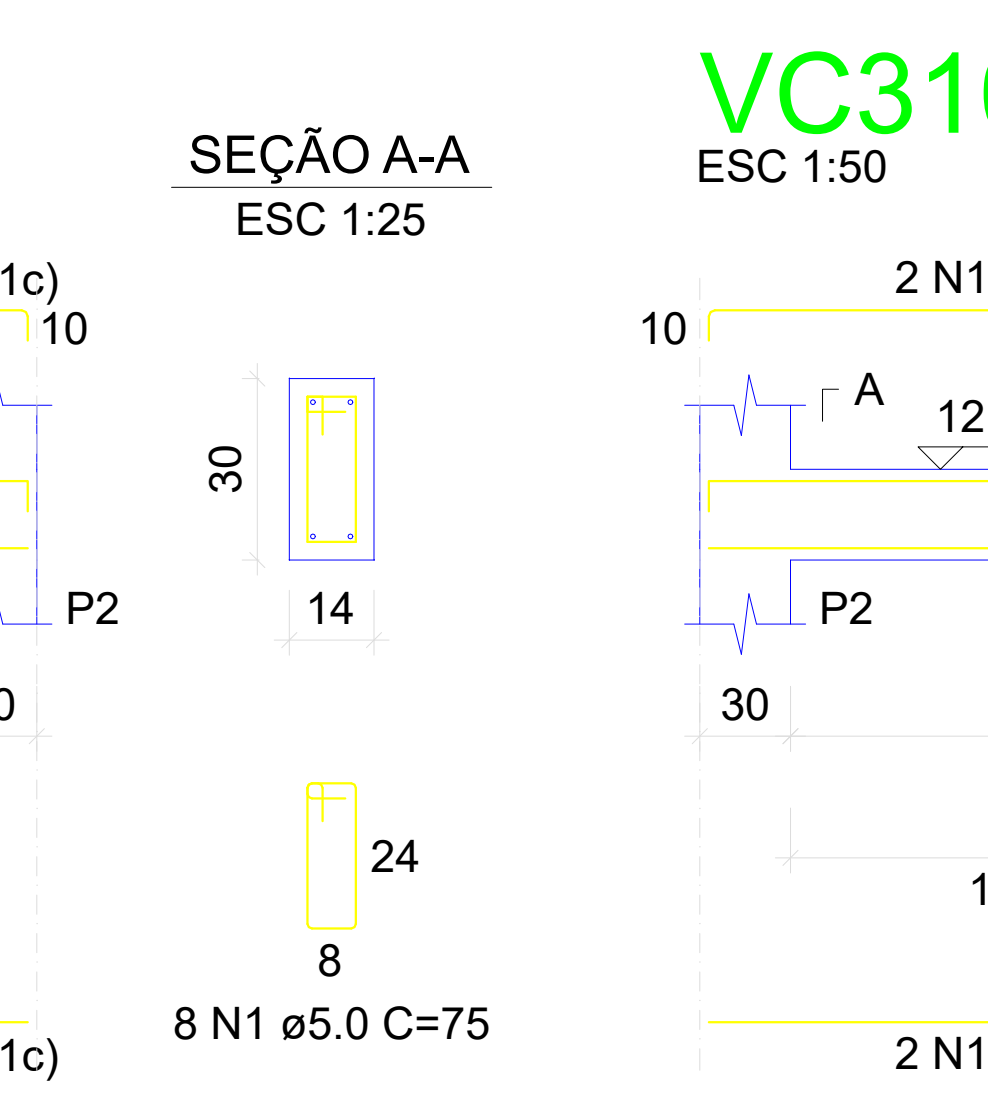
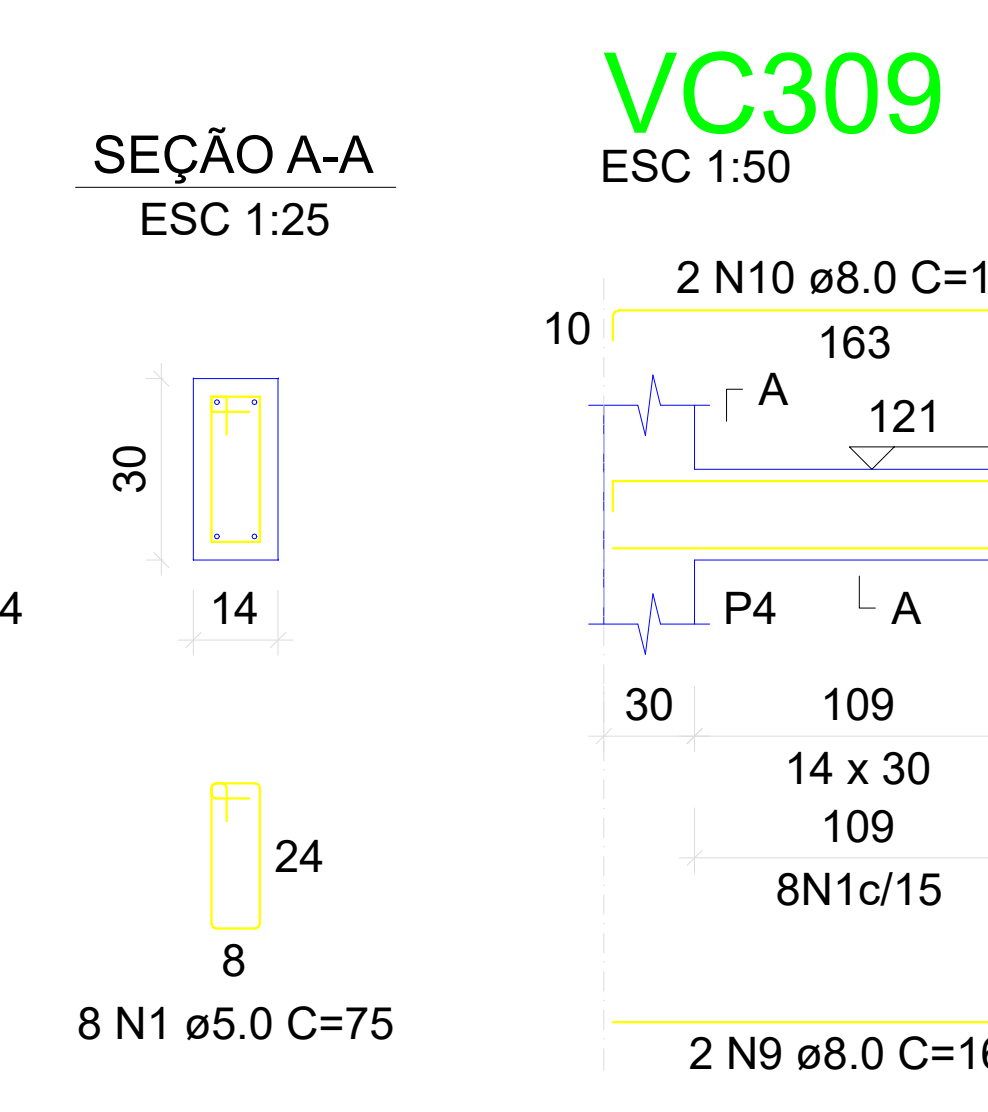
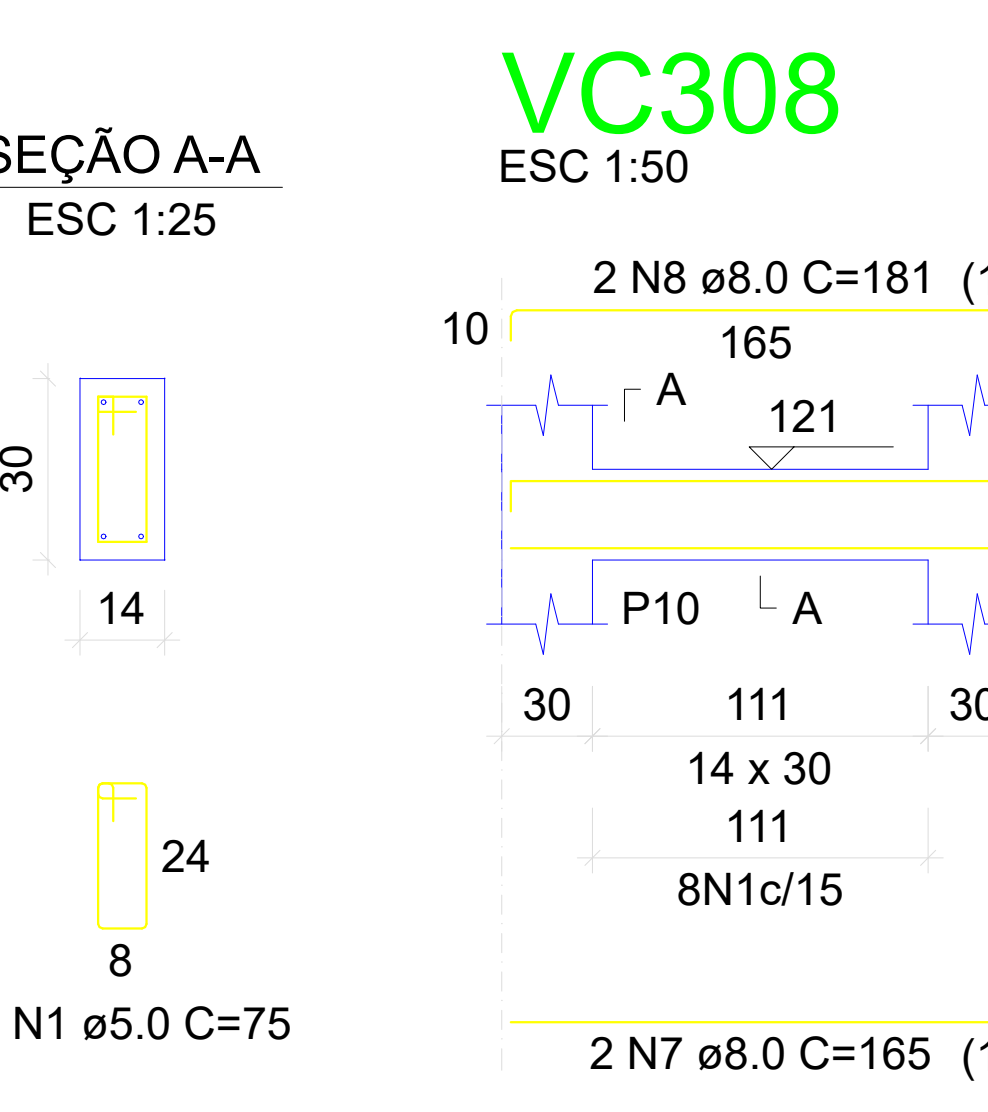
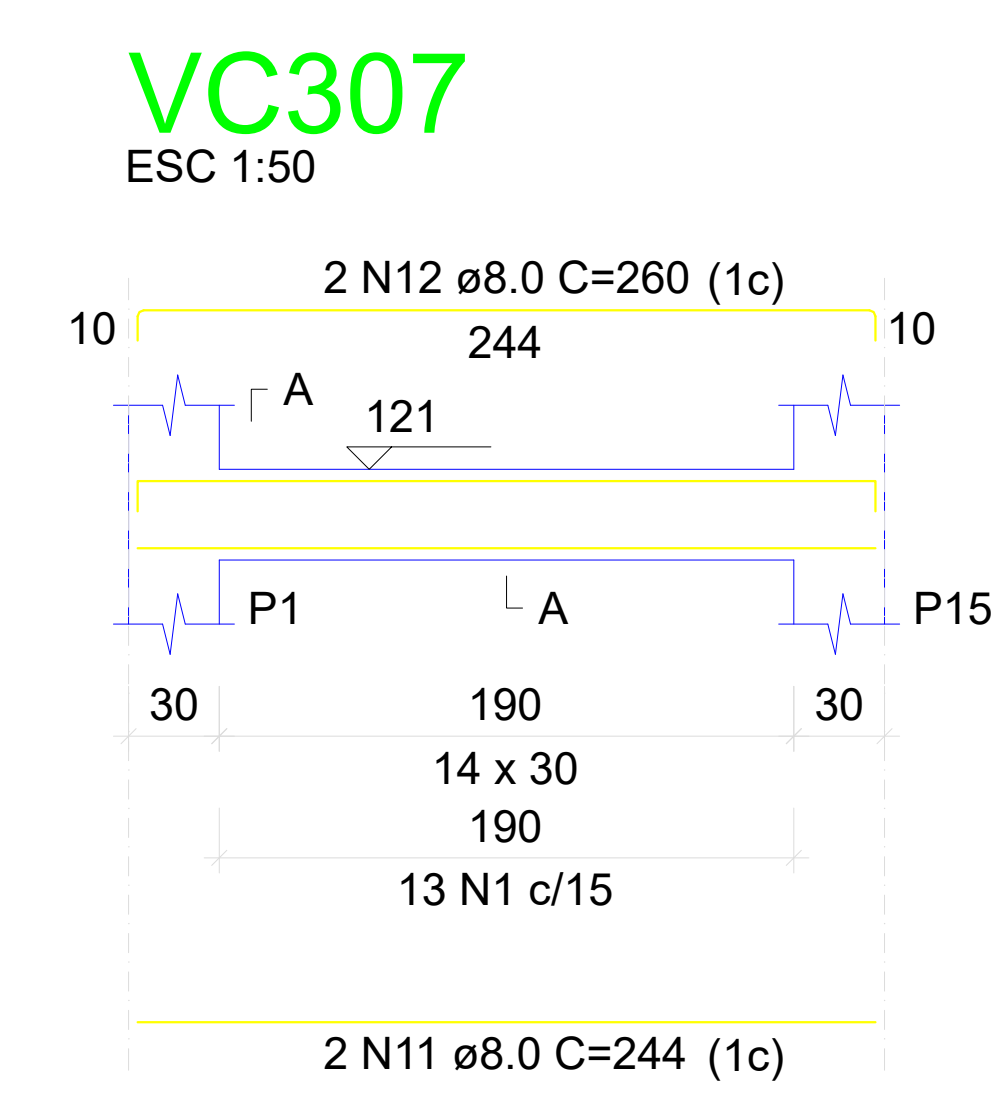
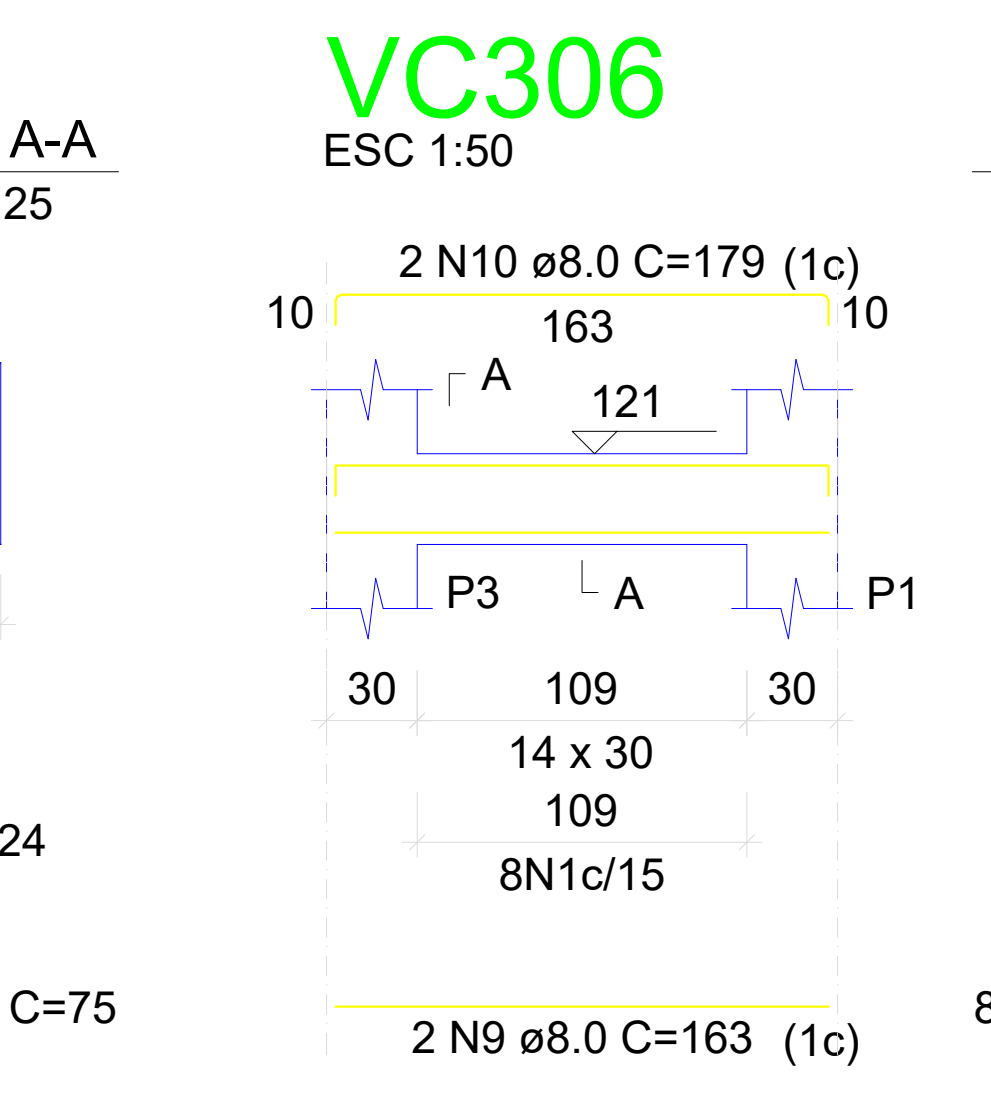
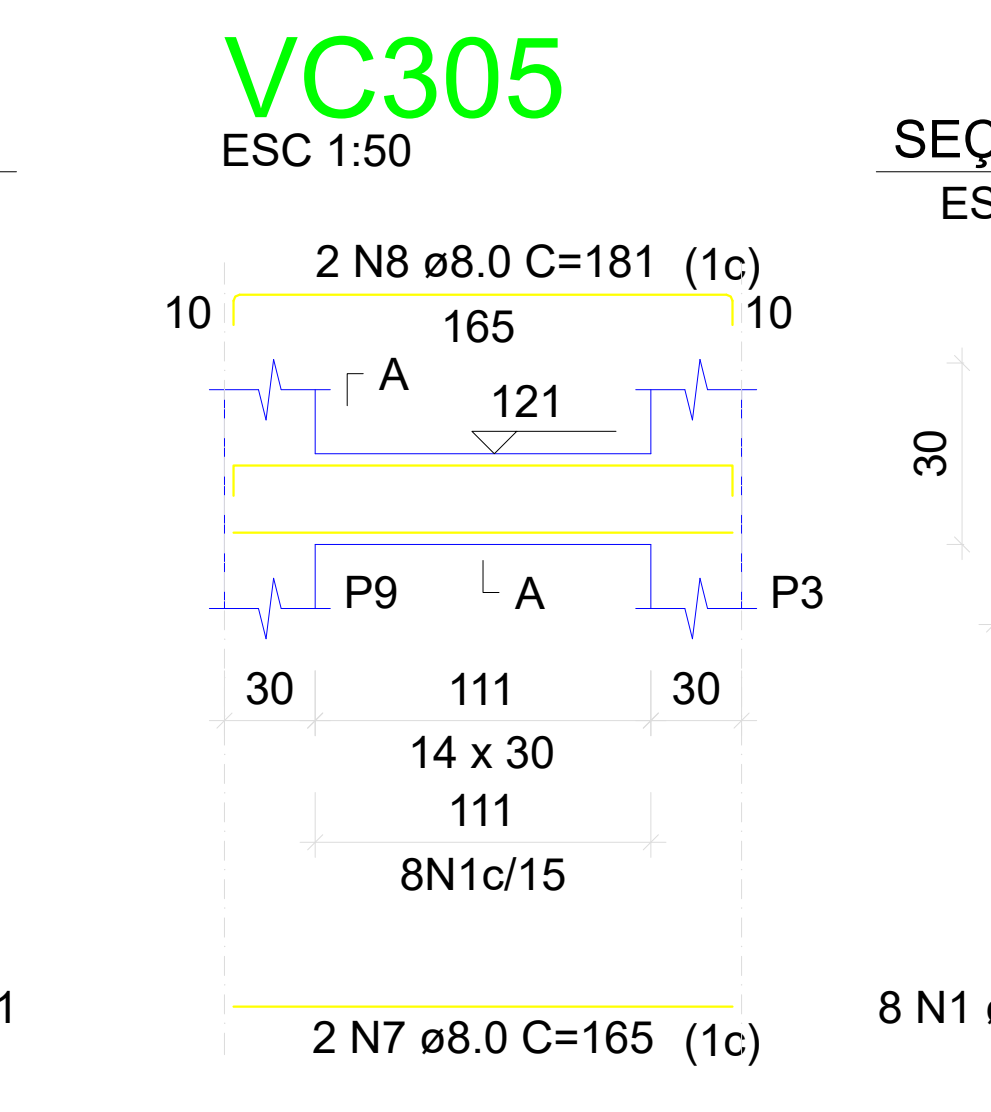
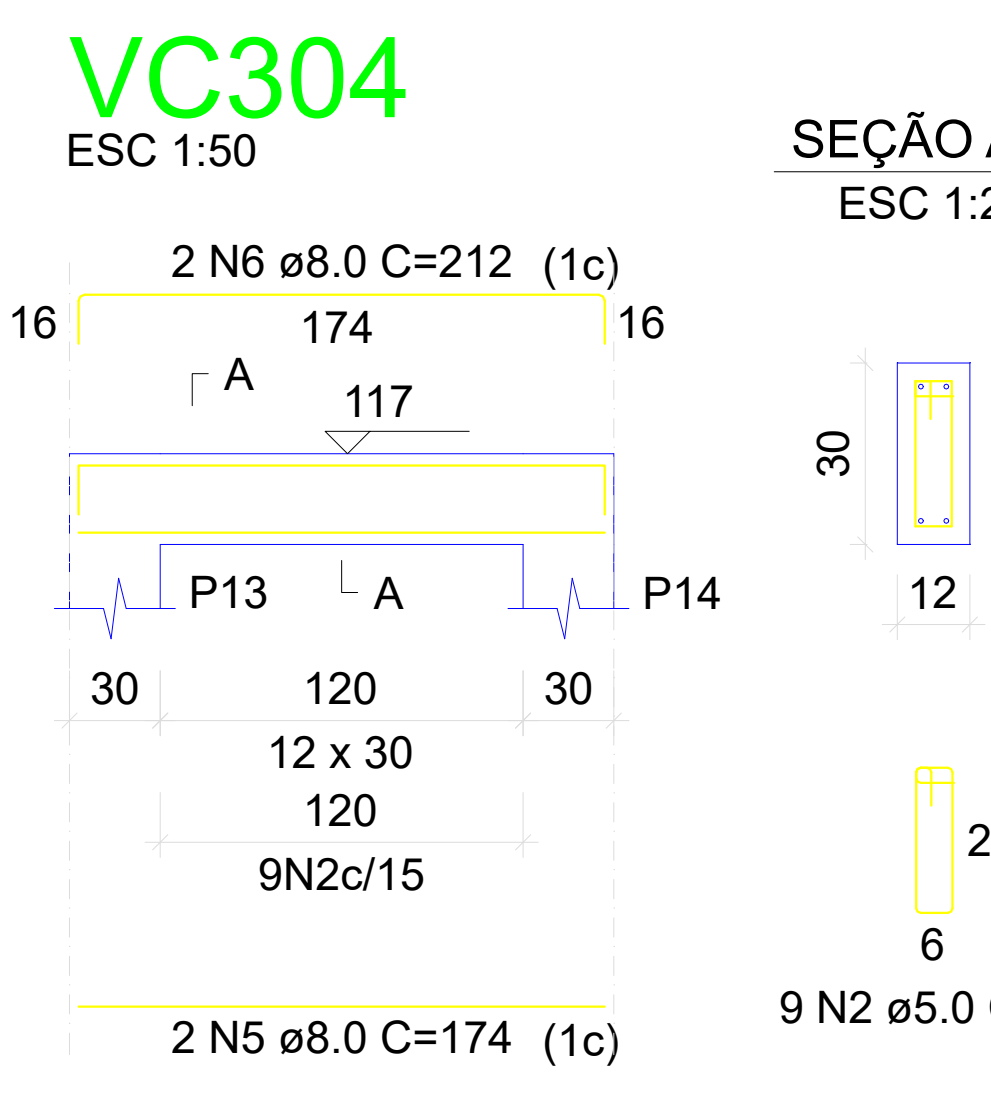
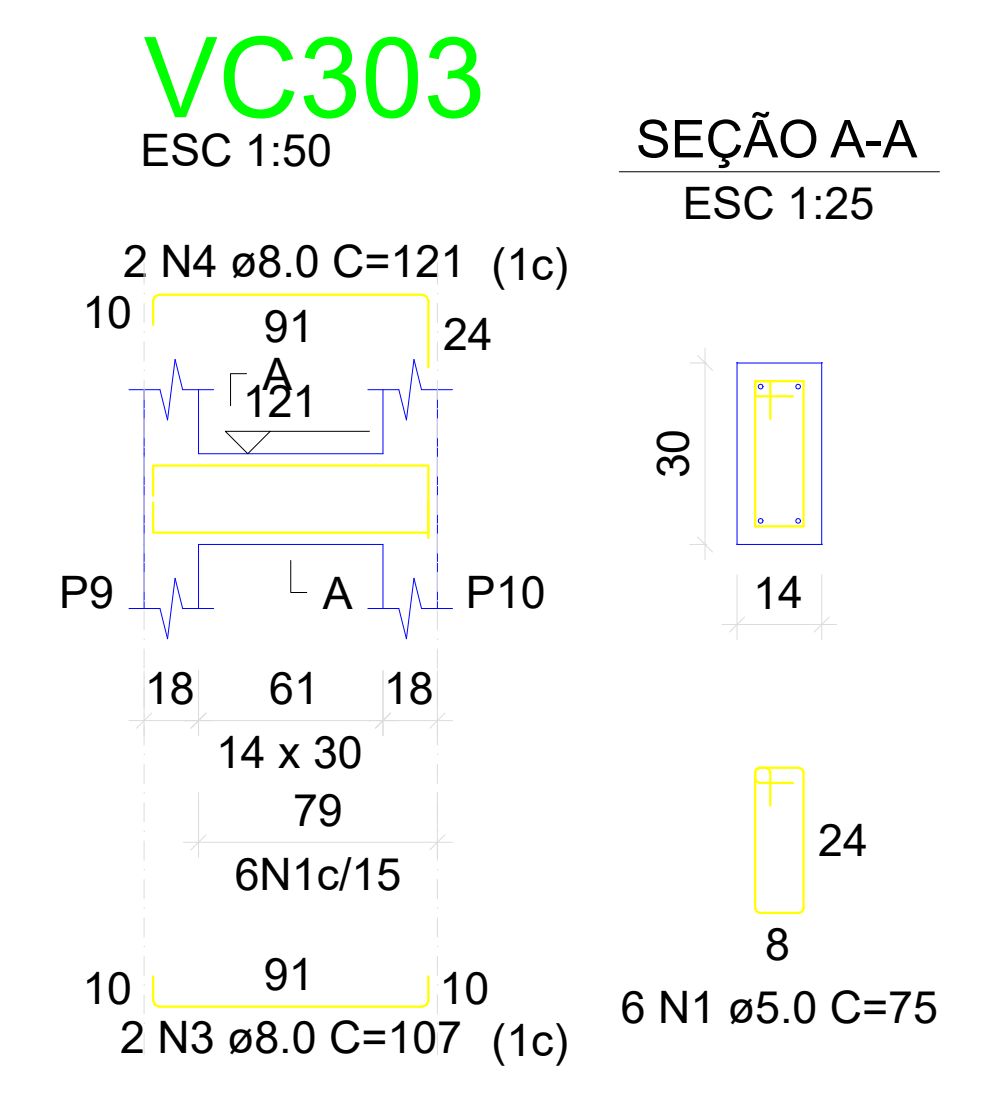
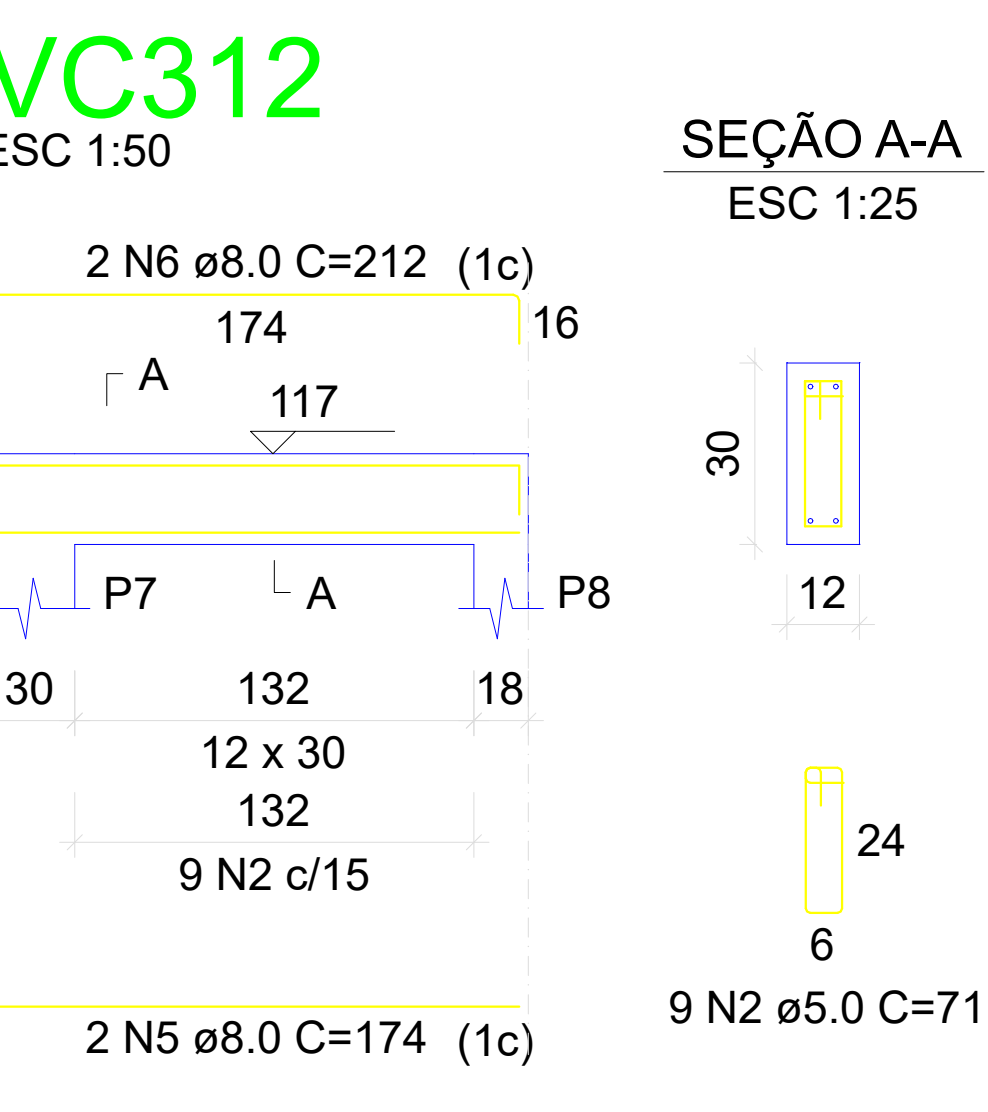
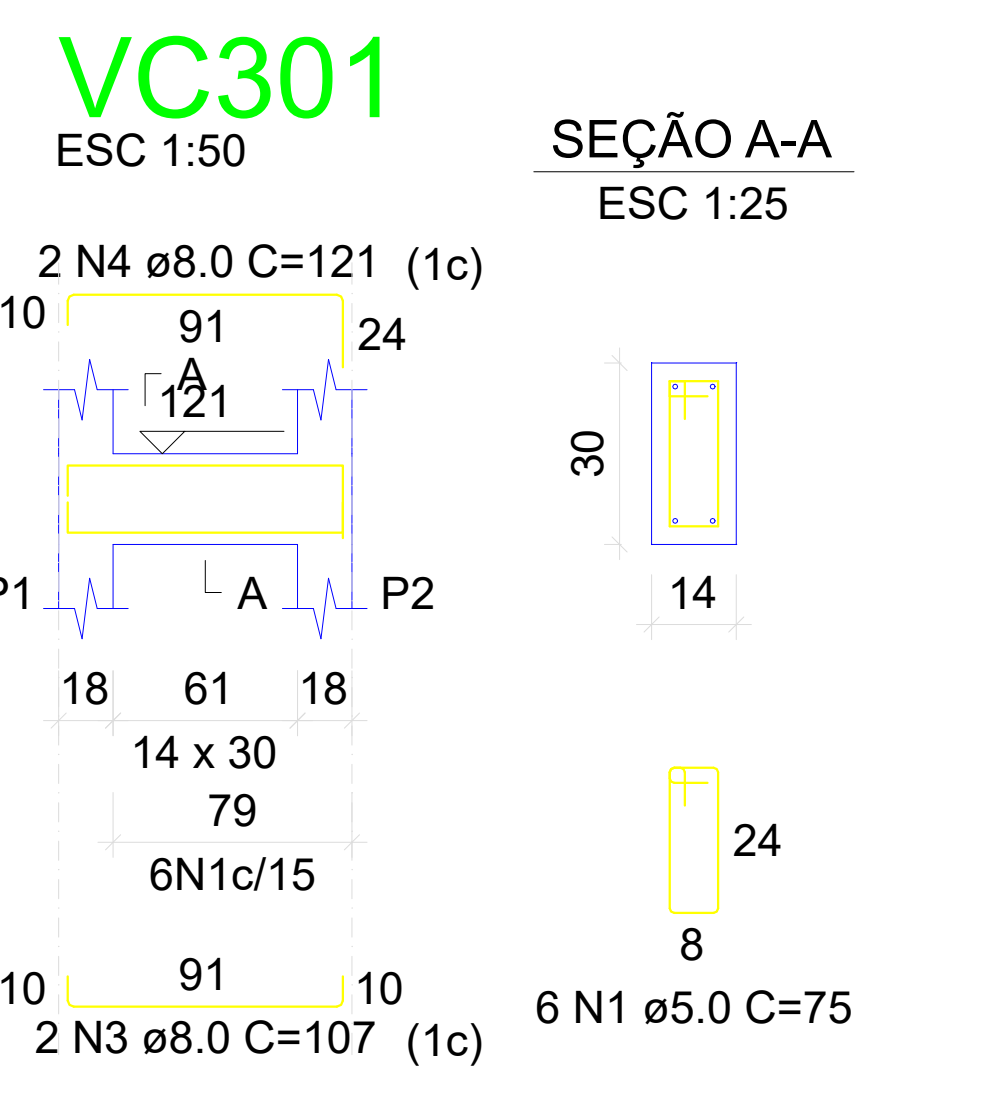
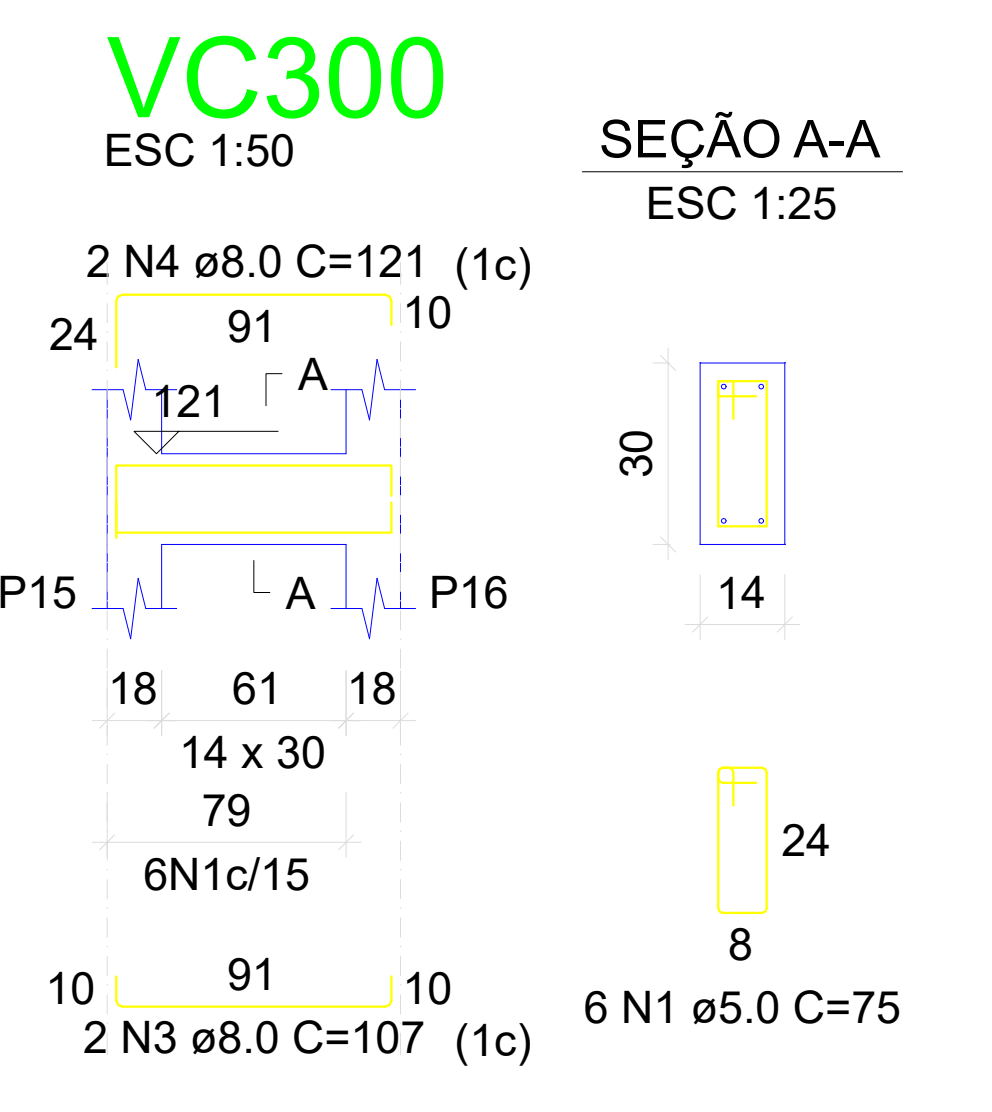


| AÇO | N | DIAM (mm) | QUANT | C.UNIT (cm) | C.TOTAL (cm) |
|------|---|-----------|-------|-------------|--------------|
| CA60 | 1 | 5.0 | 41 | 71 | 2911 |
| CA50 | 2 | 8.0 | 2 | 203 | 406 |
| | 3 | 8.0 | 2 | 231 | 462 |
| | 4 | 8.0 | 2 | 195 | 390 |
| | 5 | 8.0 | 2 | 217 | 434 |
| | 6 | 8.0 | 2 | 165 | 330 |
| | 7 | 8.0 | 2 | 181 | 362 |
| | 8 | 8.0 | 2 | 164 | 328 |
| | 9 | 8.0 | 2 | 192 | 384 |

RESUMO DO AÇO

| AÇO | DIAM (mm) | C.TOTAL (m) | QUANT + 0% (Barras) | PESO + 0% (kg) |
|------------------------|-----------|-------------|---------------------|----------------|
| CA50 | 8.0 | 31 | 6 | 12.2 |
| CA60 | 5.0 | 29.1 | - | 4.5 |
| PESO TOTAL (kg) | | | | |
| CA50 | 12.2 | | | |
| CA60 | 4.5 | | | |

Volume de concreto (C-25) = 0.20 m³
Área de forma = 3.41 m²



RESUMO DO AÇO

| AÇO | DIAM (mm) | C.TOTAL (m) | QUANT + 0% (Barras) | PESO + 0% (kg) |
|------------------------|-----------|-------------|---------------------|----------------|
| CA50 | 8.0 | 176.1 | 30 | 69.5 |
| CA60 | 5.0 | 156.4 | - | 24.1 |
| PESO TOTAL (kg) | | | | |
| CA50 | 69.5 | | | |
| CA60 | 24.1 | | | |

Volume de concreto (C-25) = 1.16 m³
Área de forma = 20.42 m²

| AÇO | N | DIAM (mm) | QUANT | C.UNIT (cm) | C.TOTAL (cm) |
|------|----|-----------|-------|-------------|--------------|
| CA60 | 1 | 5.0 | 76 | 75 | 5700 |
| CA50 | 2 | 5.0 | 140 | 71 | 9940 |
| | 3 | 8.0 | 6 | 107 | 642 |
| | 4 | 8.0 | 6 | 121 | 726 |
| | 5 | 8.0 | 4 | 174 | 696 |
| | 6 | 8.0 | 4 | 212 | 848 |
| | 7 | 8.0 | 4 | 165 | 660 |
| | 8 | 8.0 | 4 | 161 | 724 |
| | 9 | 8.0 | 4 | 163 | 652 |
| | 10 | 8.0 | 4 | 179 | 716 |
| | 11 | 8.0 | 4 | 244 | 976 |
| | 12 | 8.0 | 4 | 260 | 1040 |
| | 13 | 8.0 | 6 | 156 | 936 |
| | 14 | 8.0 | 9 | 164 | 1476 |
| | 15 | 8.0 | 4 | 355 | 1420 |
| | 16 | 8.0 | 2 | 360 | 732 |
| | 17 | 8.0 | 2 | 466 | 932 |
| | 18 | 8.0 | 1 | 526 | 526 |
| | 19 | 8.0 | 2 | 533 | 1066 |
| | 20 | 8.0 | 2 | 533 | 1066 |
| | 21 | 8.0 | 2 | 533 | 1066 |
| | 22 | 8.0 | 2 | 533 | 1066 |

RELAÇÃO DO AÇO

| | | |
|-------|-------|-------|
| VC300 | VC301 | VC312 |
| VC303 | VC304 | VC305 |
| VC306 | VC307 | VC308 |
| VC309 | VC310 | VC311 |
| VC312 | VC313 | VC314 |
| VC315 | VC316 | VC317 |

PROJETO ESTRUTURAL

OBRA: CONSTRUÇÃO CAMPO DE FUTEBOL, PLAYGROUND E ATÍ
ENDEREÇO: AVENIDA NIKSON VIDAL NASCIMENTO, S/N, LOTE 0116 QUADRA 164, JARDIM SÃO JORGE, MUNICÍPIO DE PARANAÍVA/PR

RESPONSÁVEL TÉCNICO: Eng. Civil Nikson Vidal Nascimento CREA-PR: 186476/D

PROPOSTA: DETALHAMENTO DE BLOCOS, PILARES, VIGAS, RAMPAS E RADIER

INVENIMENTO: PAV. UNIDADE: Indicada CONJUNTO: X

PROPRIETÁRIO: Prefeitura Municipal de Paranavai/PR

DESENHO: Nikson Vidal DATA: 12/11/2025 FOLHA: 08 / 12