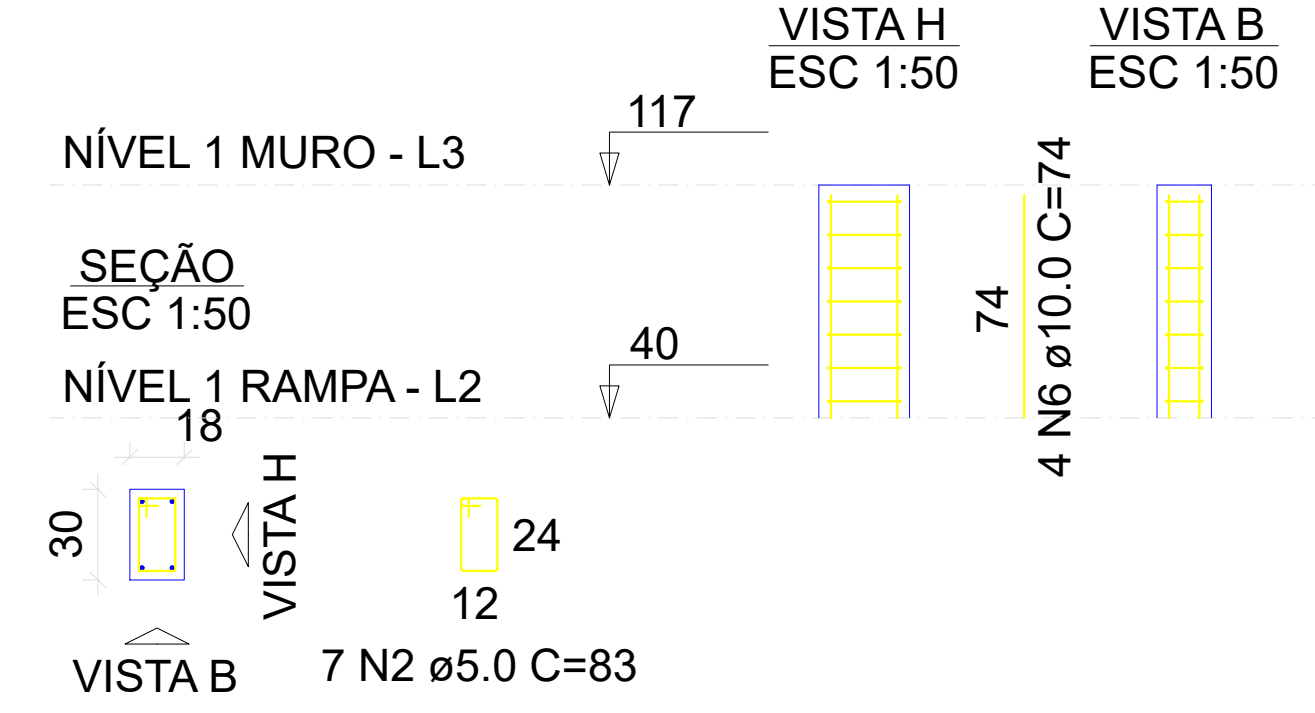
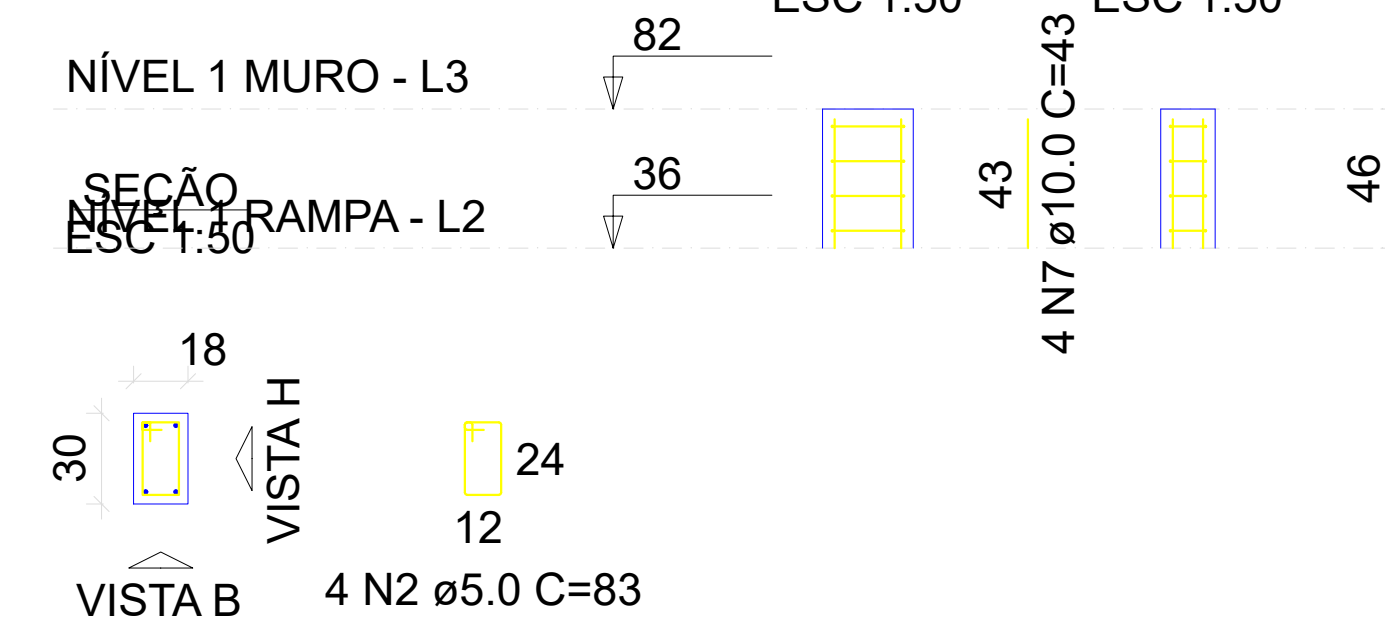


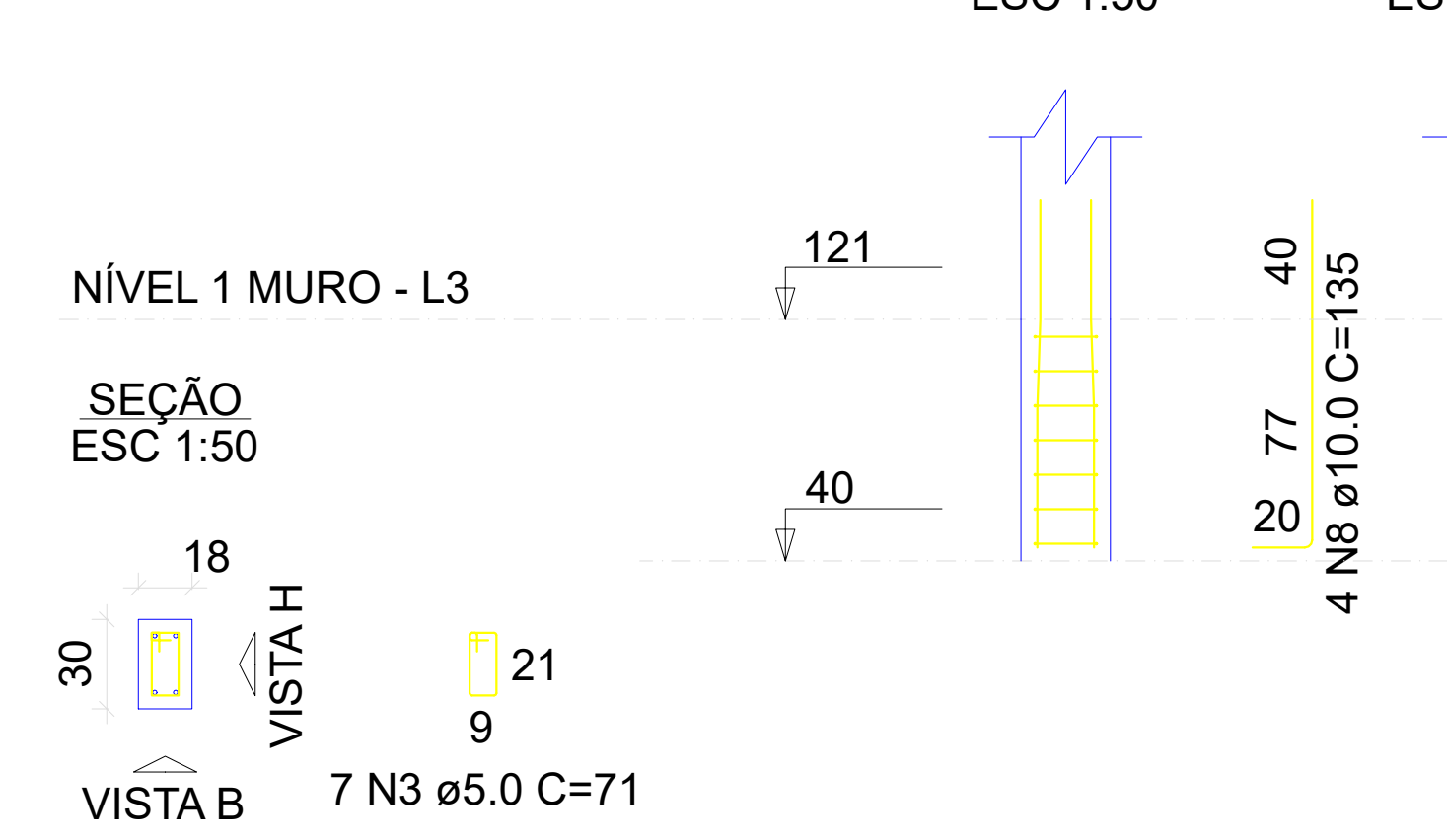
P7=P8=P13=P14



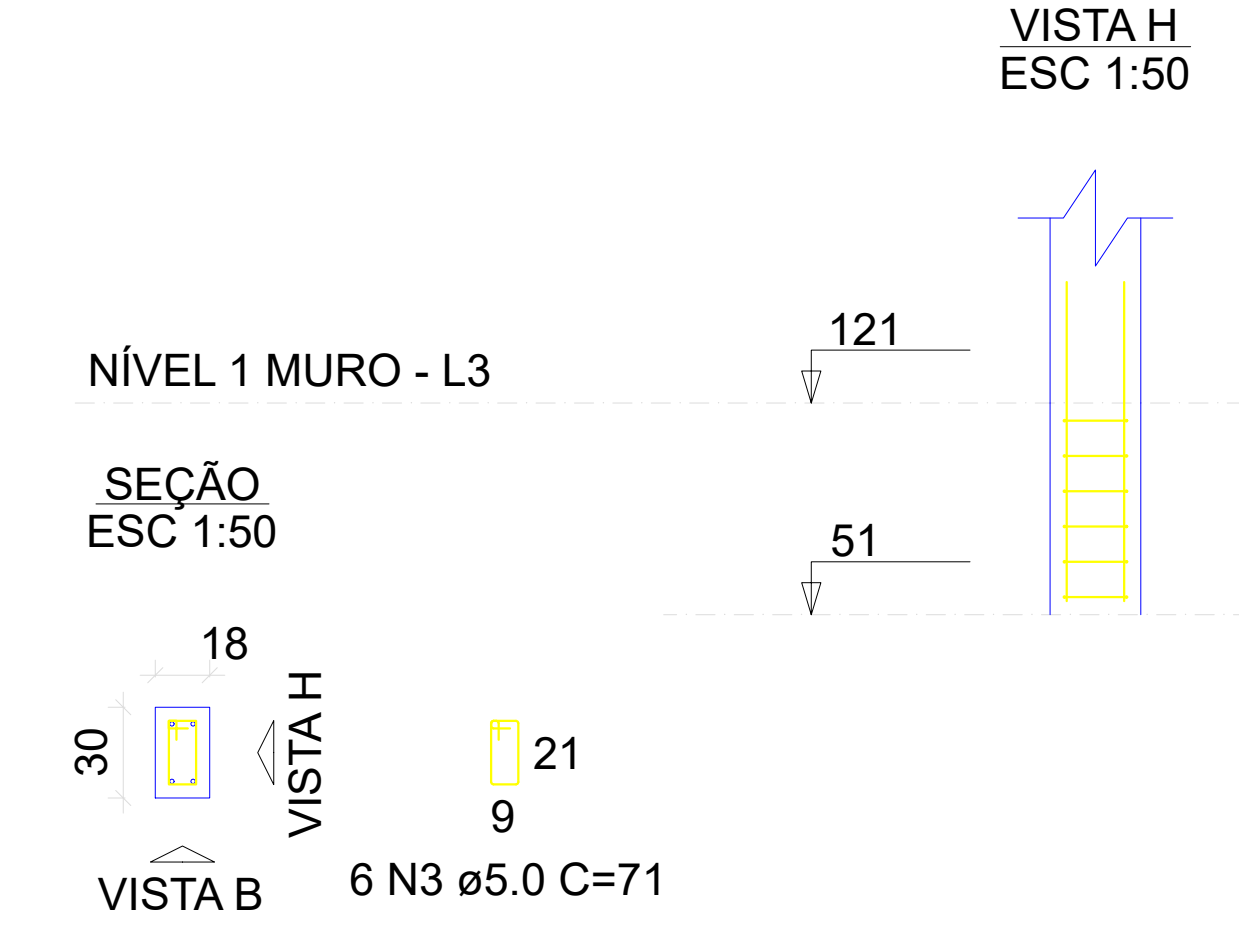
P12



P15=P16



P17=P18=P19=P20



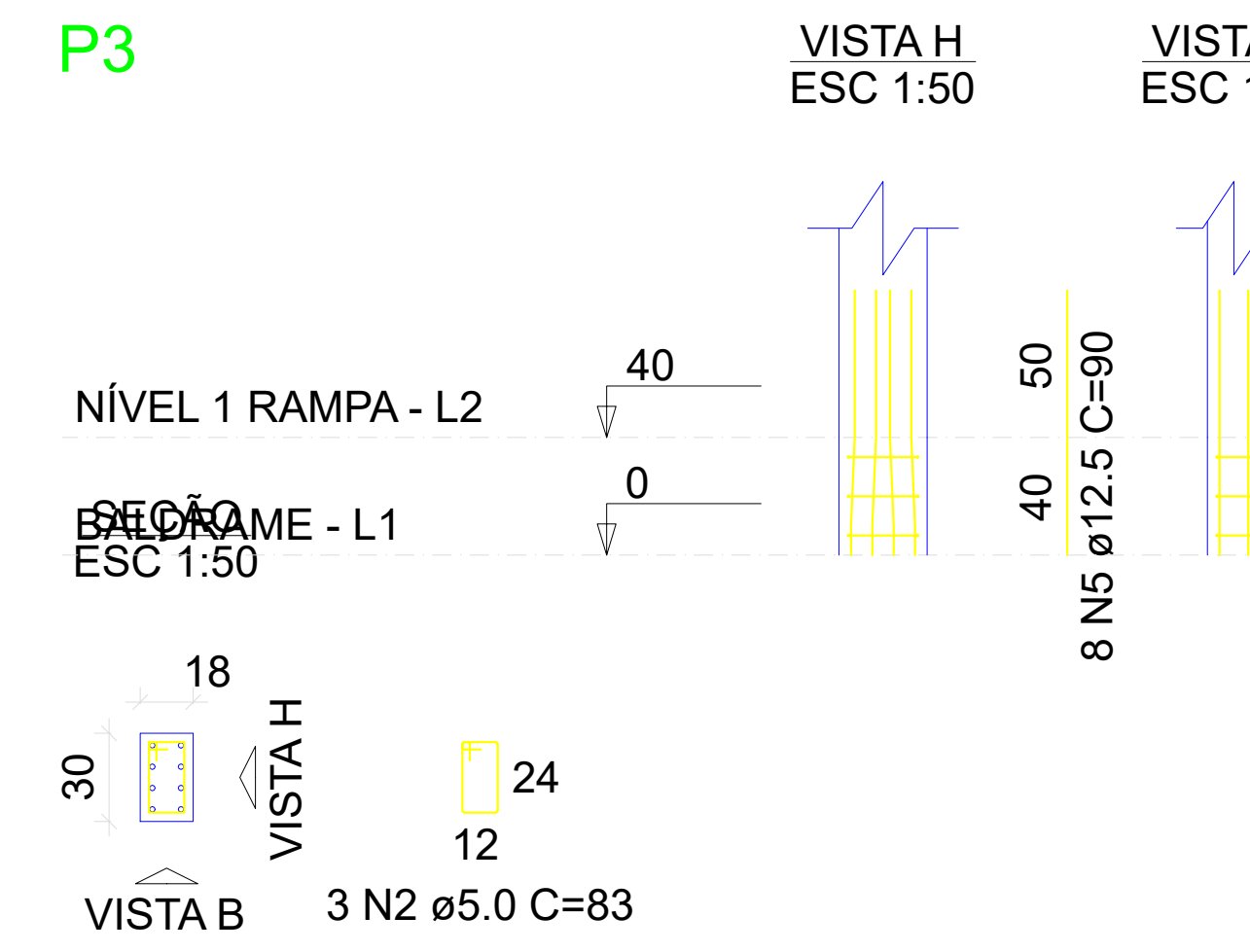
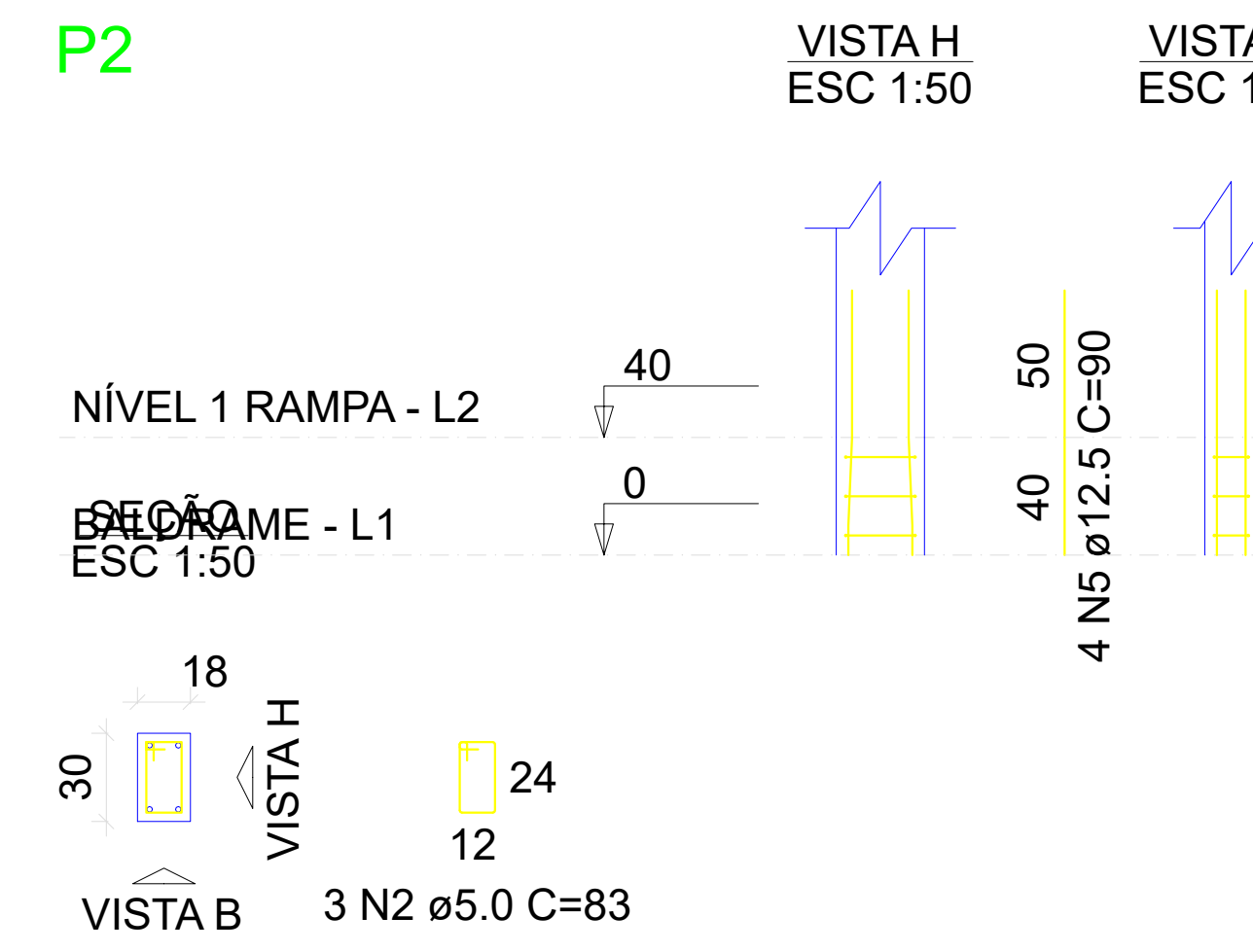
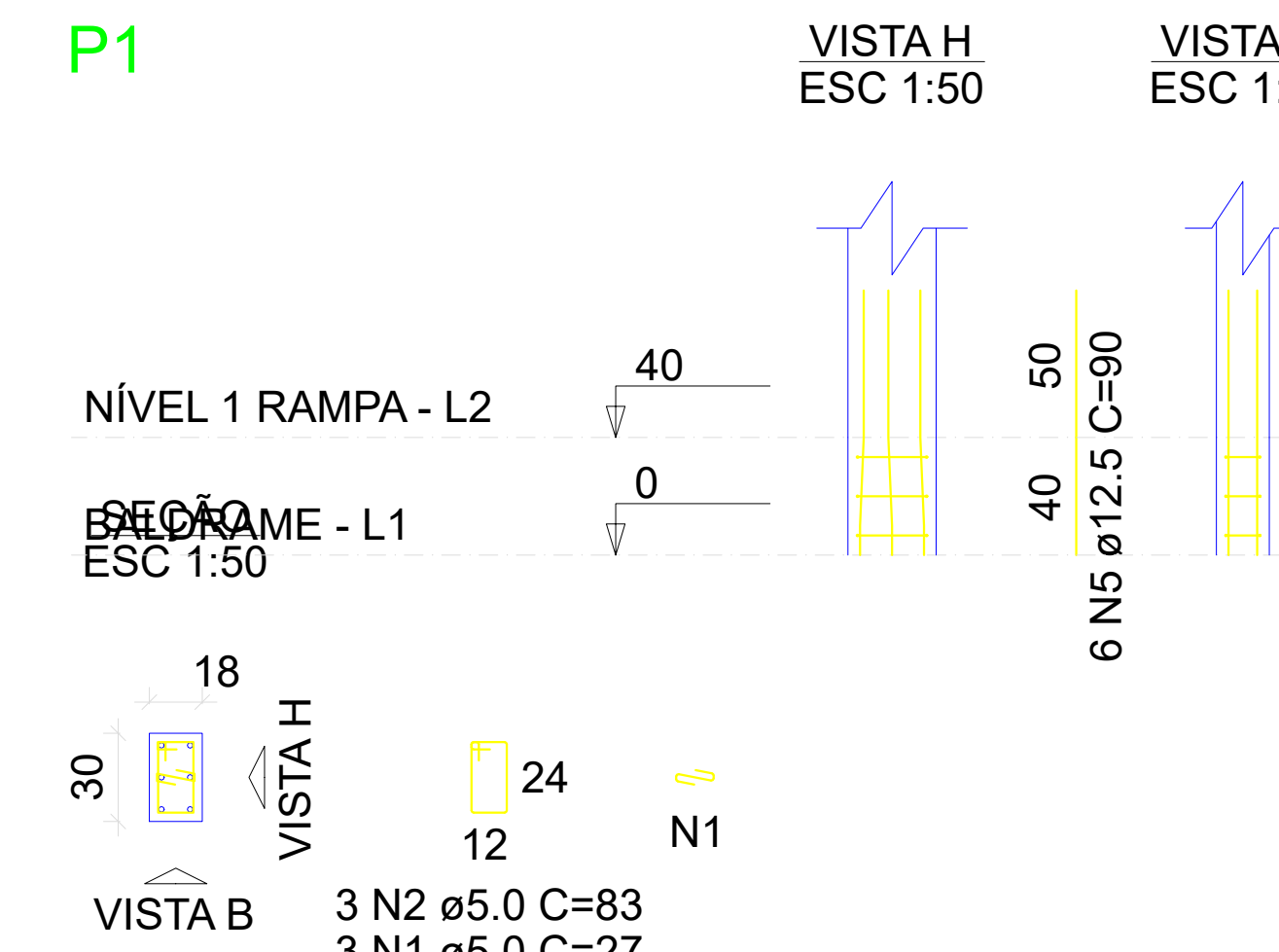
RELAÇÃO DO AÇO

AÇO	N	DIAM (mm)	QUANT	C.UNIT (cm)	C.TOTAL (cm)
CA60	1	5.0	6	27	162
	2	5.0	75	83	6225
	3	5.0	38	71	2698
CA50	4	10.0	12	121	1452
	5	10.0	4	39	156
	6	10.0	16	74	1184
	7	10.0	4	43	172
	8	10.0	8	135	1080
	9	10.0	16	124	1984
	10	12.5	18	131	2358

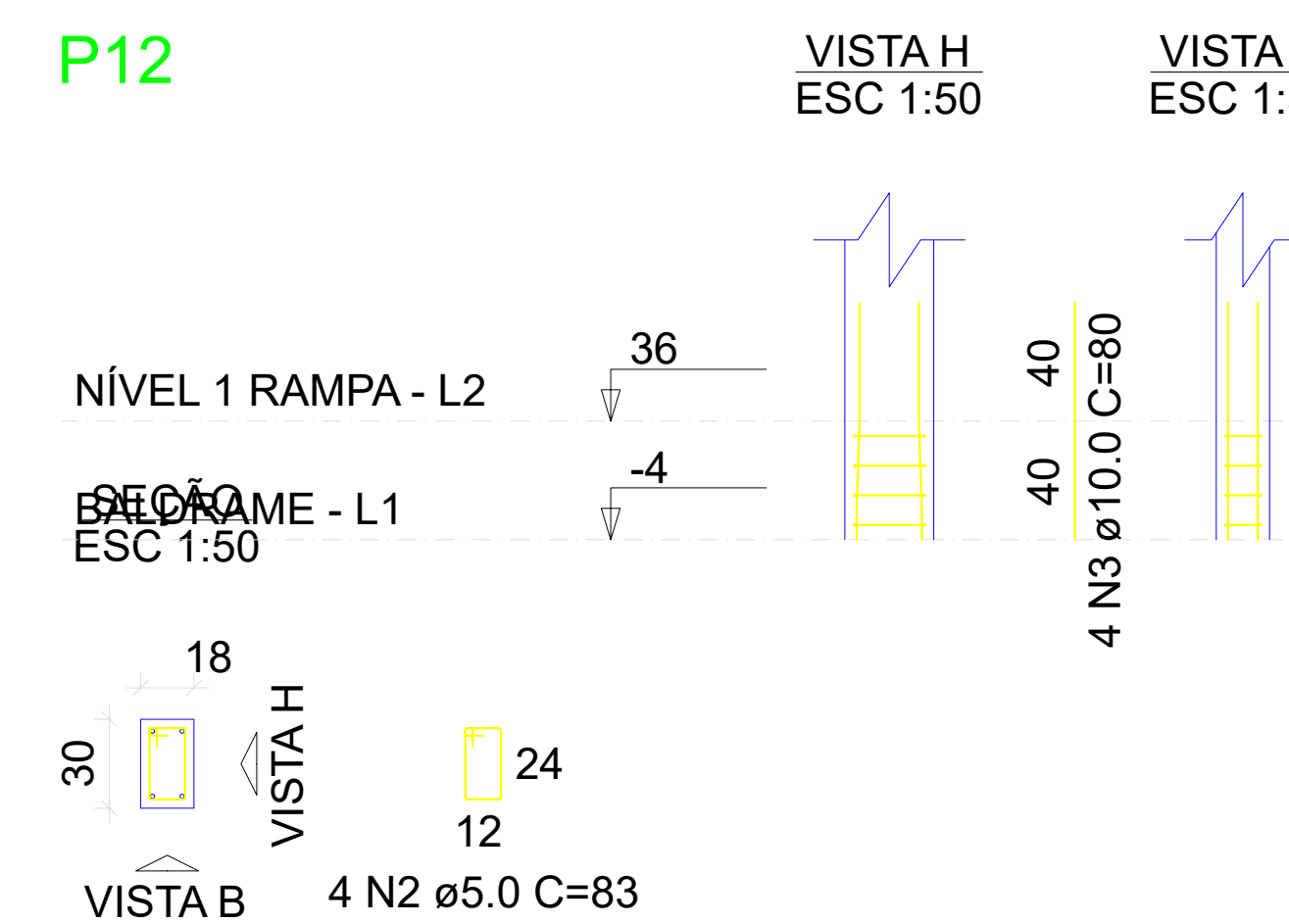
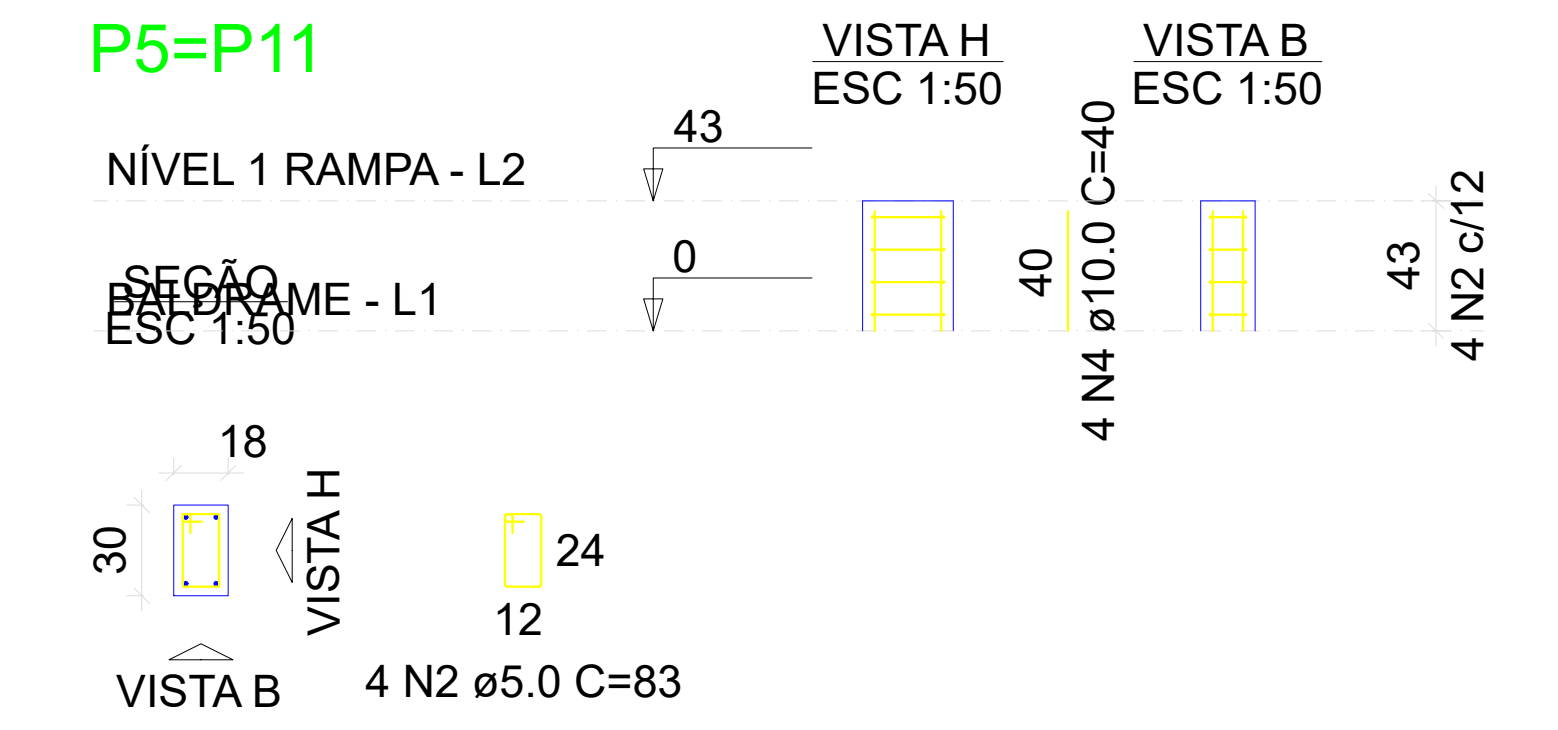
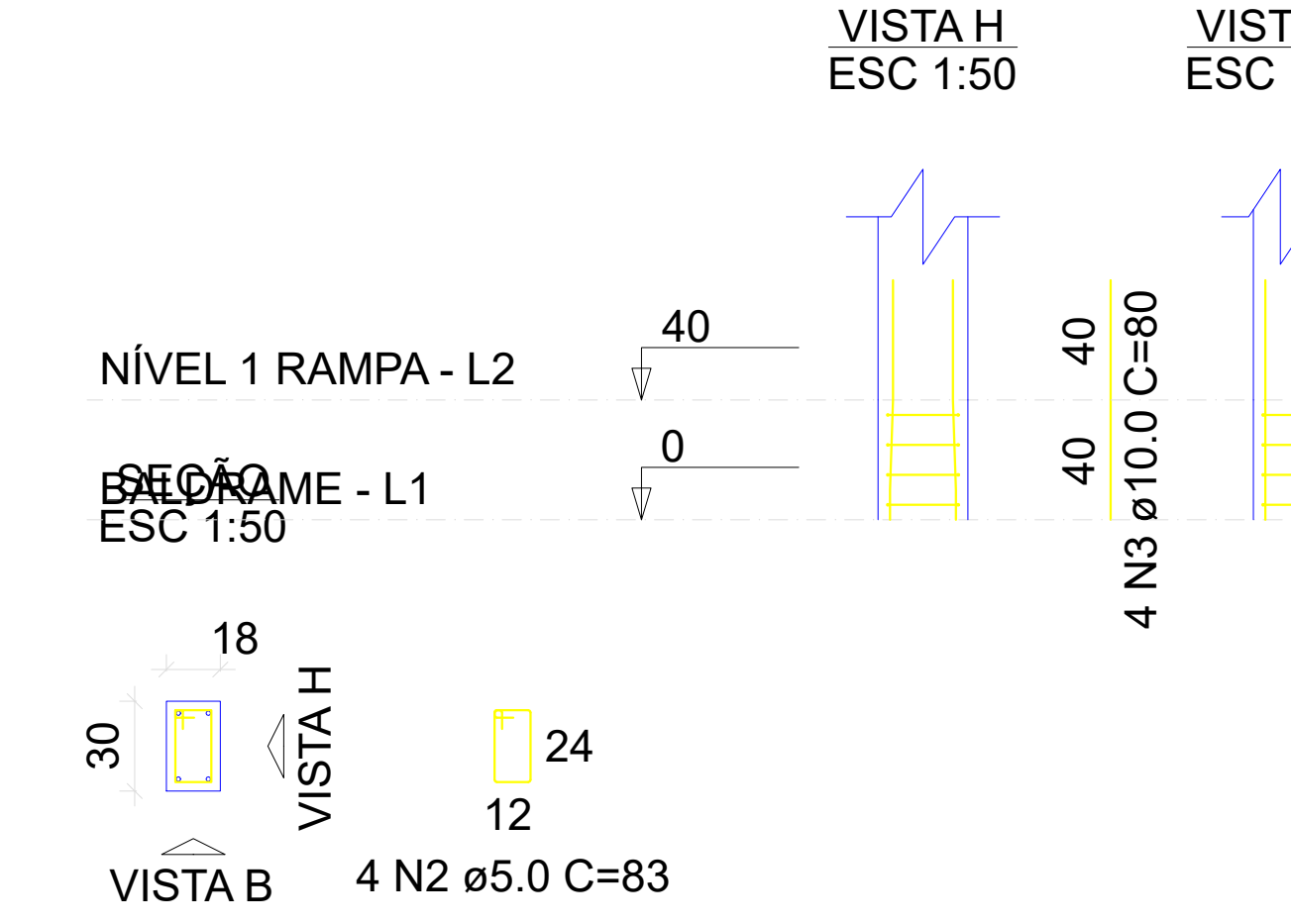
RESUMO DO AÇO

AÇO	DIAM (mm)	C.TOTAL (m)	QUANT + 0% (Barras)	PESO + 0% (kg)
CA50	10.0	60.3	11	37.2
CA60	5.0	90.9	4	22.7
PESO TOTAL (kg)				14
CA50		59.9		
CA60		14		

Volume de concreto (C-25) = 0.59 m³
Área de forma = 10.41 m²



P4=P6=P7=P8=P9=P10=P13=P14

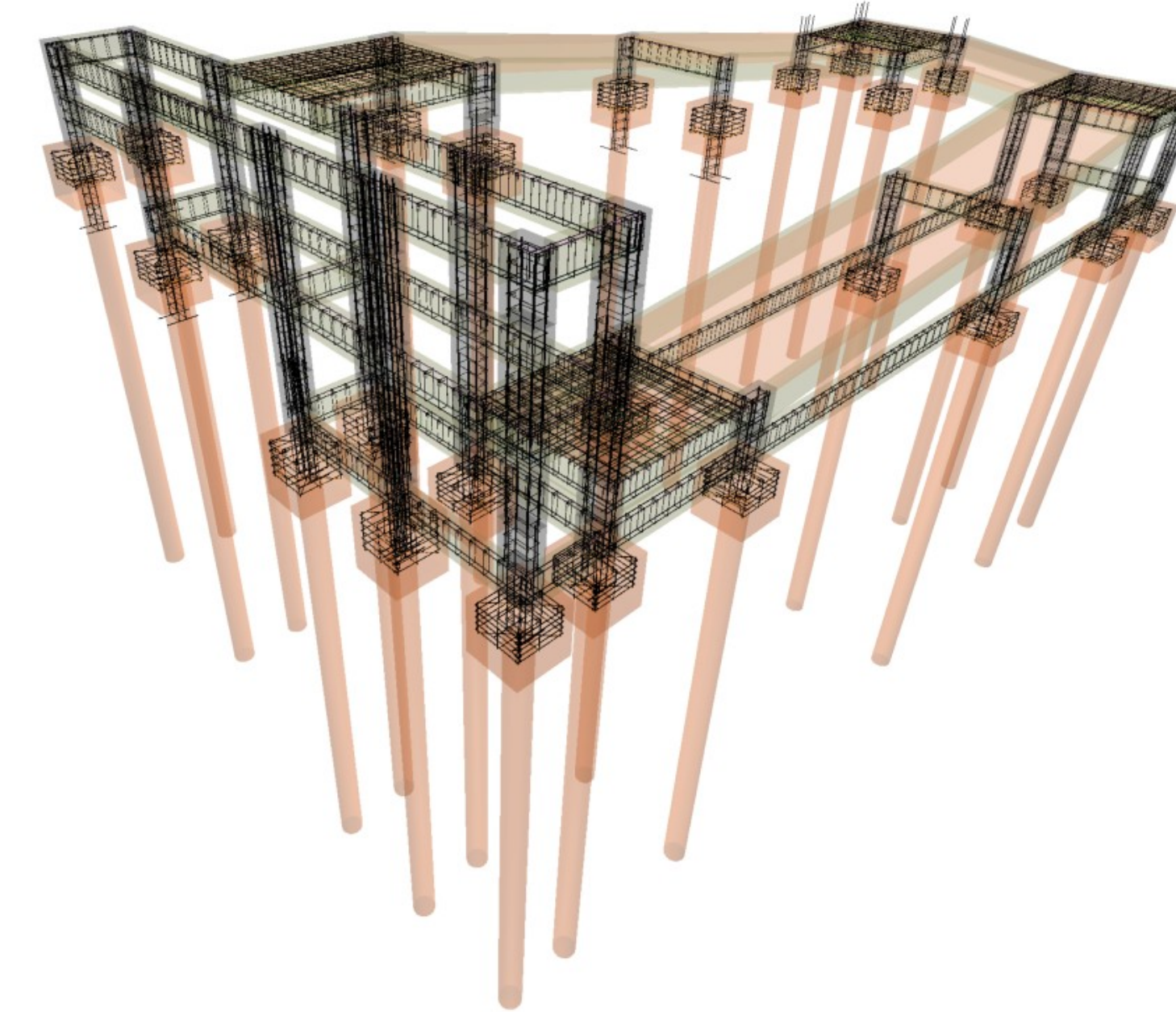


AÇO	N	DIAM (mm)	QUANT	C.UNIT (cm)	C.TOTAL (cm)
CA60	1	5.0	3	27	81
CA60	2	5.0	53	83	4399
CA50	3	10.0	36	80	2880
CA50	4	10.0	8	40	320
CA50	5	12.5	18	90	1620

RESUMO DO AÇO

AÇO	DIAM (mm)	C.TOTAL (m)	QUANT + 0% (Barras)	PESO + 0% (kg)
CA50	10.0	32	6	19.7
CA60	12.5	16.2	3	15.6
CA60	5.0	44.8	-	6.9
PESO TOTAL (kg)				
CA50		35.3		
CA60		6.9		

Volume de concreto (C-25) = 0.31 m³
Área de forma = 5.43 m²



PROJETO ESTRUTURAL

OBRA: CONSTRUÇÃO CAMPO DE FUTEBOL, PLAYGROUND E ATI
ENDEREÇO: AVENIDA Nilson Vidal GOMES, SN, LOTE 0116 QUADRA 164, JARDIM SÃO JORGE, MUNICÍPIO DE PARANAVÁI/PR

RESPONSÁVEL TÉCNICO: Eng. Civil Nilson Vidal Nascimento CREA-PR: 186476/D

PROJETO: DETALHAMENTO DE BLOCOS, PILARES, VIGAS, RAMPAS E RADIER

RAVAMENTO: Pav. UNIDADE: Indicada CONJUNTO: X

PROPRIETÁRIO: Prefeitura Municipal de Paranavai Pr FOLHA: 11/12

DESENHO: Nilson Vidal DATA: 12/11/2125