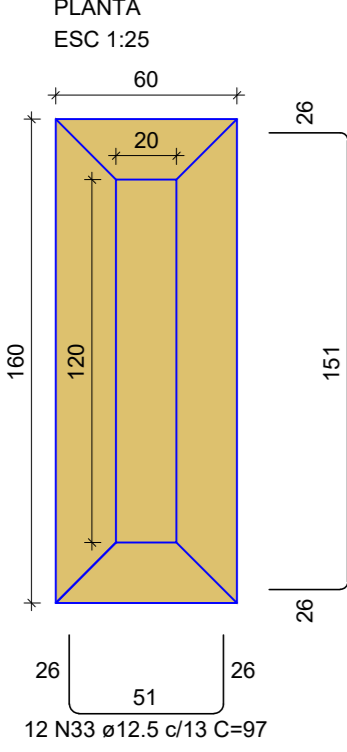
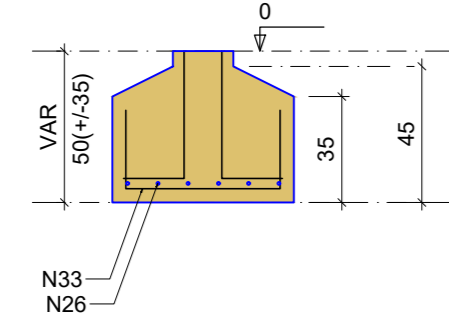


S7=S8

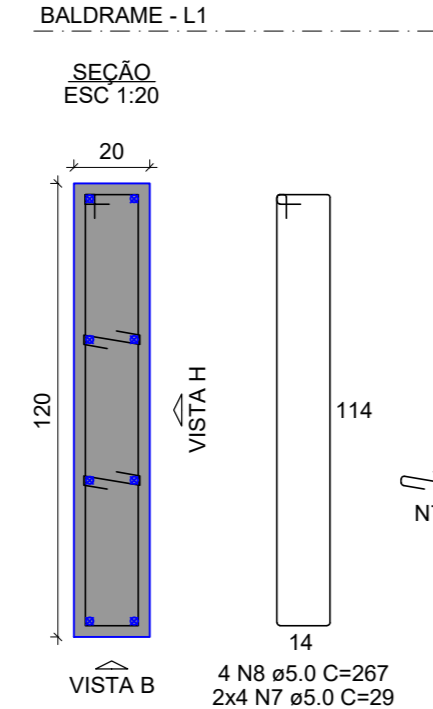


Solo com capacidade de suporte > 2.00 kgf/cm²
Solo compactado sobre a sapata
peso específico > 1600.00 kgf/m³

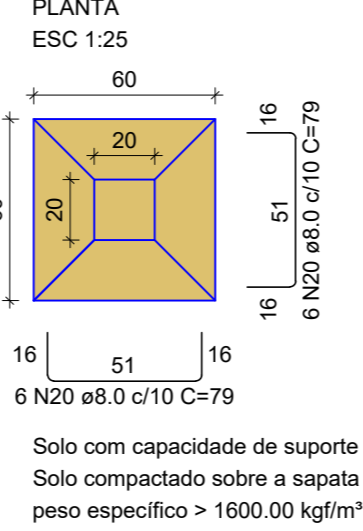
CORTE ESC 1:25



P7=P8

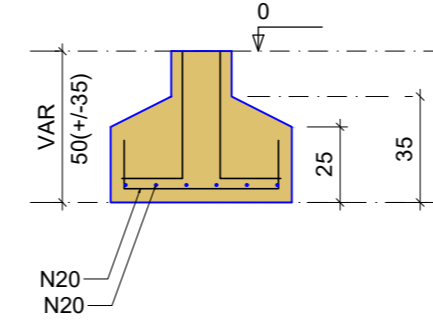


S10

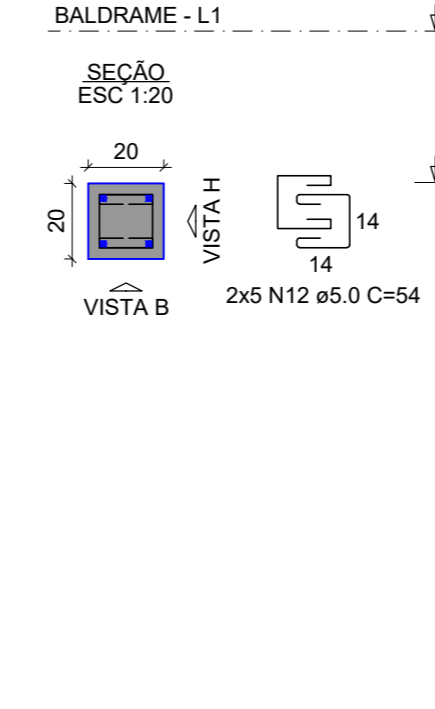


Solo com capacidade de suporte > 2.00 kgf/cm²
Solo compactado sobre a sapata
peso específico > 1600.00 kgf/m³

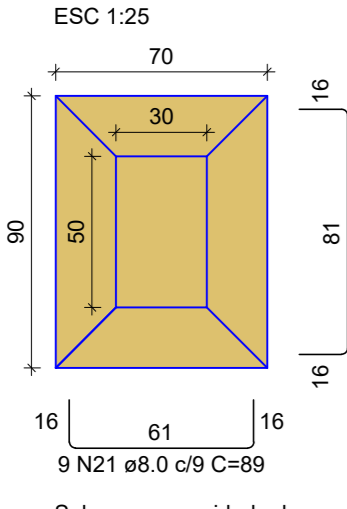
CORTE ESC 1:25



P10

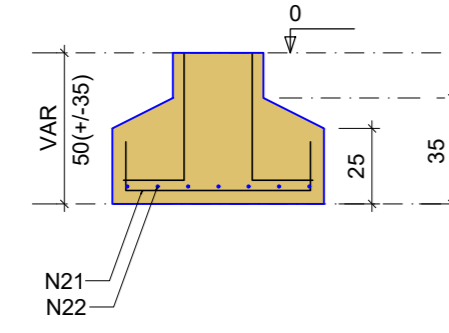


S26

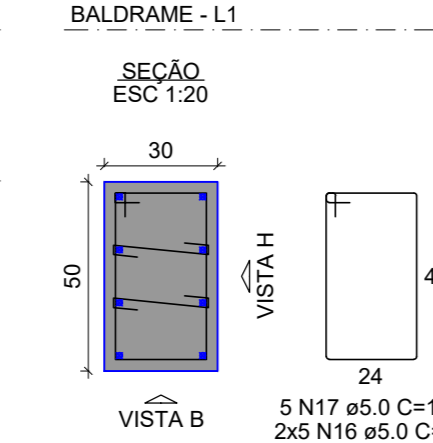


Solo com capacidade de suporte > 2.00 kgf/cm²
Solo compactado sobre a sapata
peso específico > 1600.00 kgf/m³

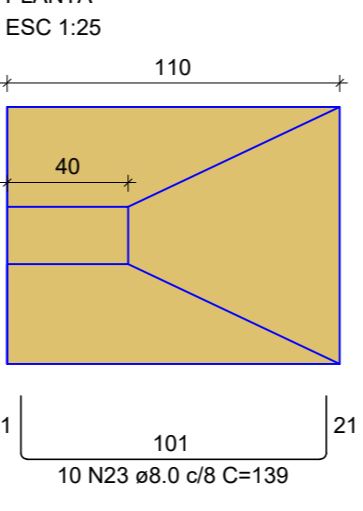
CORTE ESC 1:25



P26

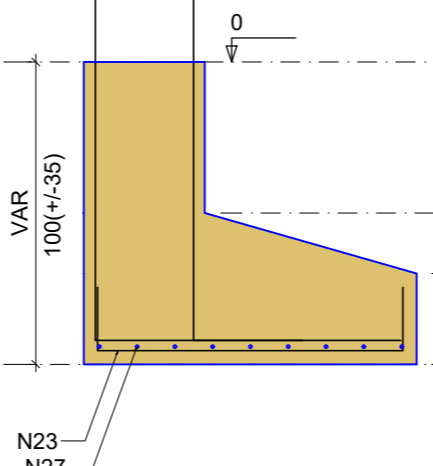


S28=S30=S32=S34

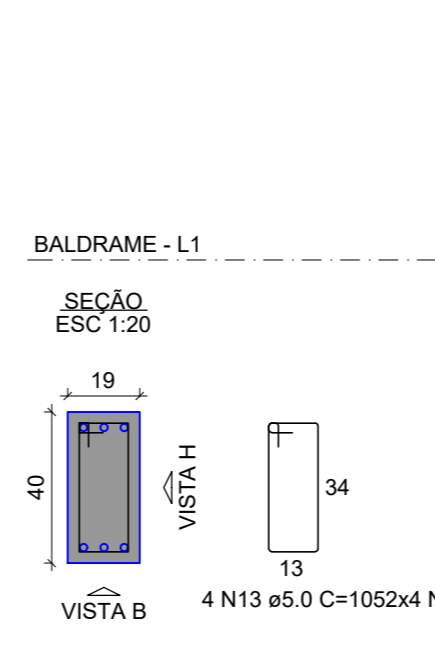


Solo com capacidade de suporte > 2.00 kgf/cm²
Solo compactado sobre a sapata
peso específico > 1600.00 kgf/m³

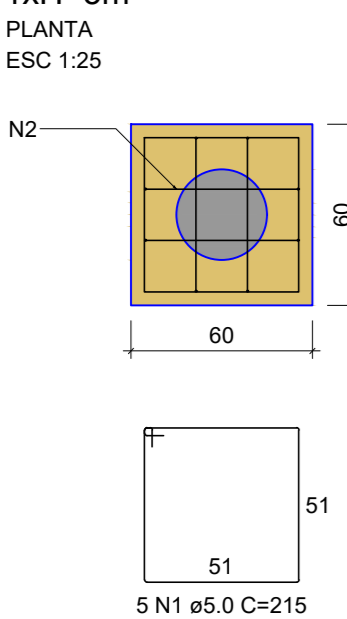
CORTE ESC 1:25



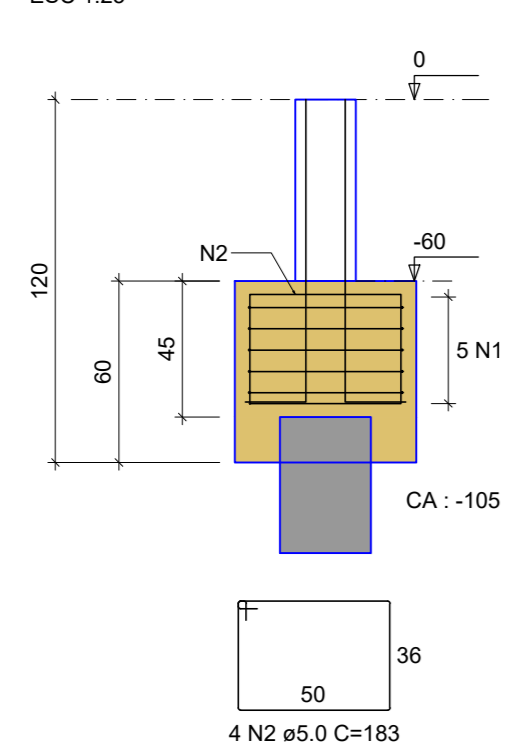
P28=P30=P32=P34



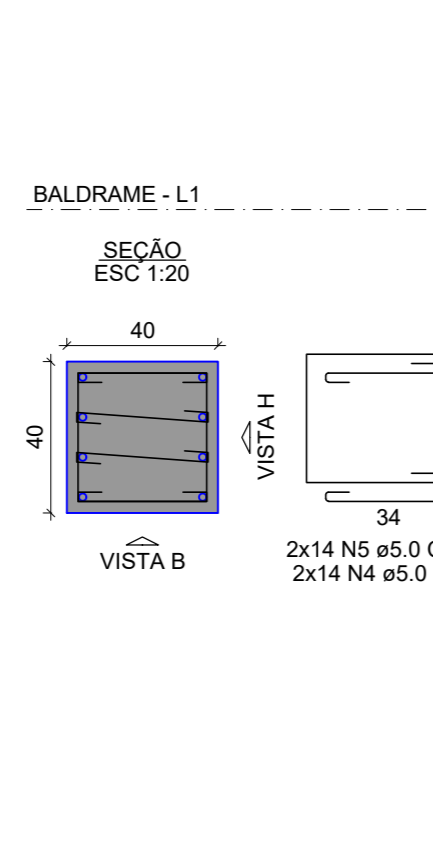
B1=B2=B3=B4=B5=B6=B18=B20



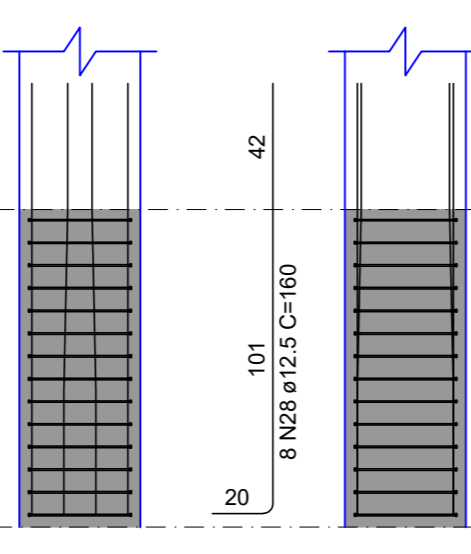
CORTE ESC 1:25



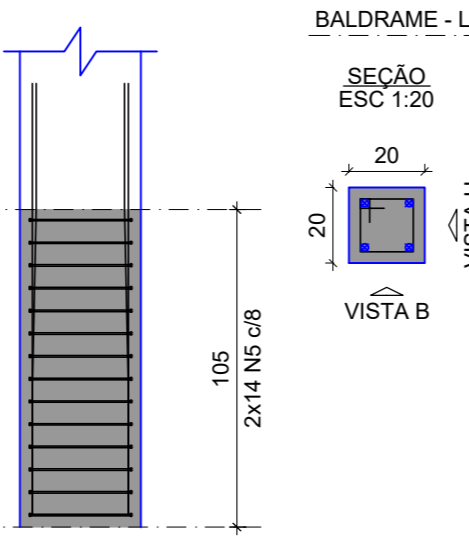
P1



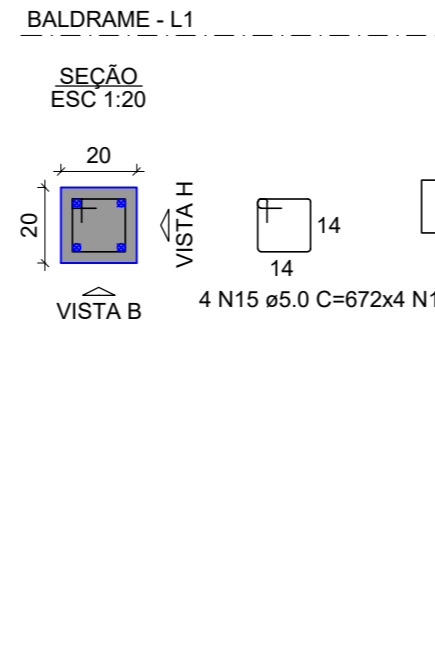
VISTA H ESC 1:25



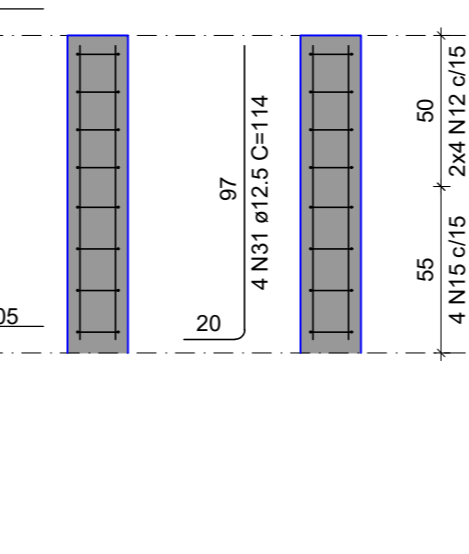
VISTA B ESC 1:25



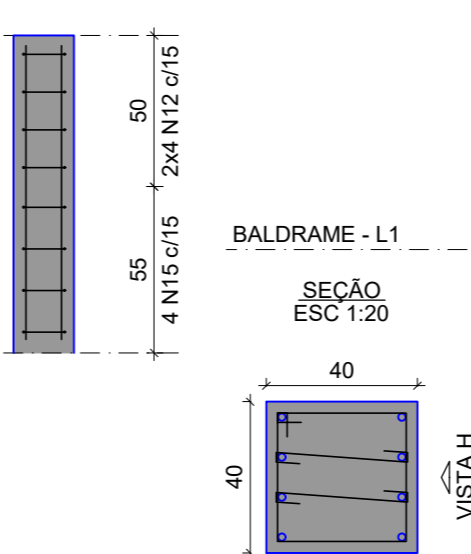
P18=P20



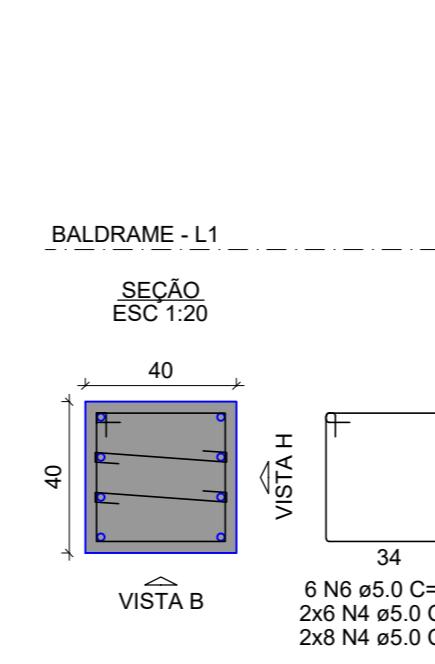
VISTA H ESC 1:25



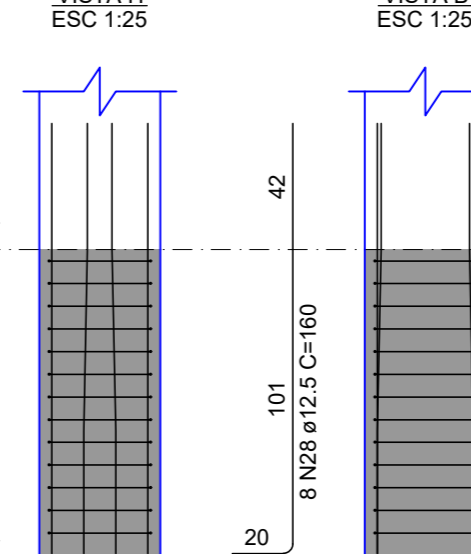
VISTA B ESC 1:25



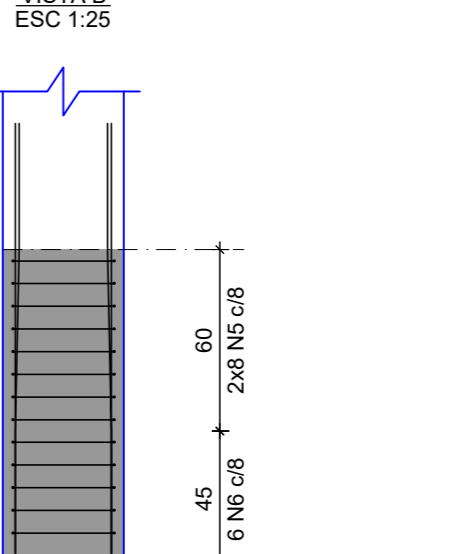
P2=P3=P4=P5=P6



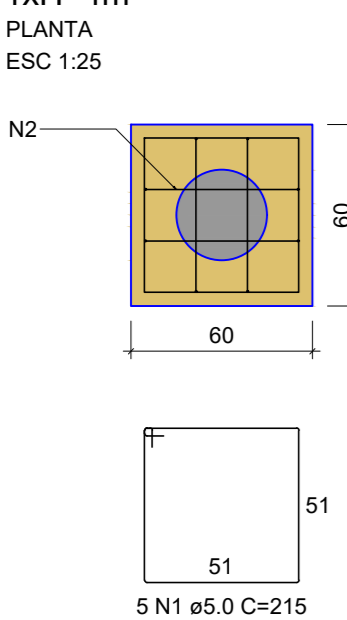
VISTA H ESC 1:25



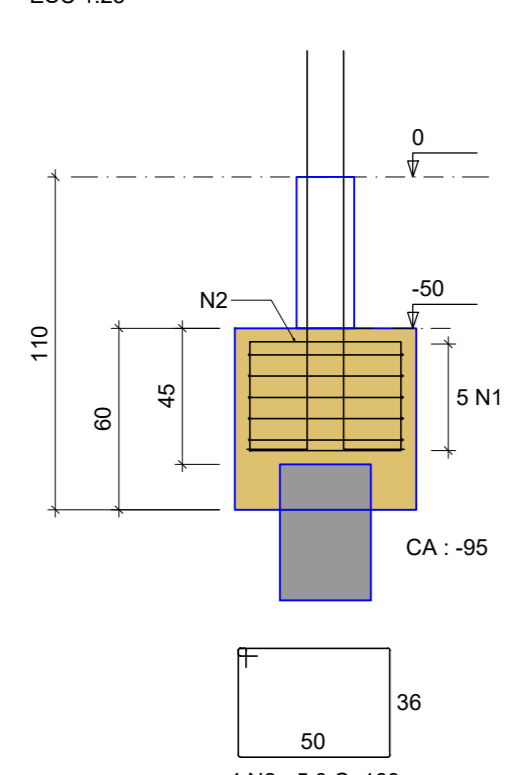
VISTA B ESC 1:25



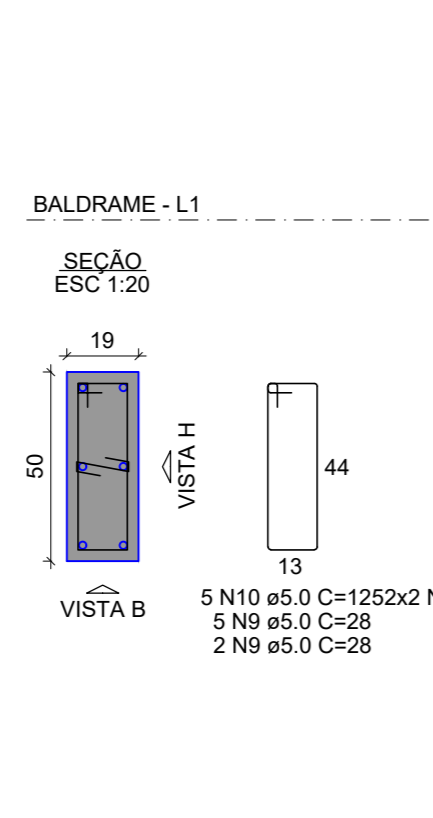
B9



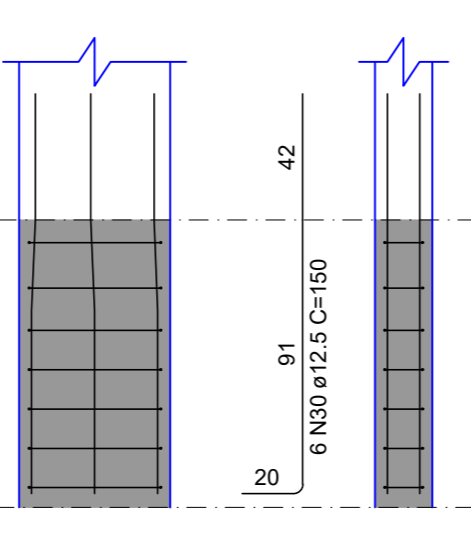
CORTE ESC 1:25



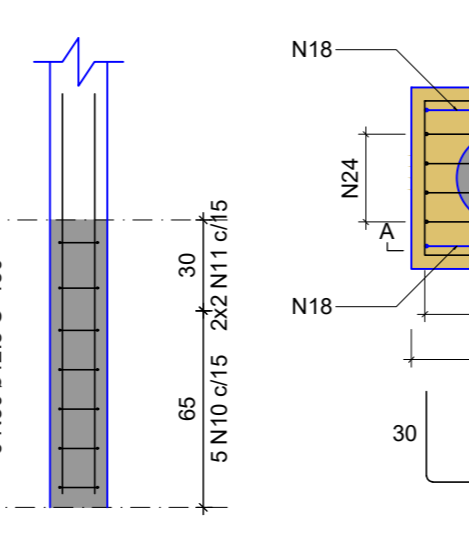
P9



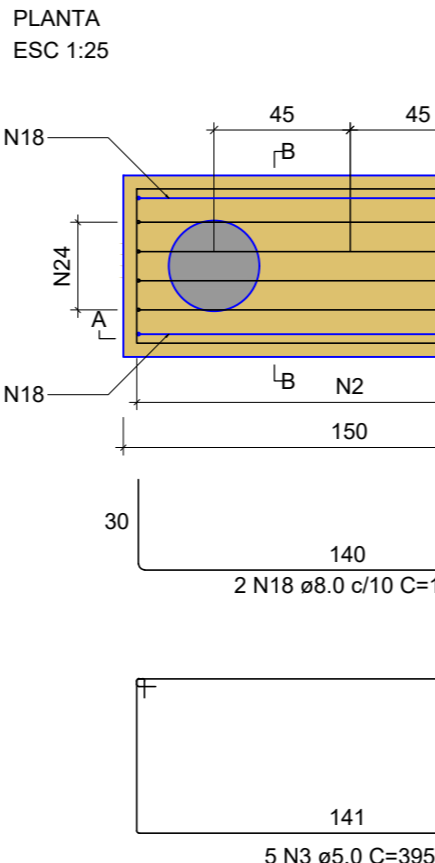
VISTA H ESC 1:25



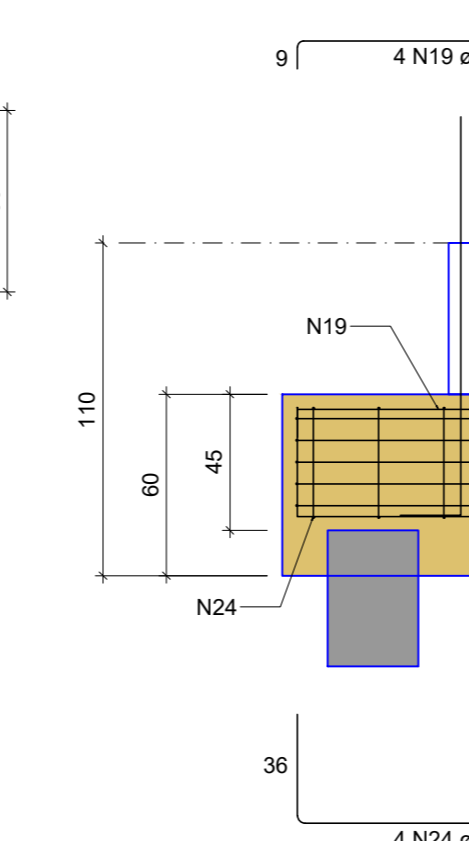
VISTA B ESC 1:25



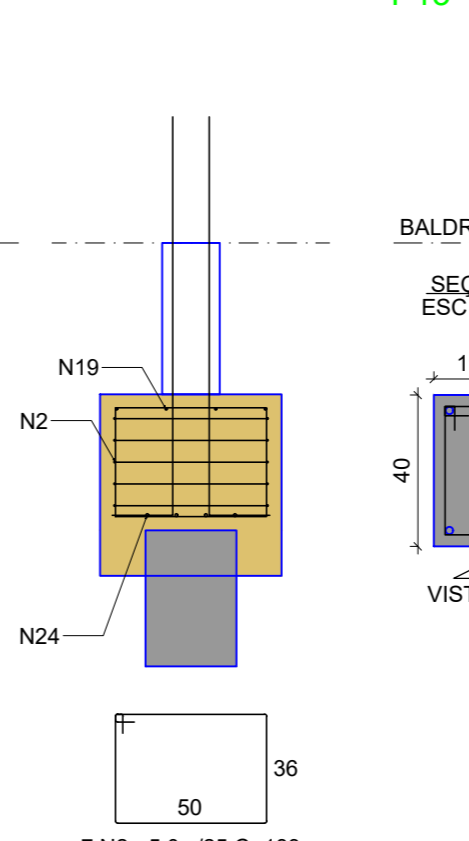
B13



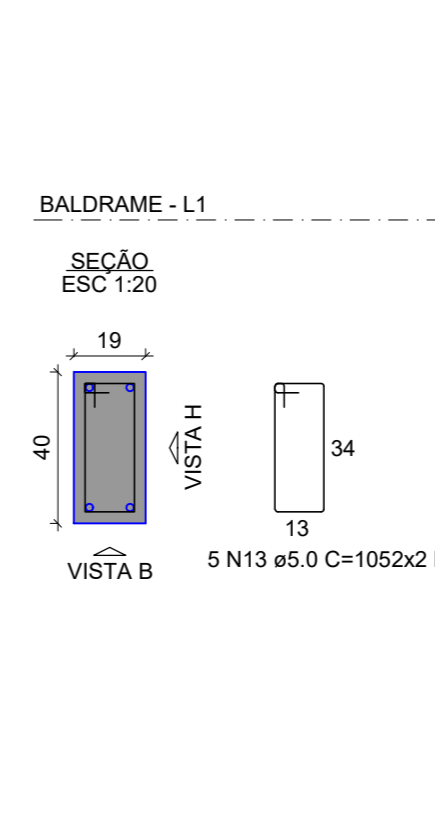
CORTE A-A ESC 1:25



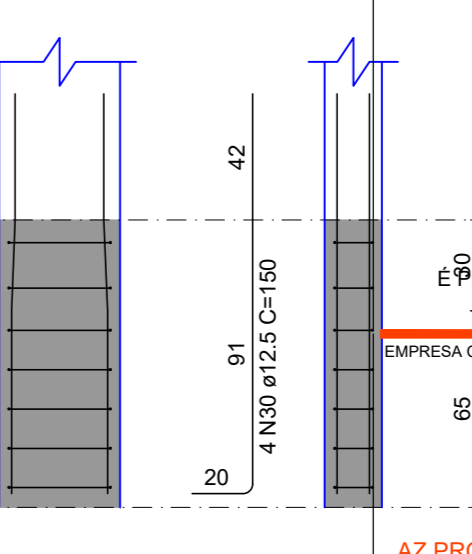
CORTE B-B ESC 1:25



P13



VISTA H ESC 1:25



VISTA B ESC 1:25

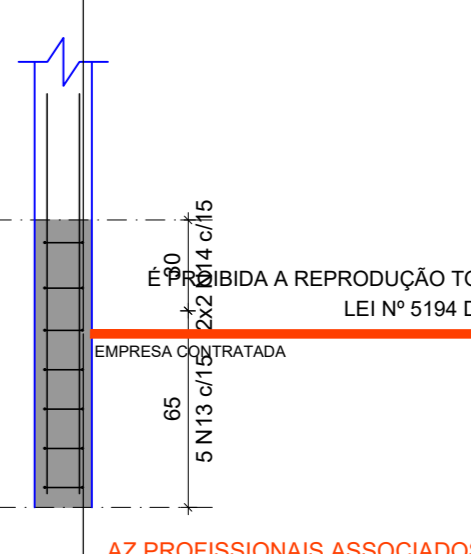


Table with columns: QTD, UN, DESCRICAO, VALOR UNITARIO, VALOR TOTAL. Includes a summary row for 'TOTAL'.

OBS.: TODAS AS UNIDADES DE MEDIDA DO PRESENTE PROJETO ESTÃO EM METROS. CARIMBOS / APROVAÇÕES

É PROIBIDA A REPRODUÇÃO TOTAL OU PARCIAL DESTA OBRA SEM A AUTORIZAÇÃO DA EMPRESA PROJETISTA. LEI Nº 5194 DE 24/12/1966 (ART. 17 E 18) / LEI 9610 DE 19/02/98 (ART. 7 INCISO X)

Table with columns: EMPRESA CONTRATADA, RESPONSÁVEL TÉCNICO, PROPRIETÁRIOS. Includes names and identification numbers.

PROFISSIONAIS ASSOCIADOS
ÁREA COBERTA ESPAÇO CULTURAL
SÃO MIGUEL DA BOA VISTA
LADO PAR DA RUA SÃO LUIZ, ESQUINA COM A RUA ALDINO JACOB SCHNEIDER
MUNICÍPIO DE SÃO MIGUEL DA BOA VISTA
ESTADO DE SANTA CATARINA
CNPJ Nº: 00.912.124/0001-02



Table with columns: AUTORA, DEB., ESCALA, INDICADA, DATA. Includes author name and date.

Table with columns: CONTEÚDO DA PRANCHA, REV., PROJETO, FASE, FOLHA, TOTAL. Includes sheet information.