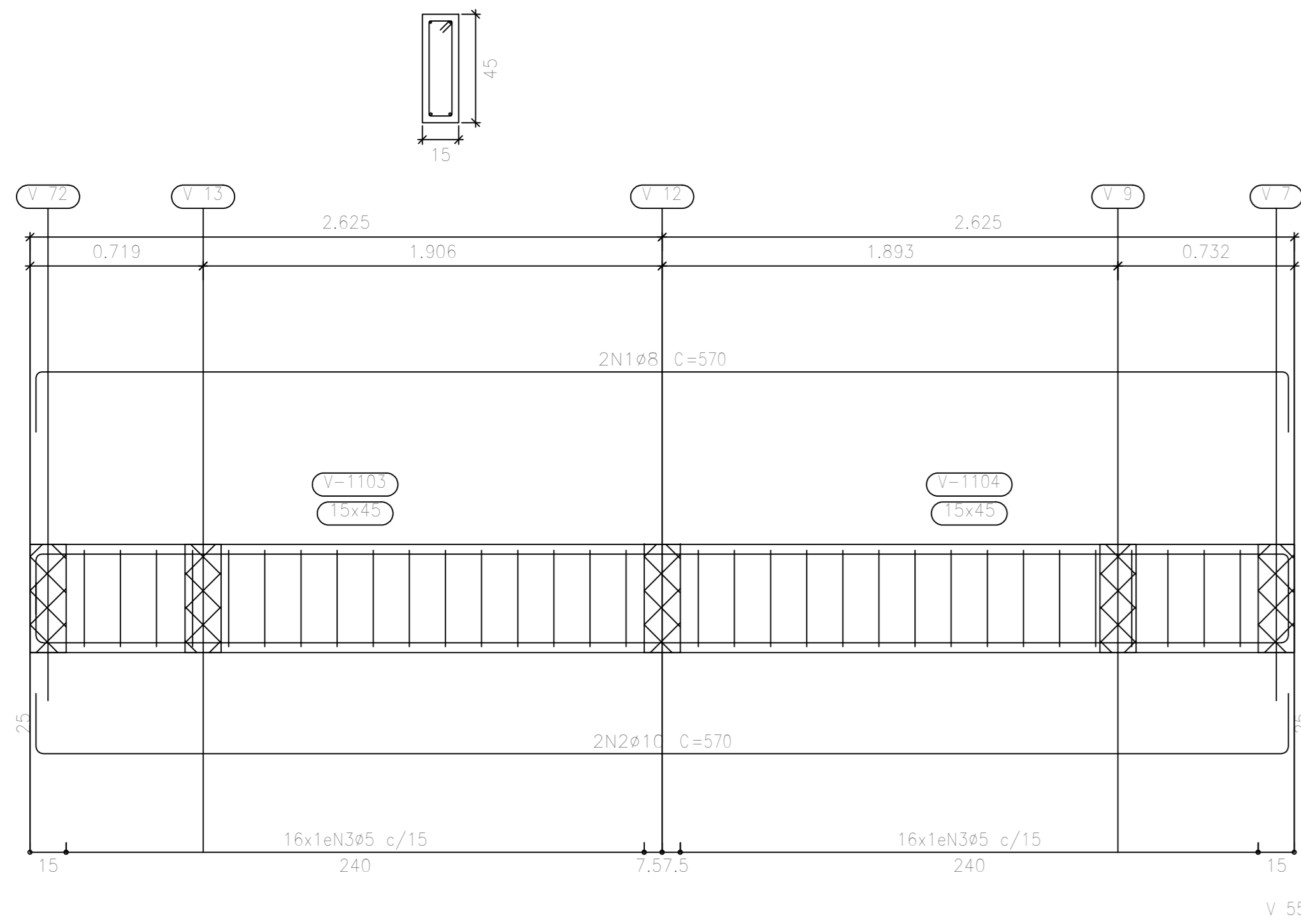
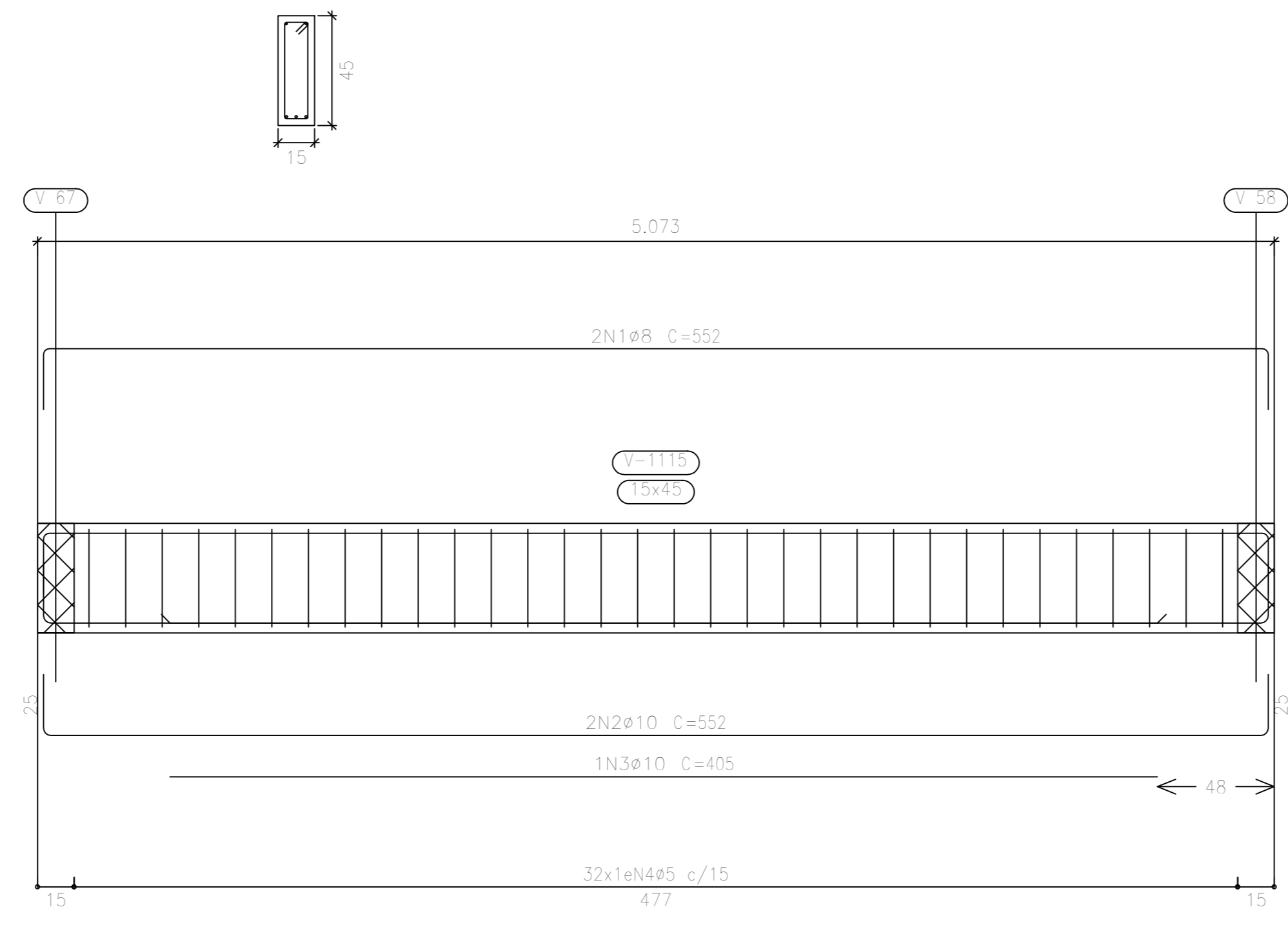


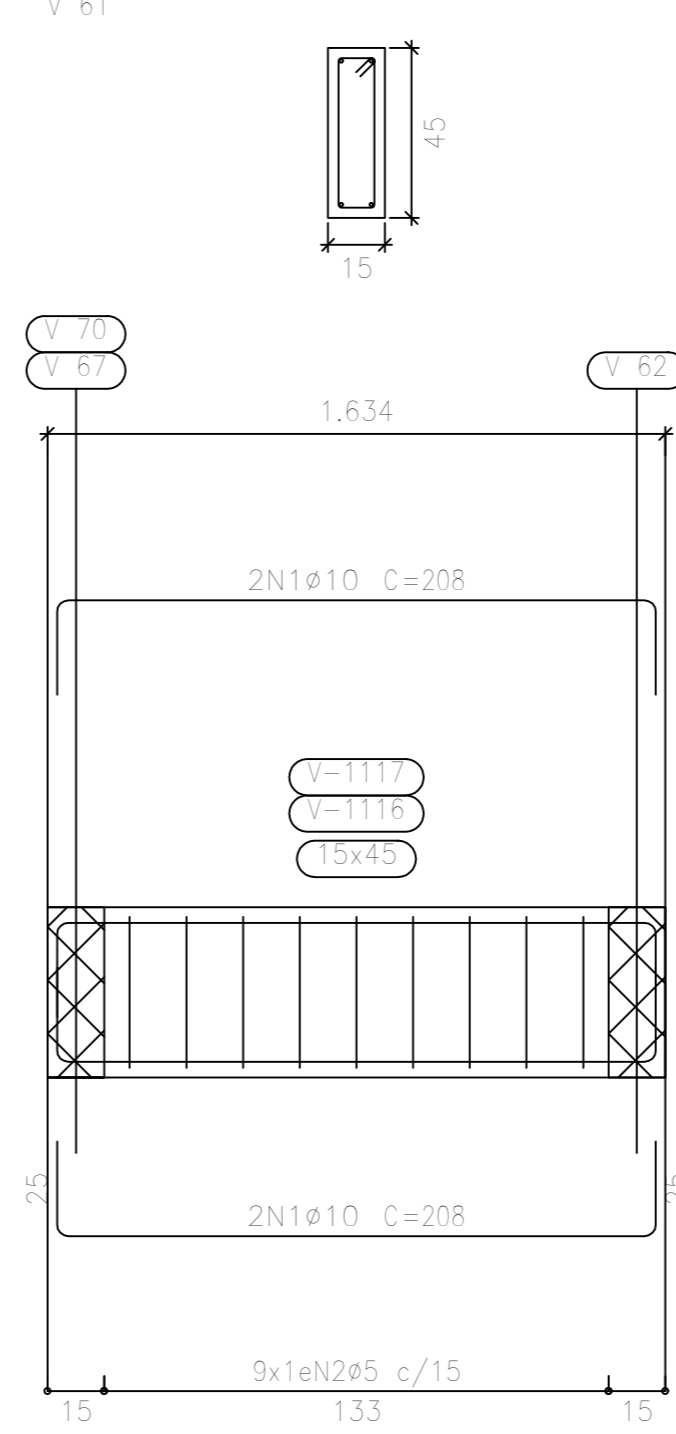
V 52



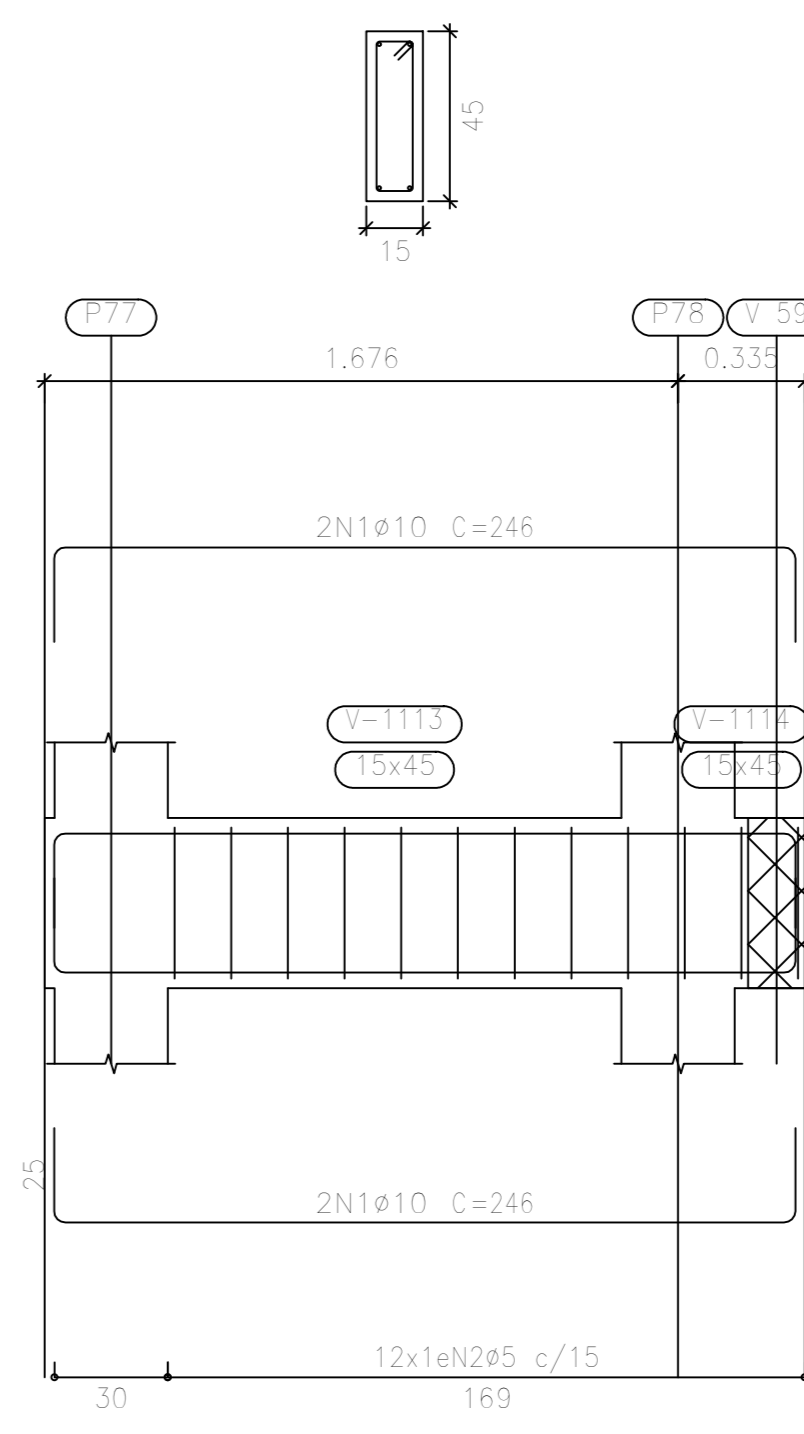
V 53



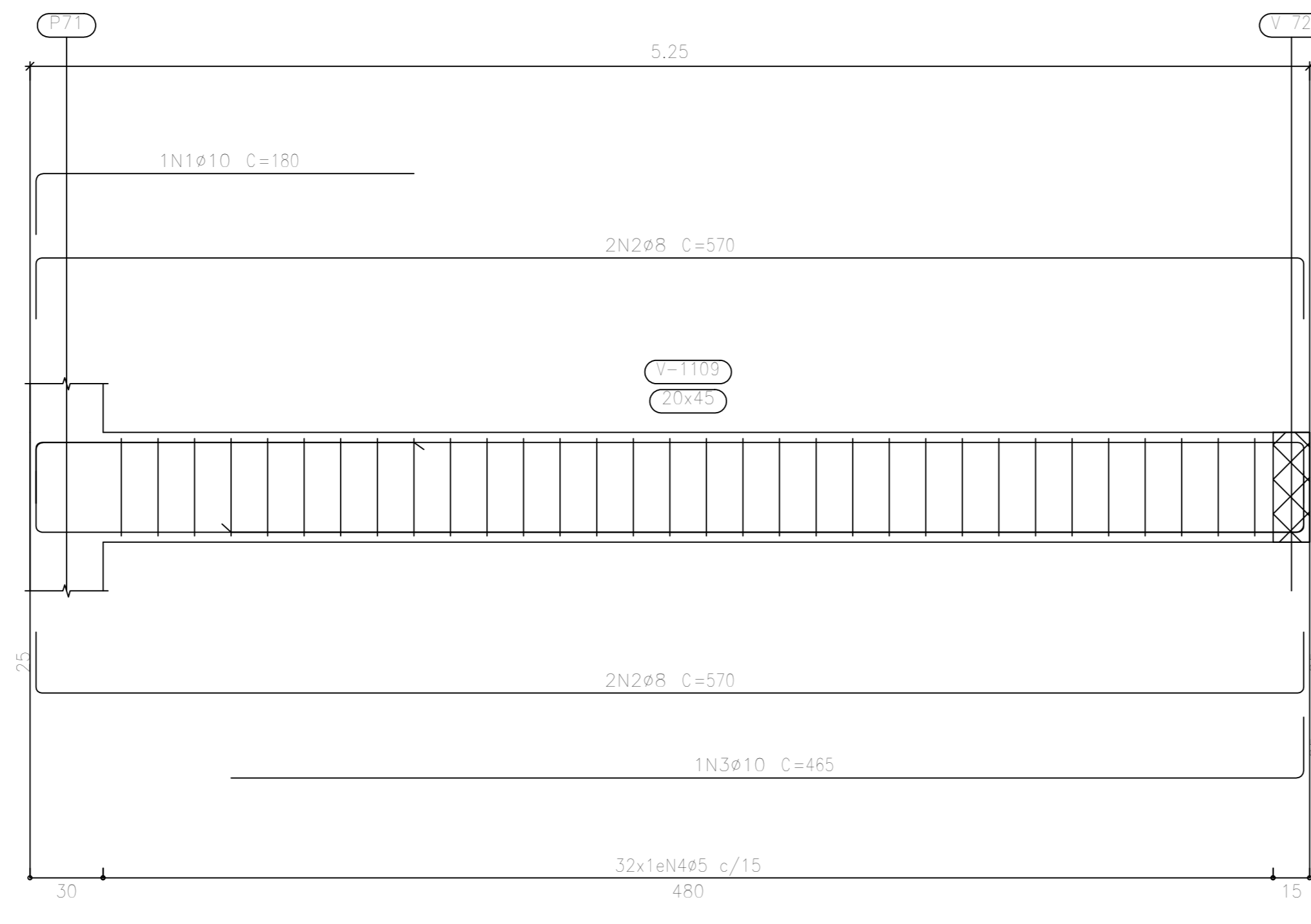
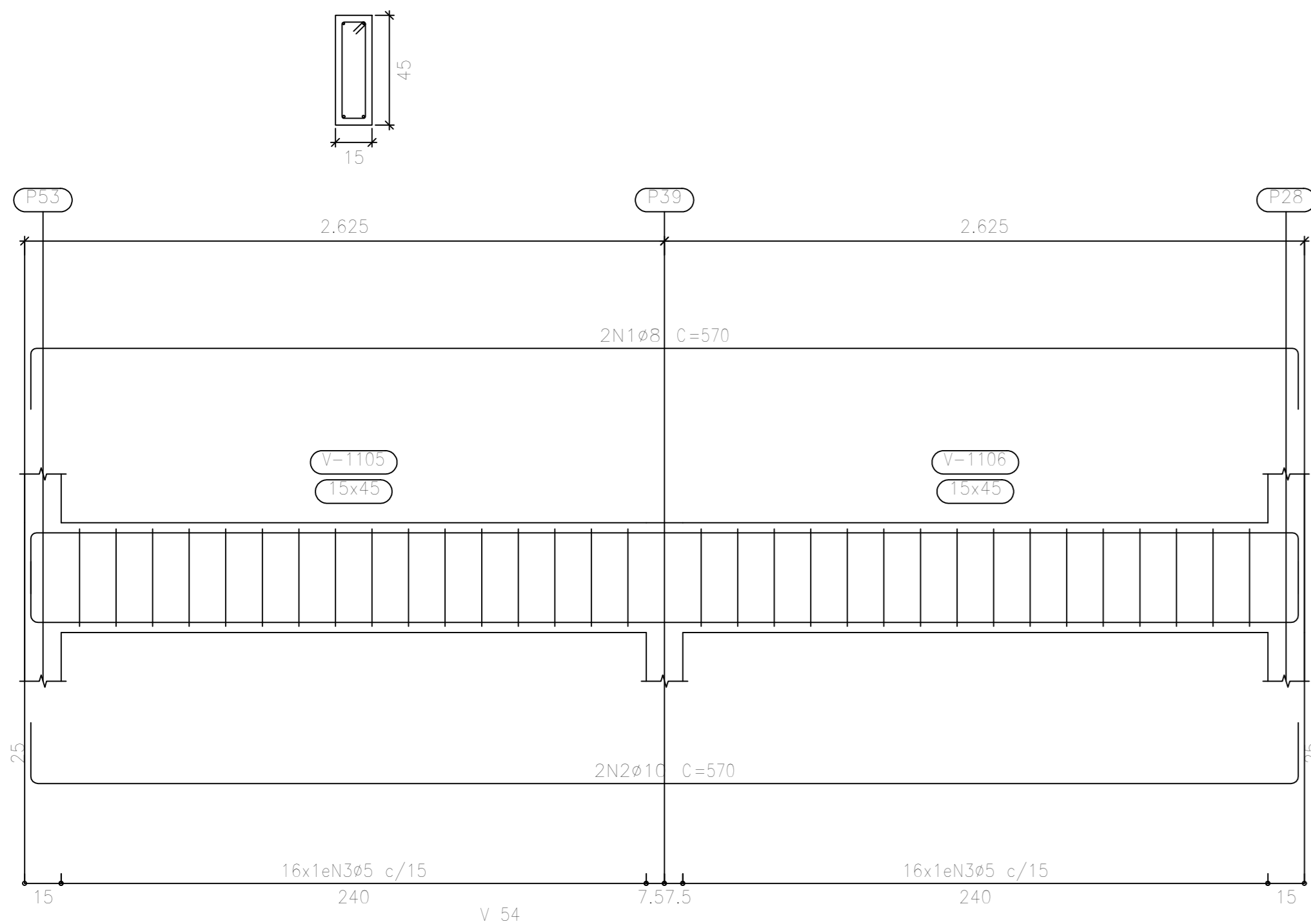
V 60



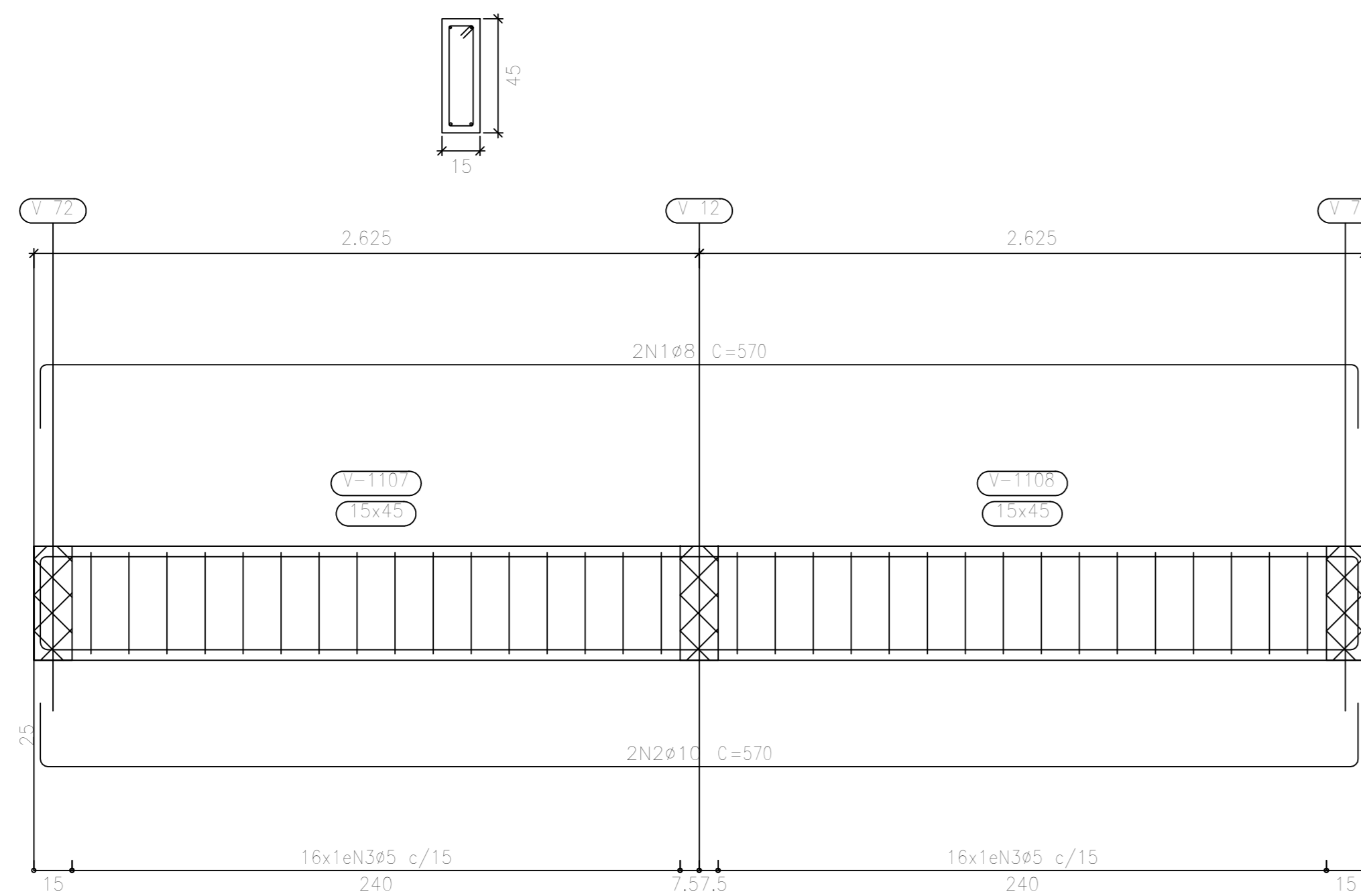
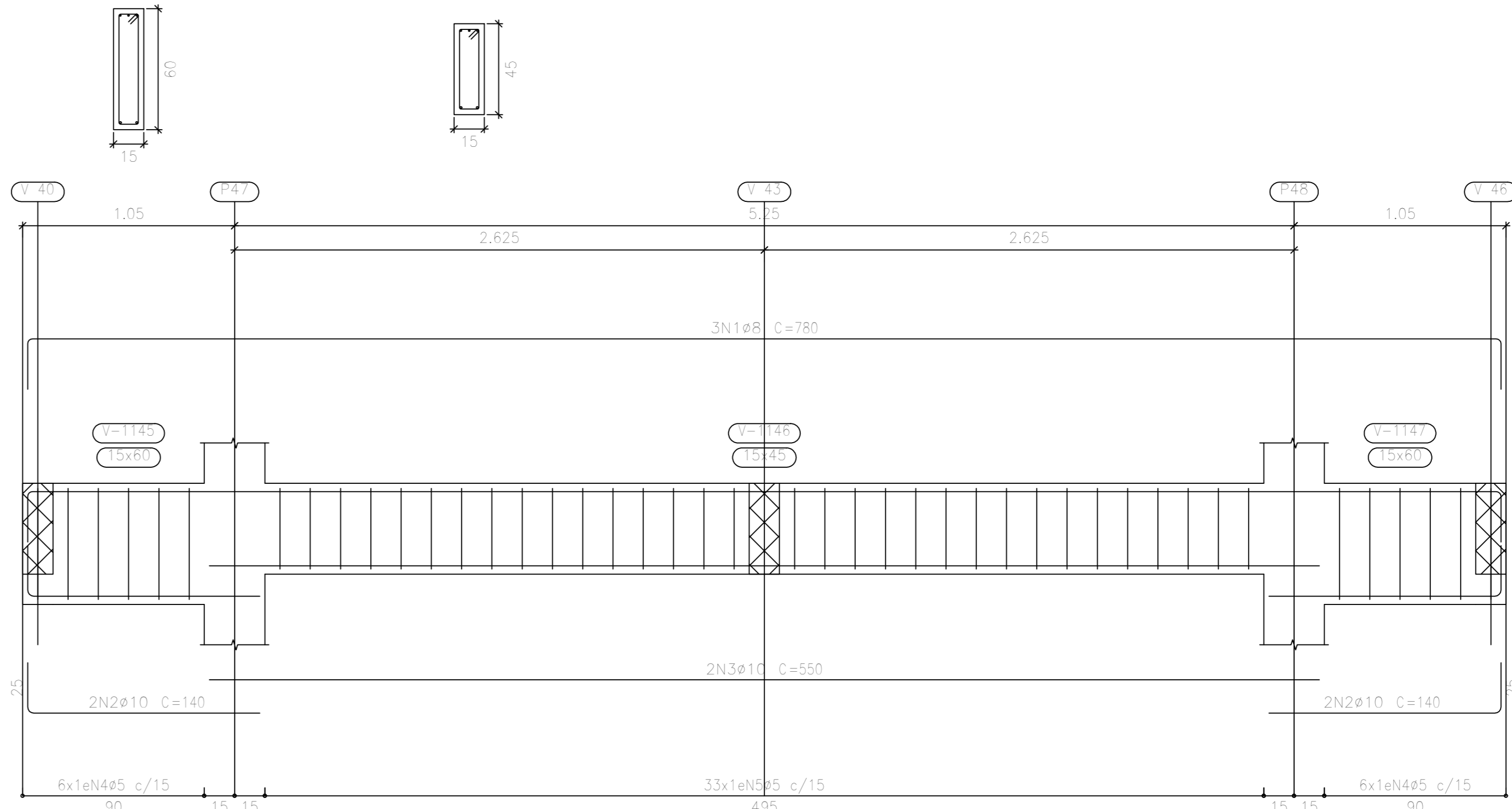
V 58



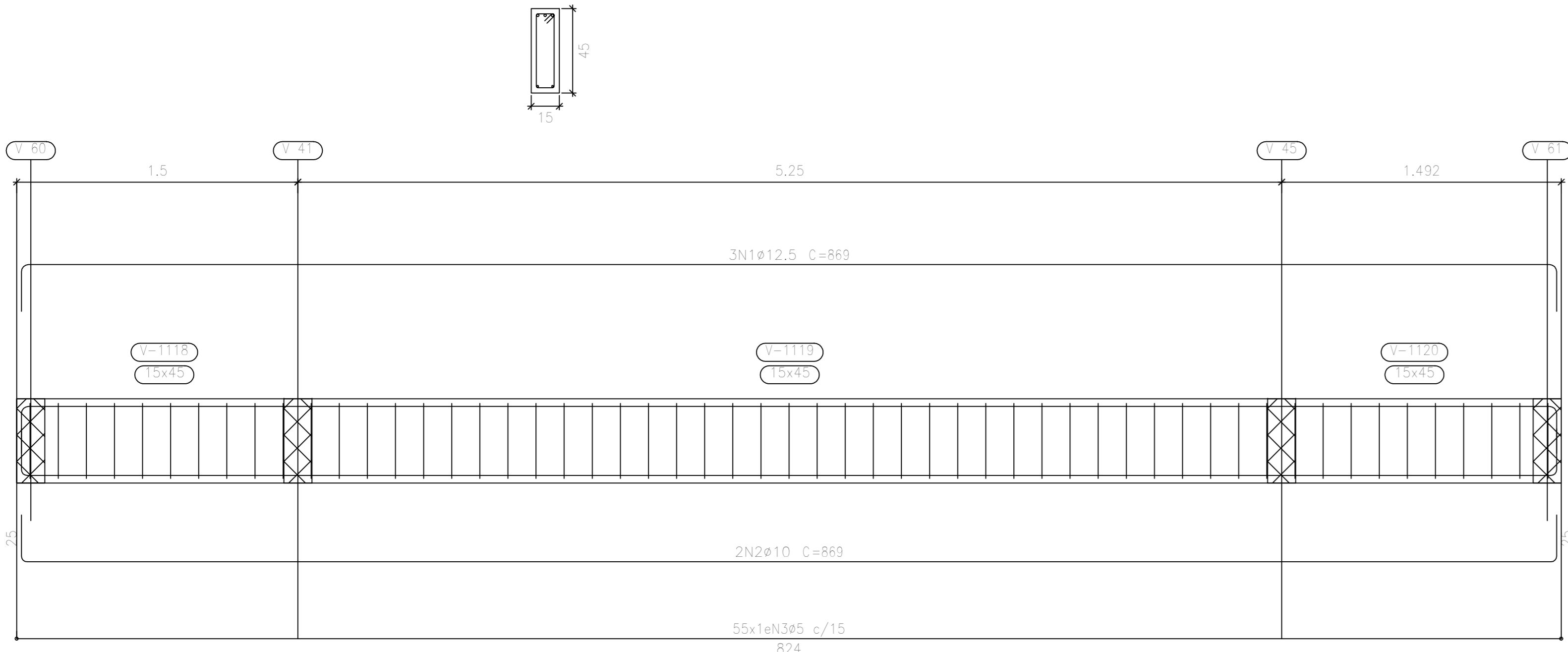
V 53



V 71



V 62



Elemento	Pos.	Diam.	Q.	Esquema (cm)	Comp. (cm)	Vol. (m³)	Peso (kg)
V 52	1	Ø8	2	[Diagram]	370	144	4.5
	2	Ø10	2	[Diagram]	370	150	7.0
	3	Ø5	33	[Diagram]	108	3454	5.4
				108x103	32.7	5.3	
V 53	1	Ø8	2	[Diagram]	370	144	4.5
	2	Ø10	2	[Diagram]	370	150	7.0
	3	Ø5	33	[Diagram]	108	3454	5.4
				108x103	32.7	5.3	
V 58	1	Ø8	2	[Diagram]	370	144	4.4
	2	Ø10	2	[Diagram]	370	150	6.8
	3	Ø10	1	[Diagram]	405	405	2.5
	4	Ø5	33	[Diagram]	108	3454	5.4
				108x103	35.1	5.0	
V 54	1	Ø8	2	[Diagram]	370	144	4.5
	2	Ø10	2	[Diagram]	370	150	7.0
	3	Ø5	33	[Diagram]	108	3454	5.4
				108x103	32.7	5.0	
V 55	1	Ø8	2	[Diagram]	370	144	4.4
	2	Ø10	2	[Diagram]	370	150	6.8
	3	Ø10	1	[Diagram]	405	405	2.5
	4	Ø5	33	[Diagram]	118	3714	5.4
				108x103	34.1	6.1	
V 60+61	1	Ø10	4	[Diagram]	208	821	5.1
	2	Ø5	9	[Diagram]	108	872	1.5
				108x103	140	11.2	
V 58	1	Ø10	4	[Diagram]	214	804	5.1
	2	Ø5	13	[Diagram]	108	1294	2.0
				108x103	6.1	7.2	
V 62	1	Ø12.5	3	[Diagram]	869	260	25.1
	2	Ø10	4	[Diagram]	869	1734	10.7
	3	Ø5	59	[Diagram]	108	5940	9.3
				108x103	35.4	40.2	
V 71	1	Ø8	4	[Diagram]	120	234	3.2
	2	Ø10	4	[Diagram]	120	340	3.5
	3	Ø10	4	[Diagram]	300	130	6.8
	4	Ø8	12	[Diagram]	108	180	2.4
	5	Ø5	33	[Diagram]	108	3544	5.4
				108x103	21.5	24.8	
				Ø5	0.0	56.0	
				Ø8	33.8	10.0	
				Ø10	27.6	10.0	
				Total	146.3	144.8	

REVISÃO 00 - 30/12/2024

1 - NÃO EXISTEM CÓRREGOS, NASCENTES OU QUALQUER OUTROS RECURSOS HÍDRICOS NO TERRENO.

2 - A EXISTÊNCIA DE POSTES, HIDRANTES, PONTOS DE ÔNIBUS, ÁRVORES OU OUTROS ELEMENTOS DO PAISAGEM PÚBLICO NÃO IMPEDEM A PLENA ACESSIBILIDADE DOS PEDESTRES E DOS ACESSOS AO IMÓVEL.

EV ARQUITETOS ASSOCIADOS

CEI AQUARELA DO SABER

PROPRIETÁRIO: LOCAL: RUA: JOÃO JOSÉ
Bairro: SANTA CRUZ
Cidade: FORQUILHINHA
Lote: QUADRA:
Loteamento: LOTEAMENTO:

MUNICÍPIO DE FORQUILHINHA
OP.: B.53/02/000-58

REPRESENTANTE TÉCNICO: ÁREA TOTAL: X,XXM²

DATA: DEZEMBRO/2024

FRANCHA: 10126

PROJETO >DET. VIGAS BALDRAME (6/8)
ESTRUTURAL >RESUMO DE AÇO