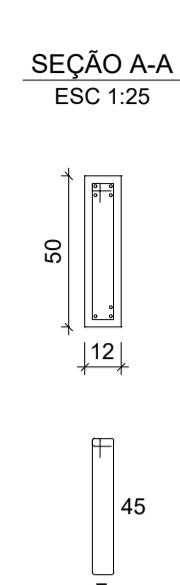
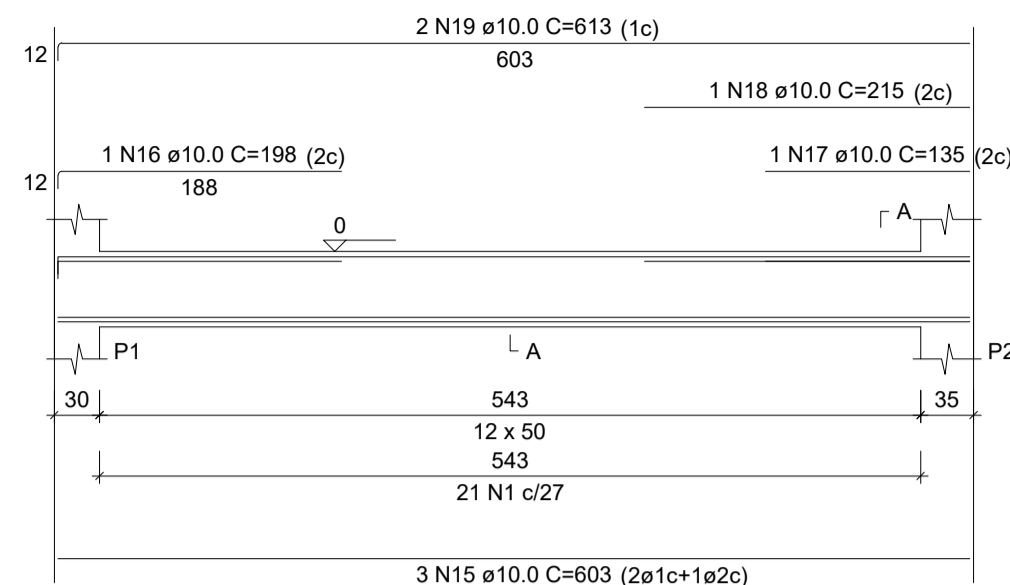
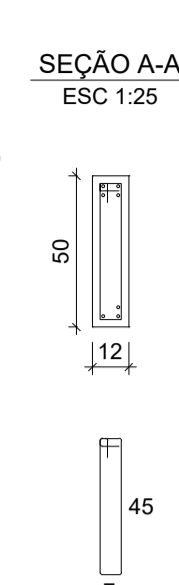
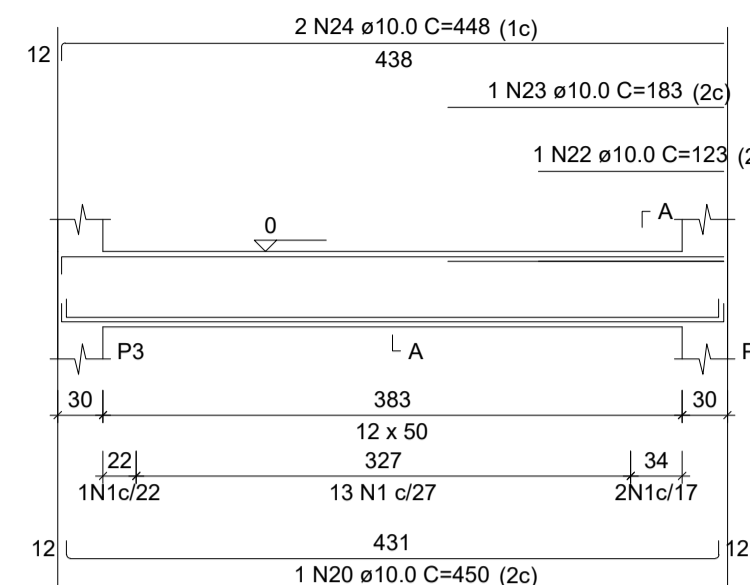


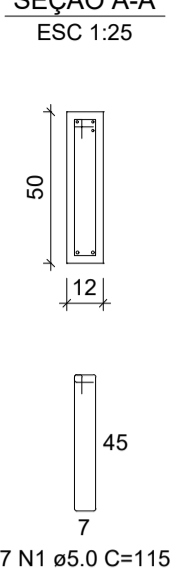
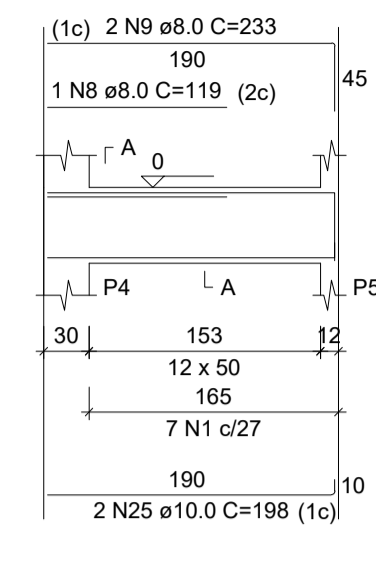
V1 ESC 1:50



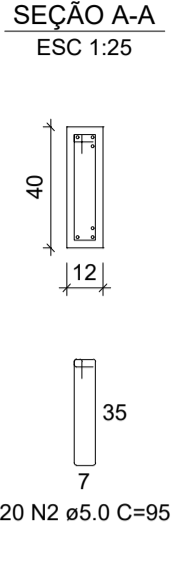
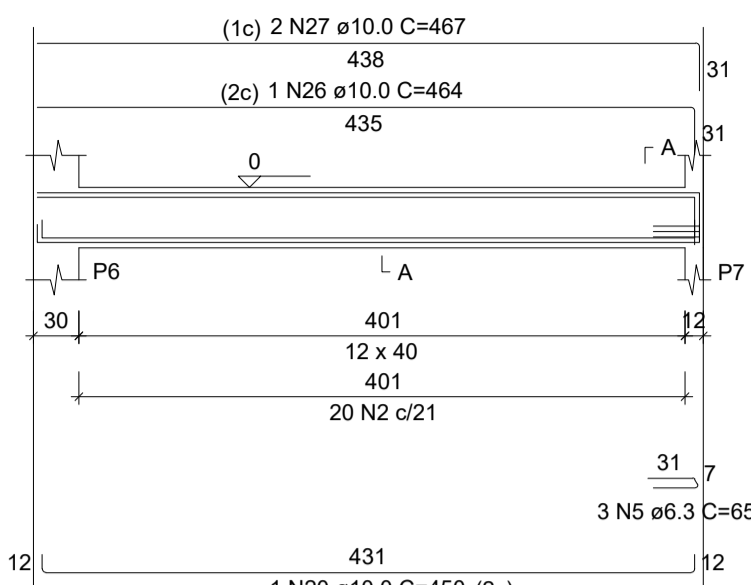
V2 ESC 1:50



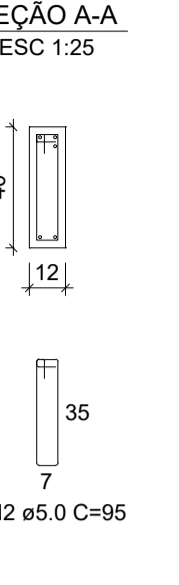
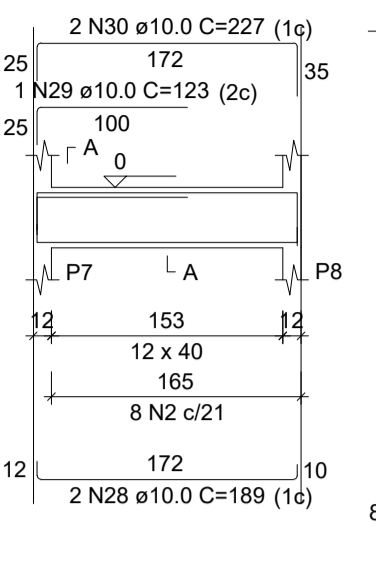
V3 ESC 1:50



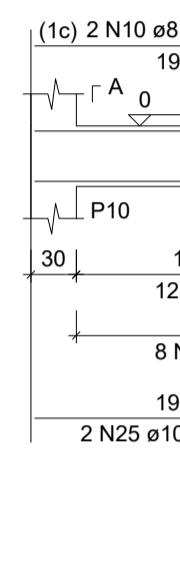
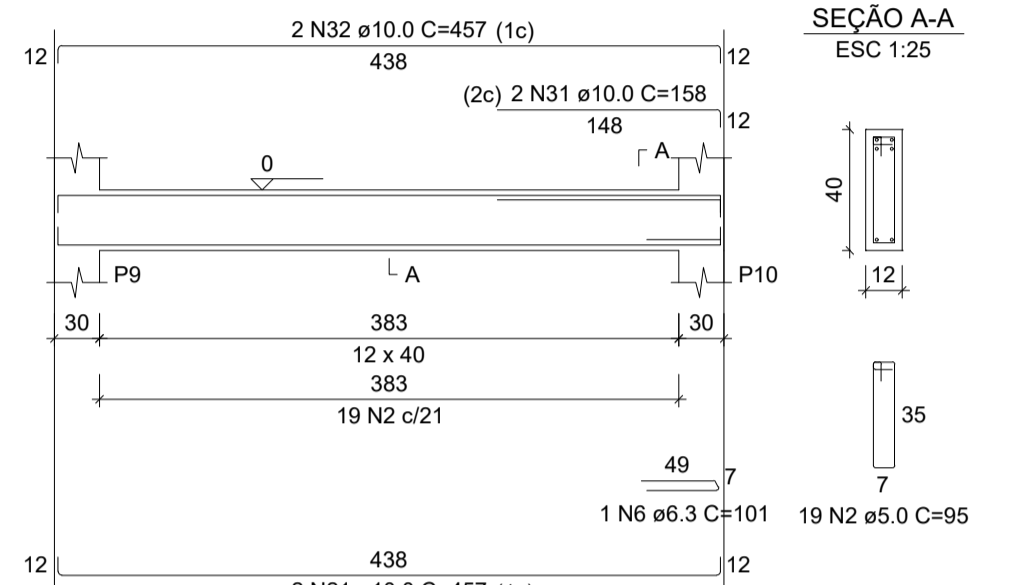
V4 ESC 1:50



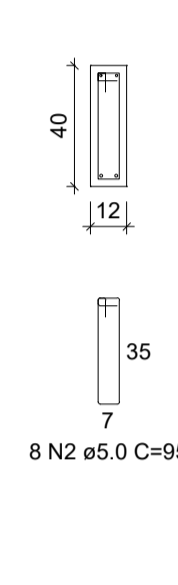
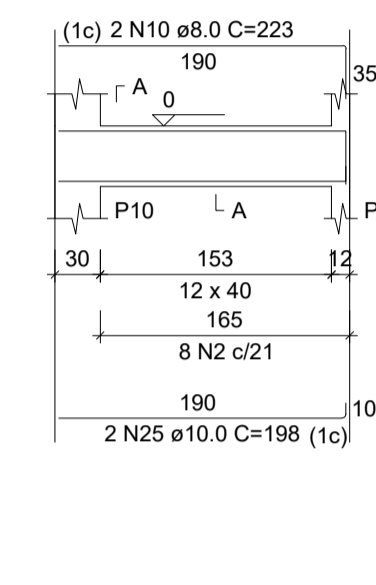
V5 ESC 1:50



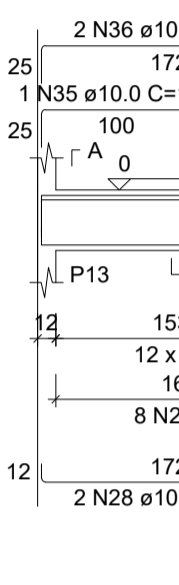
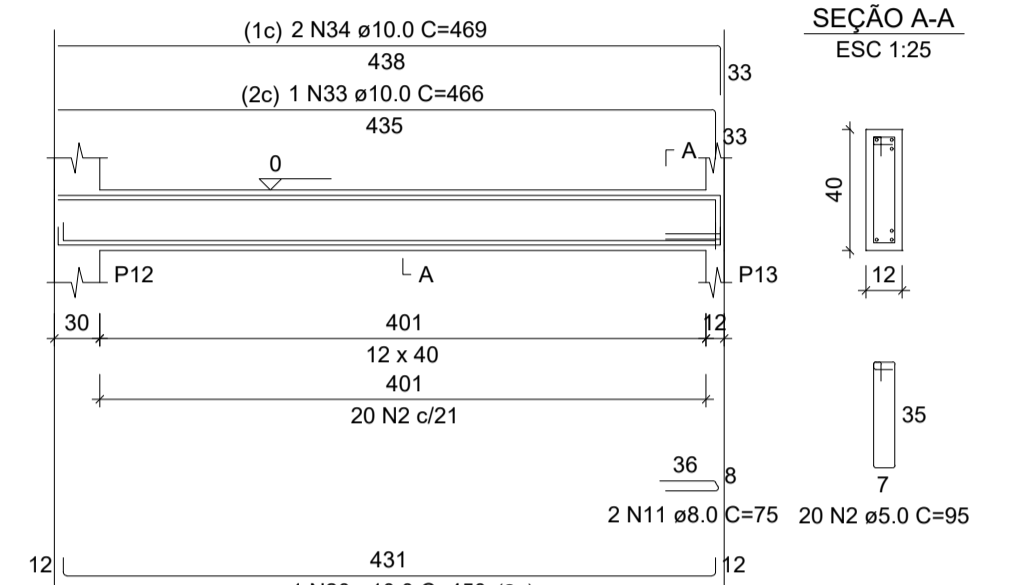
V6 ESC 1:50



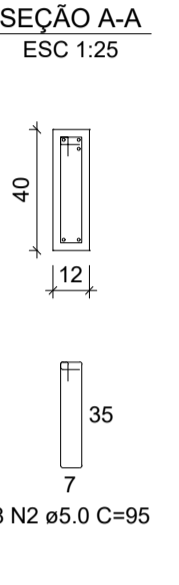
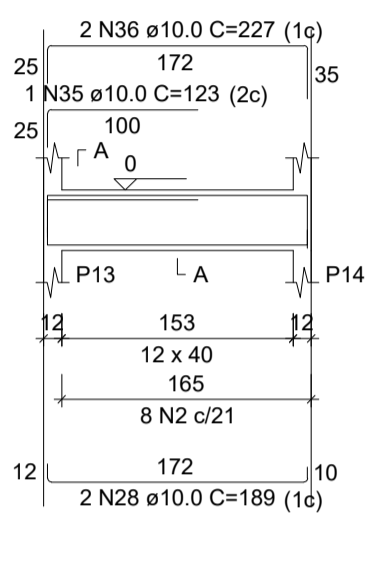
V7 ESC 1:50



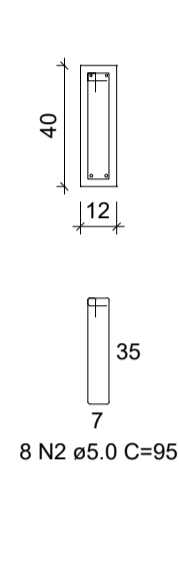
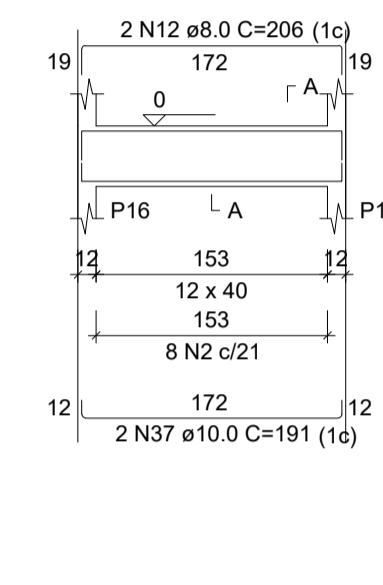
V8 ESC 1:50



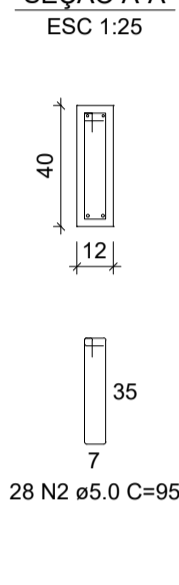
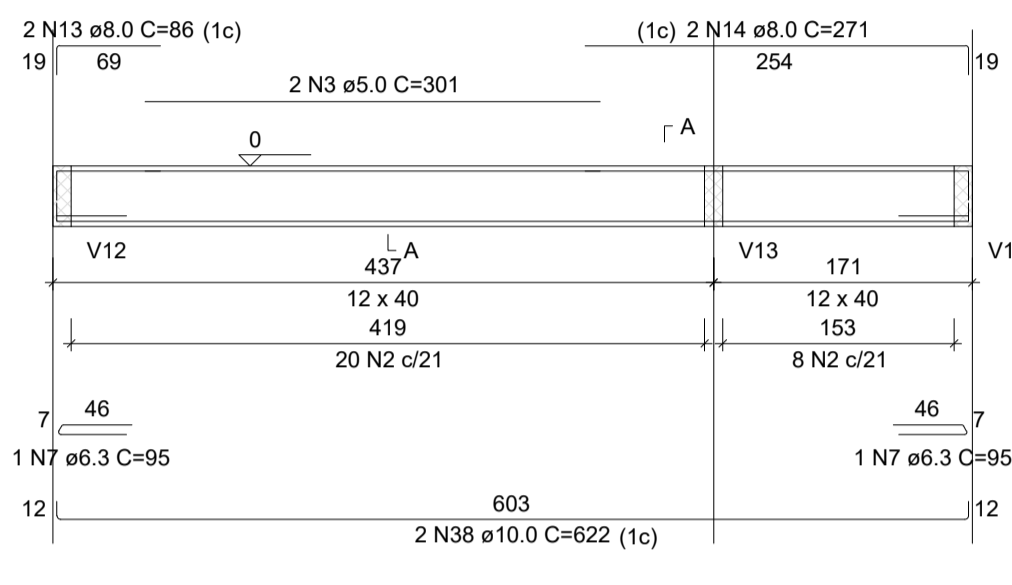
V9 ESC 1:50



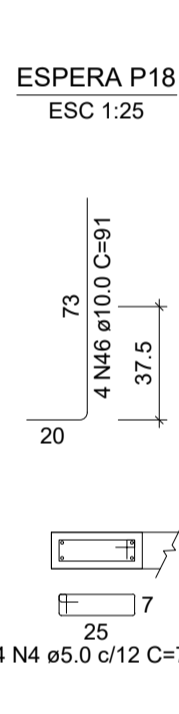
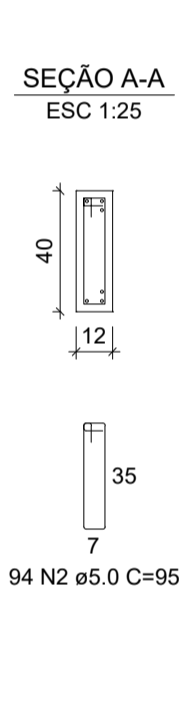
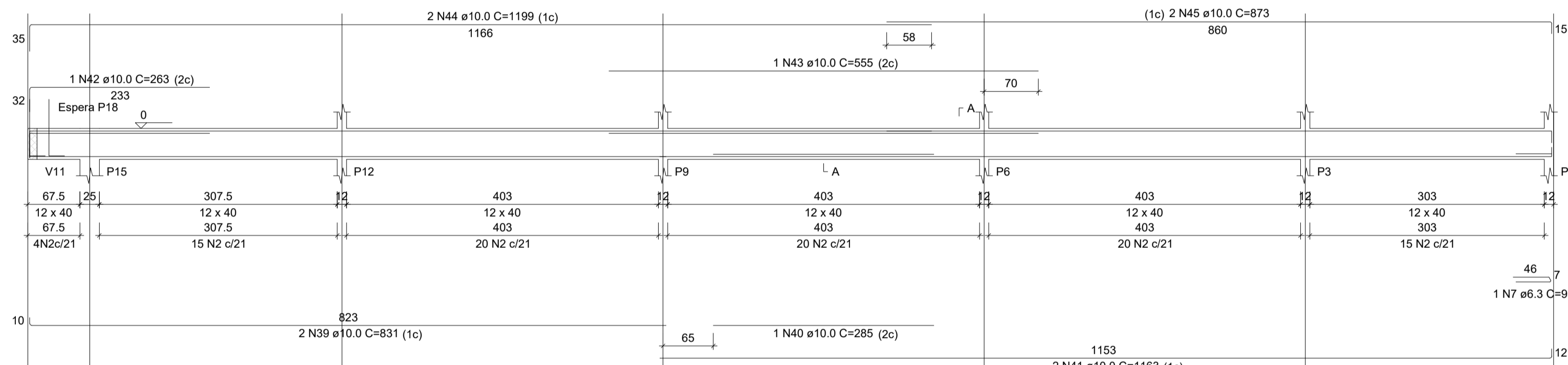
V10 ESC 1:50



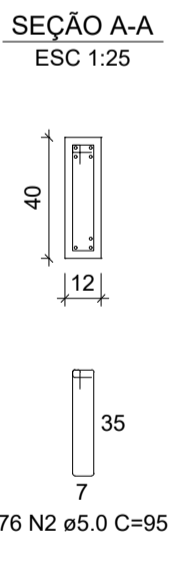
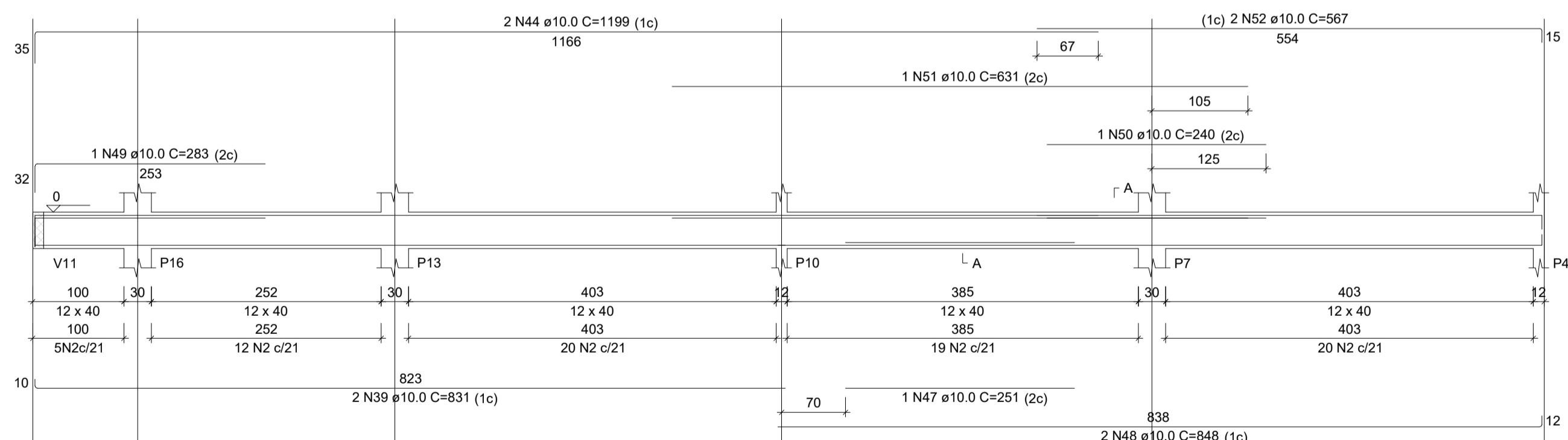
V11 ESC 1:50



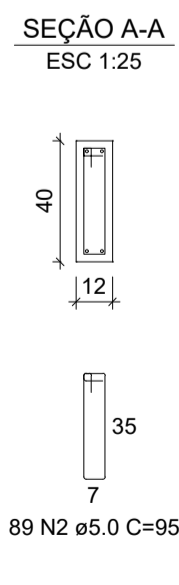
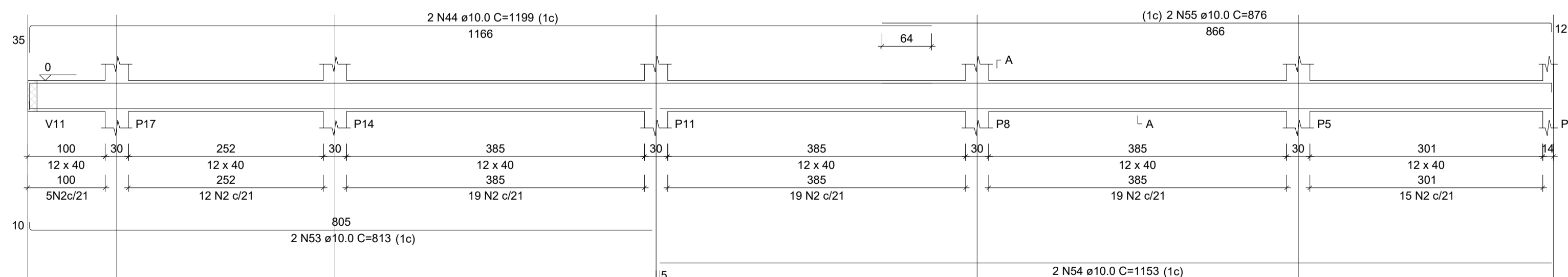
V12 ESC 1:50



V13 ESC 1:50



V14 ESC 1:50



RELAÇÃO DO AÇO

Table with columns: AÇO, N, DIAM (mm), QUANT, C.UNIT (cm), C.TOTAL (cm). Lists steel reinforcement quantities for various sections.

RESUMO DO AÇO

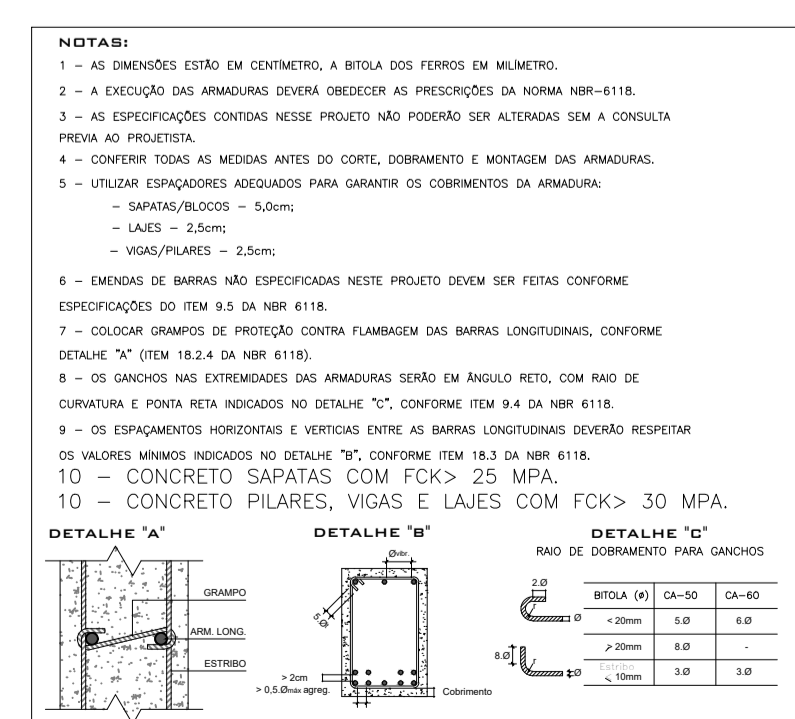
Summary table with columns: AÇO, DIAM (mm), C.TOTAL (m), QUANT +10%, PESO +10%. Shows total steel weight and quantity with 10% tolerance.

PESO TOTAL (kg) CA50 310,8 CA60 71

Volume de concreto (C-30) = 4.31 m³ Área de forma = 62.68 m²

- NOTAS: Todas as medidas devem ser confrontadas com o projeto executivo antes da execução. As dimensões estão em centímetros. Conter medidas in loco antes de pedir as vigotas. As tubulações elétricas, de comunicação e hidráulicas devem ser passadas antes da concretagem. Em caso de tubulação passando pela estrutura deve-se consultar o técnico responsável. As lajes pré-moldadas são de responsabilidade do fornecedor que deve fornecer A.R.T. Foi considerado reboco de 1,5 centímetros.

- NOTAS CONCRETAGEM: Conferir a resistência do concreto na nota do caminhão deve ser 25 MPa para sapatas e 30 MPa para demais estruturas. Deve ser utilizada somente a água especificada em nota. Não deve ser adicionado água a mais no concreto. Deve-se conferir o horário de entrega do concreto com o horário de produção na usina. Se o concreto estiver sido feito a mais de 2:30 horas o mesmo deve ser devolvido.



PROJECT STRUCTURAL FPENG // ENGENHARIA. Includes project title, company logo, and a table with fields for CONTEUDO, REVISÕES, DATAS, OBRA, ENDEREÇO, DESENHISTA, PROPRIETÁRIO DO TERRENO, PROPRIETÁRIO DA OBRA, ART DO RRT PROJETO, RESPONSÁVEL TÉCNICO PROJETO, RESPONSÁVEL TÉCNICO EXECUÇÃO, ESCALA, INDICADA, DATA, 04/11/2025, and PRANCHA: 04/05.