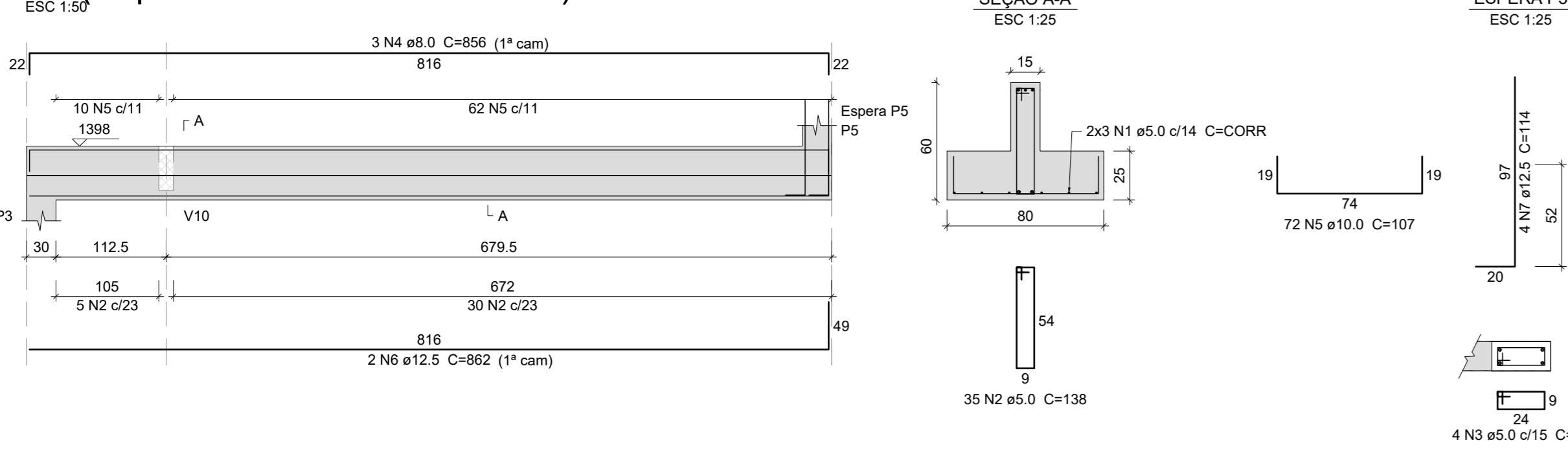
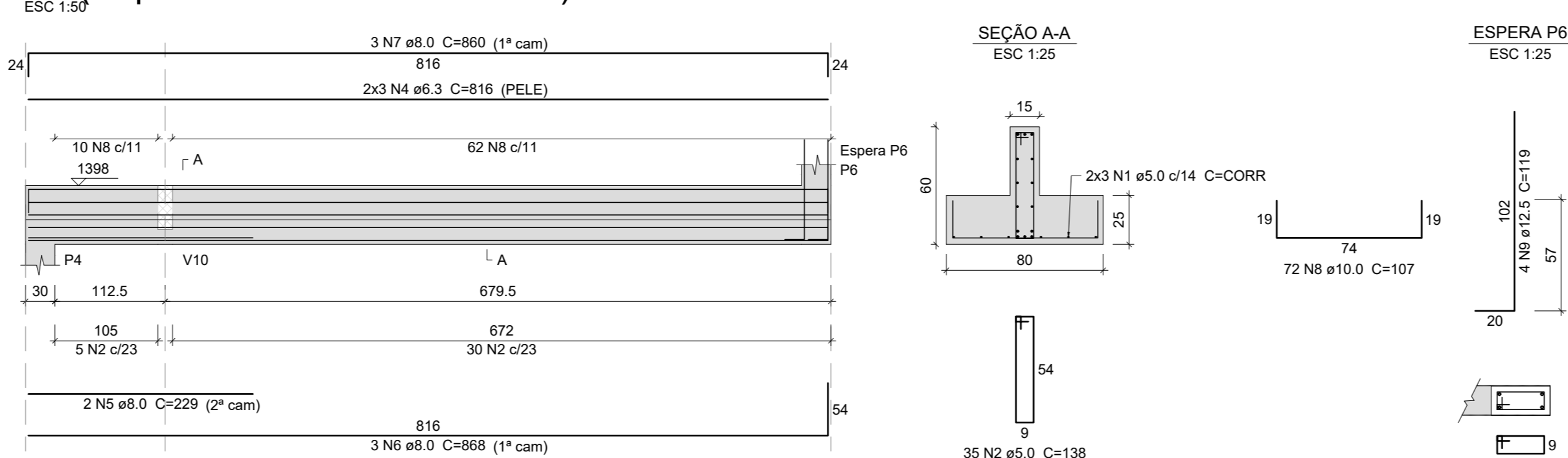


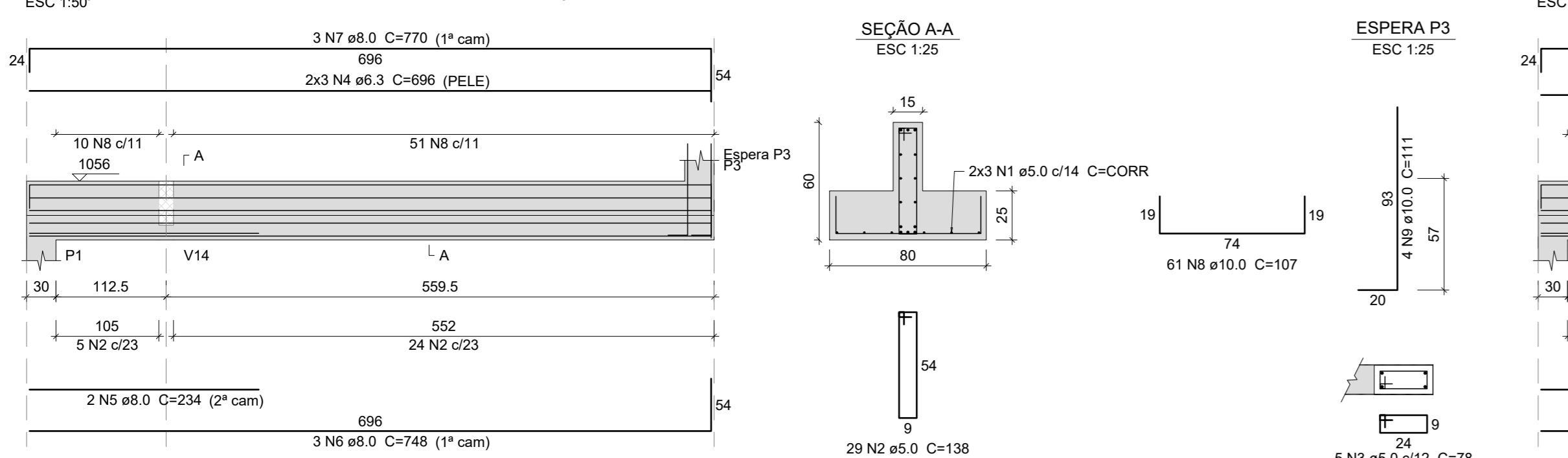
S3 (Sapata Corrida 15x55x80x25)



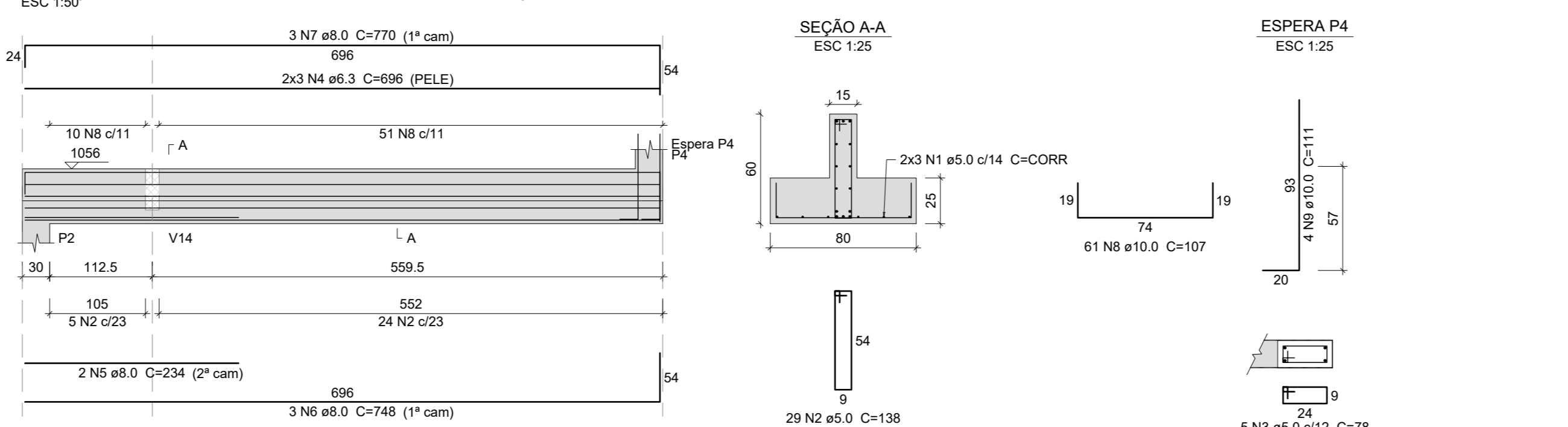
S4 (Sapata Corrida 15x60x80x25)



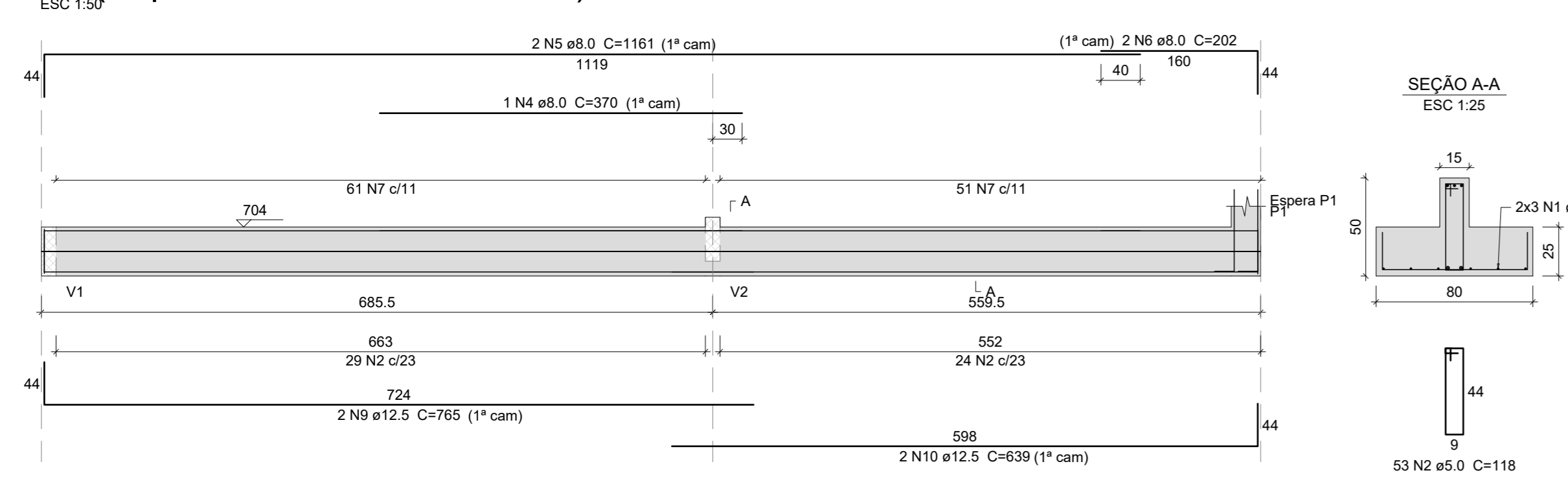
S5 (Sapata Corrida 15x60x80x25)



S6 (Sapata Corrida 15x60x80x25)



S1 (Sapata Corrida 15x50x80x25)



Relação do aço

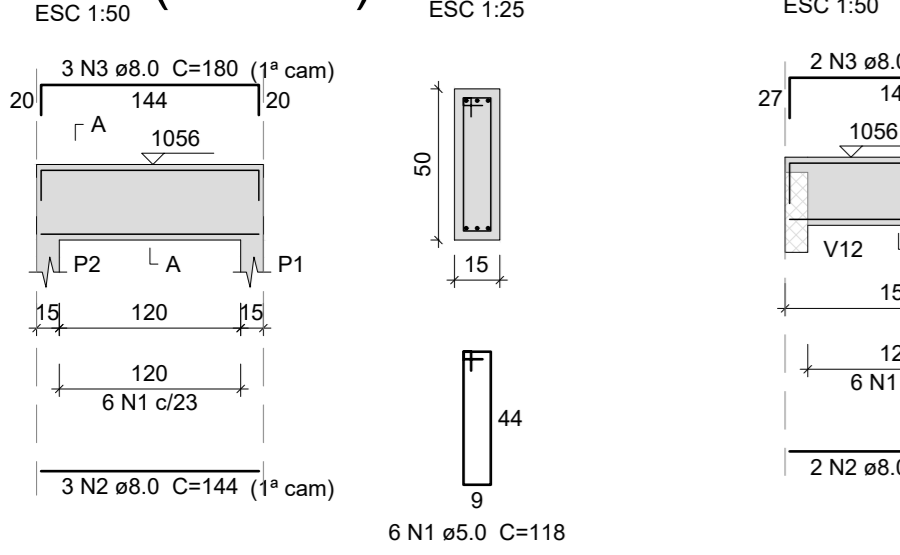
ELEMENTO	ACO	N	DIAM (mm)	QUANT	C.UNIT (cm)	C.TOTAL (cm)
Base Escada	CA60	1	5.0	6	CORR	7434
	CA60	2	5.0	53		1188
	CA60	3	5.0	4		78
	CA60	4	8.0	1		370
	CA60	5	8.0	2		370
	CA60	6	8.0	2		202
	CA60	7	10.0	112		1107
	CA60	8	10.0	4		101
	CA60	9	12.5	2		765
Topo Escada	CA60	1	5.0	6	CORR	7434
	CA60	2	5.0	53		1188
	CA60	3	5.0	4		78
	CA60	4	8.0	1		370
	CA60	5	8.0	2		370
	CA60	6	8.0	2		202
	CA60	7	10.0	112		1107
	CA60	8	10.0	4		101
	CA60	9	12.5	2		765
S3	CA60	1	5.0	6	CORR	4856
	CA60	2	5.0	35		128
	CA60	3	5.0	4		78
	CA60	4	8.0	3		856
	CA60	5	10.0	72		107
	CA60	6	12.5	2		862
	CA60	7	12.5	4		114
	CA60	8	10.0	3		868
	CA60	9	10.0	3		868
S4	CA60	1	5.0	6	CORR	4856
	CA60	2	5.0	35		128
	CA60	3	5.0	4		78
	CA60	4	8.0	3		856
	CA60	5	10.0	72		107
	CA60	6	12.5	2		862
	CA60	7	12.5	4		114
	CA60	8	10.0	3		868
	CA60	9	10.0	3		868
S5	CA60	1	5.0	6	CORR	4176
	CA60	2	5.0	29		138
	CA60	3	5.0	5		78
	CA60	4	6.3	6		696
	CA60	5	8.0	3		748
	CA60	6	8.0	3		748
	CA60	7	8.0	3		770
	CA60	8	10.0	3		770
	CA60	9	10.0	4		111
S6	CA60	1	5.0	6	CORR	4176
	CA60	2	5.0	29		138
	CA60	3	5.0	5		78
	CA60	4	6.3	6		696
	CA60	5	8.0	3		748
	CA60	6	8.0	3		748
	CA60	7	8.0	3		770
	CA60	8	10.0	3		770
	CA60	9	10.0	4		111

Resumo do aço

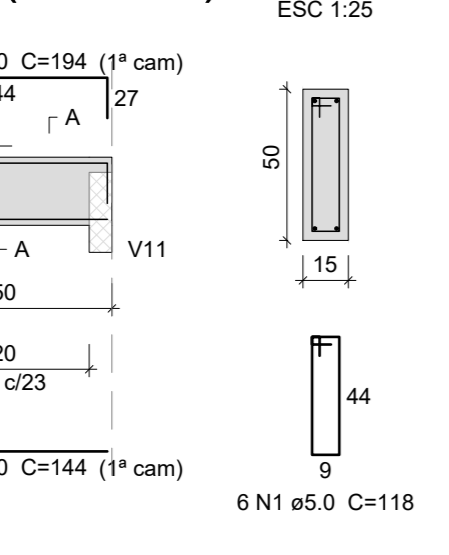
ACO	DIAM (mm)	C.TOTAL (m)	QUANT (Barras)	PESO (kg)
CA60	6.3	132.5	12	32.4
CA60	8.0	244.5	21	95.5
CA60	10.0	541.3	46	333.7
CA60	12.5	82.8	7	79.7
CA60	5.0	648.7	1	100
<b>PESO TOTAL</b>				<b>542.3</b>
CA60				<b>100</b>

Volume de concreto (C-30) = 13.55 m³  
 Área de forma = 60.85 m²

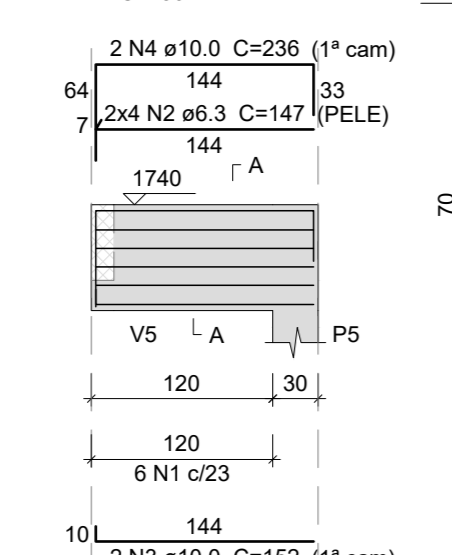
V13 (15 x 50)



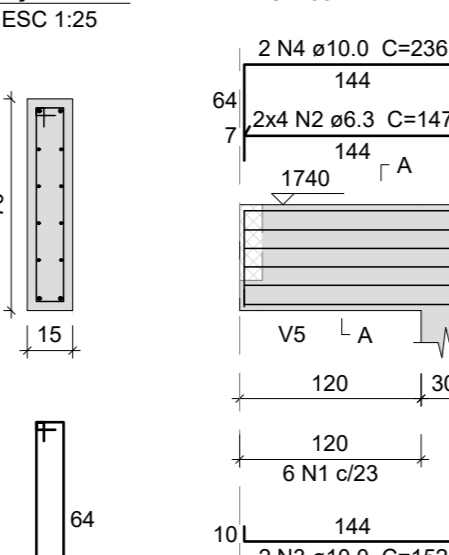
V14 (15 x 50)



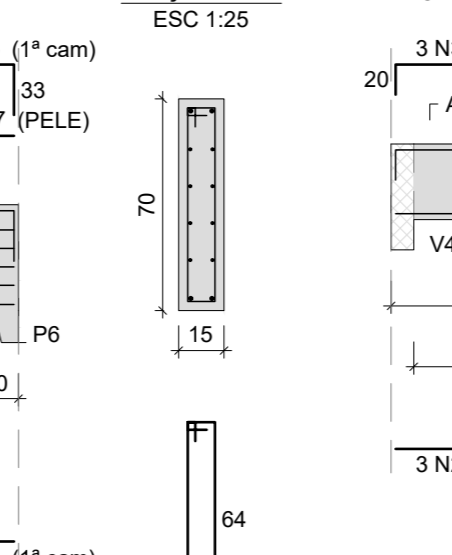
V3 (15 x 70)



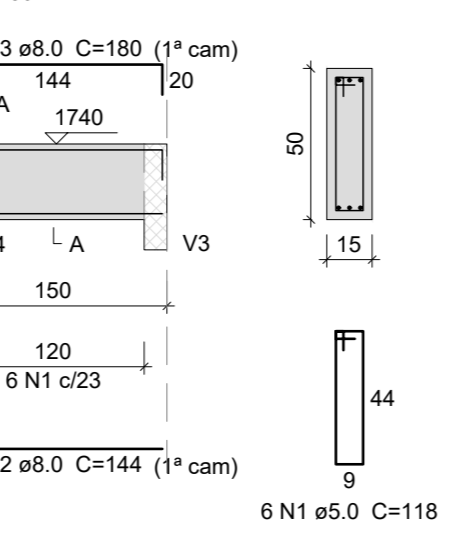
V4 (15 x 70)



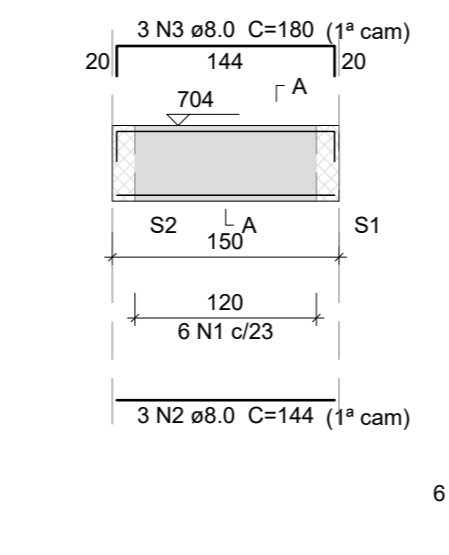
V5 (15 x 50)



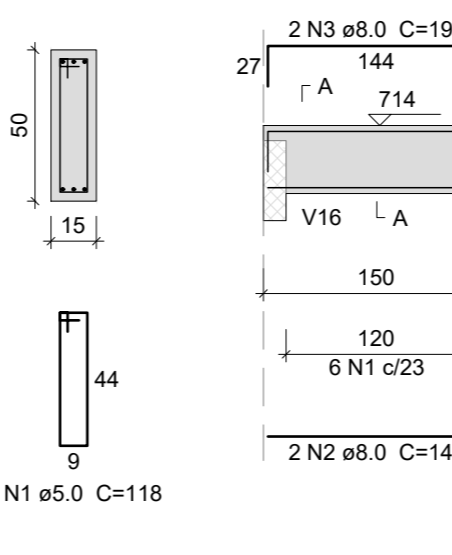
V1 (15 x 50)



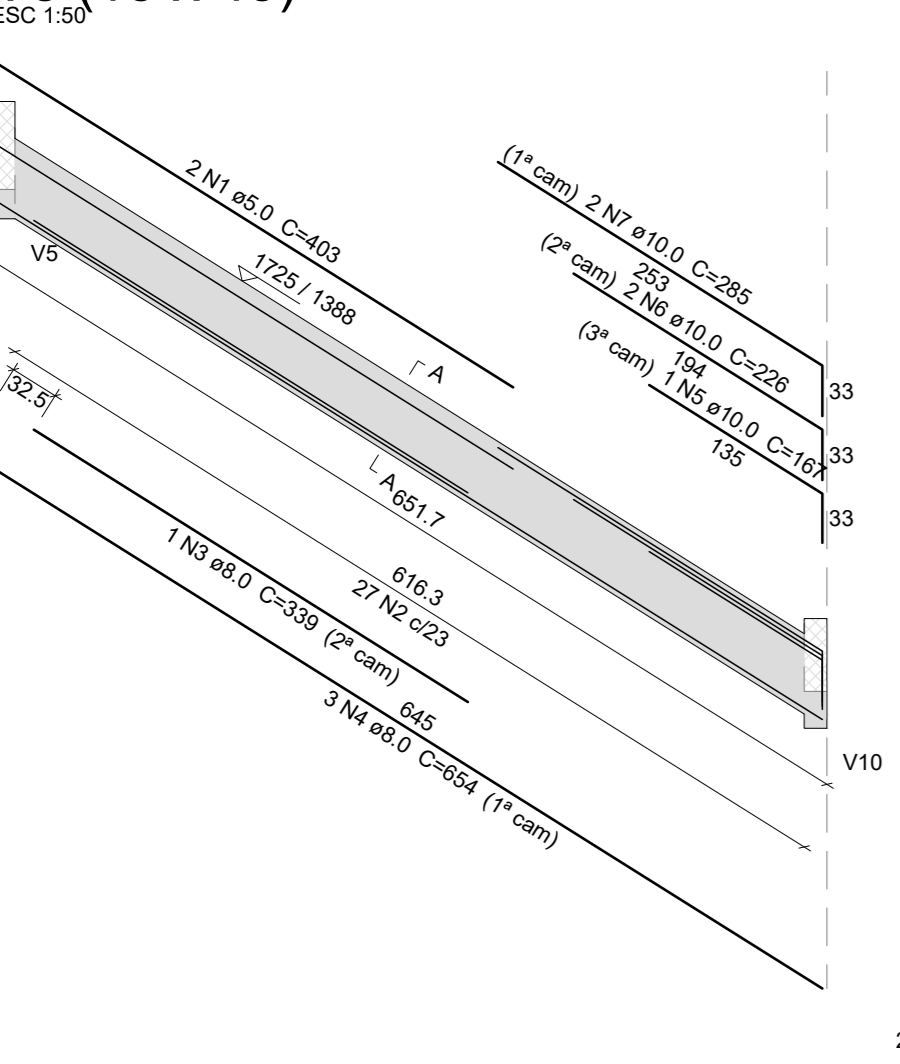
V2 (15 x 50)



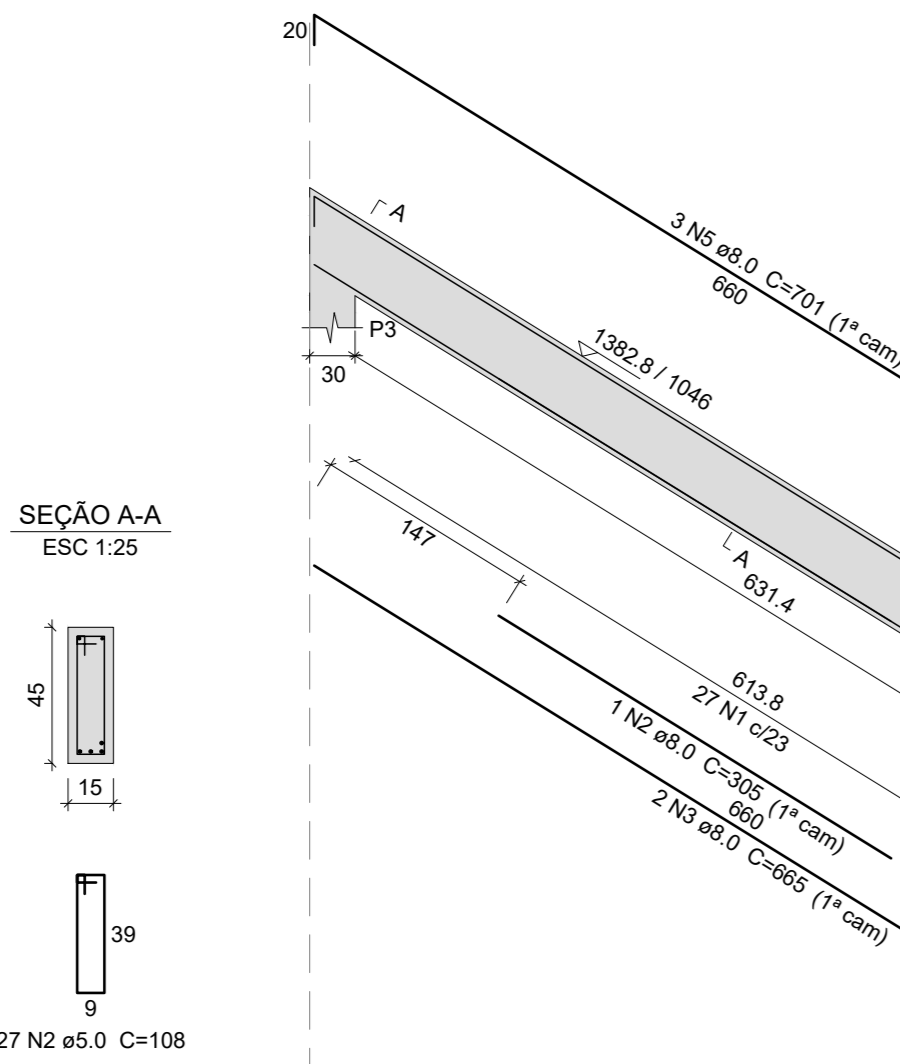
V9 (15 x 50)



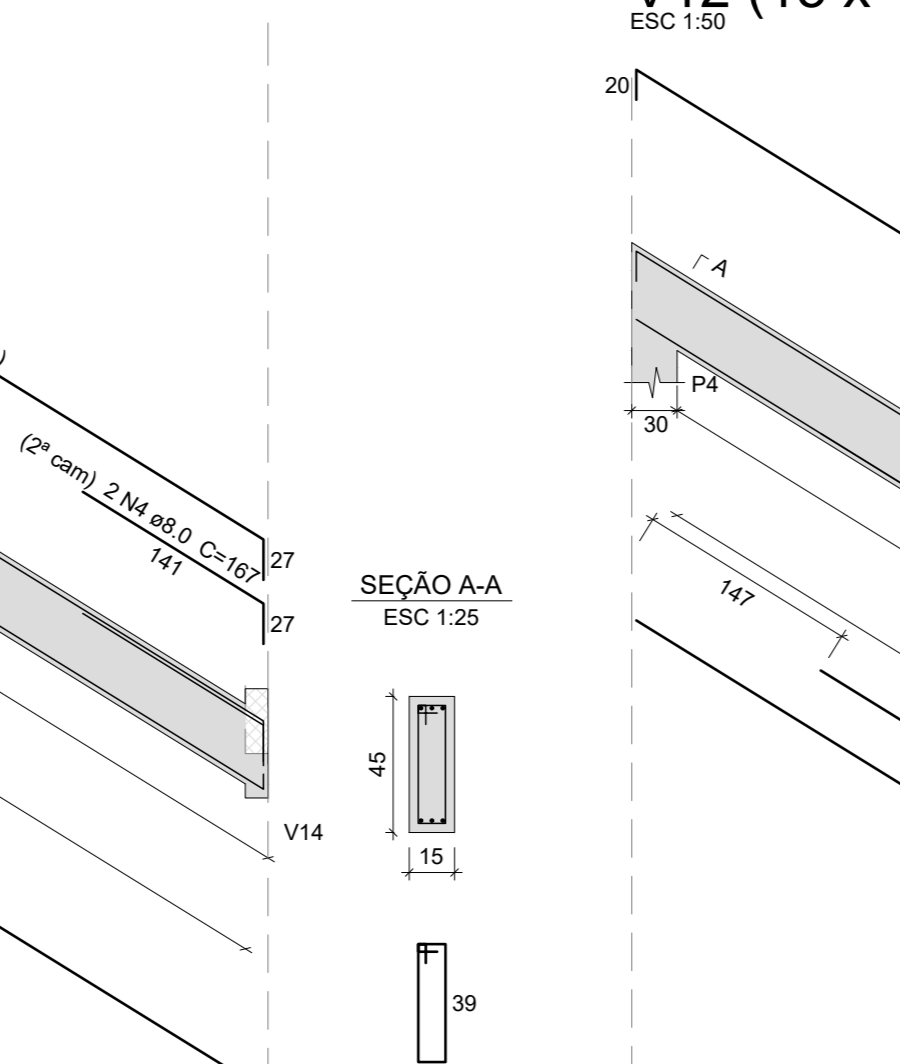
V8 (15 x 45)



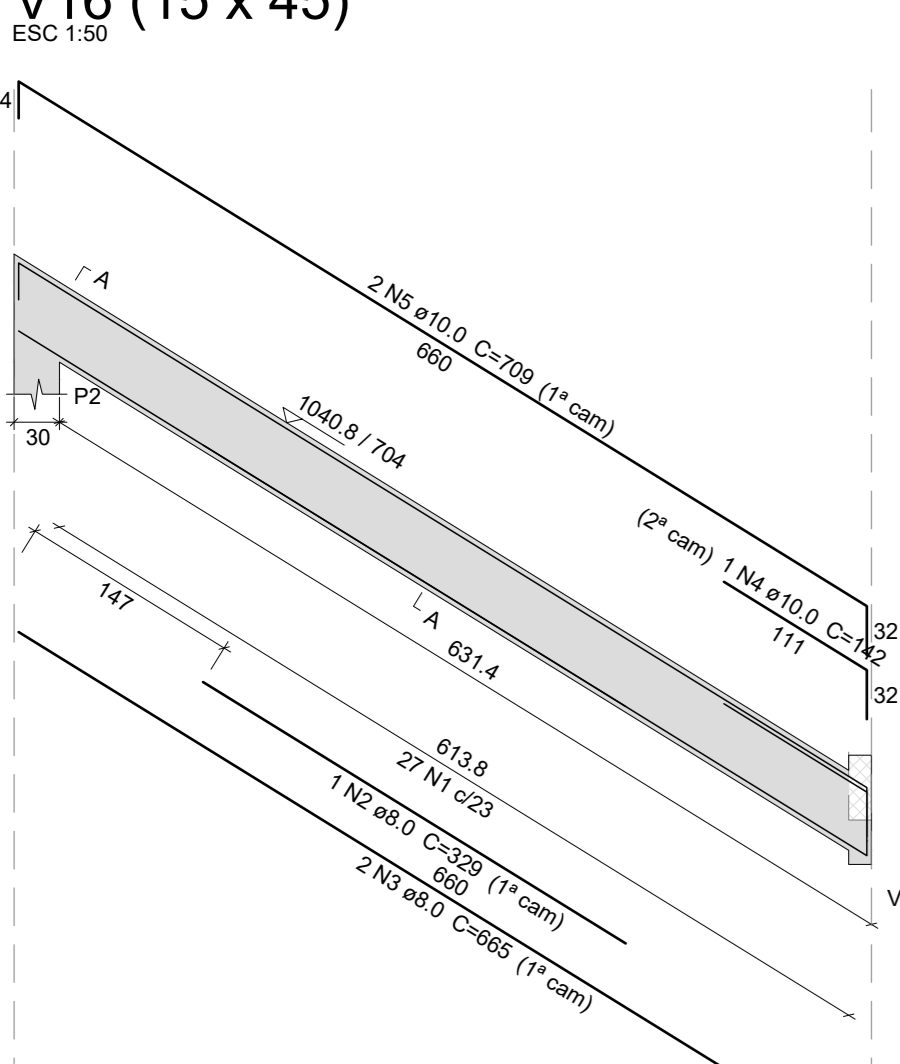
V11 (15 x 45)



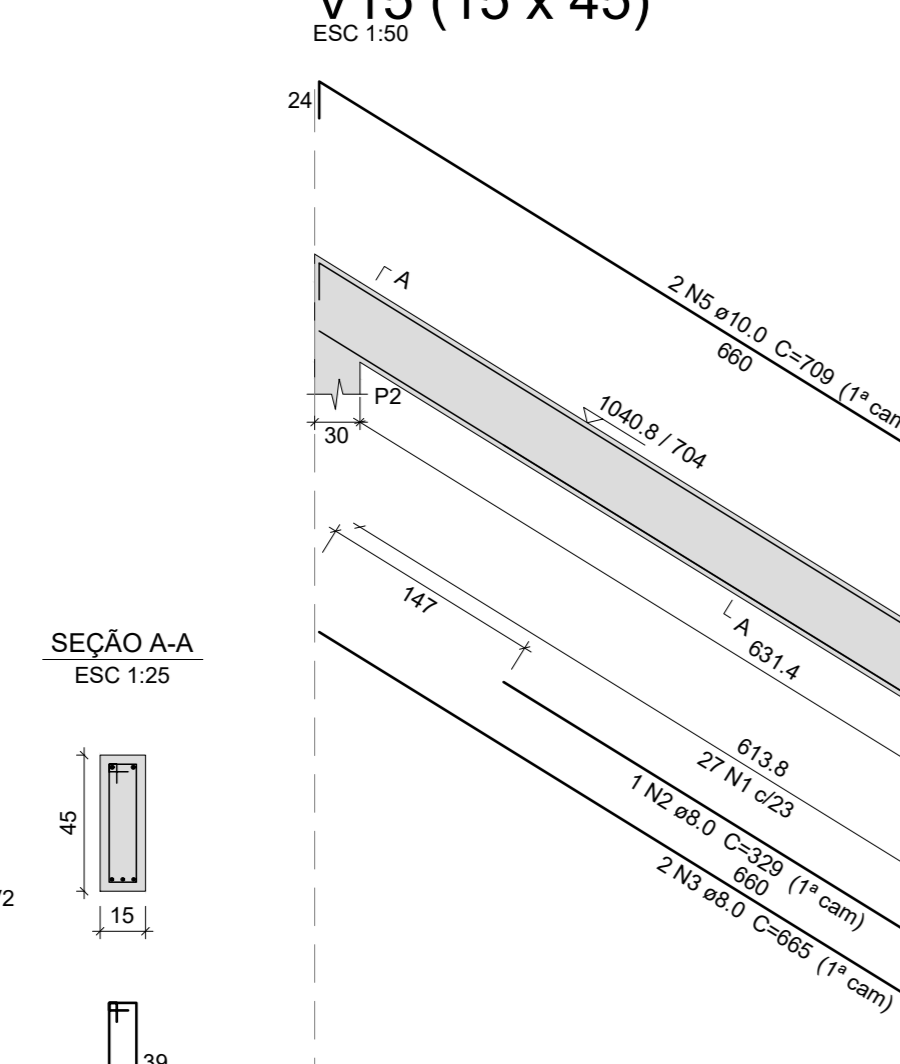
V12 (15 x 45)



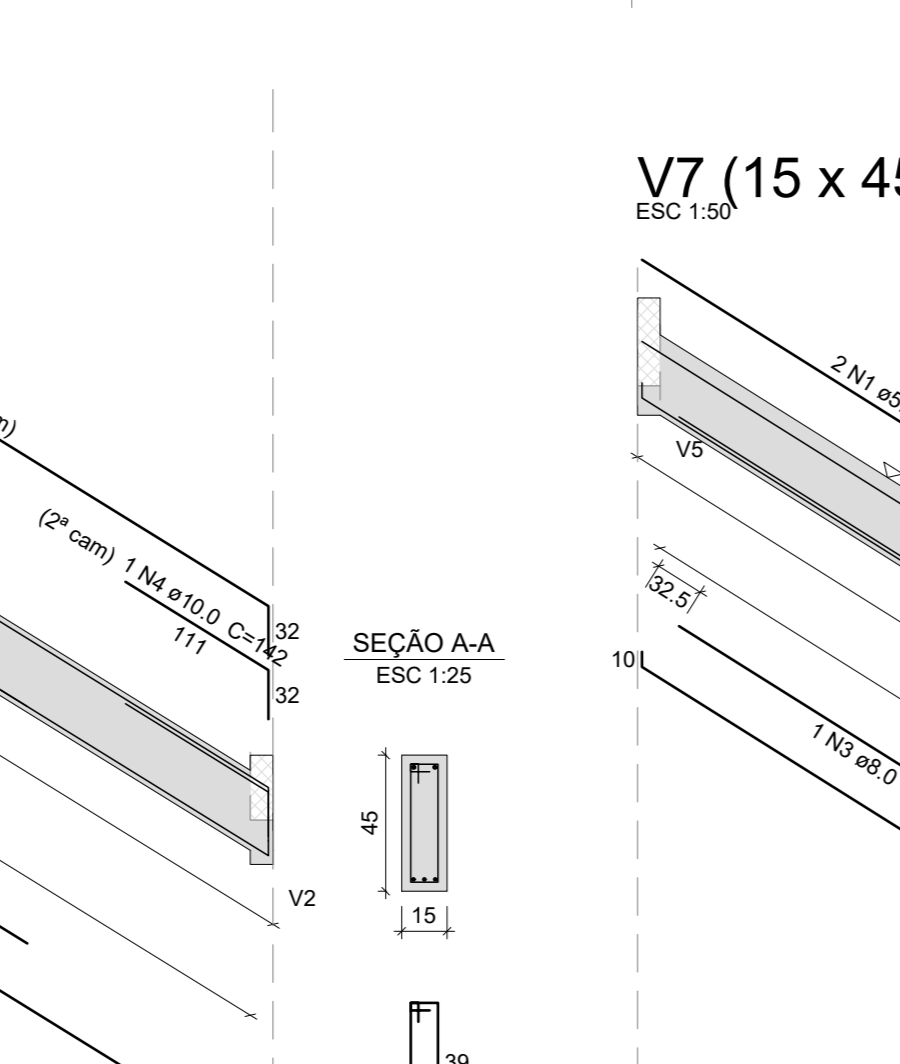
V16 (15 x 45)



V15 (15 x 45)



V7 (15 x 45)



Relação do aço

ELEMENTO	ACO	N	DIAM (mm)	QUANT	C.UNIT (cm)	C.TOTAL (cm)
Base Escada	CA60	1	5.0	6		118
	CA60	2	8.0	3		144
	CA60	3	8.0	3		180
	CA60	1	5.0	6		108
	CA60	2	8.0	2		144
	CA60	3	8.0	2		180
	CA60	1	5.0	6		158
	CA60	2	6.3	8		147
	CA60	3	10.0	2		152
Topo Escada	CA60	1	5.0	6		118
	CA60	2	8.0	3		144
	CA60	3	8.0	3		180
	CA60	1	5.0	6		108
	CA60	2	8.0	2		144
	CA60	3	8.0	2		180
	CA60	1	5.0	6		158
	CA60	2	6.3	8		147
	CA60	3	10.0	2		152
V1	CA60	1	5.0	6		118
	CA60	2	8.0	3		144
	CA60	3	8.0	3		180
	CA60	1	5.0	6		108
	CA60	2	8.0	2		144
	CA60	3	8.0	2		180
	CA60	1	5.0	6		158
	CA60	2	6.3	8		147
	CA60	3	10.0	2		152
V2	CA60	1	5.0	6		118
	CA60	2	8.0	3		144
	CA60	3	8.0	3		180
	CA60	1	5.0	6		108
	CA60	2	8.0	2		144
	CA60	3	8.0	2		180
	CA60	1	5.0	6		158
	CA60	2	6.3	8		147
	CA60	3	10.0	2		152
V3	CA60	1	5.0	6		118
	CA60	2	8.0	3		144
	CA60	3	8.0	3		180
	CA60	1	5.0	6		108
	CA60	2	8.0	2		144
	CA60	3	8.0	2		180
	CA60	1	5.0	6		158
	CA60	2	6.3	8		147
	CA60	3	10.0	2		152
V4	CA60	1	5.0	6		118
	CA60	2	8.0	3		144
	CA60	3	8.0	3		180
	CA60	1	5.0	6		108
	CA60	2	8.0	2		144
	CA60	3	8.0	2		180
	CA60	1	5.0	6		158
	CA60	2	6.3	8		147
	CA60	3	10.0	2		152
V5	CA60	1	5.0	6		118
	CA60	2	8.0	3		144
	CA60	3	8.0	3		180
	CA60	1	5.0	6		108
	CA60	2	8.0	2		144
	CA60	3	8.0	2		180
	CA60	1	5.0	6		158
	CA60	2	6.3	8		147
	CA60	3	10.0	2		152
V6	CA60	1	5.0	6		118
	CA60	2	8.0	3		144
	CA60	3	8.0	3		180
	CA60	1	5.0	6		108
	CA60	2	8.0	2		144
	CA60	3	8.0	2		180
	CA60	1	5.0	6		158
	CA60	2	6.3	8		147
	CA60	3	10.0	2		152
V7	CA60	1	5.0	6		118
	CA60	2	8.0	3		144
	CA60	3	8.0	3		180
	CA60	1	5.0	6		108
	CA60	2	8.0	2		144
	CA60	3	8.0	2		180
	CA60	1	5.0	6		158
	CA60	2	6.3	8		147
	CA60	3	10.0	2		152
V8	CA60	1	5.0	6		118
	CA60	2	8.0	3		144
	CA60	3	8.0	3		180
	CA60	1	5.0	6		108
	CA60	2	8.0	2		144
	CA60	3	8.0	2		180
	CA60	1	5.0	6		158
	CA60	2	6.3	8		147
	CA60	3	10.0	2		152
V9	CA60	1	5.0	6		118
	CA60	2	8.0	3		144
	CA60	3	8.0	3		180
	CA60	1	5.0	6		108
	CA60	2	8.0	2		144
	CA60	3	8.0	2		180
	CA60	1	5.0	6		158
	CA60	2	6.3	8		147
	CA60	3	10.0	2		152
V10	CA60	1	5.0	6		118
	CA60	2	8.0	3		144
	CA60	3	8.0	3		180
	CA60	1	5.0	6		108
	CA60	2	8.0	2		144
	CA60	3	8.0	2		180
	CA60	1	5.0	6		158
	CA60	2	6.3	8		147
	CA60	3	10.0	2		152
V11	CA60	1	5.0	6		118
	CA60	2	8.0	3		144
	CA60	3	8.0	3		180
	CA60	1	5.0	6		108
	CA60	2	8.0	2		144
	CA60	3	8.0	2		180
	CA60	1	5.0	6		158
	CA60	2	6.3	8		147
	CA60	3	10.0	2		152
V12	CA60	1	5.0	6		118
	CA60	2	8.0	3		144
	CA60	3				