

## MEMORIAL DESCRITIVO

**Proprietário:** Estado de Santa Catarina - CNPJ: 82.951.229/0001-76

**Endereço:** Rua Lauro Linhares, nº 6.050, Trindade, Florianópolis/SC

**Sistema Geodésico de Referência:** SIRGAS2000

**Projeção Cartográfica de Distância e Área:** UTM gua

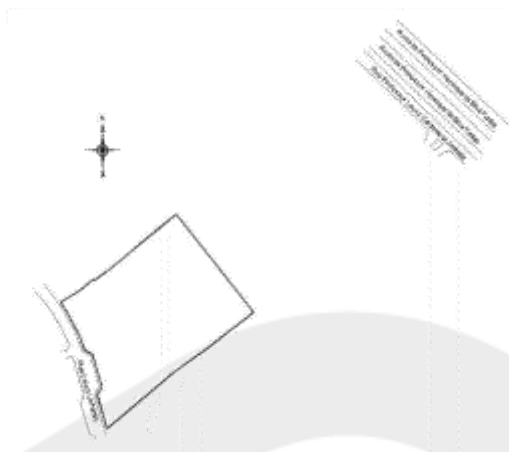
**Matrícula nº 34.947 - CNS 10.442-2 - 2º ORI Florianópolis/SC**

**Área Total:** 11.866,73m<sup>2</sup>

**Perímetro:** 463,85m

Vértice	Latitude	Longitude	Coord. E	Coord. N	Confrontante a vante	Distância a vante (m)
1	27°35'22,13994" S	48°31'20,23919" O	744575,6435	6945821,1576	Rua Lauro Linhares	27,21
2	27°35'21,29541" S	48°31'20,53115" O	744568,1563	6945847,3176		7,17
3	27°35'21,09328" S	48°31'20,40129" O	744571,8430	6945853,4687		26,05
4	27°35'20,28566" S	48°31'20,68447" O	744564,5737	6945878,4875		6,84
5	27°35'20,18603" S	48°31'20,90721" O	744558,5254	6945881,6771		13,66
6	27°35'19,77315" S	48°31'21,08950" O	744553,7800	6945894,4881		19,44
7	27°35'19,22370" S	48°31'21,43872" O	744544,5400	6945911,5952		8,72
8	27°35'18,99075" S	48°31'21,61933" O	744539,7298	6945918,8660	Brognoli Imóveis Ltda.	14,70
9	27°35'18,73529" S	48°31'21,16668" O	744552,3033	6945926,4816		4,61
10	27°35'18,64660" S	48°31'21,03131" O	744556,0713	6945929,1377	Edifício Iguaçu	11,65
11	27°35'18,40282" S	48°31'20,70670" O	744565,1254	6945936,4640	Nisa Linhares Lopes	1,01
12	27°35'18,42514" S	48°31'20,67958" O	744565,8555	6945935,7621		10,84
13	27°35'18,21379" S	48°31'20,36361" O	744574,6528	6945942,0949	Ana Saladine de Menezes	13,21
14	27°35'17,94232" S	48°31'19,99056" O	744585,0529	6945950,2471	Rosemary Pires Ferreira de Lima	11,58
15	27°35'17,69750" S	48°31'19,67006" O	744593,9951	6945957,6080	Roselene Pires Vardanga	12,51
16	27°35'17,42746" S	48°31'19,32952" O	744603,5028	6945965,7339	Ada da Conceição Vieira	11,80
17	27°35'17,17497" S	48°31'19,00598" O	744612,5333	6945973,3293	Dec. do Brasil Ind. e Com. Ltda.	12,02
18	27°35'16,92498" S	48°31'18,66937" O	744621,9205	6945980,8402	Maurício Prazeres	9,56
19	27°35'16,72439" S	48°31'18,40320" O	744629,3452	6945986,8691	Matrícula nº 19.449 CNS: 10.442-2	96,33
56	27°35'19,14017" S	48°31'16,17210" O	744689,0527	6945911,2713	João Camerino Silva Furtado	7,59
57	27°35'19,29871" S	48°31'16,38385" O	744683,1466	6945906,5069	Marcel Vilmar da Silva	9,00
58	27°35'19,48296" S	48°31'16,63838" O	744676,0512	6945900,9747	Vilmar Teodoro da Silva	8,98
59	27°35'19,66549" S	48°31'16,89379" O	744668,9329	6945895,4957	Baviera Residence CNPJ: 46.309.820/0001-60	19,01
60	27°35'20,05495" S	48°31'17,43127" O	744653,9495	6945883,8016		33,38
61	27°35'20,70221" S	48°31'18,40731" O	744626,7780	6945864,4119	Francisco Carlos Lajus	14,01
62	27°35'21,00875" S	48°31'18,78472" O	744616,2367	6945855,1826	Condomínio Edifício Coimbra CNPJ: 85.346.609/0001-70	52,97

Croqui:



**Matrícula nº 19.449 - CNS 10.442-2 - 2º ORI Florianópolis/SC**

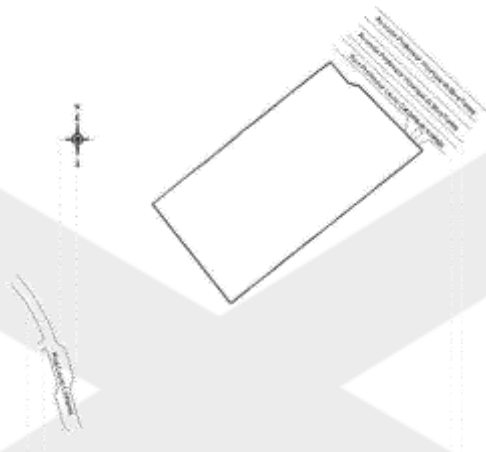
**Área Total: 17.493,36m<sup>2</sup>**

**- Perímetro: 556,33**

Vértice	Latitude	Longitude	Coord. E	Coord. N	Confrontante a vante	Distância a vante (m)
35	27°35'13,11471" S	48°31'13,53359" O	744765,1459	6946095,3173	Rua Professor Lauro Caldeira de Andrada	21,95
36	27°35'13,64775" S	48°31'13,00244" O	744779,3863	6946078,6151		7,74
37	27°35'13,70054" S	48°31'12,72654" O	744786,9216	6946076,8384		69,04
38	27°35'15,26414" S	48°31'10,92274" O	744835,4343	6946027,7094	Área Verde de Lazer	21,13
39	27°35'15,70282" S	48°31'11,51488" O	744818,9211	6946014,5302	Edifício Savannah	17,70
40	27°35'16,07037" S	48°31'12,01090" O	744805,0882	6946003,4881	Área Verde de Lazer	12,00
41	27°35'16,32045" S	48°31'12,34636" O	744795,7324	6945995,9736	Inês de Jesus Vasconcelos	8,94
42	27°35'16,50826" S	48°31'12,59498" O	744788,7967	6945990,3286	Vilson Martins Pires	8,96
43	27°35'16,69102" S	48°31'12,84891" O	744781,7187	6945984,8418	Espólio de Pedro José Xavier	9,20
44	27°35'16,88345" S	48°31'13,10565" O	744774,5574	6945979,0592	Luiz Fernando Schiller	8,90
45	27°35'17,06789" S	48°31'13,35565" O	744767,5863	6945973,5186	Murilo Pereira	9,03
46	27°35'17,25455" S	48°31'13,60948" O	744760,5085	6945967,9118	André Mauro Wurzius	9,05
47	27°35'17,44110" S	48°31'13,86432" O	744753,4032	6945962,3089	Adalva Alice da Cunha	9,07
48	27°35'17,62882" S	48°31'14,11899" O	744746,3017	6945956,6697	Lélio Lopes Baron	9,10
49	27°35'17,81620" S	48°31'14,37530" O	744739,1556	6945951,0422	Oscar João Vascques	9,25
50	27°35'18,00660" S	48°31'14,63589" O	744731,8901	6945945,3239	Nelir Bernanda Gelhen	8,93
51	27°35'18,19379" S	48°31'14,88462" O	744724,9519	6945939,6979	Jair Silveira	8,89
52	27°35'18,37706" S	48°31'15,13501" O	744717,9707	6945934,1935	Lurene Fernandes Geraldo	12,52
53	27°35'18,63524" S	48°31'15,48754" O	744708,1415	6945926,4393	Cezar Teixeira	10,76
54	27°35'18,85708" S	48°31'15,79045" O	744699,6960	6945919,7763	Prefeitura Municipal de Florianópolis	12,26
55	27°35'19,11177" S	48°31'16,13417" O	744690,1105	6945912,1246	João Camerino Silva Furtado	1,36
56	27°35'19,14017" S	48°31'16,17210" O	744689,0527	6945911,2713	Matrícula nº 34.947 CNS: 10.442-2	96,33

19	27°35'16,72439" S	48°31'18,40320" O	744629,3452	6945986,8691	Maurício Prazeres	1,84
20	27°35'16,68589" S	48°31'18,35211" O	744630,7703	6945988,0264		13,73
21	27°35'16,39752" S	48°31'17,97029" O	744641,4216	6945996,6942	Rua Professor Odilon Fernandes	10,31
22	27°35'16,18293" S	48°31'17,68182" O	744649,4667	6946003,1416	Walter Luiz Rausch	12,59
23	27°35'15,92133" S	48°31'17,32917" O	744659,3012	6946011,0013	Eduardo Sobrosa	12,08
24	27°35'15,67542" S	48°31'16,98602" O	744668,8655	6946018,3833	Odemar de Andrade	11,55
25	27°35'15,43528" S	48°31'16,66257" O	744677,8859	6946025,5981	Targino Manoel Nunes	12,25
26	27°35'15,17951" S	48°31'16,32061" O	744687,4237	6946033,2843	Maria dos Prazeres Oliveira	11,47
27	27°35'14,93899" S	48°31'16,00150" O	744696,3254	6946040,5131		0,42
28	27°35'14,92835" S	48°31'16,01129" O	744696,0634	6946040,8460	Idelfonso Cerutti Rozzatti	12,19
29	27°35'14,67909" S	48°31'15,66630" O	744705,6801	6946048,3301	Neci Vaz Goulart	12,05
30	27°35'14,42981" S	48°31'15,32754" O	744715,1261	6946055,8180	Vania Mara Volpato Goulart	12,08
31	27°35'14,18047" S	48°31'14,98778" O	744724,5998	6946063,3071	Osni Miguel Lacerda	12,03
32	27°35'13,92882" S	48°31'14,65231" O	744733,9570	6946070,8700	Paulo Roberto Cardoso	11,80
33	27°35'13,68604" S	48°31'14,31971" O	744743,2300	6946078,1611		12,00
34	27°35'13,43971" S	48°31'13,98077" O	744752,6791	6946085,5580		15,83

#### Croqui:



Atesto, sob as penas da lei, que efetuei o Levantamento Topográfico Planimétrico Cadastral do imóvel e que os dados aqui apresentados em memorial descritivo e planta topográfica que o acompanha são verdadeiros.

Paulo Lopes/SC, 17 de novembro de 2023.

Hamilton Caminha de Azevedo Jr  
**Técnico em Agrimensura**  
 CFT-BR nº 0423979892-2  
 TRT nº CFT2303035451