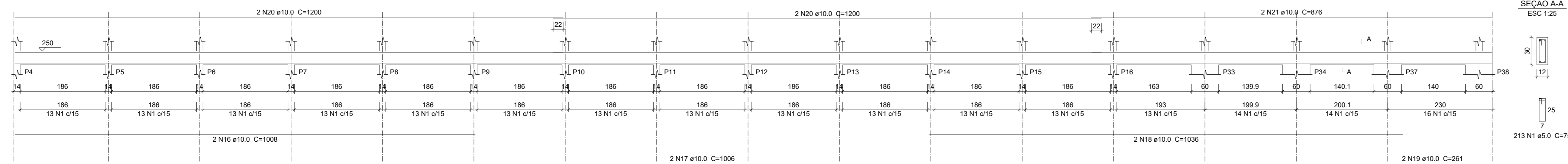
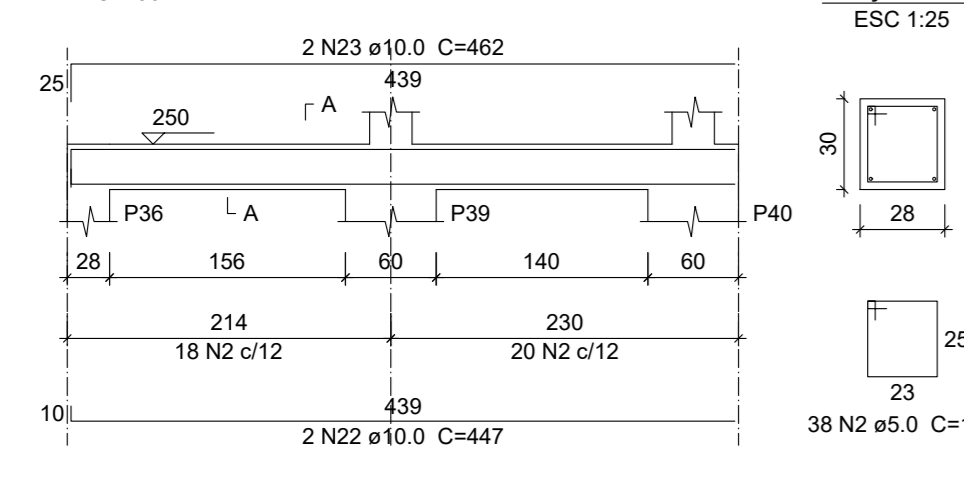


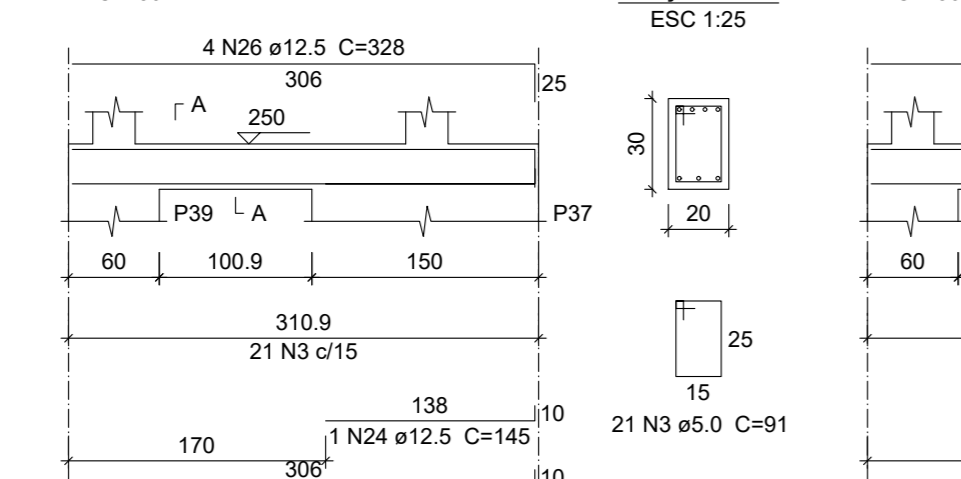
VII-2 (12 x 30)
ESC 1:50



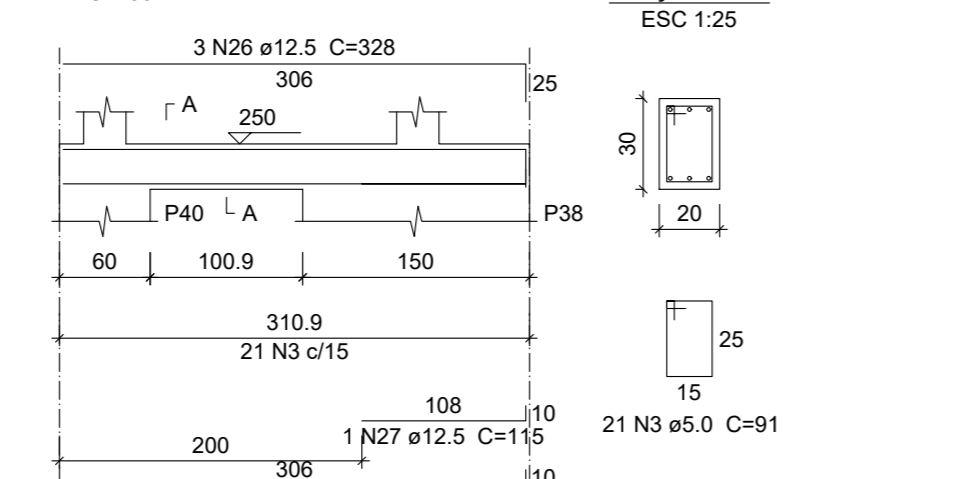
VII-3 (28 x 30)
ESC 1:50



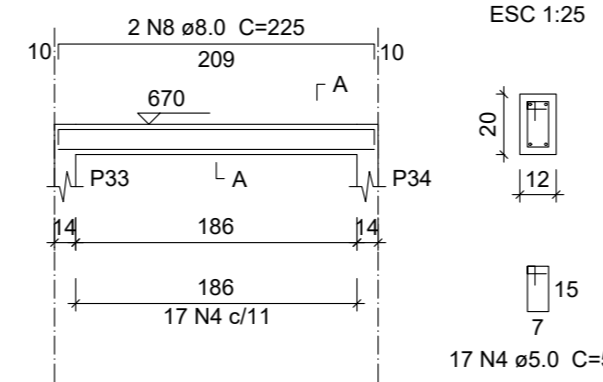
VII-4 (20 x 30)
ESC 1:50



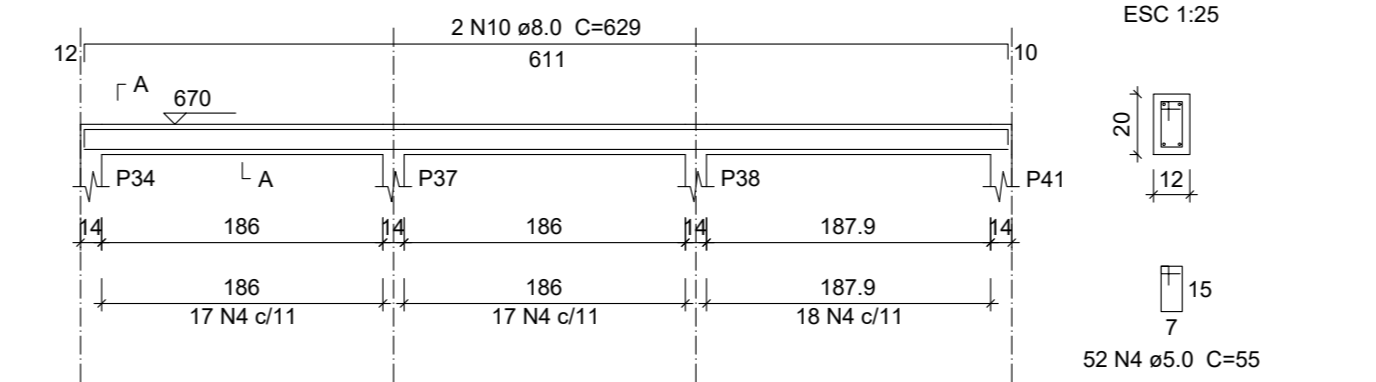
VII-5 (20 x 30)
ESC 1:50



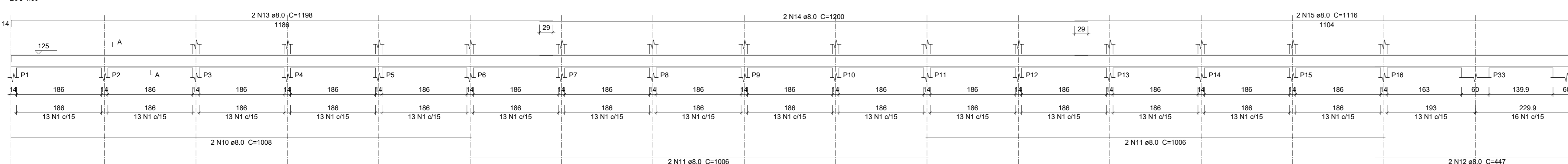
VIV-1 (12 x 20)
ESC 1:50



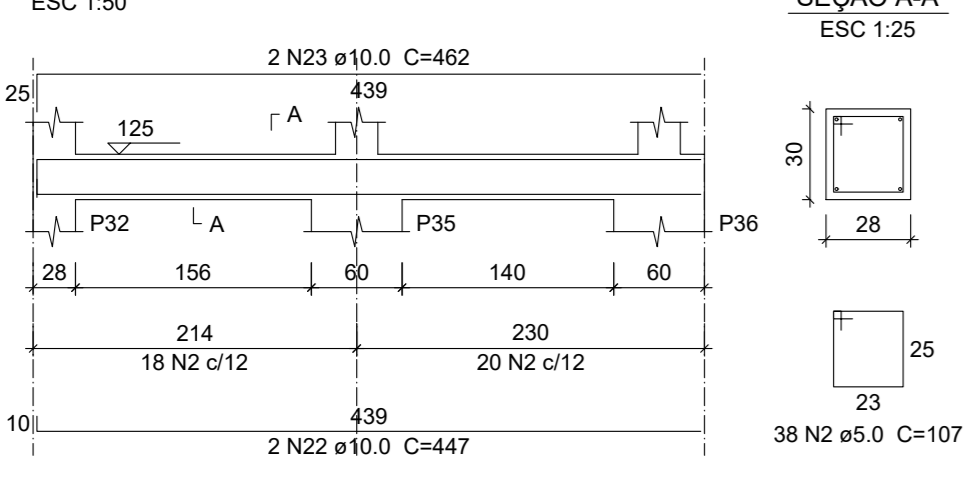
VIV-2 (12 x 20)
ESC 1:50



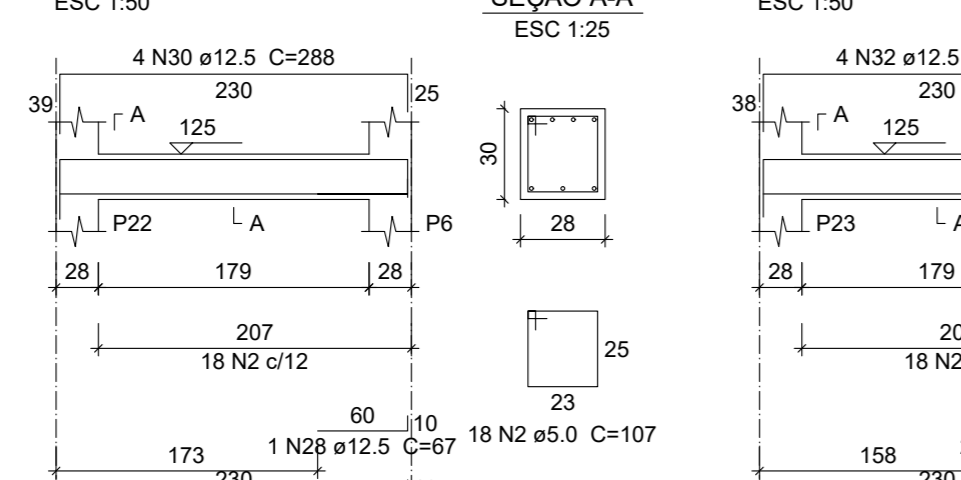
VII-9 (12 x 30)
ESC 1:50



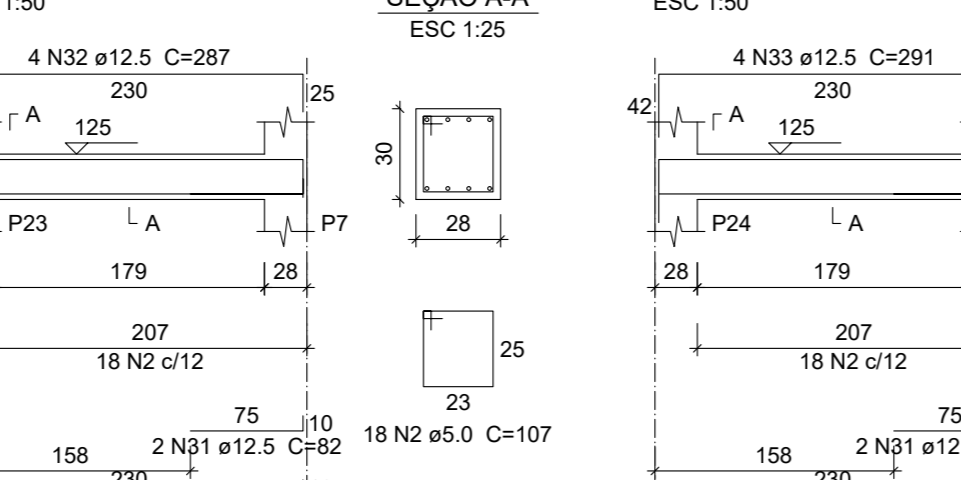
VII-10 (28 x 30)
ESC 1:50



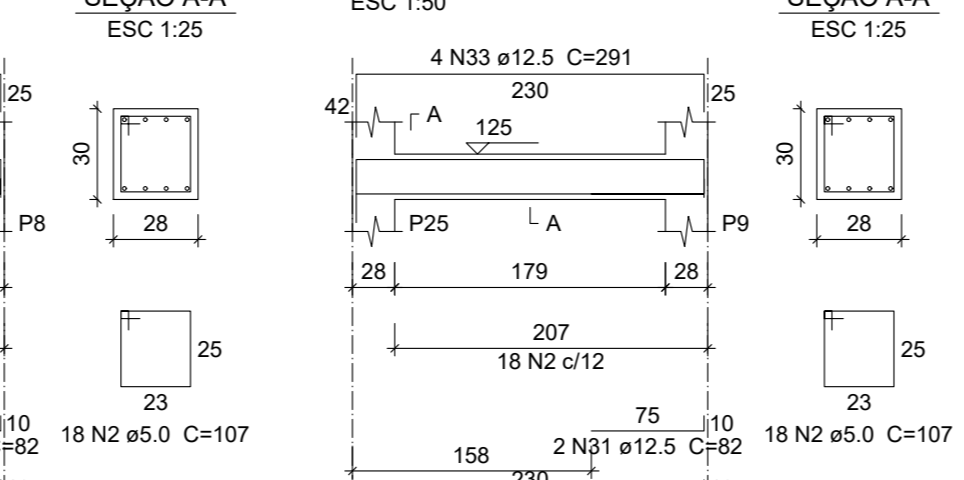
VII-11 (28 x 30)
ESC 1:50



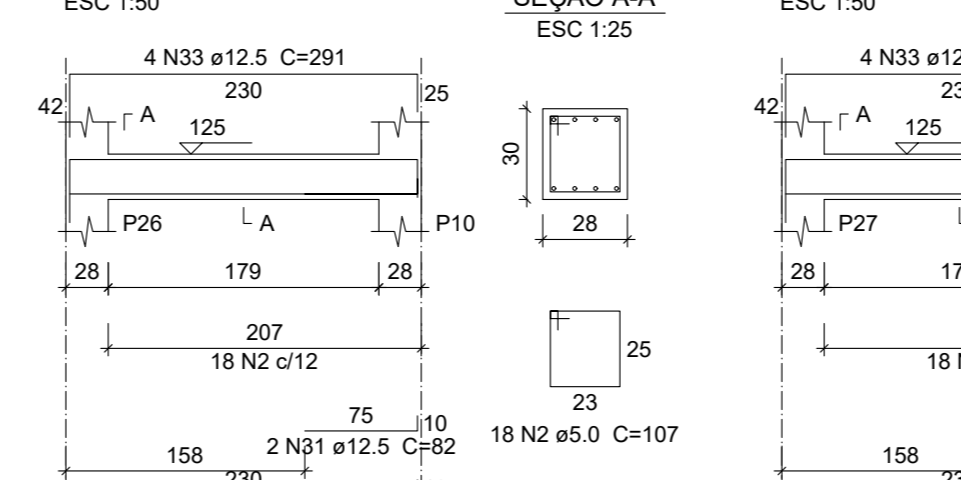
VII-12 (28 x 30)
ESC 1:50



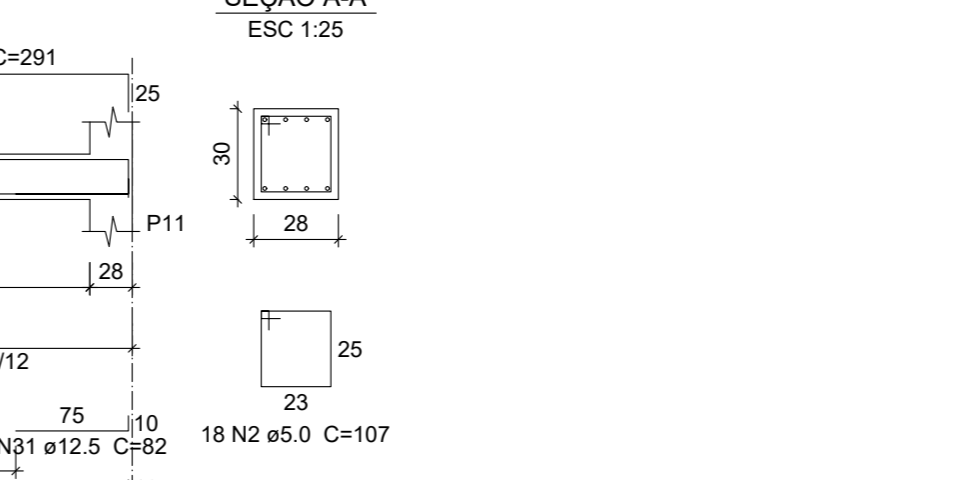
VII-13 (28 x 30)
ESC 1:50



VII-14 (28 x 30)
ESC 1:50



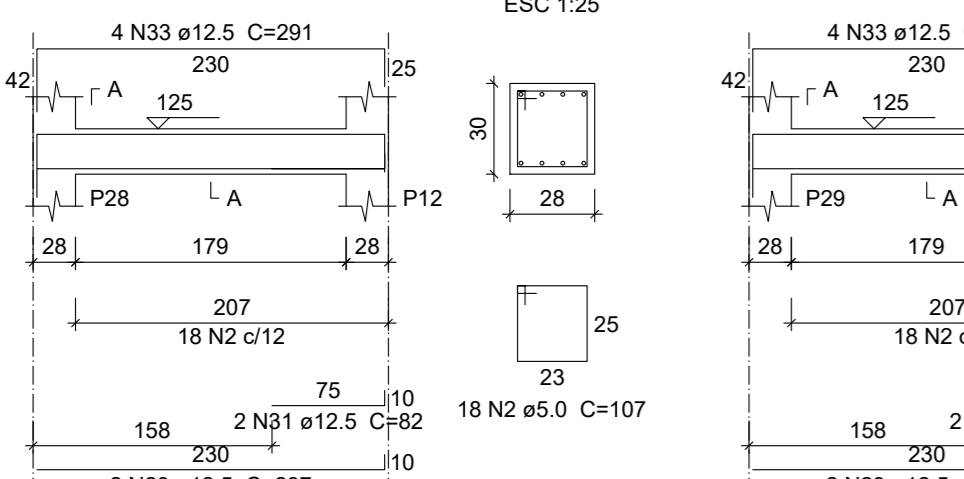
VII-15 (28 x 30)
ESC 1:50



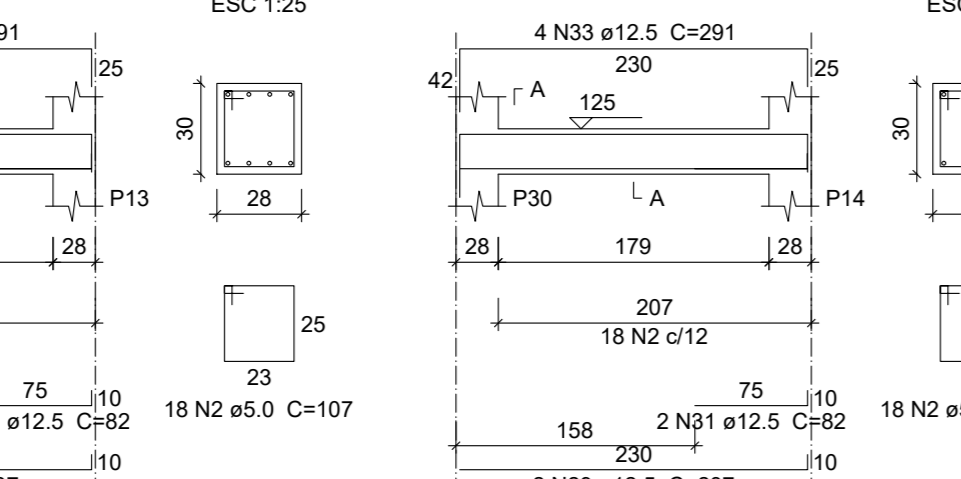
VII-16 (28 x 30)
ESC 1:50



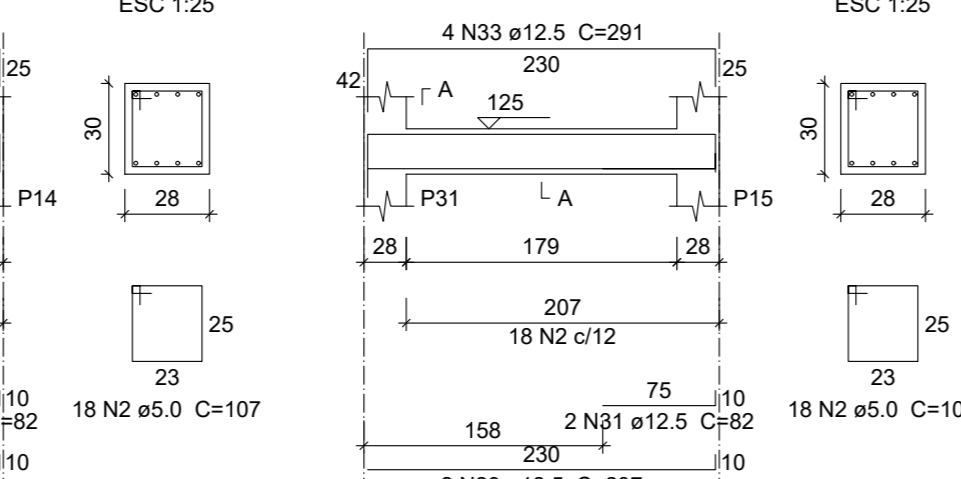
VII-17 (28 x 30)
ESC 1:50



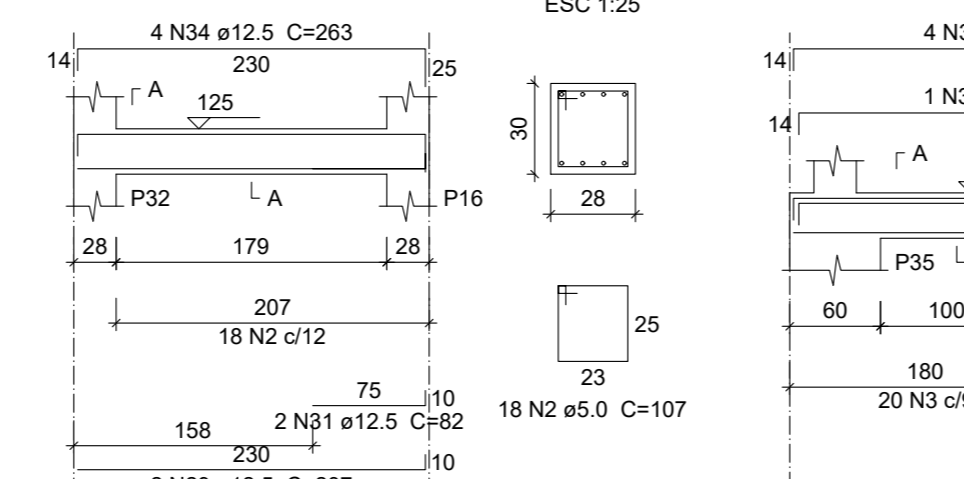
VII-18 (28 x 30)
ESC 1:50



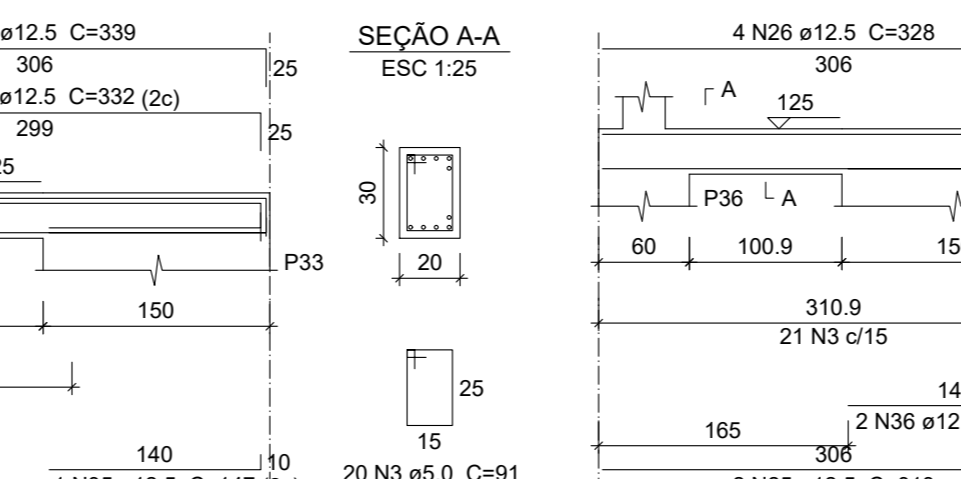
VII-19 (28 x 30)
ESC 1:50



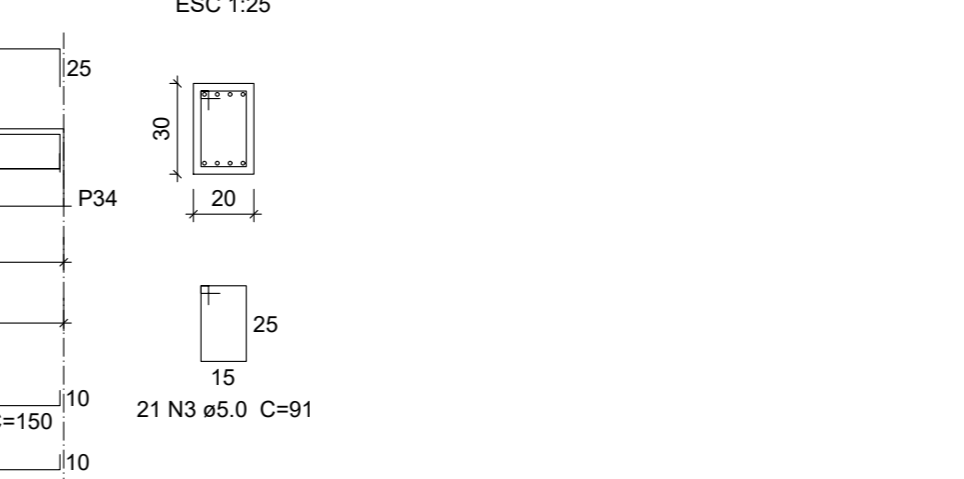
VII-20 (28 x 30)
ESC 1:50



VII-21 (28 x 30)
ESC 1:50



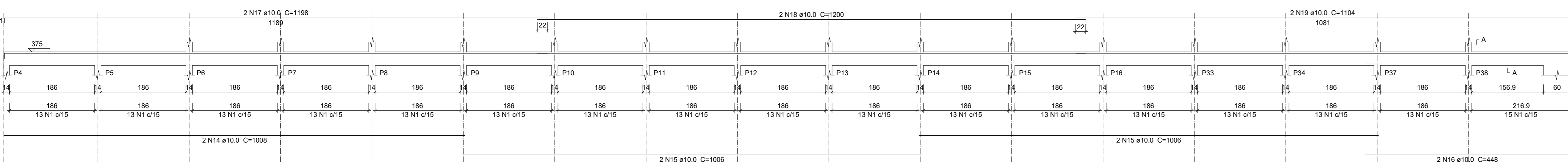
VII-22 (20 x 30)
ESC 1:50



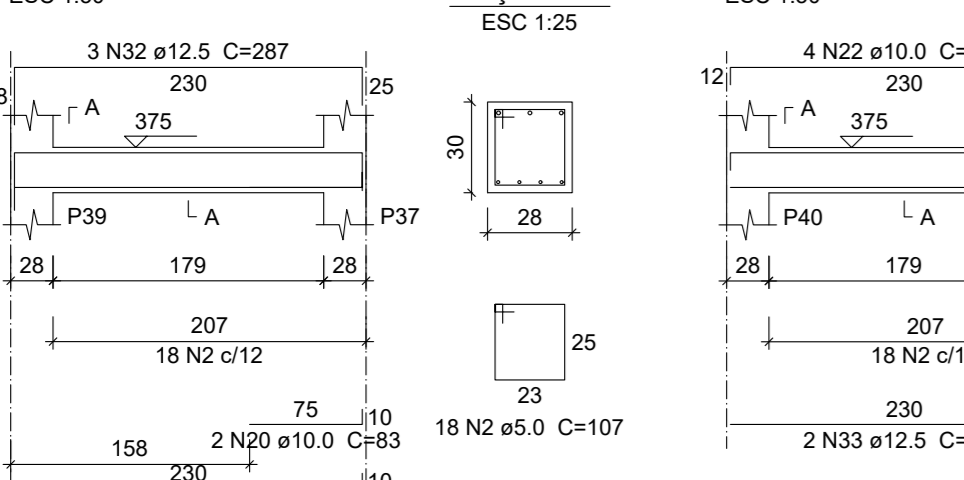
VII-23 (20 x 30)
ESC 1:50



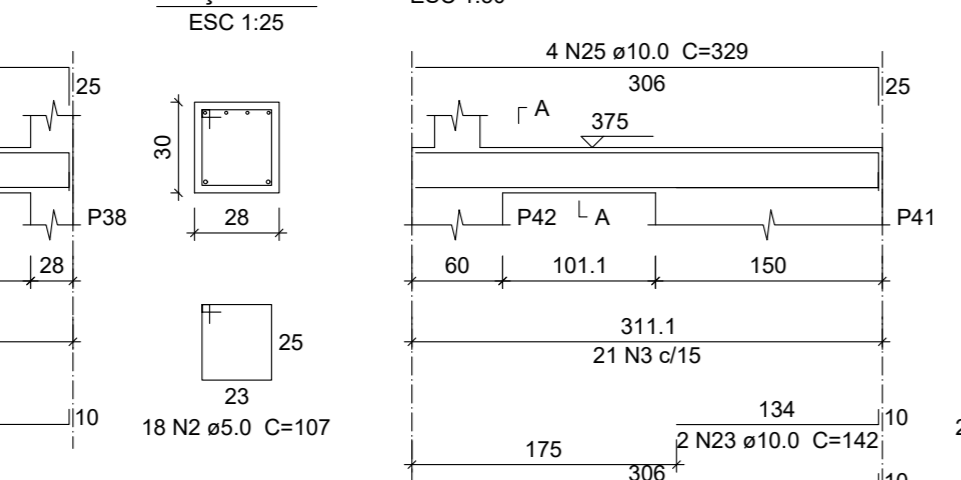
VIII-4 (12 x 30)
ESC 1:50



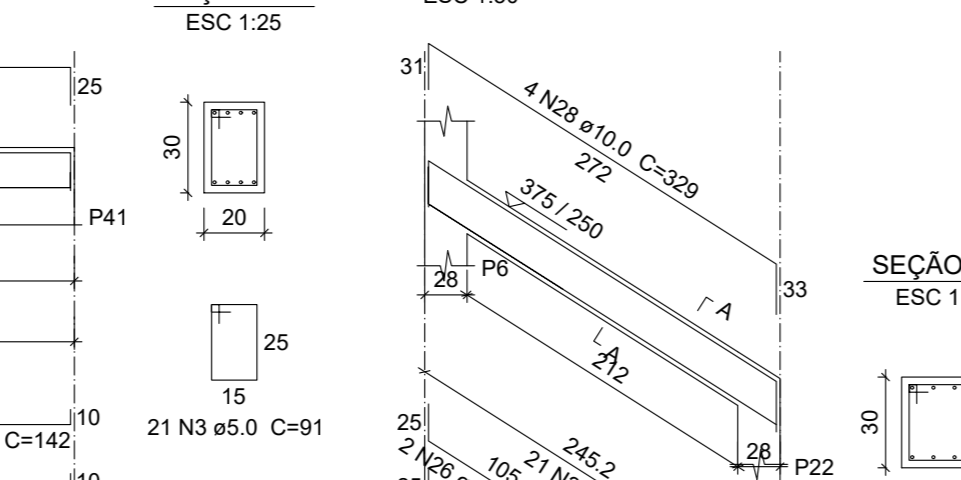
VIII-6 (28 x 30)
ESC 1:50



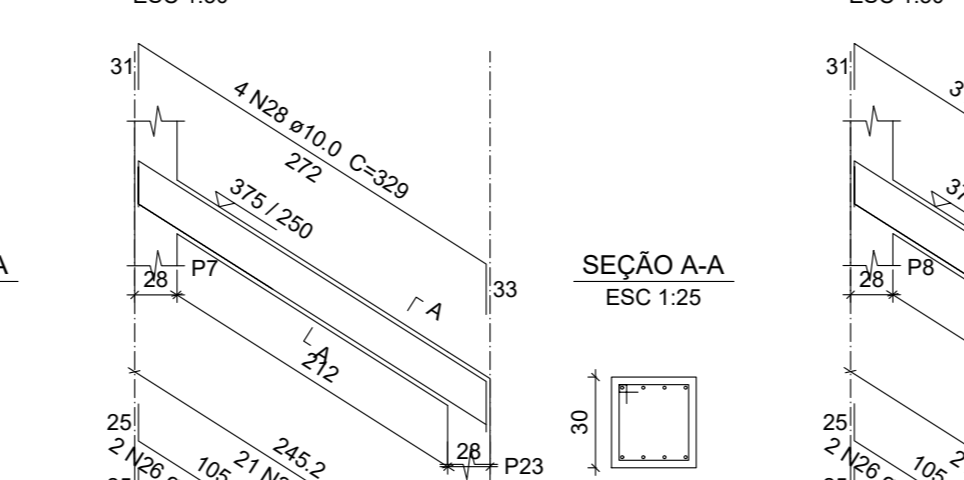
VIII-7 (28 x 30)
ESC 1:50



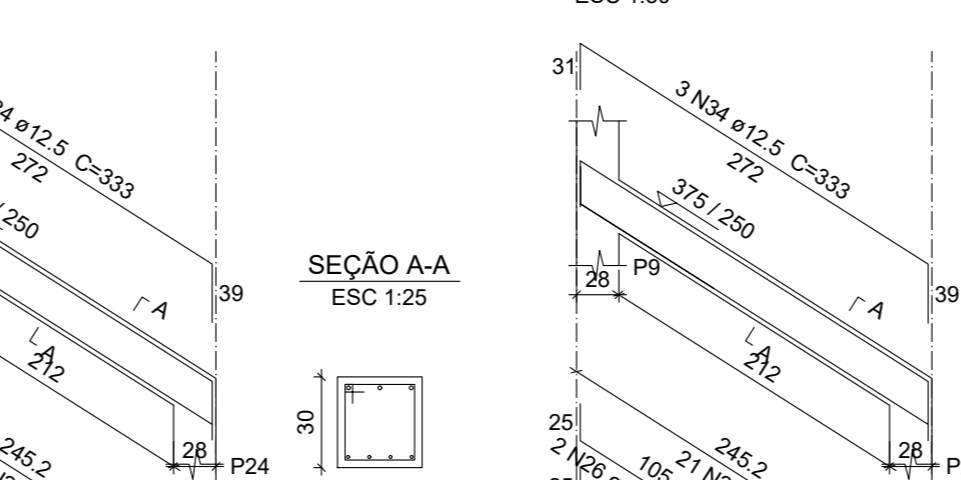
VIII-8 (20 x 30)
ESC 1:50



VIII-9 (28 x 30)
ESC 1:50



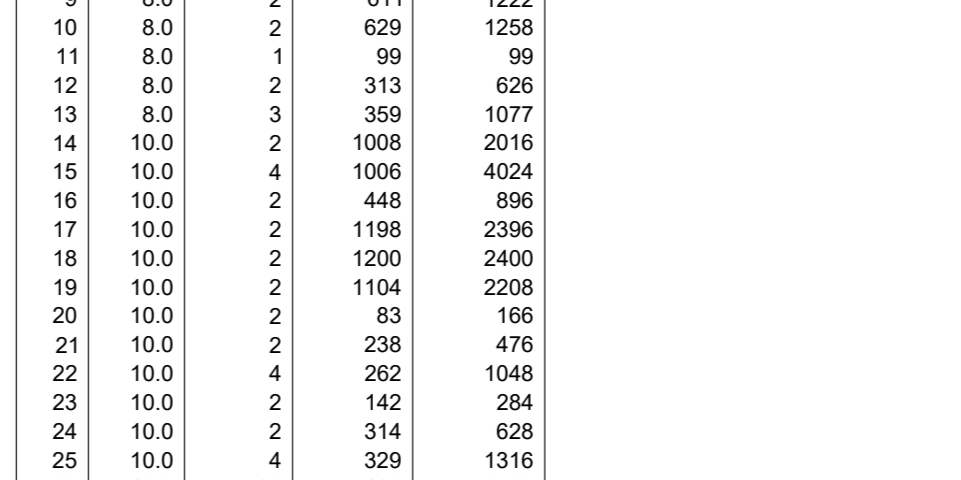
VIII-10 (28 x 30)
ESC 1:50



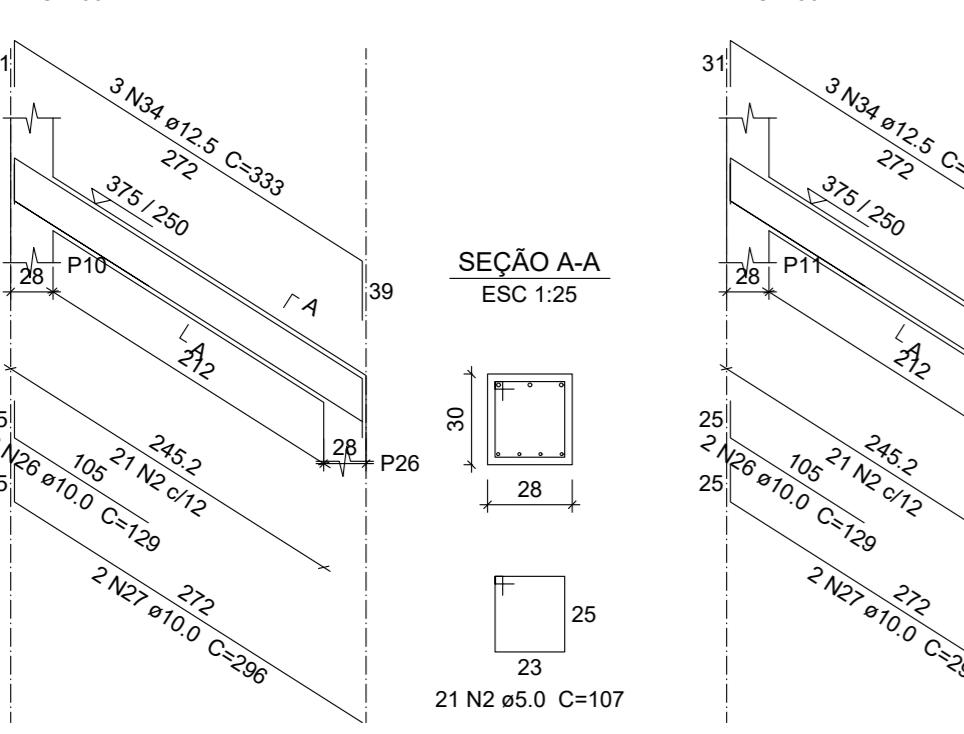
VIII-11 (28 x 30)
ESC 1:50



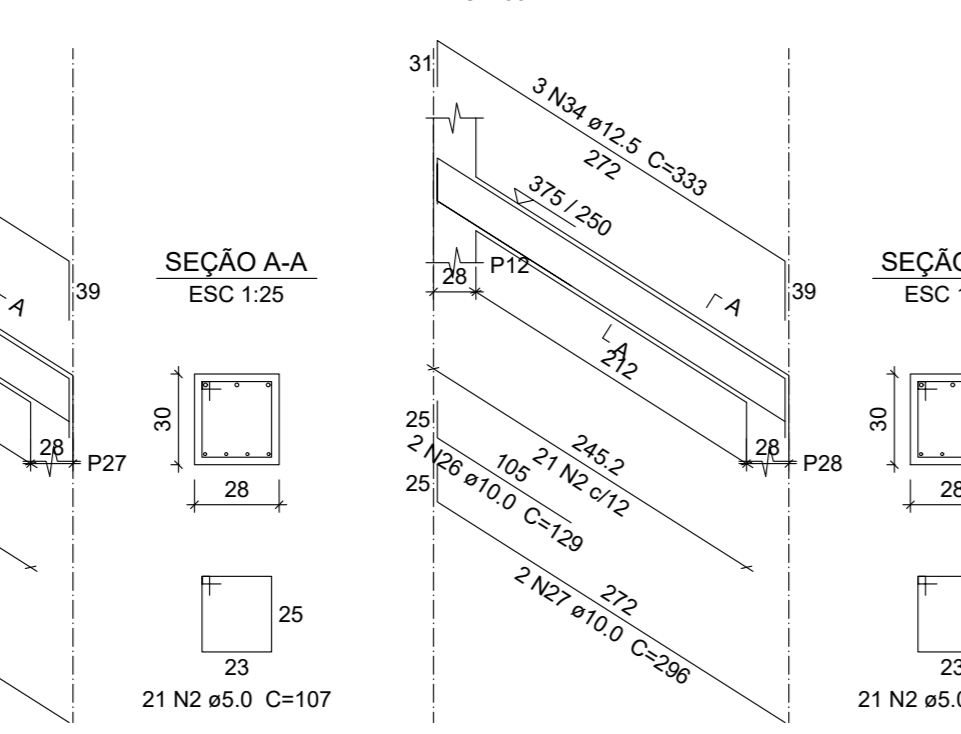
VIII-12 (28 x 30)
ESC 1:50



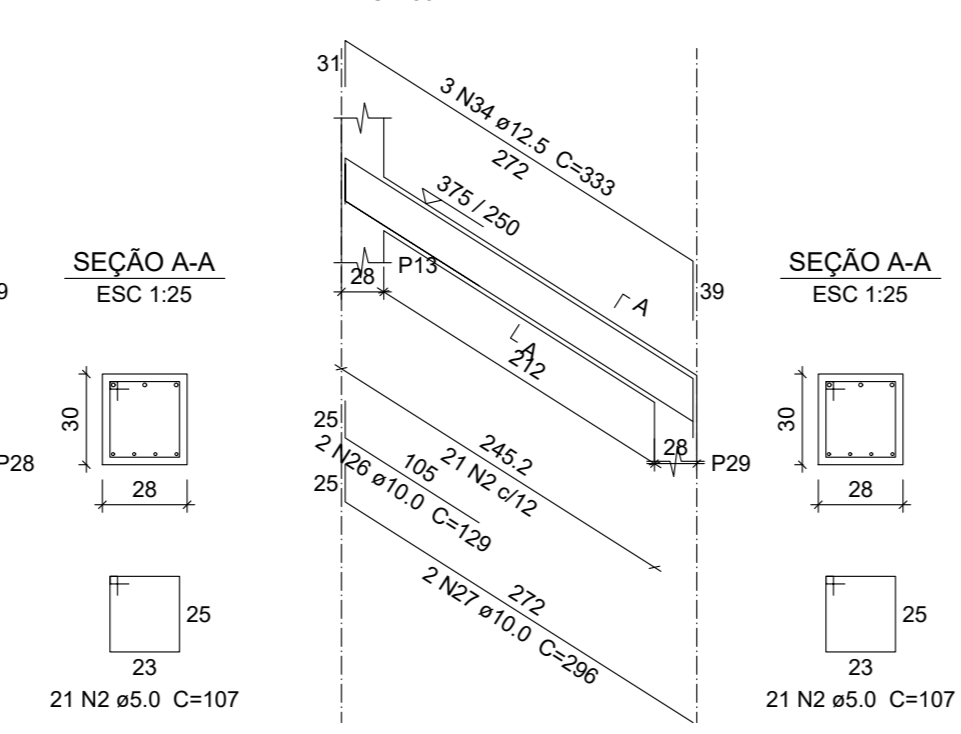
VIII-13 (28 x 30)
ESC 1:50



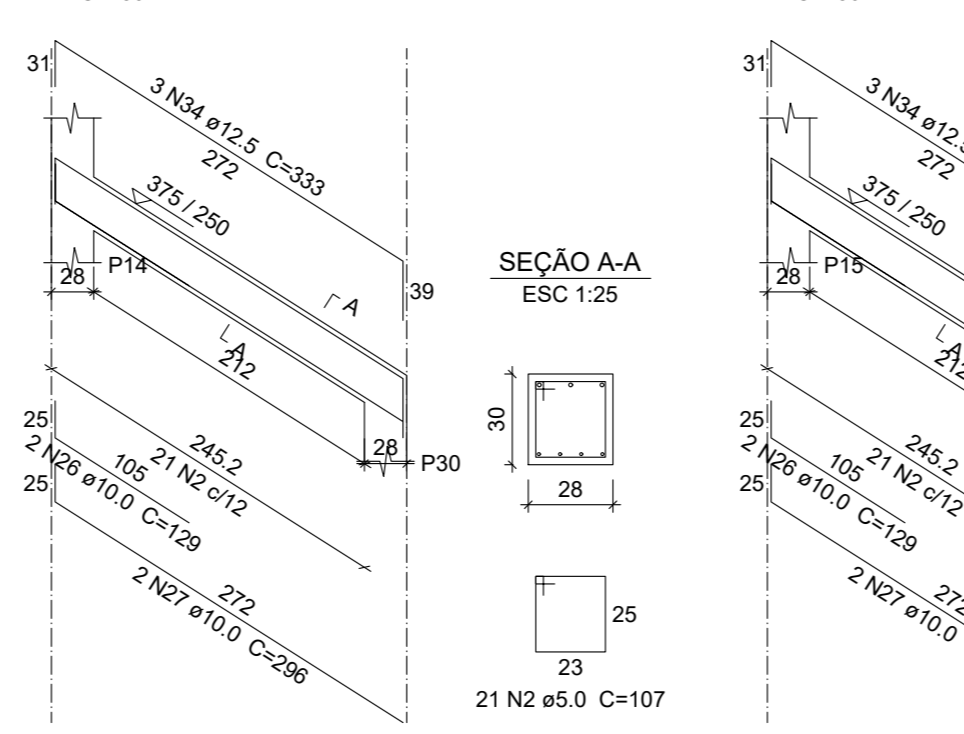
VIII-14 (28 x 30)
ESC 1:50



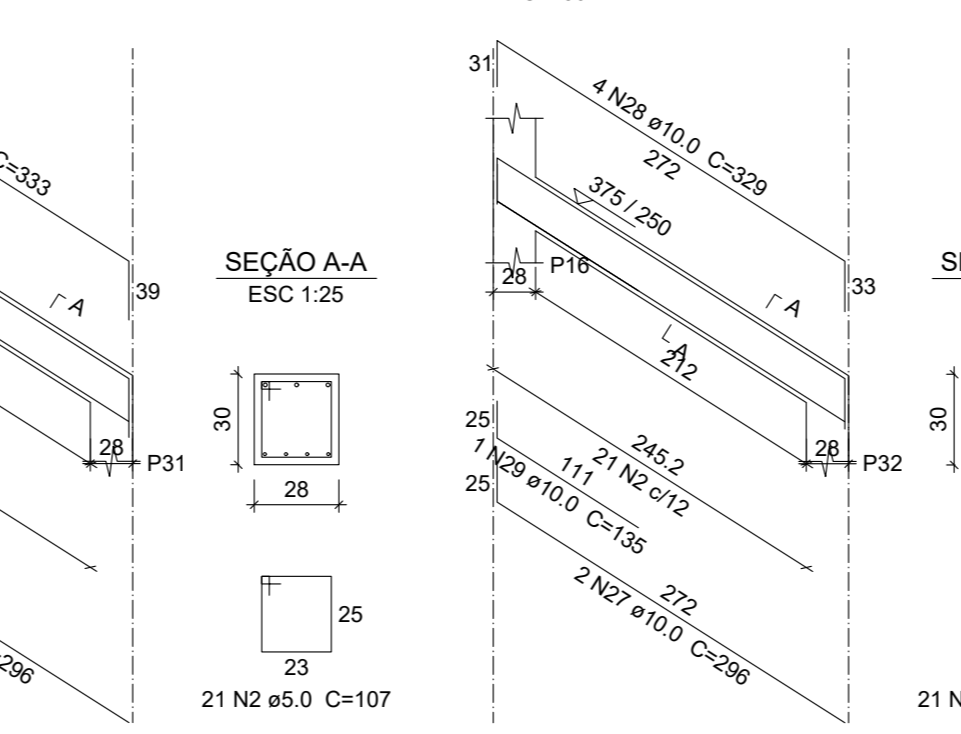
VIII-15 (28 x 30)
ESC 1:50



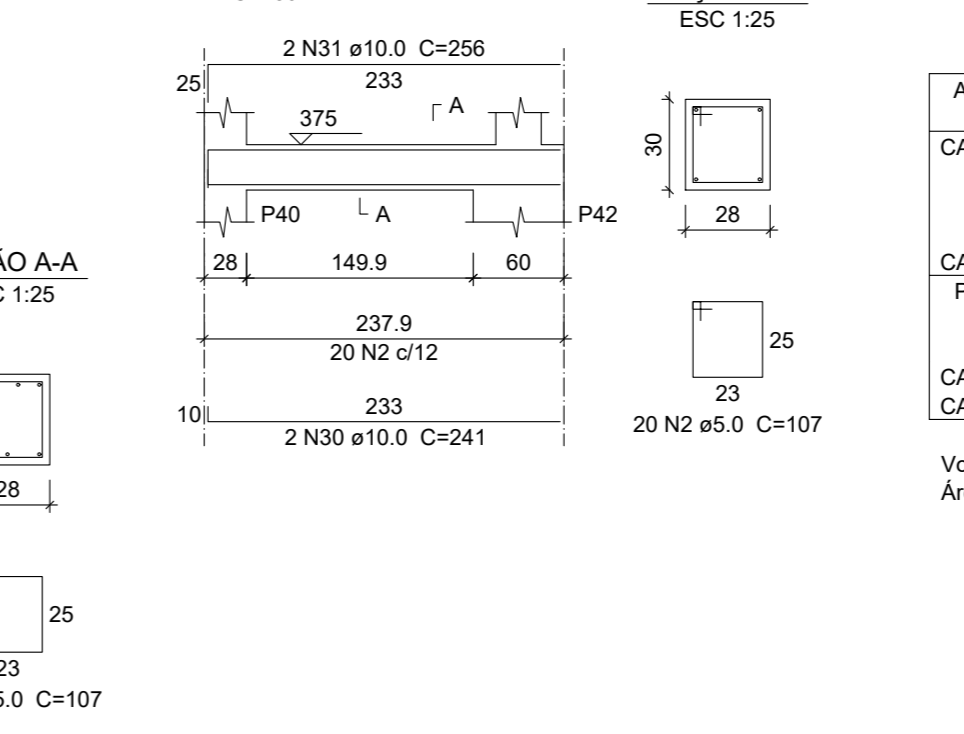
VIII-16 (28 x 30)
ESC 1:50



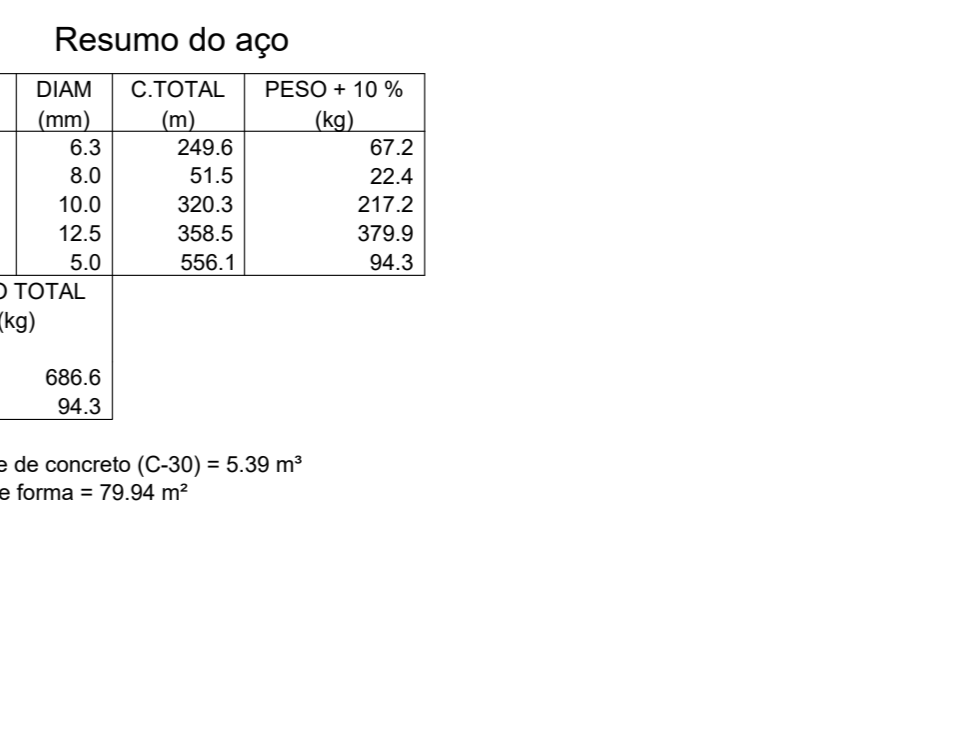
VIII-17 (28 x 30)
ESC 1:50



VIII-18 (28 x 30)
ESC 1:50



VIII-19 (28 x 30)
ESC 1:50



VIII-20 (28 x 30)
ESC 1:50



Relação do aço

CAÇO	N	DIAM (mm)	QUANT	CUNTA (cm)	C.TOTAL (cm)
VII-2	1	5.0	437	75	32775
VII-2	2	5.0	378	107	40446
VII-2	3	5.0	83	91	7503
VII-2	4	8.0	1	182	182
VII-2	5	8.0	2	419	838
VII-2	6	8.0	3	461	1383
VII-2	7	8.0	3	199	398
VII-2	8	8.0	4	429	1716
VII-2	9	8.0	6	475	2850
VII-2	10	8.0	2	1008	2016
VII-2	11	8.0	4	1006	4024
VII-2	12	8.0	2	447	894
VII-2	13	8.0	2	1198	2396
VII-2	14	8.0	2	1200	2400
VII-2	15	8.0	2	1116	2232
VII-2	16	10.0	2	1006	2012
VII-2	17	10.0	2	1006	2012
VII-2	18	10.0	2	1036	2072
VII-2	19	10.0	2	981	1962
VII-2	20	10.0	4	1200	4800
VII-2	21	10.0	2	976	1952
VII-2	22	10.0	4	447	1788
VII-2	23	10.0	4	462	1848
VII-2	24	12.5	1	145	145
VII-2	25	12.5	9	313	2817
VII-2	26	12.5	11	268	3048
VII-2	27	12.5	1	115	115
VII-2	28	12.5	1	67	67
VII-2	29	12.5	22	237	5214
VII-2	30	12.5	4	288	1152
VII-2	31	12.5	20	82	1640
VII-2	32	12.5	4	287	1148
VII-2	33	12.5	32	281	9012
VII-2	34	12.5	4	293	1172
VII-2	35	12.5	1	147	147
VII-2	36	12.5	3	150	450
VII-2	37	12.5	1	332	332
VII-2	38	12.5	4	339	1356

Resumo do aço

CAÇO	DIAM (mm)	C.TOTAL (m)	PESO + 10% (kg)
CA50	8.0	212.4	82.2
CA50	10.0	188.1	114
CA50	12.5	288.5	302.6
CA50	5.0	807.8	137
PESO TOTAL (kg)			533.4
CA50	506.8		
CA60	137		

Volume de concreto (C-30) = 5.31 m³
Área de forma = 76.84 m²

Relação do aço

CAÇO	N	DIAM (mm)	QUANT	CUNTA (cm)	C.TOTAL (cm)
VIII-4	1	5.0	223	75	16725
VIII-4	2	5.0	310	107	33170
VIII-4	3	5.0	21	91	1911
VIII-4	4	5.0	69	55	3795
VIII-4	5	6.3	160	80	12800
VIII-4	6	6.3	160	76	12160
VIII-4	7	8.0	2	209	418
VIII-4	8	8.0	2	225	450
VIII-4	9	8.0	2	611	1222
VIII-4	10	8.0	2	629	1258
VIII-4	11	8.0	1	99	99
VIII-4	12	8.0	2	313	626
VIII-4	13	8.0	3	369	1077
VIII-4	14	10.0	2	1008	2016
VIII-4	15	10.0	4	1006	4024
VIII-4	16	10.0	2	448	896
VIII-4	17	10.0	2	1198	2396
VIII-4	18	10.0	2	1200	2400
VIII-4	19	10.0	2	1104	2208
VIII-4	20	10.0	2	83	166
VIII-4	21	10.0	2	238	476
VIII-4	22	10.0	4	262	1048
VIII-4	23	10.0	2	142	284
VIII-4	24	10.0	2	314	628
VIII-4	25	10.0	4	329	1316
VIII-4	26	10.0	20	129	2580
VIII-4	27	10.0	22	296	5512
VIII-4	28	10.0	12	359	3948
VIII-4	29	10.0	1	135	135
VIII-4	30	10.0	2	241	482
VIII-4	31	10.0	2	266	532
VIII-4	32	12.5	3	287	861
VIII-4	33	12.5	2	237	474
VIII-4	34	12.5	24	333	7992
VIII-4	35	12.5	24	542	13008
VIII-4	36	12.5	24	417	10008
VIII-4	37	12.5	12	292	3504

Resumo do aço

CAÇO	DIAM (mm)	C.TOTAL (m)	PESO + 10% (kg)
CA50	5.0	298.8	87.2
CA50	8.0	515	22.4
CA50	10.0	303.3	217.2
CA50	12.5	188.5	379.9
CA50	5.0	586.1	94.3
PESO TOTAL (kg)			501.9
CA50	686.6		
CA60	94.3		

Volume de concreto (C-30) = 5.39 m³
Área de forma = 79.94 m²

REVISO	EMISSO	DESCRIÇÃO	DATA
00	EMISSO		18/12/2020

PROJETO EXECUTIVO DE ENGENHARIA

FAGUNZ ENGENHARIA LTDA
CNPJ: 01.022.532/0001-14
FRANCISCO BELTRÃO - PR
FAGUNZENGENHARIA.COM.BR

MURO DE ARRIMO DE CONCRETO ARMADO COM PLACAS PRÉ MOLDADAS
Rua Governador Celso Ramos, 7466-0, Santa Catarina

Projeto Estrutural

AUTOR DO PROJETO: _____ DATA: _____

PROF. DR. VAMER FALCÃO DOS SANTOS
CREA-SC: 204879-1

PROFESSOR MANOEL DE VAREJA - SC
CNPJ: 03.009.928/0001-64

DATA: 08 DE MARÇO DE 2020 ESCALA: 1:5000
TÍTULO DOS DESENHOS: _____

REVISÃO: _____