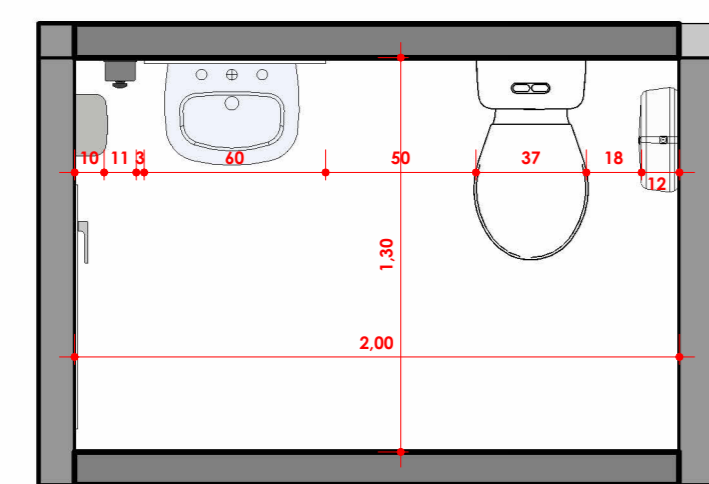
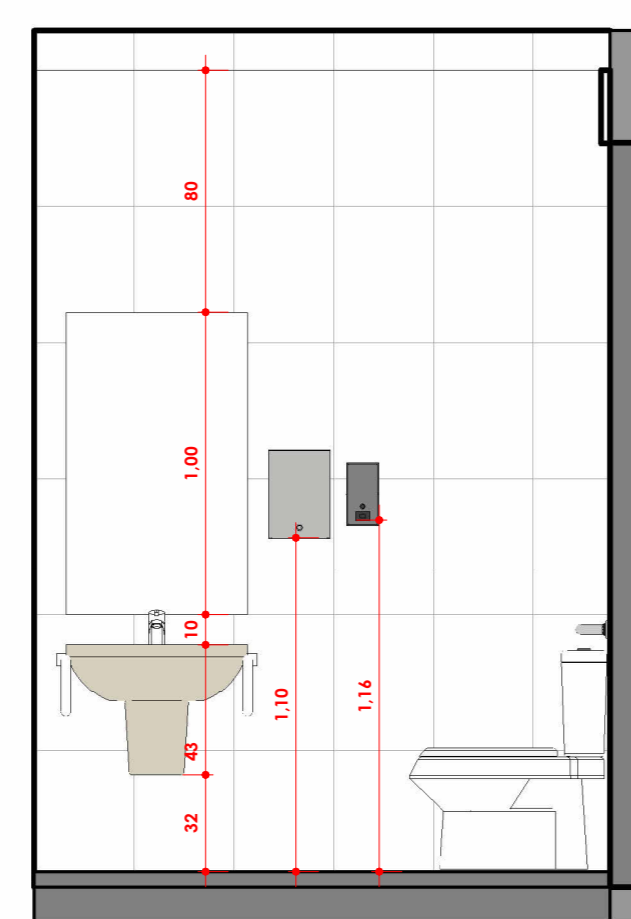


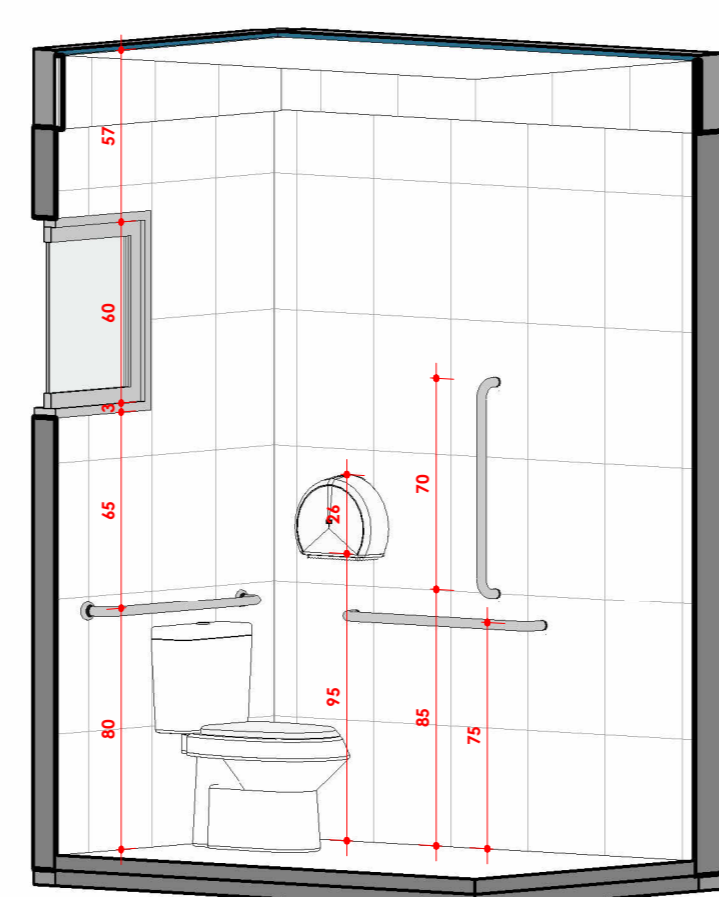
1 DETALHE LAV. MASC
1:25



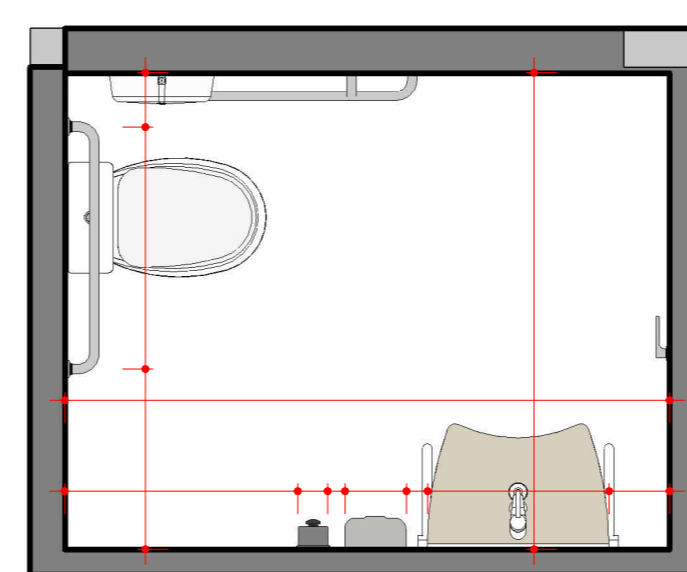
2 LAV. MASC
1:25



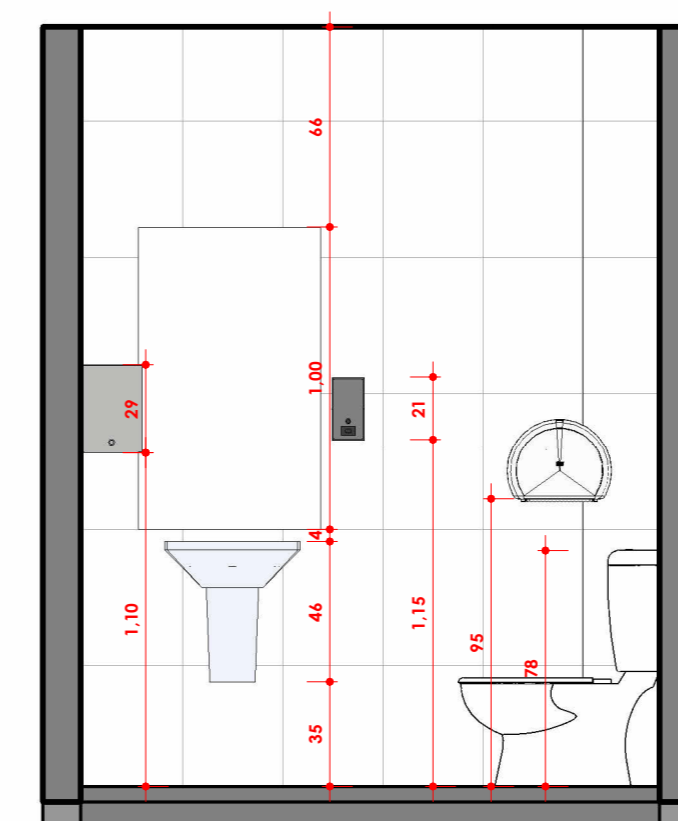
3 DETALHE LAV. FEM
1:25



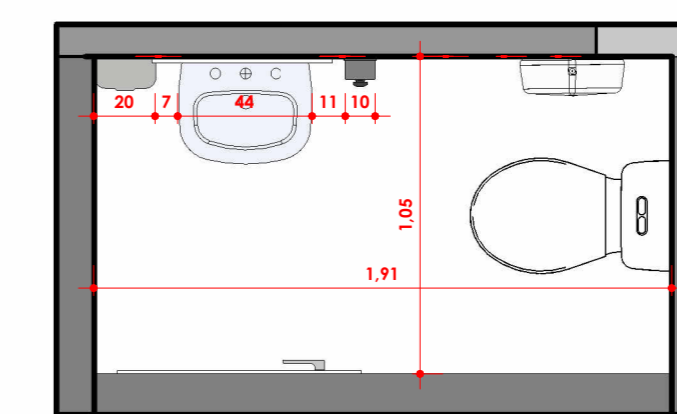
4 LAV. FEM DETALHE ACESSÍVEL
1:25



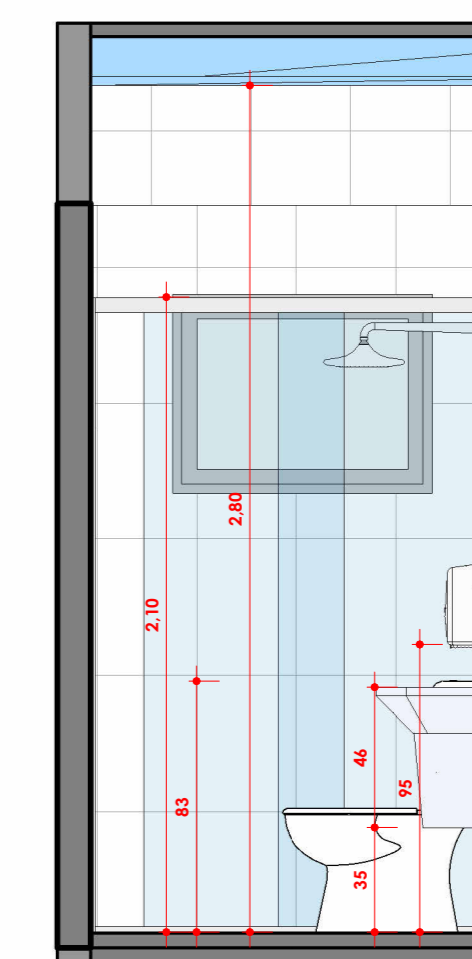
5 LAV. FEM ACESSÍVEL
1:25



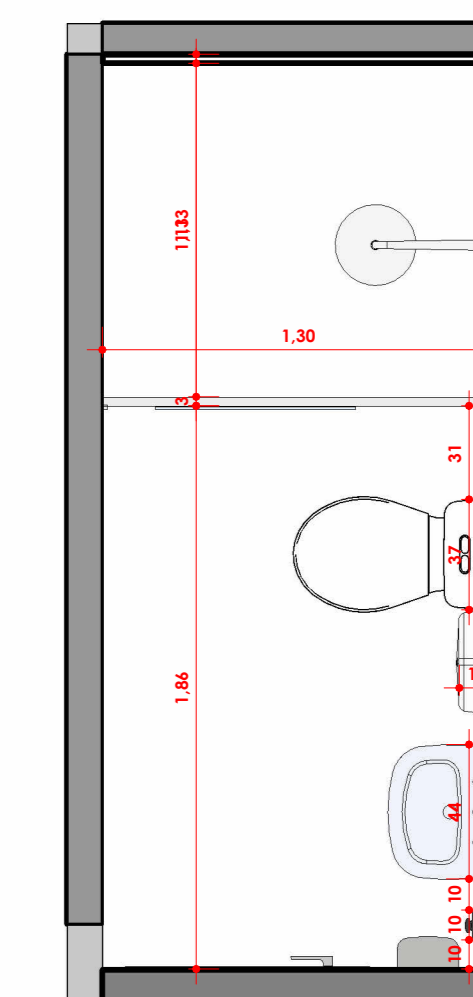
6 DETALHE LAVABO
1:25



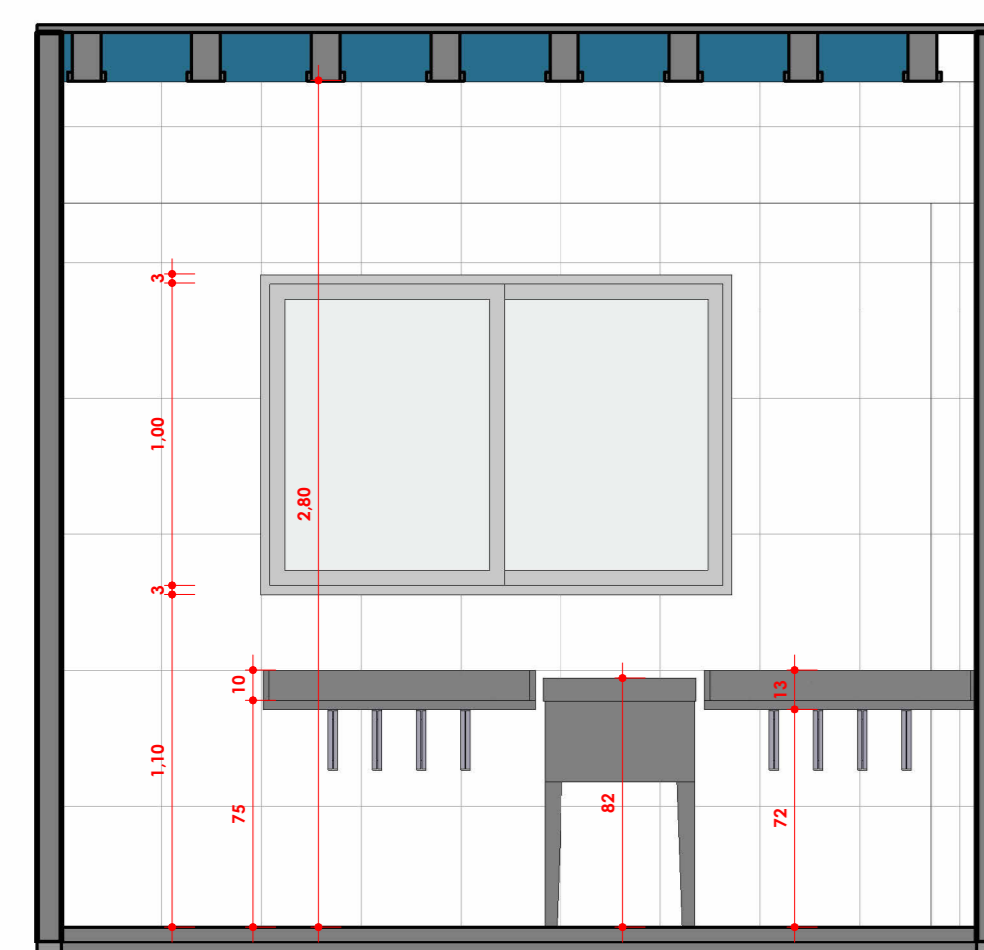
7 LAVABO
1:25



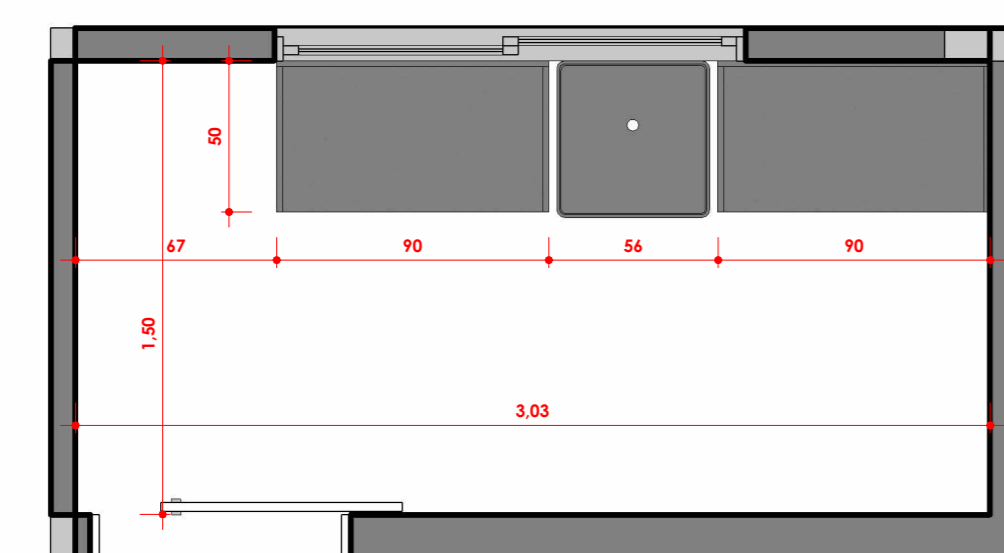
8 DETALHE BWC
1:25



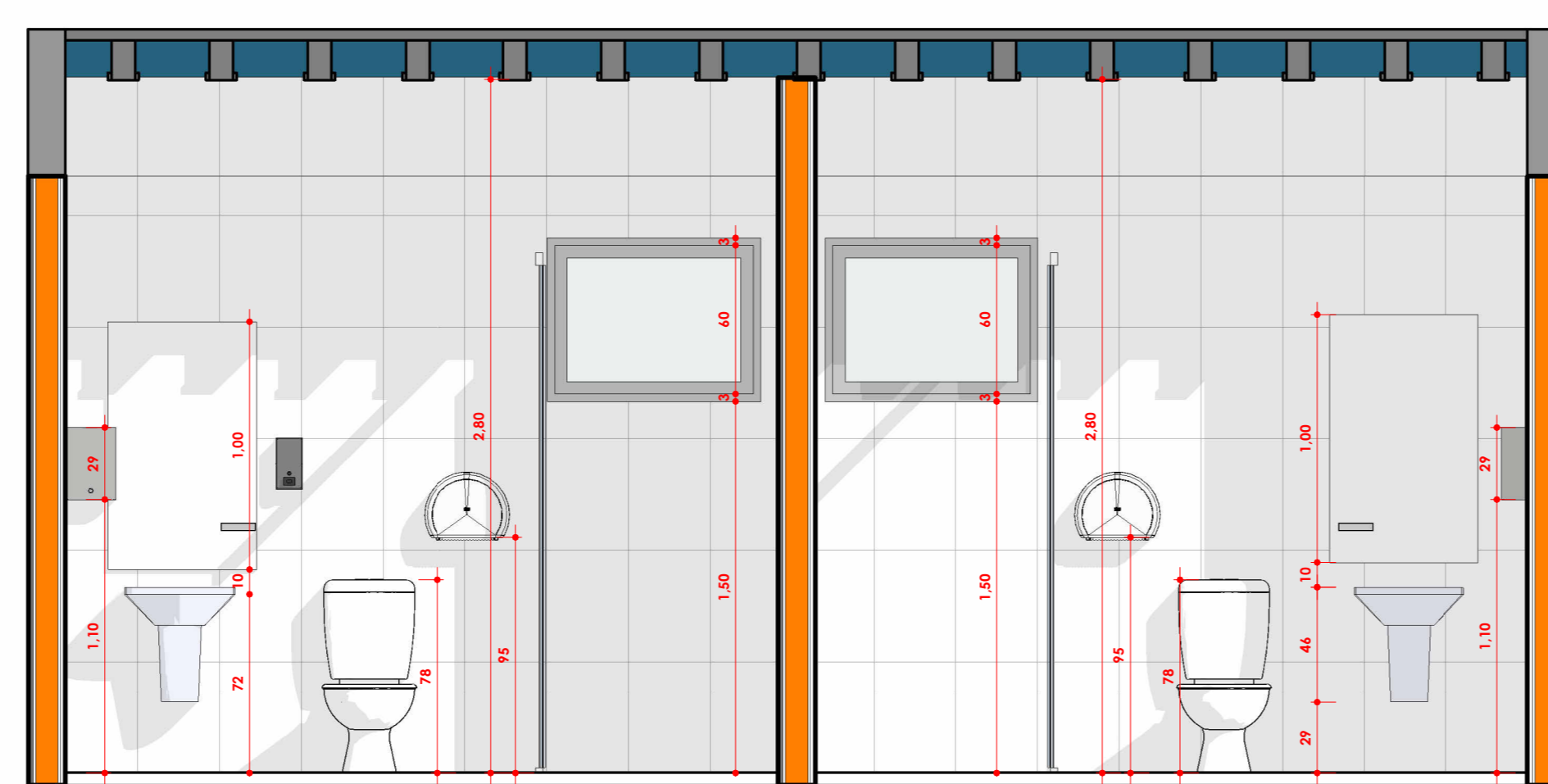
9 BWC
1:25



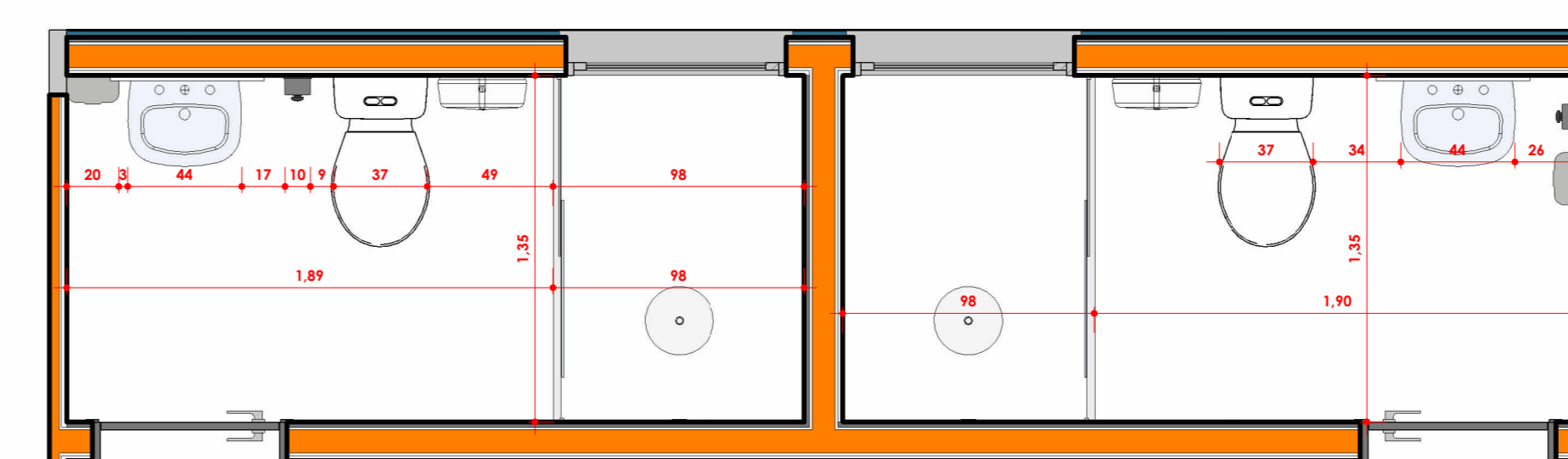
10 DETALHE ÁREA DE SERVIÇO
1:25



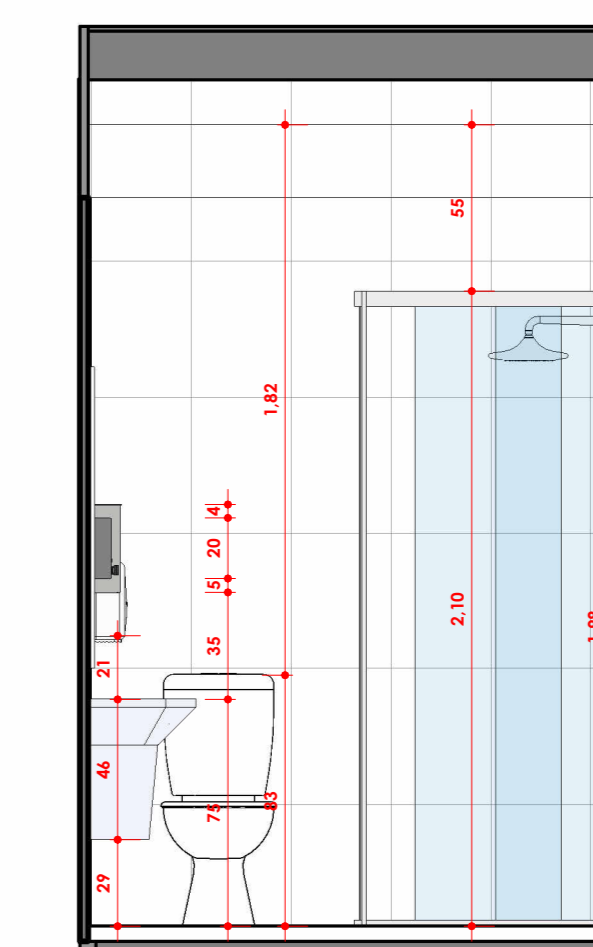
11 ÁREA DE SERVIÇO
1:25



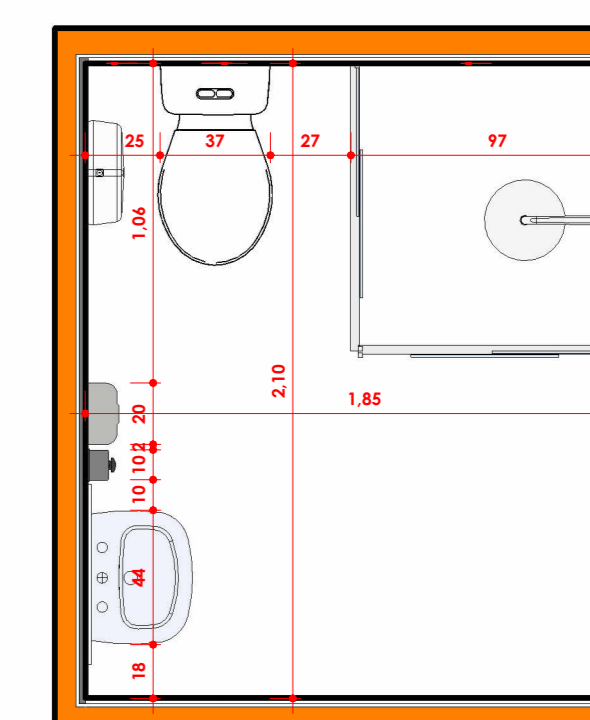
12 DETALHE BWC 01 E 02
1:25



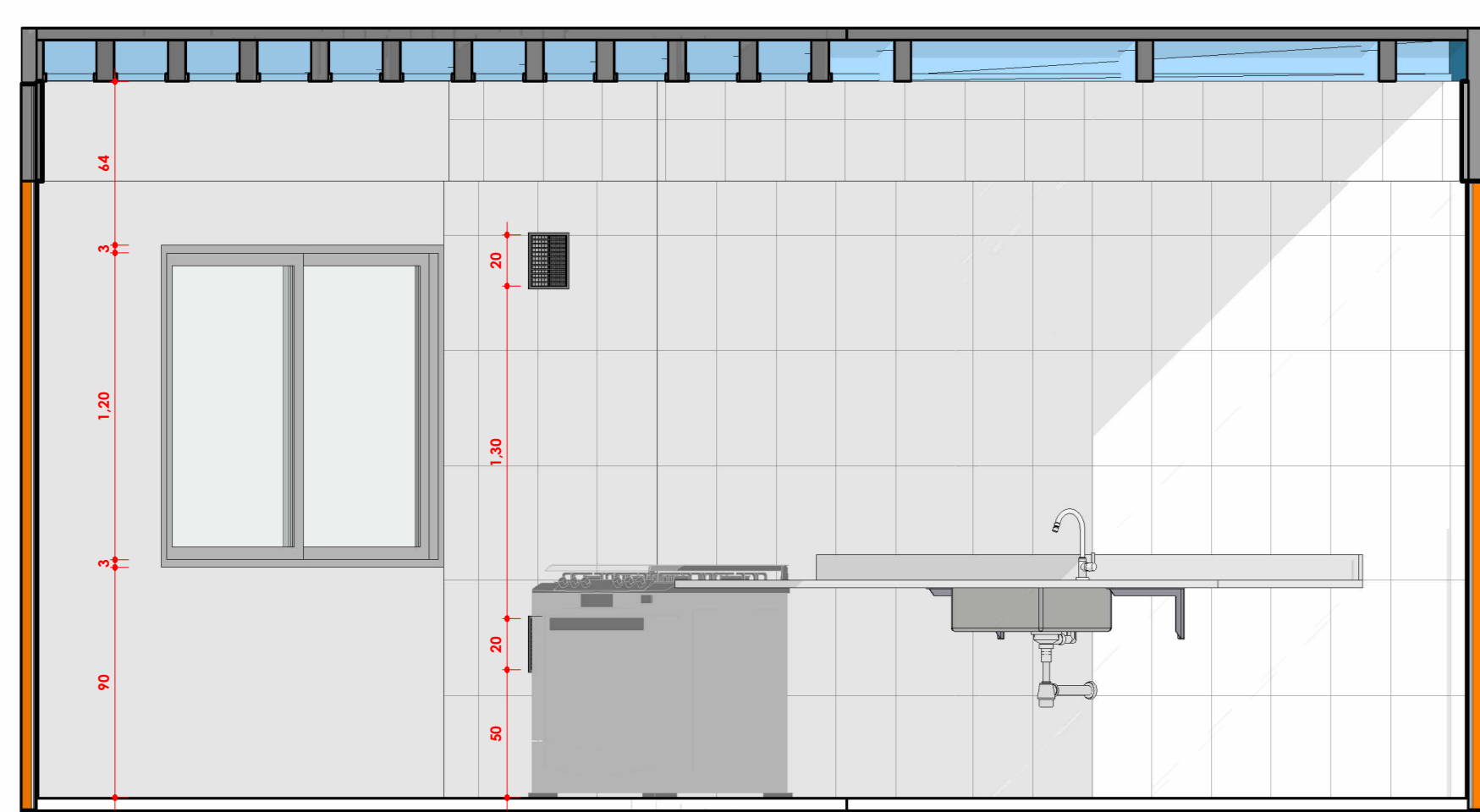
13 BWC 01 E 02
1:25



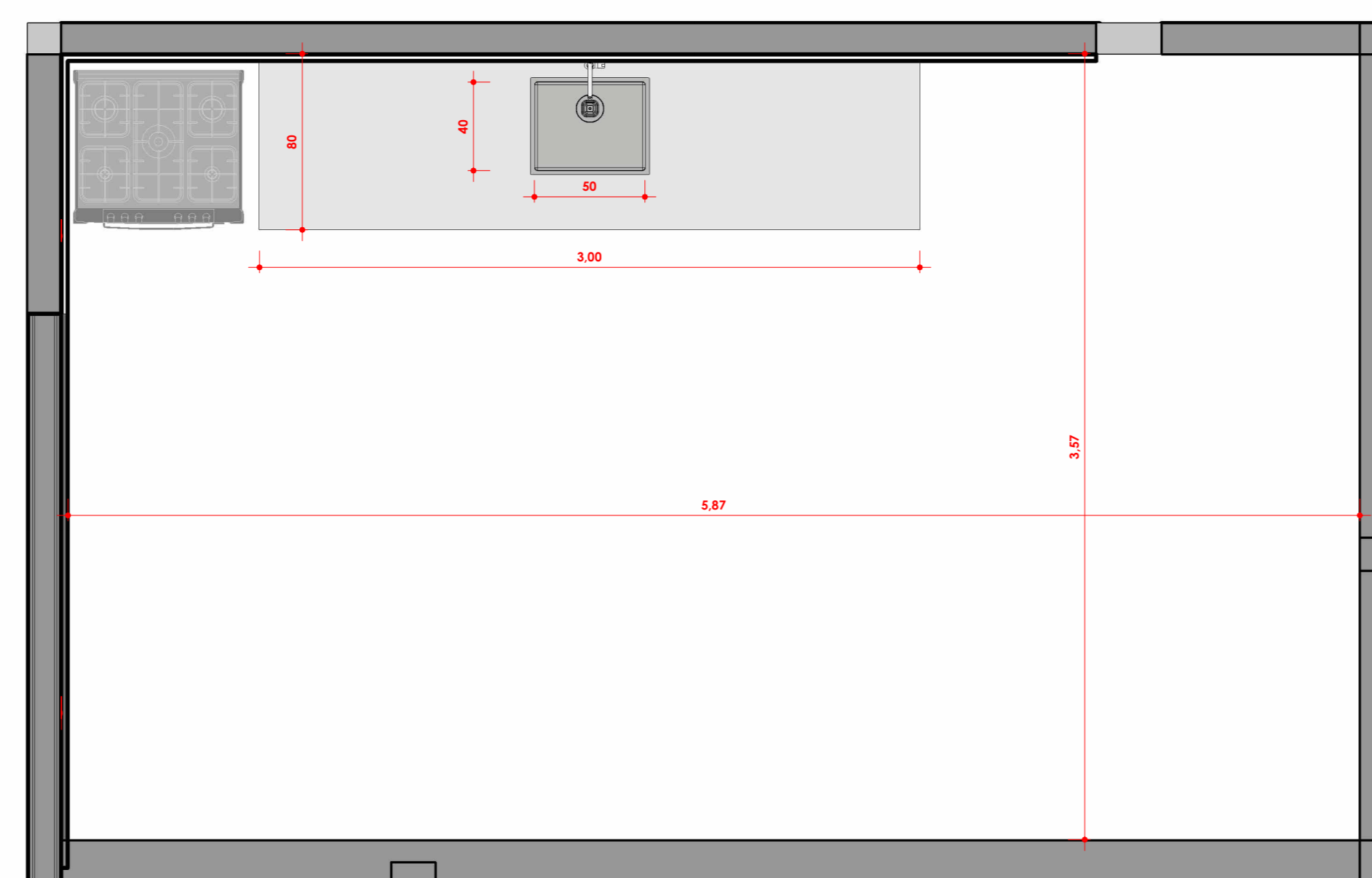
14 DETALHE BWC 04
1:25



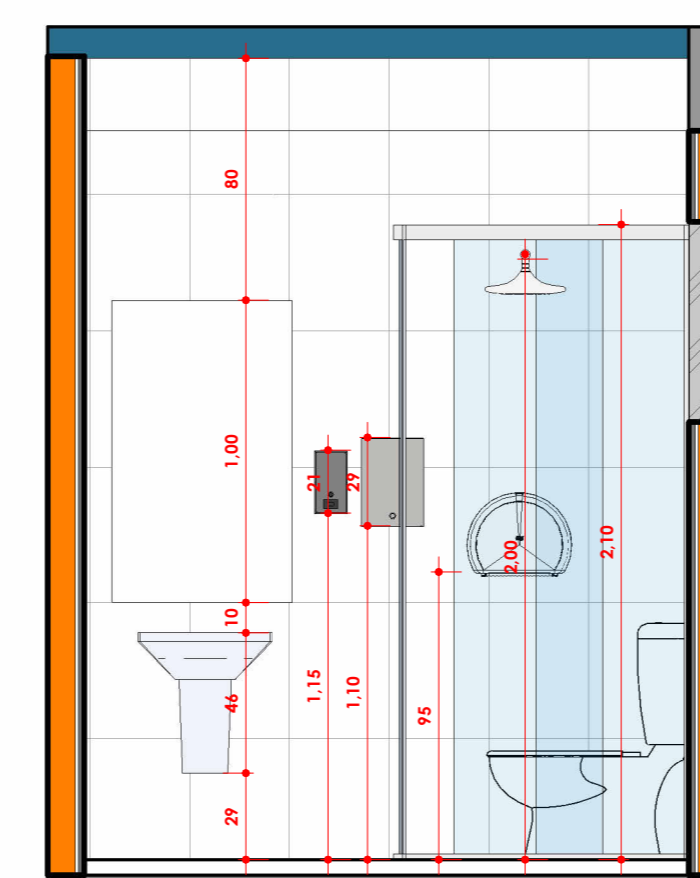
15 BWC 04
1:25



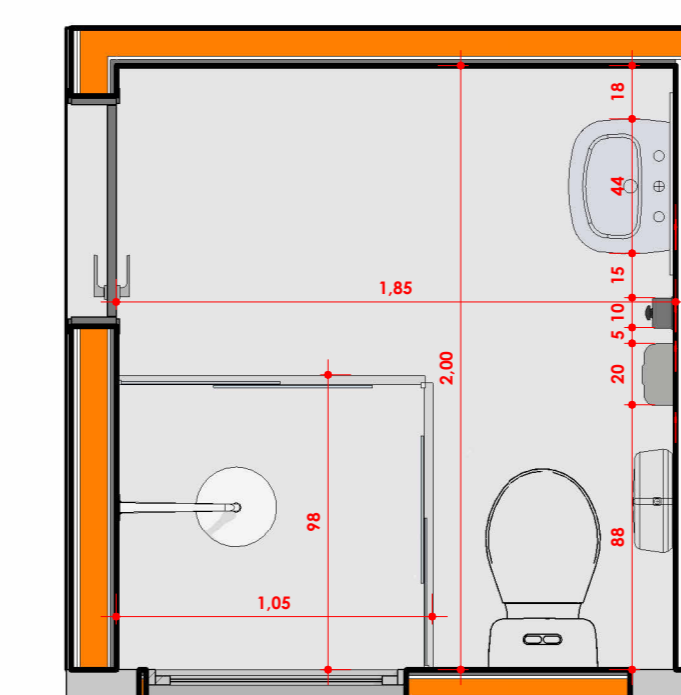
16 DETALHE COZINHA
1:25



17 COZINHA
1:25



18 DETALHE BWC 03
1:25



19 BWC 03
1:25

APROVAÇÃO DO MUNICÍPIO	
FERCON	
PROPRIETÁRIO	83.102.251/0001-04
MUNICÍPIO DE POMERODE	
DELEGACIA	
RESPONSÁVEL TÉCNICO	062522-0
FERNANDO STROISCH	
ENGENHEIRO CIVIL	
AVENIDA 21 DE JANEIRO - CENTRO - POMERODE/SC	
CONTEÚDO	ARQUITETURA
PROJECCIONADO: FERNANDO STROISCH	
TIPO DO ALVARÁ OBJETIVO	CONSTRUÇÃO
FINALIDADE DO ALVARÁ (TIPO DE EDIFICAÇÃO)	FOLHA
EDIFICAÇÃO INSTITUCIONAL	06/07
MÉTODO DE CONSTRUÇÃO	ALVENARIA
DATA	ESCALA
10/10/2023	INDICADA