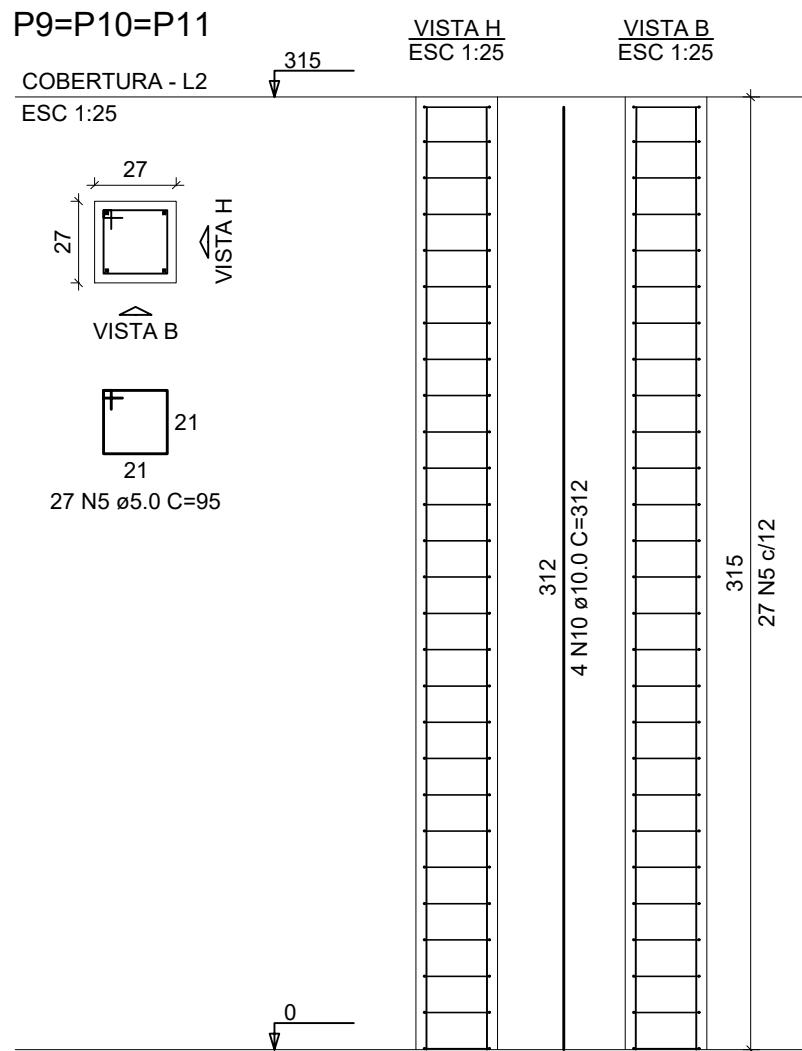
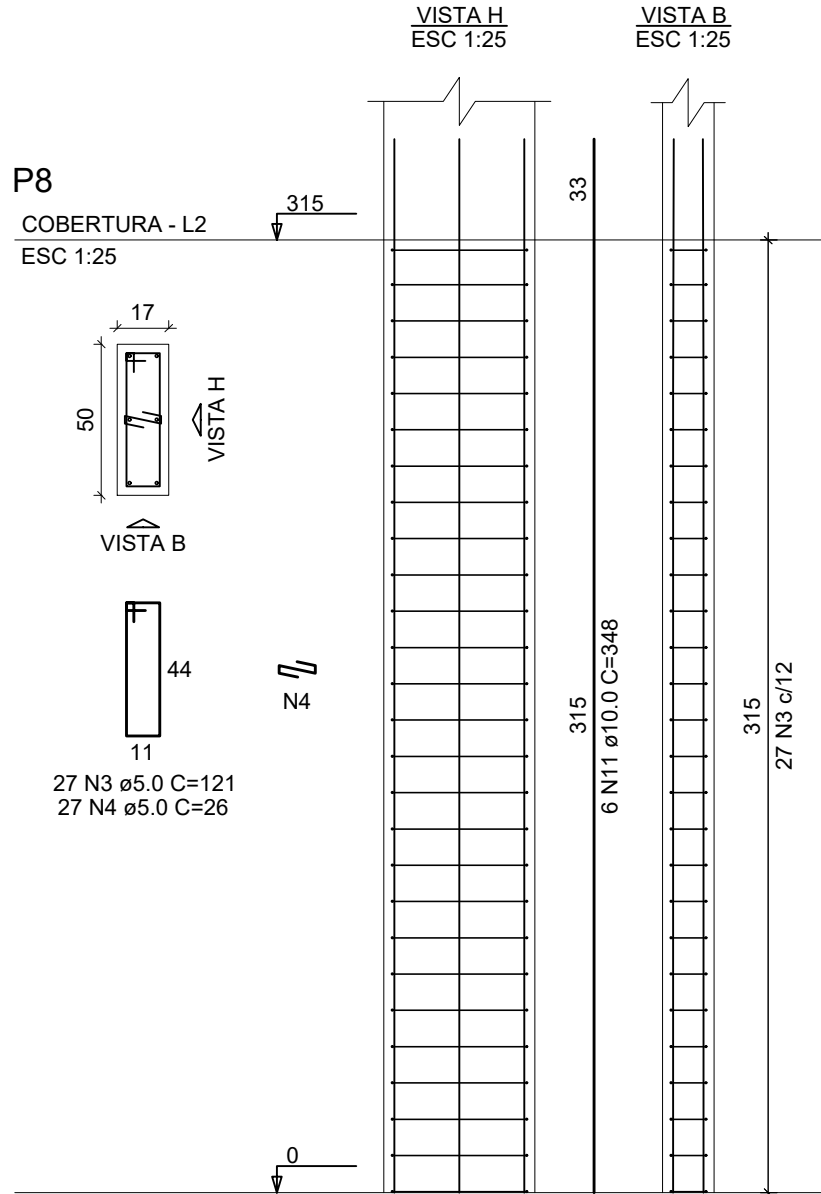
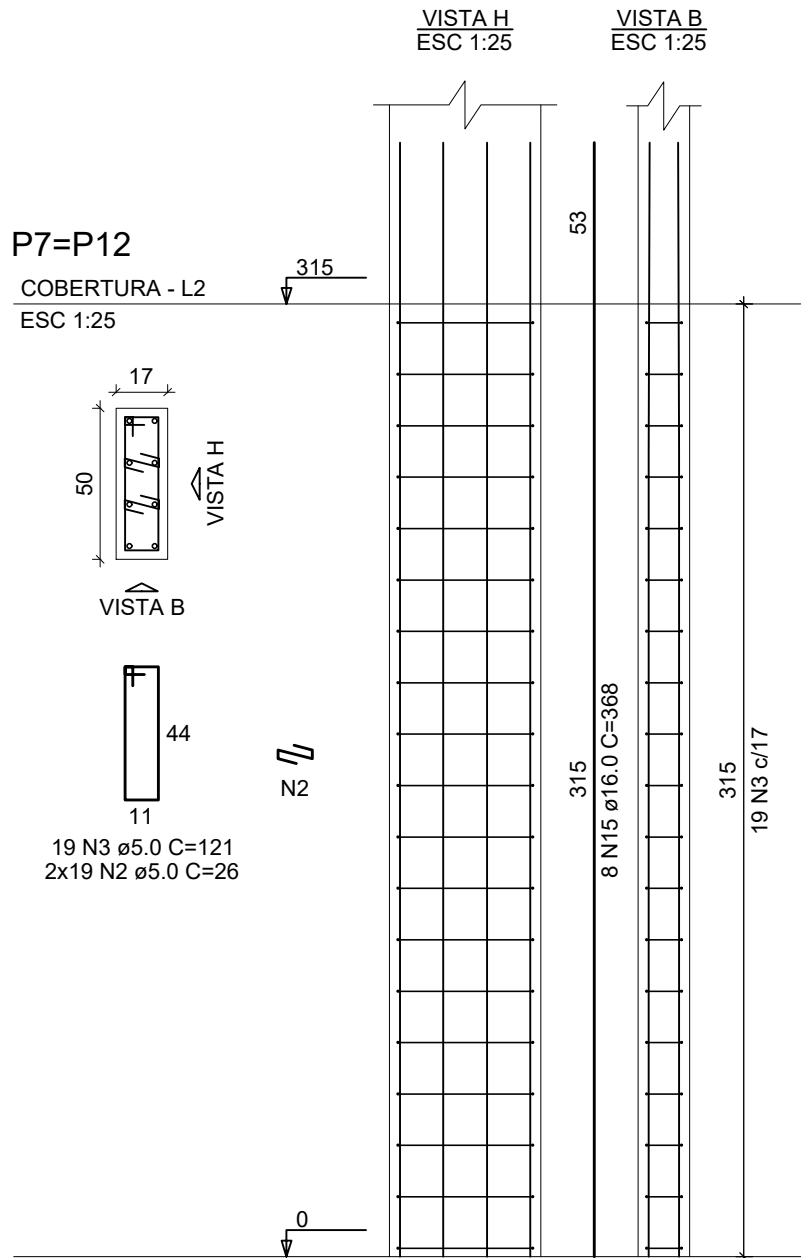
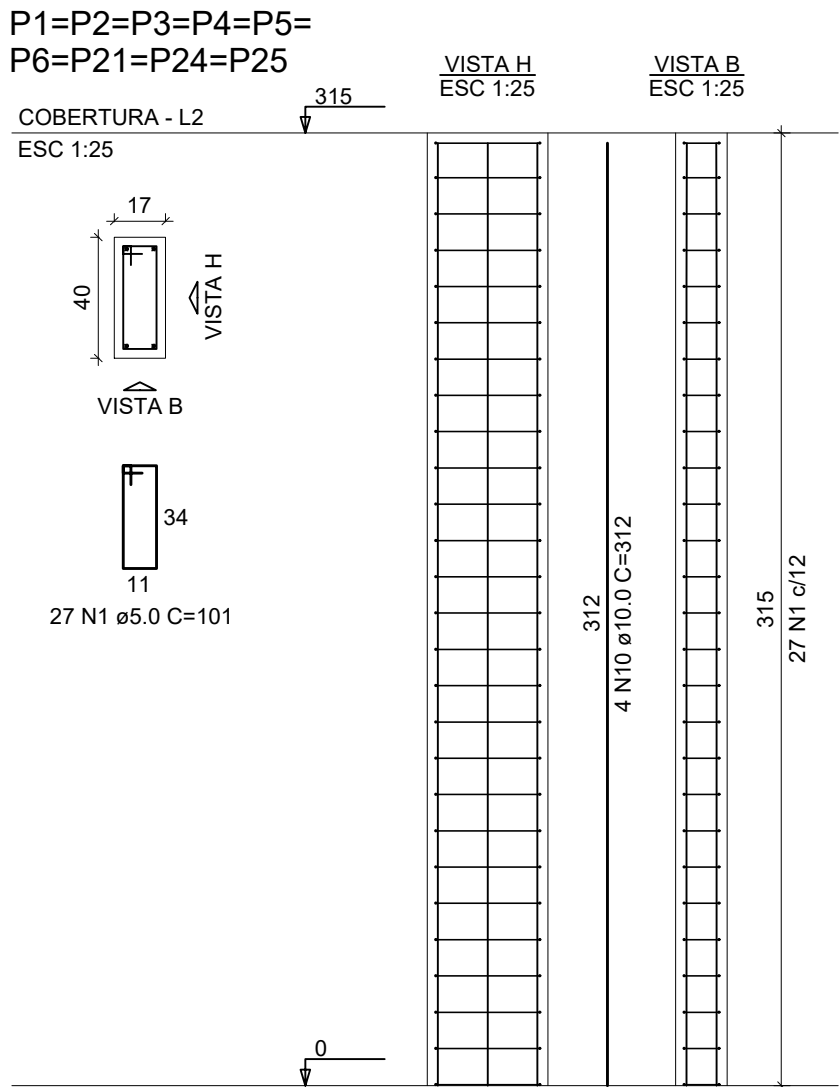
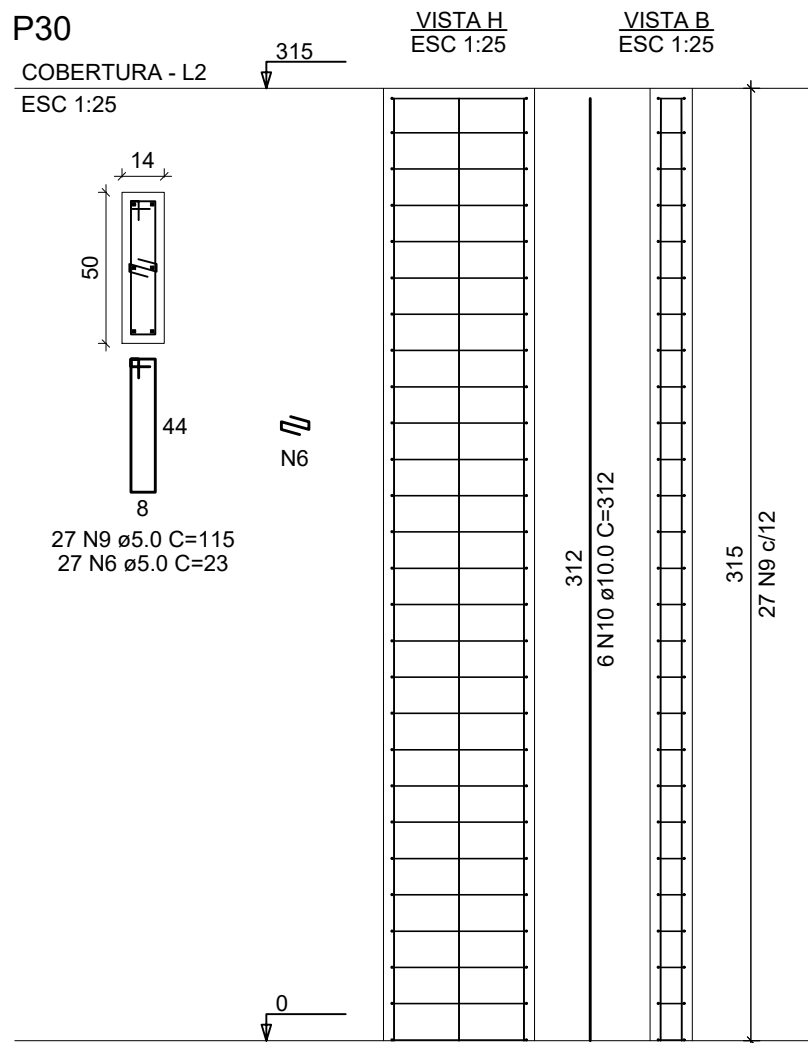
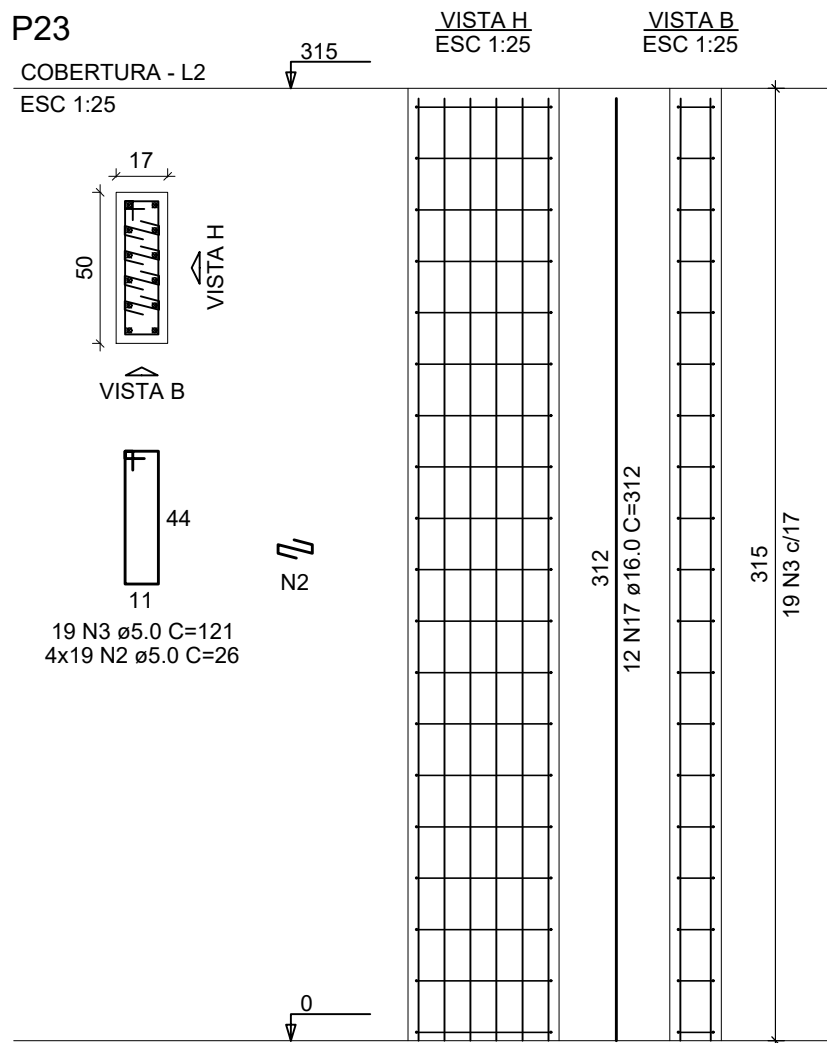
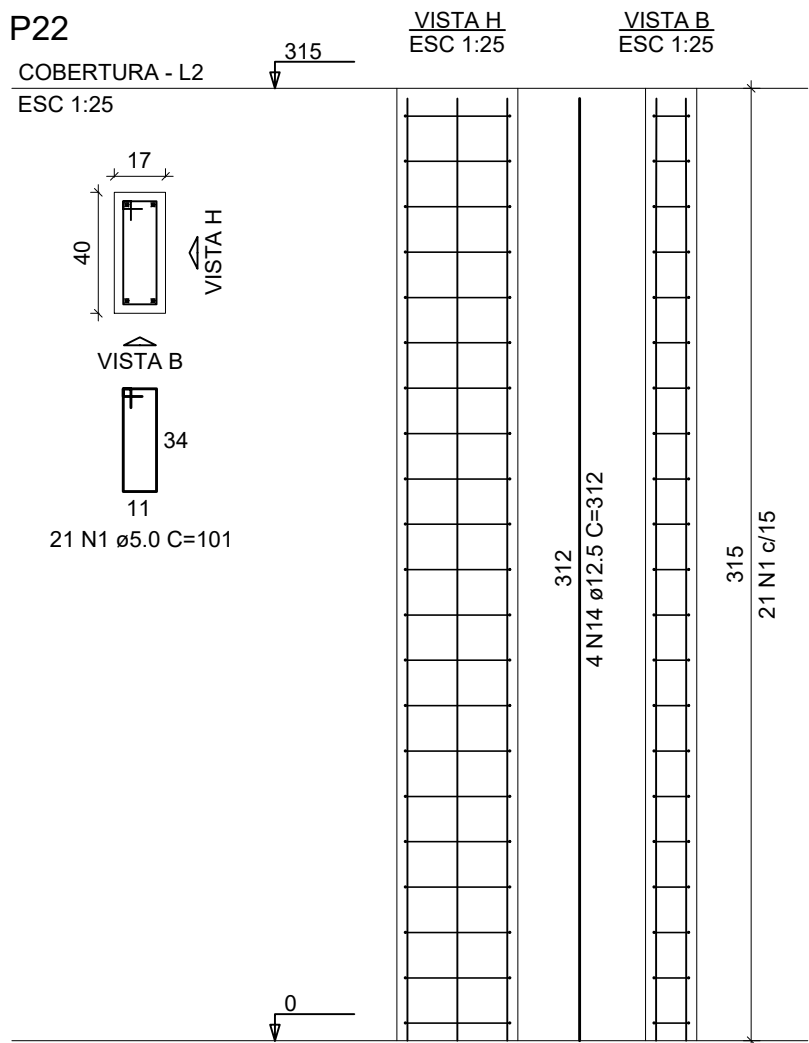
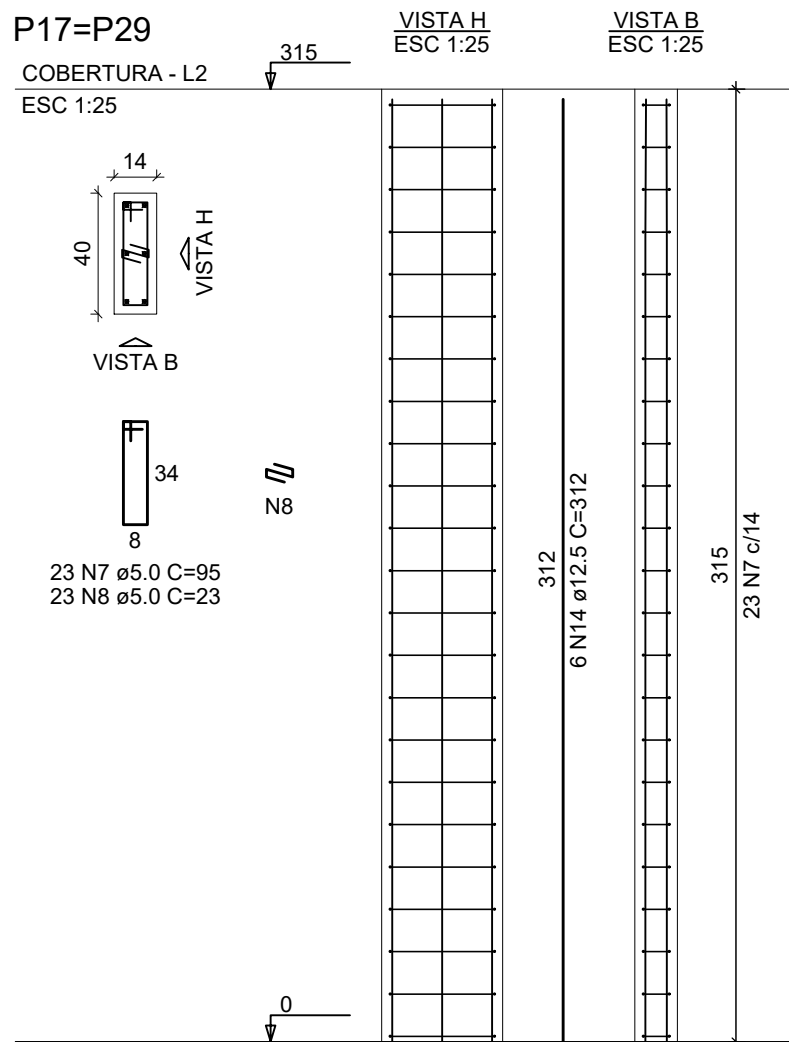
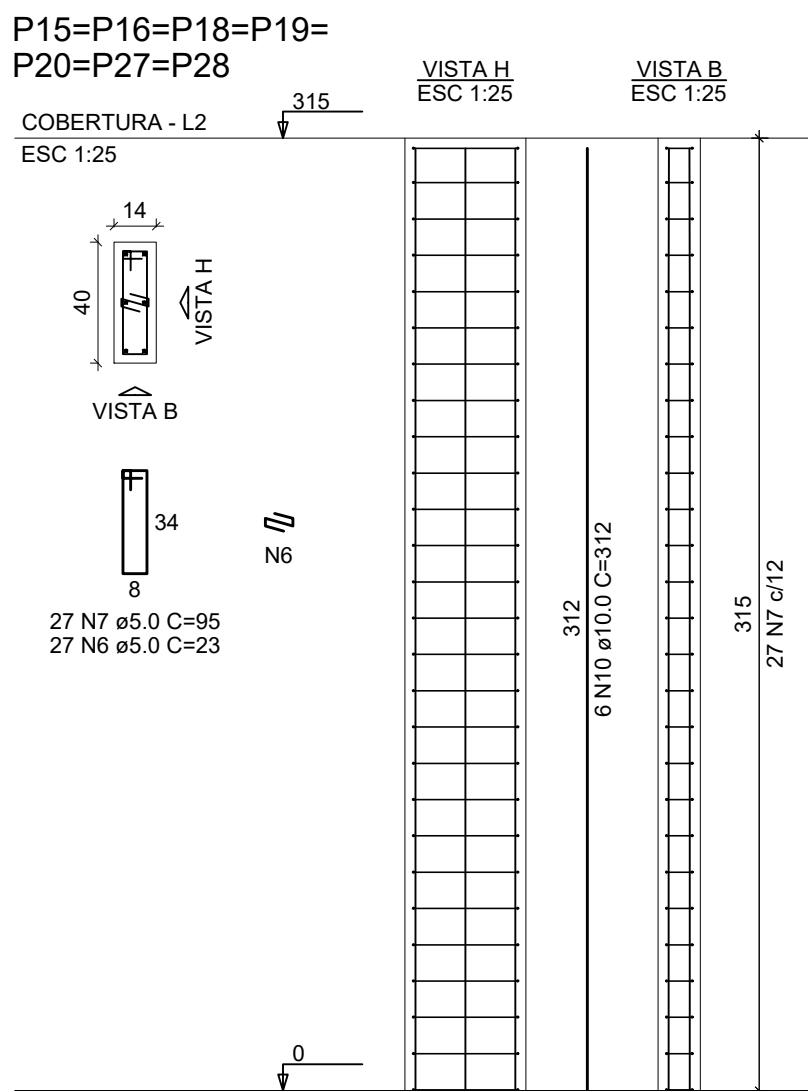
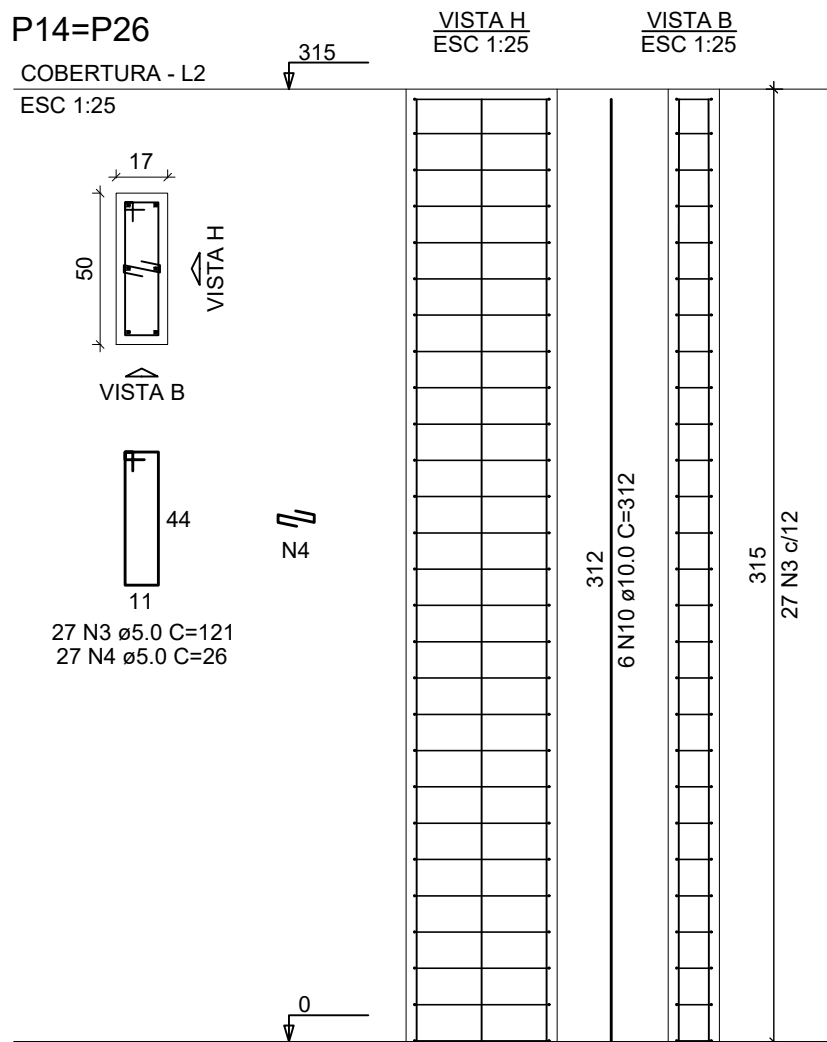
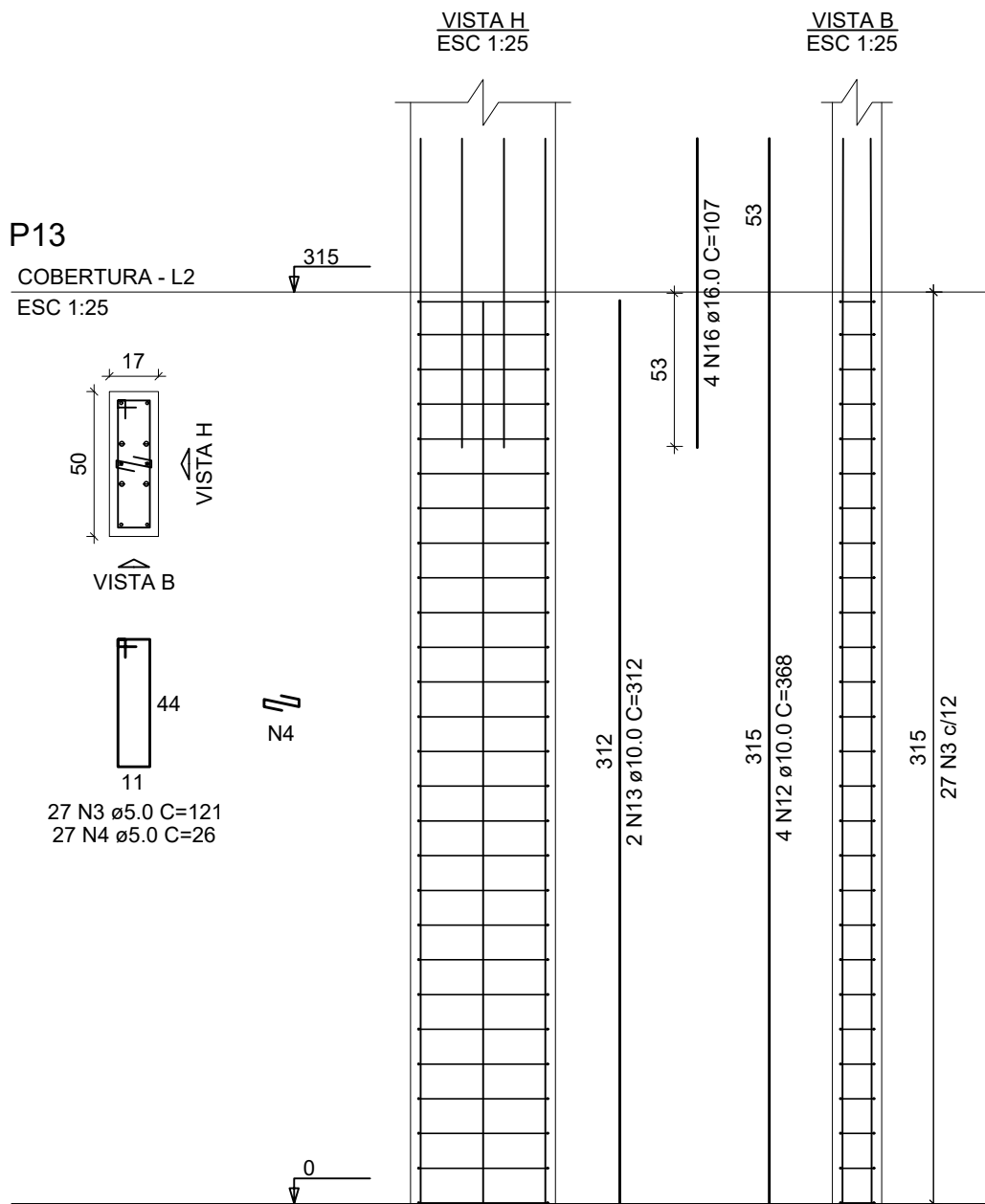


PENAL	CDR	ESP.
1	7	0,1
2	7	0,2
3	7	0,3
4	7	0,4
5	7	0,5
6	7	0,6
7	7	0,25
8	7	0,1
9	7	0,1
10	10	0,2
11	11	0,2
12	12	0,2
255	255	0,2



Relação de aço					
AÇO	N	DIAM (mm)	QUANT	C.UNIT (cm)	C.TOTAL (cm)
CA60	1	5.0	264	101	26664
	2	5.0	152	26	3952
	3	5.0	165	121	19965
	4	5.0	108	26	2808
	5	5.0	81	95	7695
	6	5.0	216	23	4968
	7	5.0	235	95	22325
	8	5.0	46	23	1058
	9	5.0	27	115	3105
	10	10.0	108	312	33696
CA50	11	10.0	6	348	2088
	12	10.0	4	368	1472
	13	10.0	2	312	624
	14	12.5	16	312	4992
	15	16.0	16	368	5888
	16	16.0	4	107	428
	17	16.0	12	312	3744

Resumo do aço			
AÇO	DIAM (mm)	C.TOTAL (m)	PESO (kg)
CA50	10.0	378.8	233.7
	12.5	49.9	48.1
CA60	16.0	100.6	158.7
	5.0	925.4	142.5
PESO TOTAL (kg)			
CA50	440.5		
CA60	142.5		
Volume de concreto (C-30) = 6.51 m³			
Área de forma = 110.31 m²			



PREFEITURA MUNICIPAL DE BRUSQUE

SECRETARIA DE INFRAESTRUTURA ESTRATÉGICA - SIE
ADMINISTRAÇÃO - 2025-2028

CMEI ELSA BODENMULLER DE MARCHI I

R. Adalina Debatin, 75 - Águas Claras, Brusque - SC, 88353-610

CONTRATANTE: PREFEITURA MUNICIPAL DE BRUSQUE
CNPJ: 83.102.343/0001-94

RESP. TÉCNICO: PEDRO LUCAS CARDOSO CONCEIÇÃO
CREA 223.181-6

Contatos PM Brusque:
0xx(47) 4042-0200

Contatos Setor:
Ramal 20476

PROJETO ESTRUTURAL
ARMADURAS DOS PILARES
PAVIMENTO COBERTURA

E08

ESCALA: INDICADAS REVISÃO: 00 ARQUIVO: AAF E08.PilaresCoBERTura R00 FOLHA: 01/01