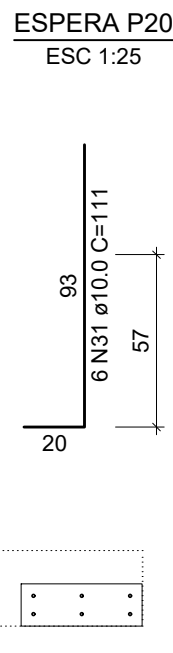
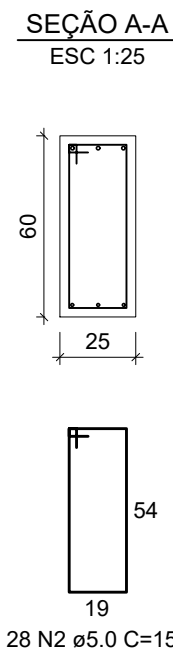
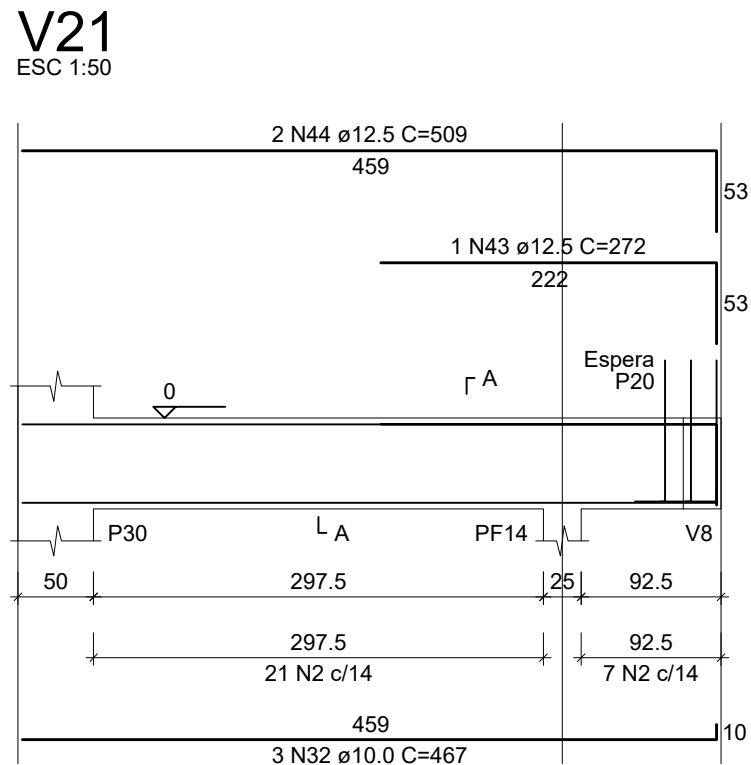
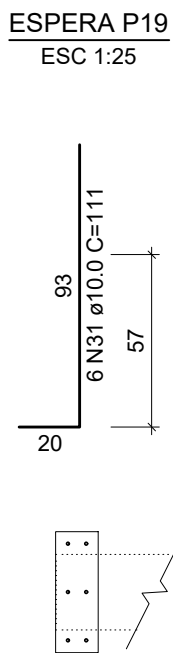
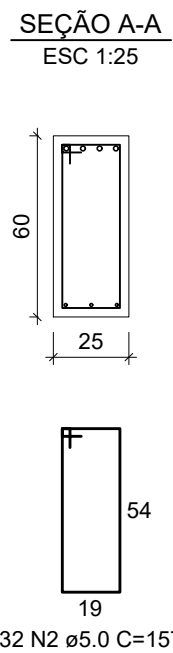
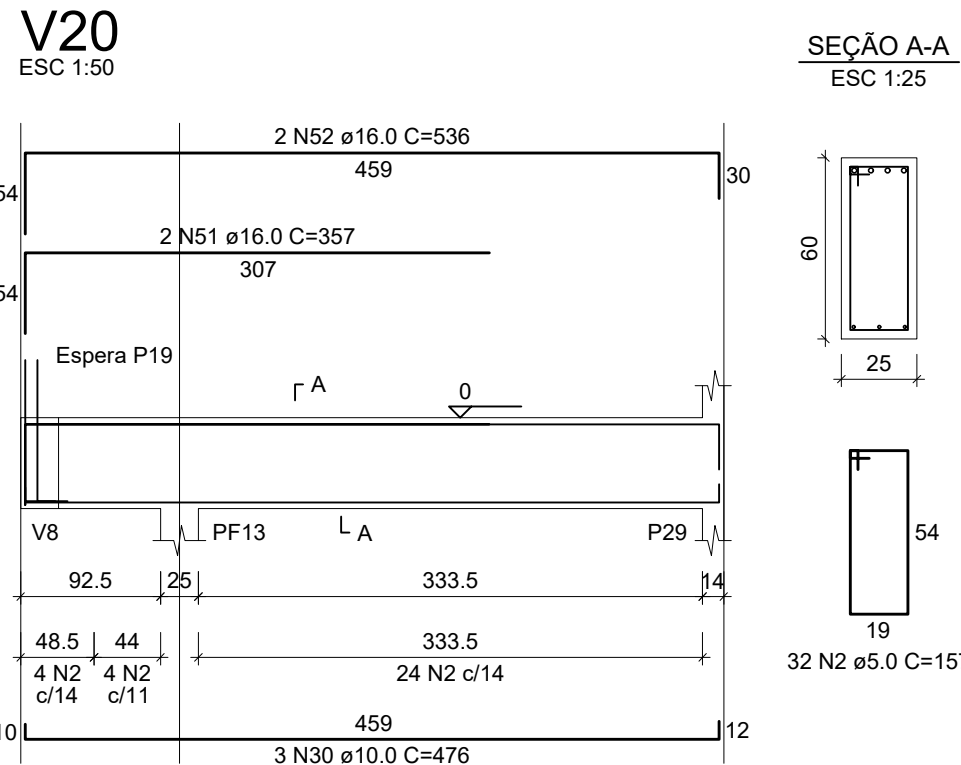
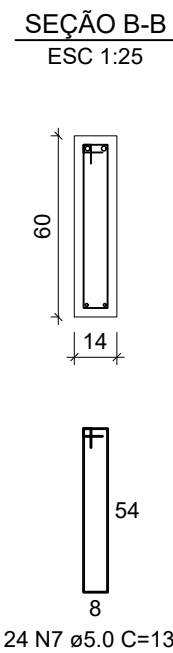
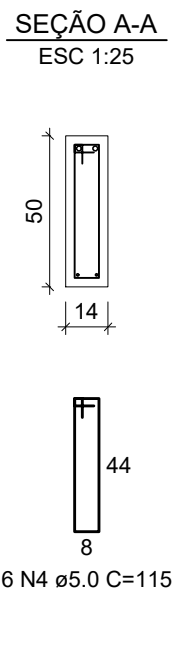
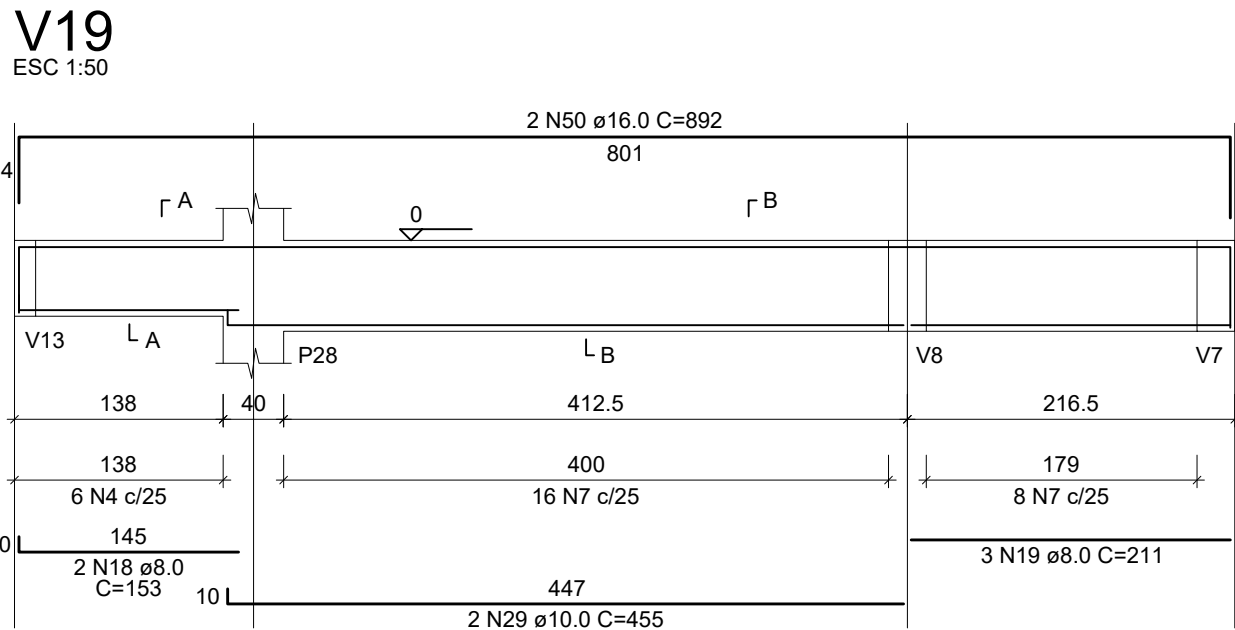
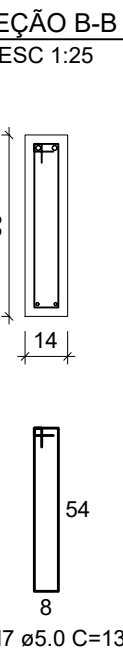
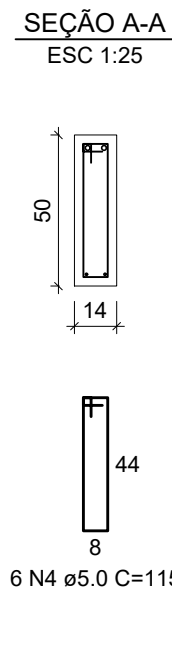
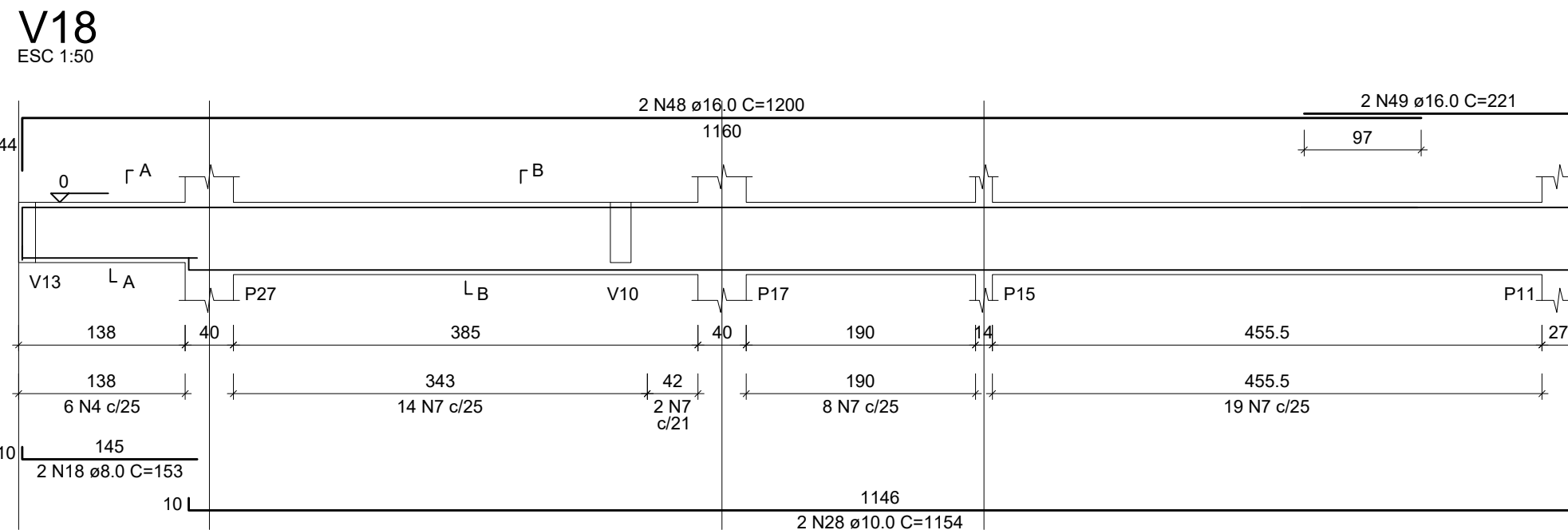
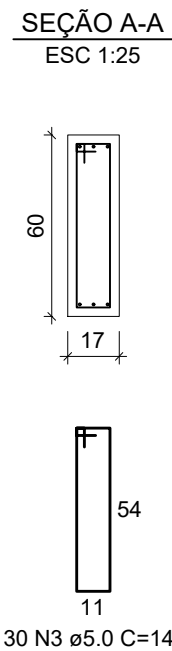
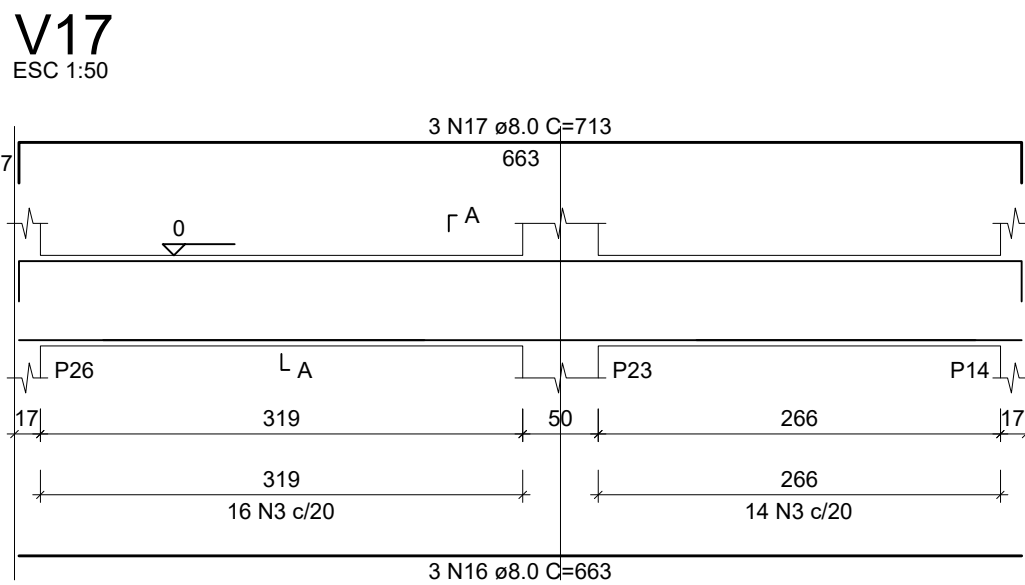
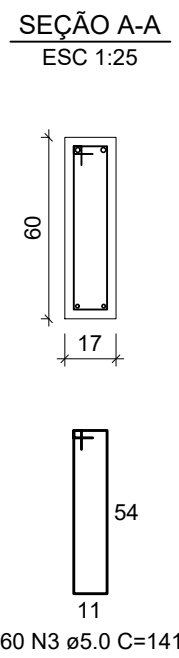
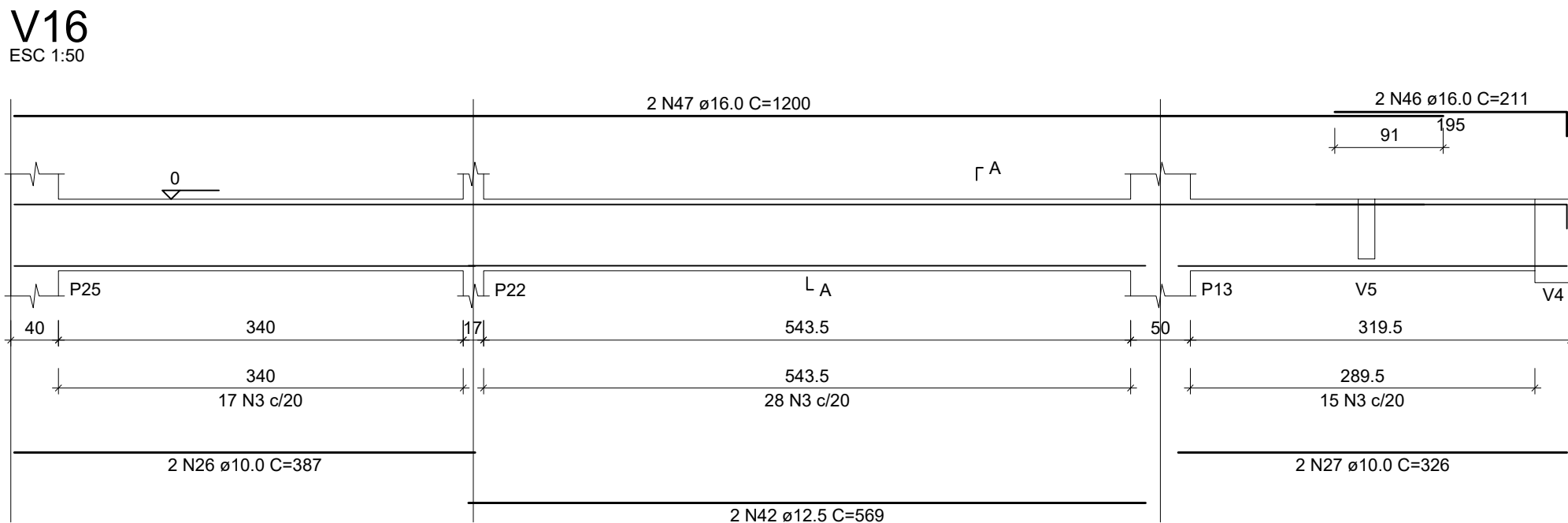
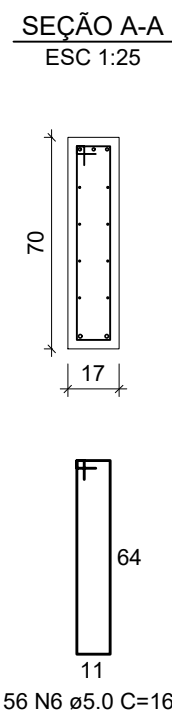
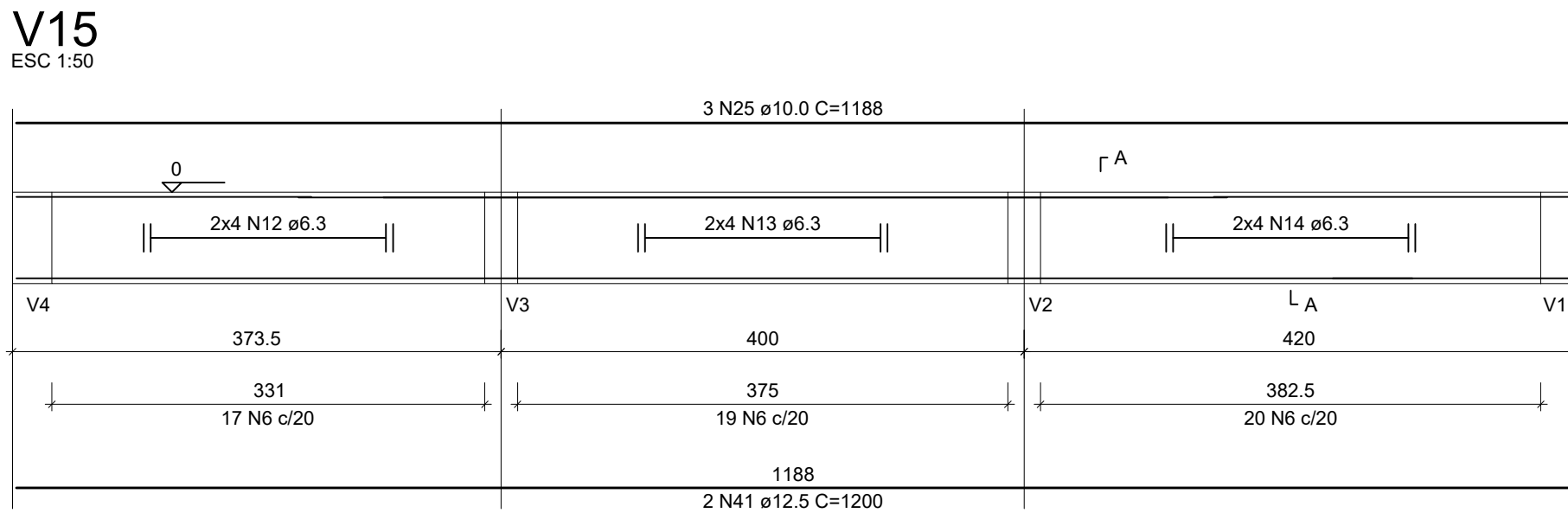
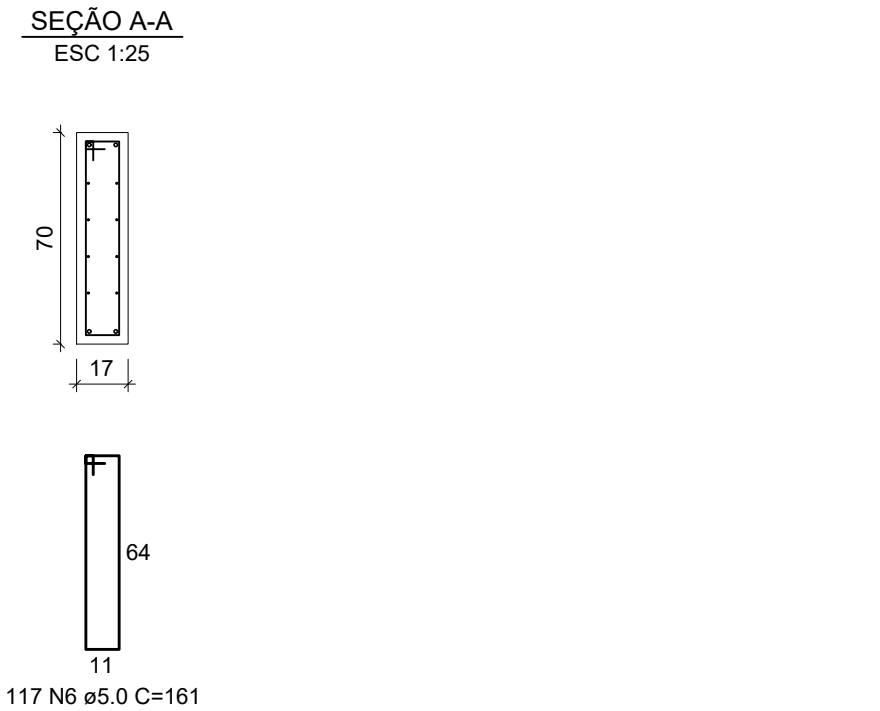
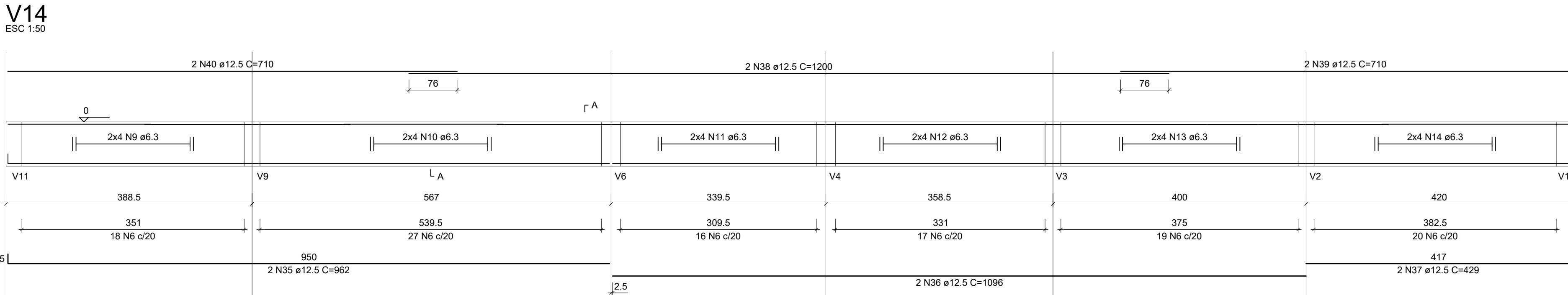


Relação de aço					
AÇO	N	DIAM (mm)	QUANT	C.UNIT (cm)	C.TOTAL (cm)
CA60	1	5.0	7	177	1239
	2	5.0	86	157	13502
	3	5.0	154	141	21714
	4	5.0	21	115	2415
	5	5.0	2	242	484
CA50	6	5.0	173	161	27853
	7	5.0	67	135	9045
	8	6.3	12	915	1380
	9	6.3	8	corr	3160
	10	6.3	8	corr	4712
	11	6.3	8	corr	2904
	12	6.3	16	corr	6080
	13	6.3	16	corr	6704
	14	6.3	16	corr	6816
	15	8.0	2	242	484
	16	8.0	3	663	1989
	17	8.0	3	713	2139
	18	8.0	4	153	612
	19	8.0	3	211	633
	20	10.0	4	121	484
	21	10.0	2	1060	2160
	22	10.0	2	302	604
	23	10.0	2	1200	2400
	24	10.0	2	329	658
	25	10.0	3	1188	3564
	26	10.0	2	387	774
	27	10.0	2	326	652
	28	10.0	2	1154	2308
	29	10.0	2	455	910
	30	10.0	3	476	1428
	31	10.0	12	111	1332
	32	10.0	3	467	1401
	33	12.5	3	126	378
	34	12.5	2	388	776
	35	12.5	2	962	1924
	36	12.5	2	1096	2192
	37	12.5	2	429	858
	38	12.5	2	1200	2400
	39	12.5	2	710	1420
	40	12.5	2	710	1420
	41	12.5	2	1200	2400
	42	12.5	2	569	1138
	43	12.5	1	272	272
	44	12.5	2	509	1018
	45	16.0	2	577	1154
	46	16.0	2	211	422
	47	16.0	2	1200	2400
	48	16.0	2	1200	2400
	49	16.0	2	221	442
	50	16.0	2	892	1784
	51	16.0	2	357	714
	52	16.0	2	536	1072

Resumo do aço

AÇO	DIAM (mm)	C.TOTAL (m)	PESO (kg)
CA50	6.3	317.6	77.7
	8.0	58.6	23.1
	10.0	186.8	115.1
	12.5	162	156
CA60	16.0	103.9	164
	5.0	762.5	117.5
PESO TOTAL (kg)			
CA50		535.9	
CA60		117.5	

Volume de concreto (C-30) = 11.87 m³  
Área de forma = 155.15 m²



**FCK PARA O PROJETO = 30 MPa**

**NOTAS:**

A) PARA CONVENÇÕES, NOTAS E DETALHES TÍPICOS, CONSULTAR PRANCHA 00.  
B) ELEVAÇÕES E DIMENSÕES EM CENTÍMETROS, EXCETO ONDE INDICADO.  
C) DIFERENÇA ENTRE AS COTAS DO PROJETO E ESCALA, PREVALECEM AS COTAS DO PROJETO.

**Aprovação/revisões:**

REVISÃO	EMISSÃO INICIAL	27/11/2025
REVISÃO	DISCRIMINAÇÃO DAS REVISÕES	DATA

**OBSERVAÇÕES/CARIMBOS/APROVAÇÕES:**

**SECRETARIA DE INFRAESTRUTURA ESTRATÉGICA**

**PREFEITURA MUNICIPAL DE BRUSQUE**  
SECRETARIA DE INFRAESTRUTURA ESTRATÉGICA - SIE  
ADMINISTRAÇÃO - 2025-2028

**CMEI ELSA BODENMULLER DE MARCHI I**  
R. Adeline Debatin, 75 - Águas Claras, Brusque - SC, 88353-610

Contratos PM Brusque: 0xx(47) 4042-0200

Contratos Setor: Ramal 20476

CONTRATANTE: PREFEITURA MUNICIPAL DE BRUSQUE  
CNPJ: 83.102.343/0001-94

RESP. TÉCNICO: PEDRO LUCAS CARDOSO CONCEIÇÃO  
CREA 223.181-6

**PROJETO ESTRUTURAL**  
**ARMADURAS DAS VIGAS**  
**PAVIMENTO TÉRREO**

ESCALA: INDICADAS | REVISÃO: 00 | ARQUIVO: AAE.E10.VigasTérreo02.R00 | FOLHA: 02/02

**E10**