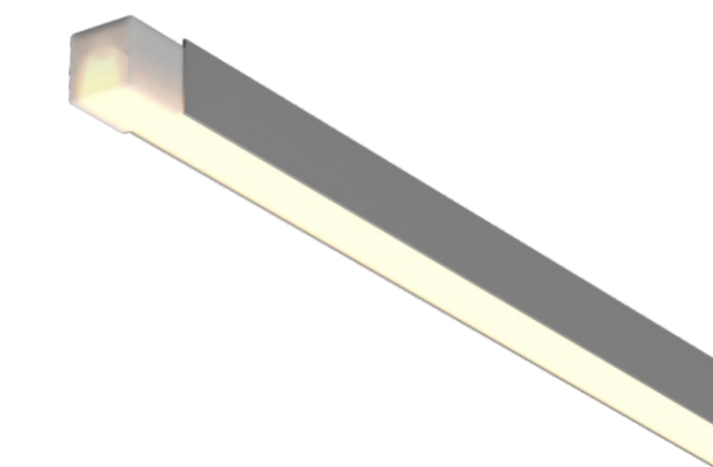
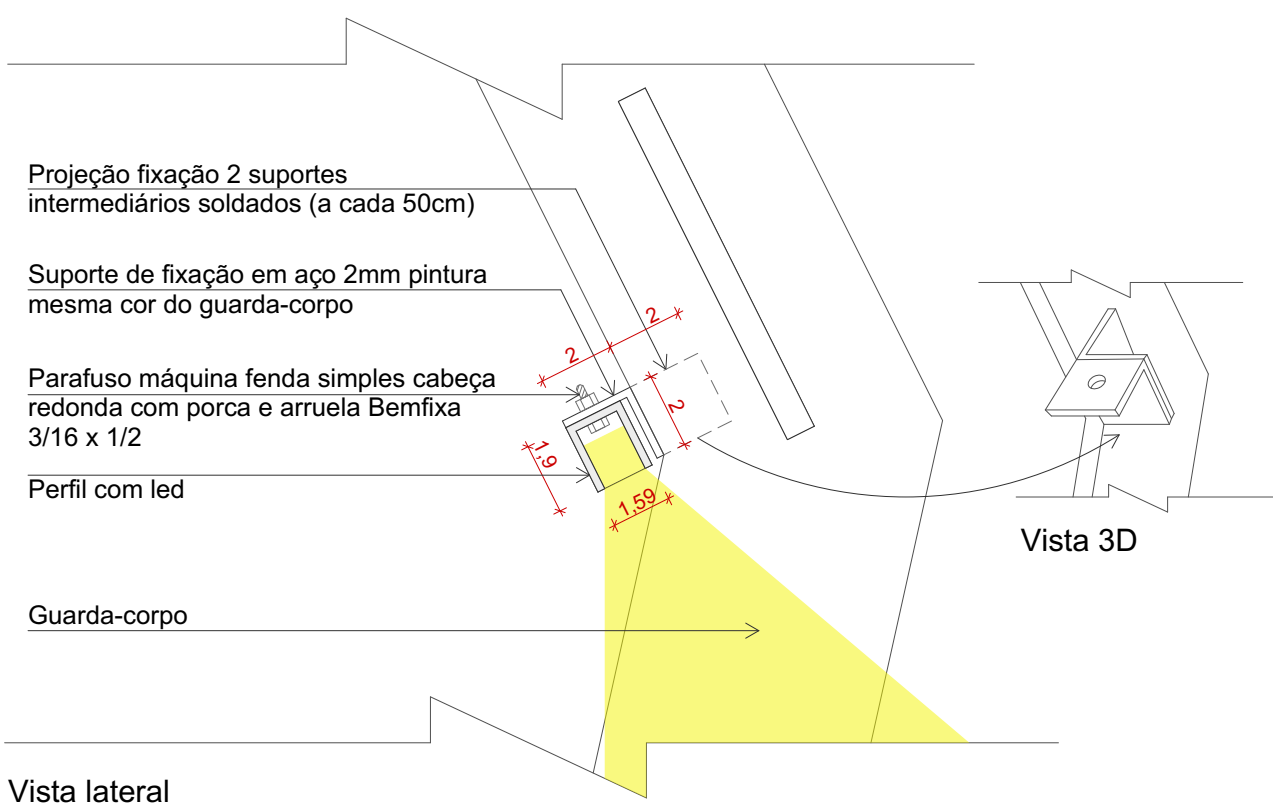
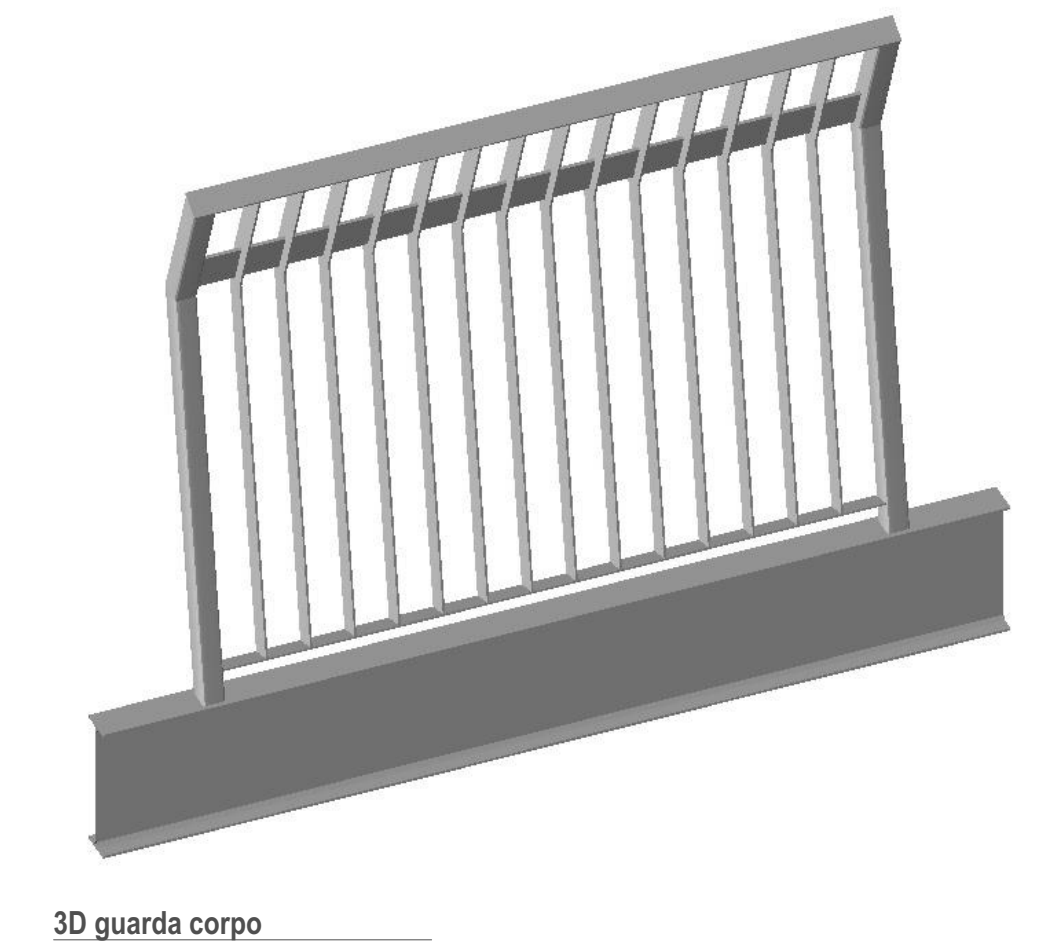
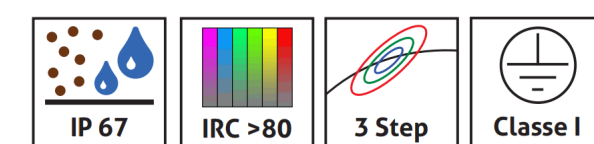


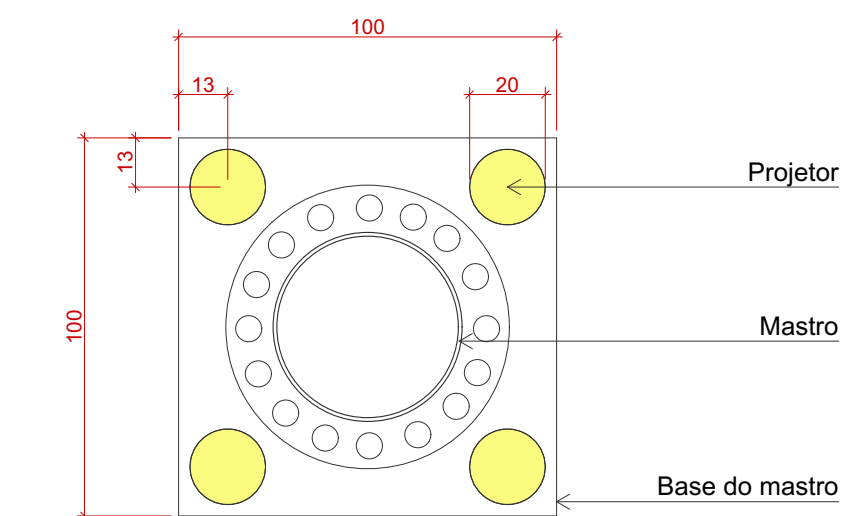
Detalhe 02 - Guarda-corpo
ESC 1:20



Perfil Power Lume Led flexível SBP-N



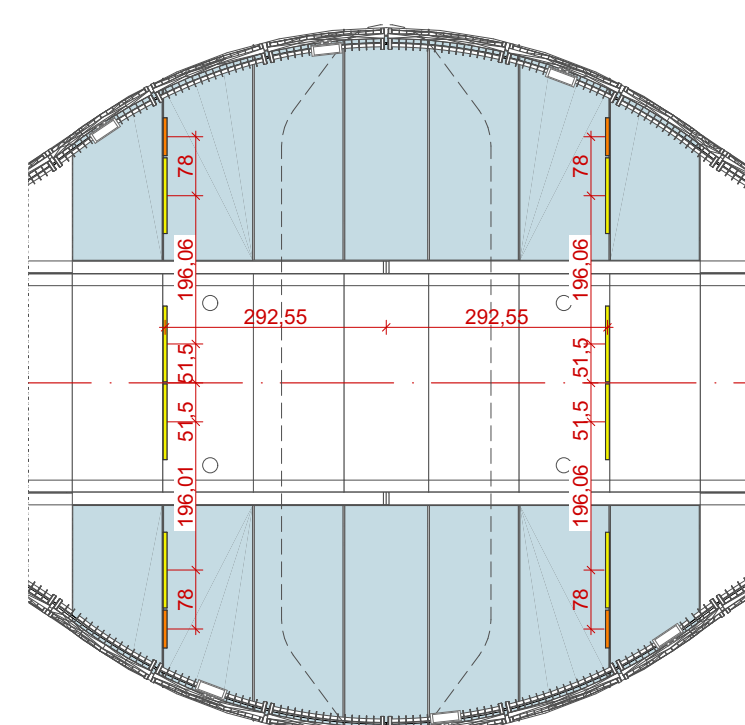
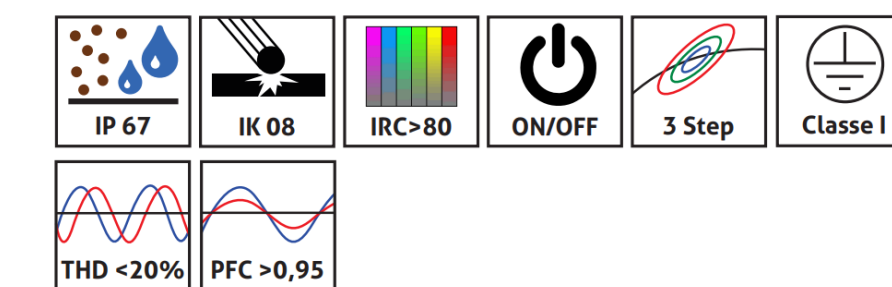
Detalhe 03 - Led linear
ESC 1:2



Detalhe 05 - Projetores
ESC 1:20

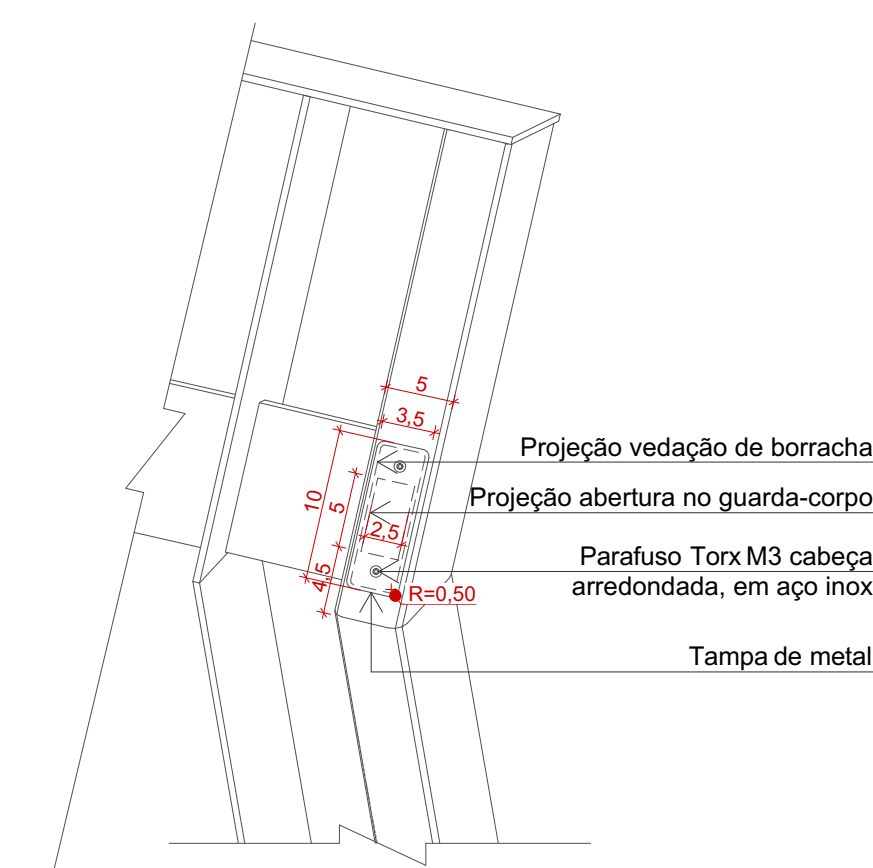
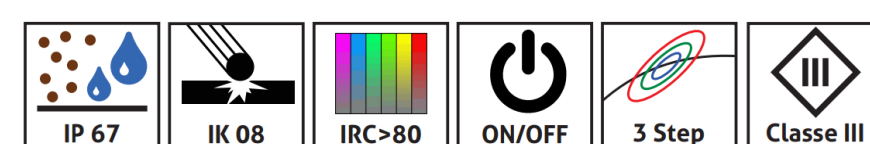


Perfil Power Lume Projektor com lentes facho PJ50W 10G RGBW



Luminária PLSS18W 50cm 04 unidades
Luminária PLSS36W 100cm 08 unidades

Detalhe 06 - Projetores da coluna
ESC 1:100



Obs: Deverá ser instalado uma fonte a cada 3 módulos de guarda-corpo.

Detalhe 07 - Acesso fonte led
ESC 1:5

PROJETO EXECUTIVO		LIMA & LIMA arquitetos	REVISÃO
CLIENTE	ACIJS		ALEF
CONTEÚDO	Detalhes 01, 02, 03, 05, 06 e 07	PRANCHA	3/5
Rua João Piccoli, 322 - Centro, Jaraguá do Sul/SC - CEP 89251-590 Fone/Fax 3275-1404 - contato@limaelima.com.br - www.limaelima.com.br		PROJETO	943
		EDSON LIMA ARQUITETO E URBANISTA CAU A17353-3	DATA 29/01/2026
		ALEF VENDRAMIM ARQUITETO E URBANISTA CAU A254708-3	
		RONALDO LIMA ARQUITETO E URBANISTA CAU A19011-0	
		JENYFER TONIAZZO ARQUITETA E URBANISTA CAU A290842-5	