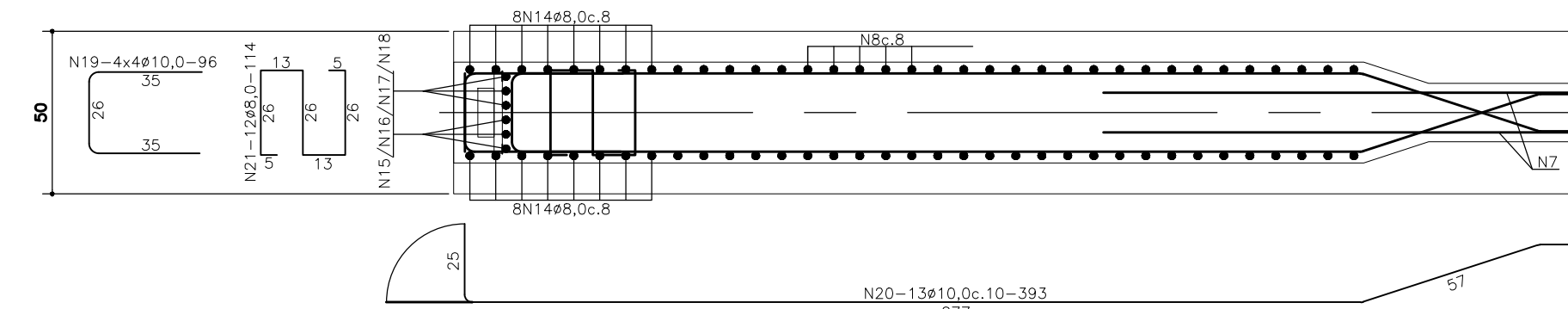
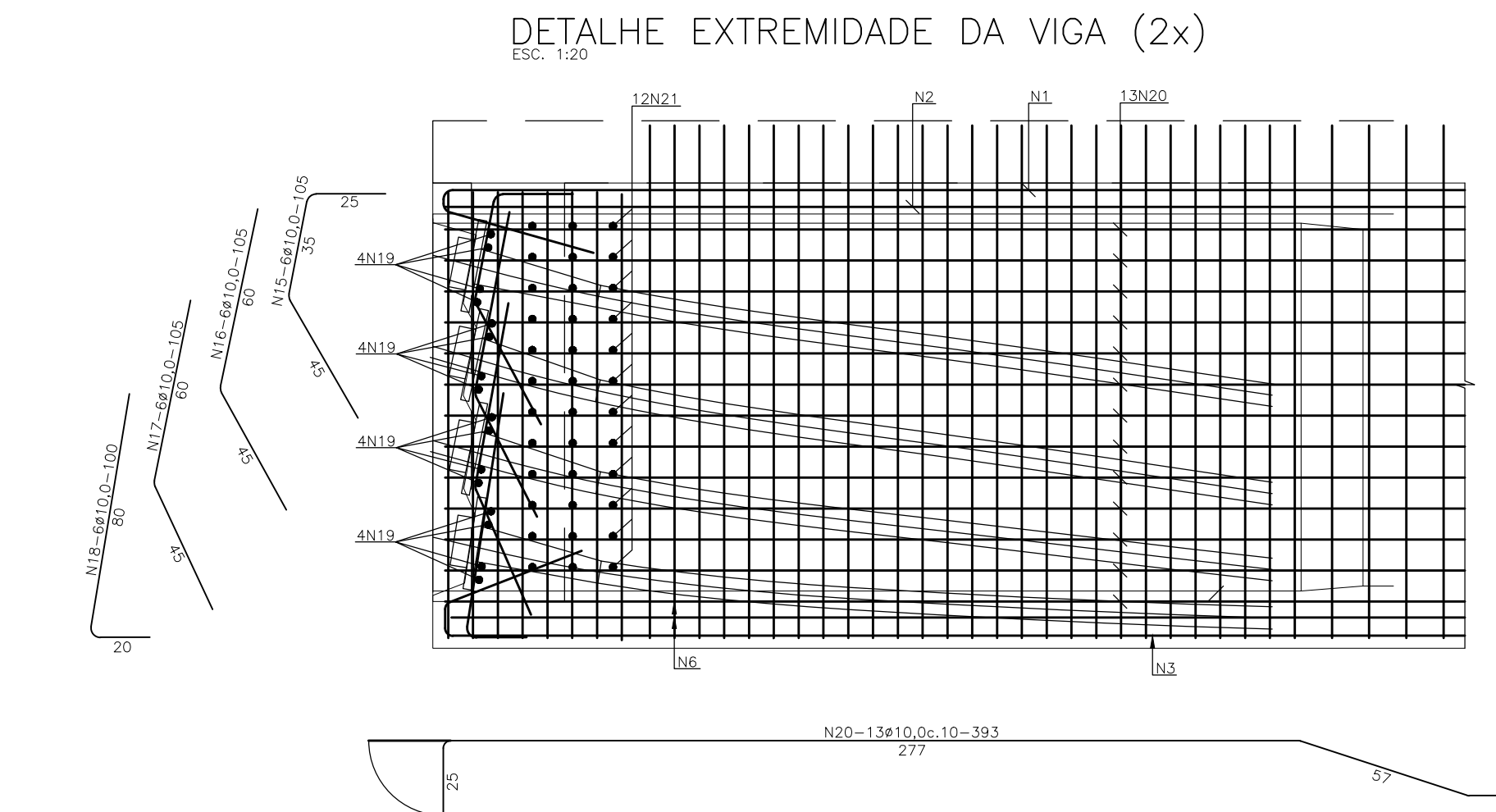
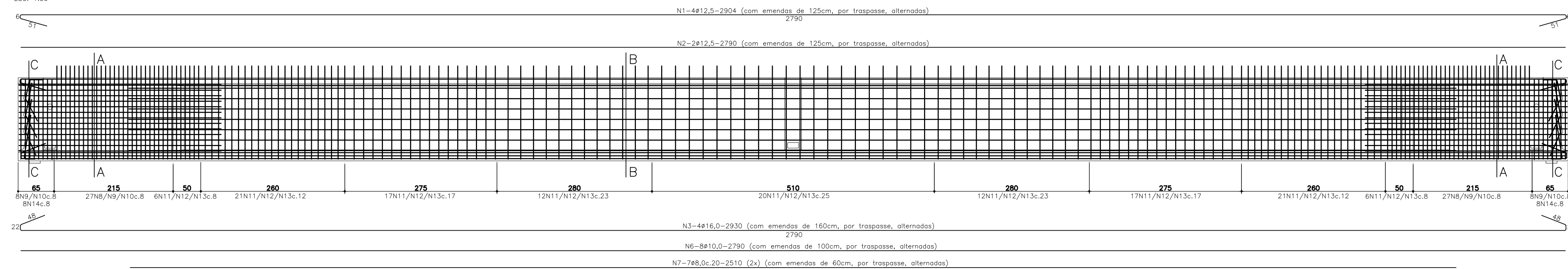


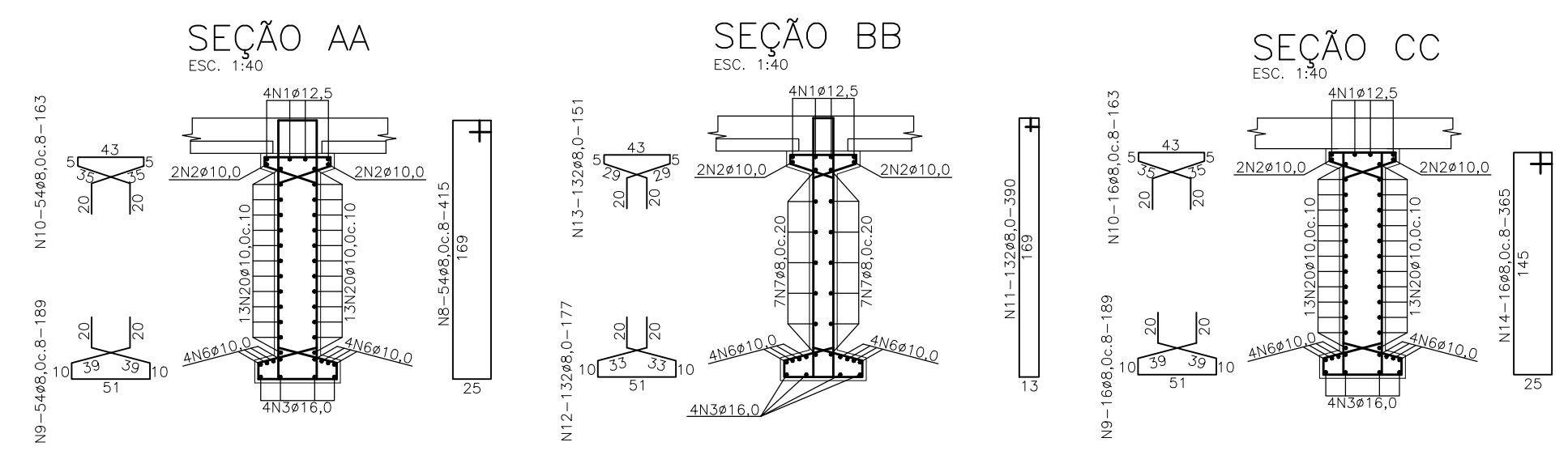
ARMAÇÃO AÇO DOCE LONGARINAS DE 28,00m (40x)



N	Diam. (mm)	Quant.	Comprimento unitário	Comprimento total
1	12,5	160	COR	513140
2	12,5	80	COR	246450
3	16,0	160	COR	531200
6	10,0	320	COR	967200
7	8,0	560	COR	1475860
8	8,0	2160	415	896400
9	8,0	2800	189	529200
10	8,0	2800	163	456400
11	8,0	5280	390	2059200
12	8,0	5280	177	934560
13	8,0	5280	151	797280
14	8,0	640	365	233600
15	10,0	480	105	50400
16	10,0	480	105	50400
17	10,0	480	105	50400
18	10,0	480	100	48000
19	10,0	1280	96	122880
20	10,0	2080	393	817440
21	8,0	960	114	109440
22	10,0	320	254	81280
23	10,0	480	44	21120
24	6,3	80	235	18800
25	10,0	480	75	36000
26	12,5	2560	402	1029120

RESUMO DO AÇO

AÇO CA-50/60	φ	Comprimento (cm)	kg/m	Peso (kg)
	6,3	18800	0,245	46
	8,0	7491940	0,395	29593
	10,0	2245120	0,617	13852
	12,5	1788710	0,963	17225
PESO TOTAL				69098

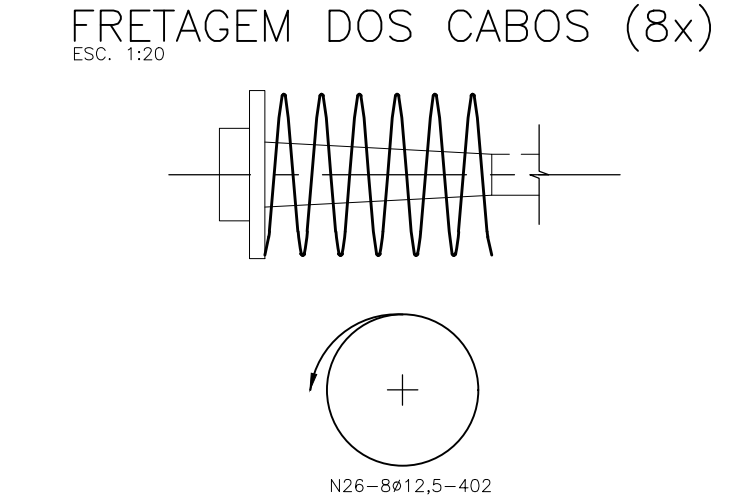
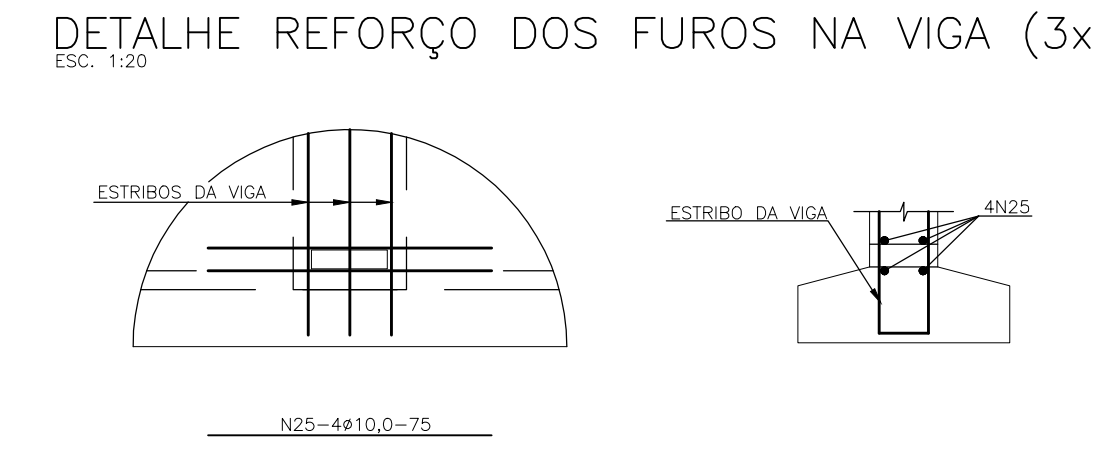
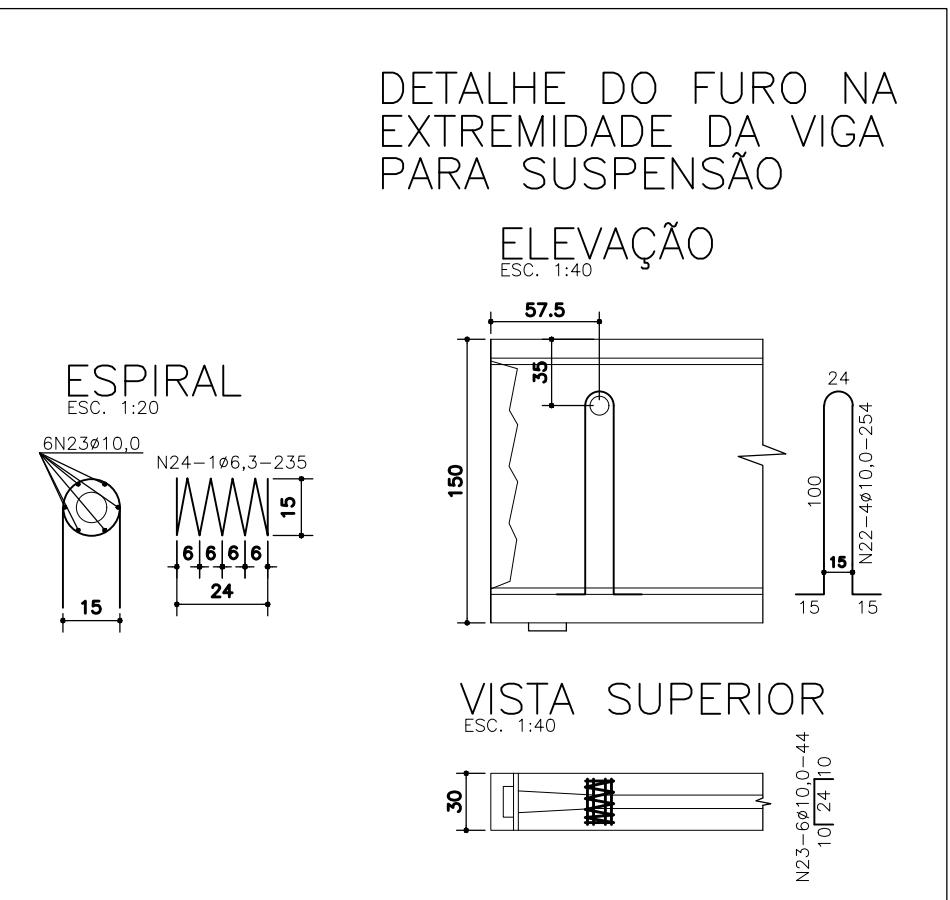


CURVATURA DO AÇO CA-50

$CB = b + 2a + 2c$

Ø	r (mm)	x (cm)	a (cm)
12,5	31,5	4,4	6
16,0	40	5,6	7,5
20,0	80	10	14
25,0	100	12,5	15,7

* CB = COMPRIMENTO DA BARRA



- Notas:**
- 1- Classe de Agressividade Ambiental = II (NBR 6118/14)
 - 2- Resistências Características dos Concretos
Longarinas em Concreto Protendido $f_{ck}=40$ MPa
Elementos em Concreto Armado $f_{ck}=30$ MPa
 - 3- Cobrimento das armaduras em mm
Longarinas em Concreto Protendido - $c=30$
Vigas - $c=30$
Blocos e pilares - $c=45$
Lajes e placas - $c=25$
 - 4- Trem Tipo Classe 45 da NBR 7188

PROJETO:	PROJETO ESTRUTURAL EXECUTIVO	ESCALA:	INDICADA	DATA:	OUTUBRO/2022	FOLHA:	
REVISÃO:	00	DATA:	05/10/2022	E M I S S Ã O			
DESENHO:		REFERÊNCIA:	ARMADURA PASSIVA LONGARINAS (40x)				