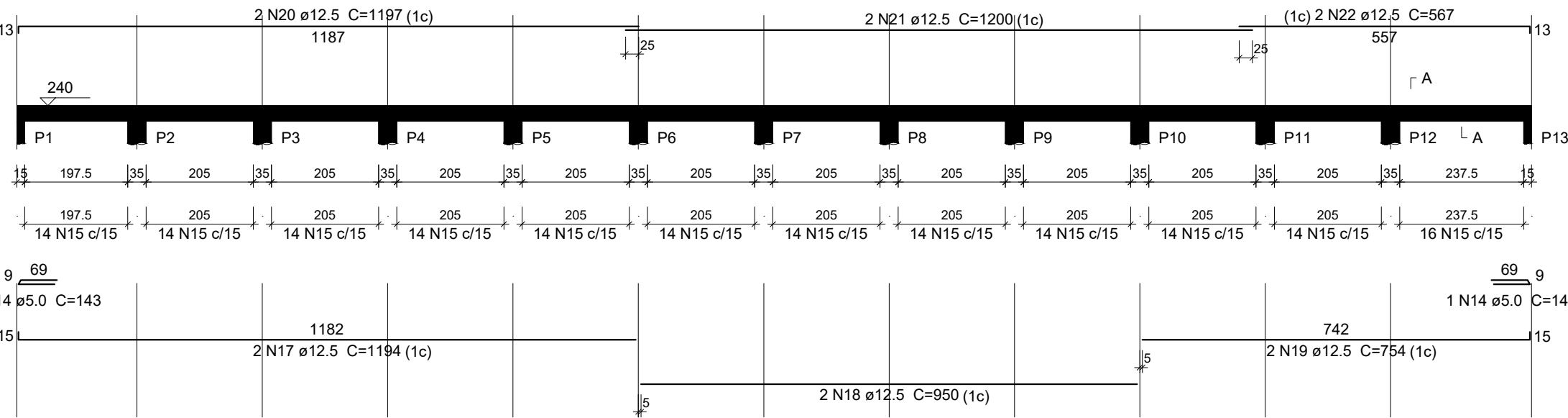


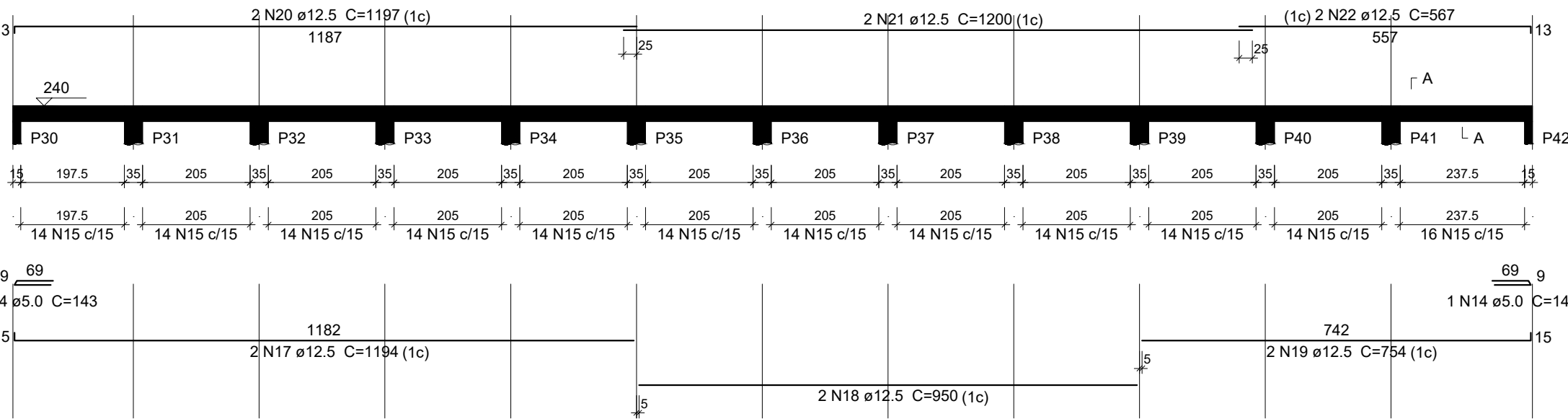
VR-1

ESC 1:100



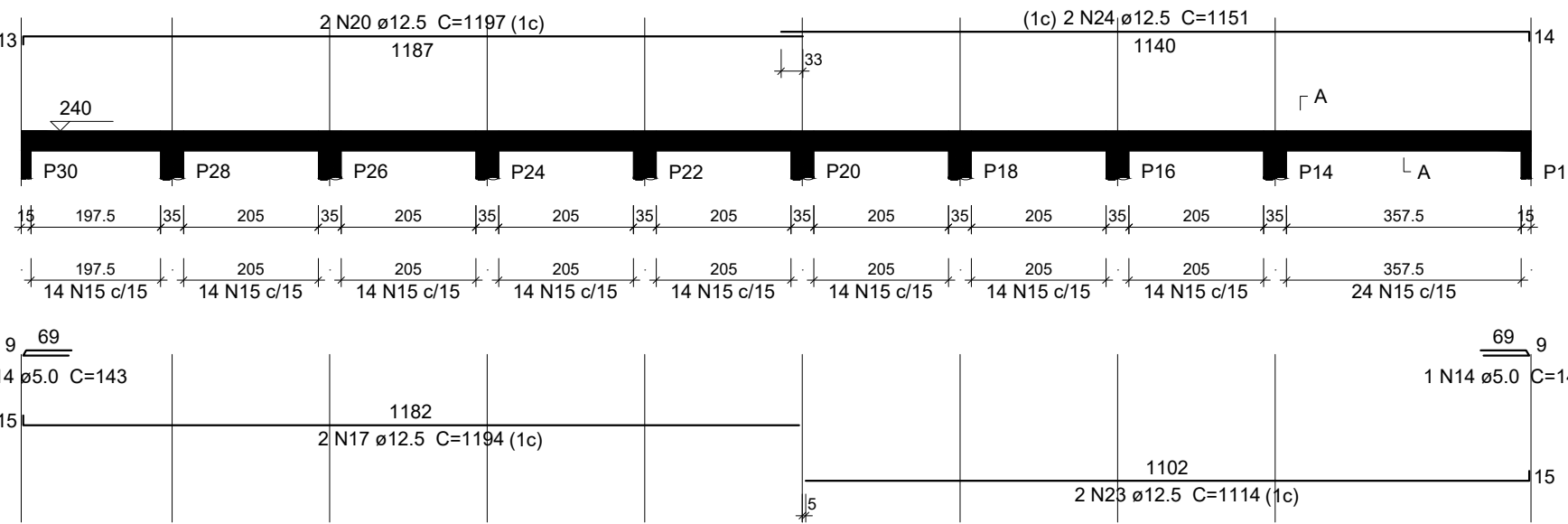
VR-2

ESC 1:100



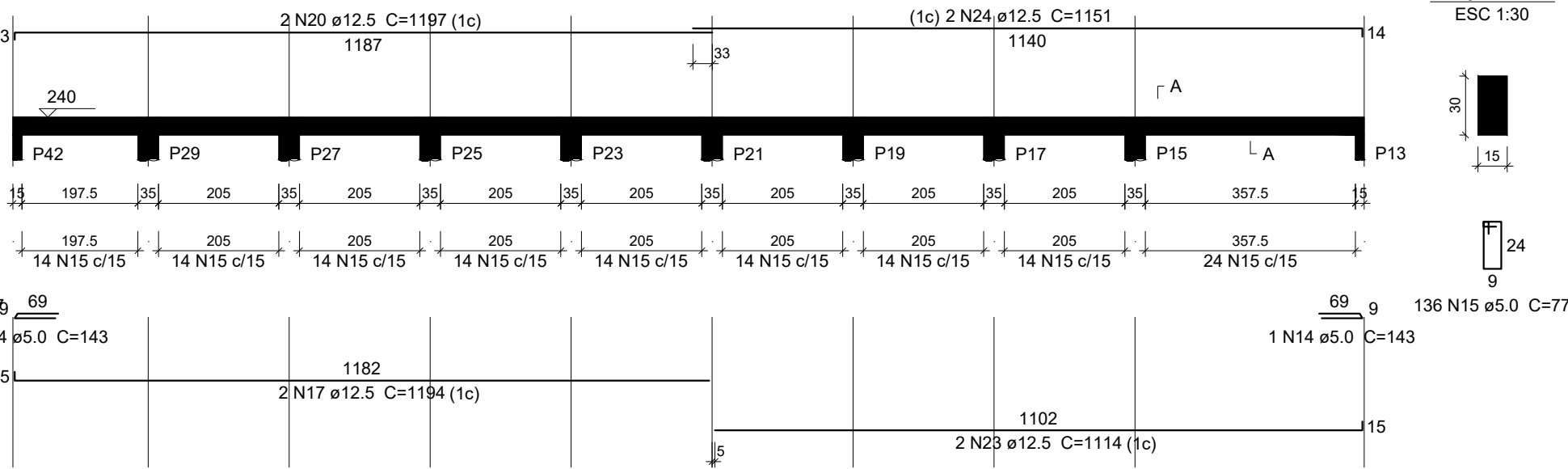
VR-3

ESC 1:100



VR-4

ESC 1:100



Relação do aço

AÇO	N	DIAM (mm)	QUANT	C.UNIT (cm)	C.TOTAL (cm)
CA60	13	5.0	684	109	74556
	14	5.0	8	143	1144
CA50	15	5.0	612	77	47124
	16	12.5	252	237	59724
	17	12.5	8	1194	9552
	18	12.5	4	950	3800
	19	12.5	4	754	3016
	20	12.5	8	1197	9576
	21	12.5	4	1200	4800
	22	12.5	4	967	2268
	23	12.5	4	1114	4456
	24	12.5	4	1151	4604

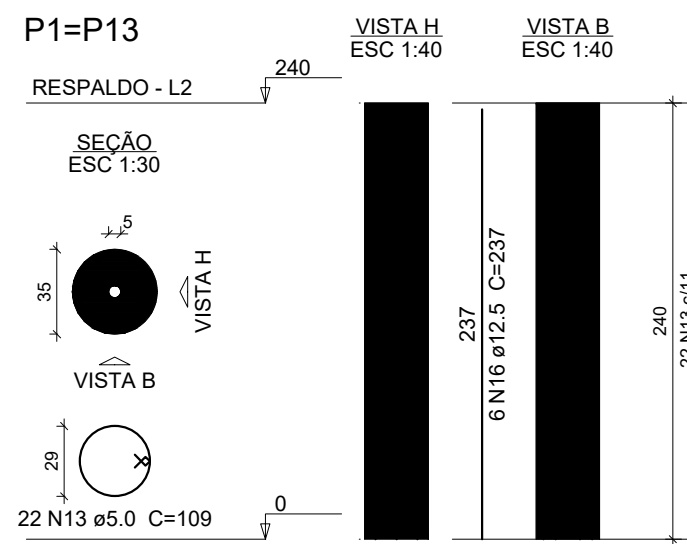
Resumo do aço

AÇO	DIAM (mm)	C.TOTAL (m)	PESO + 10 % (kg)
CA50	12.5	1018	1078.7
CA60	5.0	1228.3	208.2
PESO TOTAL (kg)			
CA50	1078.7		
CA60	208.2		

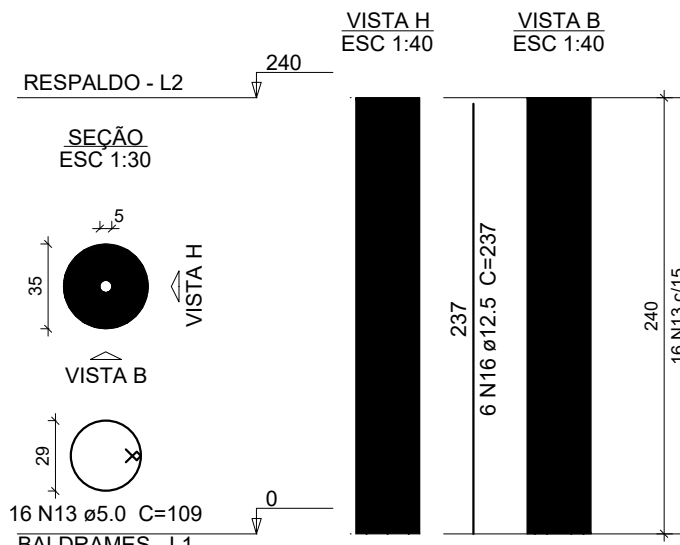
Volume de concreto (C-30) = 14.02 m³
Área de forma = 202.43 m²

DETALHES DE VIGAS DE RESPALDO

ESCALA: INDICADO



P2=P3=P4=P5=P6=P7=P8=
=P9=P10=P11=P12=P14=
=P15=P16=P17=P18=P19=
=P20=P21=P22=P23=P24=
=P25=P26=P27=P28=P29=
=P30=P31=P32=P33=P34=
=P35=P36=P37=P38=P39=
=P40=P41=P42

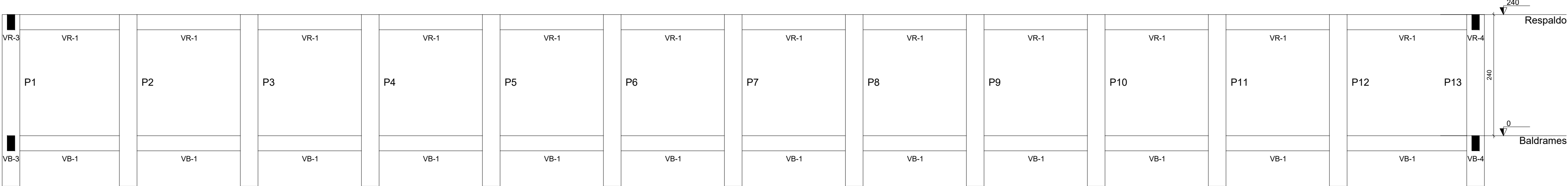


DETALHE PILARES

ESCALA: INDICADO

DETALHE 3D

ESCALA: INDICADO



Corte A-A

escala 1:50

14/11/2023	DESENVOLVIMENTO INICIAL	
	MODIFICAÇÃO	
	ASSINATURA:	
	OBRA: CONSTRUÇÃO DE MURO DA UBS VERA LÚCIA	
ZEQUEL PEREIRA DOS SANTOS ENGENHEIRO CIVIL CREA 15.12402-1/RO	CLIENTE:	PREFEITURA DO VALE DO ANARIRO
	LOCAL:	DISTRITO DE SÃO MARCOS, VALE DO ANARIRO
	MUNICÍPIO:	VALE DO ANARIRO
	TÍTULO:	PROJETO ESTRUTURAL DO MURO
CONTEUDO:	DETALHES VIGAS DE RESPALD	
	3 / 3	