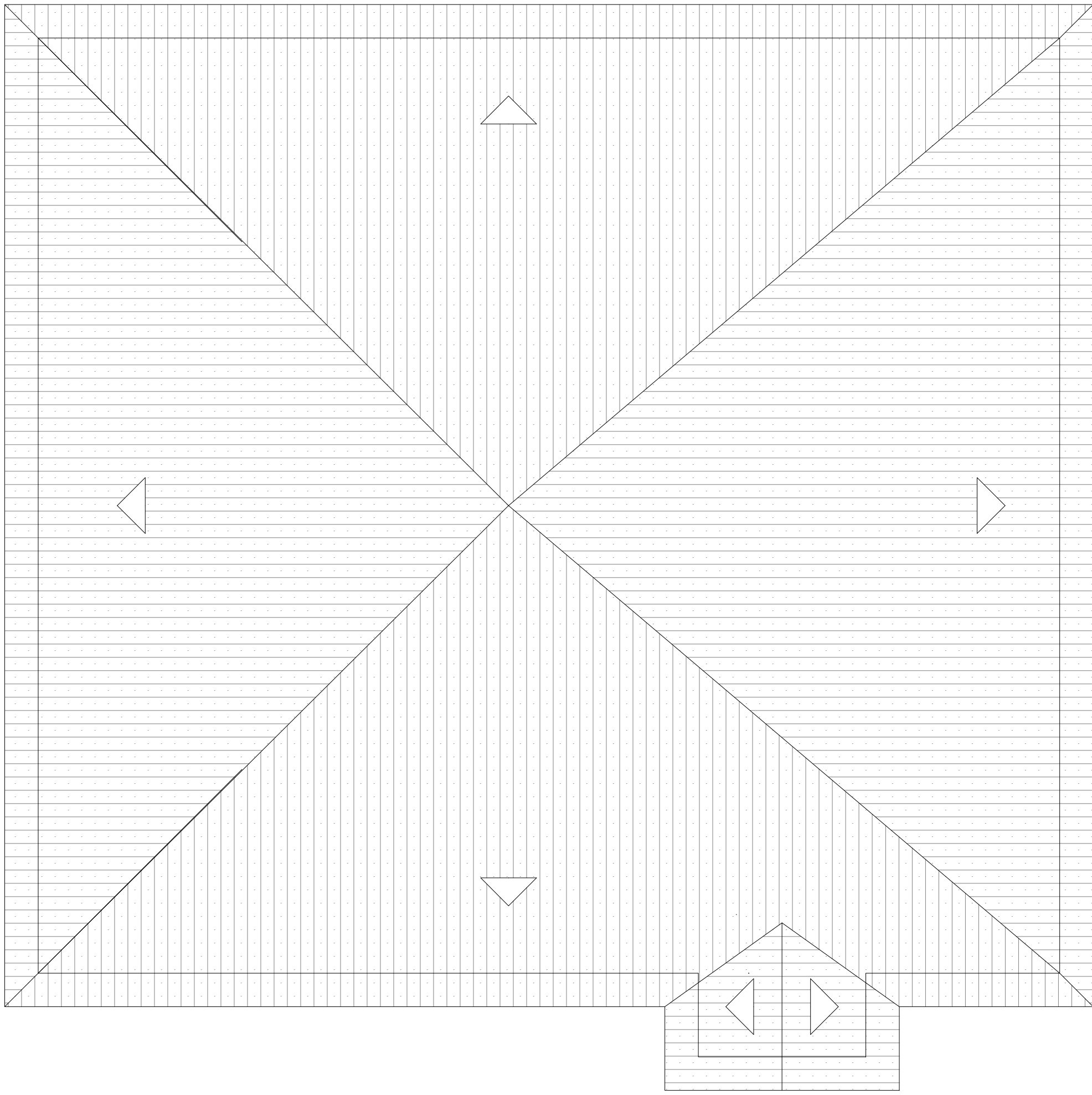
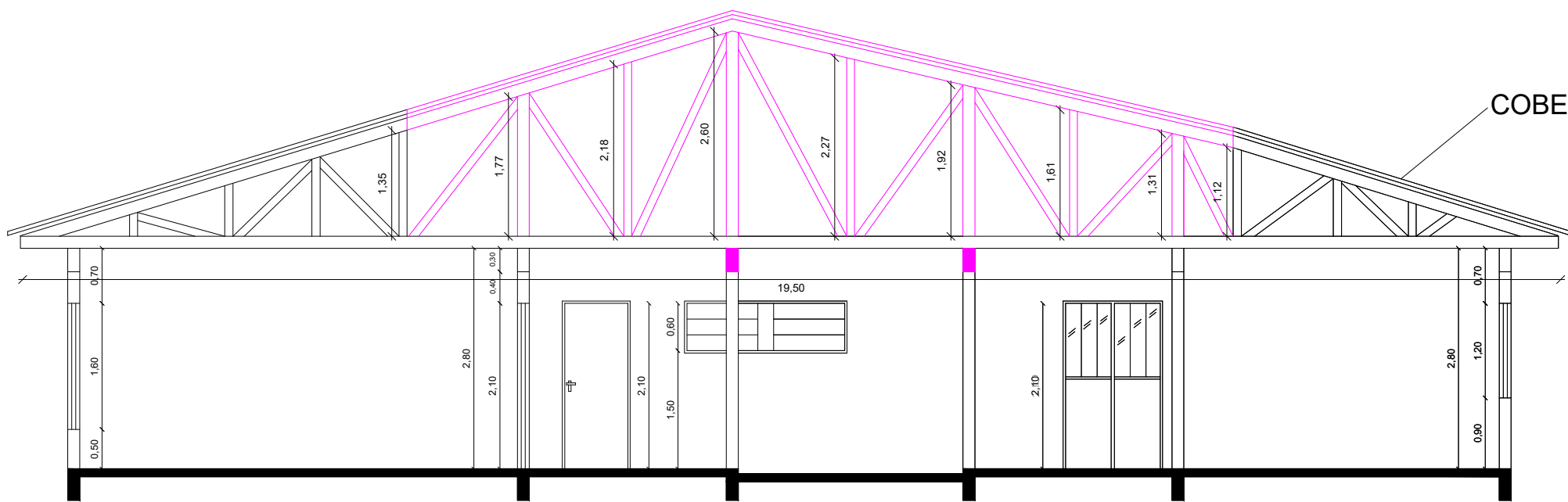


PLANTA BAIXA  
ESC.: 1/75



PLANTA DE COBERTURA  
ESC.: 1/75

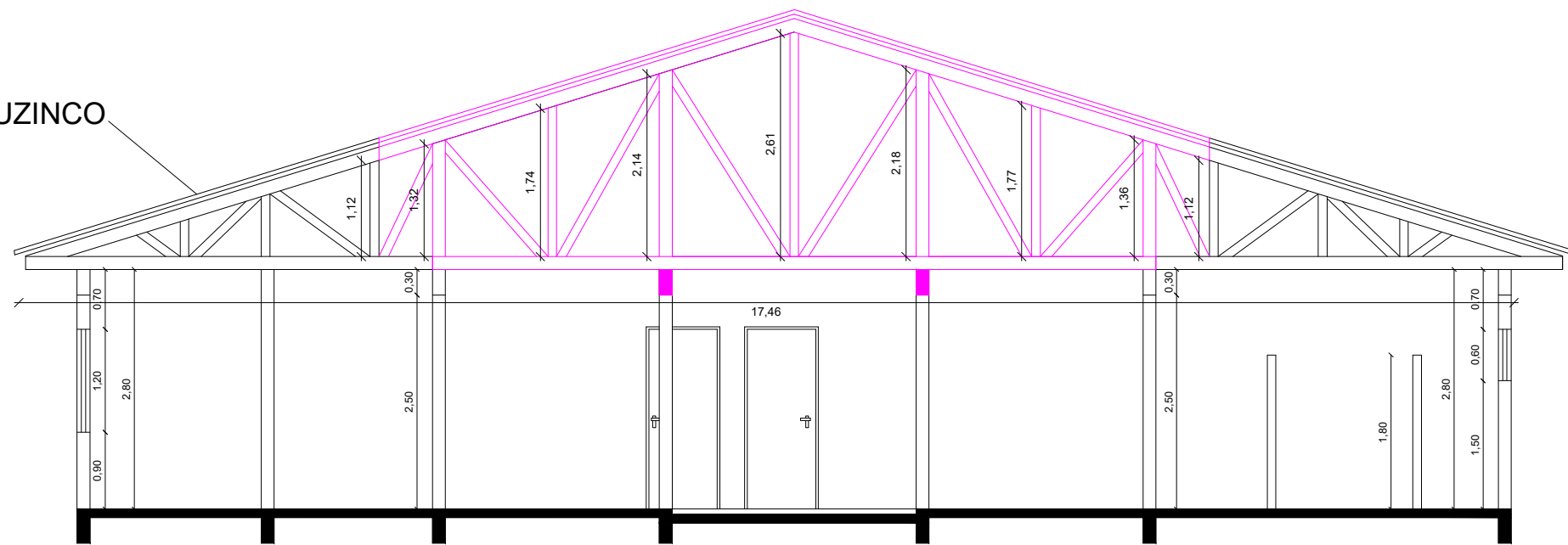
COBERTURA EM TELHA DE ALUZINCO  
e = 0,5 mm - 350,00 m²



CORTE 'A'  
ESC.:1/75

COBERTURA EM TELHA DE ALUZINCO  
e = 0,5 mm

MADEIRAMENTO  
NOVO



CORTE 'B'  
ESC.:1/75