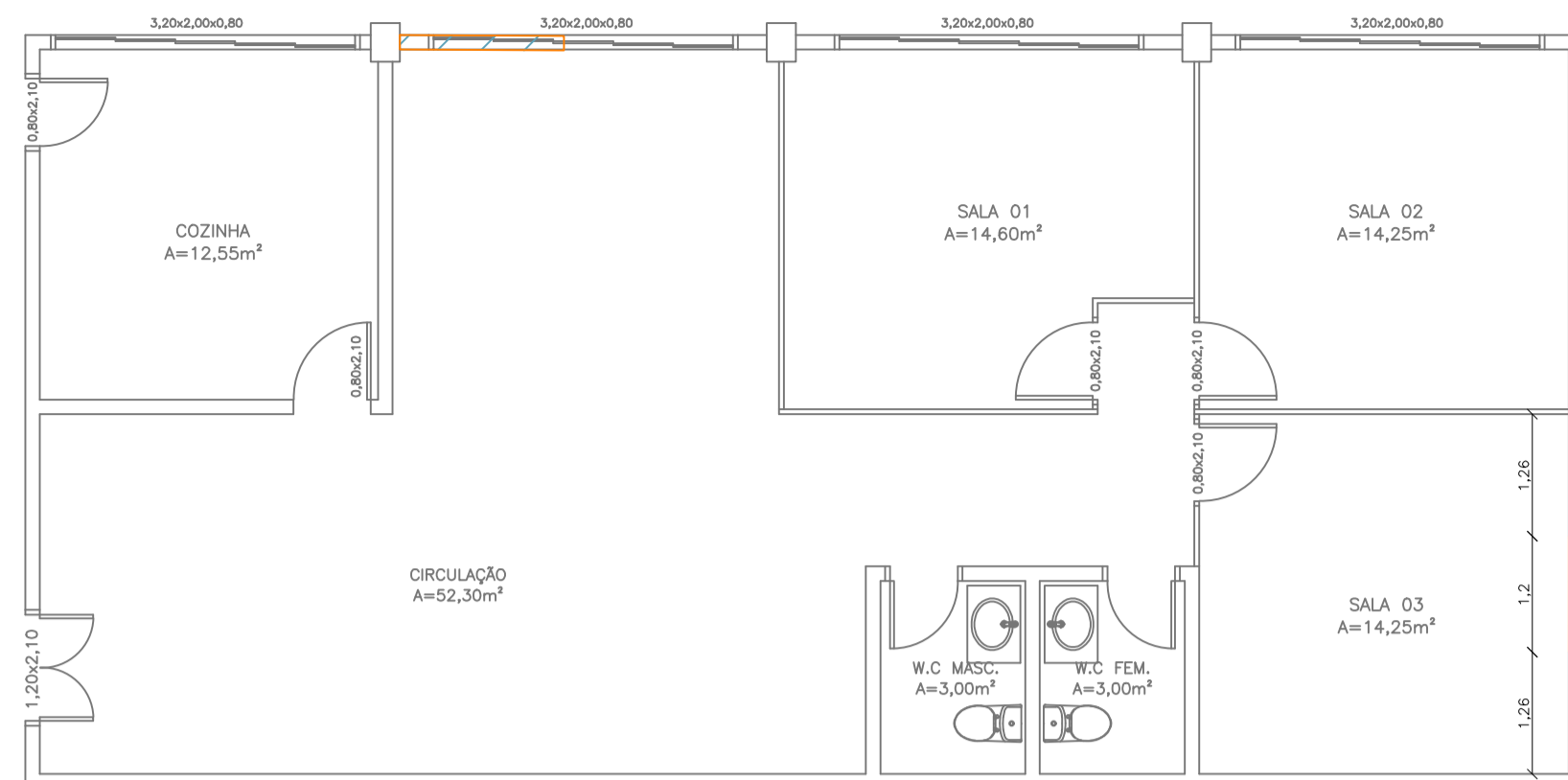
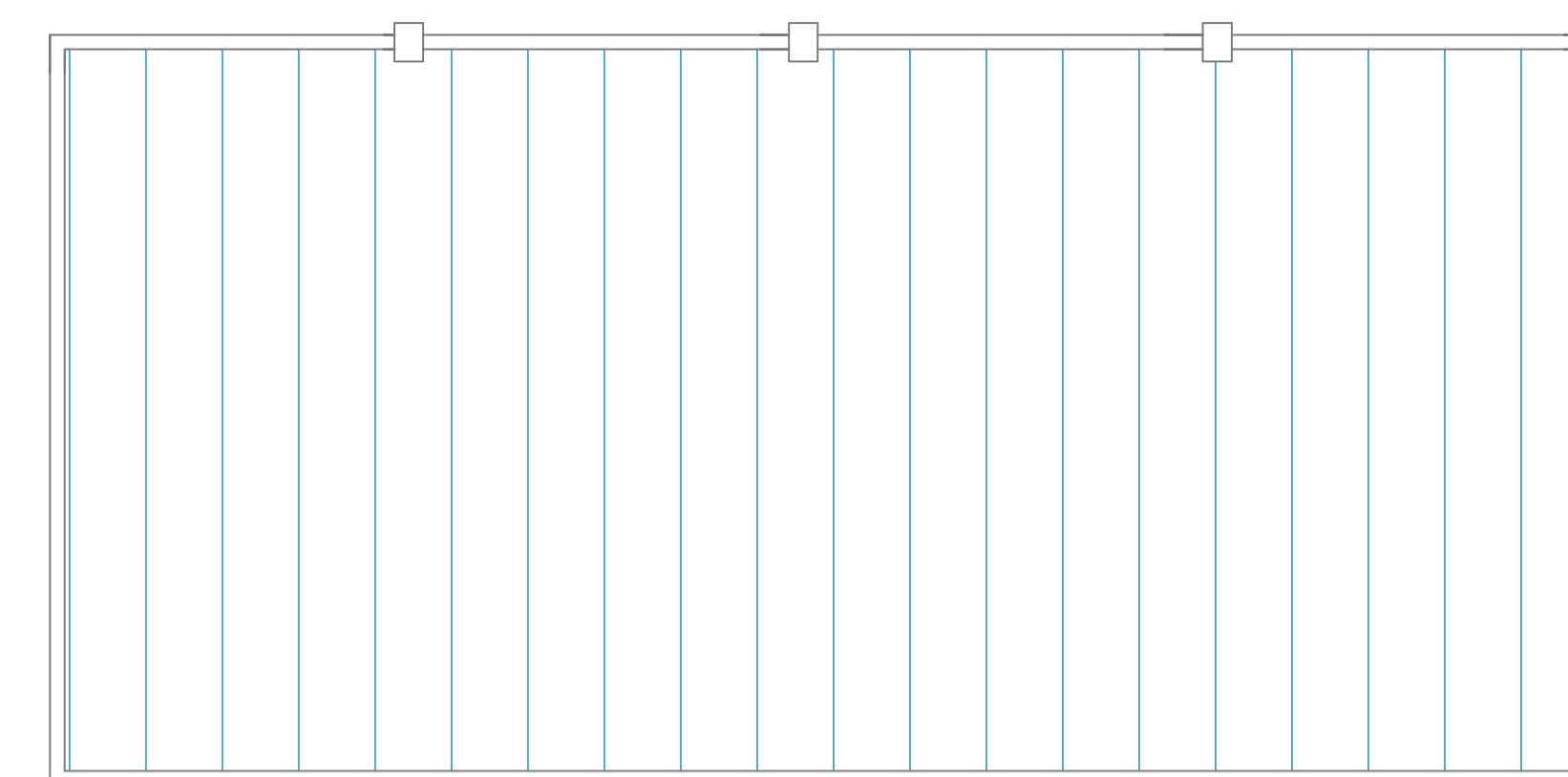


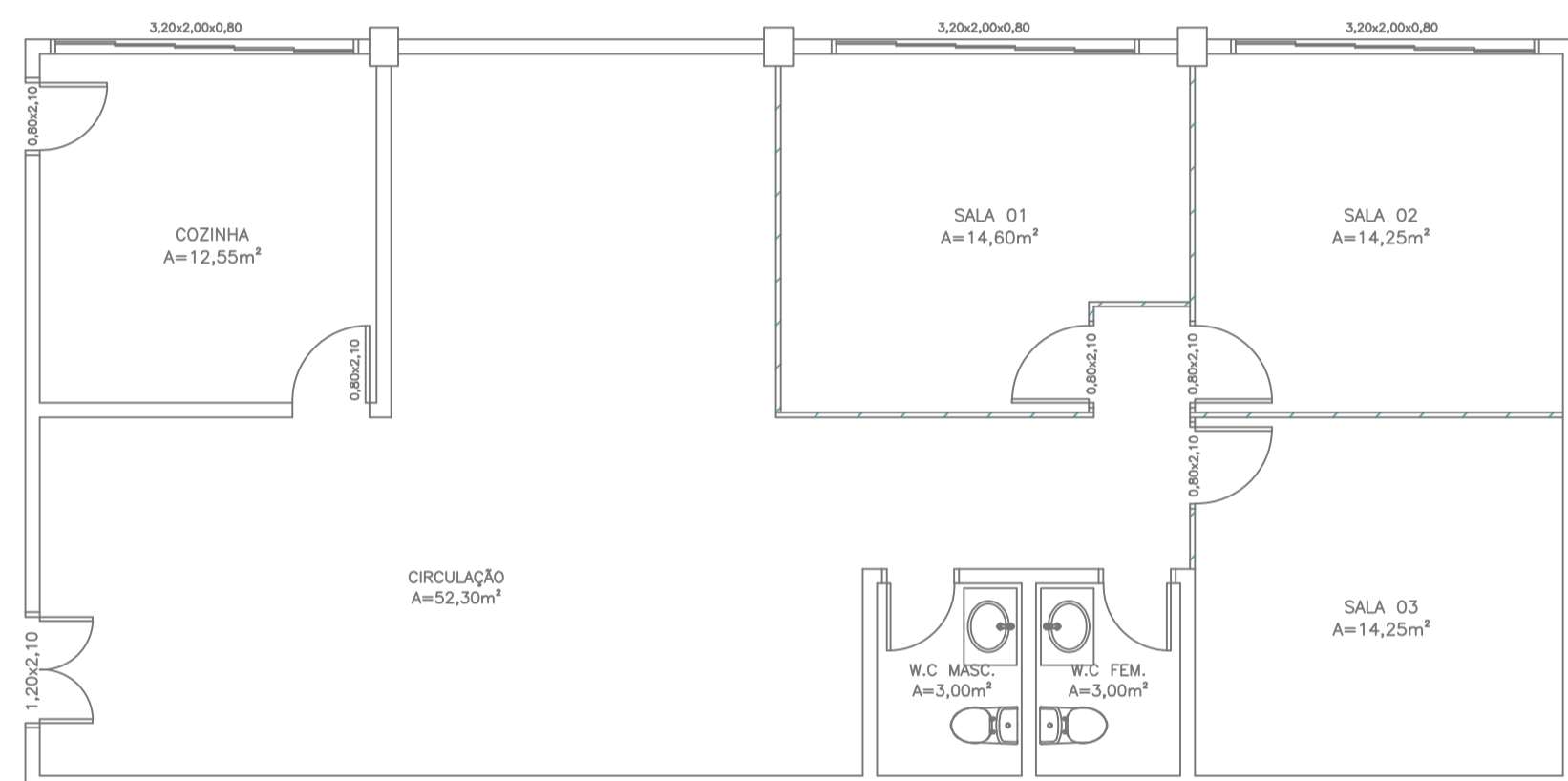
ÁREA DE INTERVENÇÃO – PISOS  
 ÁREA: 118,69 M2  
 ESCALA: 1/75



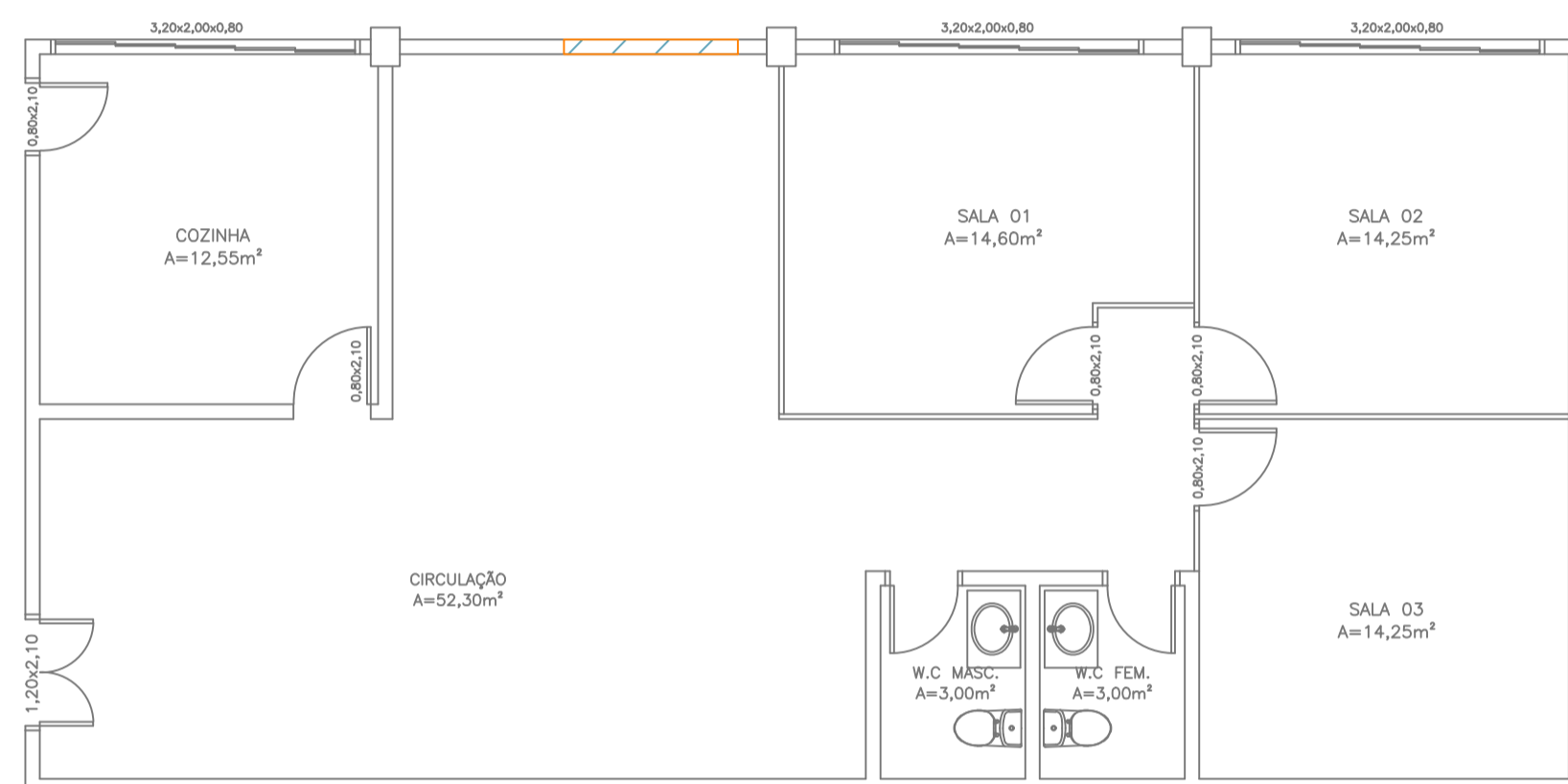
ÁREA DE INTERVENÇÃO – PAREDE A DEMOLIR  
 ÁREA: 3,40 M2  
 ESCALA: 1/75



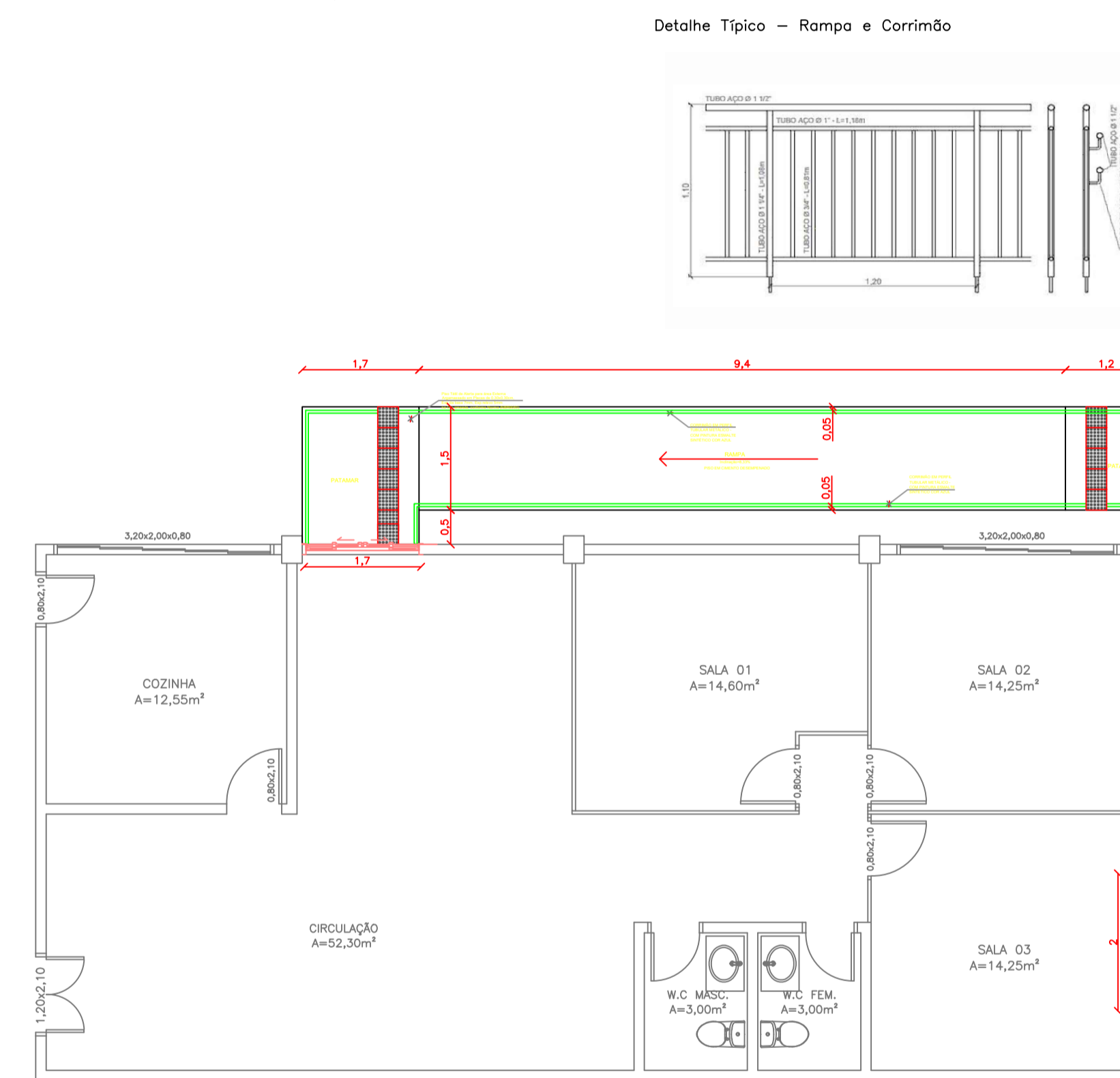
ÁREA DE INTERVENÇÃO – REPAROS NO TELHADO  
 ÁREA: 118,69 M2  
 ESCALA: 1/75



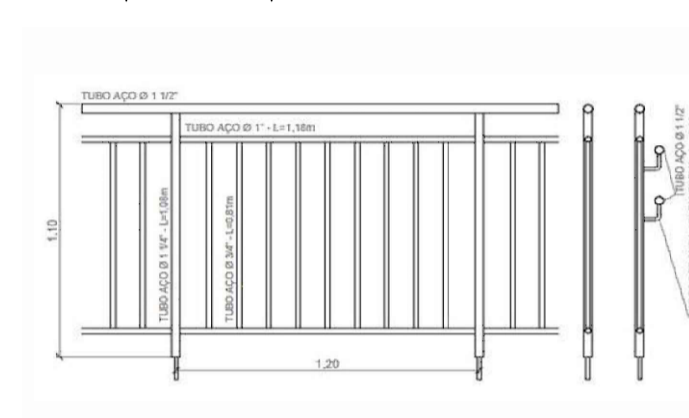
ÁREA DE INTERVENÇÃO – RETIRADA E RECOLOCAÇÃO DE DIVISÓRIA  
 ÁREA: 3,60 M2  
 ESCALA: 1/75



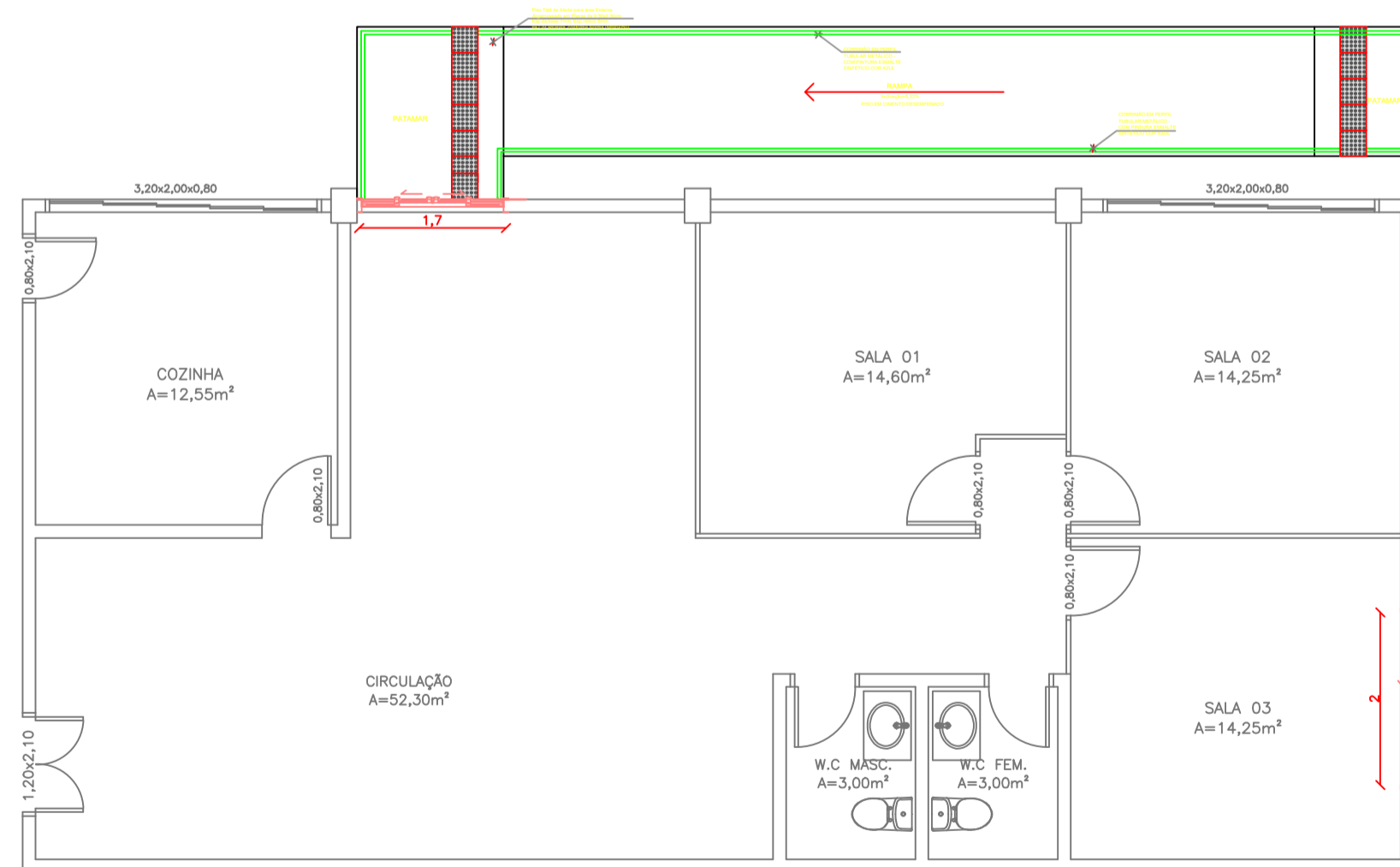
ÁREA DE INTERVENÇÃO – PAREDE A CONSTRUIR  
 ÁREA: 3,60 M2  
 ESCALA: 1/75



Detalhe Típico – Rampa e Corrimão



ÁREA DE INTERVENÇÃO – RAMPA E ESCADARIA DE ACESSO H=80CM  
 ÁREA: 21,93 M2  
 ESCALA: 1/75



ÁREA DE INTERVENÇÃO – ESQUADRIAS  
 ÁREA: 5,97 M2  
 ESCALA: 1/75

RUA VALZUMIRO DUTRA, 161-CENTRO-CEP 98.460-000  
 FONE (55) 3745-1288 - IRAÍ/RS

**MUNICÍPIO DE IRAÍ**

Plata das Águas e Pedras Preciosas

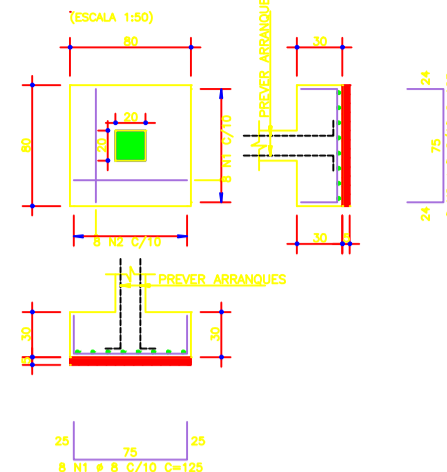
**PLANTA BAIXA**

REFORMA POSTO DE SAÚDE - PATRONATO	FRANCHA: 01	DATA: 04.2026
ESCALA: INDICADAS	ÁREA: 140,62 M²	

HENRIQUE DOTTO SULZBAH  
 ENGENHEIRO CIVIL - CREA: 99 251940

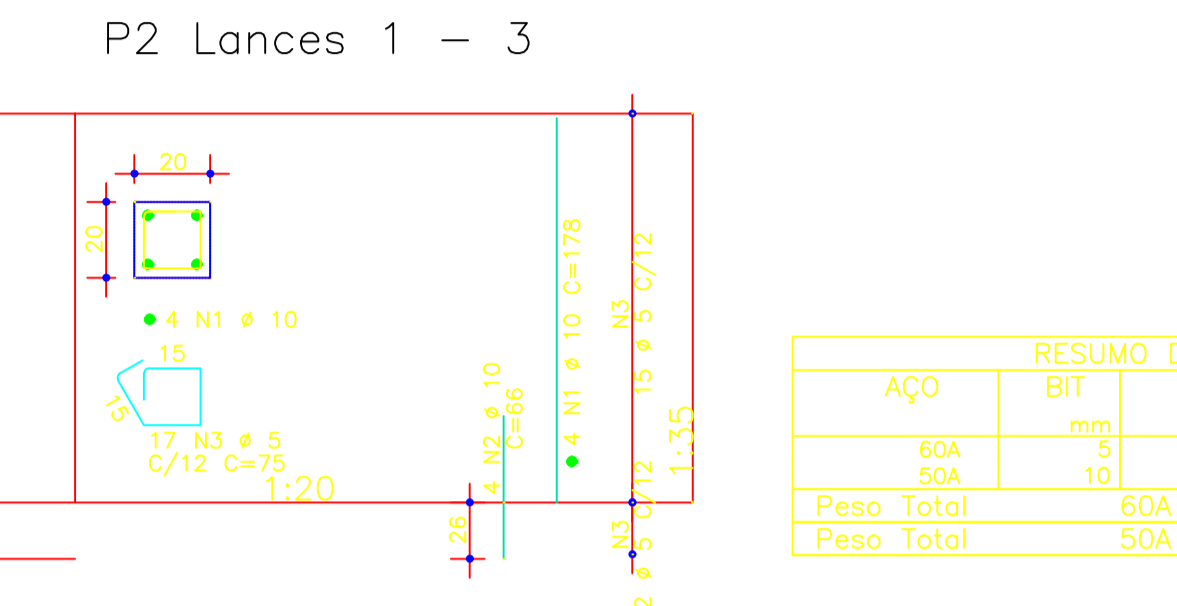
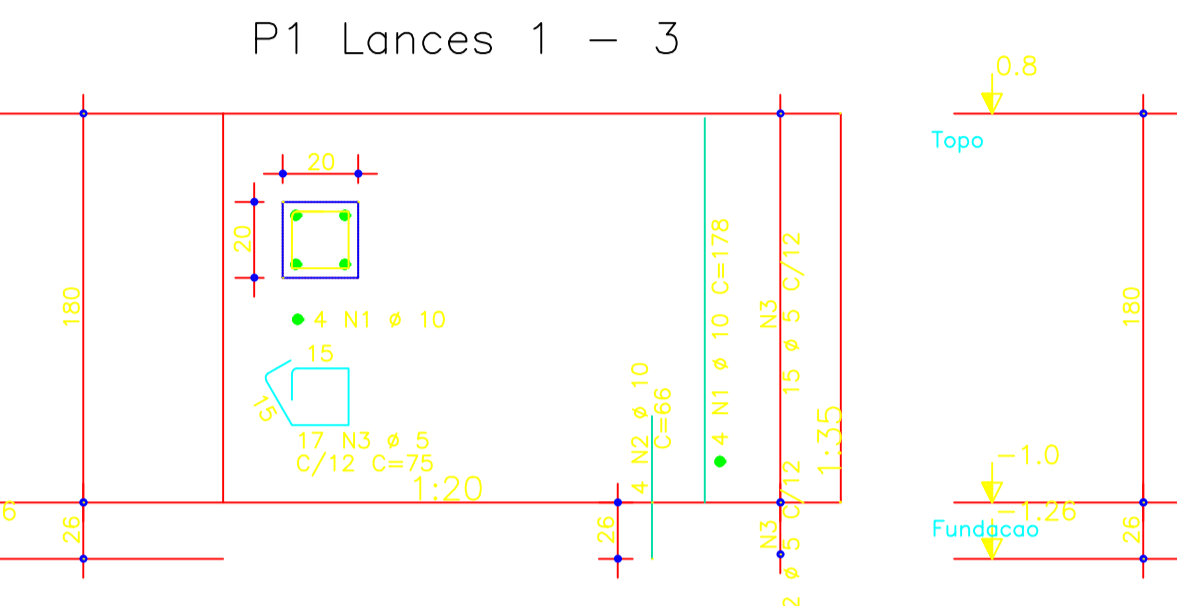
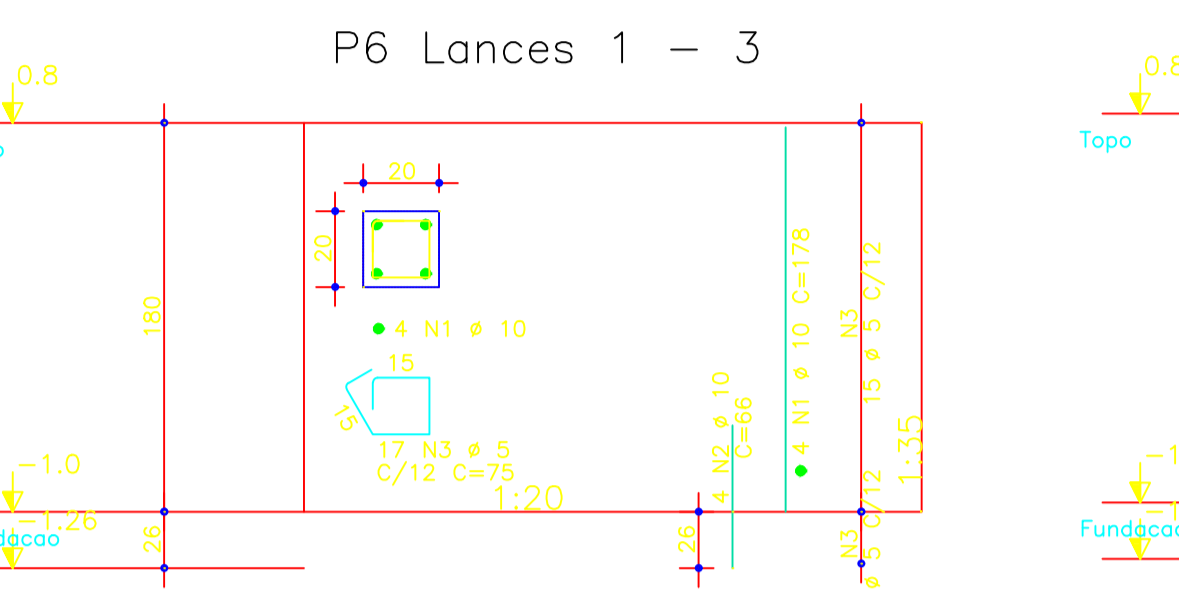
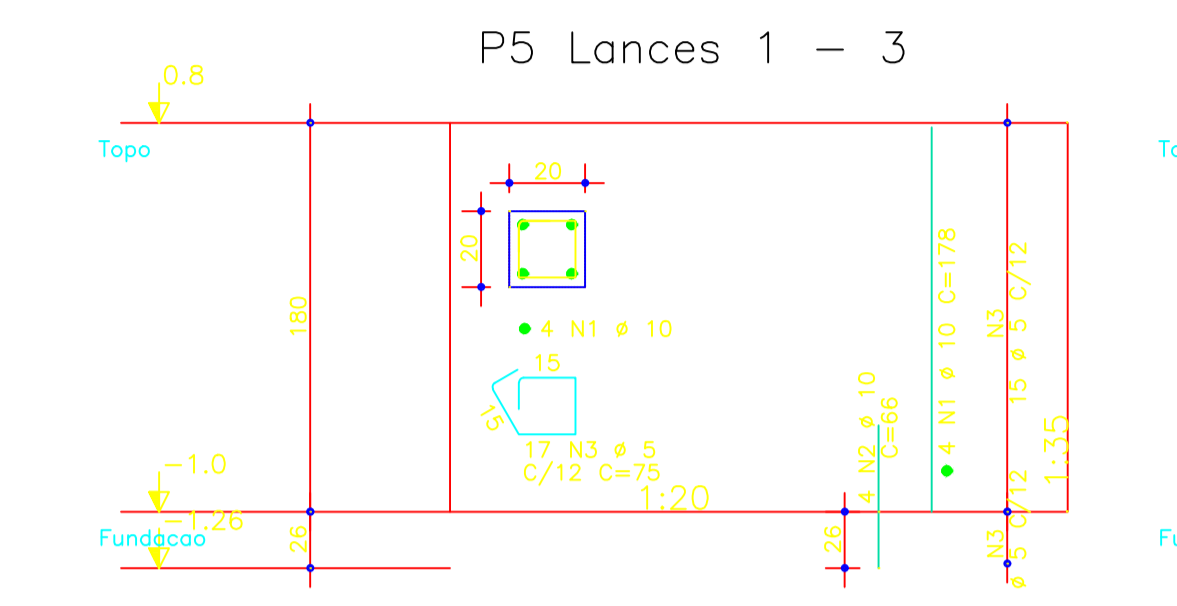
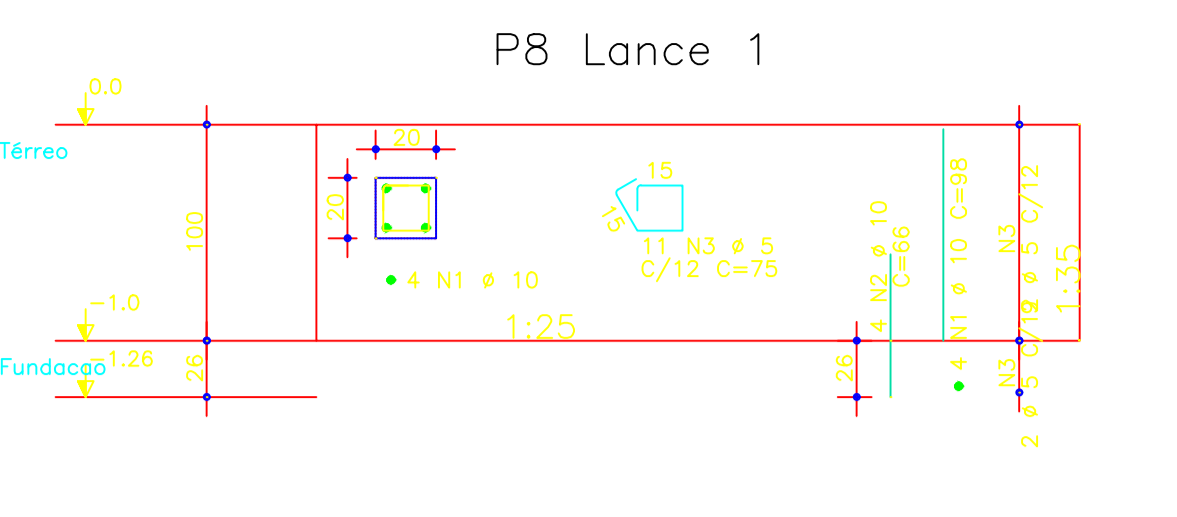
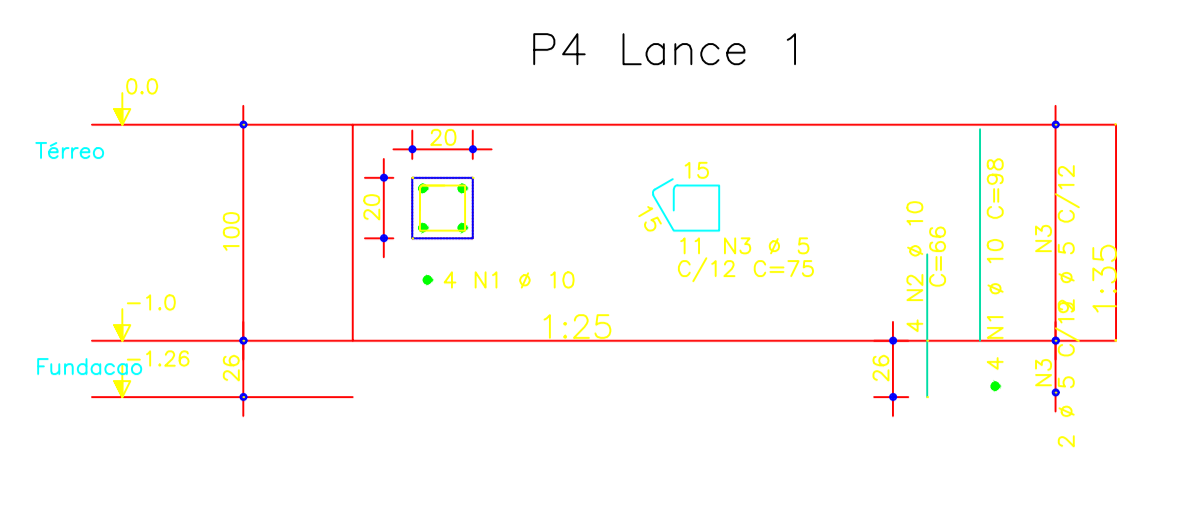
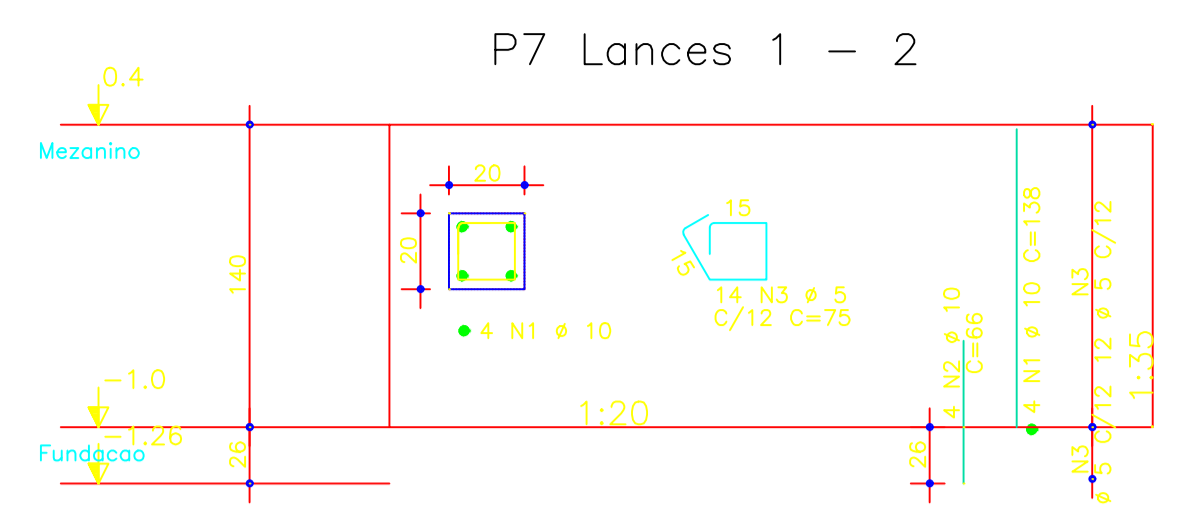
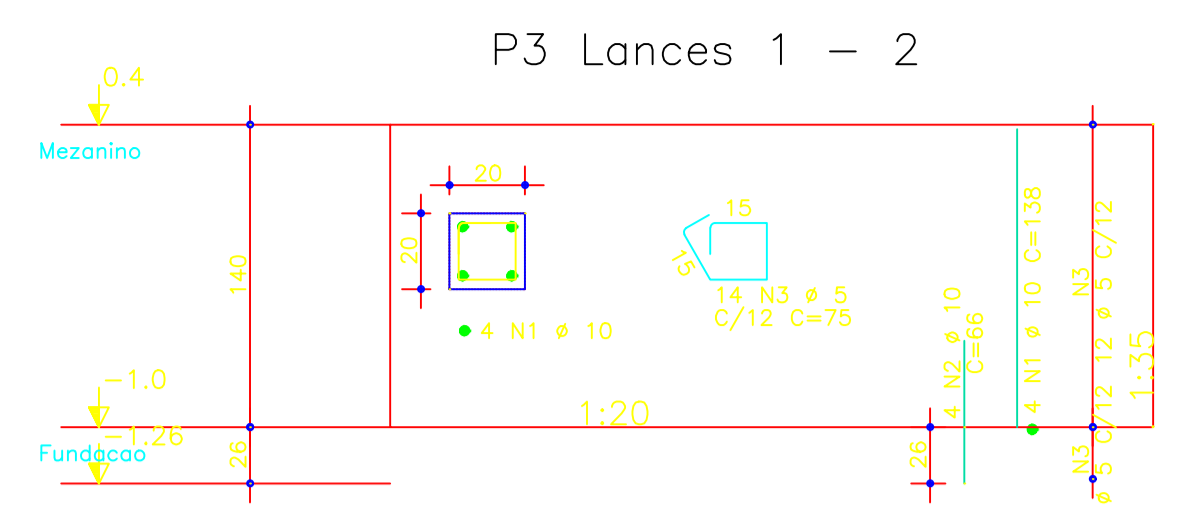
VOLMIR BIELSKI  
 PREFEITO MUNICIPAL

S1=S2=S3=S4=S5=S6=S7=S8

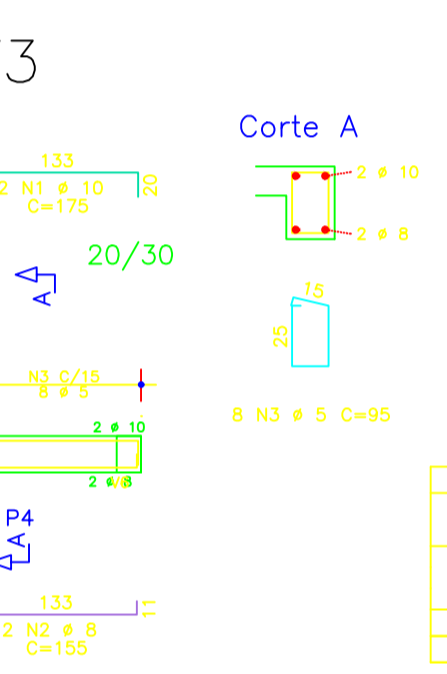
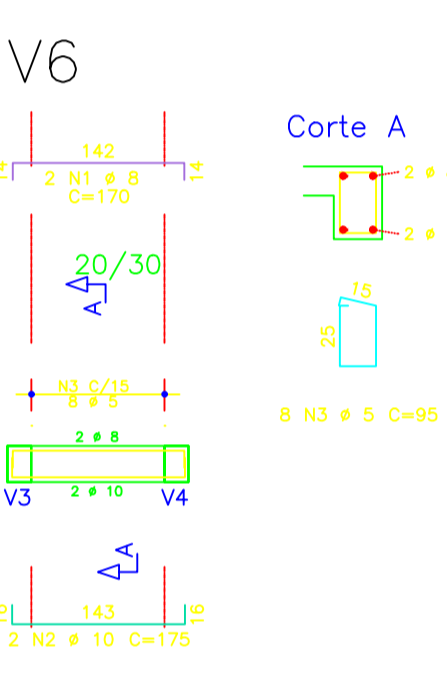
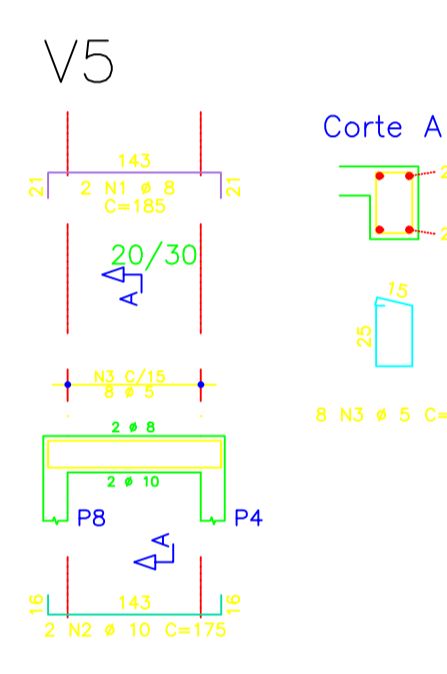
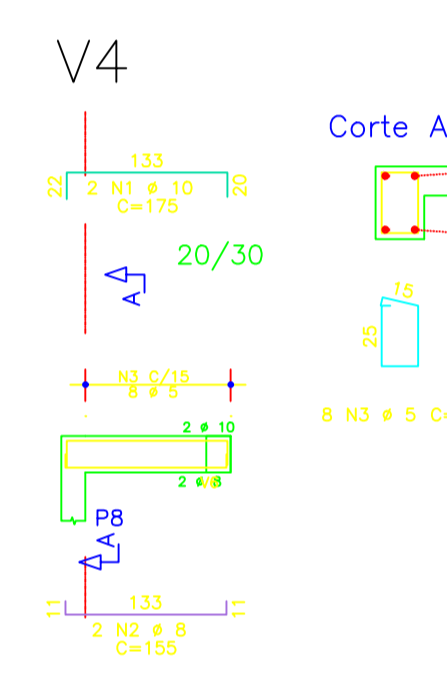


AÇO	POS	BT	QUANT	COMPRIMENTO	PESO
60A	1	1	1	100	14
50A	1	1	1	100	42
Peso Total				60A =	14 kgf
Peso Total				50A =	42 kgf

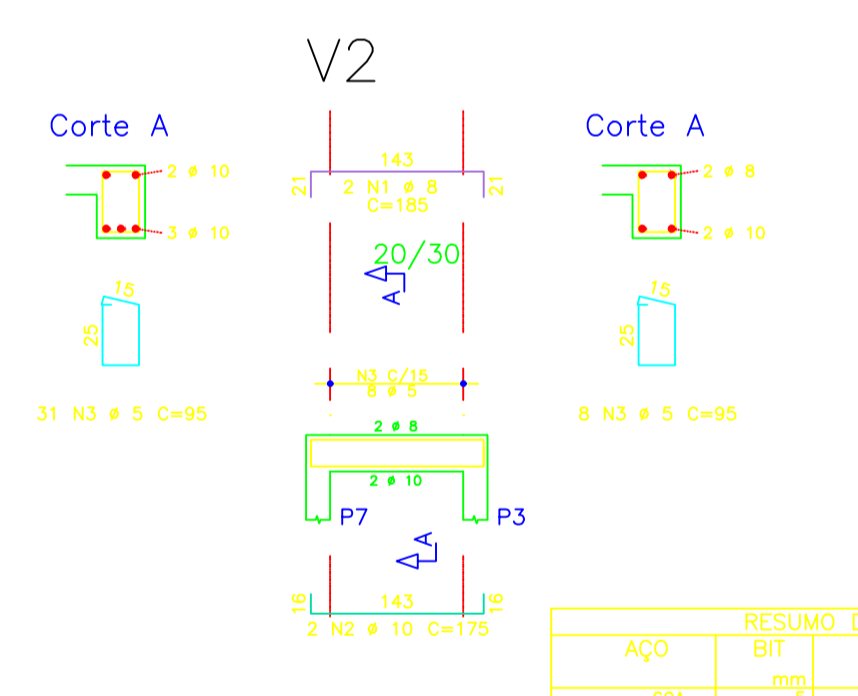
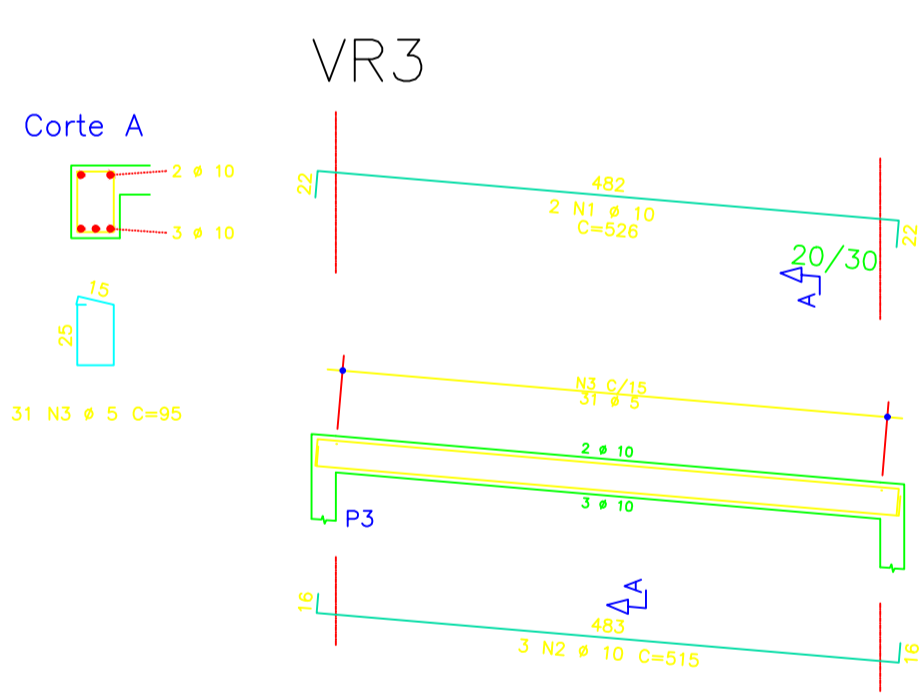
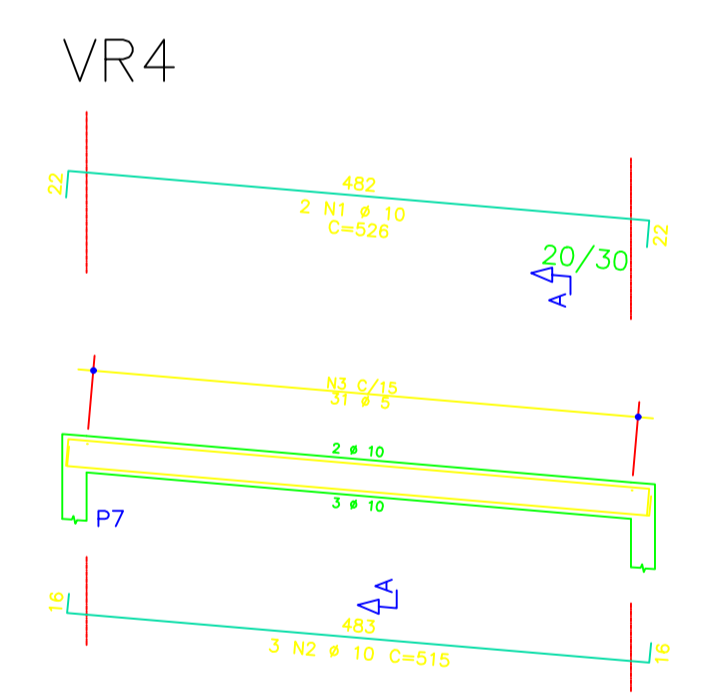
AÇO	RESUMO DE AÇO	PESO
60A	1	14
50A	1	42
Peso Total		60A = 14 kgf
Peso Total		50A = 42 kgf



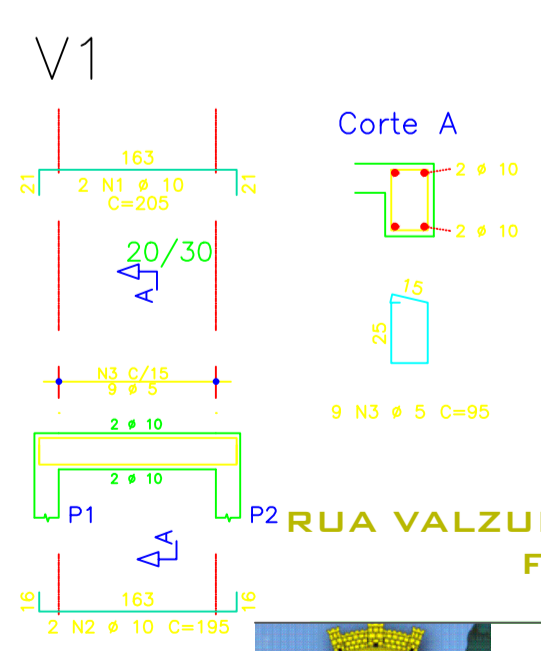
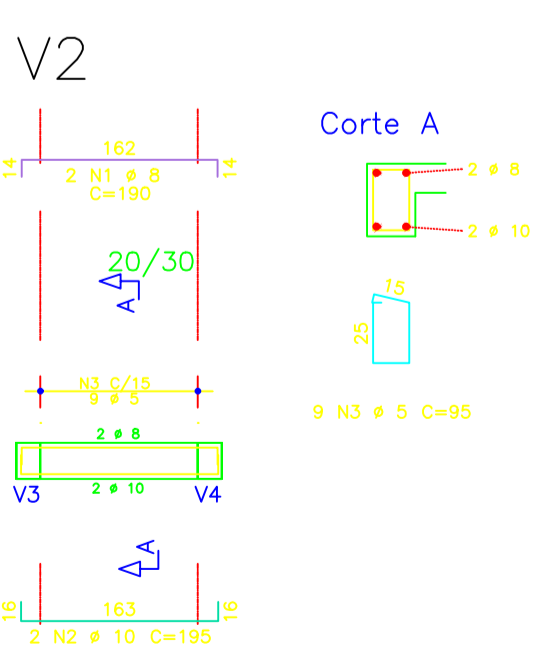
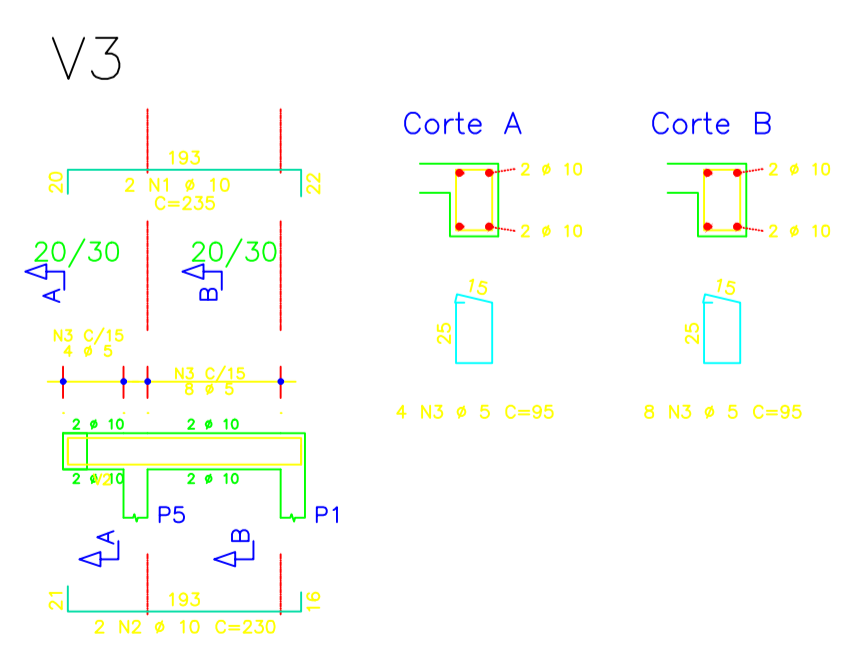
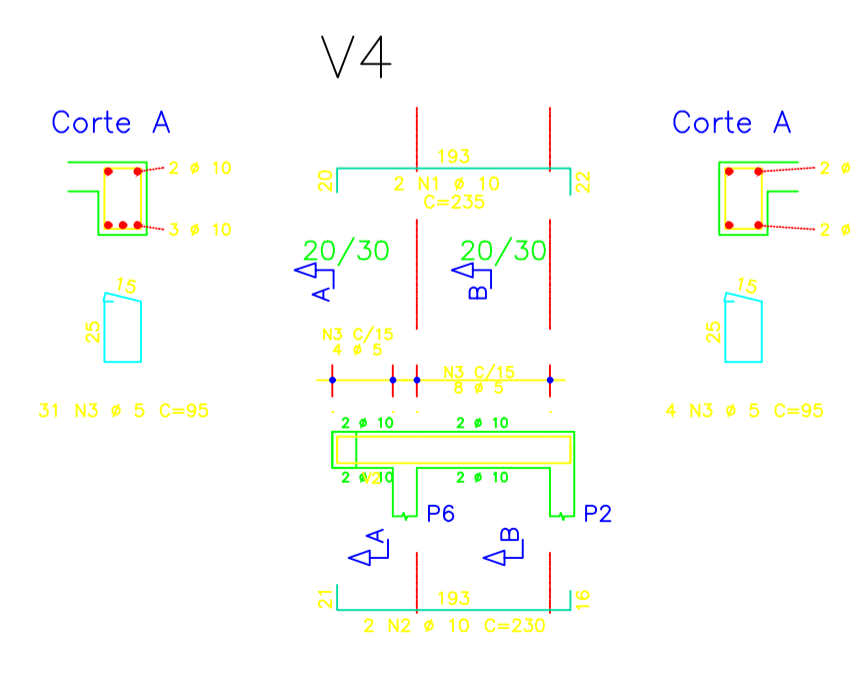
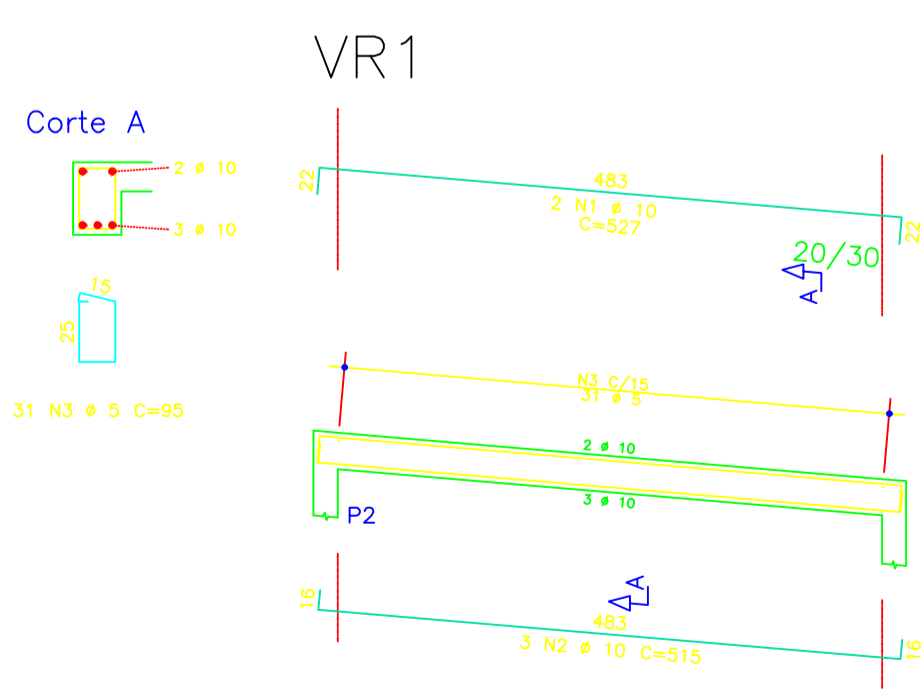
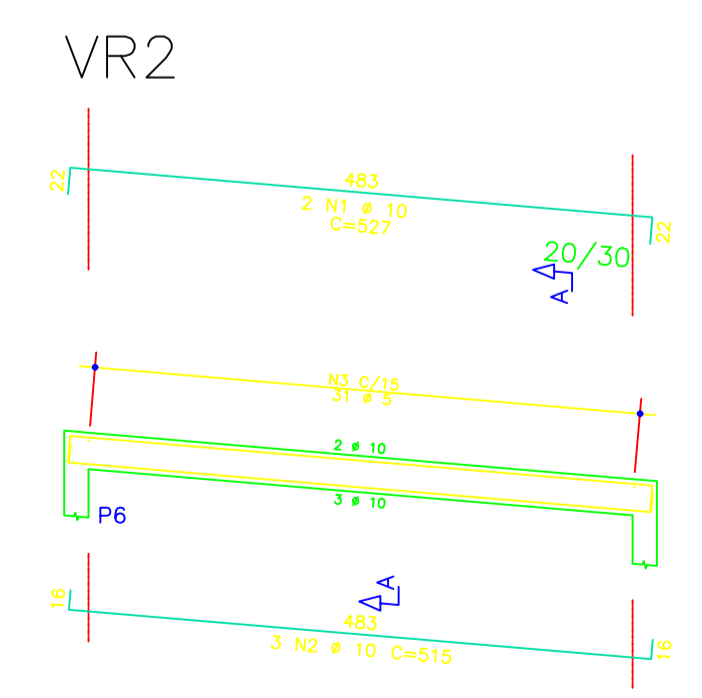
RESUMO DE AÇO			
AÇO	BIT	COMPR	PESO
60A	mm	m	kgf
50A	10	89	14
Peso Total		60A =	14 kgf
Peso Total		50A =	42 kgf



RESUMO DE AÇO			
AÇO	BIT	COMPR	PESO
60A	mm	m	kgf
50A	10	30	9
Peso Total		60A =	9 kgf
Peso Total		50A =	14 kgf



RESUMO DE AÇO			
AÇO	BIT	COMPR	PESO
60A	mm	m	kgf
50A	10	67	10
Peso Total		60A =	10 kgf
Peso Total		50A =	36 kgf



RESUMO DE AÇO			
AÇO	BIT	COMPR	PESO
60A	mm	m	kgf
50A	10	99	15
Peso Total		60A =	15 kgf
Peso Total		50A =	52 kgf

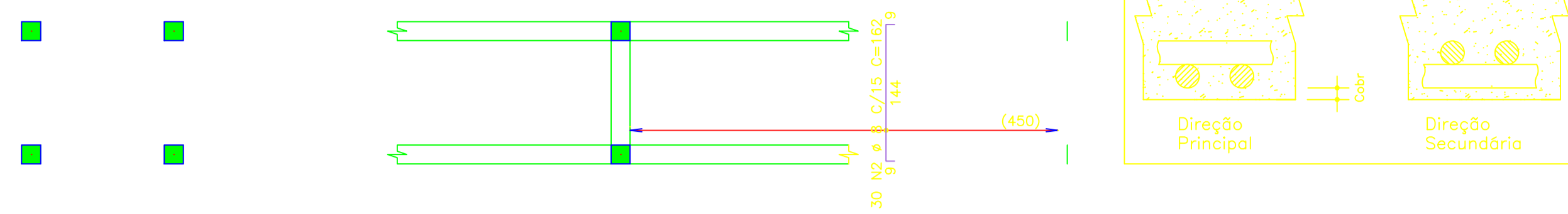


**MUNICIPIO DE IRAÍ**  
**PLANTA ESTRUTURAL**  
 REFORMA POSTO DE SAÚDE - PATRONATO  
 PRANCHA: 02 DATA: 04.2026  
 ESCALA: INDICADAS ÁREA: 140,62 m²  
 HENRIQUE DOTTO SULZBACH - ENGENHEIRO CIVIL - CREA Nº 283940  
 VOLMIR BIELSKI - PREZIDENTE MUNICIPAL

RUA VALZUMIRO DUTRA, 161-CENTRO-CEP 98.460-000  
 FONE (55) 3745-1288 - IRAÍ/RS

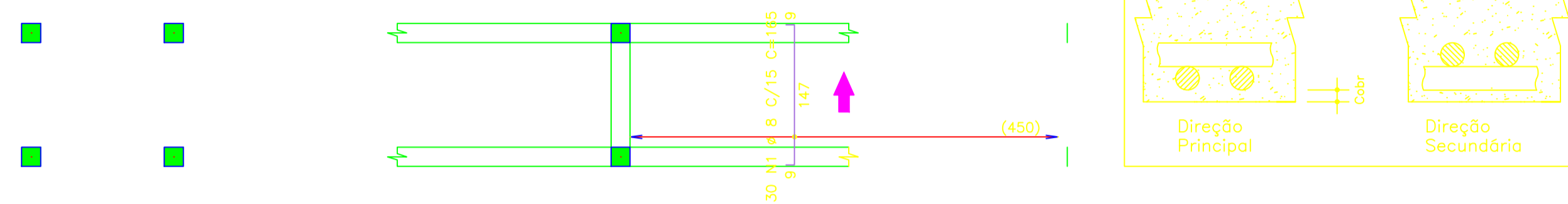
### Intermediário – Armadura negativa secundária

1X



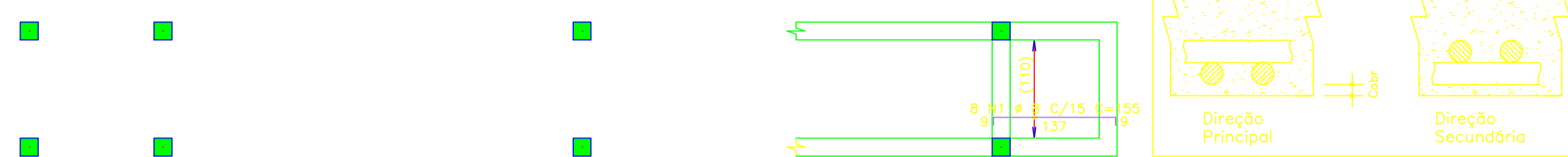
### Intermediário – Armadura positiva principal

1X



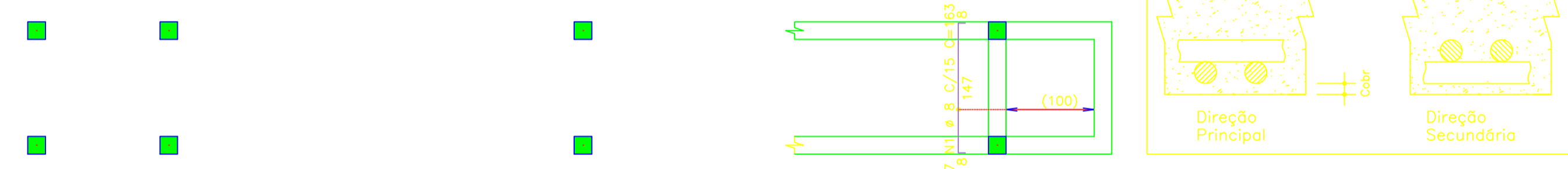
### Térreo – Armadura negativa principal

1X



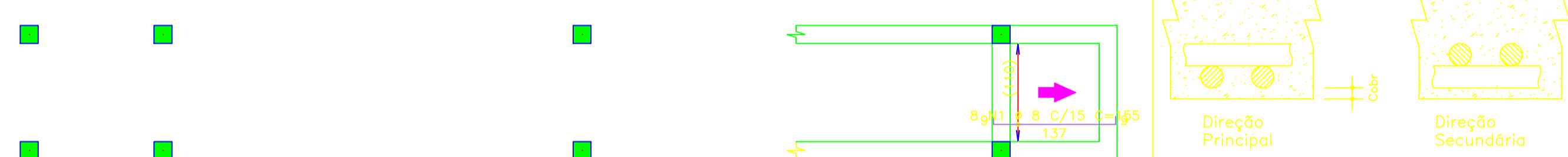
### Térreo – Armadura negativa secundária

1X



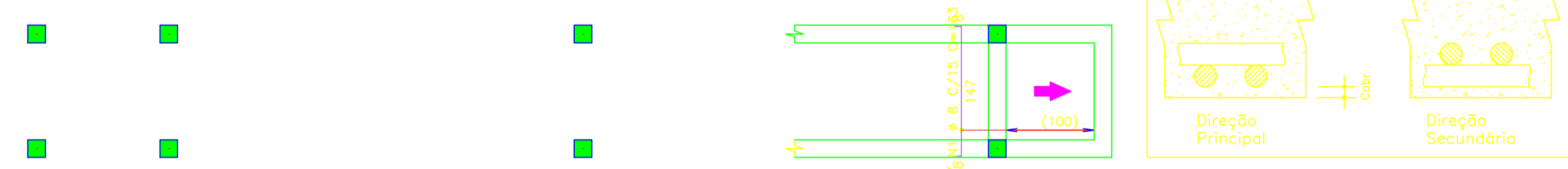
### Térreo – Armadura positiva principal

1X



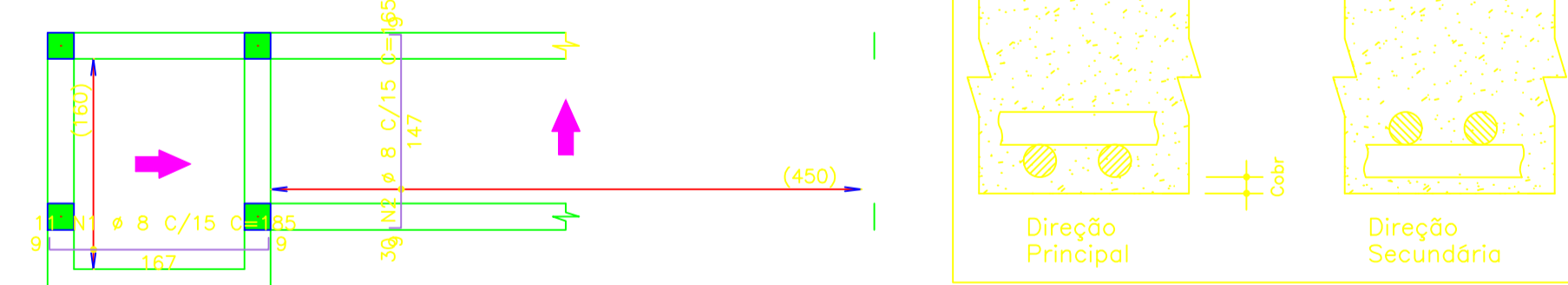
### Térreo – Armadura positiva secundária

1X



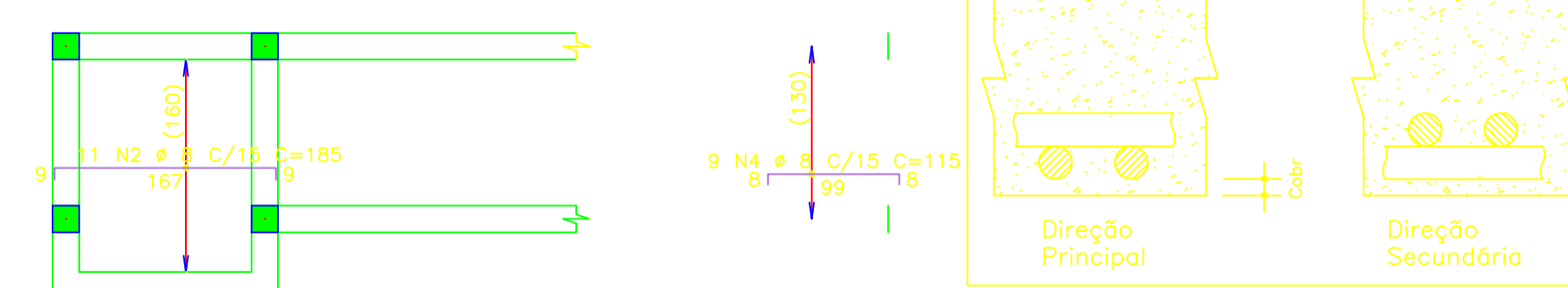
### Topo – Armadura positiva principal

1X



### Topo – Armadura negativa principal

1X



RESUMO DE AÇO			
AÇO	BIT	COMPR	PESO
	mm	m	kgf
50A	8	438	173
Peso Total SOA =			173 kgf

RUA VALZUMIRO DUTRA, 161-CENTRO-CEP 98.460-000  
FONE (55) 3745-1288 - IRAÍ/RS

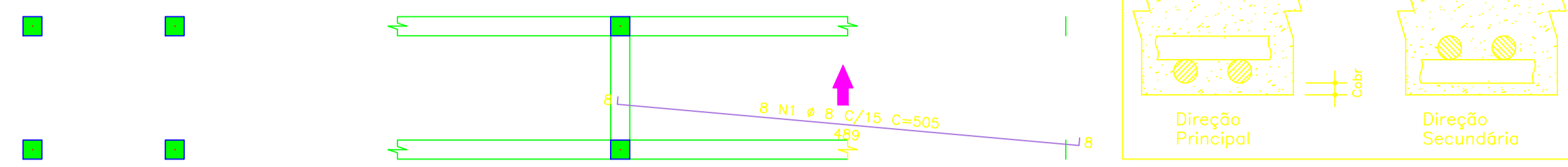
## MUNICIPIO DE IRAÍ

PLANTA ESTRUTURAL

REFORMA POSTO DE SAÚDE - PATRONATO	FRANCA:	03	DATA:	04.2026
	ESCALA:	INDICADAS	ÁREA:	140,62 M²
HENRIQUE DOTTO SULZBAH <small>ENGENHEIRO CIVIL - CREA 99 253940</small>		VOLMIR BIELSKI <small>PREZIDENTE MUNICIPAL</small>		

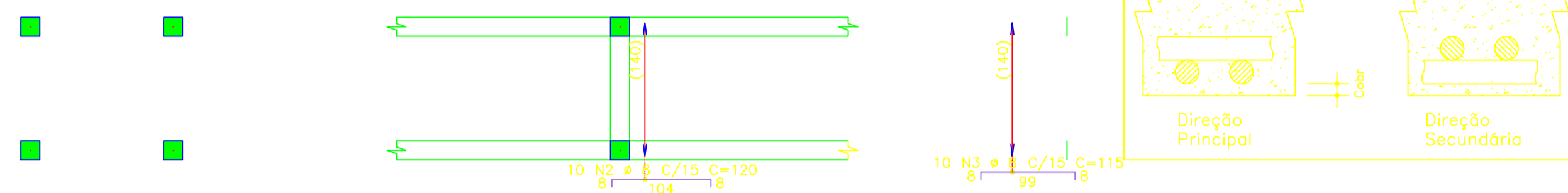
### Intermediário – Armadura positiva secundária

1X



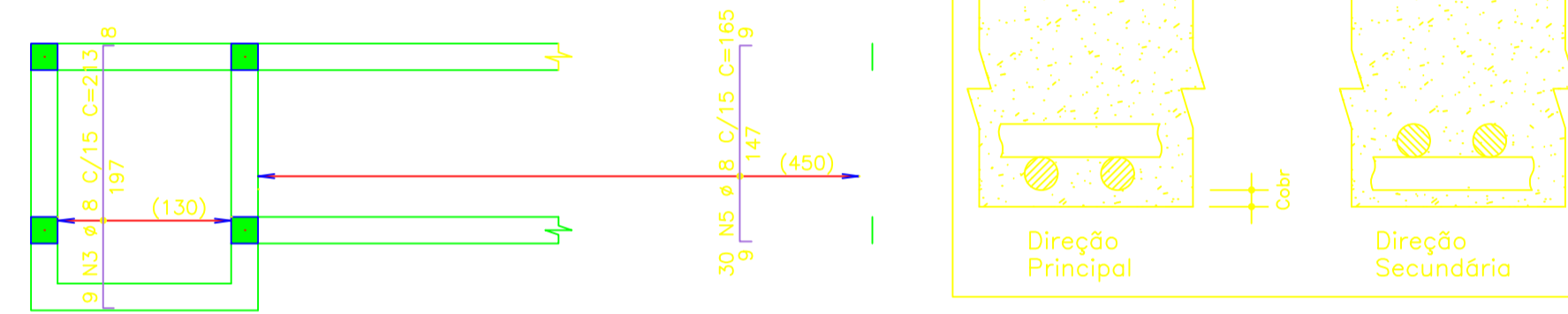
### Intermediário – Armadura negativa principal

1X



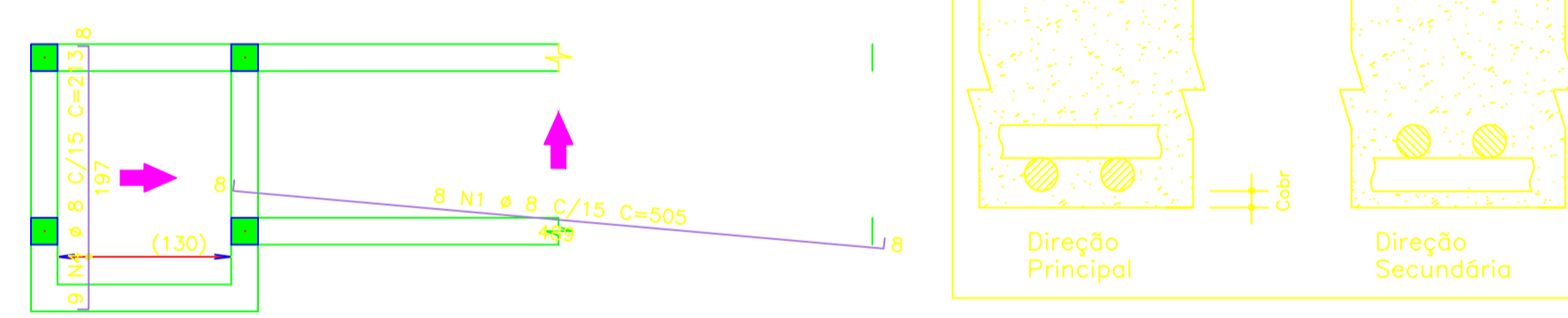
### Topo – Armadura negativa secundária

1X



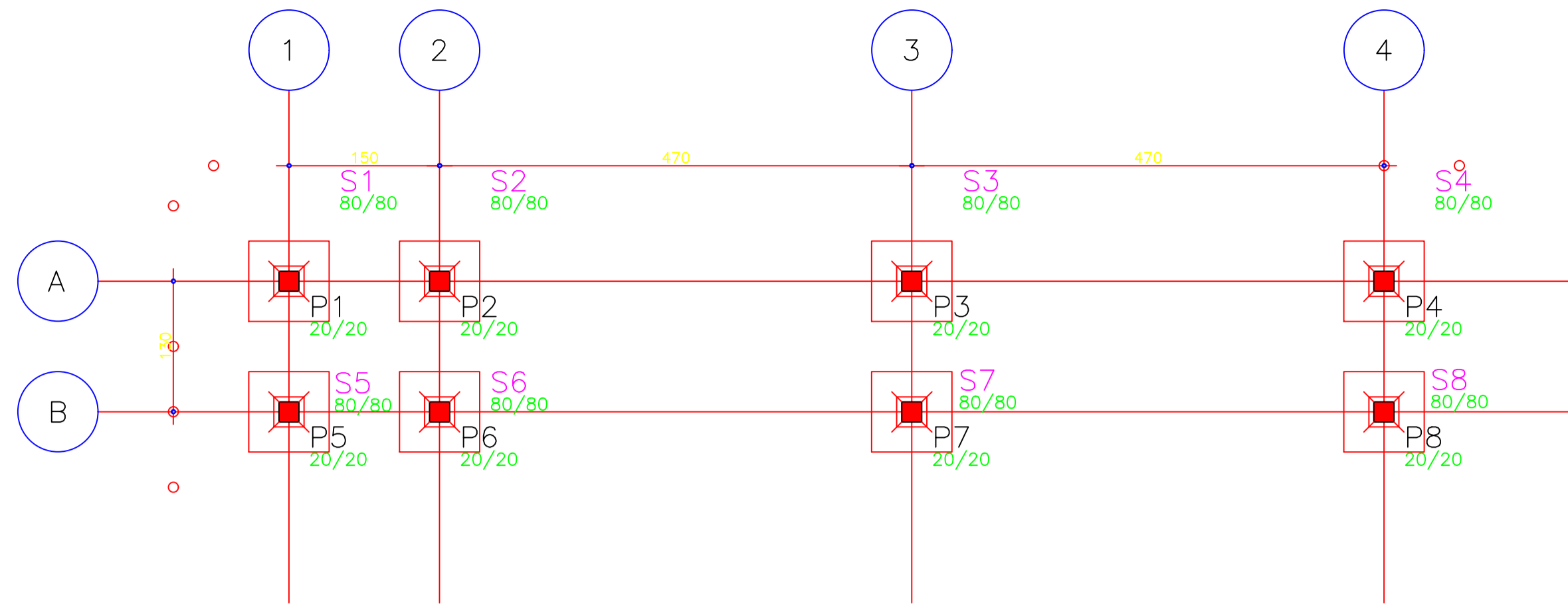
### Topo – Armadura positiva secundária

1X



RUA VALZUMIRO DUTRA, 161-CENTRO-CEP 98.460-000  
FONE (55) 3745-1288 - IRAÍ/RS

 <b>MUNICÍPIO DE IRAÍ</b> 		
<b>PLANTA ESTRUTURAL</b>		
REFORMA POSTO DE SAÚDE - PATRONATO	FRANCHAS: 04	DATA: 04.2026
	ESCALA: INDICADAS	ÁREA: 140,62 M²
HENRIQUE DOTTO SULZBAH <small>ENGENHEIRO CIVIL - CREA: 99 253940</small>		VOLMIR BIELSKI <small>PREZIDENTE MUNICIPAL</small>

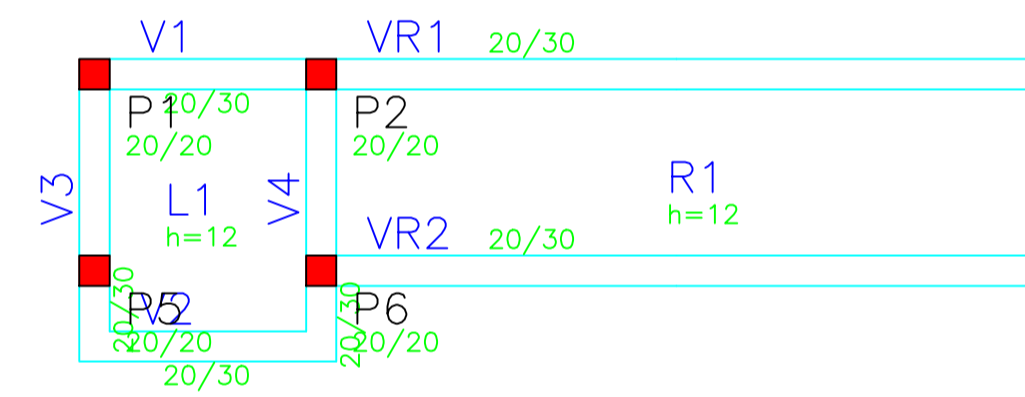


Planta Eixo

Escala 1:50

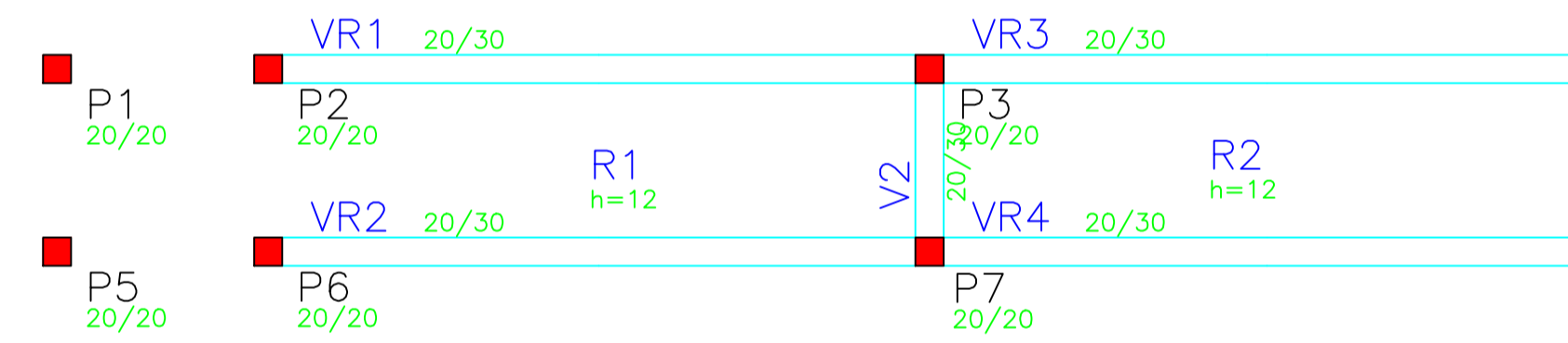
Planta Topo

Escala 1:50



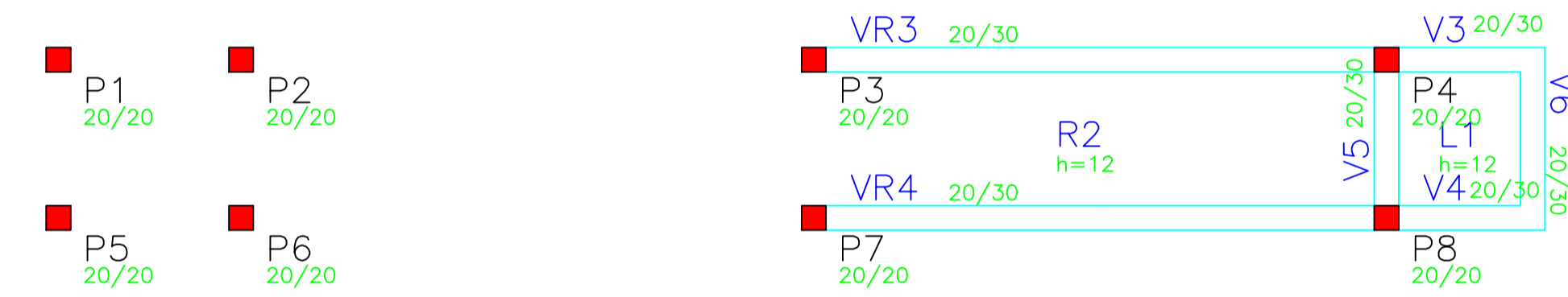
Planta Intermediário

Escala 1:50



Planta Térreo

Escala 1:50



Corte esquemático



RUA VALZUMIRO DUTRA, 161-CENTRO-CEP 98.460-000  
FONE (55) 3745-1288 - IRAÍ/RS

 <b>MUNICÍPIO DE IRAÍ</b>			
REFORMA POSTO DE SAÚDE - PATRONATO	FRANCA: 05	DATA: 04.2026	
	ESCALA: INDICADAS	ÁREA: 140,62 M²	
<b>HENRIQUE DOTTO SULZBAH</b> <small>ENGENHEIRO CIVIL - CREA: 99 253540</small>		<b>VOLMIR BIELSKI</b> <small>PREZIDENTE MUNICIPAL</small>	