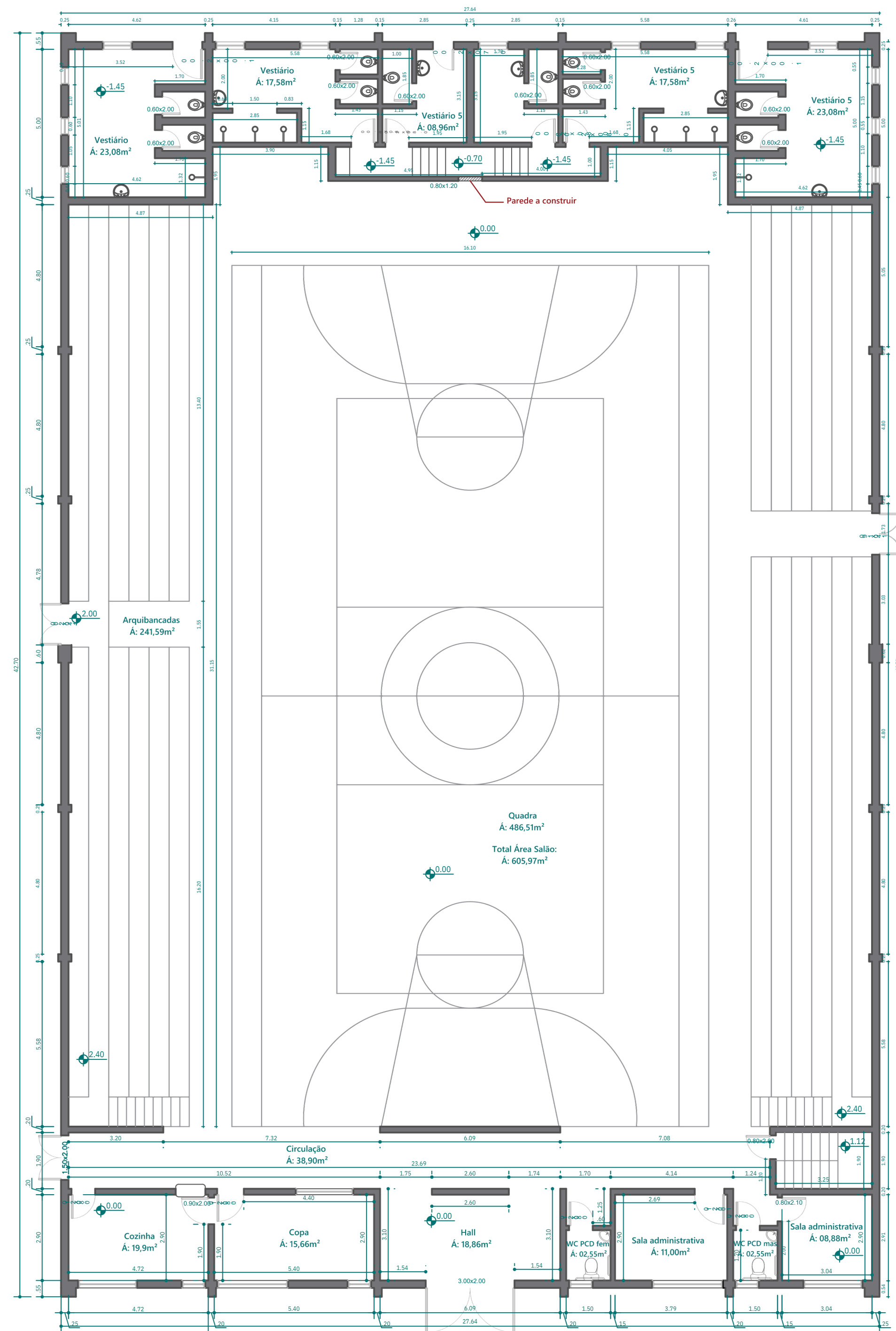
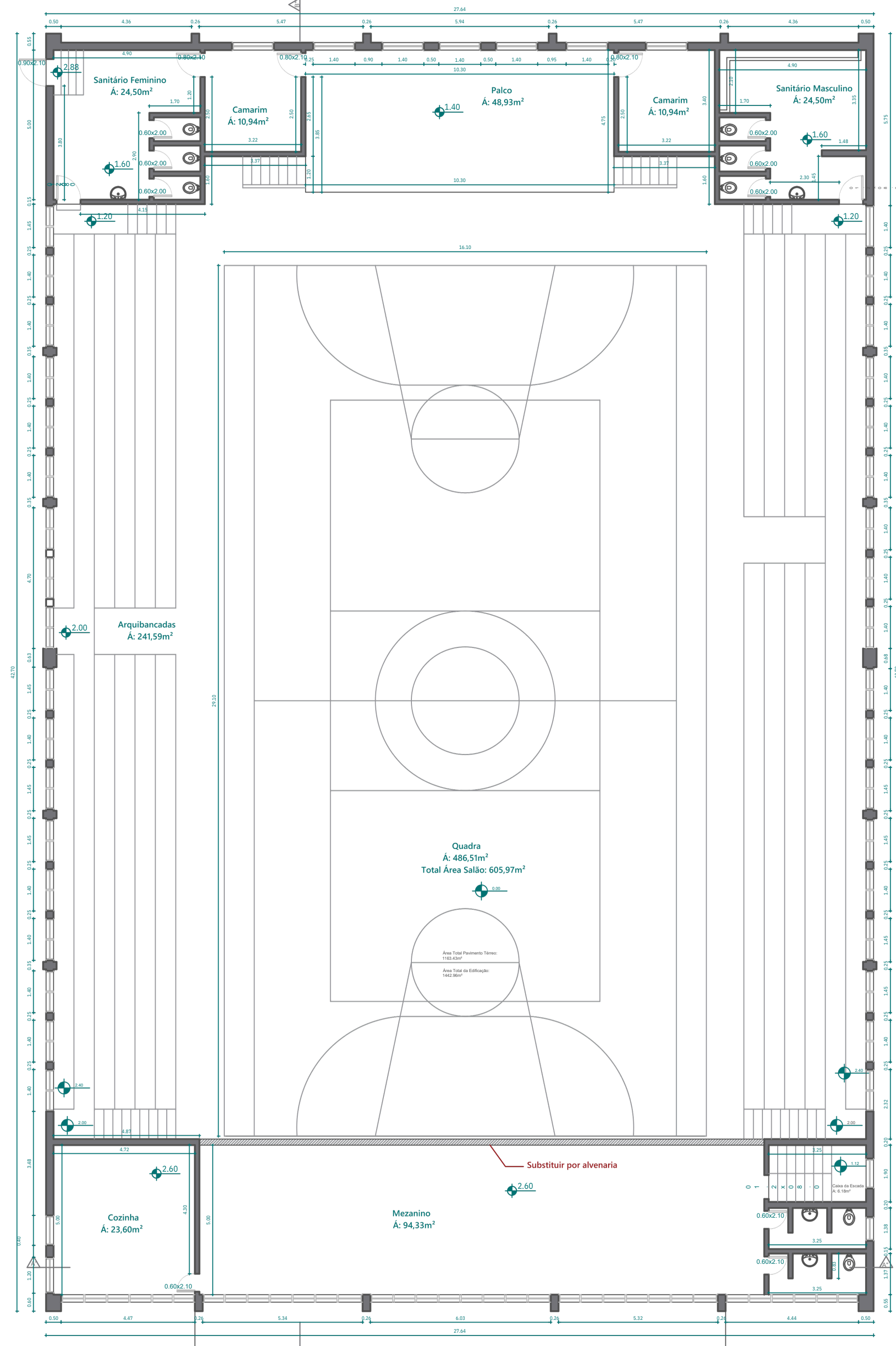


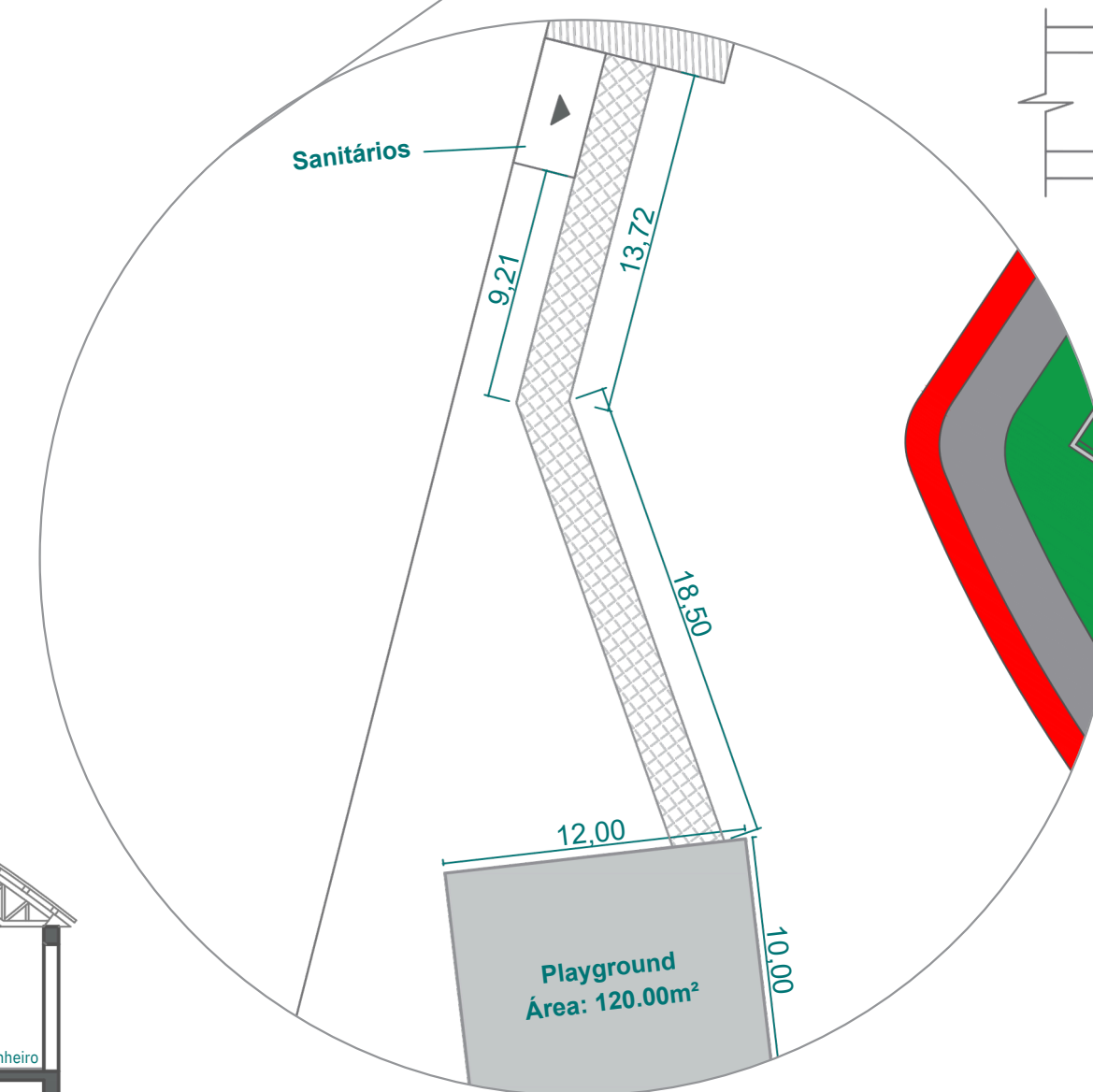
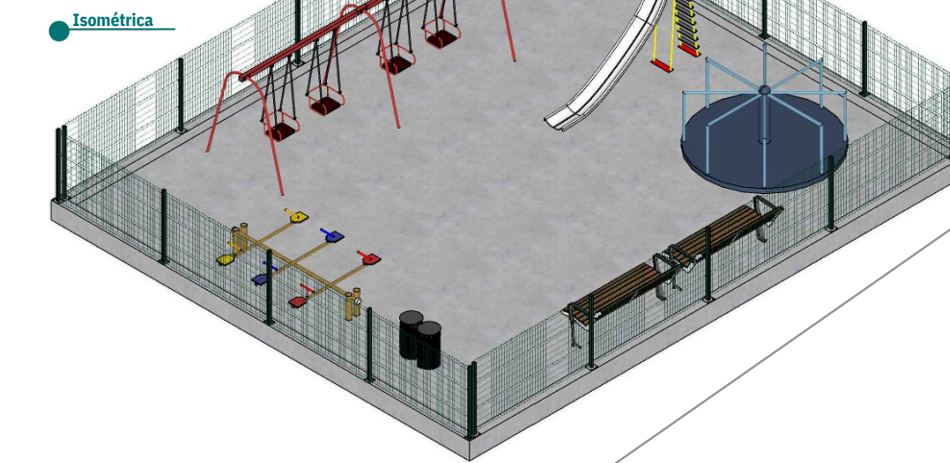
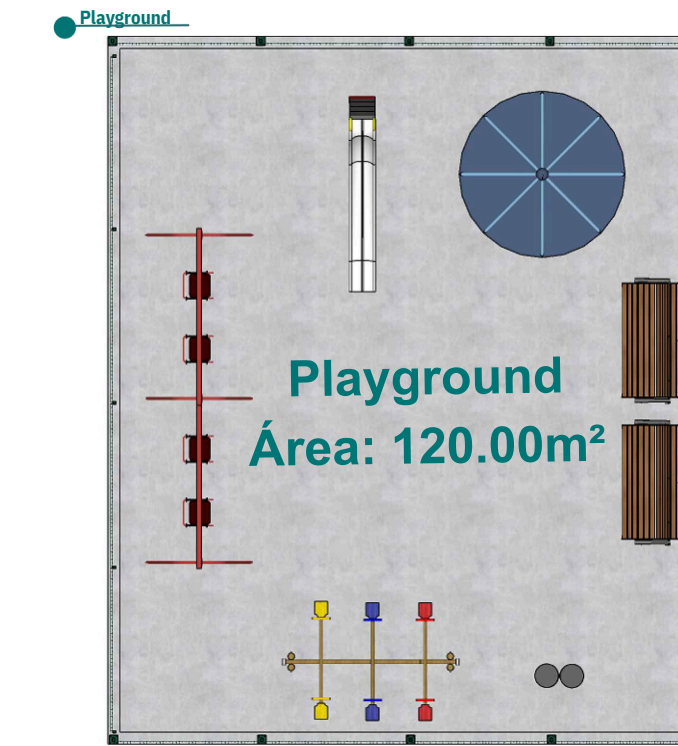
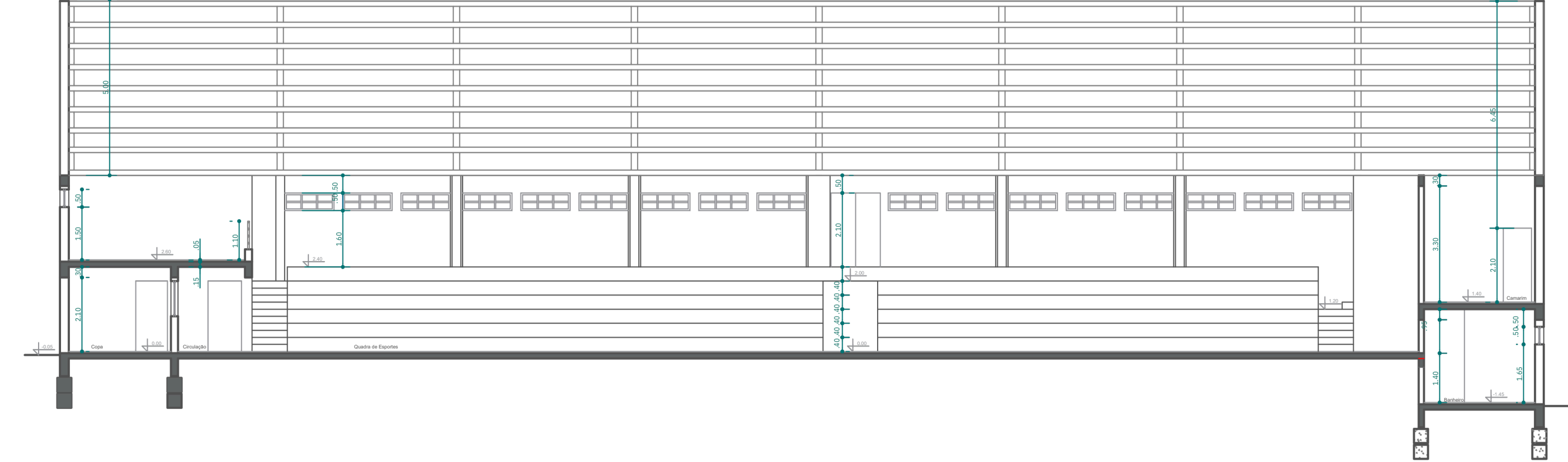
Planta Baixa Térreo
1:100



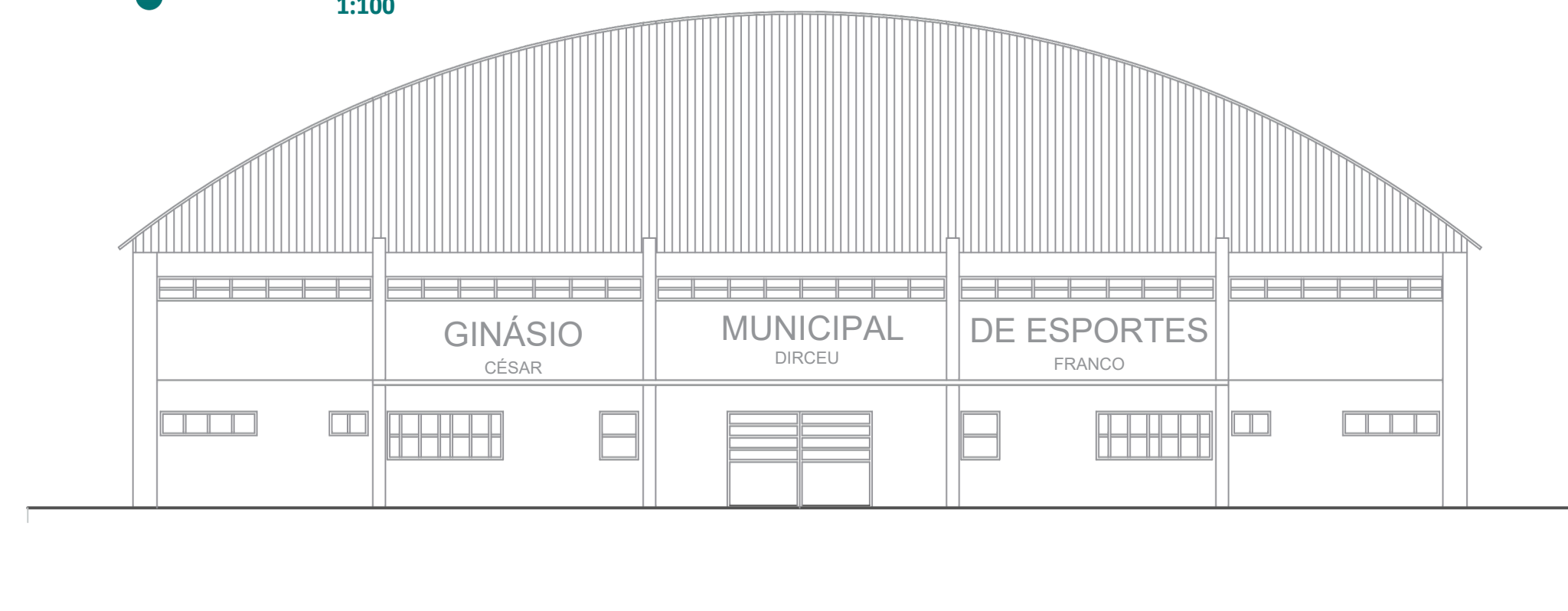
Planta Baixa Pav. superior
1:100



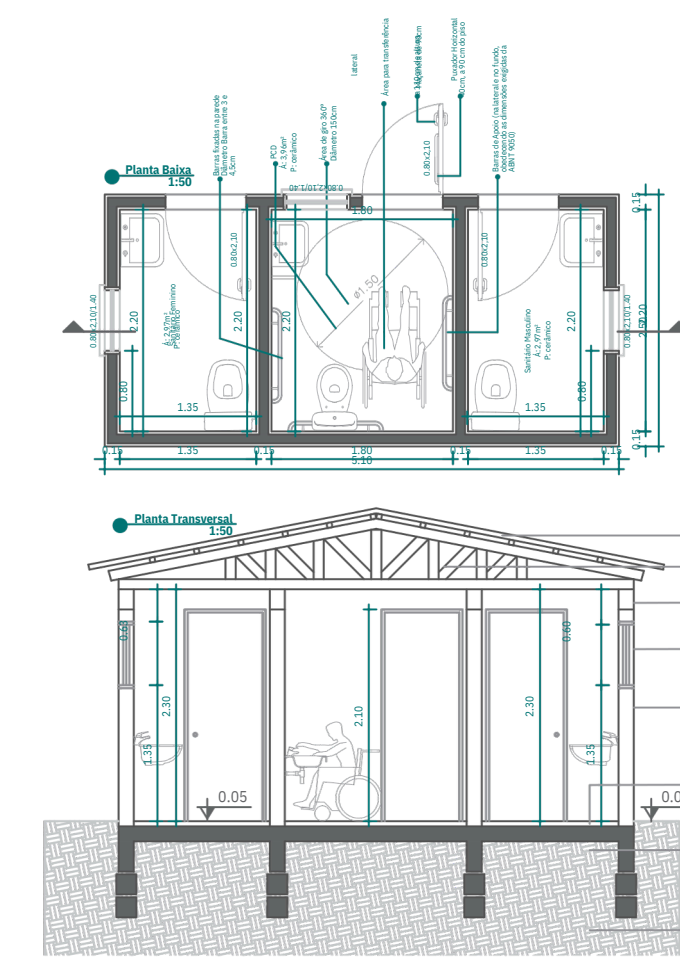
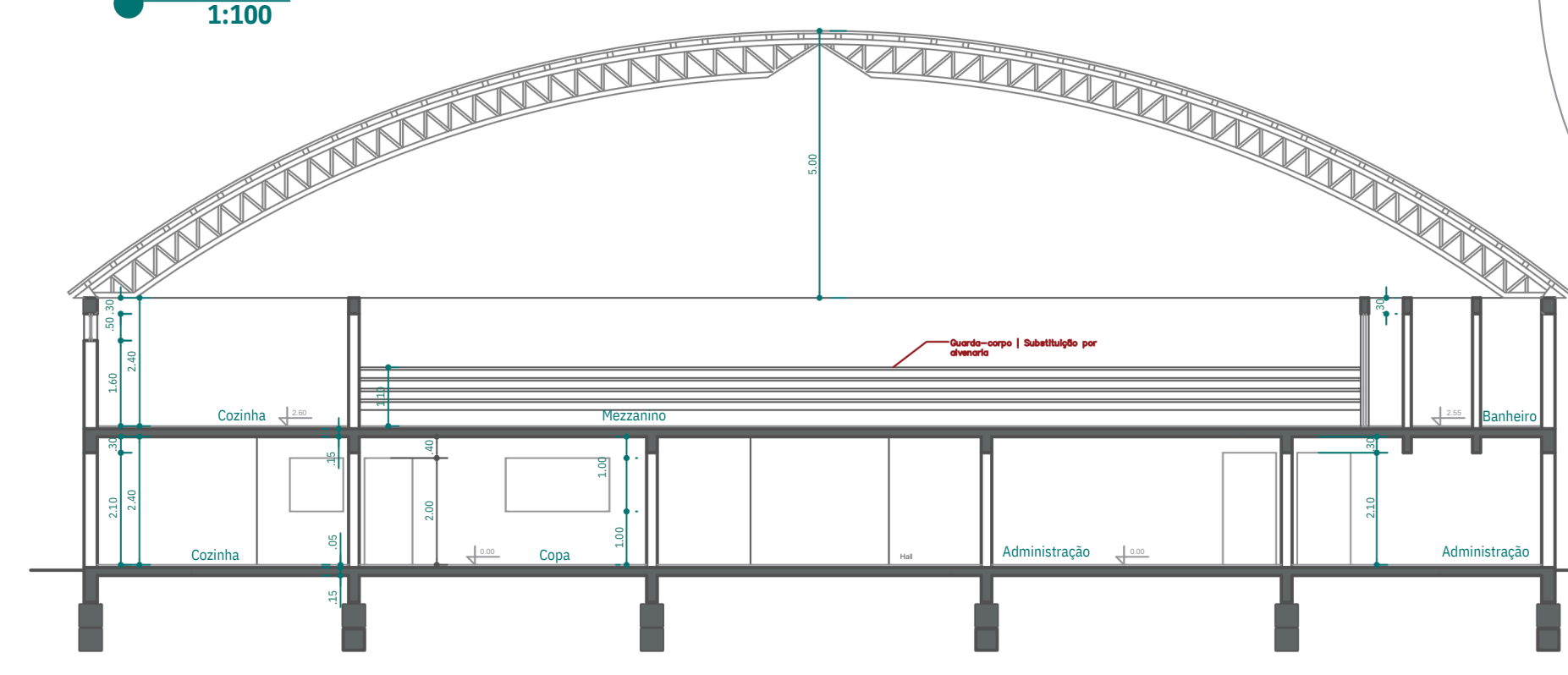
Corte BB''
1:100



Fachada Principal
1:100



Corte AA''
1:100



Estado do Rio Grande do Sul
PREFEITURA MUNICIPAL DE BOSSOROCA
SECRETARIA MUNICIPAL DE OBRAS E TRANSITO

RESP. TÉCNICO:
Tábita Siqueira da Luz
Arquiteta e Urbanista CAU/RS A134039-5

PREFEITO:
João Alberto Ourique do Nascimento - CPF 441.163.490-20

PRANCHA:
Plantas Baixas, Cortes e Fachadas

ASSUNTO:
Programa Avançar + Esporte: Infraestrutura Esportiva
Reforma do Ginásio e Estádio Municipais

GRAFICAÇÃO:
Márcio Oliveira

DATA:
Abr/2026

ESCALA:
Indicada

ÁREA TOTAL:
23.982,00m²

PRANCHA Nº:
01