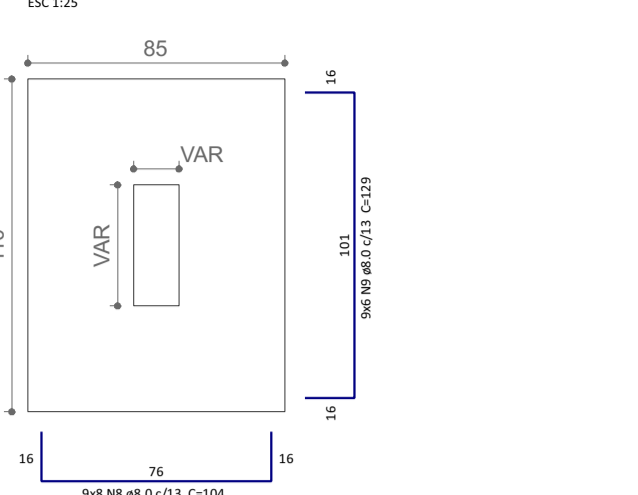
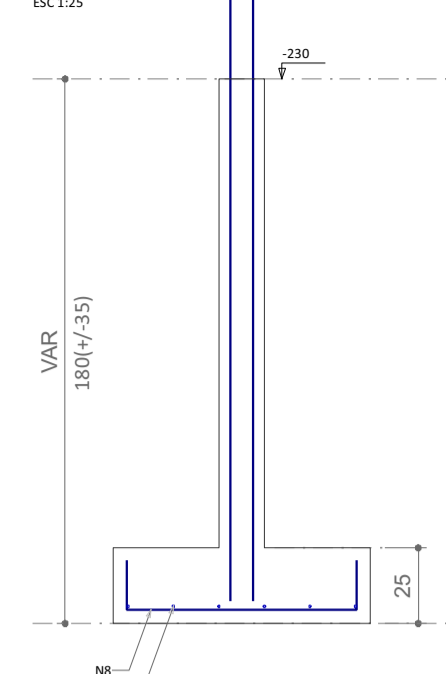


S8=S10=S12=S16=S22=S31=S37=S44=S51

PLANTA ESC. 1:25

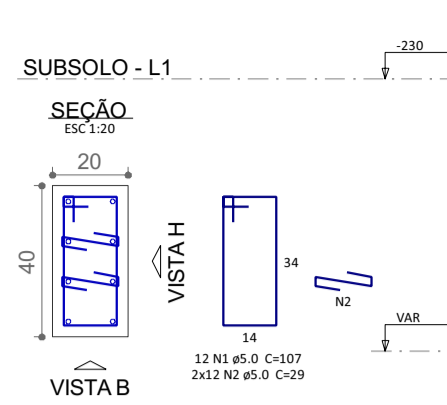


CORTE ESC. 1:25



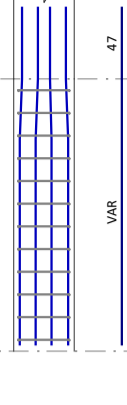
P10

SEÇÃO ESC. 1:20



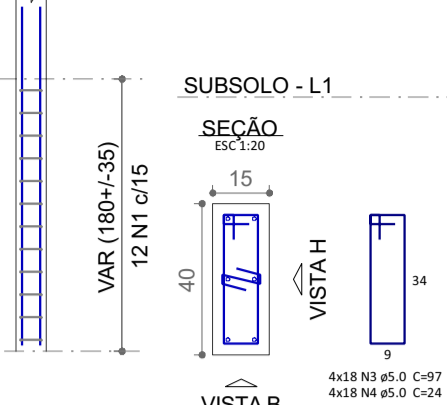
VISTA.H. ESC. 1:50

VISTA.B. ESC. 1:50



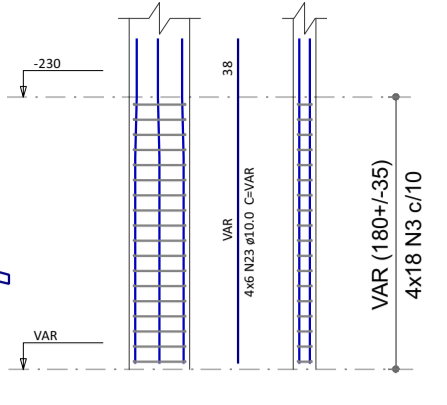
P8=P12=P22=P31

SEÇÃO ESC. 1:20



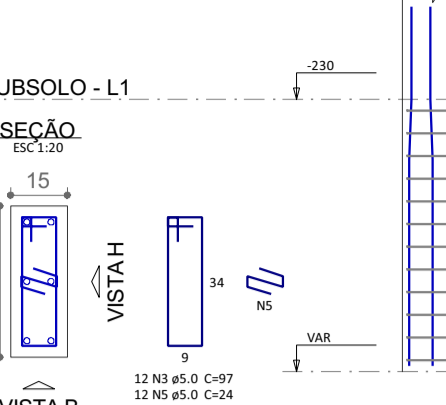
P16

SEÇÃO ESC. 1:20



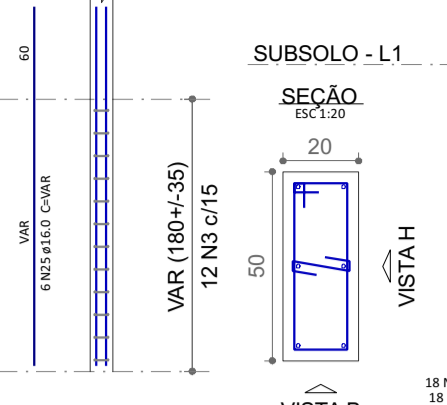
P37

SEÇÃO ESC. 1:20



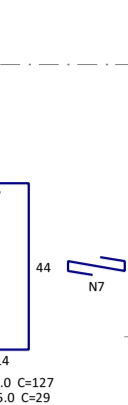
P44=P51

SEÇÃO ESC. 1:20



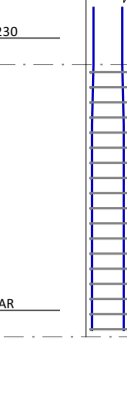
VISTA.H. ESC. 1:50

VISTA.B. ESC. 1:50



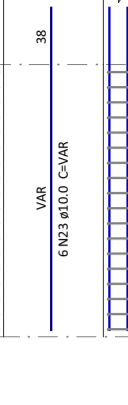
VISTA.H. ESC. 1:50

VISTA.B. ESC. 1:50



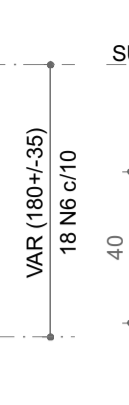
VISTA.H. ESC. 1:50

VISTA.B. ESC. 1:50



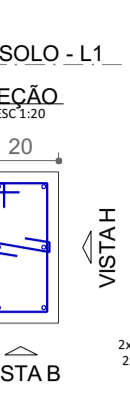
VISTA.H. ESC. 1:50

VISTA.B. ESC. 1:50



VISTA.H. ESC. 1:50

VISTA.B. ESC. 1:50



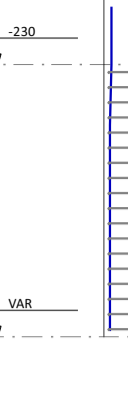
VISTA.H. ESC. 1:50

VISTA.B. ESC. 1:50



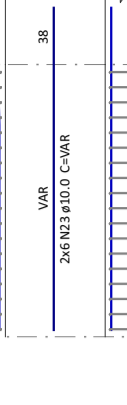
VISTA.H. ESC. 1:50

VISTA.B. ESC. 1:50



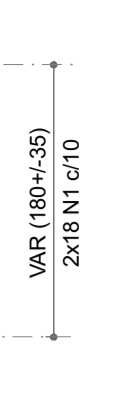
VISTA.H. ESC. 1:50

VISTA.B. ESC. 1:50



VISTA.H. ESC. 1:50

VISTA.B. ESC. 1:50



VISTA.H. ESC. 1:50

VISTA.B. ESC. 1:50



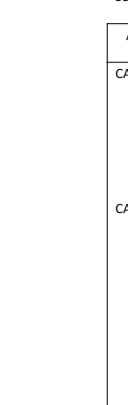
VISTA.H. ESC. 1:50

VISTA.B. ESC. 1:50



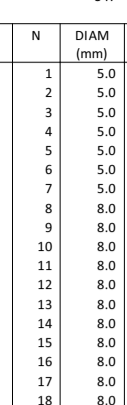
VISTA.H. ESC. 1:50

VISTA.B. ESC. 1:50



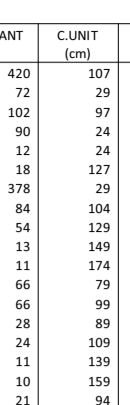
VISTA.H. ESC. 1:50

VISTA.B. ESC. 1:50



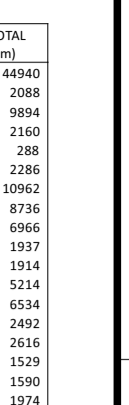
VISTA.H. ESC. 1:50

VISTA.B. ESC. 1:50



VISTA.H. ESC. 1:50

VISTA.B. ESC. 1:50



VISTA.H. ESC. 1:50

VISTA.B. ESC. 1:50



Relação do aço

CASO	N	DIAM (mm)	QUANT	C/STAL (cm)	C/STAL (cm)	C/STAL (cm)
59	114511		420	50	44443	
53	529		97	29	2088	
55	547		24	24	2360	
6	5.0		18	12	226	
5	5.0		12	24	288	
8	5.0		84	204	8756	
7	5.0		278	29	10562	
10	8.0		11	114	1514	
11	8.0		11	149	1617	
12	8.0		66	79	5214	
13	8.0		66	99	6234	
14	8.0		28	89	2492	
15	8.0		34	209	2814	
16	8.0		11	139	1529	
17	8.0		10	159	1590	
18	8.0		21	159	1590	
19	8.0		18	114	2052	
20	8.0		12	84	1008	
21	8.0		10	129	1290	
22	8.0		9	144	1296	
23	10.0		158	VAR	VAR	
24	12.5		32	VAR	VAR	
25	16.0		6	VAR	VAR	

Resumo do aço

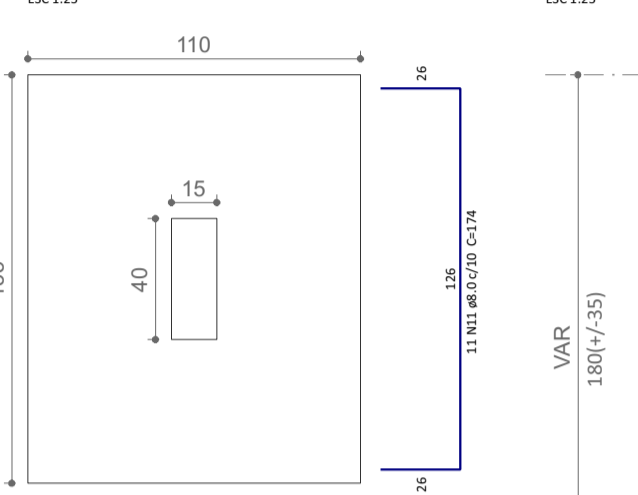
CASO	DIAM (mm)	C/STAL (cm)	QUANT (barras)	PESO (kg)
59	8.0	471.5	40	346
53	10.0	338.2	29	208.5
55	12.5	73.4	6	68.7
6	16.0	14.2	2	22.3
5	5.0	726.2	61	111.9

PESO TOTAL (kg): 885.6
CASO: 111.9
CASO: 885.6
CASO: 111.9

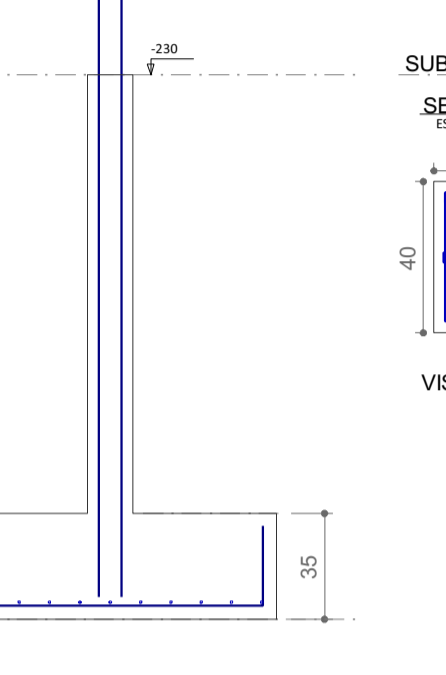
Volume de concreto (C-25) = 9.96 m³
Área de forma = 86.84 m²

S9

PLANTA ESC. 1:25

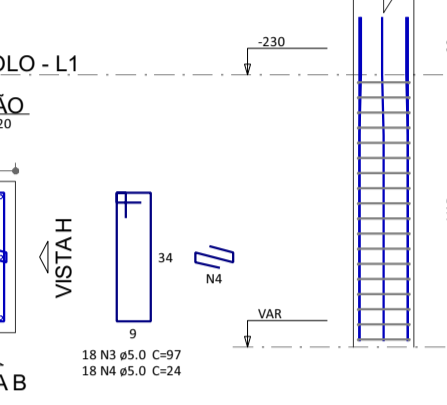


CORTE ESC. 1:25



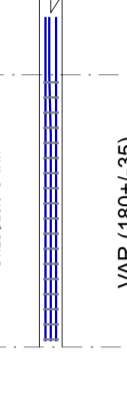
P9

SEÇÃO ESC. 1:20



VISTA.H. ESC. 1:50

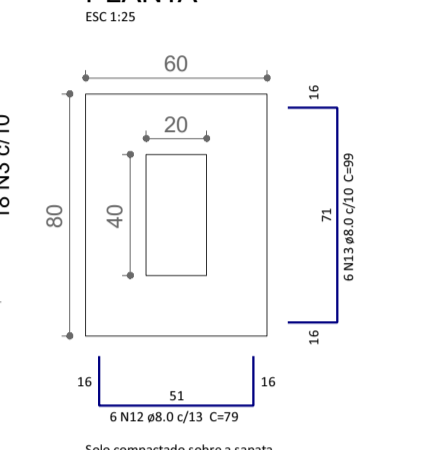
VISTA.B. ESC. 1:50



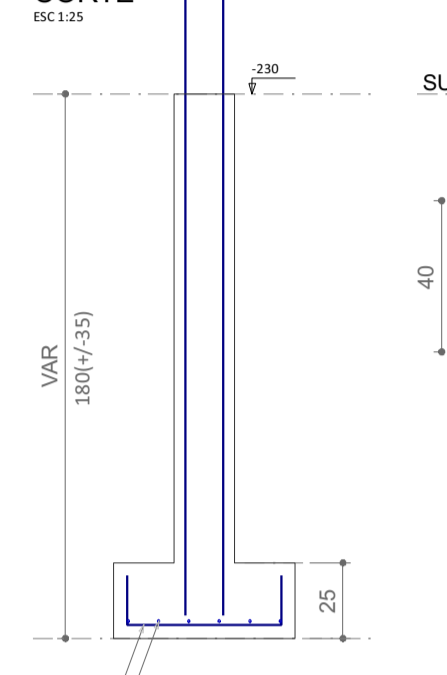
S11=S17=S26=S39=S46=S53=S54=S56=S57=S58

=S59

PLANTA ESC. 1:25

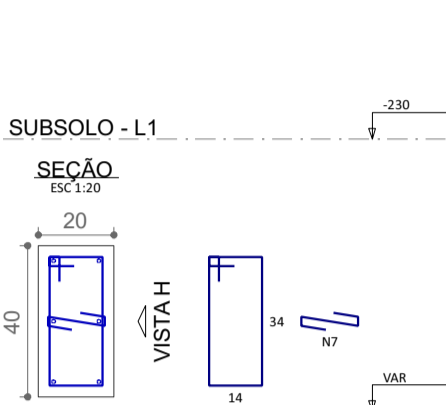


CORTE ESC. 1:25



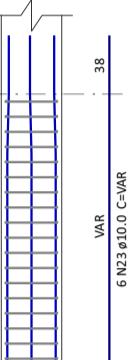
P11=P17=P26=P39=P46=P53=P54=P56=P57=P58=P59

SEÇÃO ESC. 1:20



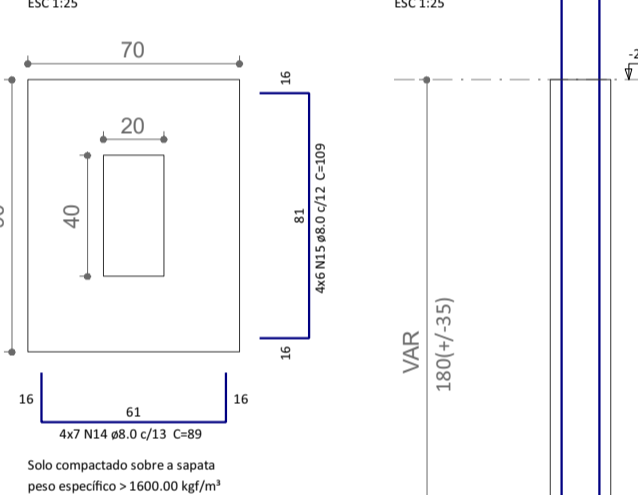
VISTA.H. ESC. 1:50

VISTA.B. ESC. 1:50

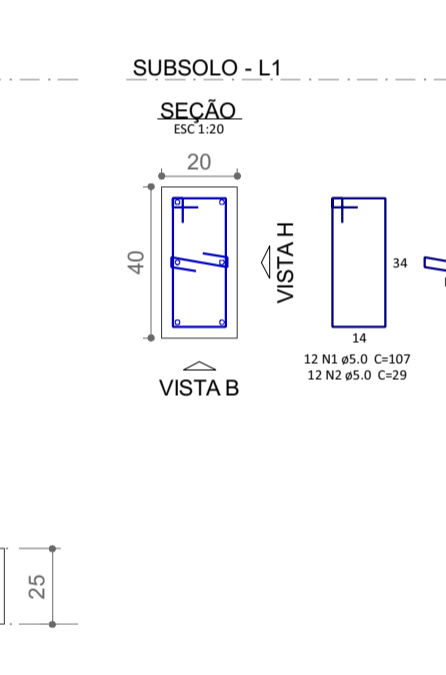


S23=S38=S45=S52

PLANTA ESC. 1:25

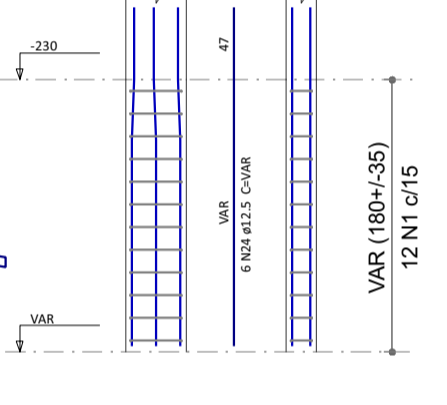


CORTE ESC. 1:25



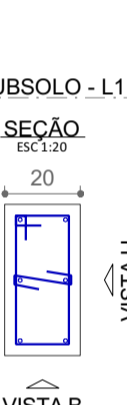
P23

SEÇÃO ESC. 1:20



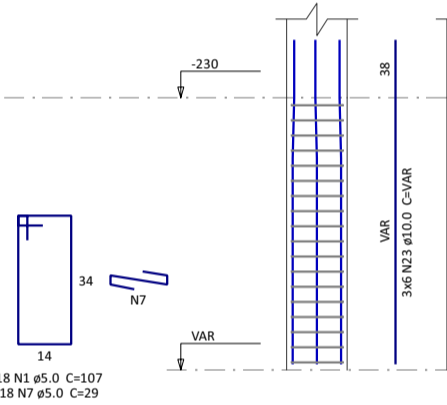
VISTA.H. ESC. 1:50

VISTA.B. ESC. 1:50



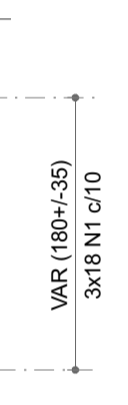
P38=P45=P52

SEÇÃO ESC. 1:20



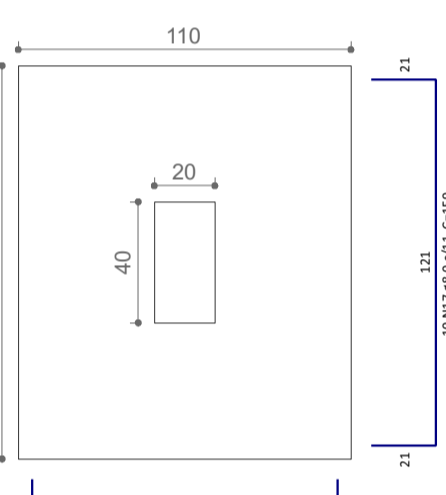
VISTA.H. ESC. 1:50

VISTA.B. ESC. 1:50

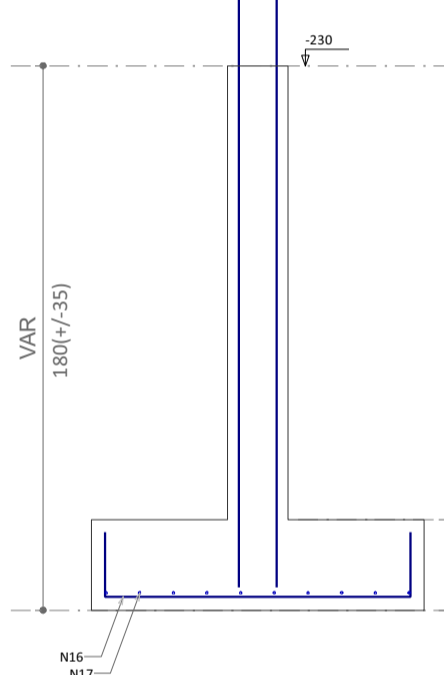


S29

PLANTA ESC. 1:25

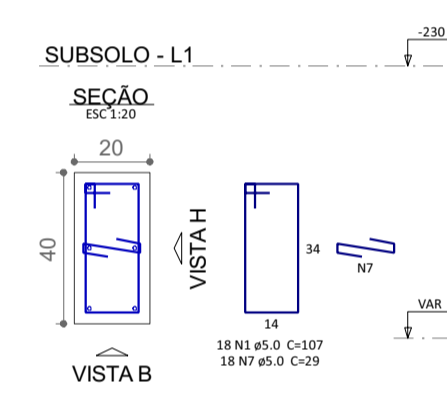


CORTE ESC. 1:25



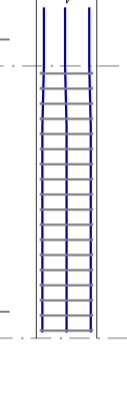
P29

SEÇÃO ESC. 1:20



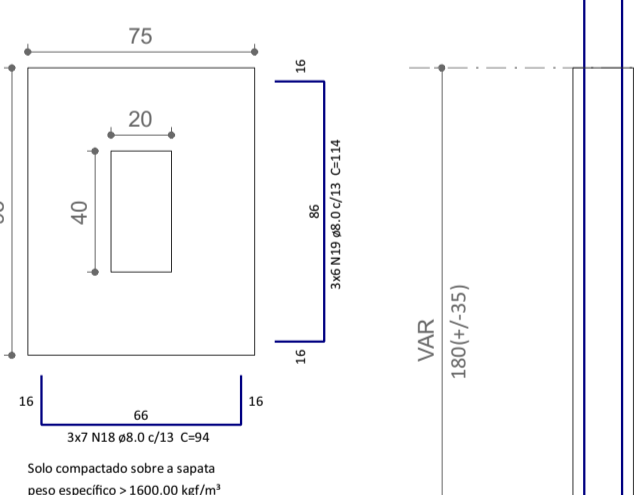
VISTA.H. ESC. 1:50

VISTA.B. ESC. 1:50

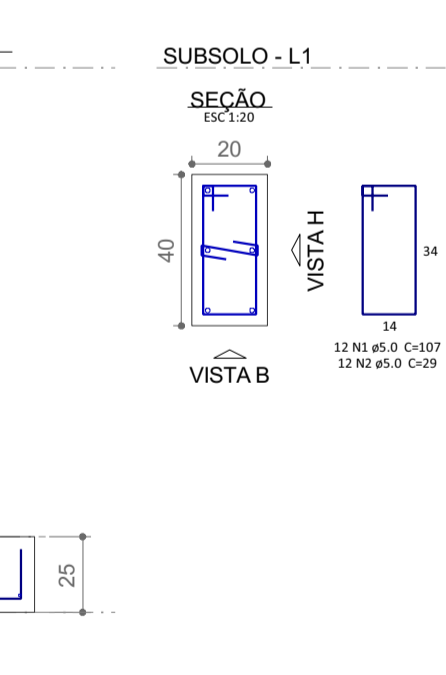


S32=S35=S36

PLANTA ESC. 1:25

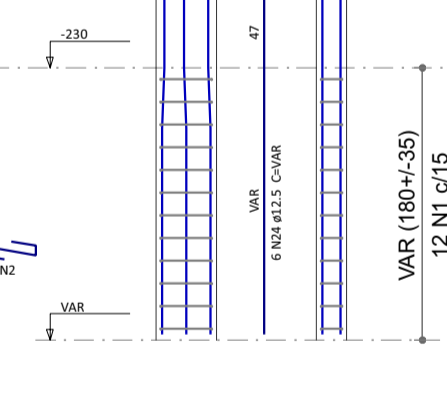


CORTE ESC. 1:25



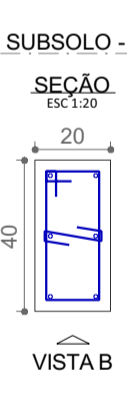
P32

SEÇÃO ESC. 1:20



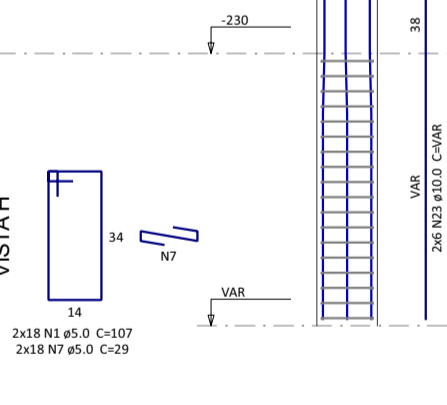
VISTA.H. ESC. 1:50

VISTA.B. ESC. 1:50



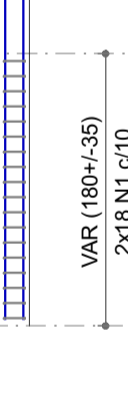
P35=P36

SEÇÃO ESC. 1:20



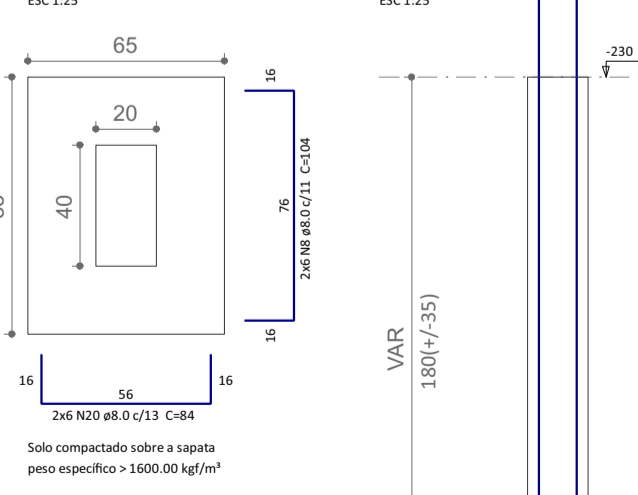
VISTA.H. ESC. 1:50

VISTA.B. ESC. 1:50

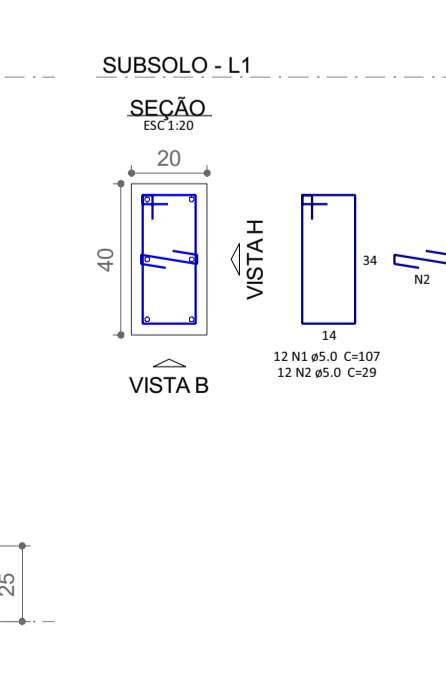


S33=S55

PLANTA ESC. 1:25

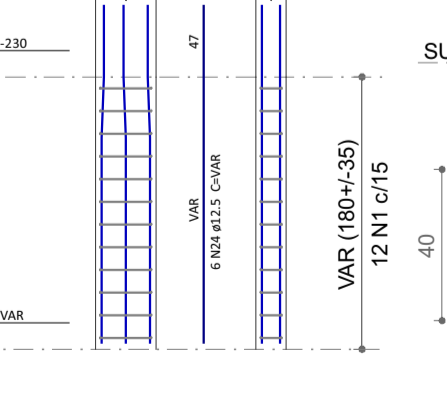


CORTE ESC. 1:25



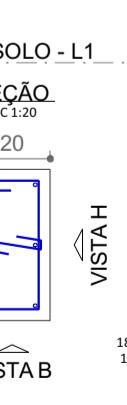
P33

SEÇÃO ESC. 1:20



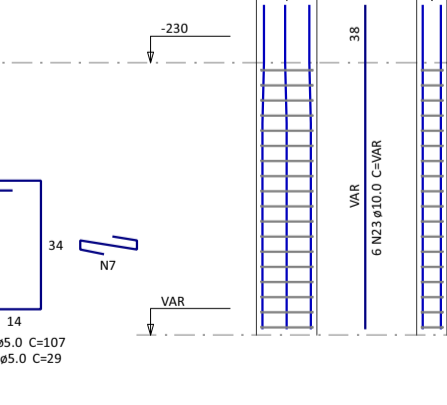
VISTA.H. ESC. 1:50

VISTA.B. ESC. 1:50



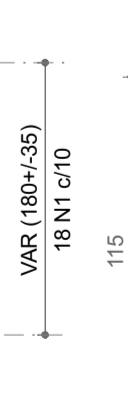
P55

SEÇÃO ESC. 1:20



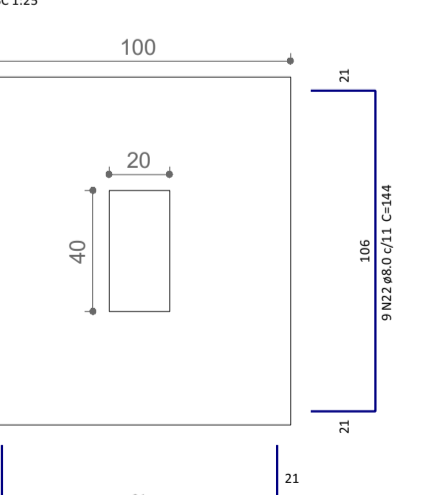
VISTA.H. ESC. 1:50

VISTA.B. ESC. 1:50

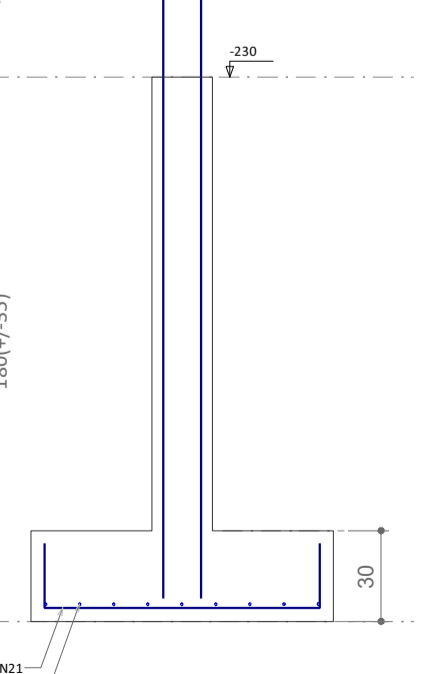


S47

PLANTA ESC. 1:25

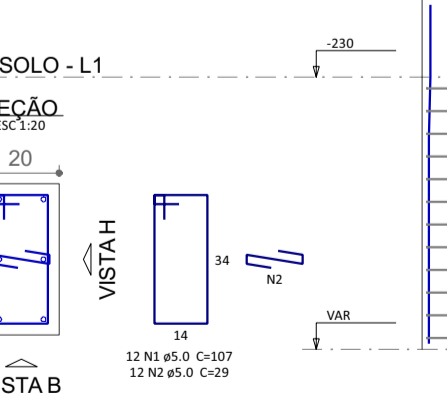


CORTE ESC. 1:25



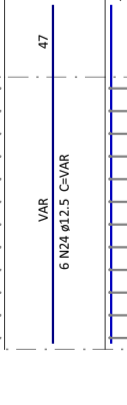
P47

SEÇÃO ESC. 1:20



VISTA.H. ESC. 1:50

VISTA.B. ESC. 1:50



NOTAS

1. ESTE PROJETO É PROPRIEDADE DO PROJETISTA REGISTRADO NO SELO. CONFORME LEI N°: 5194/66 NÃO DEVE SER UTILIZADO PARA QUALQUER OUTRA FINALIDADE QUE NÃO SE RELACIONE COM A EXECUÇÃO DA PRESENTE EDIFICAÇÃO, SENDO TERMINANTEMENTE VEDADA SUA COLOCAÇÃO A DISPOSIÇÃO DE TERCEIROS.
2. O PROJETISTA NÃO SE RESPONSABILIZARÁ POR EVENTUAIS ALTERAÇÕES DESTE PROJETO DURANTE SUA EXECUÇÃO. QUALQUER MODIFICAÇÃO, O MESMO DEVE SER CONTACTADO.
3. ESTE PROJETO FOI BASEADO NO LAYOUT E INFORMAÇÕES FORNECIDAS PELO ARQUITETO OU PROPRIETÁRIO.
4. QUALQUER MODIFICAÇÃO OU DÚVIDA DEVERÁ SER IMEDIATAMENTE COMUNICADA POR ESCRITO AO PROJETISTA.

PROJEMAX Arquitetura e Engenharia
Rua José Bonifácio, 27 Bairro Centro - Maimilano de Almeida/RS

Centro Dia Idoso
Rua José Ferreira Bueno, 476 Bairro Nossa Senhora Aparecida - Lagoa Vermelha/RS

Projeto: PROJEMAX P.2678991
Proprietário: Município de Lagoa Vermelha

Projeto: **Projeto Estrutural**

Folha: **CEN-EST-08-SUB-FUN**
Conteúdo: Fundações

Prancha: **8**
Conjunto: 1
Total: 55

Data: Dez/24
Escala: Escala
Desenho: Escala
Confirmação: PROJEMAX Arquitetura e Engenharia