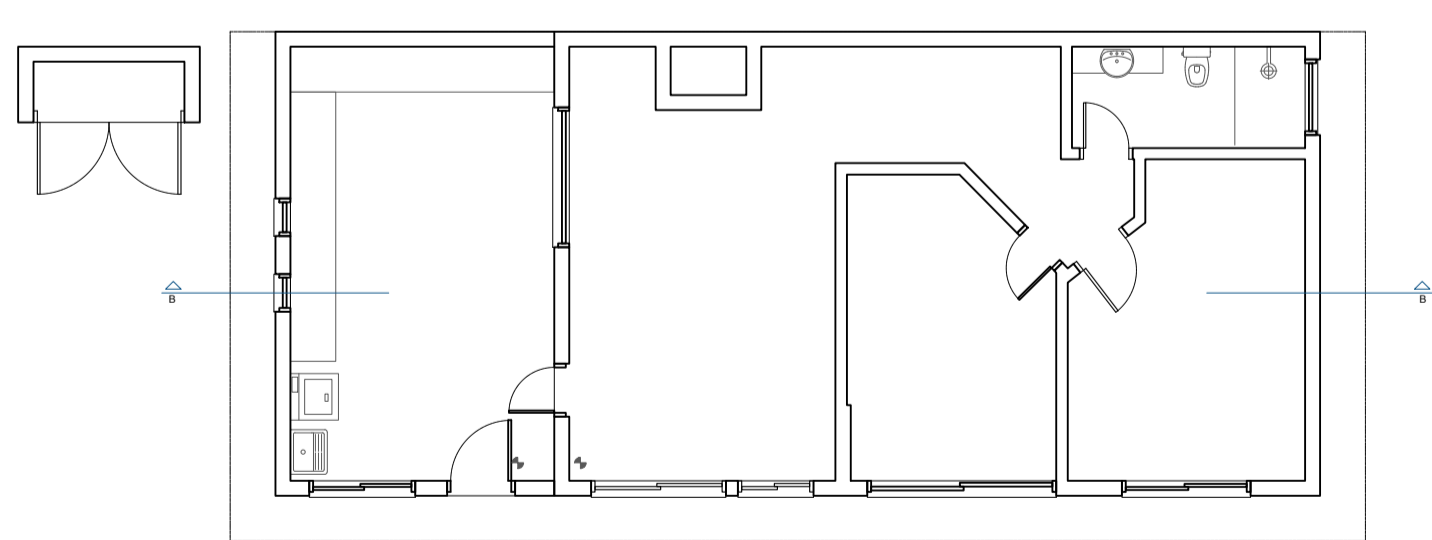


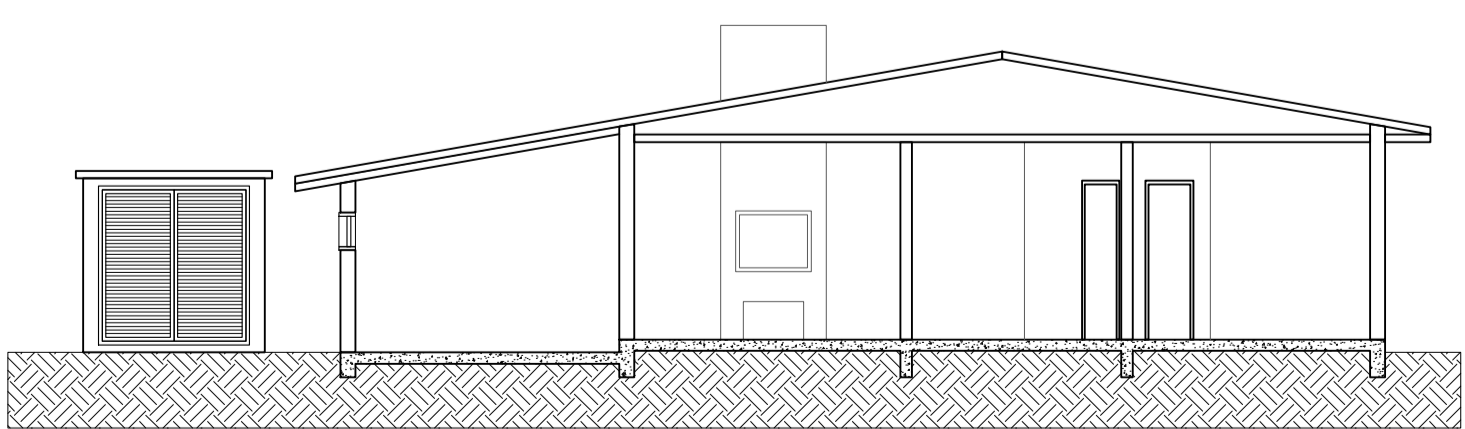
RUA SANTA MARIA

ESTRADA DO MAR

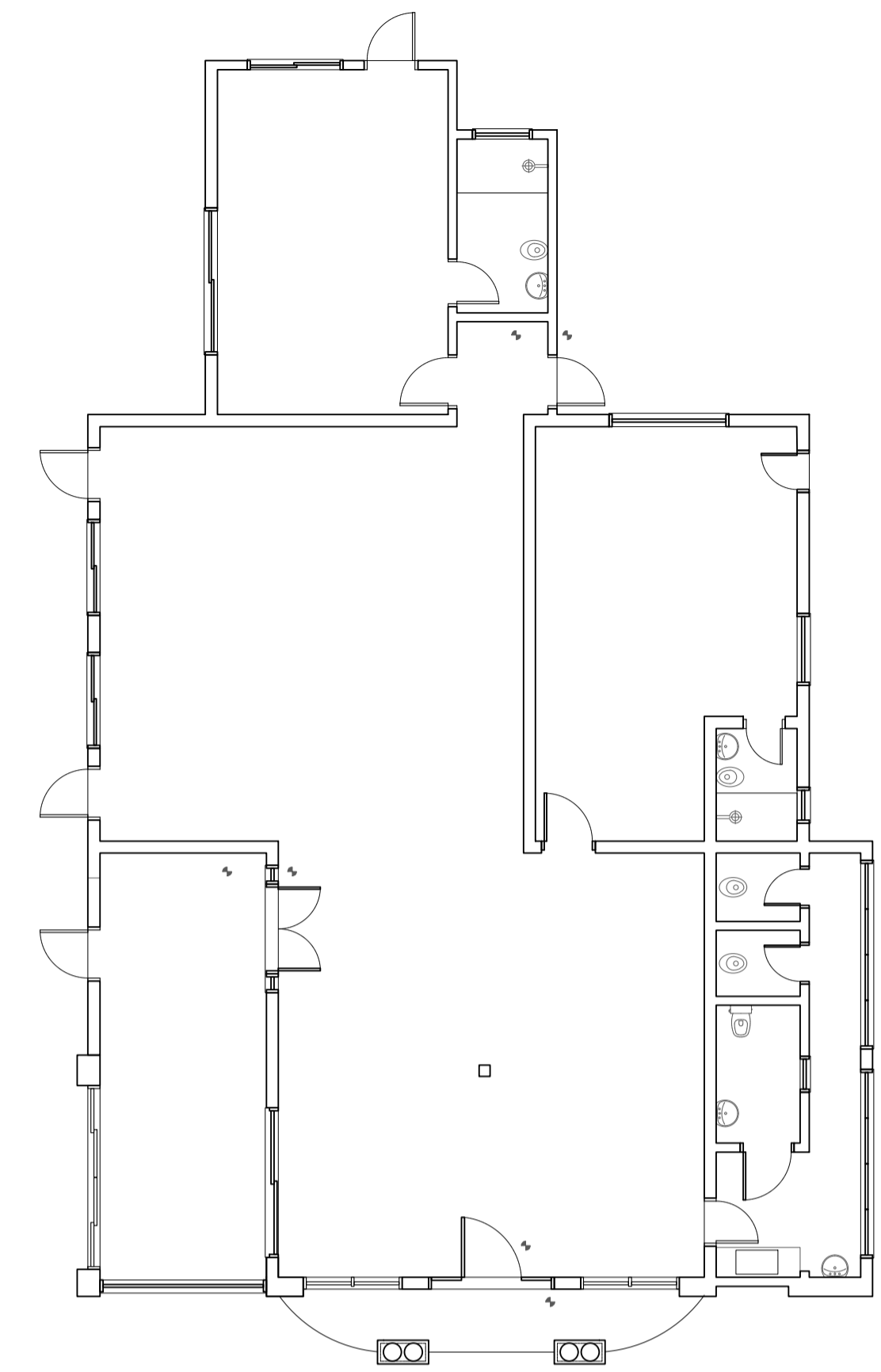
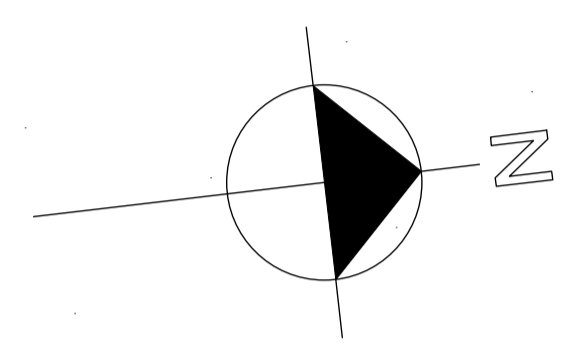
01 IMPLANTAÇÃO  
ESC.: 1/100



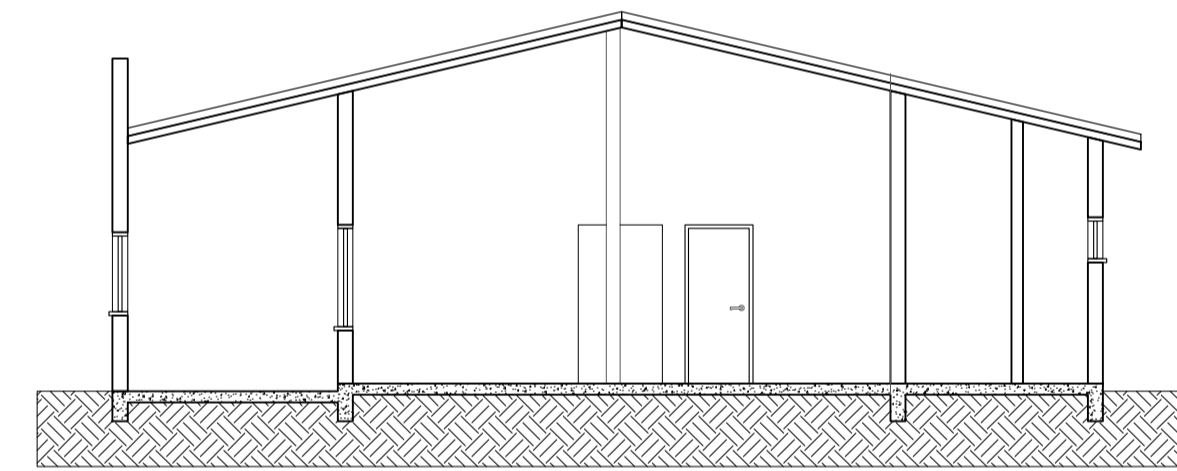
05 PLANTA BAIXA BLOCO 02  
ESC.: 1/100



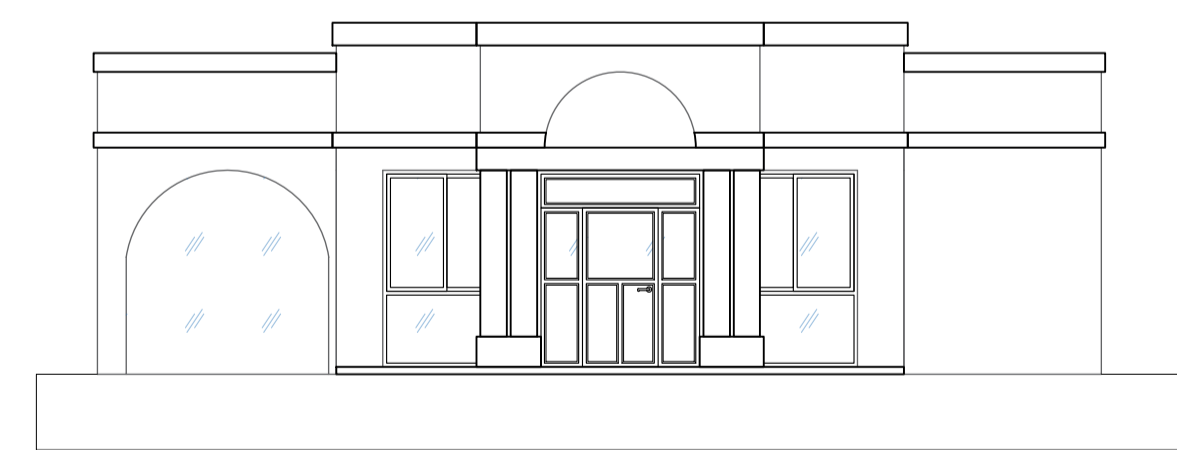
06 CORTE B-B'  
ESC.: 1/100



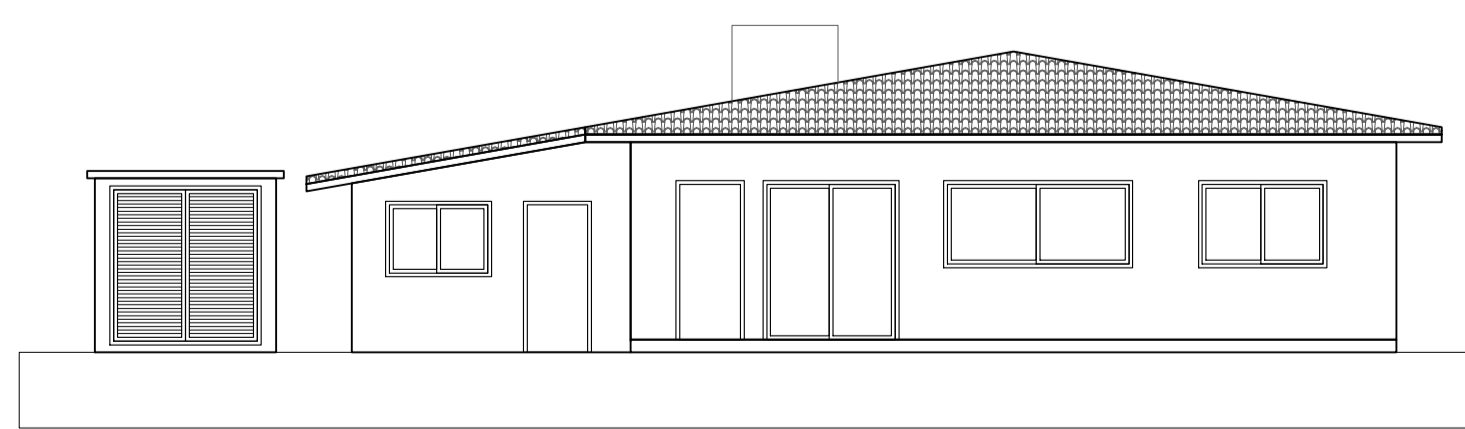
02 PLANTA BAIXA BLOCO 01  
ESC.: 1/100



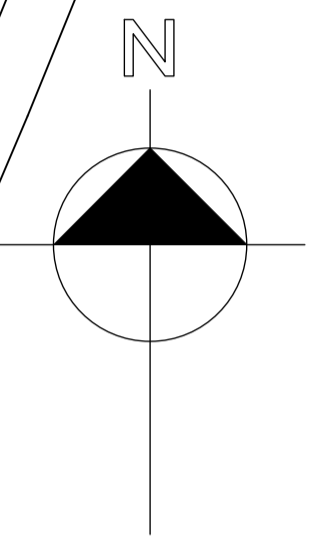
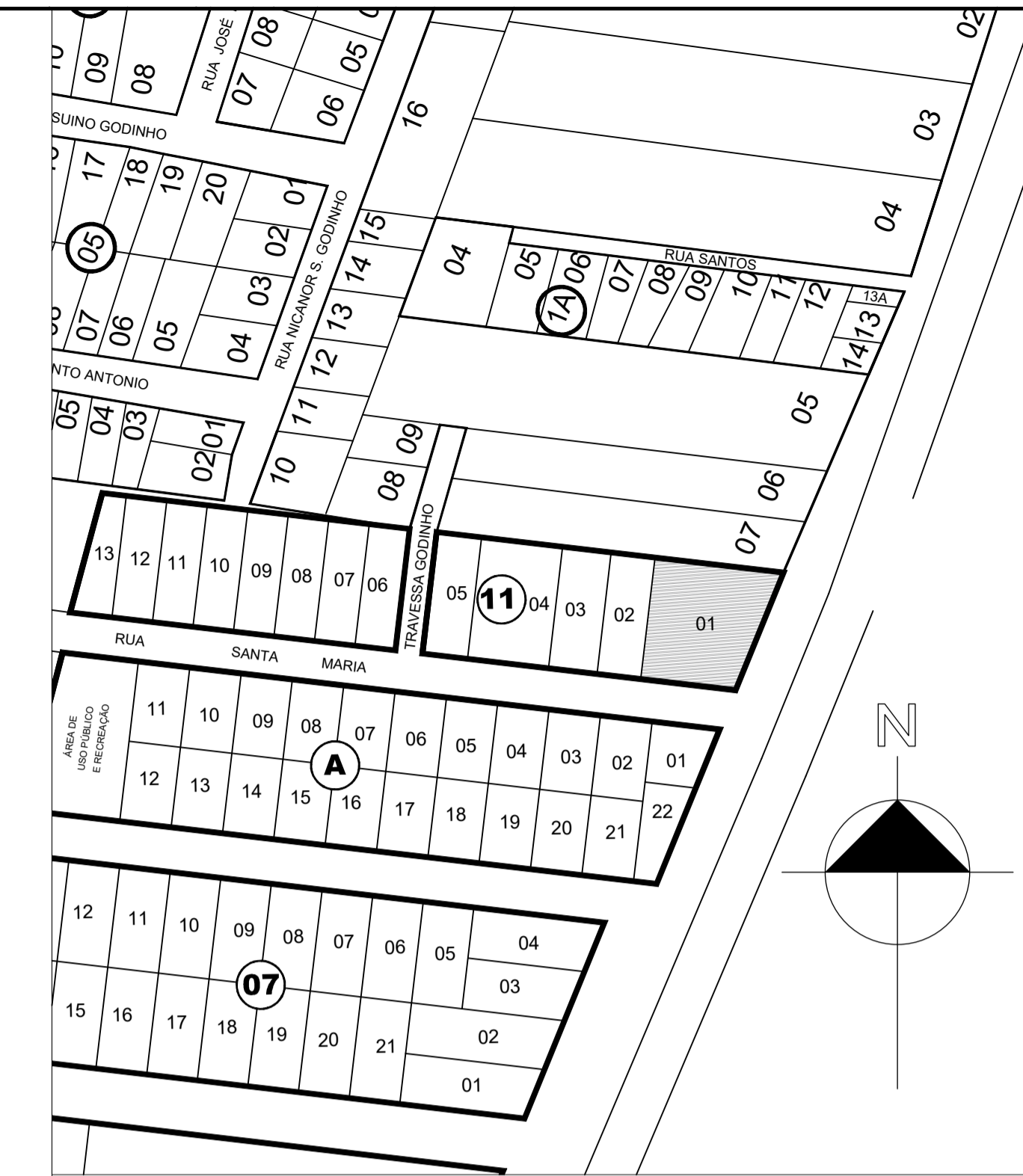
03 CORTE A-A'  
ESC.: 1/100



04 FACHADA BLOCO 01  
ESC.: 1/100



07 FACHADA BLOCO 02  
ESC.: 1/100



08 SITUAÇÃO  
sem escala

REVISÃO	ASSUNTO	RESPONSÁVEL	DATA
<b>PREFEITURA MUNICIPAL DE TORRES</b> <b>SECRETARIA MUNICIPAL DE EDUCAÇÃO</b> DIRETORIA ADMINISTRATIVA Rua José A. Picoral, 79 - Torres, RS Fone: (51) 3626.9150 ramal 601 www.torres.rs.gov.br - educacao@torres.rs.gov.br			
REFORMA CRECHE SÃO JORGE ESTRADA DO MAR, BAIRRO SÃO JORGE, TORRES/RS LOTE 01 DA QUADRA 11			DATA: MAIO/2026
ROSA MARIA LUMMERTZ SECRETARIA MUNICIPAL DE EDUCAÇÃO PORTARIA Nº 004/2025			ARQ. ANA CAROLINA CORNELI OZELAME CAU A151094-9 / MATRÍCULA 91569/1 RESPONSÁVEL TÉCNICA
<b>PROJETO ARQUITETÔNICO</b>			PRANCHA: <b>1/1</b>