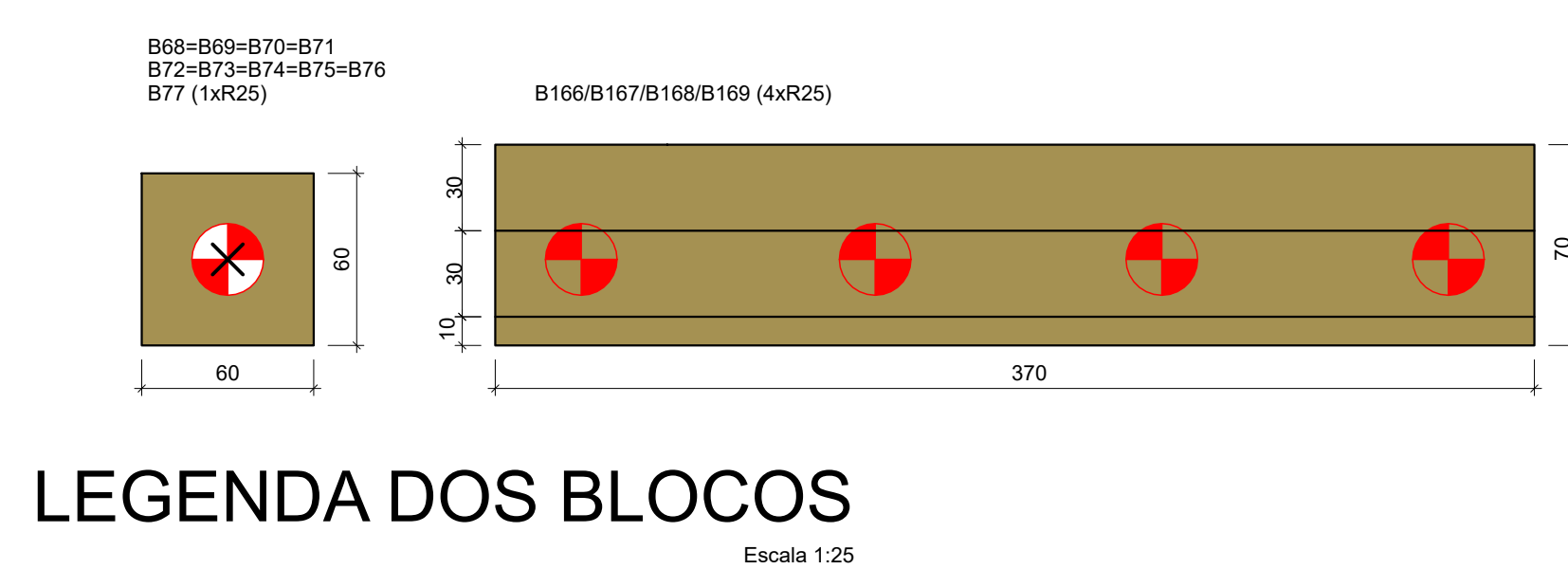


PLANTA DE LOCAÇÃO DAS ESTACAS
Escala 1:50



Nome	Seção (cm)	X (cm)	Y (cm)	Carga Máx. (tf)	Carga Min. (tf)	Pilar				Fundação				Bloco						
						Máx. Positivo (kgf/m)	Máx. Negativo (kgf/m)	Fx Máximo (tf)	Fy Máximo (tf)	Lado B (cm)	Lado H (cm)	H1/H2	re	Estaca (cm)	Base tub. (cm)					
P68	60x60	15105.32	15221.63	0.4	0.0	-200	-200	400	400	1.0	-1.1	0.5	-0.2	60	60	0	55	1	R25	-60
P69	60x60	15205.32	15221.63	0.3	0.3	300	-200	300	300	1.0	-1.1	0.5	-0.2	60	60	0	55	1	R25	-60
P70	60x60	15305.32	15221.63	0.3	0.3	400	-200	300	300	0.9	-1.1	0.5	-0.4	60	60	0	55	1	R25	-60
P71	60x60	15405.32	15221.63	0.8	0.1	1500	-200	400	500	0.8	-0.9	1.0	-0.6	60	60	0	55	1	R25	-60
P72	60x60	15505.32	15221.63	0.8	0.0	1600	-200	300	500	0.8	-1.1	0.9	-0.8	60	60	0	55	1	R25	-60
P73	60x60	15605.32	15221.63	0.3	0.3	600	-200	300	300	0.8	-1.1	0.4	-0.3	60	60	0	55	1	R25	-60
P74	60x60	15705.32	15221.63	0.3	0.3	600	-200	300	300	0.8	-1.1	0.4	-0.3	60	60	0	55	1	R25	-60
P75	60x60	15805.32	15221.63	0.4	0.2	600	-200	300	300	0.8	-1.0	0.3	-0.3	60	60	0	55	1	R25	-60
P76	60x60	15905.32	15221.63	0.4	0.3	2500	-1400	300	400	0.7	-0.9	0.8	-1.0	60	60	0	55	1	R25	-60
P77	60x60	16005.32	15221.63	4.2	-3.3	1700	-400	700	-200	0.8	-0.9	0.4	-0.6	60	60	0	55	1	R25	-60
P168	60x60	14855.34	15221.63	0.2	0.2	100	0	100	0	0.1	0.0	0.1	0.0	60	60	0	55	1	R25	-60
P167	60x60	14855.34	15424.17	0.2	0.2	100	0	100	0	0.1	0.0	0.1	0.0	60	60	0	55	1	R25	-60
P169	60x60	14855.34	15324.17	0.2	0.2	100	0	100	0	0.1	0.0	0.1	0.0	60	60	0	55	1	R25	-60
P169	60x60	14855.34	15221.63	0.2	0.2	100	0	100	0	0.1	0.0	0.1	0.0	60	60	0	55	1	R25	-60

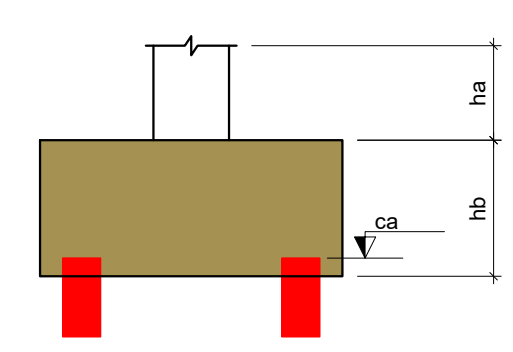
Os esforços indicados nesta tabela são os valores máximos obtidos para as combinações definidas para as fundações. Para análises complementares, deve-se consultar o relatório de esforços na fundação, que apresenta os valores calculados para cada combinação.

Bloco	Nome	Tipo	Coordenada X (cm)	Coordenada Y (cm)	Carga máx. (tf)	Carga mín. (tf)	Momento máx. (kgf.m)		Momento mín. (kgf.m)		Força horiz. máx. (tf)		Força horiz. mín. (tf)		CA (cm)
							if	if	if	if	if	if	if	if	
B88	E68	R25	15105.32	15221.63	0.78	0.43	2279.85	287.87	1.24	0.21	0.21	0.21	0.21	450	
B89	E69	R25	15205.32	15221.63	0.74	0.73	1597.28	379.12	1.07	0.12	0.12	0.12	0.12	450	
B70	E70	R25	15305.32	15221.63	0.73	0.73	1128.13	297.51	1.05	0.10	0.10	0.10	0.10	450	
B71	E71	R25	15405.32	15221.63	1.09	0.54	2580.63	492.89	1.34	0.17	0.17	0.17	0.17	450	
B72	E72	R25	15505.32	15221.63	0.95	0.47	2248.50	245.05	1.27	0.14	0.14	0.14	0.14	450	
B73	E73	R25	15605.32	15221.63	0.73	0.73	1790.51	69.44	1.03	0.12	0.12	0.12	0.12	450	
B74	E74	R25	15705.32	15221.63	0.74	0.73	759.18	80.49	1.04	0.13	0.13	0.13	0.13	450	
B75	E75	R25	15805.32	15221.63	0.87	0.81	268.45	106.28	1.05	0.14	0.14	0.14	0.14	450	
B76	E76	R25	15905.32	15221.63	0.79	0.76	2670.94	544.77	1.22	0.19	0.19	0.19	0.19	450	
B77	E77	R25	16005.32	15221.63	4.67	0.05	1932.76	217.58	0.87	0.18	0.18	0.18	0.18	450	
B166	E166	R25	14855.34	15524.15	0.64	0.64	-22.92	0.00	0.08	0.00	0.00	0.00	0.00	450	
B167	E167	R25	14855.34	15424.17	0.64	0.64	-22.92	0.00	0.08	0.00	0.00	0.00	0.00	450	
B168	E168	R25	14855.34	15324.17	0.64	0.64	-22.92	0.00	0.08	0.00	0.00	0.00	0.00	450	
B169	E169	R25	14855.34	15221.63	0.64	0.64	-22.92	0.00	0.08	0.00	0.00	0.00	0.00	450	

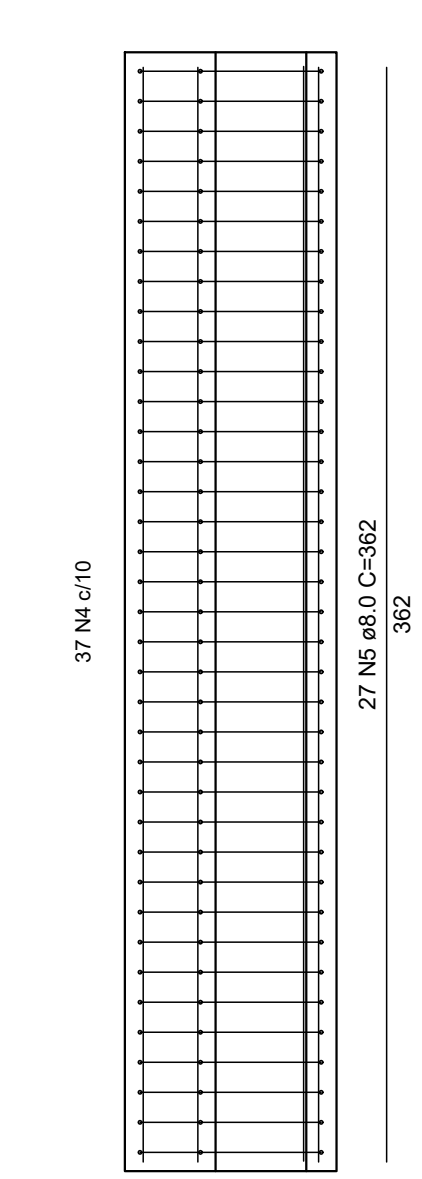
Localização no eixo X	
Coordenadas (cm)	Nome
14855.34	P168, P169
14855.35	P166
14857.04	P79-P82, P89-P92, P99-P102, P111-P114, P123-P126, P133-P136
14857.05	P103-P107
15105.32	P68
15205.32	P69
15305.32	P70
15405.32	P71
15505.32	P72
15605.32	P73
15705.32	P74
15805.32	P75
15905.32	P76
16005.32	P77

Localização no eixo Y	
Coordenadas (cm)	Nome
17501.97	P79-P82
17501.97	P89-P92
17001.97	P99-P102
16701.97	P111-P114
16401.97	P123-P126
16101.97	P133-P136
15601.97	P166-P167
15524.15	P166
15324.17	P168
15221.63	P169, P68, P69, P70, P71, P72, P73, P74, P75, P76, P77

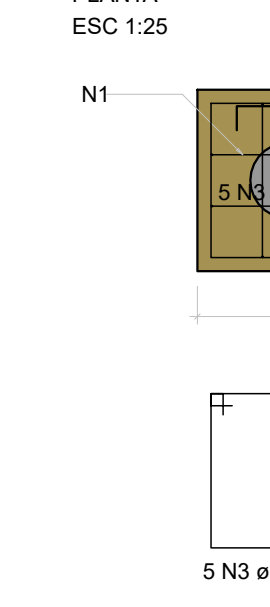
Estacas	
Simbologia	Nome
	R25
	25.00
	14



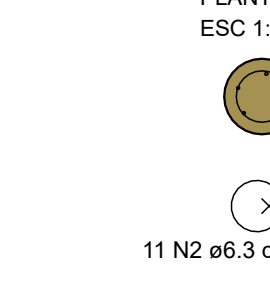
CANALETA SOB GRID 4xR25



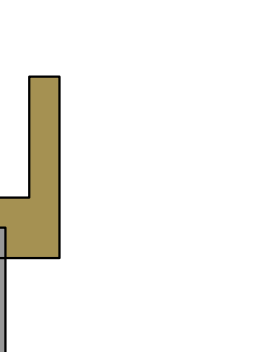
Blocos (10x) 1xR25



Estacas (14x) 1xR25



11 N2 ø6.3 c/20 C=73



37 N4 ø10 C=252



37 N4 ø10 C=252



37 N4 ø10 C=252

Relação do aço

ACQ	N	DIAM (mm)	QUANT	C.UNIT (cm)	C.TOTAL (cm)
CA50	1	3.0	40	171	6840
CA50	2	4.3	154	73	11421
CA50	3	6.0	50	219	10950
CA50	4	8.0	37	252	9324
CA50	5	8.0	27	362	9774
CA50	6	10.0	70	290	14000

Resumo do aço

ACQ	DIAM (mm)	C.TOTAL (cm)	PESO + 10% (kg)
CA50	6.3	112.5	30.3
CA50	8.0	299	120.8
CA50	10.0	140	94.9
CA50	8.0	68.4	11.6
CA50	285		
CA50	11.6		

Volume de concreto (25 MPa) = 5.32 m³
Área de forma = 21.71 m²

ATENÇÃO:
"ESTE PROJETO DE FUNDAÇÃO FOI DESENVOLVIDO COM BASE EM INFORMAÇÕES ESTIMADAS. PORTANTO, NÃO EXIME O EXECUTOR DA RESPONSABILIDADE DE REALIZAR UMA SONDAGEM E UM NOVO PROJETO DE FUNDAÇÃO."

NOTAS:
1- Para fundação deve ser feito uma sondagem no terreo para o correto dimensionamento da fundação;
2- As estacas são fundamentais para vencer carga de vento; Caso o solo seja impenetrável ao trado, deve-se fazer um novo projeto de fundação com base na sondagem do terreno.

AUTOR DO PROJETO : ENG. ATILA GONÇALVES BARCELOS DA SILVA DUVAL - CREA 101878743 D/GO

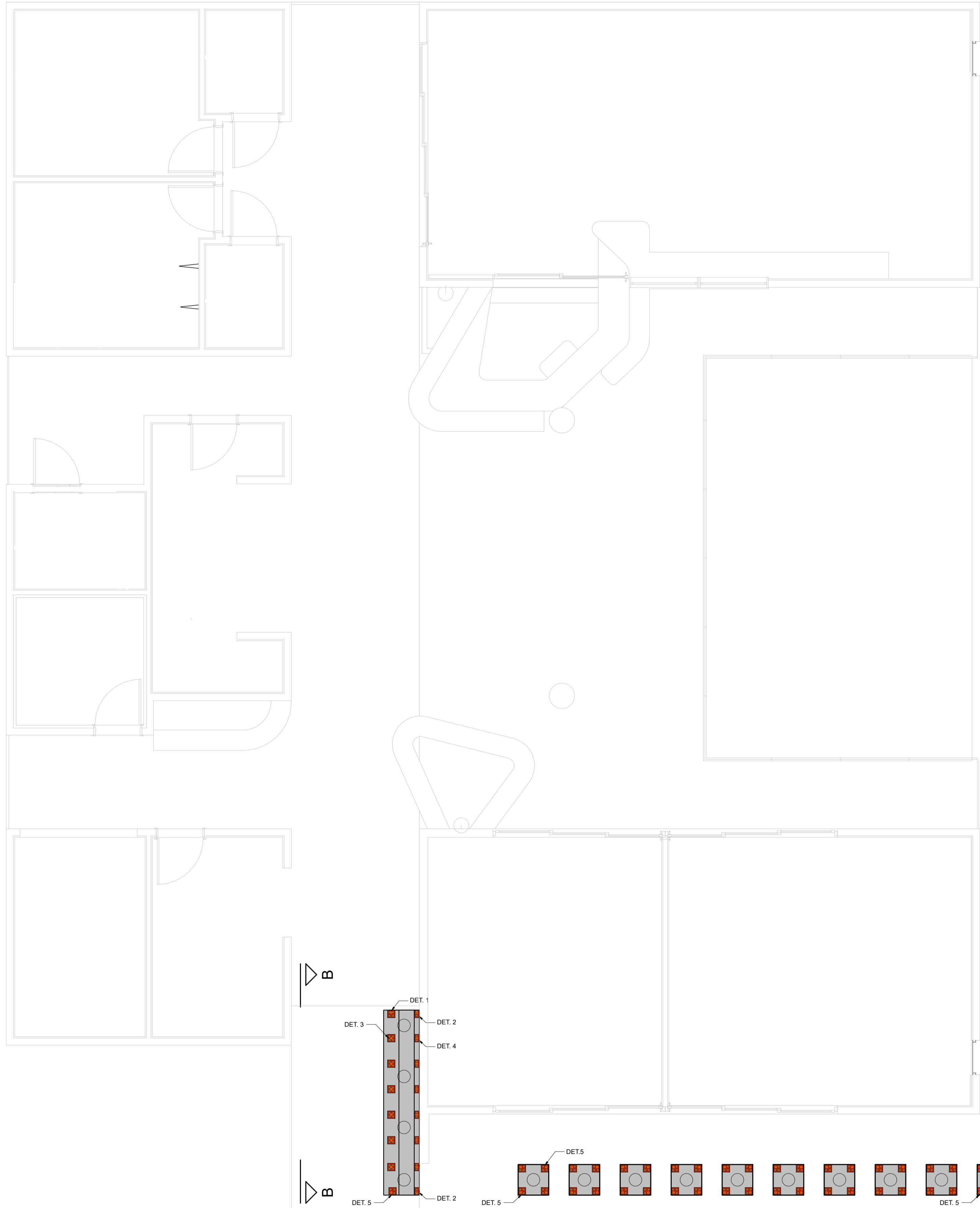
PROJETO 300

R. T. DE PROJETO: ENR. ATILA GONÇALVES BARCELOS DA SILVA DUVAL - CREA 101878743 D/GO

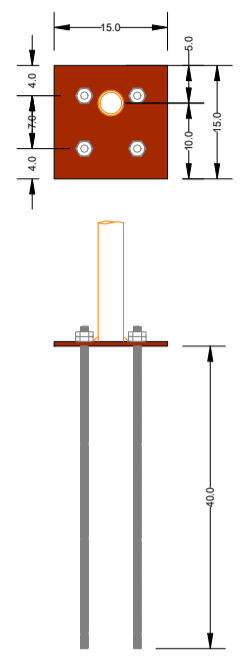
GRID NÚCLEO BÁSICO EDIFICADO

<p style="text-align: center;">LOCAÇÃO DAS ESTACAS TIPO</p>	<p style="font-size: 24pt;">01/06</p>
---	--

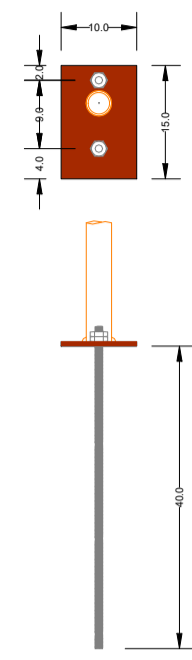
DATA: 02/04/2025 | ESCALA: INDICADA



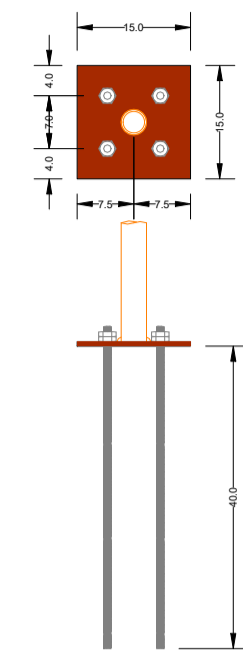
DET. 1
Escala 1:10



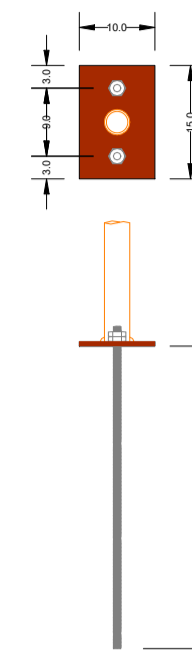
DET. 2
Escala 1:10



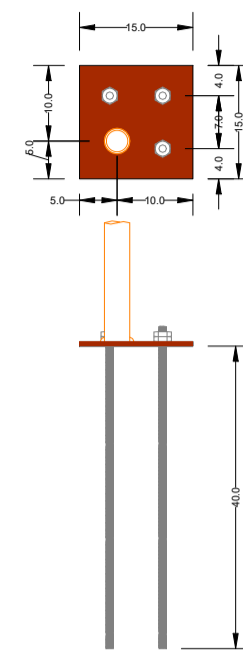
DET. 3
Escala 1:10



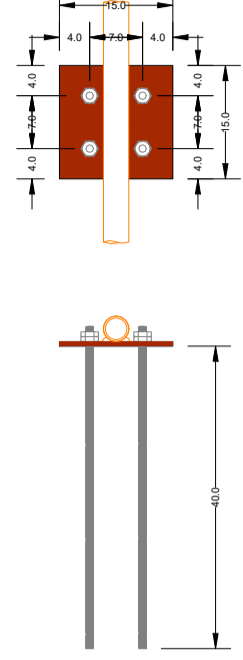
DET. 4
Escala 1:10



DET. 5
Escala 1:10



DET. 6
Escala 1:10



Pilares			
Nome	Seção (cm)	Elevação (cm)	Nível (cm)
P1	33,7mm(1 pol.) Leve NBR5580	0	-20
P2	33,7mm(1 pol.) Leve NBR5580	0	-20
P3	33,7mm(1 pol.) Leve NBR5580	0	-20
P4	33,7mm(1 pol.) Leve NBR5580	0	-20
P5	33,7mm(1 pol.) Leve NBR5580	0	-20
P6	33,7mm(1 pol.) Leve NBR5580	0	-20
P7	33,7mm(1 pol.) Leve NBR5580	0	-20
P8	33,7mm(1 pol.) Leve NBR5580	0	-20
P9	33,7mm(1 pol.) Leve NBR5580	0	-20
P10	33,7mm(1 pol.) Leve NBR5580	0	-20
P11	33,7mm(1 pol.) Leve NBR5580	0	-20
P12	33,7mm(1 pol.) Leve NBR5580	0	-20
P13	33,7mm(1 pol.) Leve NBR5580	0	-20
P14	33,7mm(1 pol.) Leve NBR5580	0	-20
P15	33,7mm(1 pol.) Leve NBR5580	0	-20
P16	33,7mm(1 pol.) Leve NBR5580	0	-20
P23	33,7mm(1 pol.) Leve NBR5580	0	-20
P24	33,7mm(1 pol.) Leve NBR5580	0	-20
P25	33,7mm(1 pol.) Leve NBR5580	0	-20
P26	33,7mm(1 pol.) Leve NBR5580	0	-20
P27	33,7mm(1 pol.) Leve NBR5580	0	-20
P28	33,7mm(1 pol.) Leve NBR5580	0	-20
P29	33,7mm(1 pol.) Leve NBR5580	0	-20
P30	33,7mm(1 pol.) Leve NBR5580	0	-20
P31	33,7mm(1 pol.) Leve NBR5580	0	-20
P32	33,7mm(1 pol.) Leve NBR5580	0	-20
P33	33,7mm(1 pol.) Leve NBR5580	0	-20
P34	33,7mm(1 pol.) Leve NBR5580	0	-20
P35	33,7mm(1 pol.) Leve NBR5580	0	-20
P36	33,7mm(1 pol.) Leve NBR5580	0	-20
P37	33,7mm(1 pol.) Leve NBR5580	0	-20
P38	33,7mm(1 pol.) Leve NBR5580	0	-20
P39	33,7mm(1 pol.) Leve NBR5580	0	-20
P40	33,7mm(1 pol.) Leve NBR5580	0	-20
P41	33,7mm(1 pol.) Leve NBR5580	0	-20
P42	33,7mm(1 pol.) Leve NBR5580	0	-20
P43	33,7mm(1 pol.) Leve NBR5580	0	-20
P44	33,7mm(1 pol.) Leve NBR5580	0	-20
P45	33,7mm(1 pol.) Leve NBR5580	0	-20
P46	33,7mm(1 pol.) Leve NBR5580	0	-20
P47	33,7mm(1 pol.) Leve NBR5580	0	-20
P48	33,7mm(1 pol.) Leve NBR5580	0	-20
P49	33,7mm(1 pol.) Leve NBR5580	0	-20
P50	33,7mm(1 pol.) Leve NBR5580	0	-20
P51	33,7mm(1 pol.) Leve NBR5580	0	-20
P52	33,7mm(1 pol.) Leve NBR5580	0	-20
P53	33,7mm(1 pol.) Leve NBR5580	0	-20
P54	33,7mm(1 pol.) Leve NBR5580	0	-20
P55	33,7mm(1 pol.) Leve NBR5580	0	-20
P56	33,7mm(1 pol.) Leve NBR5580	0	-20
P57	33,7mm(1 pol.) Leve NBR5580	0	-20
P58	33,7mm(1 pol.) Leve NBR5580	0	-20
P59	33,7mm(1 pol.) Leve NBR5580	0	-20
P60	33,7mm(1 pol.) Leve NBR5580	0	-20
P61	33,7mm(1 pol.) Leve NBR5580	0	-20
P62	33,7mm(1 pol.) Leve NBR5580	0	-20
P68	60x60	0	-20
P69	60x60	0	-20
P70	60x60	0	-20
P71	60x60	0	-20
P72	60x60	0	-20
P73	60x60	0	-20
P74	60x60	0	-20
P75	60x60	0	-20
P76	60x60	0	-20
P77	60x60	0	-20
P166	60x60	0	-20
P167	60x60	0	-20
P168	60x60	0	-20
P169	60x60	0	-20

Legenda dos pilares	
	Pilar que morre
	Pilar genérico que nasce

- NOTAS:
- 1- COTAS EM CENTIMETROS E NÍVEIS EM CENTÍMETROS;
 - 2- TODOS OS NÍVEIS SE REFEREM A COTA DE SOLEIRA (0,00)
 - 3- CONFERIR MEDIDAS NO LOCAL;
 - 4- MATERIAS:
TUBOS GALVANIZADO LEVE CONFORME NBR 5580;
CHAPAS DE BASE: AÇO SAC 350;
SOLDA: ARCO ELÉTRICO E-70XX AWS;
 - 5- CARGAS PREVISTAS:
Acidental de 100Kg/m² de cada base;
Ventos de até 50Km/h conforme NBR 6123;
 - 6- CONEXÕES SOLDADAS COM SOLDA EM TODO O CONTORNO (PERNA = 3mm);
 - 7- PARA SOBRECARGAS MAIORES QUE A ESPECIFICADA, CONSULTAR O CALCULISTA;

AUTOR DO PROJETO : ENG. ATILA GONÇALVES BARCELOS DA SILVA DUVAL – CREA 1018788743 D/GO

PROJETO 300

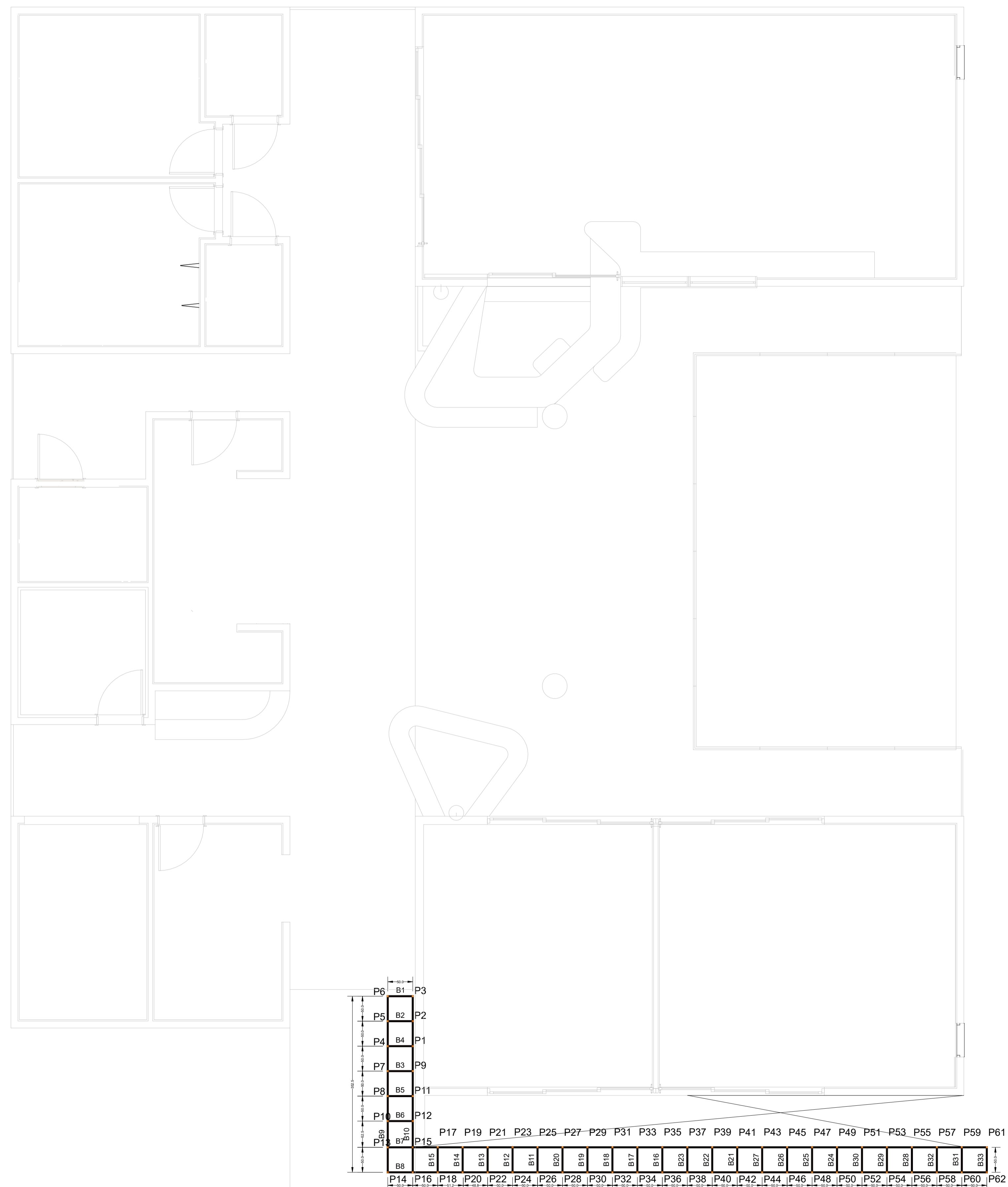
R. T. DE PROJETO: ENG. ATILA GONÇALVES BARCELOS DA SILVA DUVAL – CREA 1018788743 D/GO

GRID NÚCLEO BÁSICO EDIFICADO

ETAPA: **PLACAS DE BASE E LIGAÇÕES** PRANCHA Nº **02/06**

DISCIPLINA: **ESTRUTURA GRID** ARQUIVO: **NBE ESTR GR0_R01** DATA : **02/04/2025** ESCALA : **INDICADA**

FORMA placas de base (NÍVEL -20)
Escala 1:50



FORMA DO PAVIMENTO BASE 1 a 5 (NÍVEL 0 a NÍVEL 200)
Escala 1:50

Vigas			
Nome	Seção (cm)	Elevação (cm)	Nível (cm)
B1	33,7mm(1 pol.) Leve NBR5580	0	0
B2	33,7mm(1 pol.) Leve NBR5580	0	0
B3	33,7mm(1 pol.) Leve NBR5580	0	0
B4	33,7mm(1 pol.) Leve NBR5580	0	0
B5	33,7mm(1 pol.) Leve NBR5580	0	0
B6	33,7mm(1 pol.) Leve NBR5580	0	0
B7	33,7mm(1 pol.) Leve NBR5580	0	0
B8	33,7mm(1 pol.) Leve NBR5580	0	0
B9	33,7mm(1 pol.) Leve NBR5580	0	0
B10	33,7mm(1 pol.) Leve NBR5580	0	0
B11	33,7mm(1 pol.) Leve NBR5580	0	0
B12	33,7mm(1 pol.) Leve NBR5580	0	0
B13	33,7mm(1 pol.) Leve NBR5580	0	0
B14	33,7mm(1 pol.) Leve NBR5580	0	0
B15	33,7mm(1 pol.) Leve NBR5580	0	0
B16	33,7mm(1 pol.) Leve NBR5580	0	0
B17	33,7mm(1 pol.) Leve NBR5580	0	0
B18	33,7mm(1 pol.) Leve NBR5580	0	0
B19	33,7mm(1 pol.) Leve NBR5580	0	0
B20	33,7mm(1 pol.) Leve NBR5580	0	0
B21	33,7mm(1 pol.) Leve NBR5580	0	0
B22	33,7mm(1 pol.) Leve NBR5580	0	0
B23	33,7mm(1 pol.) Leve NBR5580	0	0
B24	33,7mm(1 pol.) Leve NBR5580	0	0
B25	33,7mm(1 pol.) Leve NBR5580	0	0
B26	33,7mm(1 pol.) Leve NBR5580	0	0
B27	33,7mm(1 pol.) Leve NBR5580	0	0
B28	33,7mm(1 pol.) Leve NBR5580	0	0
B29	33,7mm(1 pol.) Leve NBR5580	0	0
B30	33,7mm(1 pol.) Leve NBR5580	0	0
B31	33,7mm(1 pol.) Leve NBR5580	0	0
B32	33,7mm(1 pol.) Leve NBR5580	0	0
B33	33,7mm(1 pol.) Leve NBR5580	0	0

Pilares			
Nome	Seção (cm)	Elevação (cm)	Nível (cm)
P1	33,7mm(1 pol.) Leve NBR5580	0	0
P2	33,7mm(1 pol.) Leve NBR5580	0	0
P3	33,7mm(1 pol.) Leve NBR5580	0	0
P4	33,7mm(1 pol.) Leve NBR5580	0	0
P5	33,7mm(1 pol.) Leve NBR5580	0	0
P6	33,7mm(1 pol.) Leve NBR5580	0	0
P7	33,7mm(1 pol.) Leve NBR5580	0	0
P8	33,7mm(1 pol.) Leve NBR5580	0	0
P9	33,7mm(1 pol.) Leve NBR5580	0	0
P10	33,7mm(1 pol.) Leve NBR5580	0	0
P11	33,7mm(1 pol.) Leve NBR5580	0	0
P12	33,7mm(1 pol.) Leve NBR5580	0	0
P13	33,7mm(1 pol.) Leve NBR5580	0	0
P14	33,7mm(1 pol.) Leve NBR5580	0	0
P15	33,7mm(1 pol.) Leve NBR5580	0	0
P16	33,7mm(1 pol.) Leve NBR5580	0	0
P17	33,7mm(1 pol.) Leve NBR5580	0	0
P18	33,7mm(1 pol.) Leve NBR5580	0	0
P19	33,7mm(1 pol.) Leve NBR5580	0	0
P20	33,7mm(1 pol.) Leve NBR5580	0	0
P21	33,7mm(1 pol.) Leve NBR5580	0	0
P22	33,7mm(1 pol.) Leve NBR5580	0	0
P23	33,7mm(1 pol.) Leve NBR5580	0	0
P24	33,7mm(1 pol.) Leve NBR5580	0	0
P25	33,7mm(1 pol.) Leve NBR5580	0	0
P26	33,7mm(1 pol.) Leve NBR5580	0	0
P27	33,7mm(1 pol.) Leve NBR5580	0	0
P28	33,7mm(1 pol.) Leve NBR5580	0	0
P29	33,7mm(1 pol.) Leve NBR5580	0	0
P30	33,7mm(1 pol.) Leve NBR5580	0	0
P31	33,7mm(1 pol.) Leve NBR5580	0	0
P32	33,7mm(1 pol.) Leve NBR5580	0	0
P33	33,7mm(1 pol.) Leve NBR5580	0	0
P34	33,7mm(1 pol.) Leve NBR5580	0	0
P35	33,7mm(1 pol.) Leve NBR5580	0	0
P36	33,7mm(1 pol.) Leve NBR5580	0	0
P37	33,7mm(1 pol.) Leve NBR5580	0	0
P38	33,7mm(1 pol.) Leve NBR5580	0	0
P39	33,7mm(1 pol.) Leve NBR5580	0	0
P40	33,7mm(1 pol.) Leve NBR5580	0	0
P41	33,7mm(1 pol.) Leve NBR5580	0	0
P42	33,7mm(1 pol.) Leve NBR5580	0	0
P43	33,7mm(1 pol.) Leve NBR5580	0	0
P44	33,7mm(1 pol.) Leve NBR5580	0	0
P45	33,7mm(1 pol.) Leve NBR5580	0	0
P46	33,7mm(1 pol.) Leve NBR5580	0	0
P47	33,7mm(1 pol.) Leve NBR5580	0	0
P48	33,7mm(1 pol.) Leve NBR5580	0	0
P49	33,7mm(1 pol.) Leve NBR5580	0	0
P50	33,7mm(1 pol.) Leve NBR5580	0	0
P51	33,7mm(1 pol.) Leve NBR5580	0	0
P52	33,7mm(1 pol.) Leve NBR5580	0	0
P53	33,7mm(1 pol.) Leve NBR5580	0	0
P54	33,7mm(1 pol.) Leve NBR5580	0	0
P55	33,7mm(1 pol.) Leve NBR5580	0	0
P56	33,7mm(1 pol.) Leve NBR5580	0	0
P57	33,7mm(1 pol.) Leve NBR5580	0	0
P58	33,7mm(1 pol.) Leve NBR5580	0	0
P59	33,7mm(1 pol.) Leve NBR5580	0	0
P60	33,7mm(1 pol.) Leve NBR5580	0	0
P61	33,7mm(1 pol.) Leve NBR5580	0	0
P62	33,7mm(1 pol.) Leve NBR5580	0	0

Legenda dos pilares

Pilar genérico que passa

Pilar genérico que nasce

Legenda das vigas e paredes

Viga genérica

AUTOR DO PROJETO : ENG. ATILA GONÇALVES BARCELOS DA SILVA DUVAL – CREA 1018788743 D/GO

PROJETO 300

R. T. DE PROJETO: ENG. ATILA GONÇALVES BARCELOS DA SILVA DUVAL – CREA 1018788743 D/GO

GRID NÚCLEO BÁSICO EDIFICADO

ETAPA:

GRID DA BASE 1 A BASE 5

NÍVEL 0 A NÍVEL 200

DISCIPLINA: ESTRUTURA GRID

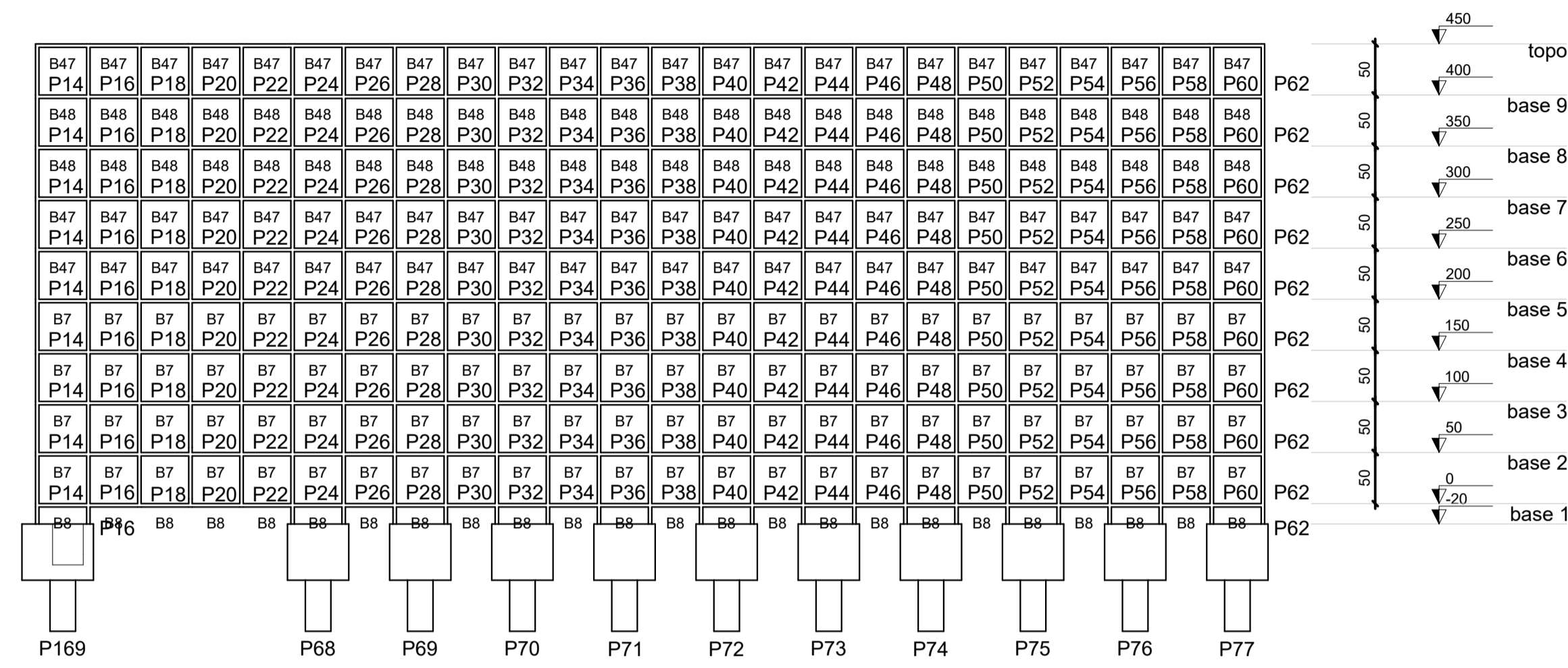
ARQUIVO: NBR_ESTR_GRID_R01

DATA : 02/04/2025

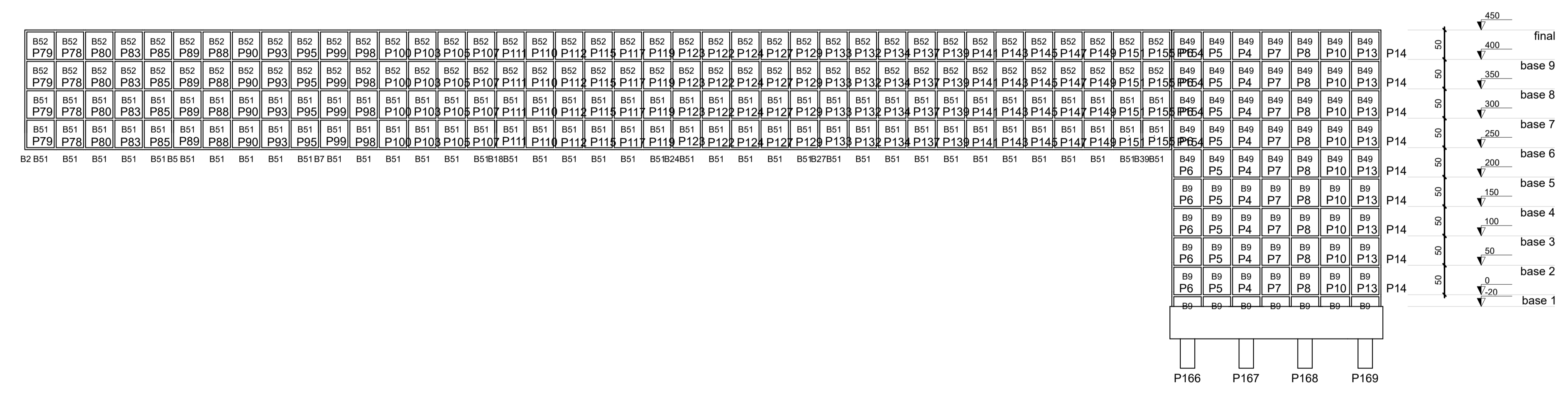
PRANCHA Nº

03/06


ESCALA : 1/50



CORTE AA
Escala 1:50



CORTE B-B
Escala 1:50

			
AUTOR DO PROJETO : ENG. ATILA GONÇALVES BARCELOS DA SILVA DUVAL - CREA 1018788743 D/GO			
PROJETO 300			
R. T. DE PROJETO: ENG. ATILA GONÇALVES BARCELOS DA SILVA DUVAL - CREA 1018788743 D/GO			
GRID NÚCLEO BÁSICO EDIFICADO			
ETAPA: CORTE A-A e CORTE B-B			PRANCHA Nº: 06/06
DISCIPLINA: ESTRUTURA GRID	ARQUIVO: NBE ESTR_GRID_R01	DATA : 02/04/2025	ESCALA : 1/50