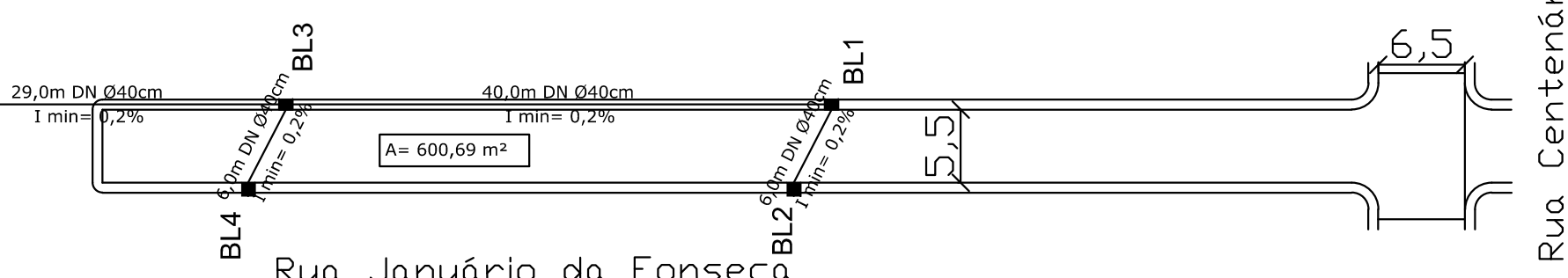
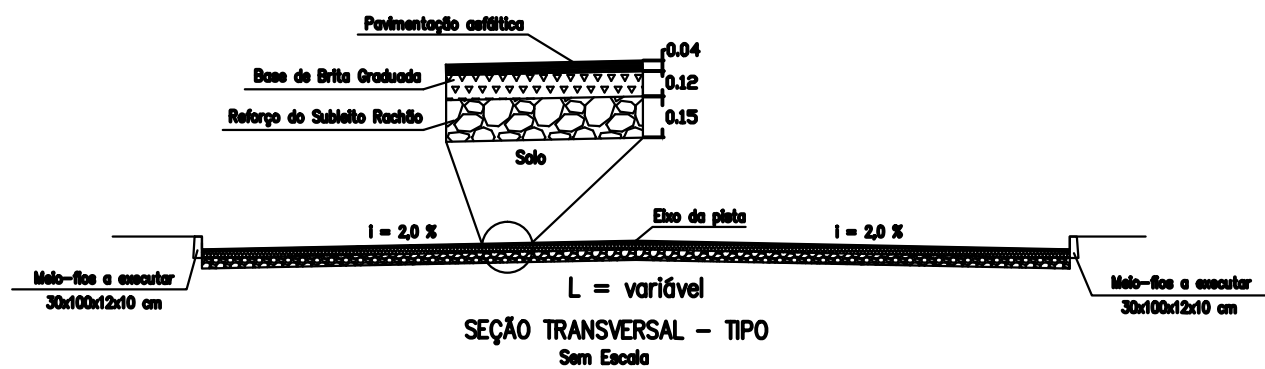
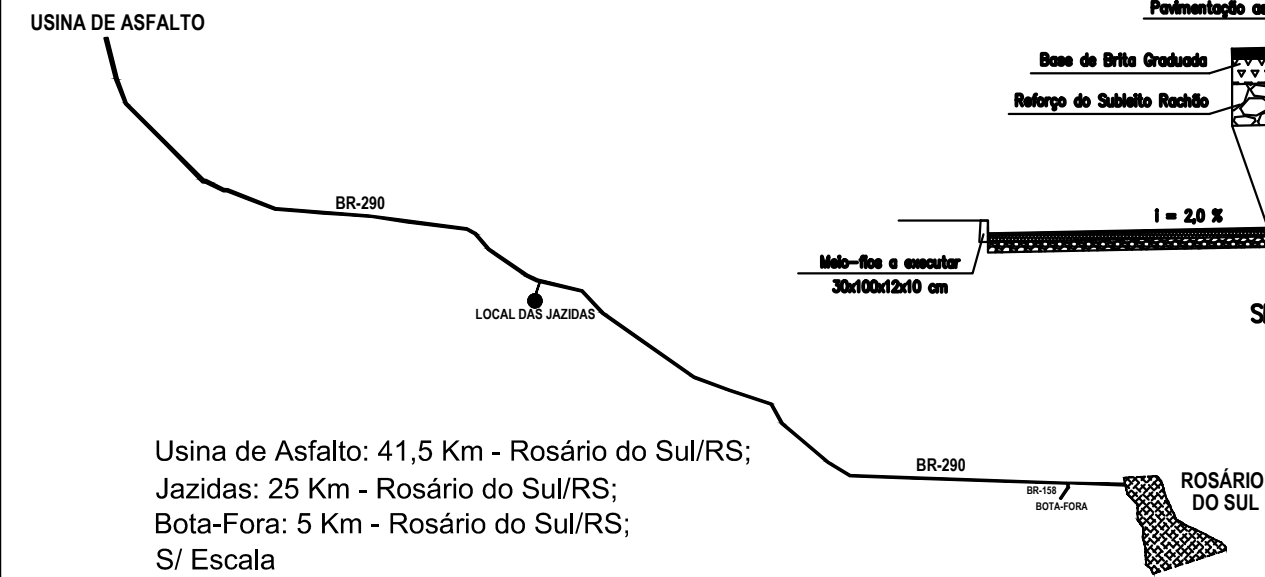
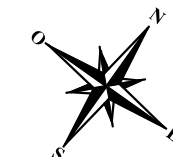
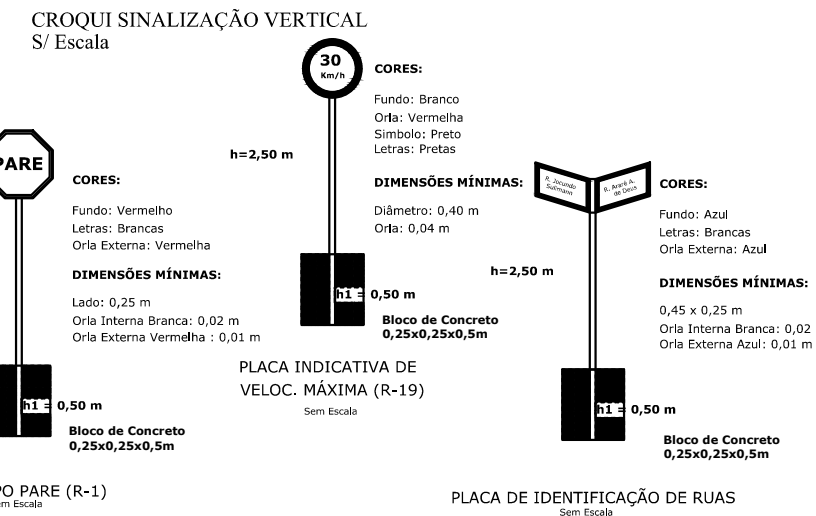
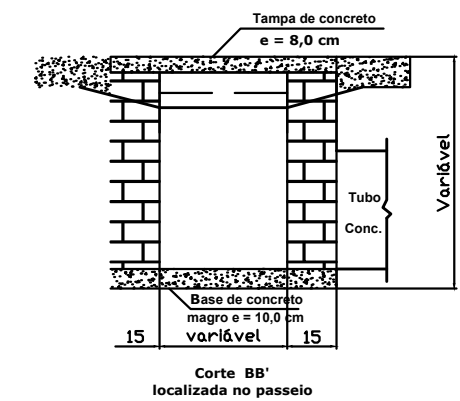
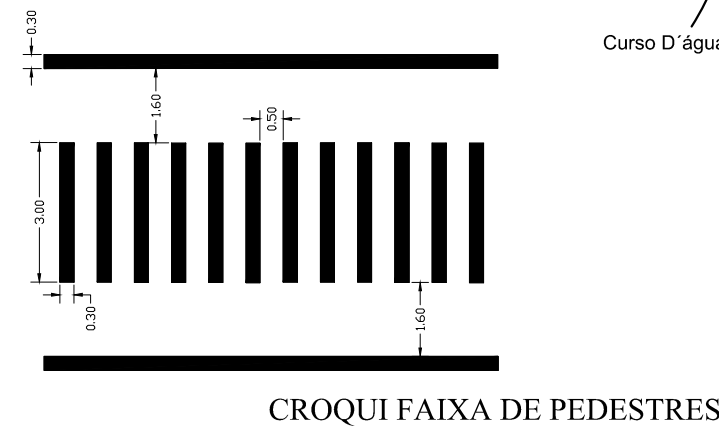


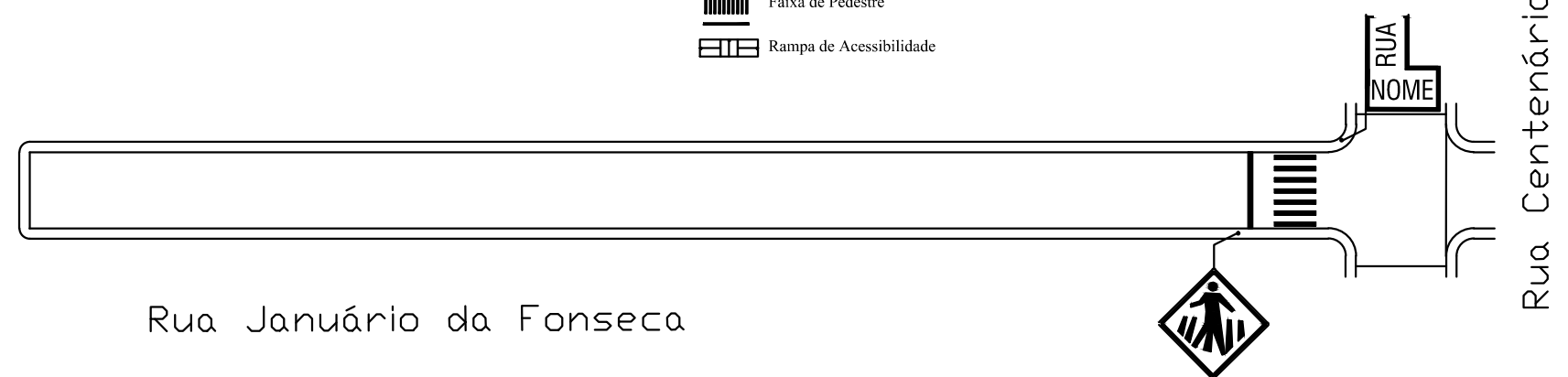
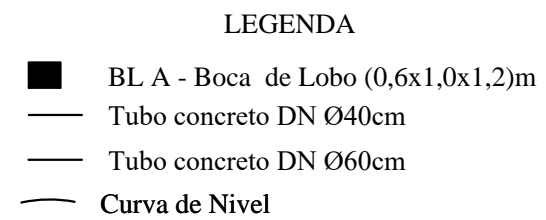
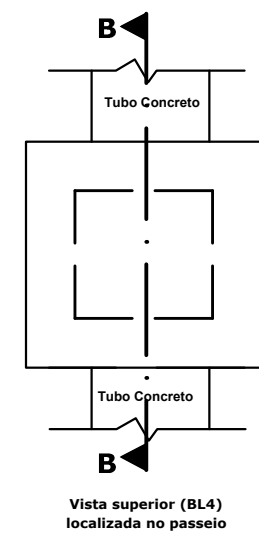
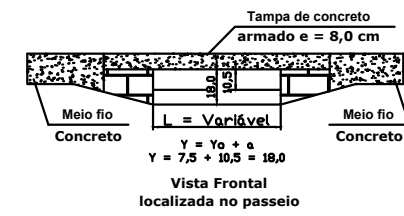
Planta Baixa
Pavimentação Asfáltica
Esc. 1:500



Planta Baixa
Drenagem
Esc. 1:500



CROQUI DA BOCA DE LOBO
S/ Escala



Planta de Sinalização
Esc. 1:500



Governo do Município
ROSÁRIO DO SUL
Por todos nós.



| | |
|----------------|---|
| PROJETO: | PROJETO DE PAVIMENTAÇÃO ASFÁLTICA |
| ENDEREÇO: | Rua Januário da Fonseca - Trecho entre Rua Centenário e final da rua |
| RESP. TÉCNICO: | ENG.º CIVIL BRUNO LOPES DE OLIVEIRA CREA: RS 239.927 - PORT. Nº 071/2025 |

| | |
|--------------|--------------|
| DATA: | JUNHO / 2026 |
| ÁREA: | 600,66 m² |
| COORDENADAS: | INDICADAS |
| ESCALA: | INDICADA |
| DESENHO: | |

| | |
|---------------|--|
| PROPRIETÁRIO: | PREFEITURA MUNICIPAL DE ROSÁRIO DO SUL MARCOS PAULO SILVA DA LUZ - PREFEITO MUNICIPAL |
|---------------|--|

| | |
|----------|-----|
| PRANCHA: | 1/1 |
|----------|-----|