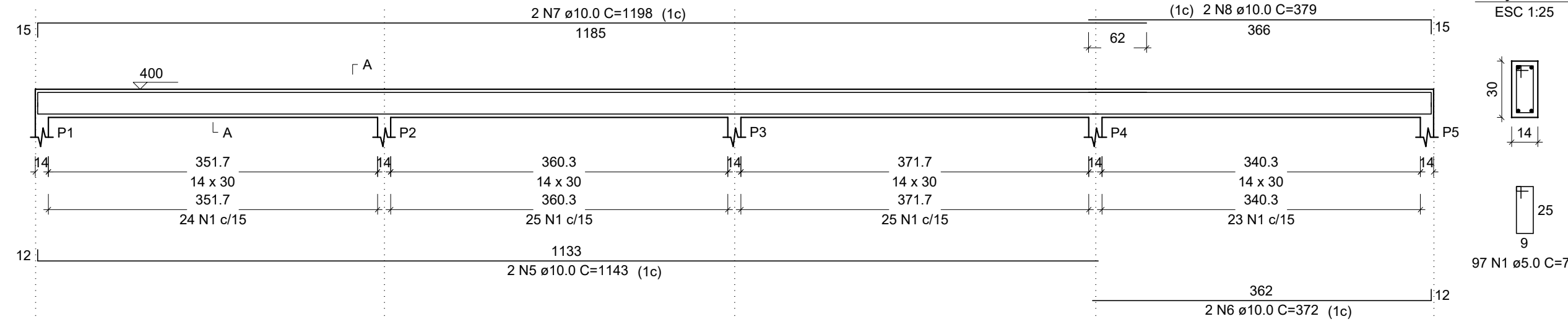
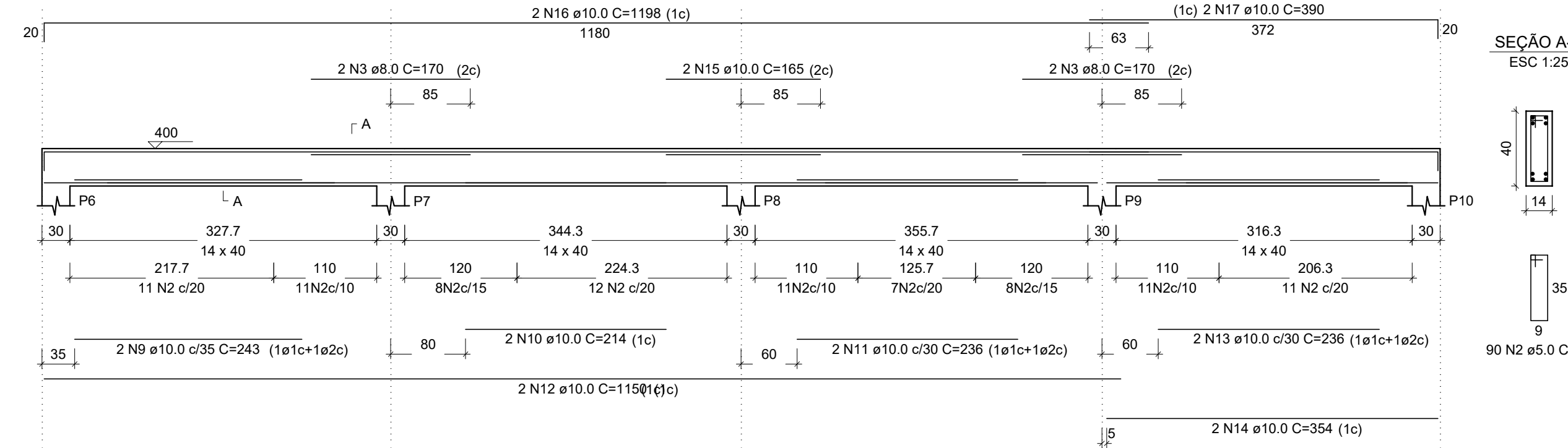


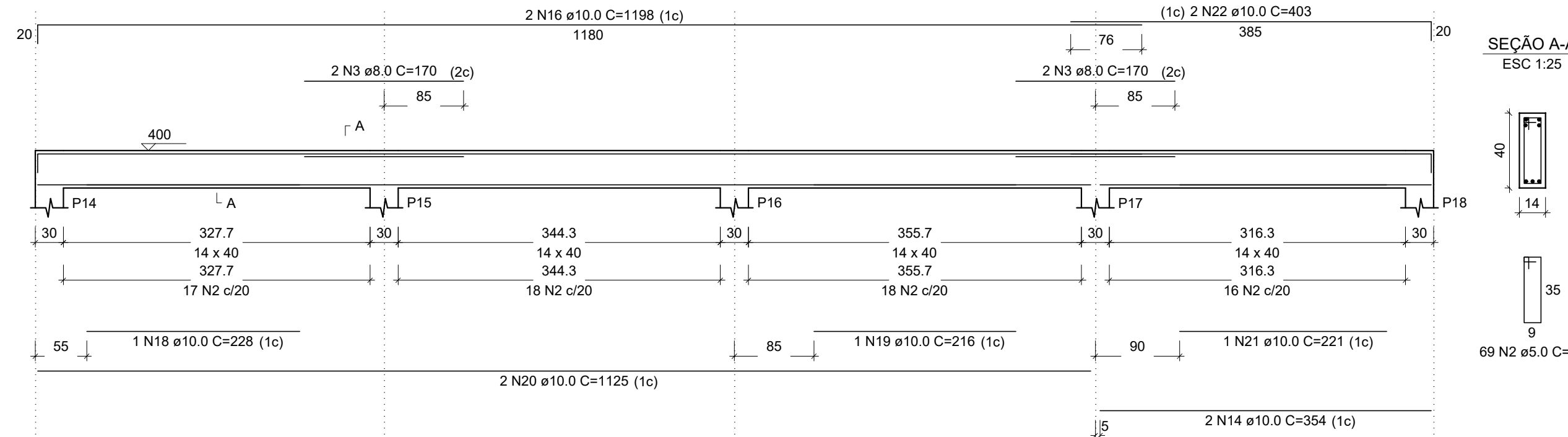
V1
ESC 1:50



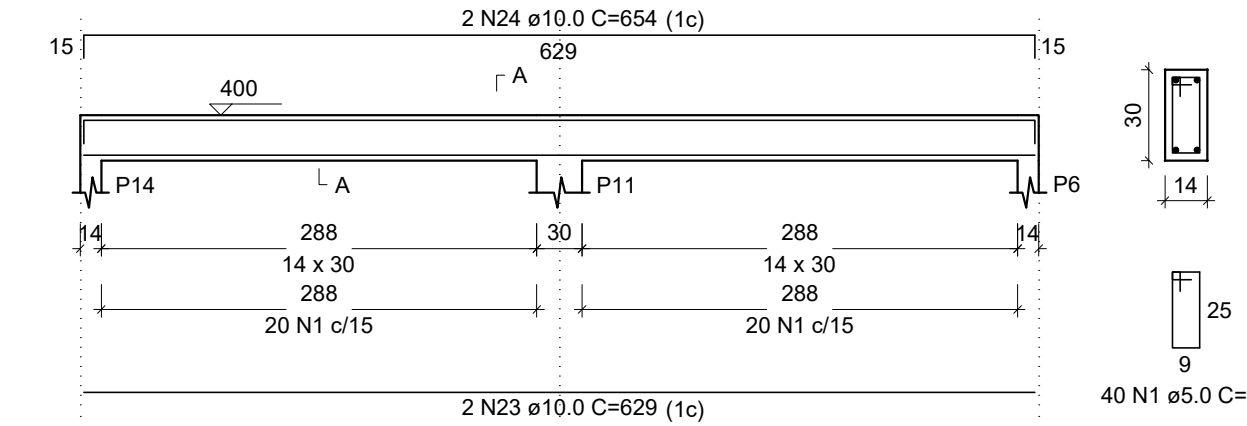
V2
ESC 1:50



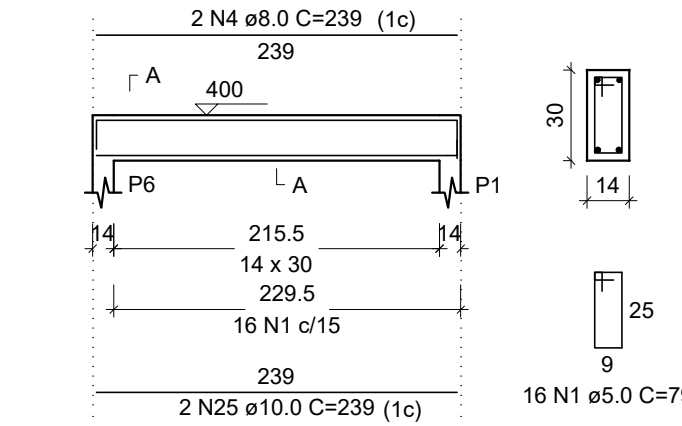
V3
ESC 1:50



V4
ESC 1:50



V5
ESC 1:50

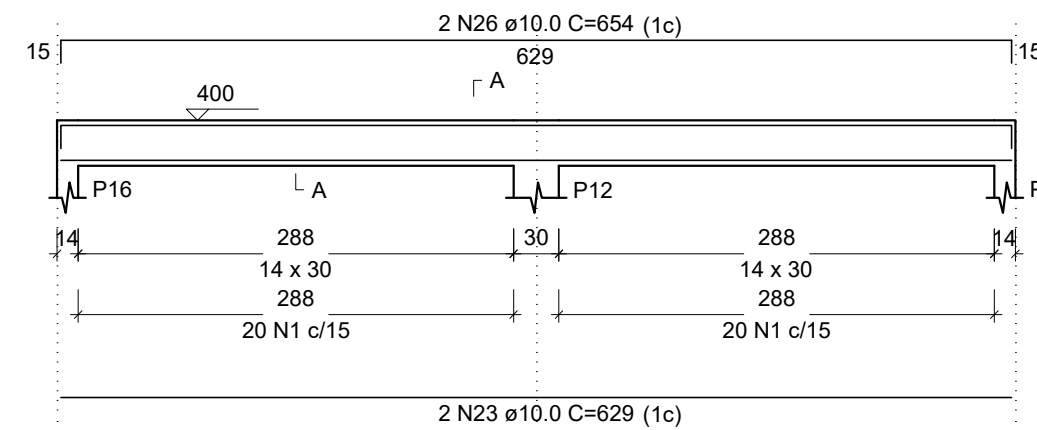


RESUMO DO AÇO

AÇO	DIAM (mm)	C.TOTAL (m)	PESO + 10% (kg)
CA50	8,0	27,9	12,1
CA60	10,0	305,1	206,9
	5,0	366	62
PESO TOTAL (kg)			
CA50		219,1	
CA60		62	

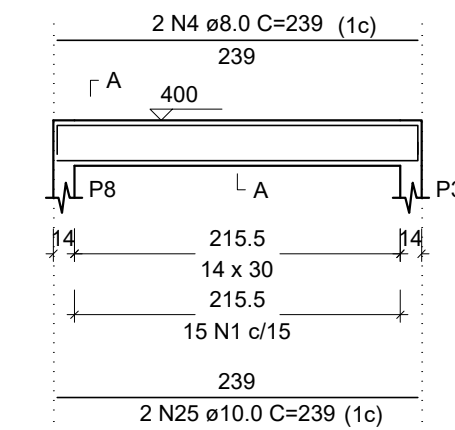
Volume de concreto (C-25) = 3,41 m³
Área de forma = 58,62 m²

V6
ESC 1:50



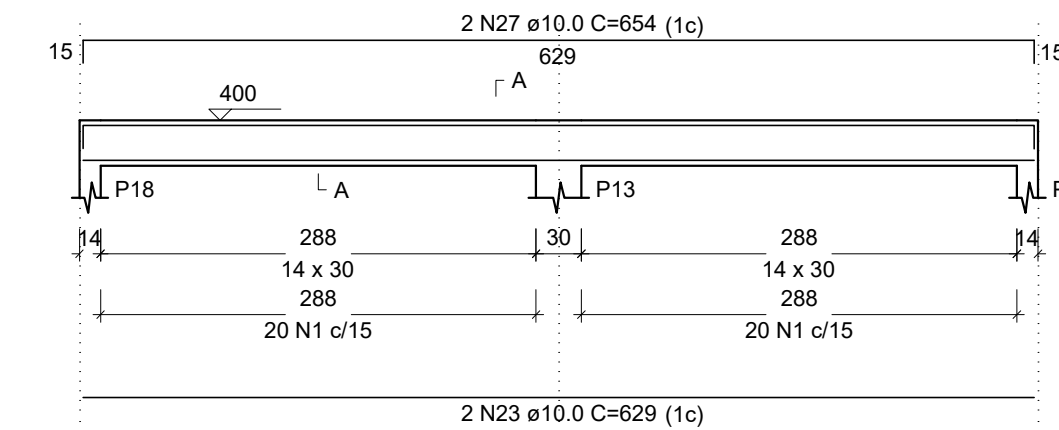
SEÇÃO A-A
ESC 1:25

V7
ESC 1:50



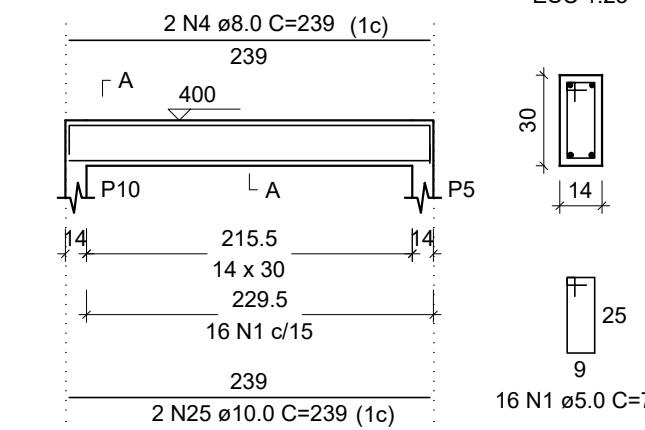
SEÇÃO A-A
ESC 1:25

V8
ESC 1:50



SEÇÃO A-A
ESC 1:25

V9
ESC 1:50



SEÇÃO A-A
ESC 1:25

PREFEITURA MUNICIPAL DO RIO GRANDE
GABINETE DE PROGRAMAS E PROJETOS ESPECIAIS

EMEF Ana Neri
PROJETO ESTRUTURAL

GPPE
12.2025

ARMAÇÃO VIGAS DA COBERTURA

PAULO CESAR FERRARI PIRES
Eng Civil - CREA-RS 139940