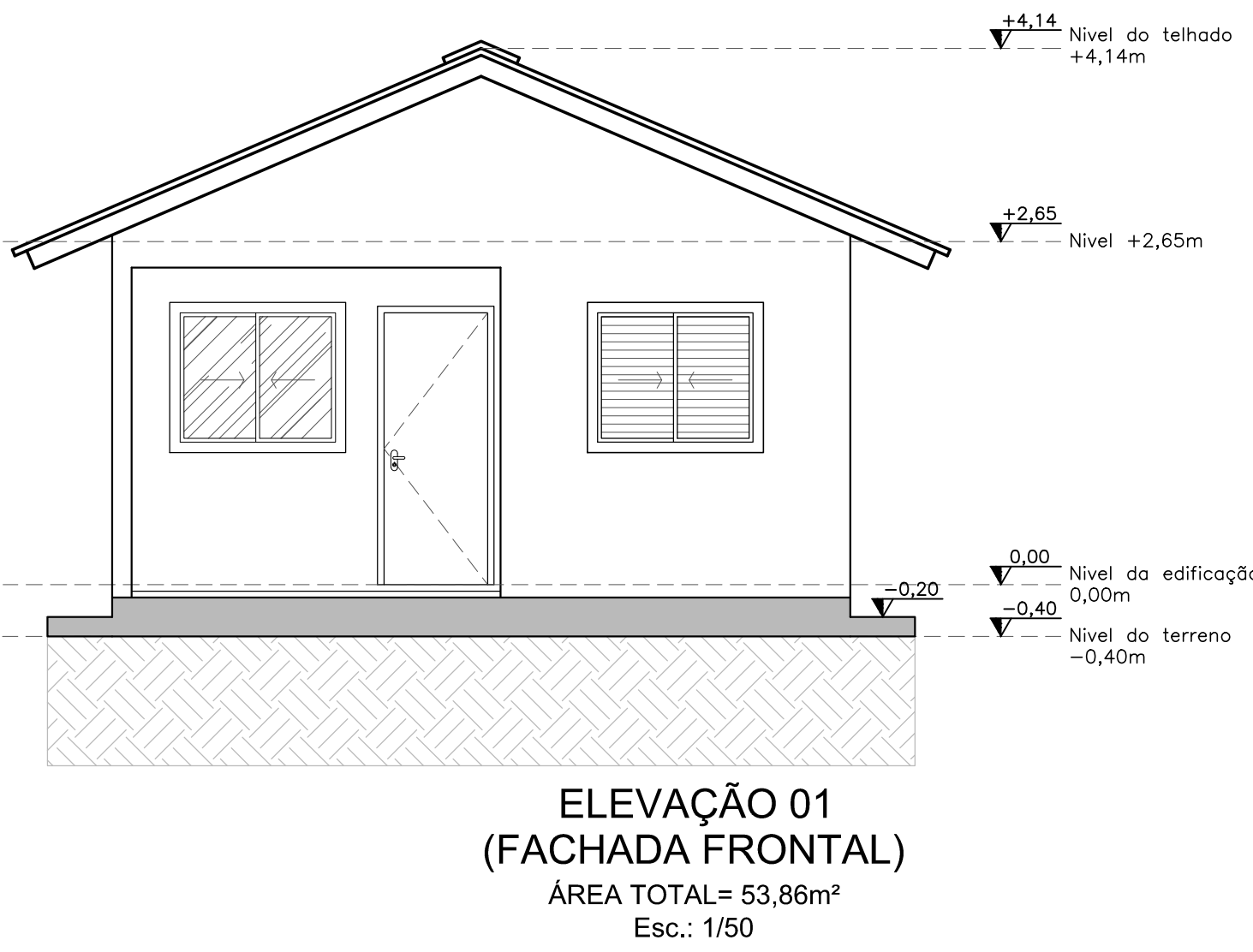
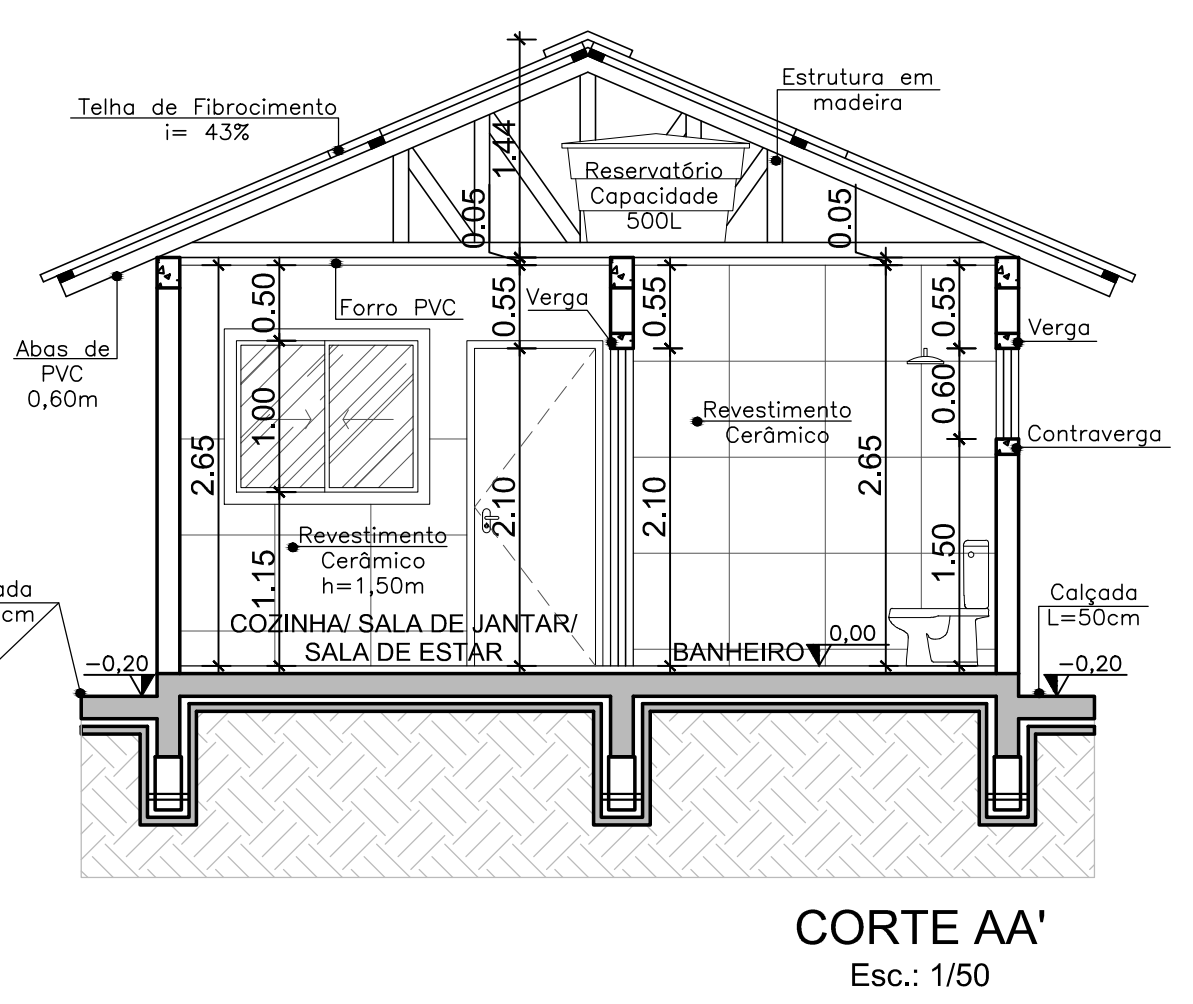
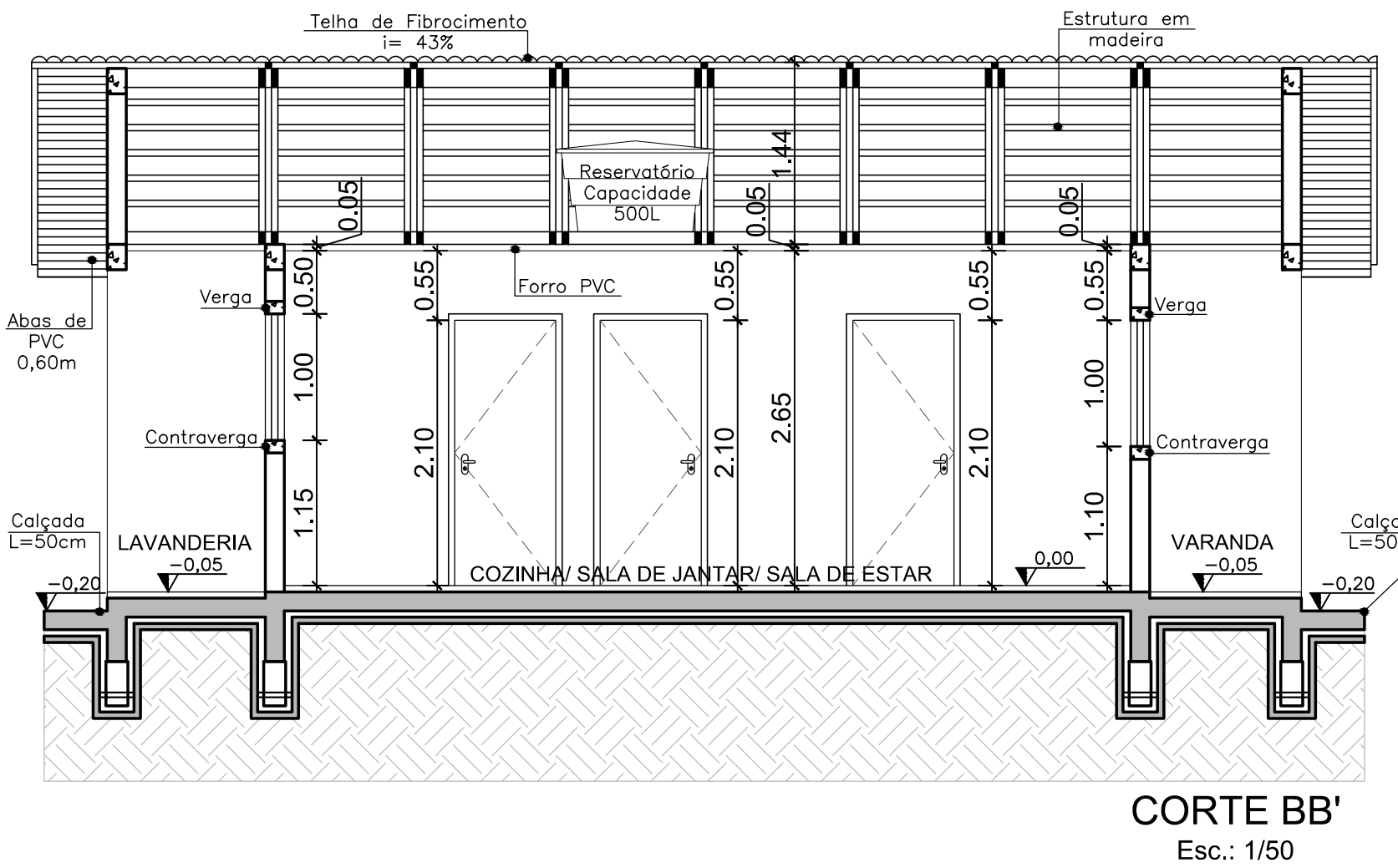
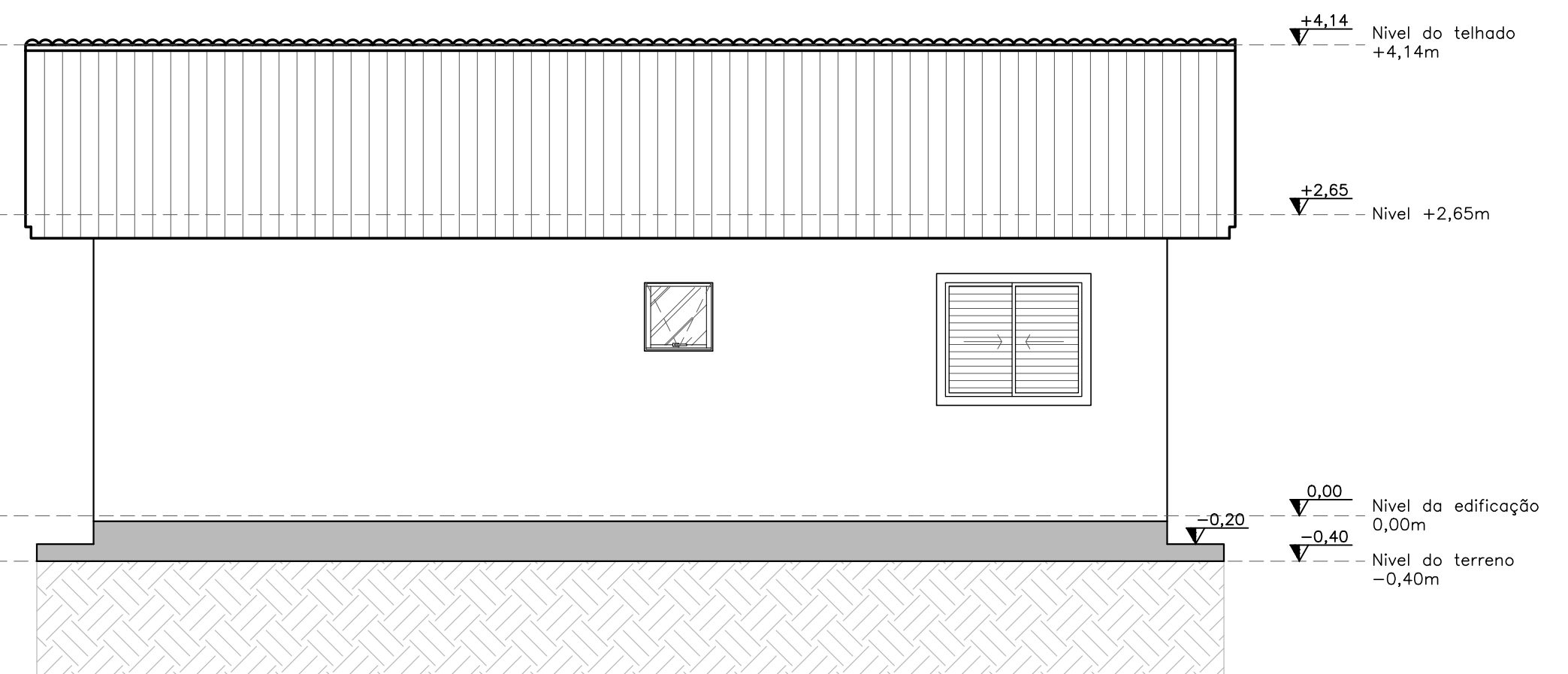
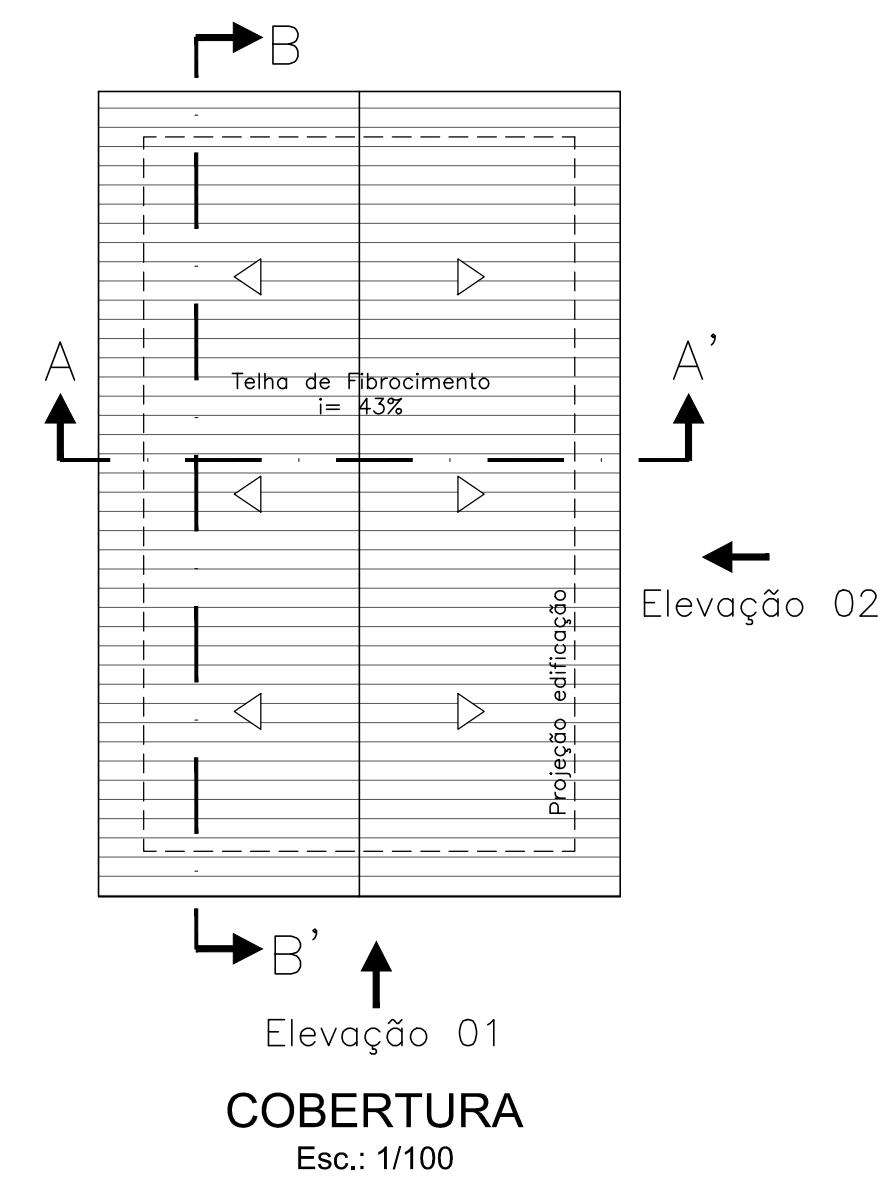


Elevação 02



PREFEITURA MUNICIPAL DE PORTO VERA CRUZ

MINHA CASA, MINHA VIDA
FNHIS SUB 50

ASSUNTO: Projeto Arquitetônico: Planta Baixa, Layout, Cortes e Fachada

Resp. Prefeitura: Jaime Domingos Taffarel
 Prefeito Municipal

RESP. TÉCNICO: Eng. Civil: Talvane Engrhoff
 CREA: 107476-D

PRANCHA

02

ESCALA : Indicada	ÁREA: 53,86m²	DATA: Setembro/2025	DESENHO: Andriele dos Santos
----------------------	------------------	------------------------	---------------------------------