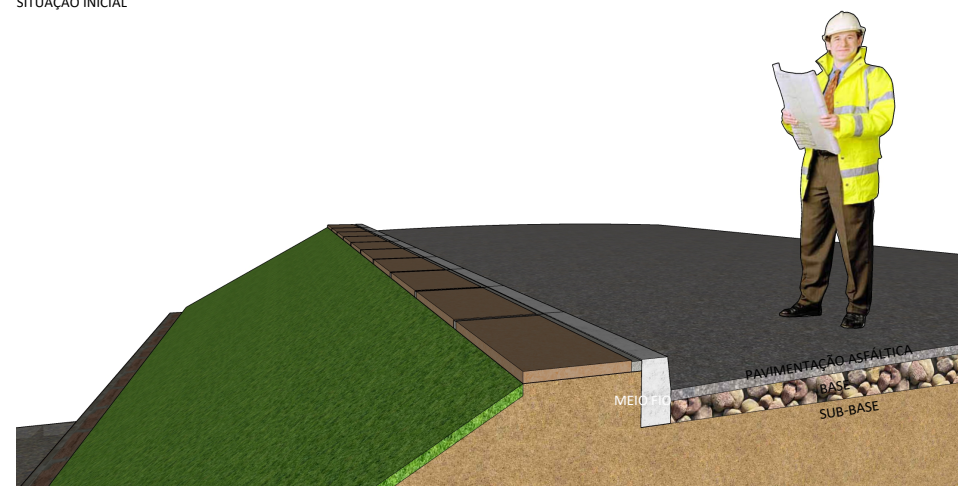
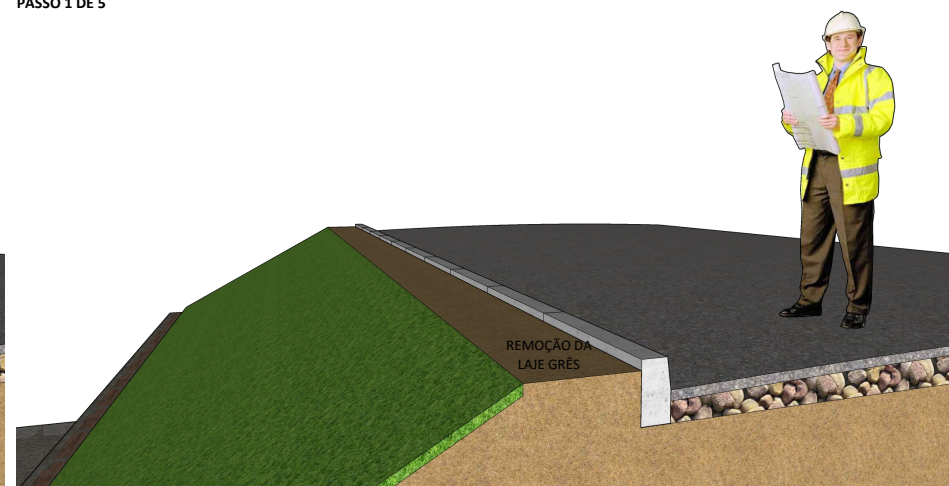


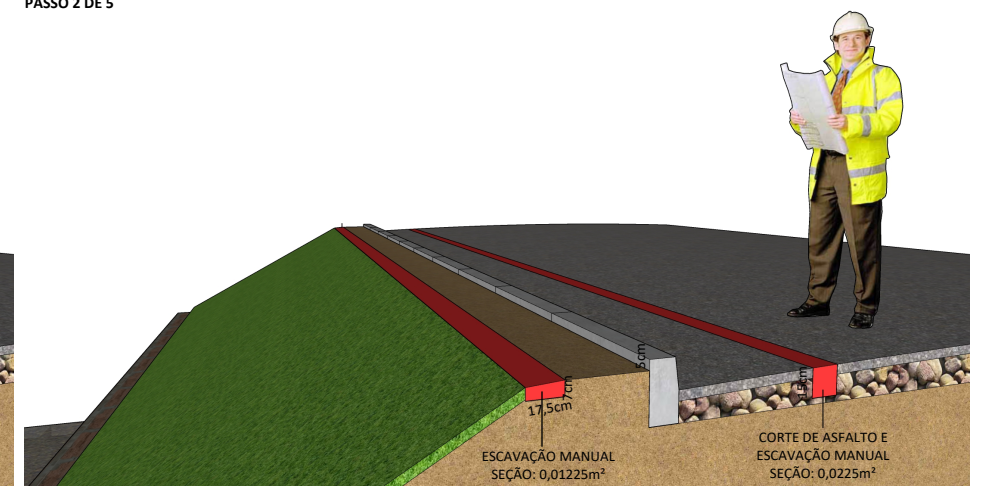
SEÇÃO TIPO DA INTERVENÇÃO:
SITUAÇÃO INICIAL



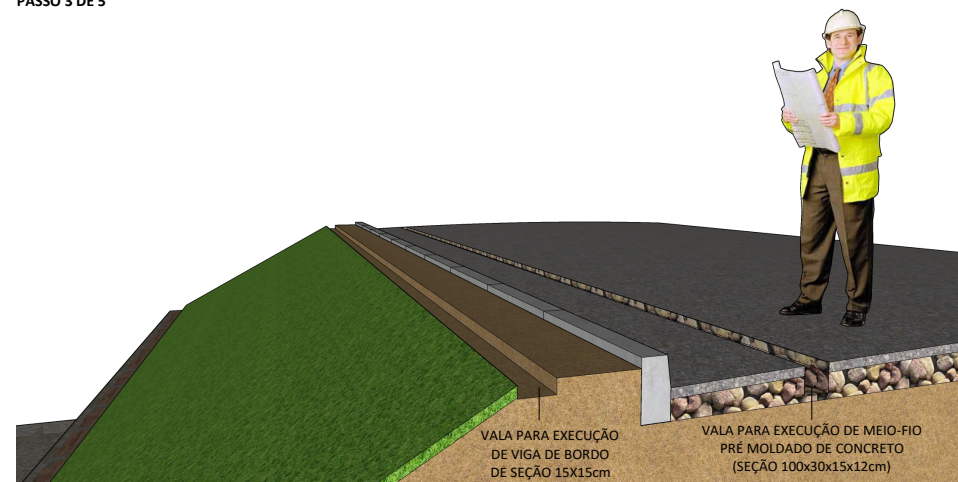
PASSO 1 DE 5



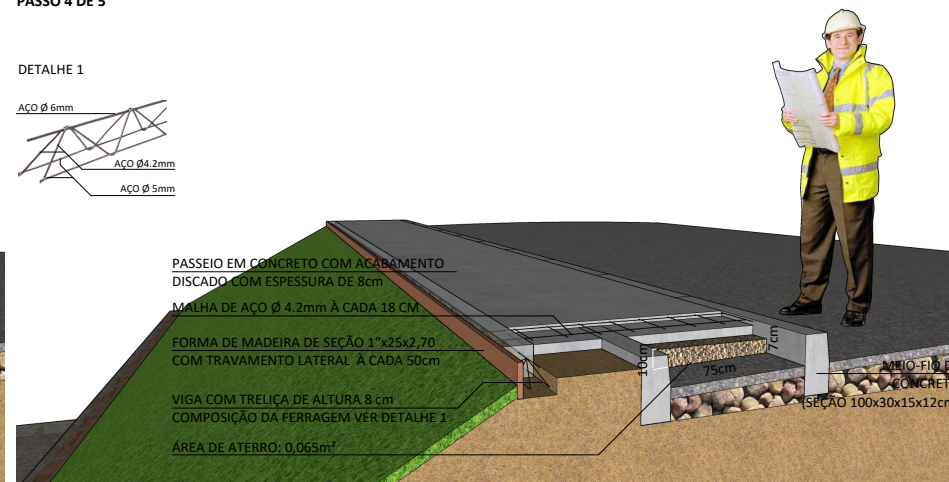
PASSO 2 DE 5



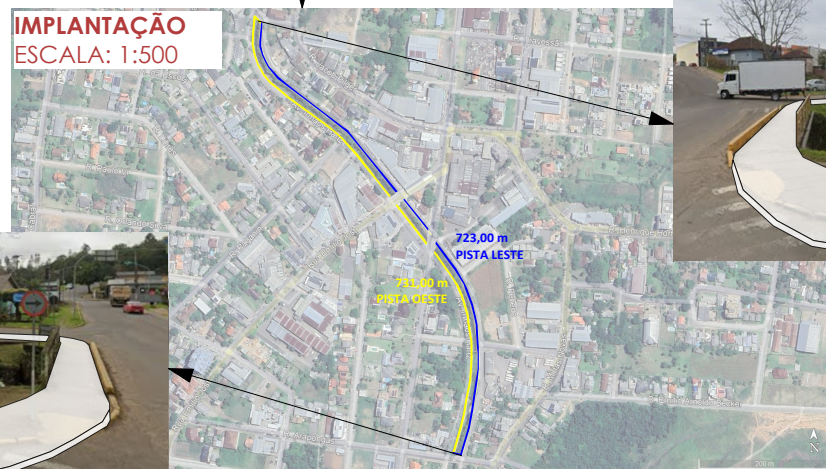
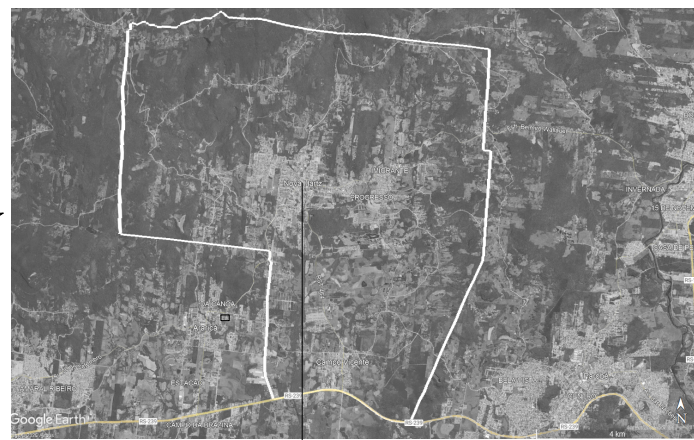
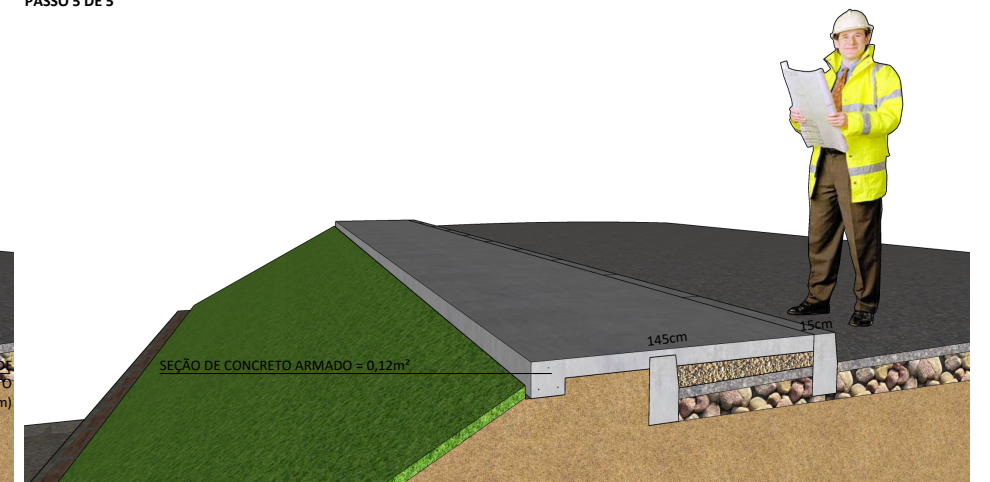
PASSO 3 DE 5



PASSO 4 DE 5



PASSO 5 DE 5



MUNICIPIO DE NOVA HARTZ		
Estudo de Implantação - Alargamento de Passeio Avenida Irmãos Hartz, Bairro Centro, Nova Hartz/RS		
ASSUNTO:	Projeto Padrão	
LOCAL:	NOVA HARTZ - RIO GRANDE DO SUL - BRASIL	
DESENHO: Renan	ESCALA: Indicada	UN
DATA: Outubro / 2025	PRANCHA:	