




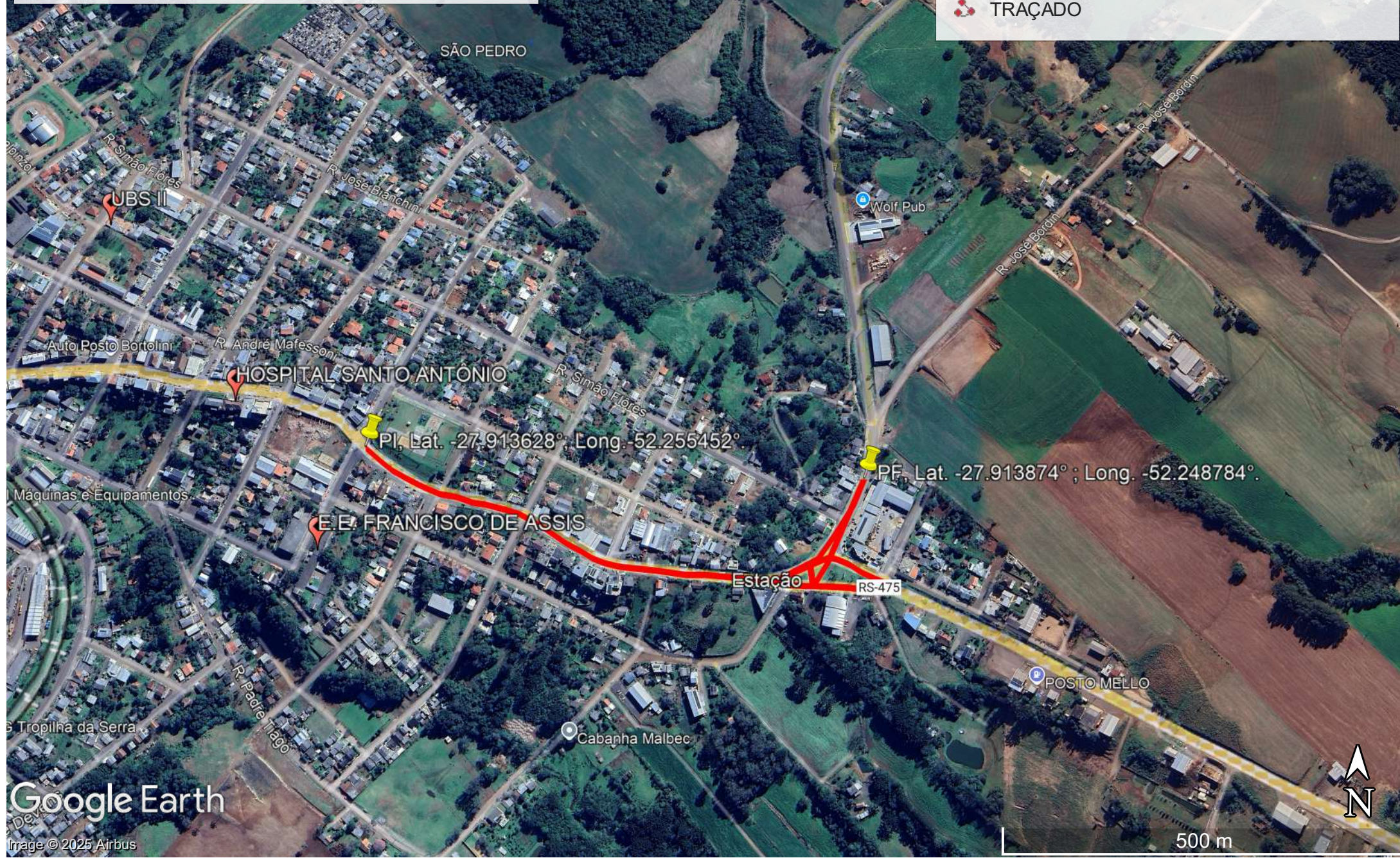
LOCAL E SITUAÇÃO DA OBRA.

METRAGEM QUADRADA: 12.341,41 M²

METRAGEM LINAR DE APROXIMADAMENTE: 1234,141 M

Legenda

-  COORDENADAS DE INICIO E FIM DA OBRA.
-  LOCAIS DE REFERÊNCIA
-  TRAÇADO



500 m